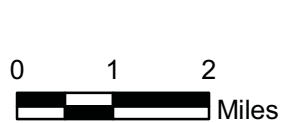


NOTE: Mapping northwest of Access Line is based on aerial photographs and ground views rather than direct site access.



Environmental Impact Report
prepared for State Water Resources Control Board
by GEI Consultants, Inc.

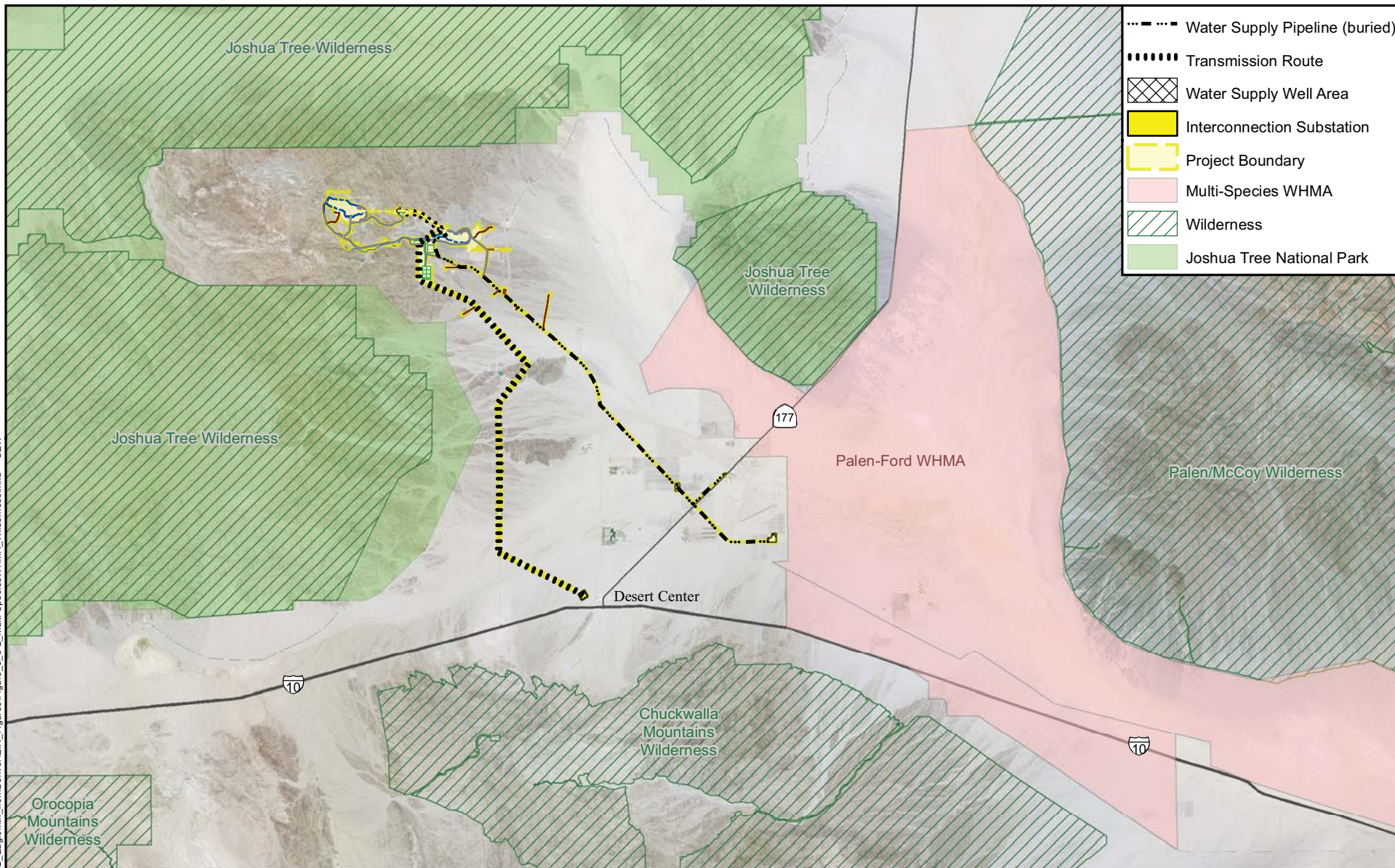
Eastern Riverside County, California

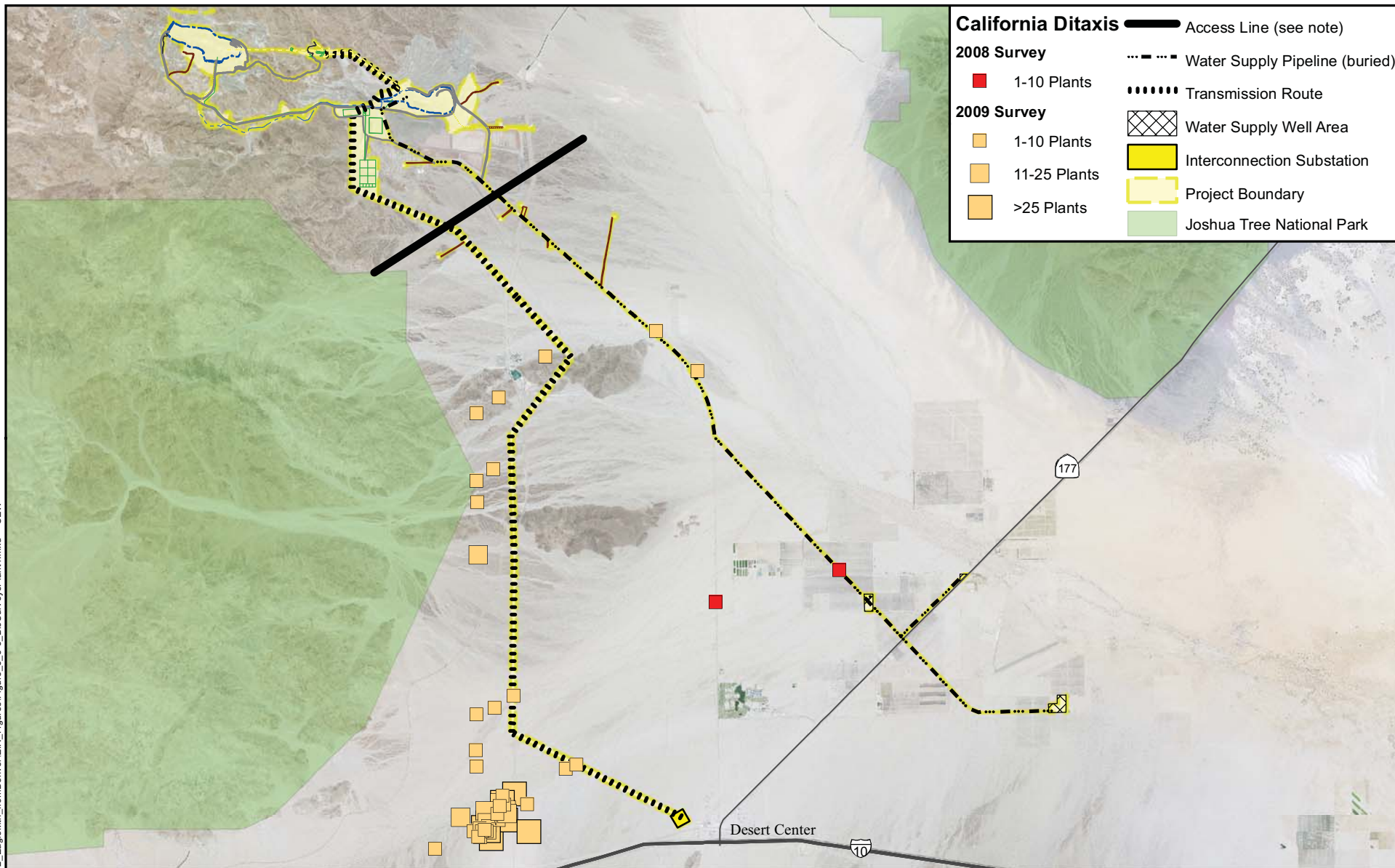


VEGETATION IN
PROJECT AREA

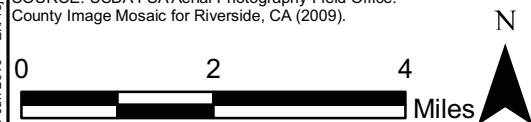
June 2010

Figure 3.5-1





NOTE: Mapping northwest of Access Line is based on aerial photographs and ground views rather than direct site access.
SOURCE: USDA FSA Aerial Photography Field Office: County Image Mosaic for Riverside, CA (2009).



Environmental Impact Report
prepared for State Water Resources Control Board
by GEI Consultants, Inc.

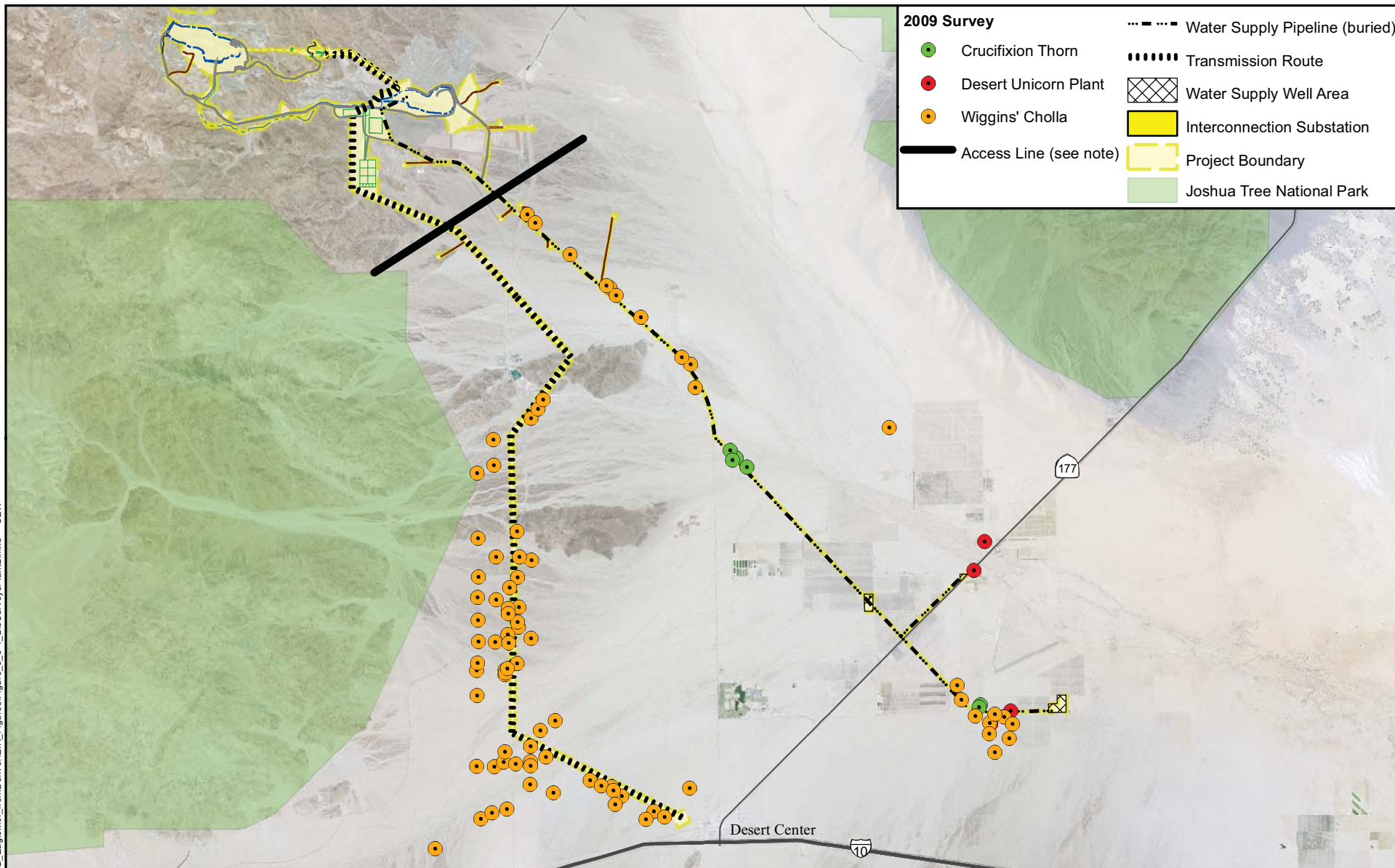
Eastern Riverside County, California



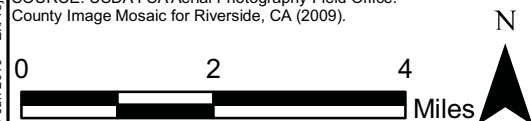
RESULTS OF SPECIAL
BIOLOGICAL RESOURCES
SURVEYS IN 2008 AND 2009:
PLANTS (PAGE 1 OF 3)

June 2010

Figure 3.5-3



NOTE: Mapping northwest of Access Line is based on aerial photographs and ground views rather than direct site access.
SOURCE: USDA FSA Aerial Photography Field Office: County Image Mosaic for Riverside, CA (2009).



Environmental Impact Report
prepared for State Water Resources Control Board
by GEI Consultants, Inc.

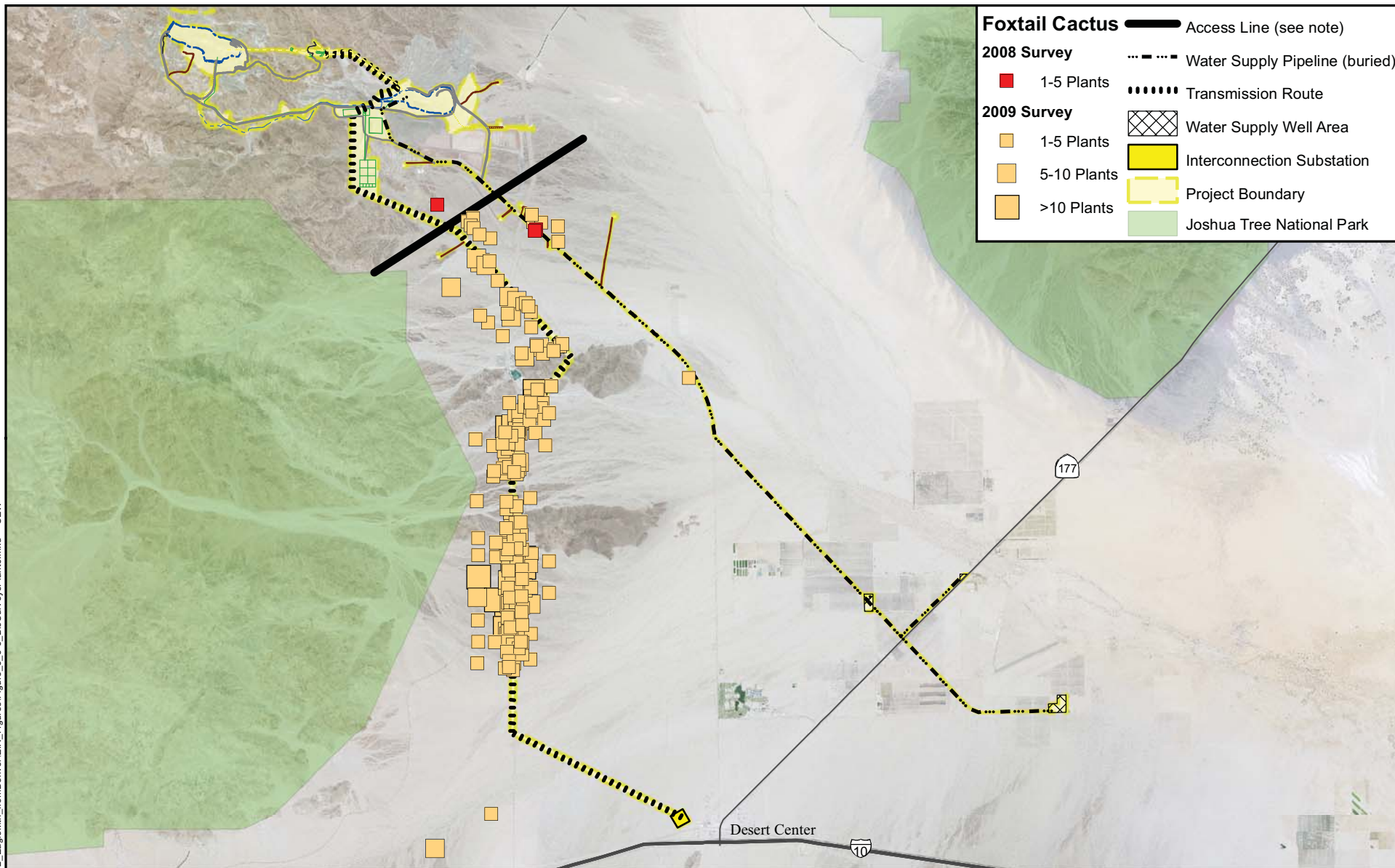
Eastern Riverside County, California



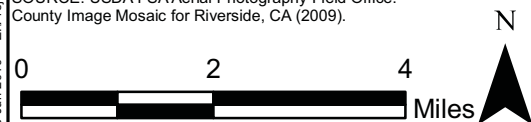
RESULTS OF SPECIAL
BIOLOGICAL RESOURCES
SURVEYS IN 2008 AND 2009:
PLANTS (PAGE 2 OF 3)

June 2010

Figure 3.5-4



NOTE: Mapping northwest of Access Line is based on aerial photographs and ground views rather than direct site access.
SOURCE: USDA FSA Aerial Photography Field Office: County Image Mosaic for Riverside, CA (2009).



Environmental Impact Report
prepared for State Water Resources Control Board
by GEI Consultants, Inc.

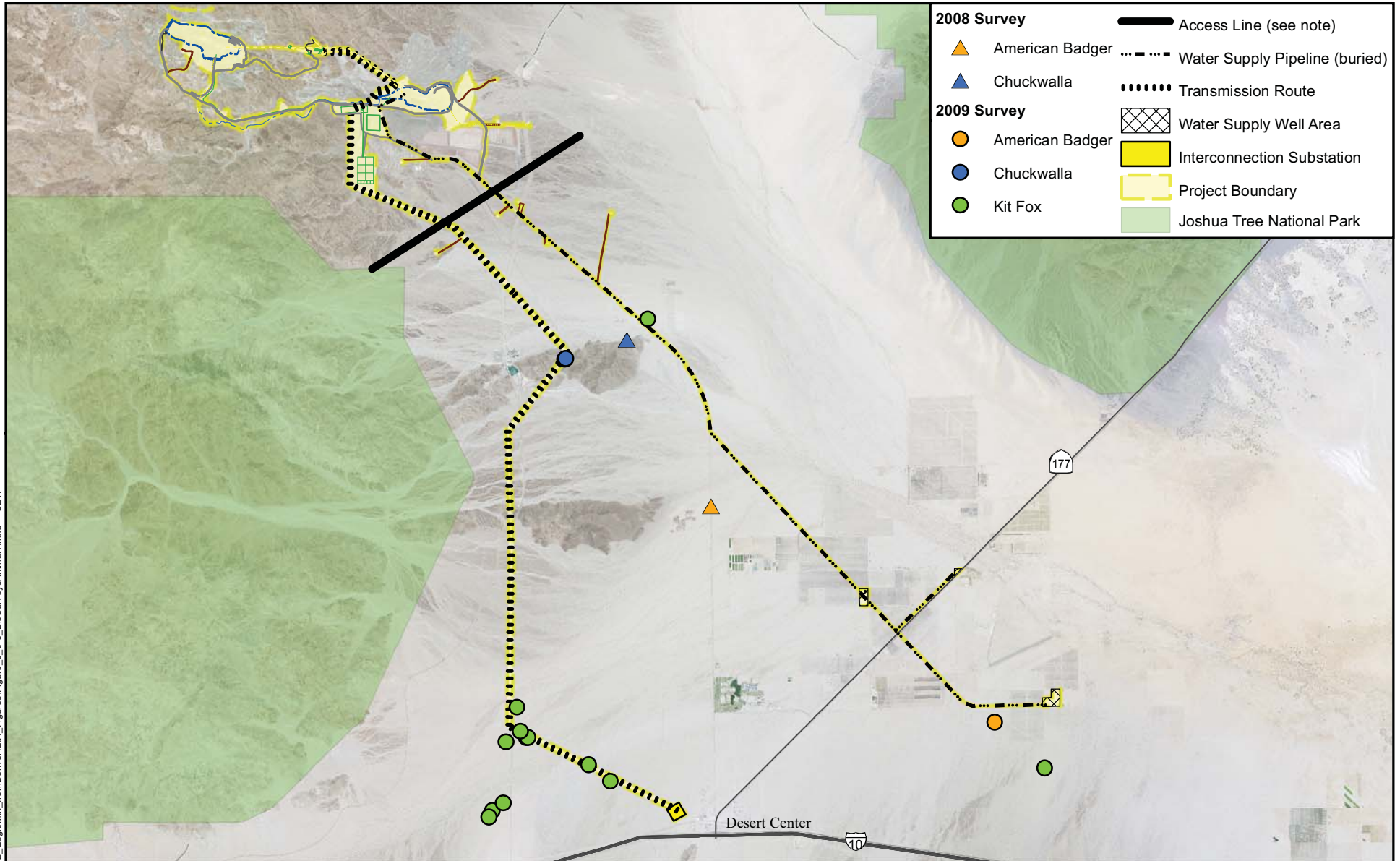
Eastern Riverside County, California



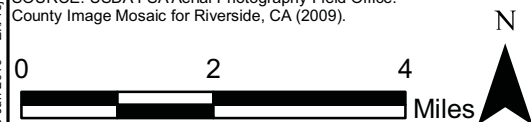
RESULTS OF SPECIAL
BIOLOGICAL RESOURCES
SURVEYS IN 2008 AND 2009:
PLANTS (PAGE 3 OF 3)

June 2010

Figure 3.5-5



NOTE: Mapping northwest of Access Line is based on aerial photographs and ground views rather than direct site access.
SOURCE: USDA FSA Aerial Photography Field Office: County Image Mosaic for Riverside, CA (2009).



Environmental Impact Report
prepared for State Water Resources Control Board
by GEI Consultants, Inc.

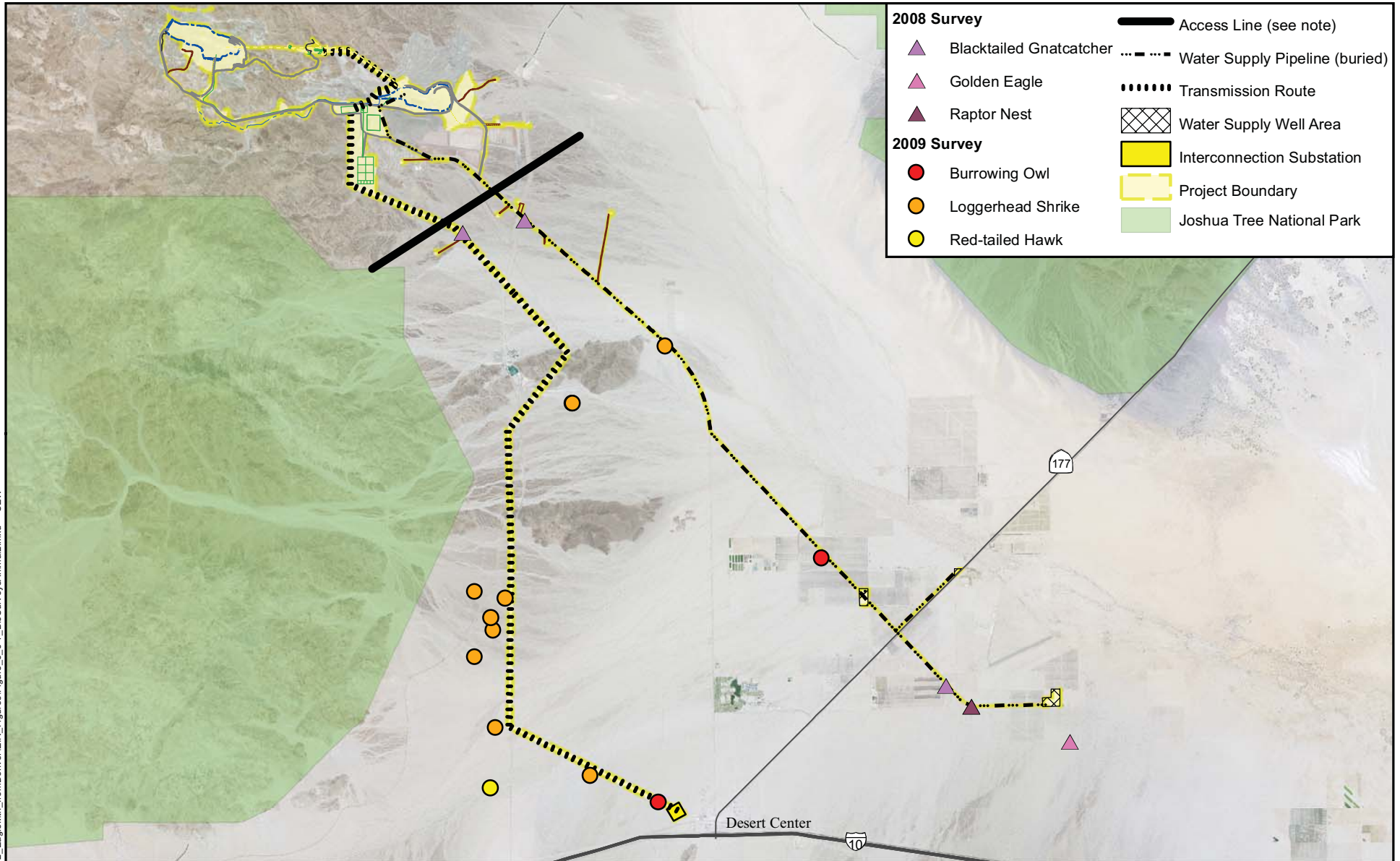
Eastern Riverside County, California



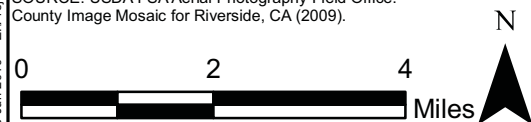
RESULTS OF SPECIAL
BIOLOGICAL RESOURCES
SURVEYS IN 2008 AND 2009:
PLANTS (PAGE 1 OF 2)

June 2010

Figure 3.5-6



NOTE: Mapping northwest of Access Line is based on aerial photographs and ground views rather than direct site access.
SOURCE: USDA FSA Aerial Photography Field Office: County Image Mosaic for Riverside, CA (2009).



Environmental Impact Report
prepared for State Water Resources Control Board
by GEI Consultants, Inc.

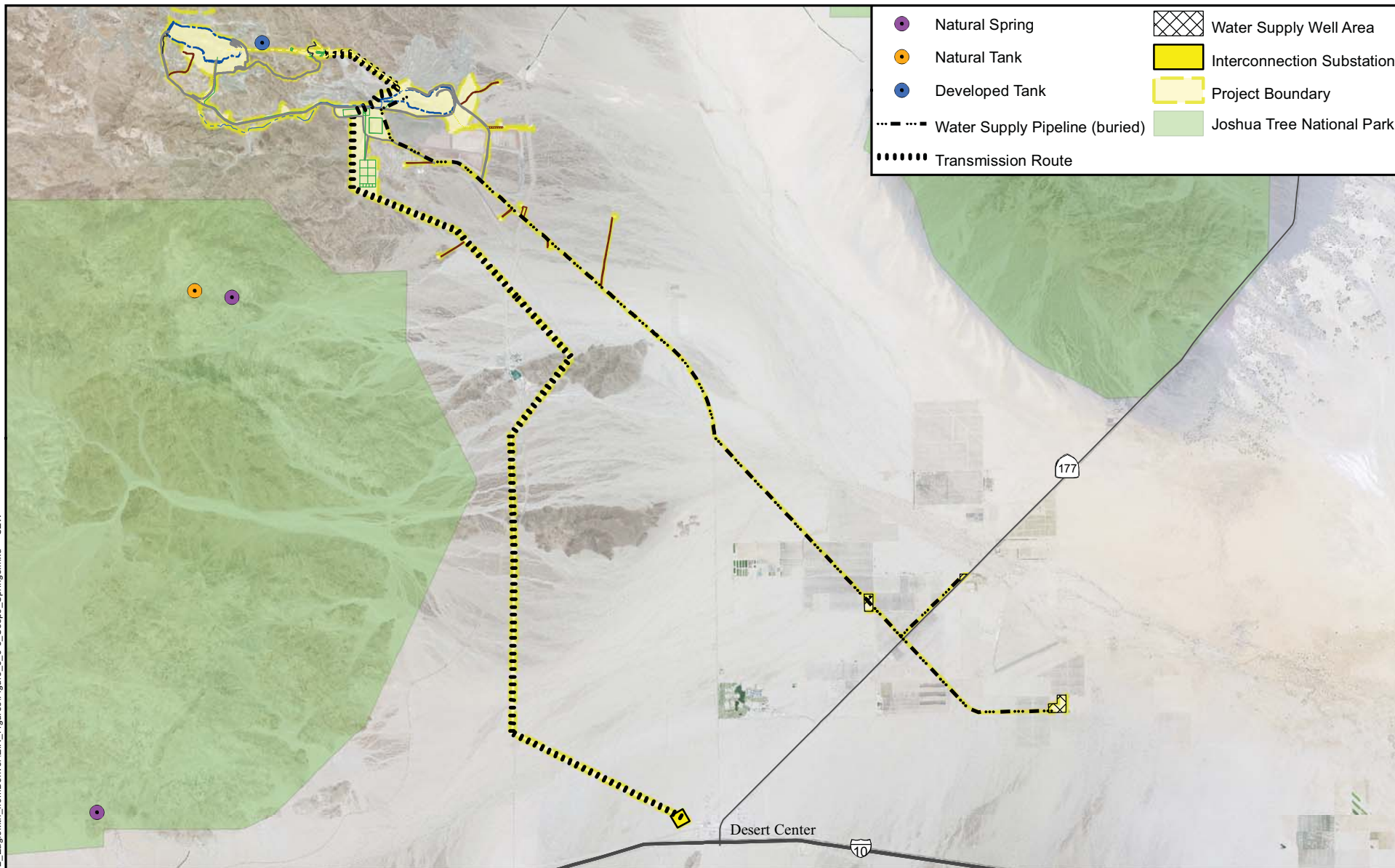
Eastern Riverside County, California



RESULTS OF SPECIAL
BIOLOGICAL RESOURCES
SURVEYS IN 2008 AND 2009:
PLANTS (PAGE 2 OF 2)

June 2010

Figure 3.5-7



SOURCE: USDA FSA Aerial Photography Field Office:
County Image Mosaic for Riverside, CA (2009).

Environmental Impact Report
prepared for State Water Resources Control Board
by GEI Consultants, Inc.

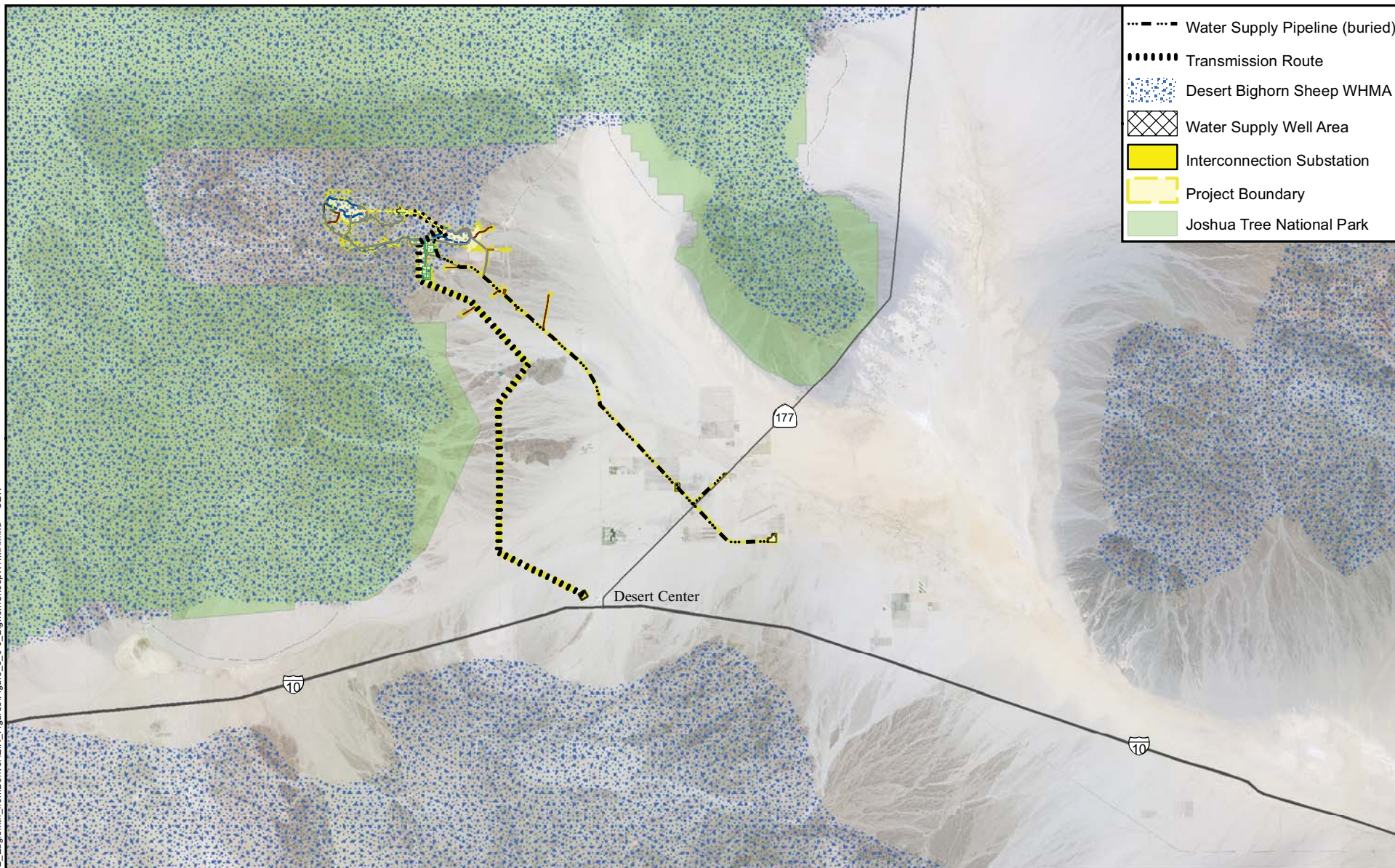
Eastern Riverside County, California



SEEPS AND SPRINGS
NEAR THE PROJECT AREA

June 2010

Figure 3.5-8



- Water Supply Pipeline (buried)
- Transmission Route
- Desert Bighorn Sheep WHMA
- Water Supply Well Area
- Interconnection Substation
- Project Boundary
- Joshua Tree National Park

Desert Center

177

10

10



Environmental Impact Report
prepared for State Water Resources Control Board
by GEI Consultants, Inc.

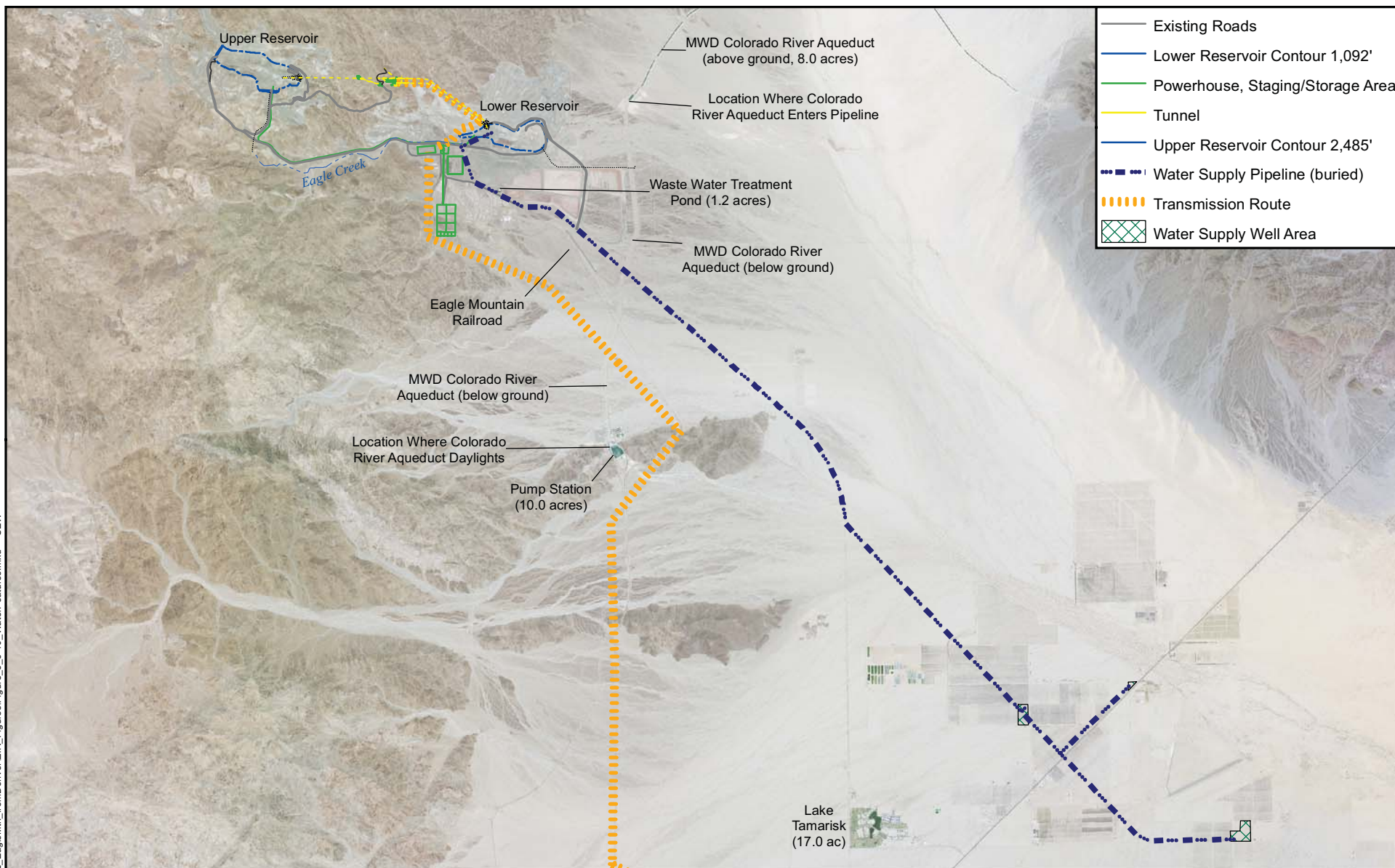
Eastern Riverside County, California



DESERT BIGHORN
SHEEP WHMA
NEAR PROJECT AREA

June 2010

Figure 3.5-9



- Existing Roads
- Lower Reservoir Contour 1,092'
- Powerhouse, Staging/Storage Area
- Tunnel
- Upper Reservoir Contour 2,485'
- Water Supply Pipeline (buried)
- Transmission Route
- Water Supply Well Area

0 1 2
Miles



Environmental Impact Report
prepared for State Water Resources Control Board
by GEI Consultants, Inc.

Eastern Riverside County, California



EXISTING SURFACE WATER
FEATURES IN THE EAGLE MOUNTAIN
PUMPED STORAGE PROJECT AREA

June 2010

Figure 3.5-10



Figure 3.5-11. Aerial view of Eagle Mountain Mine Site, circle shows the location of the existing water treatment pond.

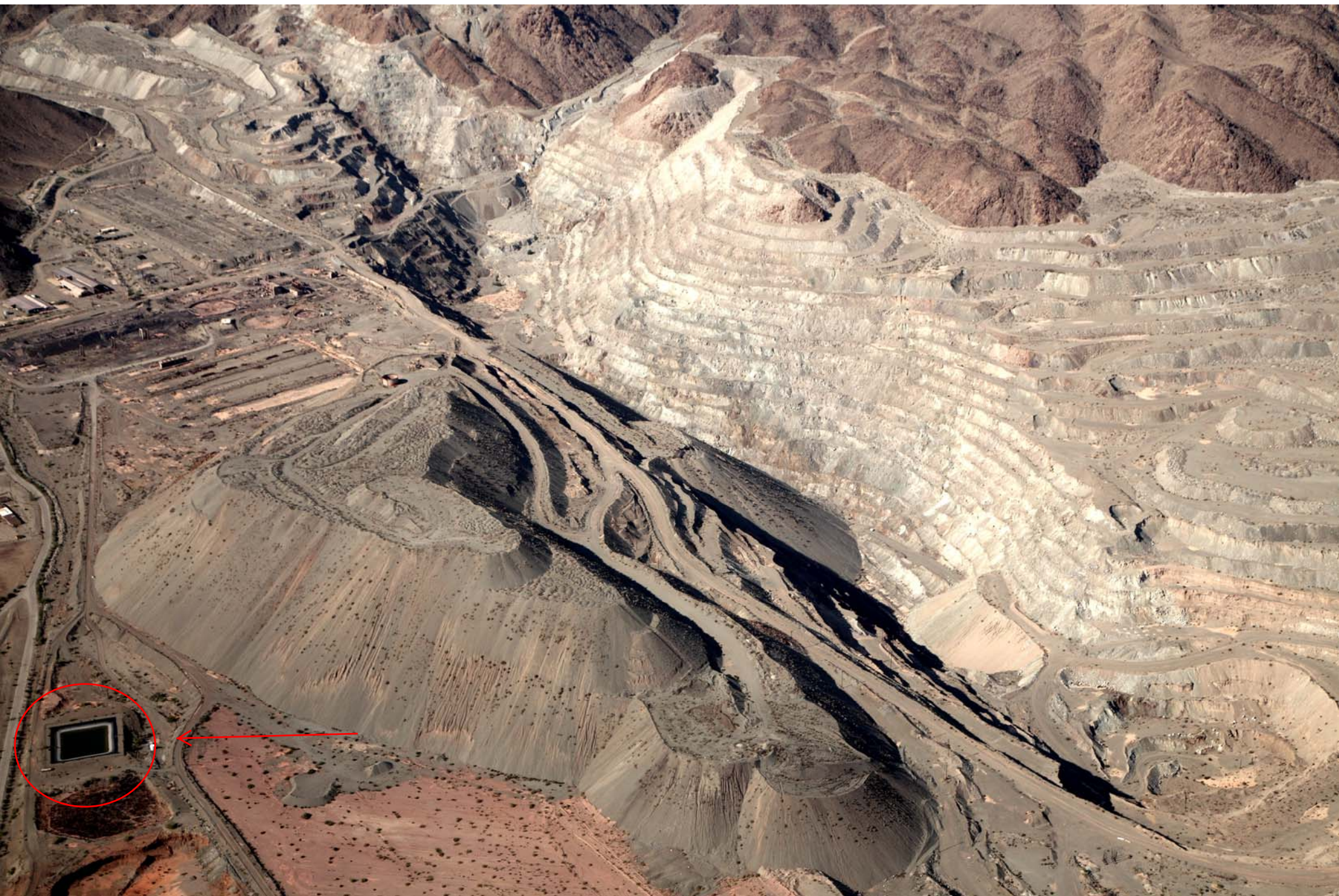


Figure 3.5-12. Aerial view of lower pit, with existing water treatment pond at lower left.



12/22/2007

Figure 3.5-13. Colorado River Aqueduct, Eagle Mountain Pumping Station.



12/22/2007

Figure 3.5-14. Colorado River Aqueduct at Eagle Mountain Pumping Station, view NW towards the Eagle Mountain Mine



Figure 3.5-15. Colorado River Aqueduct, where it goes subsurface, north of the Eagle Mountain Mine.



10.24.2007

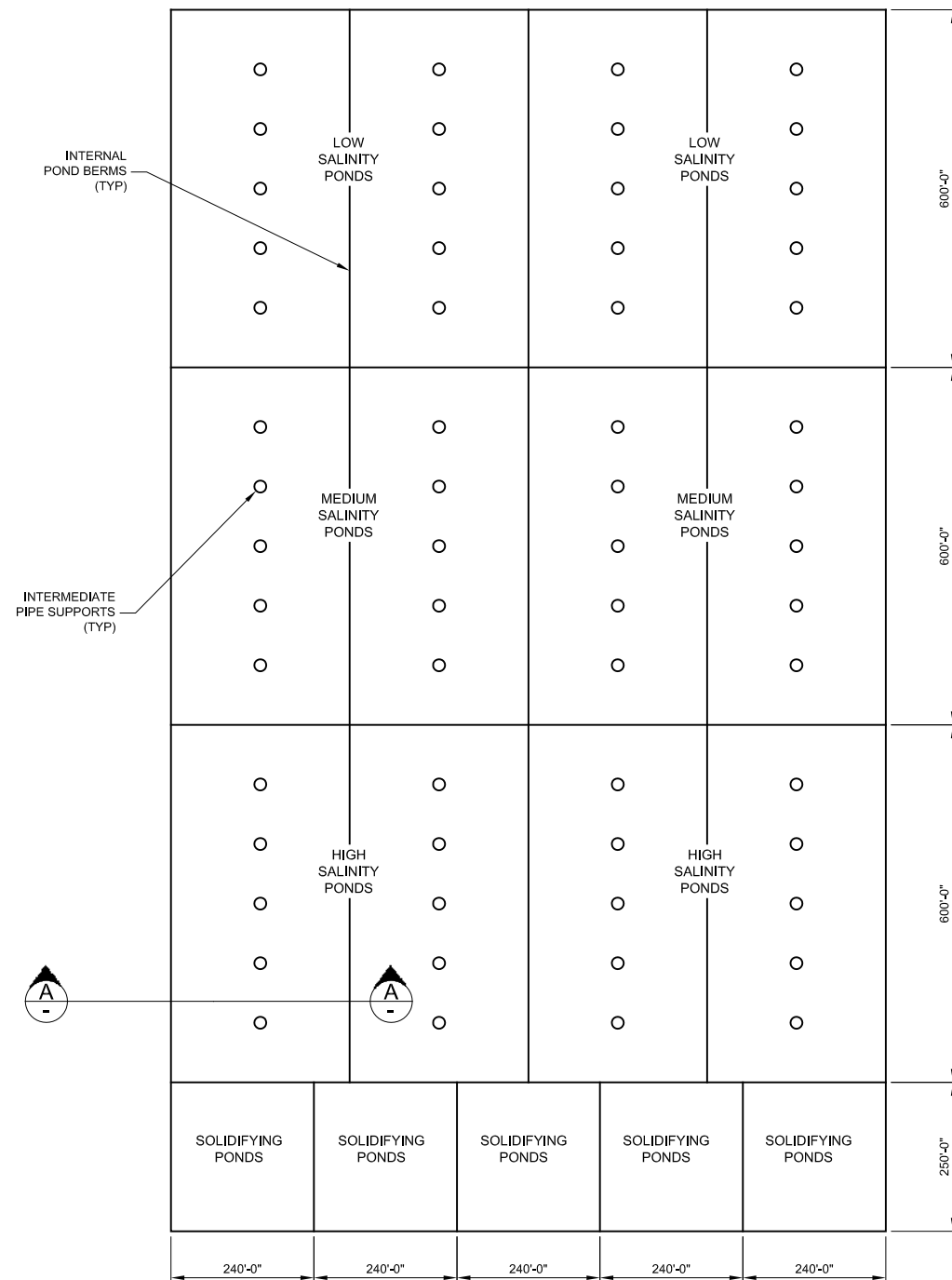
Figure 3.5-16. Aerial view of the Colorado River Aqueduct



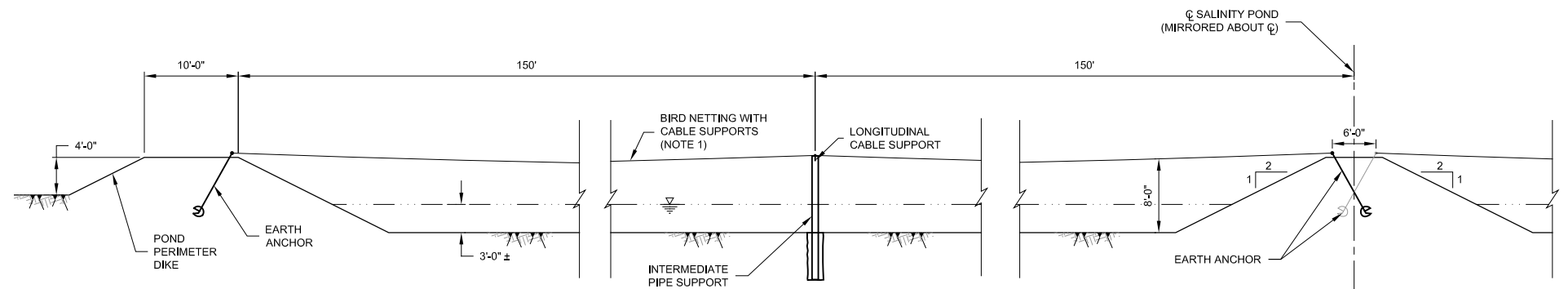
Figure 3.5-17. North Pond at Community of Lake Tamarisk



Figure 3.5-18. South pond at Community of Lake Tamarisk.



PLAN- EVAPORATION POND



SECTION A

NOT TO SCALE

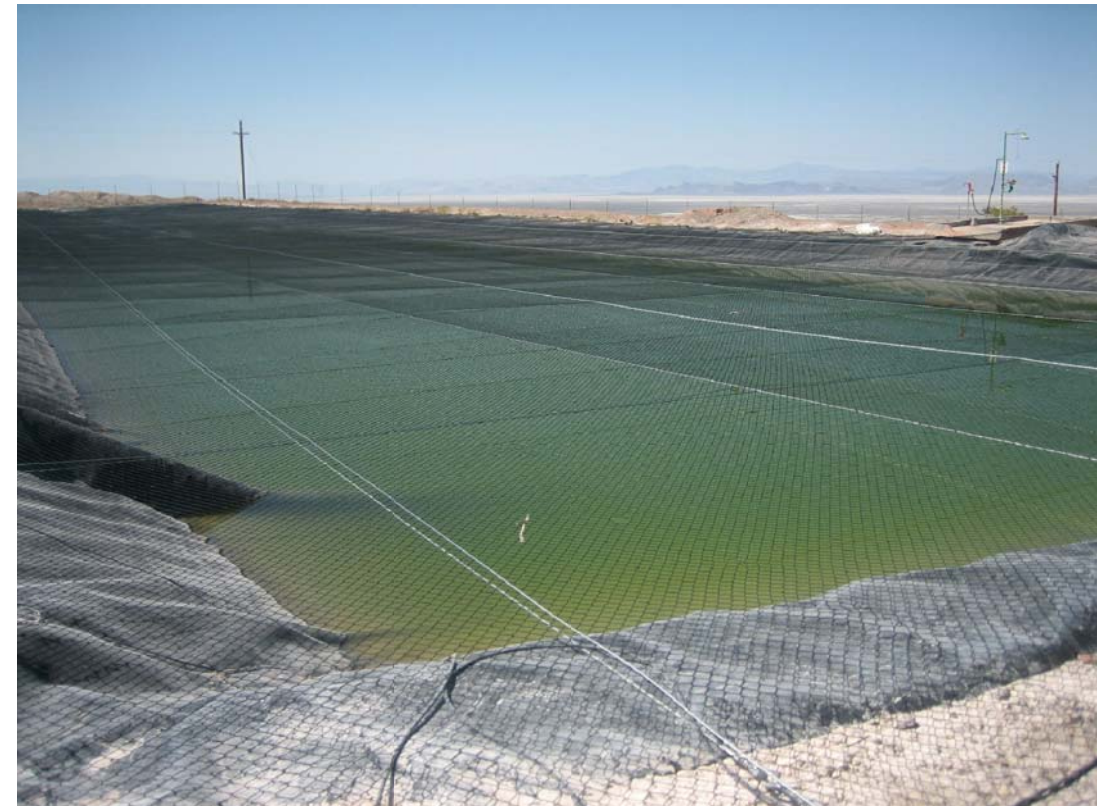
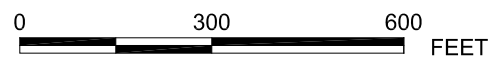


PHOTO COURTESY OF WILDLIFE CONTROL TECHNOLOGY, INC.

Legend

- NOTES:**
1. USE UV-TREATED POLYPROPYLENE SOLID-STRAND NET WITH 1-INCH OPENINGS. USE 3/16-INCH DIAMETER UV-TREATED COATED CABLE. ATTACH NETTING TO SUPPORT CABLES WITH HOG-RINGS SPACED AT 6-INCHES ON CENTER.



Environmental Impact Report
prepared for State Water Resources Control Board
by GEI Consultants, Inc.

Eastern Riverside County, California



RO BRINE EVAPORATION PONDS GENERAL PLAN AND SECTION OF BIRD NETTING

June 2010

Figure 3.5-19