

CURVE DATA	
Curve 1	Curve 12
Δ = 30°00'	Δ = 35°
R = 40.0'	R = 35'
T = 37.56'	T = 14.90'
L = 55.85'	L = 27.49'
Curve 6, 8, 10, 15	Curve 13
Δ = 35°00'	Δ = 35°
R = 53.75'	R = 40'
T = 46.95'	T = 36.82'
L = 52.85'	L = 38.45'
Curve 9	Curve 14
Δ = 27°40'	Δ = 35°
R = 40.87'	R = 48'
T = 11.5'	T = 17.61'
L = 23.83'	L = 24.43'

REFERENCE(S):
 SEE DRAWING 2576-110-P1K-WL-00020,
 P1K-WL-00020, P1K-WL-00030, P1K-WL-00040 OR
 P1K-WL-00050.
 438093 PG&E CIVIL

NOTE(S):
 SEE DRAWING 2576-110-P1K-WL-00010,
 P1K-WL-00020, P1K-WL-00030, P1K-WL-00040 OR
 P1K-WL-00050

FOR INFORMATION ONLY. DO NOT USE FOR PROCUREMENT, FABRICATION, OR CONSTRUCTION.

BECTEL CONFIDENTIAL & 2013 BECTEL POWER CORPORATION (BECTEL) CONFIDENTIAL INFORMATION. CONFIDENTIAL AND/OR PROPRIETARY TO BECTEL AND ITS AFFILIATED COMPANIES THAT IS NOT TO BE USED, DISCLOSED, OR REPRODUCED IN ANY FORM BY ANY NON-BECTEL PARTY WITHOUT BECTEL'S PRIOR WRITTEN PERMISSION. ALL RIGHTS RESERVED.

NO.	DATE	REVISION	BY	CHK	APP
1		ISSUE FOR INTERNAL ESTIMATE			

SCALE: _____

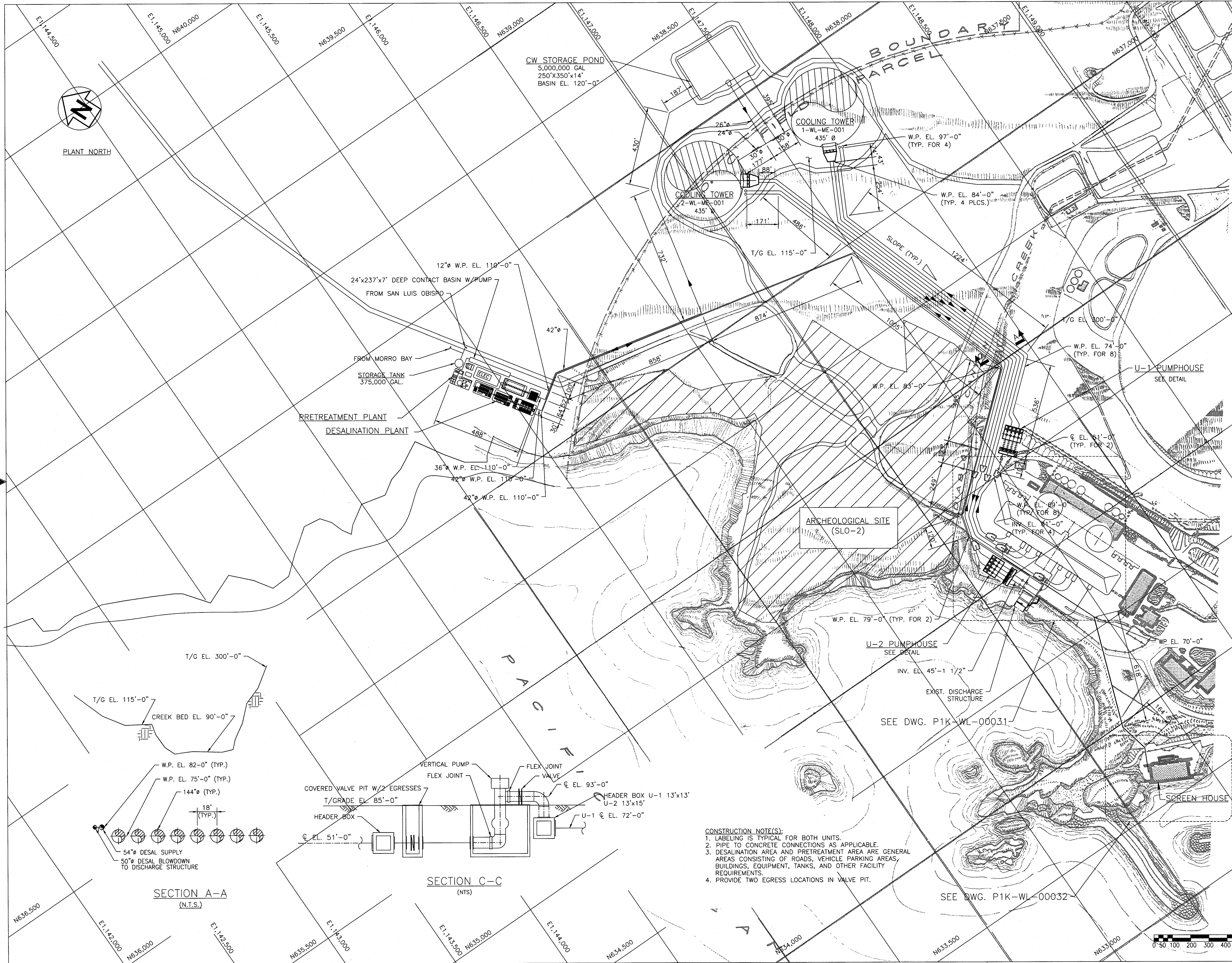
BECTEL
 FREDERICK, MARYLAND

PACIFIC GAS AND ELECTRIC
 DIABLO CANYON POWER PLANT

CIRCULATING WATER SYSTEM
 COOLING TOWER CONDUIT REMOVAL
 GENERAL ARRANGEMENT

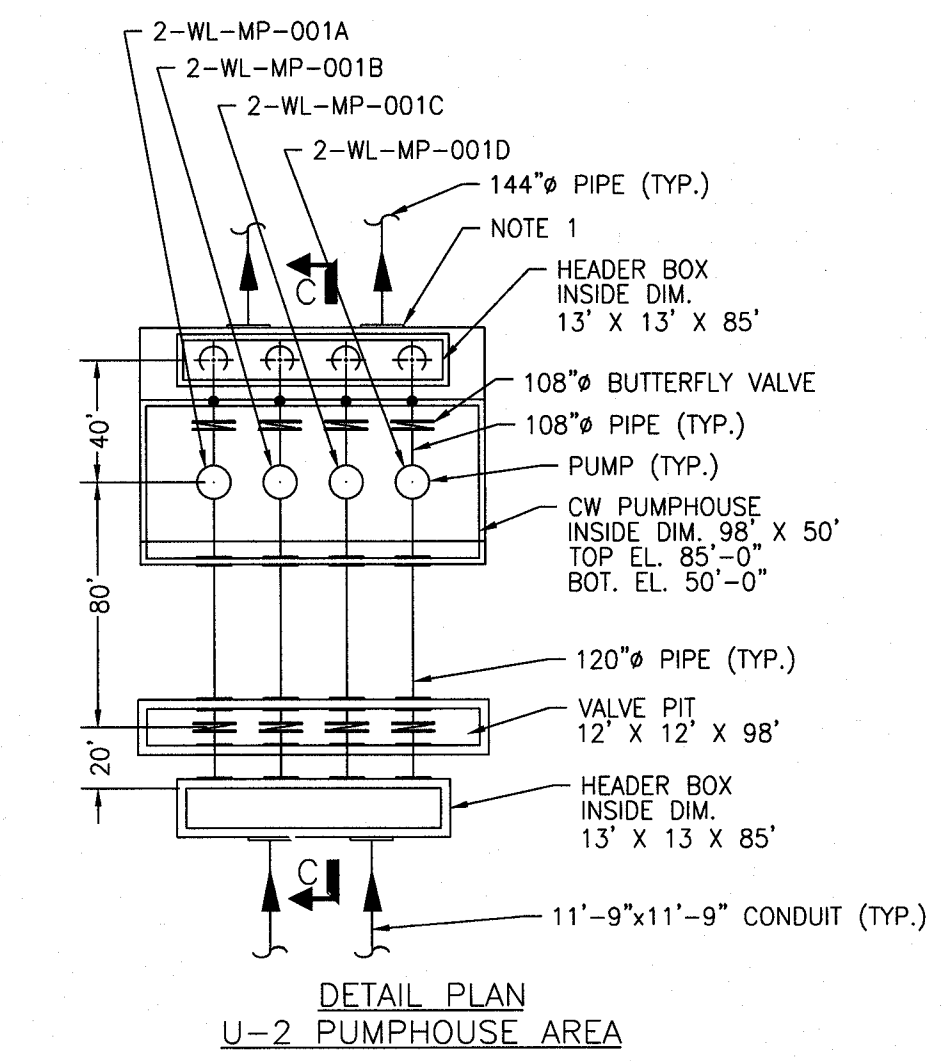
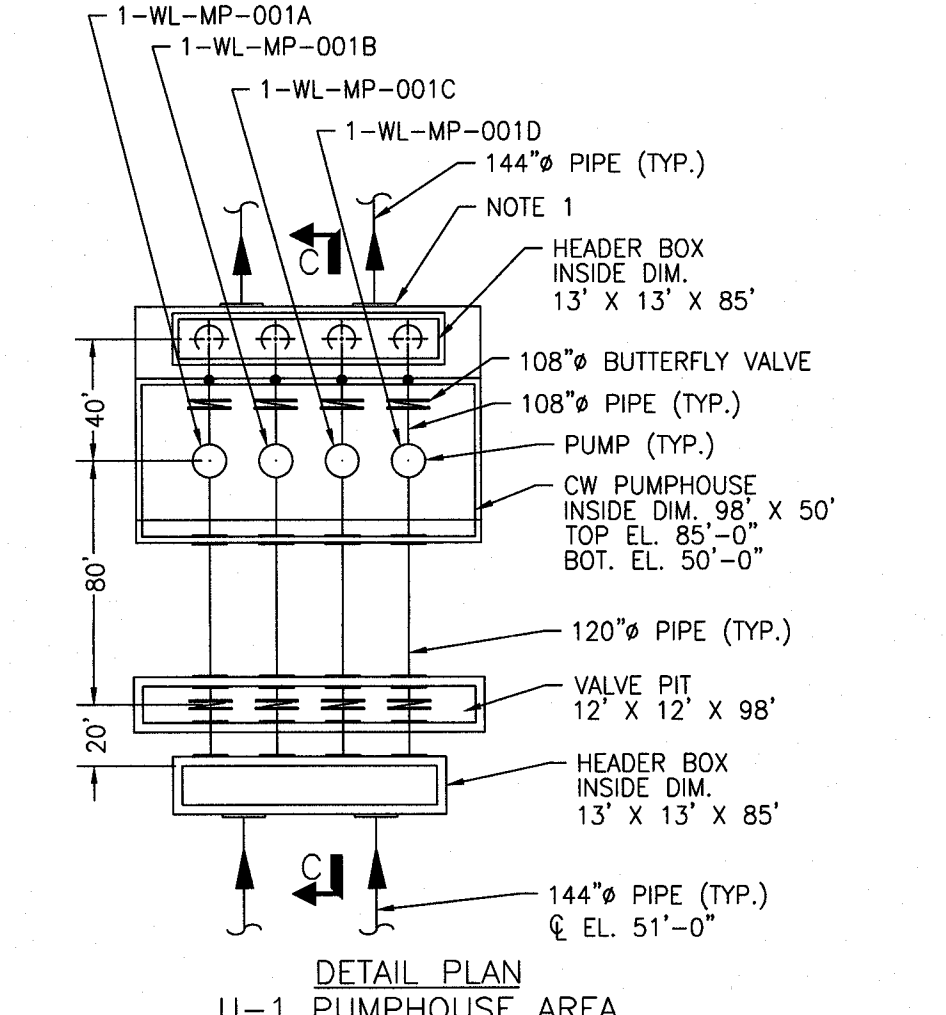
JOB NO.	DRAWING NO.	REV.
25762-110	P1K-WL-00013	A

3/4" X 4" SIZE



REFERENCE DRAWING(S):

25762-110-M5K-WL-0005	BECHTEL PFD COOLING TOWER
25762-110-M6K-WL-0005	BECHTEL P&ID COOLING TOWER
25762-110-M6K-WO-00001	BECHTEL P&ID DESAL & BRINE
25762-110-M6K-WR-00001	BECHTEL P&ID RECLAIM WATER
25762-110-P1K-WL-00013	BECHTEL RECLAIM WATER
25762-110-P1K-WL-00031	BECHTEL GA
25762-110-P1K-WL-00032	BECHTEL GA
25762-110-ERK-WL-00030	BECHTEL ELEC. RACEWAY
438093	PG&E CIVIL CONDUIT
438099	PG&E CIVIL CONDUIT
438118	PG&E CIVIL DISCHARGE STRUCTURE
438120	PG&E CIVIL DISCHARGE STRUCTURE
438172	PG&E CIVIL GA YARD UTIL.
438300	PG&E CIVIL CONDUIT TURB. BLDG.
FR-04-13-00002-P	COOLING TOWER
A01-GA-001	SUEZ GA DESALINATION PLANT
50136768-001	INFILCO P&ID RECLAIM WATER
50136768-100	SUEZ GA RECLAIM WATER PLANT



FOR INFORMATION ONLY. DO NOT USE FOR PROCUREMENT, FABRICATION, OR CONSTRUCTION.

BECHTEL CONFIDENTIAL. © 2013 BECHTEL POWER CORPORATION (BECHTEL) CONTAINS INFORMATION CONFIDENTIAL AND/OR PROPRIETARY TO BECHTEL AND ITS AFFILIATED COMPANIES THAT IS NOT TO BE USED, DISCLOSED, OR REPRODUCED IN ANY FORM BY ANY NON-BECHTEL PARTY WITHOUT BECHTEL'S PRIOR WRITTEN PERMISSION. ALL RIGHTS RESERVED.

REVISION	DATE	BY	CHK	ENGR	PRBL	ENGR
1						
2						
3						
4						
5						
6						
7						
8						
9						
10						
11						
12						
13						
14						
15						
16						
17						
18						
19						
20						
21						
22						
23						
24						
25						
26						
27						
28						
29						
30						
31						
32						
33						
34						
35						
36						
37						
38						
39						
40						
41						
42						
43						
44						
45						
46						
47						
48						
49						
50						

BECHTEL
FREDERICK, MARYLAND

PACIFIC GAS AND ELECTRIC
DIABLO CANYON POWER PLANT

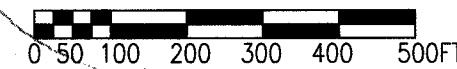
CIRCULATING WATER SYSTEM
HYBRID DRAFT COOLING TOWER
GENERAL ARRANGEMENT

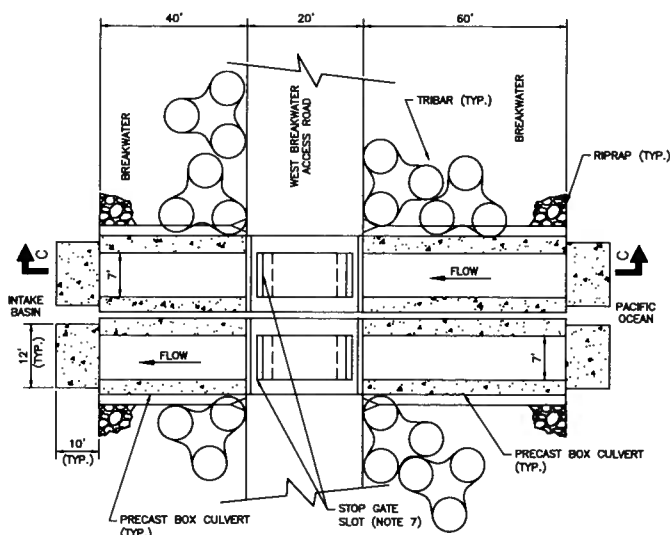
JOB NO.	DRAWING NO.	REV
25762-110	P1K-WL-00030	D

- CONSTRUCTION NOTE(S):**
1. LABELING IS TYPICAL FOR BOTH UNITS.
 2. PIPE TO CONCRETE CONNECTIONS AS APPLICABLE.
 3. DESALINATION AREA AND PRETREATMENT AREA ARE GENERAL AREAS CONSISTING OF ROADS, VEHICLE PARKING AREAS, BUILDINGS, EQUIPMENT, TANKS, AND OTHER FACILITY REQUIREMENTS.
 4. PROVIDE TWO EGRESS LOCATIONS IN VALVE PIT.

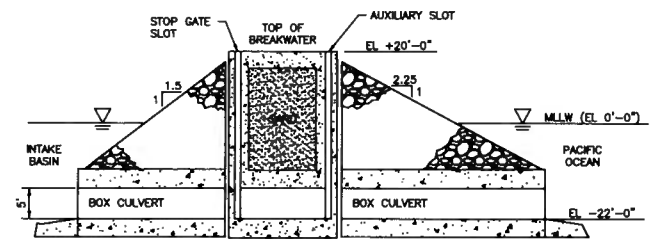
SECTION A-A
(N.T.S.)

SECTION C-C
(NTS)

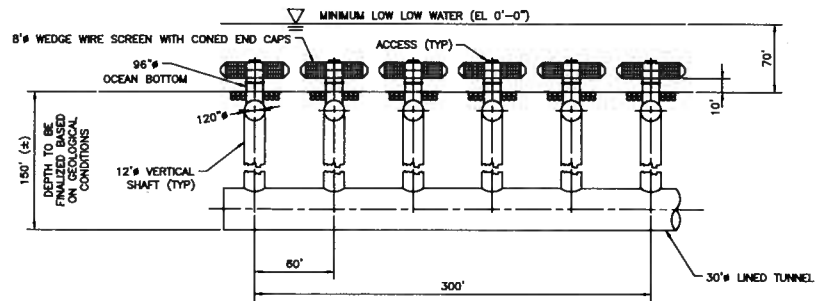




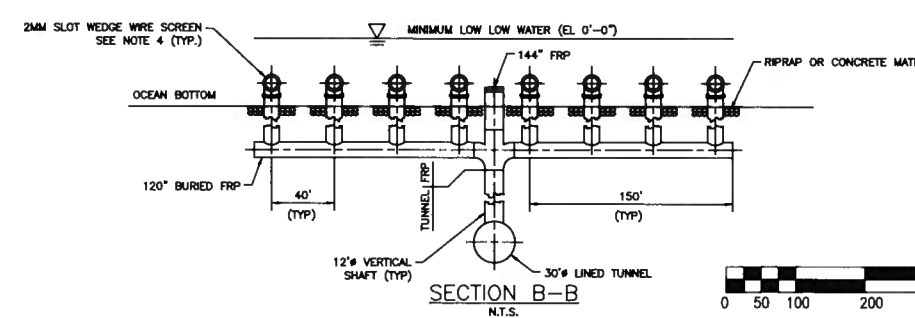
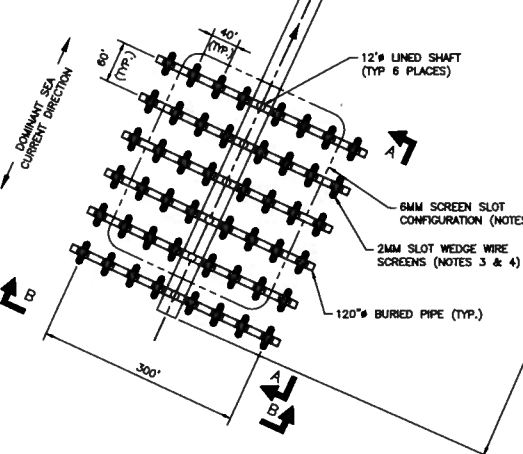
DETAIL 1
N.T.S.



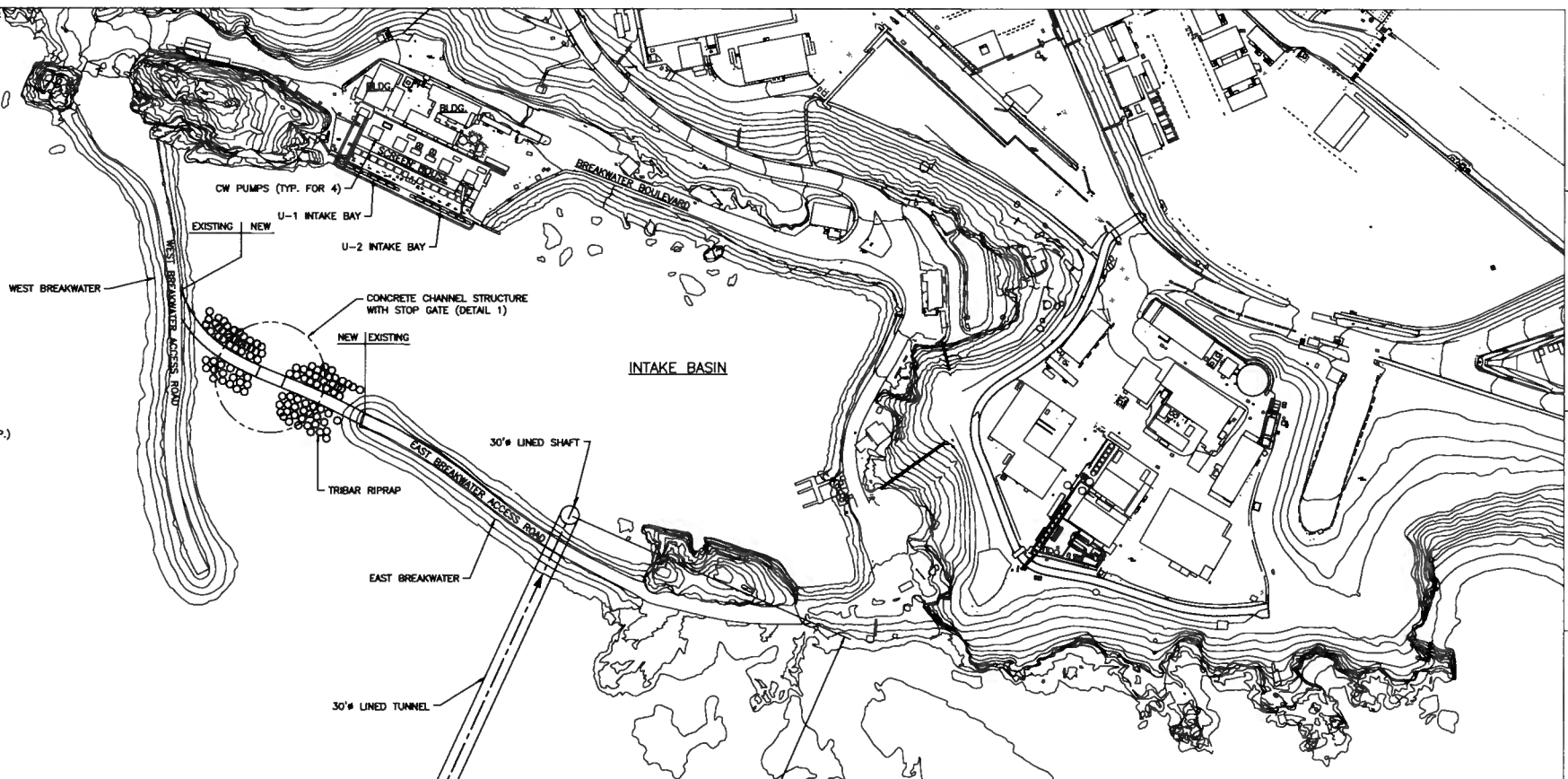
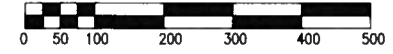
SECTION C-C
N.T.S.



SECTION A-A
N.T.S.



SECTION B-B
N.T.S.



REFERENCE DRAWINGS

25762-110-MBK-00006	BECTEL	P&ID
439851	DCPP	CIVIL
439852	DCPP	CIVIL
512291	DCPP	BREAKWATER
512292	DCPP	TRIPBAR
PAT. # 6051,131	JOHNSON SCREEN ASSEMBLY	

- NOTES
- OPERATION OF BREAKWATERS MAY HAVE ALTERED THE OCEAN BED ELEVATIONS.
 - ALL ELEVATIONS ARE MLLW ELEVATIONS.
 - 48 - 2MM SCREEN SLOT CONFIGURATION IS SHOWN FOR 6MM SCREEN SLOT 30 SCREENS ARE REQUIRED.
 - WEDGE WIRE SCREEN DIMENSIONS FOR 2MM SLOT ARE 96" OD x 418" LONG WITH AN OUTLET SIZE OF 96". THE 6MM SLOT DIMENSIONS ARE THE SAME AS THE 2MM.
 - FLANGE CONNECTION REQUIRED BETWEEN DISSIMILAR MATERIALS.
 - RIPRAP PLACEMENT ON AREA OVER BURIED PIPES AND UNDER THE SCREENS.
 - STOP GATE ONLY REQUIRED IN ONE SLOT PER FLOW PATH. AUXILIARY SLOT MAY BE USED FOR MAINTENANCE PURPOSES.

FOR INFORMATION ONLY. DO NOT USE FOR PROCUREMENT, FABRICATION, OR CONSTRUCTION.

REVISIONS

NO.	DATE	REVISION	BY	CHKD.	APPV.

BECTEL
FREDERICK, MARYLAND

PACIFIC GAS AND ELECTRIC
DIABLO CANYON POWER PLANT

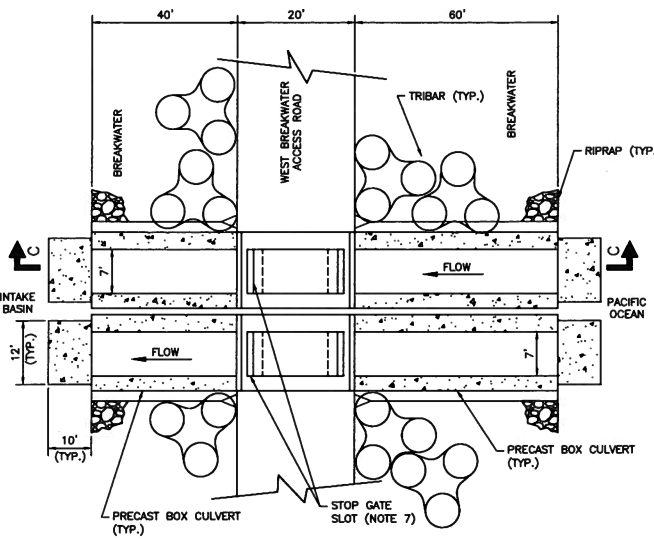
CIRCULATING WATER SYSTEM
WEDGE WIRE SCREENS
GENERAL ARRANGEMENT

JOB NO.	DRAWING NO.	REV.
25762-110	P1K-WL-00060	B

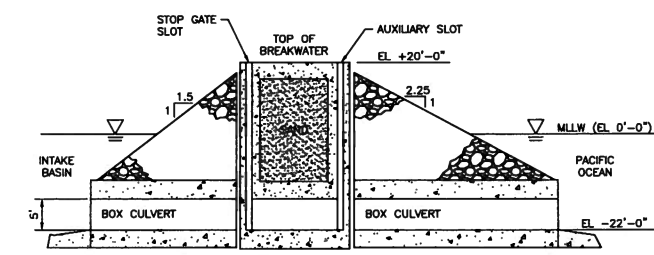
© Copyright Bechtel Corporation 2005. All rights reserved. Contains confidential information. Use of this drawing is prohibited without Bechtel's prior written permission.



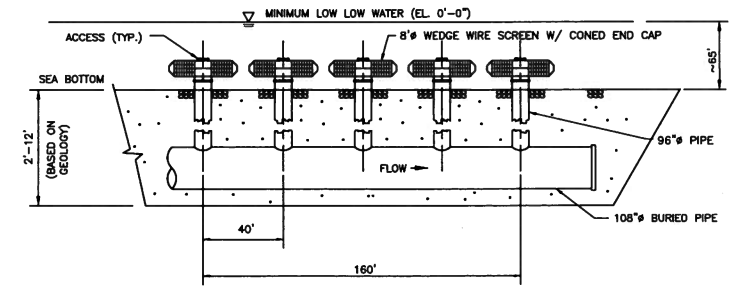
Copyright Bechtel Corporation 2005. All rights reserved. Contains confidential information. Contains confidential information to third parties without Bechtel's prior written permission.



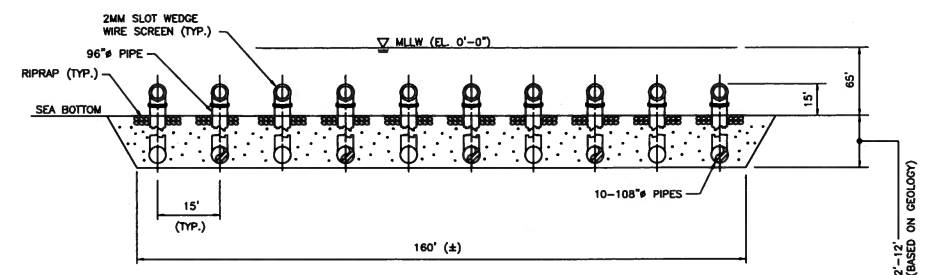
DETAIL 1
N.T.S.



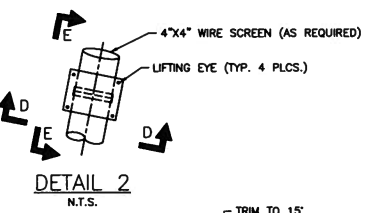
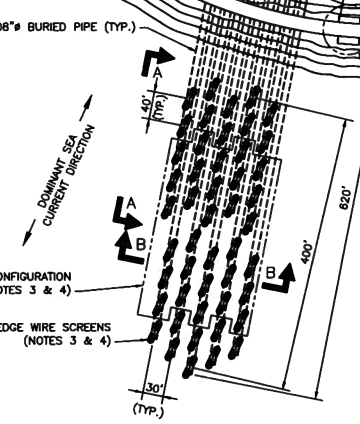
SECTION C-C
N.T.S.



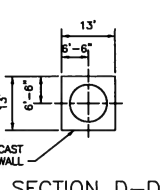
SECTION A-A
N.T.S.



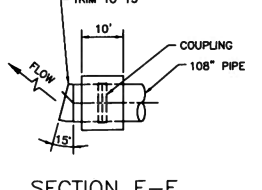
SECTION B-B
N.T.S.



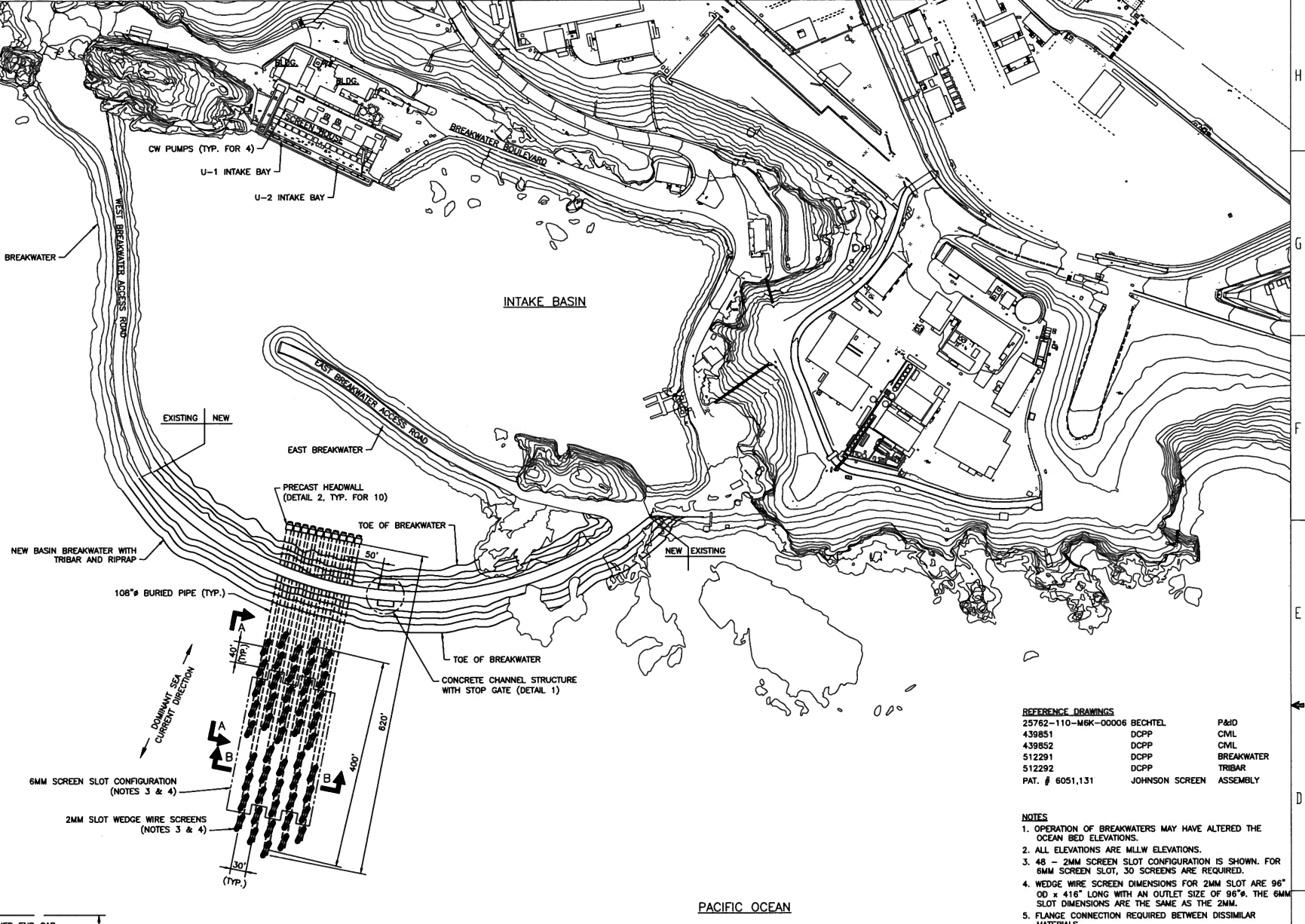
DETAIL 2
N.T.S.



SECTION D-D
N.T.S.



SECTION E-E
N.T.S.



REFERENCE DRAWINGS

25762-110-M&K-0006	BECHTEL	P&ID
439851	DCPP	CIVIL
439852	DCPP	CIVIL
512291	DCPP	BREAKWATER
512292	DCPP	TRIBAR
PAT. # 6051,131	JOHNSON SCREEN	ASSEMBLY

- NOTES
- OPERATION OF BREAKWATERS MAY HAVE ALTERED THE OCEAN BED ELEVATIONS.
 - ALL ELEVATIONS ARE MLW ELEVATIONS.
 - 48 - 2MM SCREEN SLOT CONFIGURATION IS SHOWN. FOR 6MM SCREEN SLOT, 30 SCREENS ARE REQUIRED.
 - WEDGE WIRE SCREEN DIMENSIONS FOR 2MM SLOT ARE 96" OD x 416" LONG WITH AN OUTLET SIZE OF 96". THE 6MM SLOT DIMENSIONS ARE THE SAME AS THE 2MM.
 - FLANGE CONNECTION REQUIRED BETWEEN DISSIMILAR MATERIALS.
 - RIPRAP PLACEMENT ON AREA OVER BURIED PIPES AND UNDER THE SCREENS.
 - STOP GATE ONLY REQUIRED IN ONE SLOT PER FLOW PATH. AUXILIARY SLOT MAY BE USED FOR MAINTENANCE PURPOSES.

FOR INFORMATION ONLY. DO NOT USE FOR PROCUREMENT, FABRICATION, OR CONSTRUCTION.

REVISIONS

NO.	DATE	REVISION	BY	CHK	APP	DATE

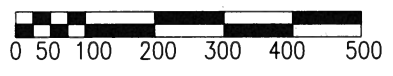
ISSUE FOR INTERNAL ESTIMATE

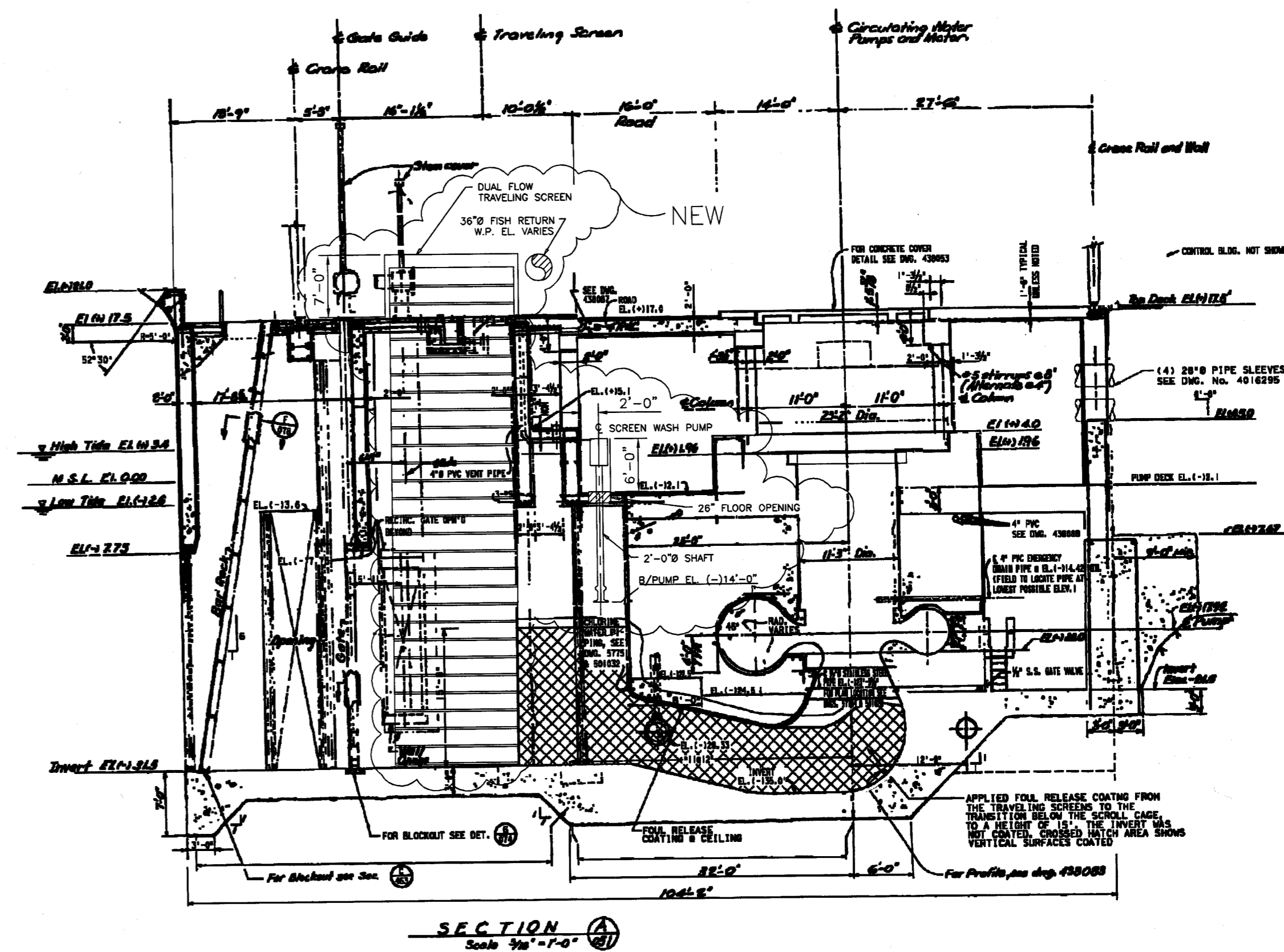
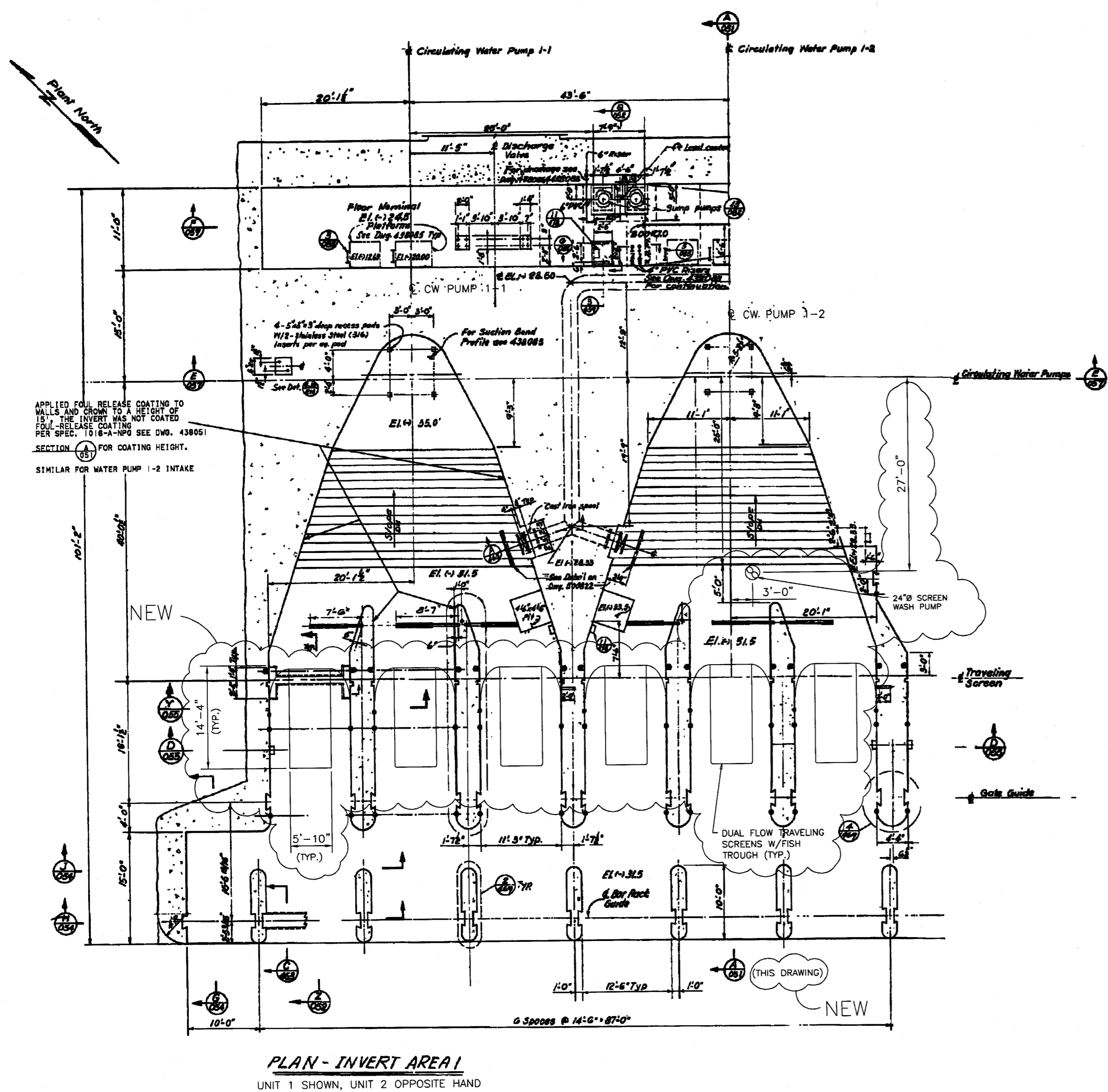
BECHTEL
FREDERICK, MARYLAND

PACIFIC GAS AND ELECTRIC
DIABLO CANYON POWER PLANT

CIRCULATING WATER SYSTEM
WEDGE WIRE SCREENS
ALTERNATE GENERAL ARRANGEMENT

JOB NO.	DRAWING NO.	REV.
25762-110	P1K-WL-00061	A





REFERENCE(S):
SEE DRAWING 2576-110-P1K-WL-00071

NOTE(S):
SEE DRAWING 2576-110-P1K-WL-00071

FOR INFORMATION ONLY. DO NOT USE FOR PROCUREMENT, FABRICATION, OR CONSTRUCTION.

BECHTEL CONFIDENTIAL. © 2013 BECHTEL POWER CORPORATION (BECHTEL) CONTAINS INFORMATION CONFIDENTIAL AND/OR PROPRIETARY TO BECHTEL AND ITS AFFILIATED COMPANIES THAT IS NOT TO BE USED, DISCLOSED, OR REPRODUCED IN ANY FORM BY ANY NON-BECHTEL PARTY WITHOUT BECHTEL'S PRIOR WRITTEN PERMISSION. ALL RIGHTS RESERVED.

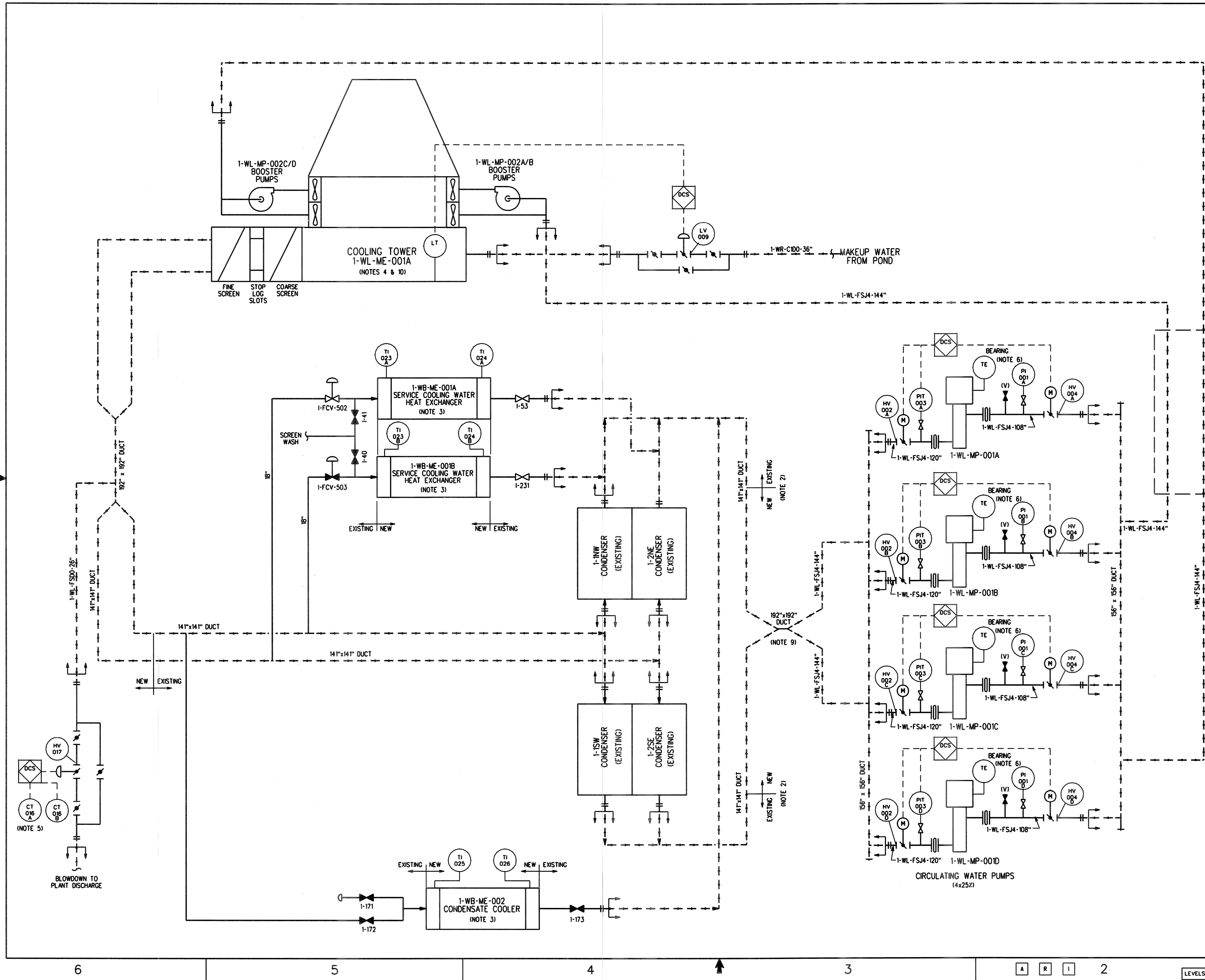
△	1/12								
△	2/12	REMOVED BOSKER RAKE	AP	MJB	DED				
△	08/27/13	ISSUE FOR ESTIMATE	DMH	MJB	DED				
△	09/23/13	ISSUE FOR INTERNAL ESTIMATE	DMH						
△	09/23/13	ISSUE FOR PRELIMINARY REVIEW	DMH	MJB	DED				
NO.	DATE	REVISIONS	BY	CHK	DES	SUPV.	INCH	PROJ	ENGR
SCALE	DATE	DESIGNER	DRAWN	ENGR					

BECHTEL
FREDERICK, MARYLAND

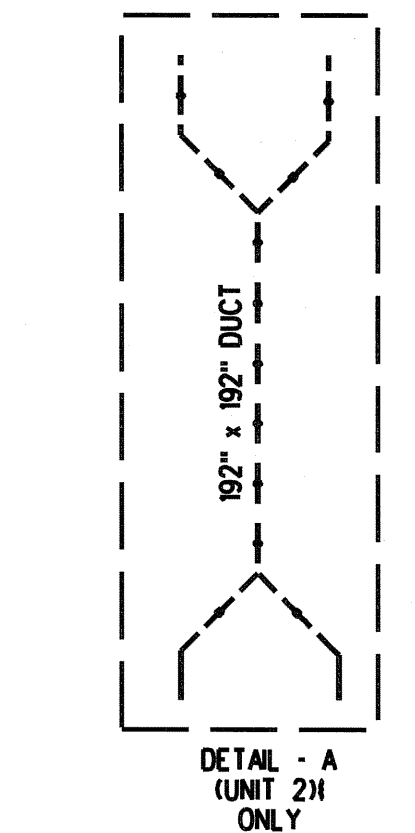
PACIFIC GAS AND ELECTRIC
DIABLO CANYON POWER PLANT

CIRCULATING WATER SYSTEM
FINE MESH TRAVELING SCREEN
GENERAL ARRANGEMENT

JOB NO.	DRAWING NO.	REV.
25762-110	P1K-WL-00070	D



- NOTES:
1. PID SHOWS UNIT 1 SYSTEM. UNIT 2 SYSTEM IS IDENTICAL EXCEPT AS NOTED AND EQUIPMENT NUMBERS BEGINNING WITH "2".
 2. PLANT DISCHARGE DUCT MODIFIED WHERE THE CONDENSER RETURNS FROM EACH UNIT JOIN THE DUCT. THE COMBINED DUCTS ARE JOINED AND SEALED FROM THE PLANT DISCHARGE TO THE OCEAN.
 3. SERVICE COOLING WATER HEAT EXCHANGERS AND CONDENSATE COOLER HAVE BEEN REPLACED.
 4. COOLING TOWER INSTRUMENTATION AND CONTROL DEVICES WILL BE PROVIDED BY COOLING TOWER PACKAGE VENDOR.
 5. CONDUCTIVITY IS MEASURED AT OUTLET OF COOLING TOWER.
 6. BEARING AND MOTOR COOLING WILL BE PROVIDED BY THE PUMP SUPPLIER. TROUBLE COOLING ANNUNCIATED IN THE MAIN CONTROL ROOM.
 7. NOT USED
 8. EXISTING INSTRUMENTATION, VENTS, DRAINS, ETC. ARE NOT DEPICTED ON PID.
 9. EACH 141" x 141" CONCRETE DUCT FROM THE UNIT 2 CONDENSER SHELLS ARE ROUTED DIRECTLY TO THE UNIT 2 156" x 156" CONCRETE DUCT CIRCULATING WATER PUMP SUCTION HEADER (THE 192" x 192" CONCRETE DUCT AND WL-FSJ4-144" SUCTION PIPE DO NOT EXIST ON UNIT 2).
 10. CIRCULAR HYBRID TOWER WITH 40 DRY SECTION FANS AND 40 WET SECTION FANS.



FOR INFORMATION ONLY. DO NOT USE FOR PROCUREMENT, FABRICATION, OR CONSTRUCTION.

PRELIMINARY PIDs ARE ISSUED FOR PROPOSAL INFORMATION. BECHTEL RESERVES THE RIGHT TO MAKE REVISIONS DURING FINAL DESIGN.

BECHTEL CORPORATION © 2013 BECHTEL POWER CORPORATION (BECHTEL) CONTAINS INFORMATION CONFIDENTIAL AND/OR PROPRIETARY TO BECHTEL AND ITS AFFILIATED COMPANIES THAT IS NOT TO BE USED, REPRODUCED, OR DISCLOSED IN ANY FORM BY ANY NON-BECHTEL PARTY WITHOUT BECHTEL'S PRIOR WRITTEN PERMISSION. ALL RIGHTS RESERVED.

NO.	DATE	REVISIONS	BY	CHK	MECH SUPV	CS SUPV	PD SUPV	PROJ ENGR

SCALE: DESIGNED: DRAWN: CHIEF ENGR

BECHTEL
DEDICATED TO SAFETY EXCELLENCE - ZERO ACCIDENTS
FREDERICK, MARYLAND

PACIFIC GAS & ELECTRIC
DIABLO CANYON

PIPING & INSTRUMENT SCHEMATIC
CIRCULATING WATER SYSTEM
HYBRID COOLING OPTION

JOB NO. 25762-110 DRAWING NO. M6K-WL-00005 REV C

JUOTC DRY NATURAL DRAFT CT OPTION

DCPP

Valve List

00B	7/11/2013	Issued for Estimate Report	RP	-	RP
00A	7/11/2013	Issue for Estimate	RP	-	RP
Rev	Date	Reason for Revision	Originator	Checked	Approved

JUOTC DRY NATURAL DRAFT CT OPTION
DCPP
Valve List

25762-110-M6X-YA-00001
Rev. 00B

System Codes

Commodity Code

PF	Fire System	PV	Valve
WL	Circulating Water	HV	valve with motor or pneumatic operator used for on /off operation
WO	Salt Water Cooling	PIV	Post Indicating Valve

Note:

- 1 Valves furnished with vendor packages are not included in this list. Some valves supplied by the cooling tower supplier have been included in the equipment list to help define the scope of supply by

JUOTC STUDY - Dry Natural Draft CT OPTION
DCPP
Valve List

25761-110-M6X-YA-00001
Rev. 00B

Description	Unit	Comm	System	Valve Seq. No.	Suffix	Dia (in)	Valve Type	Act. Type	End Prep.	Design Press (psig)	Design Temp (°F)	Service Press (psig)	Service Temp (°F)	P&ID	Heat Trace (Yes/No)	Bid	Remarks	Rev
Salt Water Cooling Pump WO-MP-001A discharge, HV 022A	1	HV	WO	022	A	24	Butterfly	Motor	flange	100	70	75	56	25762-110-M6K-WL-00001	No	Valve Quote	Ductile iron, rubber lined, general service, lug type,	00A
Salt Water Cooling Pump WO-MP-001B discharge, HV 022B	1	PV	WO	022	B	24	Butterfly	Motor	flange	100	70	75	56	25762-110-M6K-WL-00001	No	Valve Quote	Ductile iron, rubber lined, general service, lug type,	00A
Inlet to PI021A	1	PV	WO			1	gate		flange	100	70	75	56	25762-110-M6K-WL-00001	No	Estimating	Super duplex material	00A
Outlet to WO-MP-001A auto vent isolation	1	PV	WO			2	ball		flange	100	70	75	56	25762-110-M6K-WL-00001	No	Estimating	Super duplex material	00A
Outlet to WO-MP-001A auto vent	1	PV	WO			2	AR		flange	100	70	75	56	25762-110-M6K-WL-00001	No	Estimating	Super duplex material	00A
Inlet to PI021B	1	PV	WO			1	gate		flange	100	70	75	56	25762-110-M6K-WL-00001	No	Estimating	Super duplex material	00A
Outlet to WO-MP-001B auto vent isolation	1	PV	WO			2	ball		flange	100	70	75	56	25762-110-M6K-WL-00001	No	Estimating	Super duplex material	00A
Outlet to WO-MP-001B auto vent	1	PV	WO			2	AR		flange	100	70	75	56	25762-110-M6K-WL-00001	No	Estimating	Super duplex material	00A
Upstream of HV009A to Makeup Water Line	1	PV	WL			6	gate		flange	100	70	50	56	25762-110-M6K-WL-00001	No	Estimating	Duplex SS material	00A
On Makeup Water Line, HV009A	1	HV	WL	009	A	6	globe	Air	flange	100	70	50	56	25762-110-M6K-WL-00001	No	Estimating	Duplex SS material	00A
Downstream of HV009A isolation	1	PV	WL			6	gate		flange	100	70	50	56	25762-110-M6K-WL-00001	No	Estimating	Duplex SS material	00A
Upstream of HV009B to Makeup Water Line	1	PV	WL			6	gate		flange	100	70	50	56	25762-110-M6K-WL-00001	No	Estimating	Duplex SS material	00A
On Makeup Water Line, HV009B	1	PV	WL	009	B	6	globe	Air	flange	100	70	50	56	25762-110-M6K-WL-00001	No	Estimating	Duplex SS material	00A
Downstream of HV009B isolation	1	PV	WL			6	gate		flange	100	70	75	56	25762-110-M6K-WL-00001	No	Estimating	Duplex SS material	00A
On PIT003A	1	PV	WL			1	gate			50	70	75	56	25762-110-M6K-WL-00001	No	Estimating	Duplex SS material	00A

JUOTC STUDY - Dry Natural Draft CT OPTION
DCPP
Valve List

25761-110-M6X-YA-00001
Rev. 00B

Description	Unit	Comm	System	Valve Seq. No.	Suffix	Dia (in)	Valve Type	Act. Type	End Prep.	Design Press (psig)	Design Temp (°F)	Service Press (psig)	Service Temp (°F)	P&ID	Heat Trace (Yes/No)	Bid	Remarks	Rev
On PIT003B	1	PV	WL			1	gate		flange	50	70	75	56	25762-110-M6K-WL-00001	No	Estimating	Super duplex material	00A
On PIT003C	1	PV	WL			1	gate		flange	50	70	75	56	25762-110-M6K-WL-00001	No	Estimating	Duplex SS material	00A
On PIT003D	1	PV	WL			1	Gate		flange	100	70	75	56	25762-110-M6K-WL-00001	No	Estimating	Duplex SS material	00A
Outlet from WL-MP-001A vent	1	PV	WL			2	globe		flange	50	70	75	56	25762-110-M6K-WL-00001	No	Estimating	Duplex SS material	00A
Outlet from WL-MP-001B vent	1	PV	WL			2	globe		flange	85	70	75	56	25762-110-M6K-WL-00001	No	Estimating	Duplex SS material	00A
Outlet from WL-MP-001C vent	1	PV	WL			2	globe		flange	85	70	75	56	25762-110-M6K-WL-00001	No	Estimating	Duplex SS material	00A
Outlet from WL-MP-001D vent	1	PV	WL			2	globe		flange	85	70	75	56	25762-110-M6K-WL-00001	No	Estimating	Duplex SS material	00A
Root connection to PI 001A	1	PV	WL			1	gate		flange	85	70	75	56	25762-110-M6K-WL-00001	No	Estimating	Duplex SS material	00A
Root connection to PI 001B	1	PV	WL			1	gate		flange	85		75	56	25762-110-M6K-WL-00001	No	Estimating	Duplex SS material	00A
Root connection to PI 001C	1	PV	WL			1	gate		flange	85	70	75	56	25762-110-M6K-WL-00001	No	Estimating	Duplex SS material	00A
Root connection to PI 001D	1	PV	WL			1	gate		flange	85	70	75	56	25762-110-M6K-WL-00001	No	Estimating	Duplex SS material	00A
Salt Water Cooling Pump WO-MP-001A discharge, HV 022A	2	HV	WO	022	A	24	Butterfly	Motor	flange	100	70	75	56	25762-110-M6K-WL-00001	No	Valve Quote	Ductile iron, rubber lined, general service, lug type,	00A
Salt Water Cooling Pump WO-MP-001B discharge, HV 022B	2	HV	WO	022	B	24	Butterfly	Motor	flange	100	70	75	56	25762-110-M6K-WL-00001	No	Valve Quote	Ductile iron, rubber lined, general service, lug type,	00A
Inlet to PI021A	2	PV	WO			1	gate		flange	100	70	75	56	25762-110-M6K-WL-00001	No	Estimating	Super duplex material	00A
Outlet to WL-MP-001A auto vent isolation	2	PV	WO			2	ball		flange	100	70	75	56	25762-110-M6K-WL-00001	No	Estimating	Super duplex material	00A

JUOTC STUDY - Dry Natural Draft CT OPTION
DCPP
Valve List

25761-110-M6X-YA-00001
Rev. 00B

Description	Unit	Comm	System	Valve Seq. No.	Suffix	Dia (in)	Valve Type	Act. Type	End Prep.	Design Press (psig)	Design Temp (°F)	Service Press (psig)	Service Temp (°F)	P&ID	Heat Trace (Yes/No)	Bid	Remarks	Rev
Outlet to WO-MP-001A auto vent	2	PV	WO			2	AR		flange	100	70	75	56	25762-110-M6K-WL-00001	No	Estimating	Super duplex material	00A
Inlet to PI021B	2	PV	WO			1	gate		flange	100	70	75	56	25762-110-M6K-WL-00001	No	Estimating	Super duplex material	00A
Outlet to WO-MP-001B auto vent isolation	2	PV	WO			2	ball		flange	100	70	75	56	25762-110-M6K-WL-00001	No	Estimating	Super duplex material	00A
Outlet to WO-MP-001B auto vent	2	PV	WO			2	AR		flange	100	70	75	56	25762-110-M6K-WL-00001	No	Estimating	Super duplex material	00A
Upstream of HV009A on Makeup Water Line	2	PV	WL			6	gate		flange	100	70	75	56	25762-110-M6K-WL-00001	No	Estimating	Duplex SS material	00A
On Makeup Water Line, HV009A	2	HV	WL	009	A	6	globe	Air	flange	100	70	75	56	25762-110-M6K-WL-00001	No	Estimating	Duplex SS material	00A
Downstream of HV009A on the Makeup Water Pump	2	HV	WL	009	B	6	gate		flange	100	70	75	56	25762-110-M6K-WL-00001	No	Estimating	Duplex SS material	00A
Upstream of HV009B on Makeup Water Line	2	PV	WL			6	gate		flange	100	70	75	56	25762-110-M6K-WL-00001	No	Estimating	Duplex SS material	00A
On Makeup Water Line, HV009B	2	PV	WL			6	globe	Motor	flange	100	70	75	56	25762-110-M6K-WL-00001	No	Estimating	Duplex SS material	00A
Downstream of HV009B on the Makeup Water Pump	2	PV	WL			6	gate		flange	100	70	75	56	25762-110-M6K-WL-00001	No	Estimating	Duplex SS material	00A
On PIT003A	2	PV	WL			1	Gate		flange	50	130	30	125	25762-110-M6K-WL-00001	No	Estimating	Duplex SS material	00A
On PIT003B	2	PV	WL			1	Gate		flange	50	130	30	125	25762-110-M6K-WL-00001	No	Estimating	Duplex SS material	00A
On PIT003C	2	PV	WL			1	Gate		flange	50	130	30	125	25762-110-M6K-WL-00001	No	Estimating	Duplex SS material	00A
On PIT003D	2	PV	WL			1	Gate		flange	50	130	30	125	25762-110-M6K-WL-00001	No	Estimating	Duplex SS material	00A
Outlet from WL-MP-001A vent	2	PV	WL			2	globe		flange	85	130	75	125	25762-110-M6K-WL-00001	No	Estimating	Duplex SS material	00A
Outlet from WL-MP-001B vent	2	PV	WL			2	globe		flange	85	130	75	125	25762-110-M6K-WL-00001	No	Estimating	Duplex SS material	00A

JUOTC STUDY - Dry Natural Draft CT OPTION
DCPP
Valve List

25761-110-M6X-YA-00001
Rev. 00B

Description	Unit	Comm	System	Valve Seq. No.	Suffix	Dia (in)	Valve Type	Act. Type	End Prep.	Design Press (psig)	Design Temp (°F)	Service Press (psig)	Service Temp (°F)	P&ID	Heat Trace (Yes/No)	Bid	Remarks	Rev
Outlet from WL-MP-001C vent	2	PV	WL			2	globe		flange	85	130	75	125	25762-110-M6K-WL-00001	No	Estimating	Duplex SS material	00A
Outlet from WL-MP-001D auto vent	2	PV	WL			2	globe		flange	85	130	75	125	25762-110-M6K-WL-00001	No	Estimating	Duplex SS material	00A
Root connection to PI 001A	2	PV	WL			1	gate		flange	85	130	75	125	25762-110-M6K-WL-00001	No	Estimating	Duplex SS material	00A
Root connection to PI 001B	2	PV	WL			1	gate		flange	85	130	75	125	25762-110-M6K-WL-00001	No	Estimating	Duplex SS material	00A
Root connection to PI 001C	2	PV	WL			1	gate		flange	85	130	75	125	25762-110-M6K-WL-00001	No	Estimating	Duplex SS material	00A
Root connection to PI 001D	2	PV	WL			1	gate		flange	85	130	75	125	25762-110-M6K-WL-00001	No	Estimating	Duplex SS material	00A
Inlet isolation WL-MP-001A	1	HV	WL	002	A	120	Butterfly	Motor	flange	50	130	30	125	25762-110-M6K-WL-00001	No	Valve Quote	Ductile Iron , epoxy coated or rubber lined	00B
Inlet isolation WL-MP-001B	1	HV	WL	002	B	120	Butterfly	Motor	flange	50	130	30	130	25762-110-M6K-WL-00001	No	Valve Quote	Ductile Iron , epoxy coated or rubber lined	00B
Inlet isolation WL-MP-001C	1	HV	WL	002	C	120	Butterfly	Motor	flange	50	130	30	125	25762-110-M6K-WL-00001	No	Valve Quote	Ductile Iron , epoxy coated or rubber lined	00B
Inlet isolation WL-MP-001D	1	HV	WL	002	D	120	Butterfly	Motor	flange	50	130	30	125	25762-110-M6K-WL-00001	No	Valve Quote	Ductile Iron , epoxy coated or rubber lined	00B
Inlet isolation WL-MP-001A	2	HV	WL	002	A	120	Butterfly	Motor	flange	50	130	30	125	25762-110-M6K-WL-00001	No	Valve Quote	Ductile Iron , epoxy coated or rubber lined	00B
Inlet isolation WL-MP-001B	2	HV	WL	002	B	120	Butterfly	Motor	flange	50	130	30	125	25762-110-M6K-WL-00001	No	Valve Quote	Ductile Iron , epoxy coated or rubber lined	00B
Inlet isolation WL-MP-001C	2	HV	WL	002	C	120	Butterfly	Motor	flange	50	130	30	125	25762-110-M6K-WL-00001	No	Valve Quote	Ductile Iron , epoxy coated or rubber lined	00B

JUOTC DRY MECHANICAL DRAFT CT OPTION

DCPP

Valve List

00B	7/29/2013	Issued for Estimate Report	RP	-	RP
00A	7/11/2013	Issue for Estimate	RP	-	RP
Rev	Date	Reason for Revision	Originator	Checked	Approved

JUOTC DRY MECHANICAL DRAFT CT OPTION
DCPP
Valve List

25762-110-M6X-YA-00002
Rev. 00B

System Codes

PF Fire Protection
WL Circulating Water
WO Salt Water Cooling

Commodity Code

PV Valve
HV valve with motor or pneumatic operator used for on /off operation

Note:

- 1 Valves furnished with vendor packages are not included in this list. Some valves supplied by the cooling tower supplier have been included in the equipment list to help define the scope of supply by the cooling Tower Supplier

JUOTC STUDY - Dry Mechanical Draft CT OPTION
DCPP
Valve List

25762-110-M6X-YA-00002
Rev. 00B

Description	Unit	Comm	System	Valve Seq. No.	Suffix	Dia (In)	Valve Type	Act. Type	End Prep.	Design Press (psig)	Design Temp (°F)	Service Press (psig)	Service Temp (°F)	Rating	P&ID	Heat Trace (Yes/No)	Bid	Remarks	Rev
Salt Water Cooling Pump WO-MP-001A discharge, HV 022A	1	HV	WO	022	A	24	Butterfly	Motor	flange	100	70	75	56		25762-110-M6KWL-00001	No	Valve Quote	Ductile iron, rubber lined, general service, lug type,	00A
Salt Water Cooling Pump WO-MP-001B discharge, HV 022B	1	PV	WO	022	B	24	Butterfly	Motor	flange	100	70	75	56		25762-110-M6KWL-00001	No	Valve Quote	Ductile iron, rubber lined, general service, lug type,	00A
Inlet to PI021A	1	PV	WO			1	gate		flange	100	70	75	56		25762-110-M6KWL-00001	No	Estimating	Super duplex material	00A
Outlet to WO-MP-001A auto vent isolation	1	PV	WO			2	ball		flange	100	70	75	56		25762-110-M6KWL-00001	No	Estimating	Super duplex material	00A
Outlet to WO-MP-001A auto vent	1	PV	WO			2	AR		flange	100	70	75	56		25762-110-M6KWL-00001	No	Estimating	Super duplex material	00A
Inlet to PI021B	1	PV	WO			1	gate		flange	100	70	75	56		25762-110-M6KWL-00001	No	Estimating	Super duplex material	00A
Outlet to WO-MP-001B auto vent isolation	1	PV	WO			2	ball		flange	100	70	75	56		25762-110-M6KWL-00001	No	Estimating	Super duplex material	00A
Outlet to WO-MP-001B auto vent	1	PV	WO			2	AR		flange	100	70	75	56		25762-110-M6KWL-00001	No	Estimating	Super duplex material	00A
Upstream of HV009A to Makeup Water Line	1	PV	WL			6	gate		flange	100	70	50	56		25762-110-M6KWL-00001	No	Estimating	Duplex SS material	00A
On Makeup Water Line, HV009A	1	HV	WL	009	A	6	globe	Air	flange	100	70	50	56		25762-110-M6KWL-00001	No	Estimating	Duplex SS material	00A
Downstream of HV009A isolation	1	PV	WL			6	gate		flange	100	70	50	56		25762-110-M6KWL-00001	No	Estimating	Duplex SS material	00A
Upstream of HV009B to Makeup Water Line	1	PV	WL			6	gate		flange	100	70	50	56		25762-110-M6KWL-00001	No	Estimating	Duplex SS material	00A
On Makeup Water Line, HV009B	1	PV	WL	009	B	6	globe	Air	flange	100	70	50	56		25762-110-M6KWL-00001	No	Estimating	Duplex SS material	00A
Downstream of HV009B isolation	1	PV	WL			6	gate		flange	100	70	75	56		25762-110-M6KWL-00001	No	Estimating	Duplex SS material	00A
On PIT003A	1	PV	WL			1	gate			50	70	75	56		25762-110-M6KWL-00001	No	Estimating	Duplex SS material	00A
On PIT003B	1	PV	WL			1	gate		flange	50	70	75	56		25762-110-M6KWL-00001	No	Estimating	Super duplex material	00A

JUOTC STUDY - Dry Mechanical Draft CT OPTION
DCCP
Valve List

25762-110-M6X-YA-00002
Rev. 00B

Description	Unit	Comm	System	Valve Seq. No.	Suffix	Dia (in)	Valve Type	Act. Type	End Prep.	Design Press (psig)	Design Temp (°F)	Service Press (psig)	Service Temp (°F)	Rating	P&ID	Heat Trace (Yes/No)	Bid	Remarks	Rev
On PIT003C	1	PV	WL			1	gate		flange	50	70	75	56		25762-110-M6K WL-00001	No	Estimating	Duplex SS material	00A
On PIT003D	1	PV	WL			1	Gate		flange	100	70	75	56		25762-110-M6K WL-00001	No	Estimating	Duplex SS material	00A
Outlet from WL-MP-001A vent	1	PV	WL			2	globe		flange	50	70	75	56		25762-110-M6K WL-00001	No	Estimating	Duplex SS material	00A
Outlet from WL-MP-001B vent	1	PV	WL			2	globe		flange	85	70	75	56		25762-110-M6K WL-00001	No	Estimating	Duplex SS material	00A
Outlet from WL-MP-001C vent	1	PV	WL			2	globe		flange	85	70	75	56		25762-110-M6K WL-00001	No	Estimating	Duplex SS material	00A
Outlet from WL-MP-001D vent	1	PV	WL			2	globe		flange	85	70	75	56		25762-110-M6K WL-00001	No	Estimating	Duplex SS material	00A
Root connection to PI 001A	1	PV	WL			1	gate		flange	85	70	75	56		25762-110-M6K WL-00001	No	Estimating	Duplex SS material	00A
Root connection to PI 001B	1	PV	WL			1	gate		flange	85	70	75	56		25762-110-M6K WL-00001	No	Estimating	Duplex SS material	00A
Root connection to PI 001C	1	PV	WL			1	gate		flange	85	70	75	56		25762-110-M6K WL-00001	No	Estimating	Duplex SS material	00A
Root connection to PI 001D	1	PV	WL			1	gate		flange	85	70	75	56		25762-110-M6K WL-00001	No	Estimating	Duplex SS material	00A
Salt Water Cooling Pump WO-MP-001A discharge, HV 022A	2	HV	WO	022	A	24	Butterfly	Motor	flange	100	70	75	56		25762-110-M6K WL-00001	No	Valve Quote	Ductile iron, rubber lined, general service, lug type,	00A
Salt Water Cooling Pump WO-MP-001B discharge, HV 022B	2	HV	WO	022	B	24	Butterfly	Motor	flange	100	70	75	56		25762-110-M6K WL-00001	No	Valve Quote	Ductile iron, rubber lined, general service, lug type,	00A
Inlet to PI021A	2	PV	WO			1	gate		flange	100	70	75	56		25762-110-M6K WL-00001	No	Estimating	Super duplex material	00A
Outlet to WL-MP-001A auto vent isolation	2	PV	WO			2	ball		flange	100	70	75	56		25762-110-M6K WL-00001	No	Estimating	Super duplex material	00A
Outlet to WO-MP-001A auto vent	2	PV	WO			2	AR		flange	100	70	75	56		25762-110-M6K WL-00001	No	Estimating	Super duplex material	00A
Inlet to PI021B	2	PV	WO			1	gate		flange	100	70	75	56		25762-110-M6K WL-00001	No	Estimating	Super duplex material	00A

JUOTC STUDY - Dry Mechanical Draft CT OPTION
 DCP
 Valve List

25762-110-M6X-YA-00002
 Rev. 00B

Description	Unit	Comm	System	Valve Seq. No.	Suffix	Dia (in)	Valve Type	Act. Type	End Prep.	Design Press (psig)	Design Temp (°F)	Service Press (psig)	Service Temp (°F)	Rating	P&ID	Heat Trace (Yes/No)	Bid	Remarks	Rev
Outlet to WO-MP-001B auto vent isolation	2	PV	WO			2	ball		flange	100	70	75	56		25762-110-M6KWL-00001	No	Estimating	Super duplex material	00A
Outlet to WO-MP-001B auto vent	2	PV	WO			2	AR		flange	100	70	75	56		25762-110-M6KWL-00001	No	Estimating	Super duplex material	00A
Upstream of HV009A on Makeup Water Line	2	PV	WL			6	gate		flange	100	70	75	56		25762-110-M6KWL-00001	No	Estimating	Duplex SS material	00A
On Makeup Water Line, HV009A	2	HV	WL	009	A	6	globe	Air	flange	100	70	75	56		25762-110-M6KWL-00001	No	Estimating	Duplex SS material	00A
Downstream of HV009A on the Makeup Water Pump	2	HV	WL	009	B	6	gate		flange	100	70	75	56		25762-110-M6KWL-00001	No	Estimating	Duplex SS material	00A
Upstream of HV009B on Makeup Water Line	2	PV	WL			6	gate		flange	100	70	75	56		25762-110-M6KWL-00001	No	Estimating	Duplex SS material	00A
On Makeup Water Line, HV009B	2	PV	WL			6	globe	Motor	flange	100	70	75	56		25762-110-M6KWL-00001	No	Estimating	Duplex SS material	00A
Downstream of HV009B on the Makeup Water Pump	2	PV	WL			6	gate		flange	100	70	75	56		25762-110-M6KWL-00001	No	Estimating	Duplex SS material	00A
On PIT003A	2	PV	WL			1	Gate		flange	50	130	30	125		25762-110-M6KWL-00001	No	Estimating	Duplex SS material	00A
On PIT003B	2	PV	WL			1	Gate		flange	50	130	30	125		25762-110-M6KWL-00001	No	Estimating	Duplex SS material	00A
On PIT003C	2	PV	WL			1	Gate		flange	50	130	30	125		25762-110-M6KWL-00001	No	Estimating	Duplex SS material	00A
On PIT003D	2	PV	WL			1	Gate		flange	50	130	30	125		25762-110-M6KWL-00001	No	Estimating	Duplex SS material	00A
Outlet from WL-MP-001A vent	2	PV	WL			2	globe		flange	85	130	75	125		25762-110-M6KWL-00001	No	Estimating	Duplex SS material	00A
Outlet from WL-MP-001B vent	2	PV	WL			2	globe		flange	85	130	75	125		25762-110-M6KWL-00001	No	Estimating	Duplex SS material	00A
Outlet from WL-MP-001C vent	2	PV	WL			2	globe		flange	85	130	75	125		25762-110-M6KWL-00001	No	Estimating	Duplex SS material	00A
Outlet from WL-MP-001D auto vent	2	PV	WL			2	globe		flange	85	130	75	125		25762-110-M6KWL-00001	No	Estimating	Duplex SS material	00A
Root connection to Pi 001A	2	PV	WL			1	gate		flange	85	130	75	125		25762-110-M6KWL-00001	No	Estimating	Duplex SS material	00A

JUOTC STUDY - Dry Mechanical Draft CT OPTION
 DCP
 Valve List

25762-110-M6X-YA-00002
 Rev. 00B

Description	Unit	Comm	System	Valve Seq. No.	Suffix	Dia (in)	Valve Type	Act. Type	End Prep.	Design Press (psig)	Design Temp (°F)	Service Press (psig)	Service Temp (°F)	Rating	P&ID	Heat Trace (Yes/No)	Bid	Remarks	Rev
Root connection to PI 001B	2	PV	WL			1	gate		flange	85	130	75	125		25762-110-M6K WL-00001	No	Estimating	Duplex SS material	00A
Root connection to PI 001C	2	PV	WL			1	gate		flange	85	130	75	125		25762-110-M6K WL-00001	No	Estimating	Duplex SS material	00A
Root connection to PI 001D	2	PV	WL			1	gate		flange	85	130	75	125		25762-110-M6K WL-00001	No	Estimating	Duplex SS material	00A
Inlet isolation WL-MP-001A	1	HV	WL	002	A	120	Butterfly	Motor	flange	50	130	30	125		25762-110-M6K WL-00001		Valve Quote	Ductile Iron , epoxy coated or rubber lined	
Inlet isolation WL-MP-001B	1	HV	WL	002	B	120	Butterfly	Motor	flange	50	130	30	130		25762-110-M6K WL-00001		Valve Quote	Ductile Iron , epoxy coated or rubber lined	
Inlet isolation WL-MP-001C	1	HV	WL	002	C	120	Butterfly	Motor	flange	50	130	30	125		25762-110-M6K WL-00001		Valve Quote	Ductile Iron , epoxy coated or rubber lined	
Inlet isolation WL-MP-001D	1	HV	WL	002	D	120	Butterfly	Motor	flange	50	130	30	125		25762-110-M6K WL-00001		Valve Quote	Ductile Iron , epoxy coated or rubber lined	
Inlet isolation WL-MP-001A	2	HV	WL	002	A	120	Butterfly	Motor	flange	50	130	30	125		25762-110-M6K WL-00001		Valve Quote	Ductile Iron , epoxy coated or rubber lined	
Inlet isolation WL-MP-001B	2	HV	WL	002	B	120	Butterfly	Motor	flange	50	130	30	125		25762-110-M6K WL-00001		Valve Quote	Ductile Iron , epoxy coated or rubber lined	
Inlet isolation WL-MP-001C	2	HV	WL	002	C	120	Butterfly	Motor	flange	50	130	30	125		25762-110-M6K WL-00001		Valve Quote	Ductile Iron , epoxy coated or rubber lined	

JUOTC WET NATURAL DRAFT CT OPTION

DCPP

Valve List

00B	7/24/2013	Issued for Estimate Report	RP	-	RP
00A	7/11/2013	Issue for Estimate	RP	-	RP
Rev	Date	Reason for Revision	Originator	Checked	Approved

JUOTC - WET NATURAL DRAFT CT OPTION
DCPP
Valve List

25762-110-M6X-YA-00003
Rev. 00B

System Codes

Commodity Code

AD	Condensate	PV	Valve
PF	Fire Protection	HV	valve with motor or pneumatic operator used for on /off operation
PI	Plant Air		
TL	Circ. Wtr Chem Inj		
WB	Service water		
WL	Circulating Water		
WO	Sea Water		
WR	Raw Water (Grey water)		

Note:

- 1 Valves furnished with vendor packages are not included in this list. Some valves supplier by the cooling tower supplier have been included in the equipment list to help define the scope of supply by

Valve List

Qty	Line Description	Unit	Comm	System	Valve Seq. No.	Suffix	Dia (in)	Valve Type	Act. Type	End Prep.	Valve Material Class	Design Press (psig)	Design Temp (°F)	Service Press (psig)	Service Temp (°F)	Rating	P&ID	Heat Trace (Yes/No)	Bid	Remarks	Rev
18	Post indicating valve	0	PIV	PF			12	gate		flange		175	90				-		estimating	Ductile Iron	00A
54	Curb Valve	0	PV	PF			6	gate		flange		175	90				-		estimating	Ductile Iron	00A
1	Inlet Isolation WL-MP-001A	1	HV	WL	002	A	120	Butterfly	Motor	flange		50	130	30	125		25762-110-M6K-WL-00001		Valve Quote	Ductile Iron , epoxy coated or rubber lined	00A
1	Inlet Isolation WL-MP-001B	1	HV	WL	002	B	120	Butterfly	Motor	flange		50	130	30	130		25762-110-M6K-WL-00001		Valve Quote	Ductile Iron , epoxy coated or rubber lined	00A
1	Inlet Isolation WL-MP-001C	1	HV	WL	002	C	120	Butterfly	Motor	flange		50	130	30	125		25762-110-M6K-WL-00001		Valve Quote	Ductile Iron , epoxy coated or rubber lined	00A
1	Inlet Isolation WL-MP-001D	1	HV	WL	002	D	120	Butterfly	Motor	flange		50	130	30	125		25762-110-M6K-WL-00001		Valve Quote	Ductile Iron , epoxy coated or rubber lined	00A
1	Inlet Isolation WL-MP-001A	2	HV	WL	002	A	120	Butterfly	Motor	flange		50	130	30	125		25762-110-M6K-WL-00001		Valve Quote	Ductile Iron , epoxy coated or rubber lined	00A
1	Inlet Isolation WL-MP-001B	2	HV	WL	002	B	120	Butterfly	Motor	flange		50	130	30	125		25762-110-M6K-WL-00001		Valve Quote	Ductile Iron , epoxy coated or rubber lined	00A
1	Inlet Isolation WL-MP-001C	2	HV	WL	002	C	120	Butterfly	Motor	flange		50	130	30	125		25762-110-M6K-WL-00001		Valve Quote	Ductile Iron , epoxy coated or rubber lined	00A
1	Inlet Isolation WL-MP-001D	2	HV	WL	002	D	120	Butterfly	Motor	flange		50	130	30	125		25762-110-M6K-WL-00001		Valve Quote	Ductile Iron , epoxy coated or rubber lined	00A
1	Outlet Isolation WL-MP-001A	1	HV	WL	004	A	108	Butterfly	Motor	flange		85	130	75	125		25762-110-M6K-WL-00001		Valve Quote	Ductile Iron , epoxy coated or rubber lined	00A
1	Outlet Isolation WL-MP-001B	1	HV	WL	004	B	108	Butterfly	Motor	flange		85	130	75	125		25762-110-M6K-WL-00001		Valve Quote	Ductile Iron , epoxy coated or rubber lined	00A
1	Outlet Isolation WL-MP-001C	1	HV	WL	004	C	108	Butterfly	Motor	flange		85	130	75	125		25762-110-M6K-WL-00001		Valve Quote	Ductile Iron , epoxy coated or rubber lined	00A
1	Outlet Isolation WL-MP-001D	1	HV	WL	004	D	108	Butterfly	Motor	flange		85	130	75	125		25762-110-M6K-WL-00001		Valve Quote	Ductile Iron , epoxy coated or rubber lined	00A
1	Outlet Isolation WL-MP-001A	2	HV	WL	004	A	108	Butterfly	Motor	flange		85	130	75	125		25762-110-M6K-WL-00001		Valve Quote	Ductile Iron , epoxy coated or rubber lined	00A
1	Outlet Isolation WL-MP-001B	2	HV	WL	004	B	108	Butterfly	Motor	flange		85	130	75	125		25762-110-M6K-WL-00001		Valve Quote	Ductile Iron , epoxy coated or rubber lined	00A
1	Outlet Isolation WL-MP-001C	2	HV	WL	004	C	108	Butterfly	Motor	flange		85	130	75	125		25762-110-M6K-WL-00001		Valve Quote	Ductile Iron , epoxy coated or rubber lined	00A
1	Outlet Isolation WL-MP-001D	2	HV	WL	004	D	108	Butterfly	Motor	flange		85	130	75	125		25762-110-M6K-WL-00001		Valve Quote	Ductile Iron , epoxy coated or rubber lined	00A
1	Isolation Valve for the Blowdown from CT WL-ME-001A	1	PV	WL			12	Butterfly		flange		100	150	75	100		25762-110-M6K-WL-00003	No	estimating	Ductile Iron , seats EPDM amd 316 SS, 316 SS trim	00A

JUOTC STUDY - Wet Natural Draft CT OPTION
DCCP
Valve List

25761-110-M6X-YA-00003
Rev. 00B

Qty	Line Description	Unit	Comm	System	Valve Seq. No.	Suffix	Dia (in)	Valve Type	Act. Type	End Prep.	Valve Material Class	Design Press (psig)	Design Temp (°F)	Service Press (psig)	Service Temp (°F)	Rating	P&ID	Heat Trace (Yes/No)	Bid	Remarks	Rev
1	Isolation Valve for the Blowdown from CT WL-ME-001B	1	PV	WI			12	Butterfly		flange		100	150	75	100		25762-110-M6K-WL-00003	No	estimating	Ductile iron, seats EPDM amd 316 SS, 316 SS trim	00A
1	Upstream of HV017 on Blowdown Line	1	PV	WI			16	Butterfly		flange		100	150	75	100		25762-110-M6K-WL-00003	No	estimating	Ductile iron, seats EPDM amd 316 SS, 316 SS trim	00A
1	HV017 on the Blowdown Line	1	PV	WL			16	Butterfly	Motor	flange		100	150	75	100		25762-110-M6K-WL-00003	No	estimating	Ductile iron, seats EPDM amd 316 SS, 316 SS trim	00A
1	Downstream of HV017 on the Blowdown Line	1	PV	WL			16	Butterfly		flange		100	150	75	100		25762-110-M6K-WL-00003	No	estimating	Ductile iron, seats EPDM amd 316 SS, 316 SS trim	00A
1	By-pass fro HV017 on the Blowdown Line	1	PV	WL			16	Butterfly		flange		100	150	75	100		25762-110-M6K-WL-00003	No	estimating	Ductile iron, seats EPDM amd 316 SS, 316 SS trim	00A
1	Upstream of LV009 on Makeup Water Line	1	PV	WL			24	Butterfly		flange		100	150	75	100		25762-110-M6K-WL-00003	No	estimating	Ductile iron, seats EPDM amd 316 SS, 316 SS trim	00A
1	On Makeup Water Line, LV009	1	PV	WL			24	Butterfly	Motor	flange		100	150	75	100		25762-110-M6K-WL-00003	No	estimating	Ductile iron, seats EPDM amd 316 SS, 316 SS trim	00A
1	Downstream of LV009 on the Makeup Water Pump	1	PV	WL			24	Butterfly		flange		100	150	75	100		25762-110-M6K-WL-00003	No	estimating	Ductile iron, seats EPDM amd 316 SS, 316 SS trim	00A
1	By-pass to LV009 on Makeup Water Line	1	PV	WL			24	Butterfly		flange		100	150	75	100		25762-110-M6K-WL-00003	No	estimating	Ductile iron, seats EPDM amd 316 SS, 316 SS trim	00A
1	On PIT003A	1	PV	WL			1	Gate				100	150	75	100		25762-110-M6K-WL-00003	No	estimating	Duplex stainless steel	00A
1	On PIT003B	1	PV	WL			1	Gate		flange		100	150	75	100		25762-110-M6K-WL-00003	No	estimating	Duplex stainless steel	00A
1	On PIT003C	1	PV	WL			1	Gate		flange		100	150	75	100		25762-110-M6K-WL-00003	No	estimating	Duplex stainless steel	00A
1	On PIT003D	1	PV	WL			1	Gate		flange		100	150	75	100		25762-110-M6K-WL-00003	No	estimating	Duplex stainless steel	00A
1	Outlet from WL-MP-001A auto vent	1	PV	WL			2	ball	Motor	flange		100	150	75	100		25762-110-M6K-WL-00003	No	estimating	Duplex stainless steel	00A
1	Outlet from WL-MP-001A auto vent	1	PV	WL			2	AR		flange		100	150	75	100		25762-110-M6K-WL-00003	No	estimating	Duplex stainless steel	00A
1	Outlet from WL-MP-001B auto vent	1	PV	WL			2	ball	Motor	flange		100	150	75	100		25762-110-M6K-WL-00003	No	estimating	Duplex stainless steel	00A
1	Outlet from WL-MP-001B auto vent	1	PV	WL			2	AR		flange		100	150	75	100		25762-110-M6K-WL-00003	No	estimating	Duplex stainless steel	00A
1	Outlet from WL-MP-001C auto vent	1	PV	WL			2	ball	Motor	flange		100	150	75	100		25762-110-M6K-WL-00003	No	estimating	Duplex stainless steel	00A
1	Outlet from WL-MP-001C auto vent	1	PV	WL			2	AR		flange		100	150	75	100		25762-110-M6K-WL-00003	No	estimating	Duplex stainless steel	00A

JUOTC STUDY - Wet Natural Draft CT OPTION
DCCP
Valve List

25761-110-M6X-YA-00003
Rev. 00B

Qty	Line Description	Unit	Comm	System	Valve Seq. No.	Suffix	Dia (In)	Valve Type	Act. Type	End Prep.	Valve Material Class	Design Press (psig)	Design Temp (°F)	Service Press (psig)	Service Temp (°F)	Rating	P&ID	Heat Trace (Yes/No)	Bid	Remarks	Rev
1	Outlet from WL-MP-001D auto vent	1	PV	WL			2	ball	Motor	flange		100	150	75	100		25762-110-M6K-WL-00003	No	estimating	Duplex stainless steel	00A
1	Outlet from WL-MP-001D auto vent	1	PV	WL			2	AR		flange		100	150	75	100		25762-110-M6K-WL-00003	No	estimating	Duplex stainless steel	00A
1	Root connection to PI 001A	1	PV	WL			1	gate		flange		100	150	75	100		25762-110-M6K-WL-00003	No	estimating	Duplex stainless steel	00A
1	Root connection to PI 001B	1	PV	WL			1	gate		flange		100	150	75	100		25762-110-M6K-WL-00003	No	estimating	Duplex stainless steel	00A
1	Root connection to PI 001C	1	PV	WL			1	gate		flange		100	150	75	100		25762-110-M6K-WL-00003	No	estimating	Duplex stainless steel	00A
1	Root connection to PI 001D	1	PV	WL			1	gate		flange		100	150	75	100		25762-110-M6K-WL-00003	No	estimating	Duplex stainless steel	00A
1	Isolation Valve for the Blowdown from CT WL-ME-001A	2	PV	WL			12	Butterfly		flange		100	150	75	100		25762-110-M6K-WL-00003	No	estimating	Ductile iron, seats EPDM amd 316 SS, 316 SS trim	00A
1	Isolation Valve for the Blowdown from CT WL-ME-001B	2	PV	WI			12	Butterfly		flange		100	150	75	100		25762-110-M6K-WL-00003	No	estimating	Ductile iron, seats EPDM amd 316 SS, 316 SS trim	00A
1	Upstream of HV017 on Blowdown Line	2	PV	WI			16	Butterfly		flange		100	150	75	100		25762-110-M6K-WL-00003	No	estimating	Ductile iron, seats EPDM amd 316 SS, 316 SS trim	00A
1	HV017 on the Blowdown Line	2	PV	WL			16	Butterfly	Motor	flange		100	150	75	100		25762-110-M6K-WL-00003	No	estimating	Ductile iron, seats EPDM amd 316 SS, 316 SS trim	00A
1	Downstream of HV017 on the Blowdown Line	2	PV	WL			16	Butterfly		flange		100	150	75	100		25762-110-M6K-WL-00003	No	estimating	Ductile iron, seats EPDM amd 316 SS, 316 SS trim	00A
1	By-pass fro HV017 on the Blowdown Line	2	PV	WL			16	Butterfly		flange		100	150	75	100		25762-110-M6K-WL-00003	No	estimating	Ductile iron, seats EPDM amd 316 SS, 316 SS trim	00A
1	Upstream of LV009 on Makeup Water Line	2	PV	WL			24	Butterfly		flange		100	150	75	100		25762-110-M6K-WL-00003	No	estimating	Ductile iron, seats EPDM amd 316 SS, 316 SS trim	00A
1	On Makeup Water Line, LV009	2	PV	WL			24	Butterfly	Motor	flange		100	150	75	100		25762-110-M6K-WL-00003	No	estimating	Ductile iron, seats EPDM amd 316 SS, 316 SS trim	00A
1	Downstream of LV009 on the Makeup Water Pump	2	PV	WL			24	Butterfly		flange		100	150	75	100		25762-110-M6K-WL-00003	No	estimating	Ductile iron, seats EPDM amd 316 SS, 316 SS trim	00A
1	By-pass to LV009 on Makeup Water Line	2	PV	WL			24	Butterfly		flange		100	150	75	100		25762-110-M6K-WL-00003	No	estimating	Ductile iron, seats EPDM amd 316 SS, 316 SS trim	00A
1	On PIT003A	2	PV	WL			1	Gate		flange		100	150	75	100		25762-110-M6K-WL-00003	No	estimating	Duplex stainless steel	00A
1	On PIT003B	2	PV	WL			1	Gate		flange		100	150	75	100		25762-110-M6K-WL-00003	No	estimating	Duplex stainless steel	00A

Valve List

Qty	Line Description	Unit	Comm	System	Valve Seq. No.	Suffix	Dia (in)	Valve Type	Act. Type	End Prep.	Valve Material Class	Design Press (psig)	Design Temp (°F)	Service Press (psig)	Service Temp (°F)	Rating	P&ID	Heat Trace (Yes/No)	Bid	Remarks	Rev
1	On PIT003C	2	PV	WL			1	Gate		flange		100	150	75	100		25762-110-M6K-WL-00003	No	estimating	Duplex stainless steel	00A
1	On PIT003D	2	PV	WL			1	Gate		flange		100	150	75	100		25762-110-M6K-WL-00003	No	estimating	Duplex stainless steel	00A
1	Outlet from WL-MP-001A auto vent	2	PV	WL			2	ball	Motor	flange		100	150	75	100		25762-110-M6K-WL-00003	No	estimating	Duplex stainless steel	00A
1	Outlet from WL-MP-001A auto vent	2	PV	WL			2	AR		flange		100	150	75	100		25762-110-M6K-WL-00003	No	estimating	Duplex stainless steel	00A
1	Outlet from WL-MP-001B auto vent	2	PV	WL			2	ball	Motor	flange		100	150	75	100		25762-110-M6K-WL-00003	No	estimating	Duplex stainless steel	00A
1	Outlet from WL-MP-001B auto vent	2	PV	WL			2	AR		flange		100	150	75	100		25762-110-M6K-WL-00003	No	estimating	Duplex stainless steel	00A
1	Outlet from WL-MP-001C auto vent	2	PV	WL			2	ball	Motor	flange		100	150	75	100		25762-110-M6K-WL-00003	No	estimating	Duplex stainless steel	00A
1	Outlet from WL-MP-001C auto vent	2	PV	WL			2	AR		flange		100	150	75	100		25762-110-M6K-WL-00003	No	estimating	Duplex stainless steel	00A
1	Outlet from WL-MP-001D auto vent	2	PV	WL			2	ball	Motor	flange		100	150	75	100		25762-110-M6K-WL-00003	No	estimating	Duplex stainless steel	00A
1	Outlet from WL-MP-001D auto vent	2	PV	WL			2	AR		flange		100	150	75	100		25762-110-M6K-WL-00003	No	estimating	Duplex stainless steel	00A
1	Root connection to PI 001A	2	PV	WL			1	gate		flange		100	150	75	100		25762-110-M6K-WL-00003	No	estimating	Duplex stainless steel	00A
1	Root connection to PI 001B	2	PV	WL			1	gate		flange		100	150	75	100		25762-110-M6K-WL-00003	No	estimating	Duplex stainless steel	00A
1	Root connection to PI 001C	2	PV	WL			1	gate		flange		100	150	75	100		25762-110-M6K-WL-00003	No	estimating	Duplex stainless steel	00A
1	Root connection to PI 001D	2	PV	WL			1	gate		flange		100	150	75	100		25762-110-M6K-WL-00003	No	estimating	Duplex stainless steel	00A
3	Pump MP001A, B, & C Isolation valves	0	HV	WO	032		42	Butterfly	Motor	flange		320	70				25762-110-M6K-WO-00001		Valve Quote	Ductile iron, rubber lined, general service, lug type,	00A
1	FE043 outlet isolation valve	0	HV	WO			42	butterfly	Motor	flange		320	70				25762-110-M6K-WO-00001		Valve Quote	Ductile iron, rubber lined, general service, lug type,	00A
1	Desal brine outlet control valve	0	HV	WO			42	butterfly	Motor	flange		320	70				25762-110-M6K-WO-00001		Valve Quote	Ductile iron, rubber lined, general service, lug type,	00A
2	Pump MP002A&B outlet valve	0	HV	WO			6	butterfly	motor	flange		320	70				25762-110-M6K-WO-00001		estimating	Ductile iron, rubber lined, general service, lug type,	00A
2	Pump MP002A&B outlet valve	0	HV	WO			8	butterfly	motor	flange		320	70				25762-110-M6K-WO-00001		estimating	Ductile iron, rubber lined, general service, lug type,	00B
3	Pump MP001A, B, & C air release valve	0	PY	WO			2	AR		flange		320	70				25762-110-M6K-WO-00001		estimating	Super duplex ss	00A
3	Pump MP001A, B, & C air release valve isolation valves	0	PY	WO			2	ball		flange		320	70				25762-110-M6K-WO-00001		estimating	Super duplex ss	00A
3	PI 031 isolation valve	0	PY	WO			1	ball		flange		320	70				25762-110-M6K-WO-00001		estimating	Super duplex ss	00A

JUOTC STUDY - Wet Natural Draft CT OPTION
DCPP
Valve List

25761-110-M6X-YA-00003
Rev. 00B

Qty	Line Description	Unit	Comm	System	Valve Seq. No.	Suffix	Dia (in)	Valve Type	Act. Type	End Prep.	Valve Material Class	Design Press (psig)	Design Temp (°F)	Service Press (psig)	Service Temp (°F)	Rating	P&ID	Heat Trace (Yes/No)	Bid	Remarks	Rev
1	Pump MP001A, B, & C recirc isolation valve	0	PY	WO			30	butterfly		flange		320	70				25762-110-M6K-W0-00001		estimating	Ductile iron, rubber lined, general service, lug type,	00A
2	FT034 root valves	0	PY	WO			1	ball		flange		320	70				25762-110-M6K-W0-00001		estimating	Super duplex ss	00A
1	PT033 isolation valve	0	PY	WO			1	ball		flange		320	70				25762-110-M6K-W0-00001		estimating	Super duplex ss	00A
1	Desal outlet isolation valve	0	PY	WO			42	butterfly		flange		320	70				25762-110-M6K-W0-00001		Valve Quote	Ductile iron, rubber lined, general service, lug type,	00A
1	FT043 Inlet isolation valve	0	PY	WO			42	butterfly		flange		320	70				25762-110-M6K-W0-00001		Valve Quote	Ductile iron, rubber lined, general service, lug type,	00A
2	FT043 root valves	0	PY	WO			1	ball		flange		320	70				25762-110-M6K-W0-00001		estimating		00A
1	FE043 outlet isolation valve	0	HV	WO			42	butterfly	Motor	flange		320	70				25762-110-M6K-W0-00001		Valve Quote	Ductile iron, rubber lined, general service, lug type,	00B
1	Desal brine outlet isolation valve	0	PY	WO			42	butterfly		flange		320	70				25762-110-M6K-W0-00001		Valve Quote	Ductile iron, rubber lined, general service, lug type,	00A
1	Brine outlet PI root valve	0	PY	WO			1	gate		flange		320	70				25762-110-M6K-W0-00001		estimating	Super duplex ss	00A
2	Pump MP002A&B outlet valve	0	HV	WO			8	butterfly	motor	flange		320	70				25762-110-M6K-W0-00001		estimating	Ductile iron, rubber lined, general service, lug type,	00B
2	Pump MP002A&B outlet check valve	0	PY	WO			8	wafer check		flange		320	70				25762-110-M6K-W0-00001		estimating	Ductile iron, rubber lined, general service, lug type,	00A
2	Pump MP002A&B outlet air release valve	0	PY	WO			1	AR		flange		320	70				25762-110-M6K-W0-00001		estimating	Super duplex ss	00A
2	Pump MP002A&B outlet air release isolation valve	0	PY	WO			1	ball		flange		320	70				25762-110-M6K-W0-00001		estimating	Super duplex ss	00A
2	Pump MP002A&B PI isolation valve	0	PY	WO			1	ball		flange		320	70				25762-110-M6K-W0-00001		estimating	Super duplex ss	00A
2	SL Grey Water Supply pump 4A & 4B check valves	0	PV	WR			6	wafer check		flanged		325	90				25762-110-M6K-WR-00003		estimating	Ductile Iron	00A
2	SL Grey Water Supply pump 5A & 5B check valves	0	PV	WR			6	wafer check		flanged		325	90				25762-110-M6K-WR-00003		estimating	Ductile Iron	00A
2	SL Grey Water Supply pump 4A & 4B discharge valves	0	PV	WR			6	butterfly				325	90				25762-110-M6K-WR-00003		estimating	Ductile iron, seats EPDM amd 316 SS, 316 SS trim	00A
2	SL Grey Water Supply pump 4A & 4B air release valve	0	PV	WR			2	AR				325	90				25762-110-M6K-WR-00003		estimating	Ductile Iron	00A

Qty	Line Description	Unit	Comm	System	Valve Seq. No.	Suffix	Dia (in)	Valve Type	Act. Type	End Prep.	Valve Material Class	Design Press (psig)	Design Temp (°F)	Service Press (psig)	Service Temp (°F)	Rating	P&ID	Heat Trace (Yes/No)	Bid	Remarks	Rev
2	SL Grey Water Supply pump 5A & 5B air release valve	0	PV	WR			2	AR				325	90				25762-110-M6K-WR-00003		estimating	Ductile Iron	00A
2	SL Grey Water Supply pump 4A & 4B air release isolation valve	0	PV	WR			2	ball				325	90				25762-110-M6K-WR-00003		estimating	Ductile Iron	00A
2	SL Grey Water Supply pump 5A & 5B air release isolation valve	0	PV	WR			2	ball				325	90				25762-110-M6K-WR-00003		estimating	Ductile iron	00A
2	SL Grey Water Supply pump 4A & 4B PI isolation valve	0	PV	WR			1	ball				325	90				25762-110-M6K-WR-00003		estimating	Ductile Iron	00A
2	SL Grey Water Supply pump 5A & 5B PI isolation valve	0	PV	WR			1	ball				325	90				25762-110-M6K-WR-00003		estimating	Ductile Iron	00A
1	SL Grey Water Supply pump 4A & 4B recirc valve isolation valve	0	PV	WR			6	butterfly				325	90				25762-110-M6K-WR-00003		estimating	Ductile iron, seats EPDM amd 316 SS, 316 SS trim	00A
1	SL Grey Water Supply pump 5A & 5B recirc valve isolation valve	0	PV	WR			6	butterfly				325	90				25762-110-M6K-WR-00003		estimating	Ductile iron, seats EPDM amd 316 SS, 316 SS trim	00A
26	Supply line auto vent valves	0	PV	WR			2	gate				325	90				25762-110-M6K-WR-00003		estimating	duplex ss Assumes approximately 1 per mile	00A
26	supply line auto vent valve isolation valves	0	PV	WR			2	AR				325	90				25762-110-M6K-WR-00003		estimating	Ductile Iron	00A
26	supply line drain valves	0	PV	WR			3	gate				325	90				25762-110-M6K-WR-00003		estimating	Ductile Iron	00A
1	flow element isolation valve	0	PV	WR			12	butterfly				325	90				25762-110-M6K-WR-00003		estimating	Ductile iron, seats EPDM amd 316 SS, 316 SS trim	00A
1	tank isolation valve	0	PV	WR			12	butterfly				325	90				25762-110-M6K-WR-00003		estimating	Ductile Iron, seats EPDM amd 316 SS, 316 SS trim	00A
1	tank outlet valve	0	PV	WR			16	butterfly				325	90				25762-110-M6K-WR-00003		estimating	Ductile iron, seats EPDM amd 316 SS, 316 SS trim	00A
2	Pump MP 002A & B inlet valves	0	PV	WR			16	butterfly				65	90				25762-110-M6K-WR-00003		estimating	Ductile Iron, seats EPDM amd 316 SS, 316 SS trim	00A
2	Pump MP002A & 2B check valve	0	PV	WR			12	water check				65	90				25762-110-M6K-WR-00003		estimating	Ductile iron, seats EPDM amd 316 SS, 316 SS trim	00A
2	Pump MP002A & 2B isolation valve	0	PV	WR			12	butterfly				65	90				25762-110-M6K-WR-00003		estimating	Ductile Iron, seats EPDM amd 316 SS, 316 SS trim	00A

JUOTC STUDY - Wet Natural Draft CT OPTION
DCPP
Valve List

25761-110-M6X-YA-00003
Rev. 00B

Qty	Line Description	Unit	Comm	System	Valve Seq. No.	Suffix	Dia (In)	Valve Type	Act. Type	End Prep.	Valve Material Class	Design Press (psig)	Design Temp (°F)	Service Press (psig)	Service Temp (°F)	Rating	P&ID	Heat Trace (Yes/No)	Bld	Remarks	Rev
2	Pump MP002A & 2B PI isolation valve	0	PV	WR			1	gate				65	90				25762-110-M6K-WR-00003		estimating	Ductile Iron	00A
2	Pump MP003A & B check valves	0	PV	WR			8	wafer check				65	90				25762-110-M6K-WR-00003		estimating	Ductile Iron	00A
2	Pump MP003A & B isolation valves	0	PV	WR			8	butterfly				65	90				25762-110-M6K-WR-00003		estimating	Ductile iron, seats EPDM amd 316 SS, 316 SS trim	00A
2	Pump MP 001 & B inlet valves	0	PV	WR				butterfly				65	90				25762-110-M6K-WR-00003		estimating	Ductile iron, seats EPDM amd 316 SS, 316 SS trim	00A
2	Pump MP001A & 1B check valve	0	PV	WR				wafer check				65	90				25762-110-M6K-WR-00003		estimating	Ductile Iron	00A
2	Pump MP001A & 1B isolation valve	0	PV	WR				butterfly				65	90				25762-110-M6K-WR-00003		estimating	Ductile Iron	00A
2	Pump MP001A & 1B PI isolation valve	0	PV	WR			1	gate				30	90				25762-110-M6K-WR-00003		estimating	Ductile Iron	00A
1	storage pond outlet valve	0	PV	WR			36	butterfly				30	90				25762-110-M6K-WR-00003		estimating	Ductile iron, seats EPDM amd 316 SS, 316 SS trim	00B