

Total Maximum Daily Load Progress Report		Los Angeles River Trash TMDL
Regional Water Board	Los Angeles, Region 4	STATUS <input checked="" type="checkbox"/> Conditions Improving <input type="checkbox"/> Data Inconclusive <input type="checkbox"/> Improvement Needed <input type="checkbox"/> TMDL Achieved/Waterbody Delisted
Beneficial uses affected	REC-1, REC-2, WARM, WILD, EST, MAR, RARE, MIGR, SPWN, COMM, SHELL, WET, COLD	
Pollutant(s) addressed:	Trash	
Implemented through:	NDPES Permits, MS4 Permits, Statewide Storm Water Permits	
Approval date:	August 2007	

TMDL Summary:

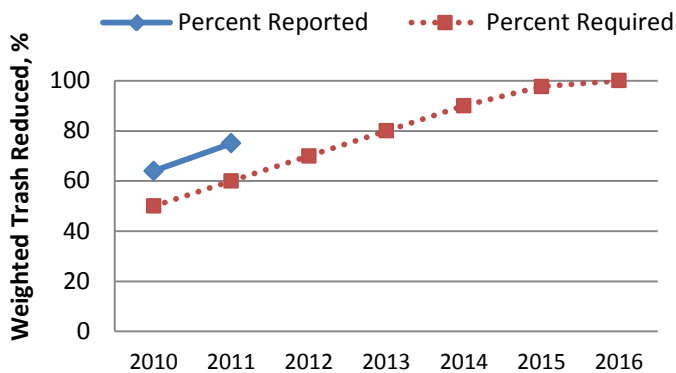
The goal of the [Los Angeles River Trash TMDL](#) is to eliminate the significant water quality problems caused by trash. Trash in rivers, streams and other waterways impairs the attainment of beneficial uses, particularly recreational and wildlife uses. Storm drains are a major source of trash in the Los Angeles River. The strategy for meeting the water quality objective in this TMDL focuses on reducing the trash discharged from municipal storm drains. The TMDL addresses trash impairments in the Los Angeles River by assigning waste load allocations to Caltrans and 42 cities in the watershed. The phased implementation schedule calls for 0% of the baseline load (100% reduction) to be met on September 30, 2016. The Los Angeles River Trash TMDL was originally adopted by the Regional Board on September 19, 2001 and approved by USEPA on August 1, 2002. However, due to litigation, this TMDL was set aside on June 8, 2006 and readopted by the Regional Board on August 9, 2007. The implementation schedule remains the same.

The Los Angeles River Watershed



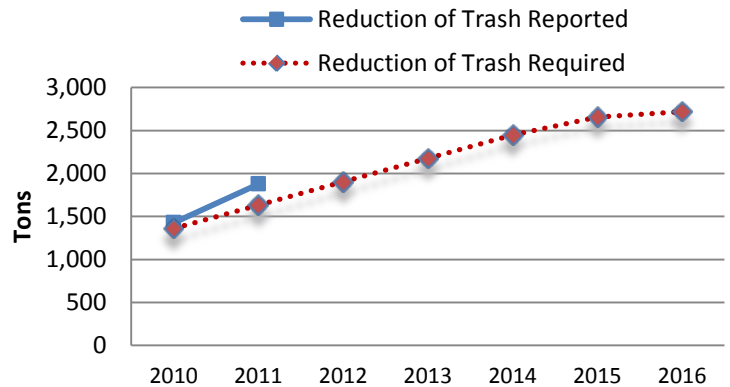
TMDL Waste Load Allocations/Load Allocations

Status of Trash Reduction LA River Trash TMDL



Source: 42 Cities' Annual Reports, 2010-2011 pursuant to Part 7.1 LA County MS4 Permit (Order # 01-182)

Reduction of Trash in Los Angeles River



Source: 42 Cities' Annual Reports, 2010-2011 pursuant to Part 7.1 LA County MS4 Permit (Order # 01-182)

Water Quality Outcomes

- The weighted average trash reduction of the 42 cities in the LA River Trash TMDL in 2010 and 2011 was 64% and 75% (from the baseline), which was beyond the required percent reduction of 50% and 60%, respectively.
- The 2012 target of 70% trash reduction from the baseline was already met in 2011. The next compliance point is an 80% reduction in 2013.
- The installation of trash capture devices by 42 cities in the LA River Trash TMDL has prevented more than 3,300 tons of trash from entering the Los Angeles River in 2010 and 2011.
- Of the 42 cities, 26% have installed full capture devices (FCDs), 29% are awaiting the installation of FCDs, 19% are planning to install FCDs, and 21% have implemented partial capture and institutional controls.