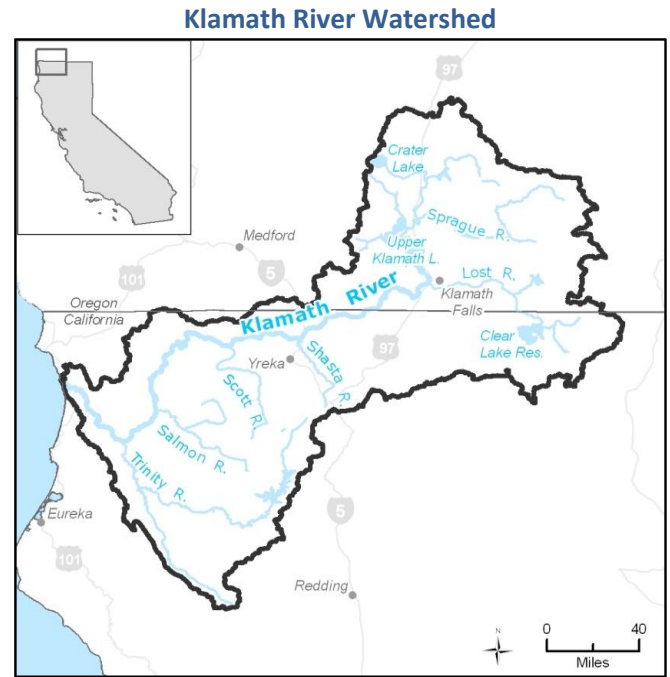


Total Maximum Daily Load Progress Report		Klamath River Nutrient, DO, and microcystin TMDLs
Regional Water Board	North Coast, Region 1	<b>STATUS</b> <input type="checkbox"/> Conditions Improving <input checked="" type="checkbox"/> <b>Data Inconclusive</b> <input type="checkbox"/> Improvement Needed <input type="checkbox"/> TMDL Achieved/Waterbody Delisted
<b>Beneficial uses affected</b>	COLD, CUL, REC-1 and 2, others	
<b>Pollutants addressed:</b>	Nutrients, DO, micrcystin	
<b>Implemented through:</b>	MAA, NPS permits, KHSA	
<b>Approval date:</b>	December 2010	

**TMDL summary:** [The Klamath River TMDLs](#) were developed and are being implemented through memorandums of agreements (MOAs) with Oregon Department of Environmental Quality and EPA Regions 9 and 10. This comprehensive basin-wide approach addresses nutrient related impairments common to areas in both Oregon and California. The primary sources of nutrient and organic matter loading are in Oregon, and results from the conversion of wetlands and marshes to agriculture and from Upper Klamath Lake (UKL). Nutrient loads from UKL are generated from sediments derived from legacy land uses; these internally generated nutrient loads drive massive algal blooms which then pass downstream creating poor water quality conditions. Therefore the focus of implementation actions is to reduce nutrient and organic matter in Oregon through large-scale projects such as strategically placed treatment wetlands, sediment sequestration of nutrients (UKL), and organic matter removal. The Klamath River TMDLs are using the Klamath Tracking and Accounting program to track progress basinwide and to promote the sale of pollutant reduction credits.



### Coordinated Implementation Actions Underway

- Klamath Basin Monitoring Program: Voluntary basinwide coordinated monitoring with common quality assurance, protocols, and data management. Currently over 50 member organizations.
- Klamath Tracking and Accounting Program: Independent project registry and certification with option for sale of pollutant reduction credits.
- Klamath Hydroelectric Settlement Agreement Interim Measure 10 Water Quality Workshop: Thirty percent design planning document for large-scale pollutant reduction projects for upper Klamath Basin.
- Klamath Hydroelectric Settlement Agreement Interim Measure 11 Water Quality Pilot Projects: Development of innovative water quality improvement projects (e.g., treatment wetlands).
- Develop North Coast Regional Water Quality Control Board Agriculture Discharge Permitting Program.
- Coordinate Klamath Health Fish Assessment Team activities.
- Implement forest land (Federal and private) permit programs
- Implement County Roads waiver program.

### Klamath River Nutrient Loading and Allocations at CA / OR Stateline

