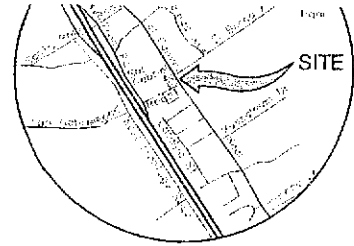
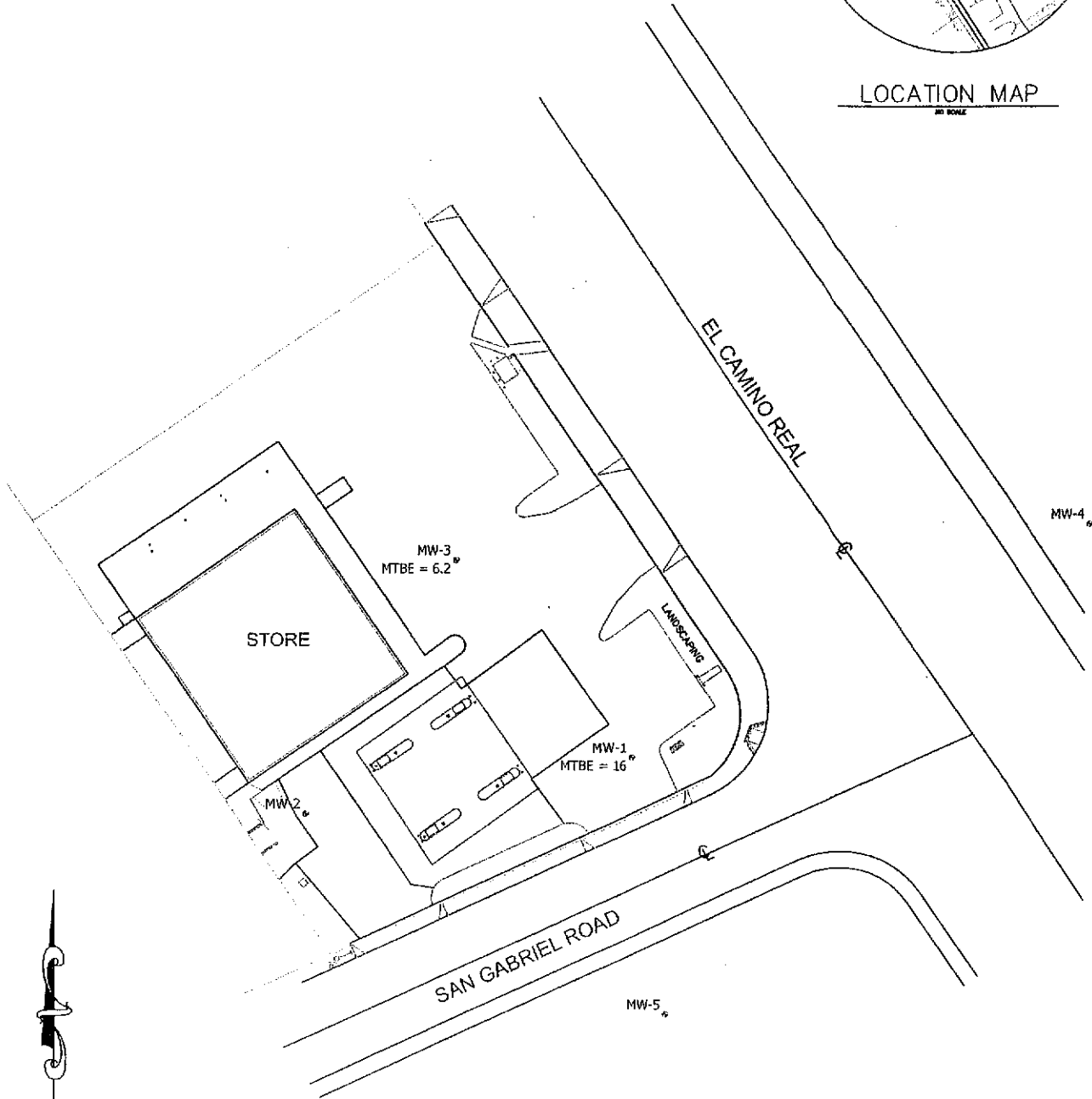


Item No. 10 Attachment No. 1
 October 21, 2005 Meeting
 Low Threat and General
 Discharge Cases



LOCATION MAP



NOTE: Highest contaminant concentrations show for each location. Laboratory results of ND are not shown.



HerSchy Environmental, Inc.
 Environmental Consulting and Remediation

P. O. Box 229
 Bass Lake, California 93604-0229
 Tel. (559) 641-7320, Fax (559) 641-7340

COCs IN GROUNDWATER
 AT END OF INVESTIGATION
 CHALK MOUNTAIN LIQUOR

9990 El Camino Real, Atascadero, California

DATE:
 August, 2005
 FILE NO.:
 A08-21
 DRAWN BY:
 JSO

FIGURE
 5