

Status Report City of Salinas Municipal Storm Water Discharges

Central Coast Regional Water Quality Control Board Meeting



Response to EPA Deficiencies



- Illicit Discharge Detection and Elimination
 - ▣ Training, Systems, Reviews and Technology
- Commercial/Industrial Facilities
 - ▣ Backup Plans, Oversight Review, MOU, Data Gathering
- Construction Site Management
 - ▣ Training, New Hires, Data Collection Overhaul, Clarification of Priorities and Responsibilities

Supporting Action



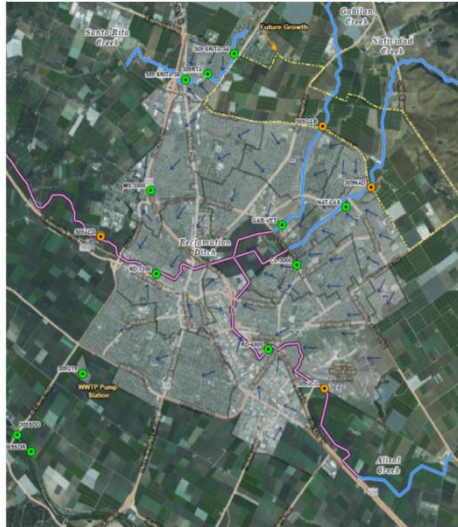
- Reorganization of Public Works Department
 - ▣ Created Water, Waste and Energy Division
 - ▣ Pending reorganization of Inspection Services
 - ▣ Community Development Engineering Services consolidated into Public Works
 - ▣ Current half time Storm Water Program Manager full time in July
 - ▣ Employee Replacement

Funding



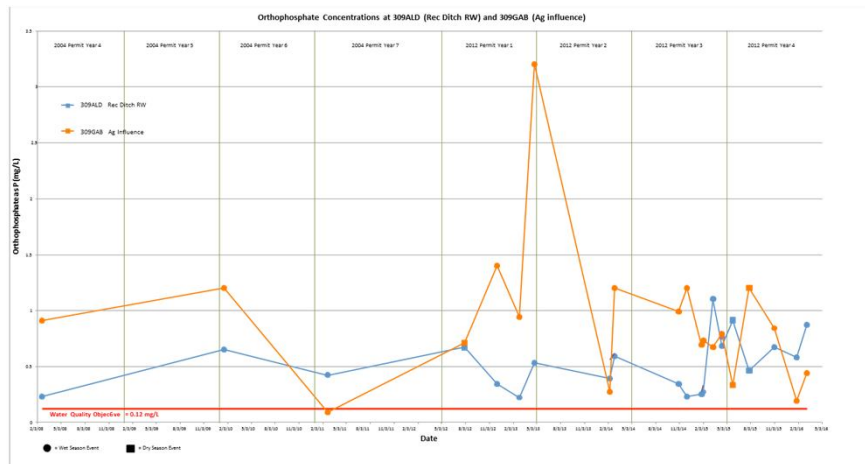
- Total Operations and Program FY 2015/16
 - ▣ \$1.8 mil
- Total Operations and Program FY 2016/17
 - ▣ \$2.25 mil
- Equipment
 - ▣ 2 Street Sweepers \$1.2 mil (long term lease)
- Technology
 - ▣ \$225,000 new positions, software and equip
 - ▣ GIS – Field Apps-Tablets and Portables

Monitoring Program Challenges

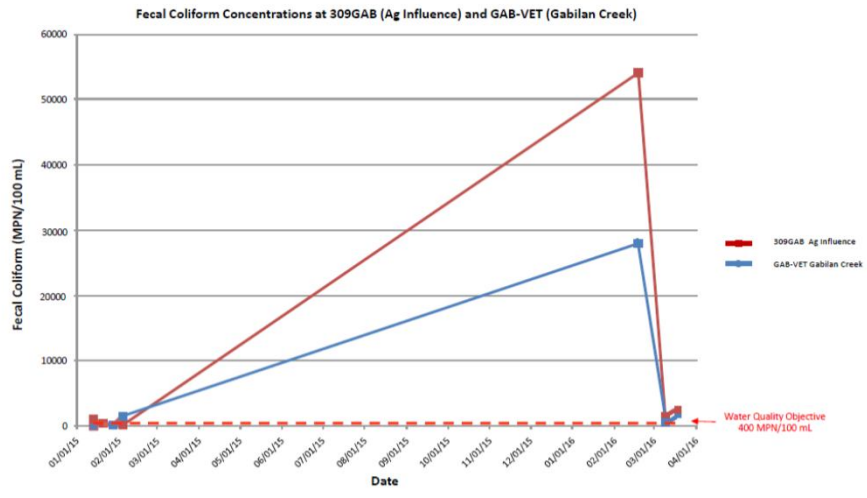


- Current structure inadequate to determine pollutant contribution by Salinas
- Data reported is public information subject to mis-interpretation
- Redundant data collection: Ag Cooperative, CClean
- Monitoring program costs \$120,000+ /year
- Regional Board staff open to new monitoring program design

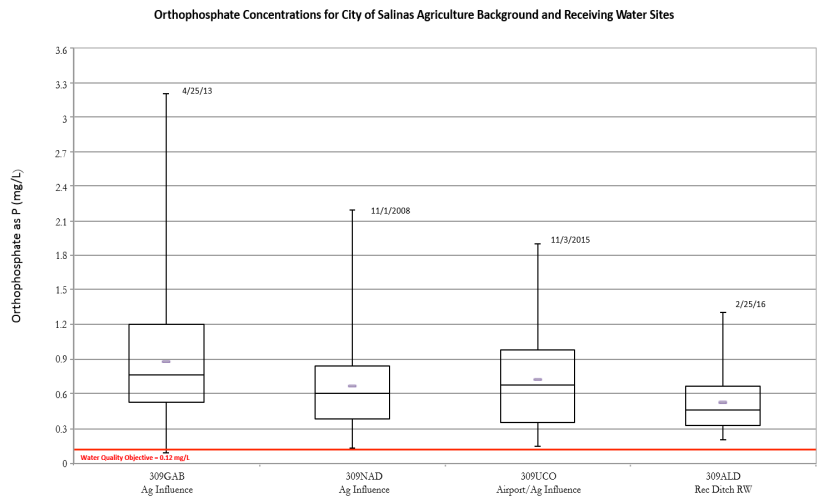
Orthophosphate



Fecal Coliform



Orthophosphate – Perimeter Sites



Sucesses



- Trash Load – 77 Tons (\$175,00 Measure G)
- GIS and Data Collection
 - ▣ Street Sweeping and Route Smart
- Retrofit Projects
 - ▣ El Dorado Park (\$500,000 Measure G)
 - ▣ Airport Drive/Alisal Roundabout (\$1.5 mil various)
 - ▣ Waste Water Shunt (\$800,000 Industrial Waste Water Fund)

Going Forward



- New Permit
- FY 2016/17 Desiltation of Natividad & Gabilan Creeks (\$500,000)
- Pure Water Monterey Project
- Ground Water Sustainability
- Carr Lake