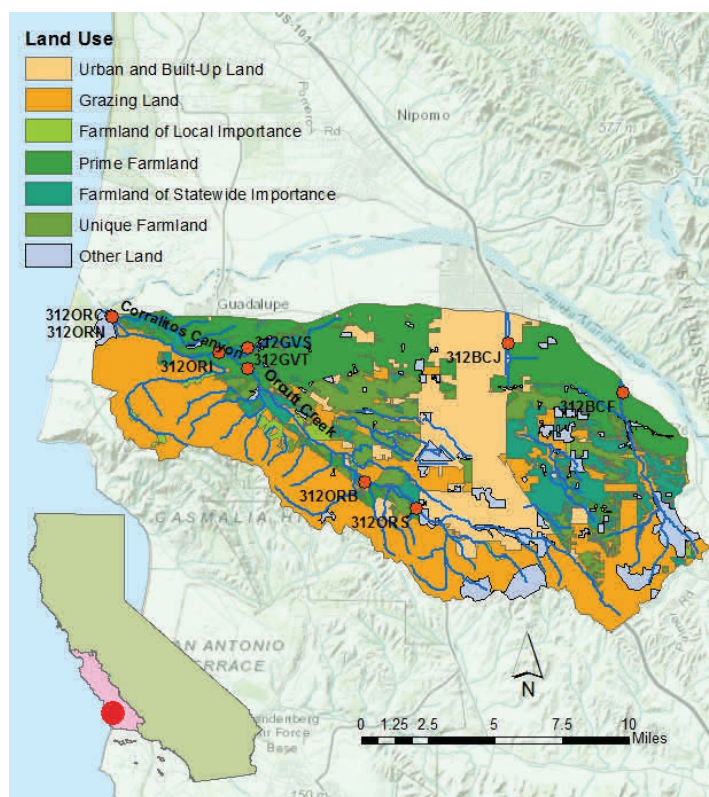


Water Quality Report Card		Nitrate in Orcutt Creek	
Regional Water Board:	Central Coast, Region 3	STATUS	<input type="checkbox"/> Conditions Improving
Beneficial Uses Affected:	MUN		<input type="checkbox"/> Data Inconclusive
Implemented Through:	Conditional Waiver of WDR		<input checked="" type="checkbox"/> Improvement Needed
Effective Date:	May 2014		<input type="checkbox"/> Targets Achieved/Waterbody Delisted
Attainment Date:	2044	Pollutant Type:	<input type="checkbox"/> Point Source <input checked="" type="checkbox"/> Nonpoint Source <input checked="" type="checkbox"/> Legacy

Water Quality Improvement Strategy

Orcutt Creek is a sub-watershed within the Santa Maria River Watershed. The 23,678 acre watershed is located in Santa Barbara County. Water quality impairments in Orcutt Creek include exceedances of water quality objectives for nitrate. Nitrate (nitrate as N) levels exceed Basin Plan water quality objectives for the protection of the municipal water supply (MUN) and aquatic life beneficial uses. The [Santa Maria Watershed Nutrients TMDL](#) identifies croplands as the primary source of nitrate in the Orcutt Creek Watershed. The TMDL establishes a numeric target that is equal to the existing Basin Plan water quality objective of 10 mg/L for nitrate as N to protect the MUN beneficial use. There are also seasonal targets of 4.3 mg/L (nitrate as N) for the dry season (May 1 - October 31) and 8.0 mg/L (nitrate-N) for the wet season (November 1 - April 30) to protect aquatic life beneficial uses. The TMDL is implemented through the Central Coast Regional Water Board's [2012 Conditional Waiver of Waste Discharge Requirements for Discharges from Irrigated Lands in the Central Coast Region](#) (Ag Order), and accompanying Monitoring and Reporting Program^a. The TMDL implementation schedule calls for achieving numeric targets by October 2044.

Orcutt Creek Watershed



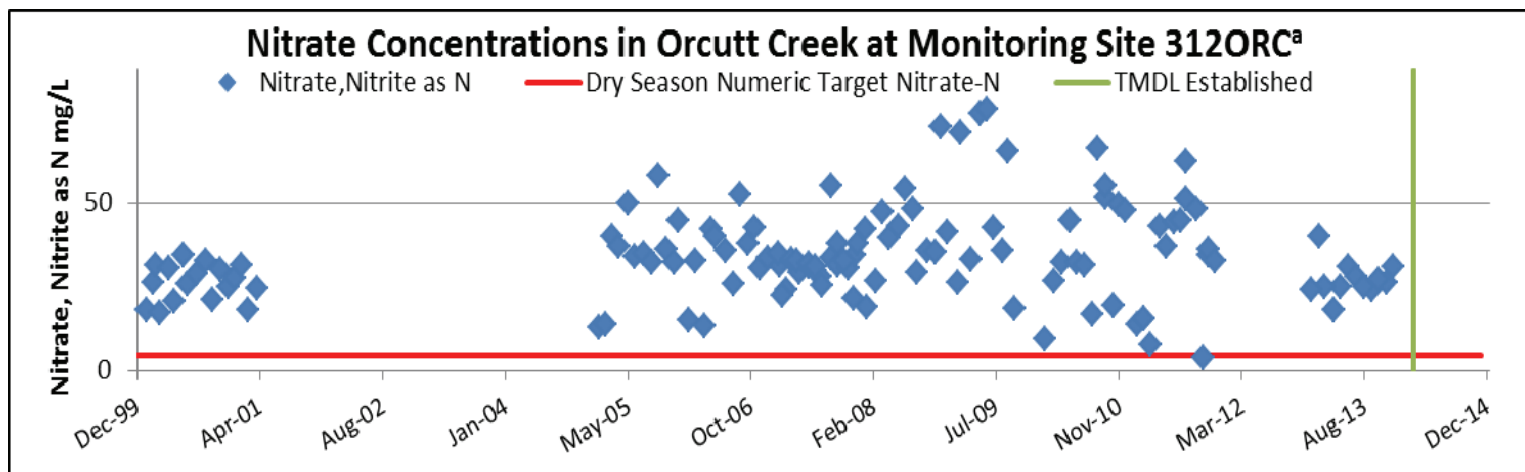
TMDL Load Allocations and Numeric Targets^b

Site ID	Est. Existing Mean Annual Load (lbs.)	Mean Annual Loading Capacity (lbs.)	% Reduction Goal	NO ₃ -N Numeric Target Used for Loading Capacity (mg/L)
312ORC	497,833	65,357	87%	Dry Season Biostim (4.3)
312ORC	503,228	113,403	77%	Wet Season Biostim (8.0)

^bTable information summarized from Tables 6.2 and 6.3 in the [Santa Maria Watershed Nutrients TMDL](#) document.

Water Quality Outcomes

- No new data is available to confirm a change in nitrate levels in Orcutt Creek.
- Early implementation of the TMDL occurred during the 2012 Ag Order adoption process.
- The Central Coast Regional Water Board will continue the 2012 Ag Order implementation and to monitor efforts to track progress in attaining nitrate water quality objectives in the watershed.



^aSee [Central Coast Ambient Monitoring Program \(CCAMP\)](#) website for additional water quality monitoring data.