



Central Valley Regional Water Quality Control Board

14 January 2026

Skyler Lipski
City of Chico Public Works Department
411 Main Street
Chico, CA 95928

**NOTICE OF APPLICABILITY: STATE WATER RESOURCES CONTROL BOARD
CLEAN WATER ACT SECTION 401 GENERAL WATER QUALITY CERTIFICATION
FOR REGIONAL GENERAL PERMIT 8 (ORDER WQ 2023-0061-DWQ), CITY OF
CHICO PUBLIC WORKS DEPARTMENT, EMERGENCY LINDO CHANNEL REPAIRS
PROJECT, BUTTE COUNTY, WDID NO. 5A04CR00386**

This letter serves to notify the City of Chico Public Works Department the Emergency Lindo Channel Repairs Project (Project) is certified under State Water Resources Control Board's Clean Water Act Section 401 General Water Quality Certification for Regional General Permit 8 for Emergency Repair and Protection Activities (General Order; Order WQ 2023-0061-DWQ). The project site is located at approximate latitude 39.7533° and longitude -121.8279° in Butte County, California.

This Notice of Applicability (NOA) is being issued to the City of Chico Public Works Department (hereinafter Enrollee) by the Central Valley Regional Water Quality Control Board (Central Valley Water Board) under the General Order pursuant to Section 3838 of the California Code of Regulations. A copy of the General Order is enclosed and may also be accessed on [State Water Resources Control Board's General Orders Web Page](https://www.waterboards.ca.gov/water_issues/programs/cwa401/generalorders.html#yr_2023) (https://www.waterboards.ca.gov/water_issues/programs/cwa401/generalorders.html#yr_2023).

The Project must proceed in accordance with the requirements contained in this NOA and the General Order. The Project is described in the Notice of Intent requesting coverage and supplemental information (Application Package) submitted by the Enrollee and is limited to the impacts identified in the Application Package and described in this NOA. If the Project is modified from that described in the Application Package, then coverage under the General Order is no longer valid.

I. EMERGENCY WORK DESCRIPTION

The Enrollee will conduct emergency erosion repairs within the Lindo Channel at two actively eroding sites along Manzanita Avenue near Howard Drive in Chico, CA. The Project consists of backfilling the eroded bank and channel edge followed by the placement of erosion control fabric and rock slope protection (RSP) on repaired sections. All work will be completed from the top of bank with equipment sufficient to reach the work area. Exposed soil will be track-walked prior to placement of erosion control fabric. The majority of work is anticipated to occur outside standing or flowing water. However, if some flow through the work area remains, it may become necessary to either 1) divert flow away from and around the work area using cubic yard super bags placed upstream of the site via crane; or 2) through placement of clean washed RSP at a rate slow enough to not generate turbidity increases that exceed allowable limits in surface water.

If surface water is present, continuous visual surface water monitoring shall be conducted during active construction periods to detect accidental discharge of construction related pollutants. Surface water sampling will occur when performing any in-water work; during the entire duration of temporary surface water diversions; in the event that the Project activities result in any materials reaching surface waters; or when any activities result in the creation of a visible plume in surface waters.

Repair Area 1 is approximately 13' deep, 121' long, and 30' wide, encompassing approximately 0.10 acre. An outfall exists at the downstream limit of Repair Area 1 which will be repaired/replaced in-kind if damage has occurred. It is unknown if a culvert at the westerly edge of Repair Area 1 is compromised and in need of repair and/or replacement. The culvert is metal corrugated pipe that appears to be approximately 18-24" in diameter. If replacement/repair is needed, it will be replaced in-kind with no additional structuring or upsizing from the original design. Repair Area 2 is approximately 135' long, 20' wide, and ranges from 4-10' deep, encompassing approximately 0.05 acre. The total volume of fill to be placed below the ordinary high water mark (OHWM) is approximately 60 cubic yards (over approximately 256 linear feet of bank edge). The total project area is approximately 0.67 acre.

II. DESCRIPTION OF DIRECT IMPACTS TO WATERS

Total Project fill/excavation quantities for all impacts are summarized in Table 1.

Table 1: Total Project Fill/Excavation Quantity for Temporary Impacts

Aquatic Resources Type	Acres	Cubic Yards	Linear Feet
Stream Channel	0.15	60	256

III. REPORTING

The Enrollee must notify the Central Valley Water Board no less than forty-eight (48) hours prior to initiating the emergency project.

A Notice of Completion (NOC) shall be submitted by the Enrollee within 45 calendar days of completion of Project activities. The NOC shall demonstrate that the work has been carried out in accordance with the description provided in the Enrollee's Notice of Intent.

Failure to comply with the terms and conditions of this NOA may expose the Enrollee to enforcement action pursuant to the Clean Water Act and California Water Code.

**IV. CENTRAL VALLEY REGIONAL WATER QUALITY CONTROL BOARD
CONTACT:**

If you have any questions regarding this Notice of Applicability, please contact Daniel Warner at (530) 224-4848 or Daniel.Warner@Waterboards.ca.gov.

Original Signed by Clint E. Snyder, AEO
For Patrick Pulupa, Executive Officer
Central Valley Regional Water Quality Control Board

1/14/2026
Date

DLW: db

Attachment A - Project Maps

Attachment B - Receiving Water, Impacts, and Mitigation Information

Enclosure: State Water Resources Control Board's Clean Water Act Section 401
General Water Quality Certification for Regional General Permit 8 for
Emergency Repair and Protection Activities (Order
WQ 2023-0061-DWQ)

cc via email: U.S. EPA, Region 9, San Francisco
Water Quality Certification Program, SWRCB, Sacramento
Lillian Jepson, U.S. Army Corps of Engineers, Sacramento District
Carol Wallen Adema, Adema Environmental, Chico

(This page intentionally left blank)

Attachment A

Figure 1: Project Location Map

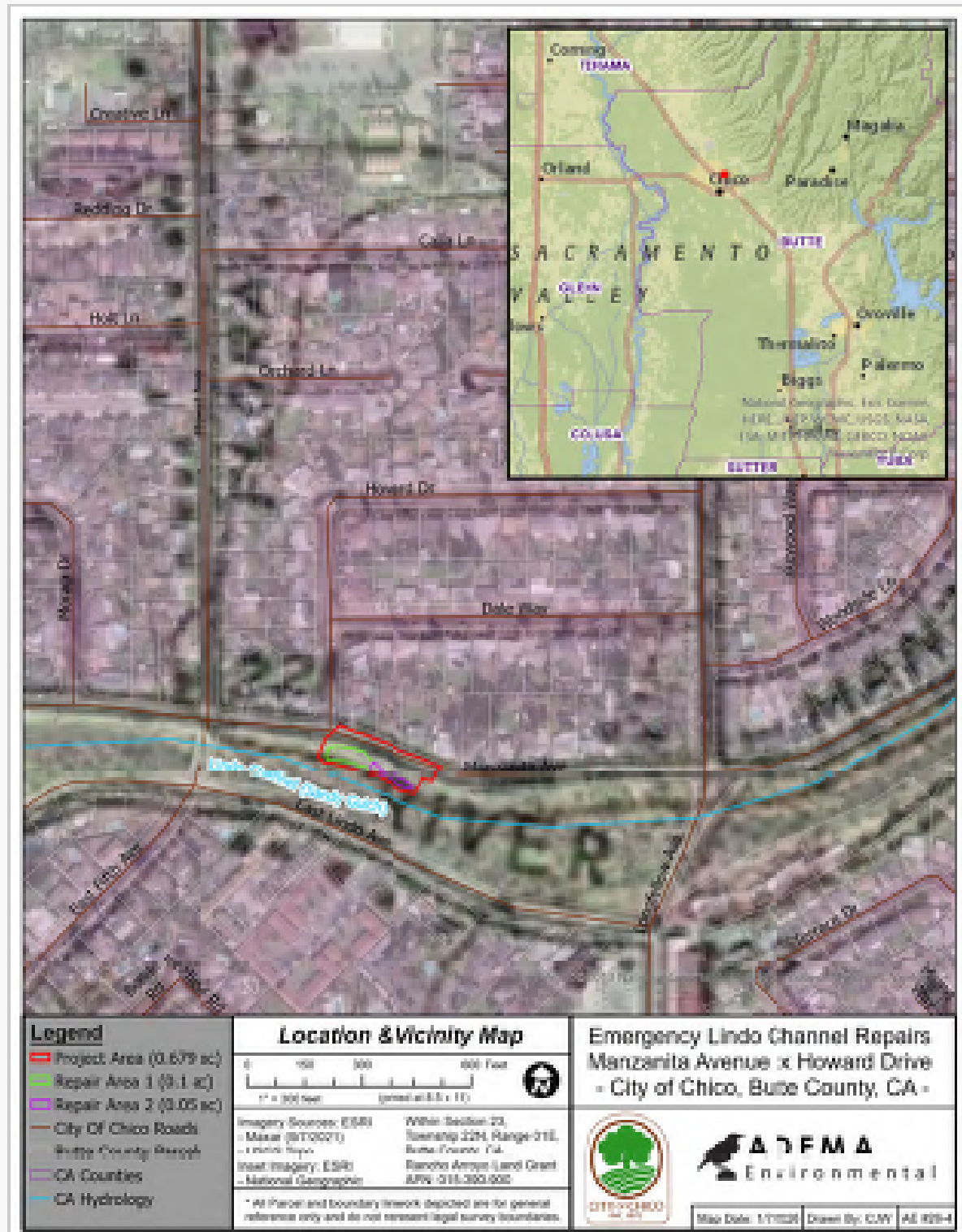


Figure 2. Project Aquatic Resources Delineation Map

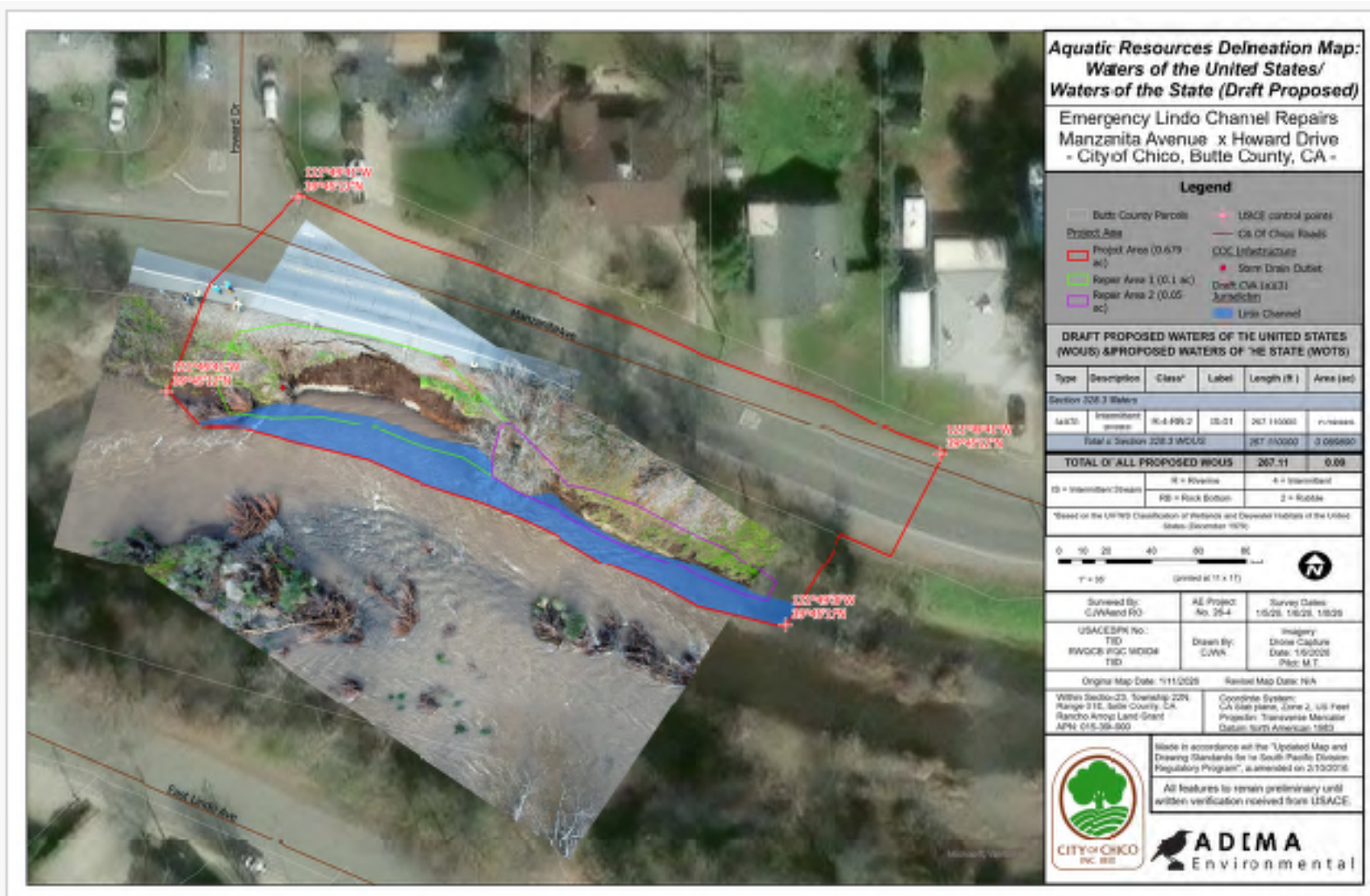
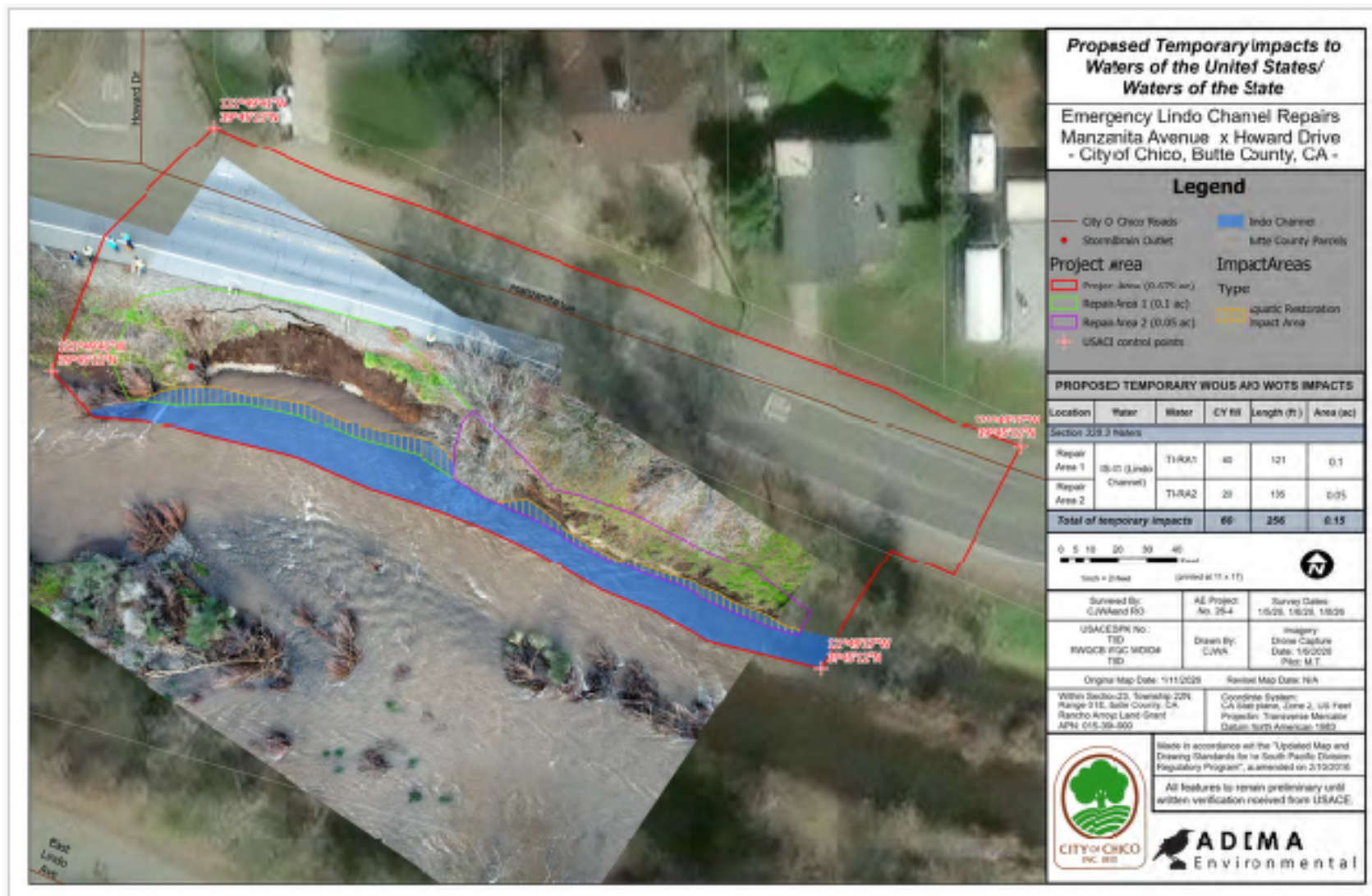


Figure 3. Project Impact Locations



(This page intentionally left blank)

Receiving Waters, Impacts and Mitigation Information

The following table shows the receiving waters associated with each impact site.

Table 1: Receiving Waters Information

Site ID	Waterbody Name	Impacted Aquatic Resource Type	Water Board Hydrologic Units	Receiving Waters	Receiving Waters Beneficial Uses	303d Listing Pollutant	California Rapid Assessment Method (CRAM) ID
Lindo Channel	Lindo Channel	Stream Channel	504.20	Big Chico Creek	AGR, REC-1, REC-2, WARM, COLD, MIGR, SPWN, WILD	Not Applicable	Not Applicable

Individual Direct Impact Locations

The following tables show individual impacts.

Table 2: Individual Temporary Fill/Excavation Impact Information

Impact Site ID	Latitude	Longitude	Indirect Impact Requiring Mitigation?	Acres	Cubic Yards	Linear Feet
Lindo Channel	39.7533°	-121.8279°	No	0.15	60	256