



Central Valley Regional Water Quality Control Board

27 June 2025

Matt Teague
California State Parks
400 Glen Drive
Oroville, CA 95966

**NOTICE OF APPLICABILITY: STATE WATER RESOURCES CONTROL BOARD
CLEAN WATER ACT SECTION 401 GENERAL WATER QUALITY CERTIFICATION
FOR REGIONAL GENERAL PERMIT 8 (ORDER WQ 2023-0061-DWQ), CALIFORNIA
STATE PARKS, NORTHERN BUTTES DISTRICT, IRVINE FINCH BOAT ACCESS
RAMP SEDIMENT REMOVAL PROJECT, GLENN COUNTY, WQID NO.
5A11CR00057**

This letter serves to notify California State Parks, Northern Buttes District the Irvine Finch Boat Access Ramp Sediment Removal Project (Project) is certified under State Water Resources Control Board's Clean Water Act Section 401 General Water Quality Certification for Regional General Permit 8 for Emergency Repair and Protection Activities (General Order; Order WQ 2023-0061-DWQ). The project site is located at approximate latitude 39.7501 and longitude -121.9970 in Glenn County, California.

This Notice of Applicability (NOA) is being issued to California State Parks Northern Buttes District (hereinafter Enrollee) by the Central Valley Regional Water Quality Control Board (Central Valley Water Board) under the General Order pursuant to Section 3838 of the California Code of Regulations. A copy of the General Order is enclosed and may also be accessed on [State Water Resources Control Board's General Orders Web Page](https://www.waterboards.ca.gov/water_issues/programs/cwa401/generalorders.html#yr_2023)

(https://www.waterboards.ca.gov/water_issues/programs/cwa401/generalorders.html#yr_2023).

The Project must proceed in accordance with the requirements contained in this NOA and the General Order. The Project is described in the Notice of Intent requesting coverage and supplemental information (Application Package) submitted by the Enrollee and is limited to the impacts identified in the Application Package and described in this NOA. If the Project is modified from that described in the Application Package, then coverage under the General Order is no longer valid.

I. EMERGENCY WORK DESCRIPTION

The Enrollee is proposing to remove/excavate approximately 20 cubic yards of fine sediment (sand and gravel) that has settled on and near the end of the Irvine Finch Boat Access Ramp. This sediment has filled in the ramp and trailered boats can no longer launch from this site, including Butte and Glenn County Sheriff/Search and Rescue boats for river rescue.

The Enrollee's equipment operator will remove the sediment that is blocking the ramp access. Sediment will be removed by a long-arm excavator which will remain on the ramp and out of the water. The excavator will reach out into the water to scoop material, place in a dump truck, and then haul to an upland site on the land side of the levee. Two rows of wattles will be placed at the bottom of the ramp to reduce sediment runoff back onto the ramp.

II. DESCRIPTION OF DIRECT IMPACTS TO WATERS

Total Project fill/excavation quantities for all impacts are summarized in Table 1. Permanent impacts are categorized as those resulting in a physical loss in area and also those degrading ecological condition.

The project will result in a total of 0.05 acre of temporary impacts to waters:

- Approximately 0.05 acre (60 linear feet) of aquatic resources in the Sacramento River will be temporarily impacted. These impacts will result from the removal of approximately 20 cubic yards of sediment from the Irvine Finch Boat Ramp in Glenn County.

Table 1: Total Project Fill/Excavation Quantity for Temporary Impacts¹

Aquatic Resources Type	Acres	Cubic Yards	Linear Feet
Stream Channel	0.05	20	60

III. COMPENSATORY MITIGATION – Not Applicable

IV. REPORTING

The Enrollee must notify the Central Valley Water Board no less than forty-eight (48) hours prior to initiating the emergency project.

A Notice of Completion (NOC) shall be submitted by the Enrollee within 45 calendar days of completion of Project activities. The NOC shall demonstrate that the work

¹ Includes only temporary direct impacts to waters of the state and does not include area of temporary disturbance which could result in a discharge to waters of the state. Temporary impacts, by definition, are restored to pre-project conditions and therefore do not include a physical loss of area or degradation of ecological condition.

has been carried out in accordance with the description provided in the Enrollee's Notice of Intent.

Failure to comply with the terms and conditions of this NOA may expose the Enrollee to enforcement action pursuant to the Clean Water Act and California Water Code.

**V. CENTRAL VALLEY REGIONAL WATER QUALITY CONTROL BOARD
CONTACT:**

If you have any questions regarding this Notice of Applicability, please contact Daniel Warner at (530) 224-4848 or Daniel.Warner@Waterboards.ca.gov.

Original Signed by Clint E. Snyder, AEO
For Patrick Pulupa, Executive Officer
Central Valley Regional Water Quality Control Board

6/27/2025
Date

DLW: db

Attachment A - Project Maps

Attachment B - Receiving Water, Impacts, and Mitigation Information

Enclosure: State Water Resources Control Board's Clean Water Act Section 401
General Water Quality Certification for Regional General Permit 8 for
Emergency Repair and Protection Activities (Order
WQ 2023-0061-DWQ)

cc via email: U.S. EPA, Region 9, San Francisco
Water Quality Certification Program, SWRCB, Sacramento
Kyler Walsh, U.S. Army Corps of Engineers, Sacramento District

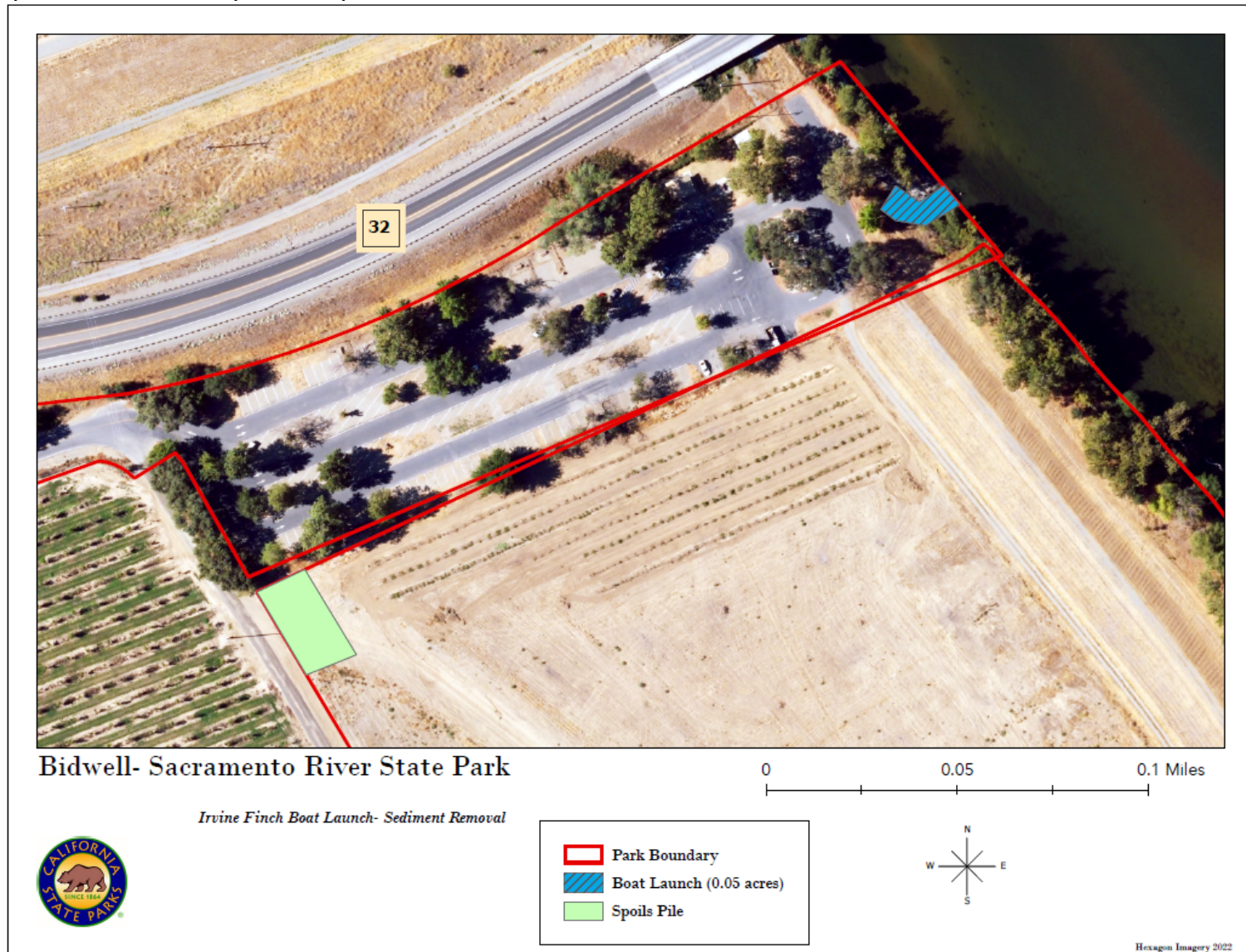
(This page intentionally left blank)

Attachment A

Figure 1: Project Location Map



Figure 2. Aquatic Resource Impacts Map



(This page intentionally left blank)

Receiving Waters, Impacts and Mitigation Information

The following table shows the receiving waters associated with each impact site.

Table 1: Receiving Waters Information

Site ID	Waterbody Name	Impacted Aquatic Resource Type	Water Board Hydrologic Units	Receiving Waters	Receiving Waters Beneficial Uses	303d Listing Pollutant	California Rapid Assessment Method (CRAM) ID
Irvine Finch Boat Access Ramp	Sacramento River	Stream	504.20	Sacramento River, Shasta Dam to Colusa Basin Drain	MUN, AGR, IND, POW, REC-1, REC-2, WARM, COLD, MIGR, SPWN, WILD, NAV	DDT, Dieldrin, Mercury, Dissolved Oxygen, PCBs, Toxicity	Not Applicable

Individual Direct Impact Locations

The following tables show individual impacts.

Table 2: Individual Temporary Fill/Excavation Impact Information

Impact Site ID	Latitude	Longitude	Indirect Impact Requiring Mitigation?	Acres	Cubic Yards	Linear Feet
Irvine Finch Boat Access Ramp	39.7501	-121.9970	No	0.05	20	60