
Central Valley Regional Water Quality Control Board

28 August 2025

Linda Peters
Sacramento Area Sewer District
10060 Goethe Rd
Sacramento, CA 95827
Petersli@sacsewer.com

NOTICE OF APPLICABILITY FOR COVERAGE UNDER GENERAL ORDER NO. R5-2019-0023, WASTE DISCHARGE REQUIREMENTS AND CLEAN WATER ACT SECTION 401 WATER QUALITY CERTIFICATION OF THE SOUTH SACRAMENTO HABITAT CONSERVATION PLAN PROGRAMMATIC GENERAL PERMIT, LOWER CENTRAL INTERCEPTOR (LCI) REHABILITATION PROJECT (WDID#5A34CR00759-033), SACRAMENTO COUNTY

On 30 May 2025, Sacramento Area Sewer District submitted a Notice of Intent (NOI) to enroll under and comply with Central Valley Regional Water Quality Control Board (Central Valley Water Board) General Order No. R5-2019-0023, Waste Discharge Requirements and Clean Water Act Section 401 Water Quality Certification of the South Sacramento Habitat Conservation Plan Programmatic General Permit.

The Central Valley Water Board has reviewed your enrollment materials and finds the Lower Central Interceptor (LCI) Rehabilitation Project (Project) meets the requirements of, and is hereby enrolled under, General Order R5-2019-0023. You may proceed with your Project in accordance with the Order.

A copy of the General Order No. R5-2019-0023 can be found on the [Central Valley Water Board's Adopted Orders webpage](https://www.waterboards.ca.gov/centralvalley/board_decisions/adopted_orders/sacramento/r5-2019-0023.pdf) (https://www.waterboards.ca.gov/centralvalley/board_decisions/adopted_orders/sacramento/r5-2019-0023.pdf).

Please familiarize yourself with the requirements of General Order R5-2019-0023. You are responsible for complying with all applicable Order requirements. Failure to comply with General Order R5-2019-0023 constitutes a violation of the California Water Code and may result in enforcement action or termination of enrollment under the Order.

PROJECT DESCRIPTION:

The Proposed Project includes structural rehabilitation of the LCI pipeline using Cured-in-Place Pipe (CIPP) lining, a trenchless rehabilitation process in which a resin-impregnated liner is inserted into the deteriorated pipeline and cured using hot water,

creating a new “pipe within a pipe.” Because of the large size of the LCI pipeline, the CIPP liner will be inserted via approximately 20 excavation pits, approximately 15 feet by 15 feet and as deep as the existing pipeline ranging from 16 to 28 feet, along the LCI pipeline alignment, spaced at intervals of approximately 2,000 feet apart. The work areas associated with each excavation pit would be approximately 50 feet by 250 feet to accommodate equipment and material staging and contractor access. The CIPP pit locations would be excavated using standard excavation methods. Soils excavated from the launch pit locations, if of suitable quality, would be stockpiled alongside the excavation or in staging areas for later reuse in backfilling the excavation. If not reusable, the soil would be hauled off-site for disposal. Upon completion of the liner insertion, each excavation location will be backfilled and the surface restored to pre-project conditions using the upper 12 inches of topsoil.

Approximately 0.023 acre of vernal pool habitat will be permanently impacted by ground disturbance during construction. Approximately 0.288 acre of vernal pool habitat will be temporarily filled with wetland mats to protect the pool basins from construction access during construction. Sacramento Area Sewer District has opted to purchase In-Lieu Fee credits from the South Sacramento Habitat Conservation Plan In-Lieu Fee (ILF) Program for temporarily impacted areas in lieu of restoring temporarily impacted areas to pre-project conditions. Approximately 0.44 acre of vernal pool habitat will be indirectly impacted from impacted areas that will not be restored to pre-project conditions.

PROJECT TYPE

Underground Utilities

ADDITIONAL CONDITION:

The Applicant shall obtain coverage under the National Pollutant Discharge Elimination System (NPDES) General Permit for Storm Water Discharges Associated with Construction and Land Disturbance Activities Order No. 2009-0009-DWQ, as amended for discharges to surface waters comprised of storm water associated with construction activity, including, but not limited to, demolition, clearing, grading, excavations, and other land disturbance activities of one or more acres, or where projects disturb less than one acre but are part of a larger common plan of development that in total disturbs one or more acres.

PROJECT LOCATION:

The Project Area is located within the City of Sacramento as well as western unincorporated Sacramento County. The Proposed Project Area extends from the Echo Water Facility in Elk Grove, California to Elk Grove-Florin Road just south of Gerber Road in Sacramento, California.

Sections 6,7,13,14,15,16,17, Township 7 North, Ranges 5,6 East, MDB&M

Latitude: 38.456684° and Longitude: -121.452589°

PROJECT SCHEDULE:

December 2025 through October 2028

COMPENSATORY MITIGATION

The Applicant shall purchase a minimum of 0.75 vernal pool ILF Credits from the SSHCP ILF Program. The Applicant shall provide evidence of compensatory mitigation to the Central Valley Water Board. At a minimum, compensatory mitigation must achieve a ratio of 1:1 for permanent impacts. Compensatory mitigation must comply with the effective policy, which ensures no overall net loss of wetlands for impacts to waters of the state, at the time of Certification.

Evidence of compliance with compensatory mitigation requirements includes providing a letter from the SSHCP ILF Program. The letter must: a) be on the SSHCP letterhead; b) be signed by an authorized representative of the SSHCP, c) indicate the United States Army Corps of Engineers' SPK number; d) describe the Project name and location; and e) detail the type of in-lieu fees paid for the Project's impacts.

APPLICATION FEE RECEIVED:

An application fee of \$ 4,212.00 was received on 19 June 2025. The remaining application fee balance of \$7,427.00 was received on 24 July 2025.

The fee amount was determined as required by California Code of Regulations, title 23, sections 3833(b)(3) and 2200(a)(3), and was calculated as A - Fill & Excavation Discharges (fee code 84) with the dredge and fill fee calculator.

PROJECT SPECIFIC AVOIDANCE AND MINIMIZATION MEASURES:

The Permittee shall implement the Avoidance and Minimization Measures submitted on 12 June 2025.

If you have any questions regarding this Notice of Applicability, please contact Nicholas Savino at (916) 464-4920 or Nicholas.Savino@waterboards.ca.gov.

Original Signed by Anne Walter for:
Patrick Pulupa
Executive Officer

cc: [Via email only]

United States Army Corps of Engineers
(SPK-1995-00386)
Sacramento District Office
Regulatory Division
SPKRegulatoryMailbox@usace.army.mil

United States Environmental Protection
Agency
R9CWA401@epa.gov

CWA Section 401 WQC Program
State Water Resources Control Board
Stateboard401@waterboards.ca.gov

Richard McHenry
CA Sportfishing Protection Alliance
RMcHenry@calsport.org

Danielle Tannourji
HDR, Inc.
Danielle.Tannourji@hdrinc.com

Figure 1: Project Location

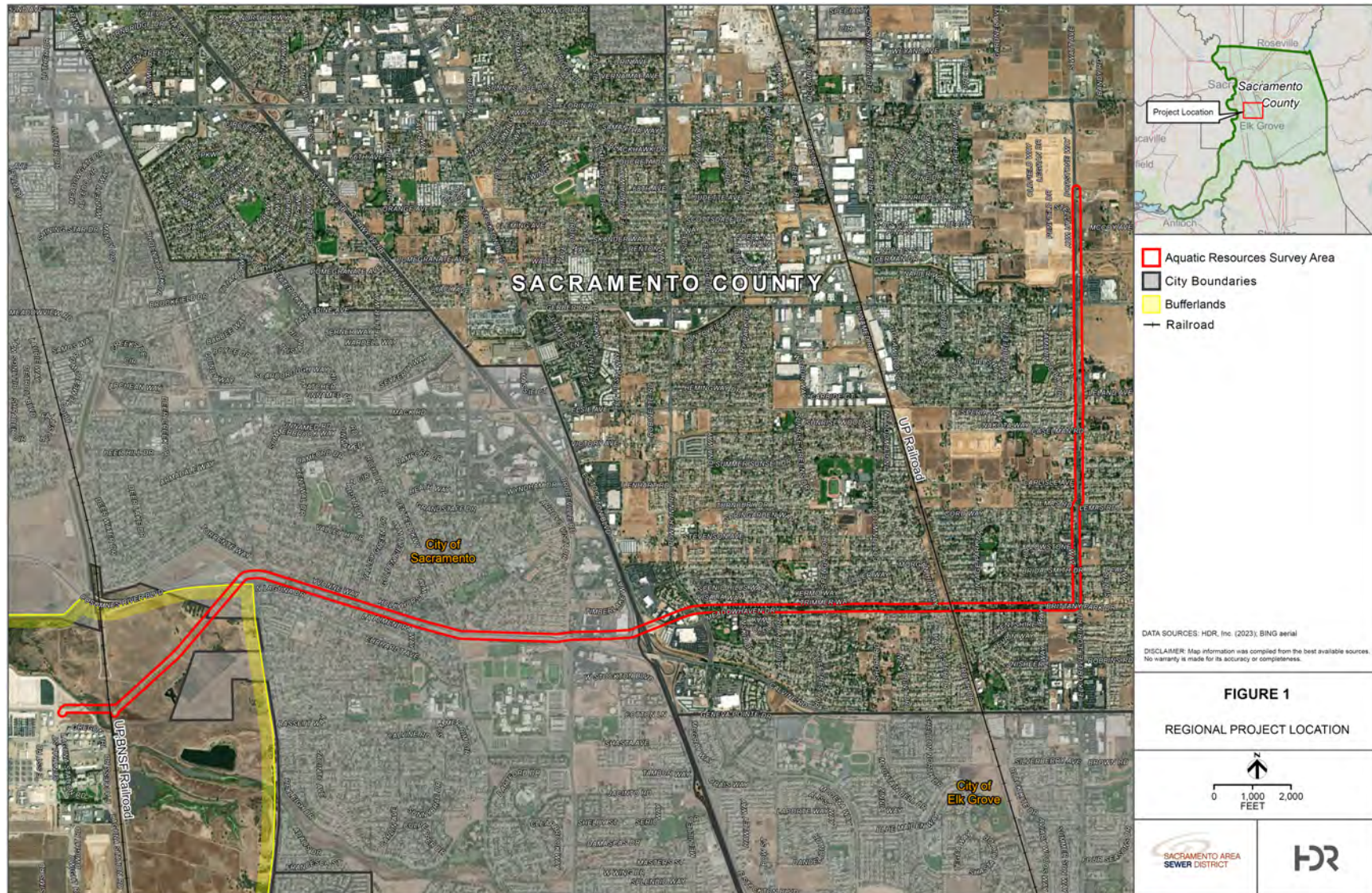


Figure 2: Project Impacts



Figure 3: Project Impacts

