



Central Valley Regional Water Quality Control Board

CLEAN WATER ACT SECTION 401 WATER QUALITY CERTIFICATION AND ORDER

Effective Date:	13 December 2023	<table border="1"><tr><td>Reg. Meas. ID:</td><td>452354</td></tr><tr><td>Place ID:</td><td>887858</td></tr><tr><td>WDID No.:</td><td>5A34CR00873</td></tr><tr><td>USACE No.:</td><td>SPK-2023-00415 NWP 3</td></tr></table>	Reg. Meas. ID:	452354	Place ID:	887858	WDID No.:	5A34CR00873	USACE No.:	SPK-2023-00415 NWP 3
Reg. Meas. ID:	452354									
Place ID:	887858									
WDID No.:	5A34CR00873									
USACE No.:	SPK-2023-00415 NWP 3									
Expiration Date:	12 December 2028									
Program Type:	Fill/Excavation									
Project Type:	Bridges, Overpasses and Crossings									
Project:	Citrus Heights Bridge Preventative Maintenance Program (BMPM) Project (Project)									
Applicant:	City of Citrus Heights									
Applicant Contact:	Leslie Blomquist City of Citrus Heights 6360 Fountain Square Drive Citrus Heights, CA 95621 Phone: (916) 727-4770 Email: lblomquist@citrusheights.net									
Applicant's Agent:	Mike Trueblood LSA 1504 Eureka Road, Suite 310 Roseville, CA 95661 Phone: (916) 772-7450 Email: mike.trueblood@lsa.net									
Water Board Staff:	Peter Minkel Engineering Geologist 11020 Sun Center Drive, Suite 200 Rancho Cordova, CA 95670 Phone: (916) 464-4684 Email: PeterG.Minkel@waterboards.ca.gov									

Water Board Contact Person: If you have any questions, please call Regional Water Quality Control Board, Central Valley Region (Central Valley Water Board) Staff listed above or (916) 464-3291 and ask to speak with the Water Quality Certification Unit Supervisor.

MARK BRADFORD, CHAIR | PATRICK PULUPA, ESQ., EXECUTIVE OFFICER

Table of Contents

I. Order	3
II. Public Notice.....	3
III. Project Purpose	3
IV. Project Description	3
V. Project Location.....	7
VI. Project Impact and Receiving Waters Information.....	7
VII. Description of Direct Impacts to Waters of the State	8
VIII. Description of Indirect Impacts to Waters of the State.....	8
IX. Avoidance and Minimization	8
X. Compensatory Mitigation	10
XI. California Environmental Quality Act (CEQA).....	10
XII. Petitions for Reconsideration.....	10
XIII. Fees Received.....	10
XIV. Conditions	10
XV. Water Quality Certification.....	27
Attachment A – Project Maps	A-1
Attachment B – Receiving Waters, Impacts and Mitigation Information	B-1
Attachment C – CEQA Findings of Fact	C-1
Attachment D – Reports and Notification Requirements	D-1
Attachment E – Signatory Requirements.....	E-1
Attachment F – Certification Deviation Procedures	F-1
Attachment G - Compliance with Code of Federal Regulations, Title 40, Section 121.7, Subdivision (d).....	G-1

I. Order

This Clean Water Act (CWA) section 401 Water Quality Certification action and Order (Order) is issued at the request of the City of Citrus Heights (hereinafter Permittee) for the Project. This Order is for the purpose described in application and supplemental information submitted by the Permittee. The application was received on 20 March 2023. The application was deemed complete on 20 April 2023. Central Valley Water Board staff requested additional information necessary to supplement the contents of the complete application and the Permittee responded to the request for supplemental information on the following dates:

Date of Request for Supplemental Information: 24 November 2023
Date all requested information was received: 27 November 2023

II. Public Notice

The Central Valley Water Board provided public notice of the application pursuant to California Code of Regulations, title 23, section 3858 from 28 April 2023 to 12 May 2023. The Central Valley Water Board did not receive any comments during the comment period.

III. Project Purpose

The purpose of the Project is to maintain constructed drainage and flood protection infrastructure and the design capacity of creeks, drainage channels and other physical structures within the City limits in order to provide ongoing implementation of routine maintenance activities, capital improvement projects, erosion control projects, and vegetation restoration activities.

IV. Project Description

The project consists of performing minor maintenance repairs to twenty-two bridges reviewed by the City of Citrus Heights (City). Maintenance activities for the twenty-two bridges consist of upstream cleaning, culvert cleaning, methacrylate deck repair, spall repair, rock-slope protection repair, guardrail repair, and vegetation clearing.

Some repairs, such as methacrylate deck repair and guard-rail repair, can be completed without requiring in-water work. Two of the bridges (Bridges 24C0322 and 24C0394) proposed include above deck work only. The remaining twenty bridges include maintenance activities such as vegetative clearing, removal of debris and trash, spall and rock-slope protection repair, and removal of blockages impeding water flow. Based on the description of work, repairs to twenty of the twenty-two bridges will likely require work in their respective channels.

Total size of the entire project area for all work/activities/construction that will be performed to meet the final goal is 4.31 acres. The following repairs are scheduled:

24C0084 - Auburn Boulevard over Arcade Creek Proposed maintenance activities include removal and replacement of eight unsound concrete patches from the span two side of the bent cap between columns three and six. Work will

be accomplished by personnel with hand equipment with direct access from the roadway on the south end of the bridge. Work is expected to take two working days to complete.

24C0085 - Auburn Boulevard over Cripple Creek Proposed maintenance activities include removal of debris on the upstream side of bent two. Work under the bridge will be accomplished by personnel with hand equipment with direct access from the roadway on the east end of the bridge. Work is expected to take half a day to complete.

24C0207 - Greenback Lane over Arcade Creek Proposed maintenance activities include removal of soil accumulated in barrels one, two, and four. Work will be accomplished with a tract bobcat and hand equipment with direct access from the roadway on the north end of the bridge and will require water diversion. Work is expected to take ten working days to complete.

24C0208 - Greenback Lane over Tributary to Arcade Creek Proposed maintenance activities include removal of accumulations of silt and garbage from the channel downstream of the culvert barrels. Work will be accomplished with a loader/excavator and hand equipment with direct access from the roadway on the north end of the bridge and will require water diversion. Work is expected to take three working days to complete.

24C0216 - Sunrise Boulevard over Arcade Creek Proposed maintenance activities include repairing the concrete soffit spalls under both barrels to patch exposed/corroded rebar, as well as grubbing a tree. Work will be accomplished by personnel with hand equipment. Access will be from Sunrise Boulevard. Work is expected to take one working day to complete.

24C0319 - Van Maren Lane over Arcade Creek Proposed maintenance activities include replacing failed concrete slope paving on the southeast end of the bridge, placing rock slope protection along the bottom of the slope paving at abutment one, and removing woody debris and a tree on the east end of the bridge between bents two and three. Pruning of a tree on the west end between bent four and the abutment will also be required. Work will be accomplished with a loader/excavator, or tract bobcat, a possible dump truck, and hand equipment with direct access from the roadway on the east end of the bridge and will require water diversion. Staging will occur on adjacent pedestrian path on the southeast end of the bridge. Work is expected to take fifteen working days to complete.

24C0321 - Patten Avenue over Cripple Creek Proposed maintenance activities include removing debris on the upstream side of four columns within bents two and three, removal of one tree, and soil removal between the bents. Work under the bridge will be accomplished by personnel with hand equipment with direct access from the roadway on both ends of the bridge. Work is expected to take one day to complete.

24C0327 - Brooktree Drive over Brooktree Creek Proposed maintenance activities include removing debris from the upstream side of the easternmost

column of the bridge. Work under the bridge will be accomplished by personnel with hand equipment with direct access from the roadway on the southeast end of the bridge. Work is expected to take half a day to complete.

24C0366 - Antelope Road over Cripple Creek Proposed maintenance activities include removing soil accumulated in and upstream of barrel one (westmost barrel). Work will be accomplished with a loader/excavator, or tract bobcat, and hand equipment with direct access from the roadway on the north end of the bridge. Work is expected to take ten working days to complete.

24C0367 - Sylvan Road over Arcade Creek Proposed maintenance activities include removing soil accumulated upstream and in both barrels and removal of one tree. Work will be accomplished with a tract bobcat and hand equipment with direct access from the roadway on the east end of the bridge and will require water diversion. Work is expected to take five working days to complete.

24C0392 - Mariposa Avenue over Mariposa Creek Proposed maintenance activities include removing soil accumulated in both barrels and grubbing trees directly upstream of the culvert. Work will be accomplished with a loader/excavator, or tract bobcat, and hand equipment with direct access from the roadway on the east end of the bridge and will require water diversion. Work is expected to take five working days to complete.

24C0394 - Fair Way over Cripple Creek Proposed maintenance activities include removing debris from the upstream end of the crossing, grubbing one tree on the downstream end of the crossing, and removing soil accumulated in barrel two. Work will be accomplished with a loader/excavator, or tract bobcat, and hand equipment with direct access from the roadway on the west end of the bridge. Work is expected to take five working days to complete.

24C0395 - Matheny Way over Arcade Creek Proposed maintenance activities include applying Methacrylate to bridge deck, removing debris from the upstream side of first and third columns from the east end of the bridge, and placement of rock slope protection scour countermeasures downstream of the bridge on the north embankment. Work will be accomplished with a loader/excavator, or tract bobcat, a possible dump truck, and hand equipment and will require water diversion. Staging will occur on the northeast end of the bridge with direct access from the roadway on both ends of the bridge. Work is expected to take ten working days to complete.

24C0396 - Indian River Drive over Arcade Creek Proposed maintenance activities include applying methacrylate to the bridge deck and placing rock slope protection along the north and south slopes of the creek banks to reinforce the existing scour countermeasures. Work will be accomplished with a loader/excavator, or tract bobcat, a possible dump truck, and hand equipment. Staging will occur with direct access from the roadway on the southeast end of the bridge. Work is expected to take ten working days to complete.

24C0399 - Crosswoods Circle over Arcade Creek Proposed maintenance activities include placing rock slope protection along the south wall of the corrugated steel culvert from wingwall end to wingwall end, as well as over the southeast embankment slope directly upstream. Work will be accomplished with a loader/excavator, or tract bobcat, and hand equipment and will require water diversion. Staging will occur on the southeast end of the bridge requiring a portion of the sidewalk railing to be removed for access from the roadway on the east end of the bridge. Work is expected to take ten working days to complete.

24C0400 - Calvin Drive over Cripple Creek Proposed maintenance activities include removing woody debris upstream and soil downstream of the culvert barrels. Work under the bridge will be accomplished with a loader/excavator and hand equipment with direct access from the roadway on the southwest end of the bridge and will require water diversion. Work is expected to take five working days to complete.

24C0437 - Watson Way over Cripple Creek Proposed maintenance activities include removal of soil from both barrels and guard rail repair on the easternmost end of the south side of the bridge. Work will be accomplished with a loader/excavator and hand equipment with direct access from the roadway on the south end of the bridge and will require water diversion. Work is expected to take five working days to complete.

24C0455 – Bridgemont Way over Cripple Creek Proposed maintenance activities include placement and compaction of aggregate base backfill in the scour location (along the west bank of the creek in front of the abutment), and replacement and backfill of articulated block slope protection. Work will be accomplished with hand equipment with direct access from the roadway on the southeast end of the bridge. Work is expected to take five working days to complete.

24C0626 - Woodside Drive over San Juan Creek Proposed maintenance activities include the removal of debris from bent two column five, removal of one tree directly south of the bridge, soil removal downstream of span one, and flushing out of the storm drain line. Work under the bridge will be accomplished by personnel with hand equipment with direct access from the roadway on the south end of the bridge. Work is expected to take one day to complete.

24C0635 – Fair Oaks Boulevard over Tributary to Arcade Creek Proposed maintenance activities include removal of silt and garbage accumulated directly upstream of the culvert barrels. Work will be accomplished with a loader/excavator and hand equipment with direct access from the roadway on the east end of the bridge and will require water diversion. Work is expected to take five working days to complete.

A water diversion system may be necessary if there is unexpected water in the channel(s) during construction at bridges 24C0084, 24C0085, 24C0207, 24C0208, 24C0216, 24C0319, 24C0321, 24C0327, 24C0366, 24C0367, 24C0392, 24C0394, 24C0395, 24C0396, 24C0399, 24C0400, 24C0437, and

24C0626. Construction activities consisting of woody debris removal, spall repair, tree grubbing, soil excavation, slope paving repair, rock slope protection placement, and articulated block slope protection installation will take place during low-flow months to reduce the probability of requiring creek diversions. If needed, creek diversions using sandbags or water pillows (with a temporary pipe culvert at bridges 24C0207, 24C0208, 24C0367, 24C0400, and 24C0635 only) may be implemented by the contractor to shift flow in the creek(s) around the work activities. Additionally, scaffolding or ladders may be needed within the creek bed to provide access to the spall repair locations at bridges 24C0084 and 24C0216.

For all diversions after the completion of in-water work, any temporary structures placed in the channel will be removed in a way that minimizes disturbance to drainage flows and water quality. All temporarily impacted channel areas will be restored to pre-project conditions. Water quality monitoring related to in-water work activities will be required from the contractor.

V. Project Location

County: Sacramento

Nearest City: Citrus Heights

Section 13, 23, 24, 26, 27, 31, 33, 34, 35, and 36, Township 10 North, Range 6 East, MDB&M.

Latitude: 38.684° and Longitude: -121.313°

Maps showing the Project location are found in Attachment A of this Order.

VI. Project Impact and Receiving Waters Information

The Project is located within the jurisdiction of the Central Valley Water Board. Receiving waters and groundwater potentially impacted by this Project are protected in accordance with the Water Quality Control Plan for the Sacramento River and San Joaquin River Basins, Fifth Edition, February 2019 (Basin Plan).. The plan for the region and other plans and policies may be accessed at the [State Water Resources Control Board's Plans and Policies Web page](http://www.waterboards.ca.gov/plans_policies/) (http://www.waterboards.ca.gov/plans_policies/). The Basin Plan includes water quality standards, which consist of existing and potential beneficial uses of waters of the state, water quality objectives to protect those uses, and the state and federal antidegradation policies.

It is the policy of the State of California that every human being has the right to safe, clean, affordable, and accessible water adequate for human consumption, cooking, and sanitary purposes. This Order promotes that policy by requiring discharges to meet maximum contaminant levels designed to protect human health and ensure that water is safe for domestic use.

Project impact and receiving waters information can be found in Attachment B. Table 1 of Attachment B shows the receiving waters and beneficial uses of waters of the

state impacted by the Project. Individual impact location and quantity is shown in Table 2 of Attachment B.

VII. Description of Direct Impacts to Waters of the State

Total Project fill/excavation quantities for all impacts are summarized in Tables 1 and 2. Permanent impacts are categorized as those resulting in a physical loss in area and also those degrading ecological condition.

Table 1: Total Project Fill/Excavation Quantity for Temporary Impacts¹

Aquatic Resources Type	Acres	Cubic Yards	Linear Feet
Stream Channel	0.671	433	
Wetland	0.041		

Table 2: Total Project Fill/Excavation Quantity for Permanent Physical Loss of Area Impacts

Aquatic Resources Type	Acres	Cubic Yards	Linear Feet
Stream Channel	0.02	134	
Wetland	0.002	14	

VIII. Description of Indirect Impacts to Waters of the State

The Central Valley Water Board recognizes the potential for indirect impacts to waters of the state associated with the Project. With implementation of avoidance and minimization measures described in the Avoidance and Minimization Section IX, indirect impacts are not anticipated.

IX. Avoidance and Minimization

To minimize the potential effects of construction on water quality and resources, the Permittee shall implement all measures required as described in the Order. According to the Permittee, the following measures will be in place during construction activities to avoid, reduce, and minimize impacts to waters of the state:

- The time period for completing the work within the wetted channel of Arcade Creek, Cripple Creek, their tributaries, and all other stream systems shall be restricted to periods of low stream flow and dry weather and shall be confined to the period of May 1st to October 15th.

¹ Includes only temporary direct impacts to waters of the state and does not include area of temporary disturbance which could result in a discharge to waters of the state. Temporary impacts, by definition, are restored to pre-project conditions and therefore do not include a physical loss of area or degradation of ecological condition.

Construction activities shall be timed with awareness of precipitation forecasts and likely increases in stream flow. Construction activities within the stream zone shall cease until all reasonable erosion control measures, inside and outside of the stream zone, have been implemented prior to all storm events. Revegetation, restoration and erosion control work is not confined to this time period.

In addition, work within the bed, bank or channel of any stream shall be restricted to days with less than a 30% chance of rain as reported by the National Weather Service within 72 hours of the scheduled start of maintenance. All erosion control measures shall be initiated Page 25 of 33 prior to all storm events. Revegetation, restoration and erosion control work is not confined to this work period.

If emergency maintenance is required, seasonal limitations do not apply. Emergency maintenance is defined as immediate emergency work necessary to protect life or property, or to restore public service facilities necessary to maintain service.

- The City must prevent chemicals, paint, oil, gas, petroleum products, and other hazardous substances from contaminating the soil and/or entering waters of the U.S. and State. Any equipment operated adjacent to a stream must be checked and maintained daily to prevent leaks of the listed materials. Refueling, lubricating and washing of vehicles and equipment must occur outside of the bed, bank, or channel of any stream and must not be placed in areas where harmful materials, if spilled, can enter waters. Stationary equipment such as motors, pumps, generators, compressors, and welders located within or adjacent to the stream must be positioned over drip pans or secondary containment.
- Measures consistent with the current Caltrans' Best Management Practices (BMP) Manual (including the Storm Water Pollution Prevention Plan (SWPPP) and Water Pollution Control Program (WPCP) Manuals) shall be implemented to minimize effects to aquatic habitats resulting from erosion, siltation, etc. during construction.
- Any emergent or submergent aquatic vegetation shall be retained as practical within the constraints of the proposed project. Where vegetation removal is necessary, rapidly sprouting plants, such as willows, shall be cut off at the ground line and the root systems left intact.
- Stabilization to the banks will be minimal and will only be implemented in areas where such an action is required to prevent sediment from entering the waters. The bank stabilization activities will not exceed 500 feet in length along the banks.

X. Compensatory Mitigation

The Permittee has agreed to provide compensatory mitigation for direct impacts, described in section VII for permanent impacts.

XI. California Environmental Quality Act (CEQA)

On 7 December 2018, the City of Citrus Heights, as lead agency, adopted an Initial Study/Mitigated Negative Declaration (IS/MND) (State Clearinghouse (SCH) No. 2018032040) for the Project and filed a Notice of Determination (NOD) at the SCH on 7 December 2018. Pursuant to CEQA, the Central Valley Water Board has made Findings of Facts (Findings) which support the issuance of this Order and are included in Attachment C.

XII. Petitions for Reconsideration

Any person aggrieved by this action may petition the Central Valley Water Board to reconsider this Order in accordance with California Code of Regulations, title 23, section 3867. A petition for reconsideration must be submitted in writing and received within 30 calendar days of the issuance of this Order.

XIII. Fees Received

An application fee of \$2,734.00 was received on 28 April 2023. The fee amount was determined as required by California Code of Regulations, title 23, sections 3833(b)(3) and 2200(a)(3) and was calculated as Category A - Fill & Excavation Discharges (fee code 84) with the dredge and fill fee calculator.

An additional fee of \$15,053.00, based on total Project impacts was received on 20 November 2023.

XIV. Conditions

The Central Valley Water Board has independently reviewed the record of the Project to analyze impacts to water quality and designated beneficial uses within the watershed of the Project. In accordance with this Order, the Permittee may proceed with the Project under the following terms and conditions:

A. Authorization

Impacts to waters of the state shall not exceed quantities shown in Tables 1 and 2.

B. Reporting and Notification Requirements

The following section details the reporting and notification types and timing of submittals. Requirements for the content of these reporting and notification types are detailed in Attachment D, including specifications for photo and map documentation during the Project. Written reports and notifications must be submitted using the Reporting and Notification Cover Sheet located in

Attachment D, which must be signed by the Permittee or an authorized representative.

The Permittee must submit all notifications, submissions, materials, data, correspondence, and reports in a searchable Portable Document Format (PDF). Documents less than 50 MB must be emailed to:
centralvalleysacramento@waterboards.ca.gov.

In the subject line of the email, include the Central Valley Water Board Contact, Project Name, and WDID No. Documents that are 50 MB or larger must be transferred to a disk and mailed to the Central Valley Water Board Contact.

1. Project Reporting

a. **Monthly Reporting:** The Permittee must submit a Monthly Report to the Central Valley Water Board on the 1st day of each month beginning the month after the submittal of the Commencement of Construction Notification. Monthly reporting shall continue until the Central Valley Water Board issues a Notice of Project Complete Letter to the Permittee.

b. **Annual Reporting - Not Applicable**

2. Project Status Notifications

a. **Commencement of Construction:** The Permittee shall submit a Commencement of Construction Report at least seven (7) days prior to start of initial ground disturbance activities and corresponding Waste Discharge Identification Number (WDID No.) issued under the NPDES General Permit for Storm Water Discharges Associated with Construction and Land Disturbance Activities (Order No. 2009-0009-DWQ; NPDES No. CAS000002).

b. **Request for Notice of Completion of Discharges Letter:** The Permittee shall submit a Request for Notice of Completion of Discharges Letter following completion of active Project construction activities, including any required restoration and permittee-responsible mitigation. This request shall be submitted to the Central Valley Water Board staff within thirty (30) days following completion of all Project construction activities. Upon acceptance of the request, Central Valley Water Board staff shall issue a Notice of Completion of Discharges Letter to the Permittee which will end the active discharge period.

c. **Request for Notice of Project Complete Letter:** The Permittee shall submit a Request for Notice of Project Complete Letter when construction and/or any post-construction monitoring is complete, and no further Project activities will occur. Completion of post-construction monitoring shall be determined by Central Valley Water Board staff and shall be contingent on successful attainment of restoration and mitigation performance criteria. This request shall be submitted to Central Valley

Water Board staff within thirty (30) days following completion of all Project activities. Upon approval of the request, the Central Valley Water Board staff shall issue a Notice of Project Complete Letter to the Permittee which will end the post discharge monitoring period.

3. Conditional Notifications and Reports:

The following notifications and reports are required as appropriate.

a. Accidental Discharges of Hazardous Materials²:

Following an accidental discharge of a reportable quantity of a hazardous material, sewage, or an unknown material, the following applies (Water Code, Section 13271):

- i. As soon as (A) Permittee has knowledge of the discharge or noncompliance, (B) notification is possible, and (C) notification can be provided without substantially impeding cleanup or other emergency measures then:
 - first call – 911 (to notify local response agency)
 - then call – Office of Emergency Services (OES) State Warning Center at:(800) 852-7550 or (916) 845-8911
 - Lastly, follow the required OES, procedures as set forth in the [Office of Emergency Services' Accidental Discharge Notification Web page](http://www.caloes.ca.gov/FireRescueSite/Documents/CalOES-Spill_Booklet_Feb2014_FINAL_BW_Acc.pdf) (http://www.caloes.ca.gov/FireRescueSite/Documents/CalOES-Spill_Booklet_Feb2014_FINAL_BW_Acc.pdf).
- ii. Following notification to OES, the Permittee shall notify Central Valley Water Board, as soon as practicable (ideally within 24 hours). Notification may be delivered via written notice, email, or other verifiable means.
- iii. Within five (5) working days of notification to the Central Valley Water Board, the Permittee must submit an Accidental Discharge of Hazardous Material Report.

² "Hazardous material" means any material that, because of its quantity, concentration, or physical or chemical characteristics, poses a significant present or potential hazard to human health and safety or to the environment if released into the workplace or the environment. "Hazardous materials" include, but are not limited to, hazardous substances, hazardous waste, and any material that a handler or the administering agency has a reasonable basis for believing that it would be injurious to the health and safety of persons or harmful to the environment if released into the workplace or the environment. (Health & Safety Code, Section 25501.)

b. Violation of Compliance with Water Quality Standards:

The Permittee shall notify the Central Valley Water Board of any event causing a violation of compliance with water quality standards. Notification may be delivered via written notice, email, or other verifiable means.

- i. This notification must be followed within three (3) working days by submission of a Violation of Compliance with Water Quality Standards Report.

c. In-Water Work and Diversions:

- i. The Permittee shall notify the Central Valley Water Board at least forty-eight (48) hours prior to initiating work in water or stream diversions. Notification may be delivered via written notice, email, or other verifiable means.
- ii. Within three (3) working days following completion of work in water or stream diversions, an In-Water Work/Diversions Water Quality Monitoring Report must be submitted to Central Valley Water Board staff.

d. Modifications to Project:

Project modifications may require an amendment of this Order. The Permittee shall give advance notice to Central Valley Water Board staff if Project implementation as described in the application materials is altered in any way or by the imposition of subsequent permit conditions by any local, state or federal regulatory authority by submitting a Modifications to Project Report. The Permittee shall inform Central Valley Water Board staff of any Project modifications that will interfere with the Permittee's compliance with this Order. Notification may be made in accordance with conditions in the certification deviation section of this Order.

e. Transfer of Property Ownership:

This Order is not transferable in its entirety or in part to any person or organization except after notice to the Central Valley Water Board in accordance with the following terms:

- i. The Permittee must notify the Central Valley Water Board of any change in ownership or interest in ownership of the Project area by submitting a Transfer of Property Ownership Report. The Permittee and purchaser must sign and date the notification and provide such notification to the Central Valley Water Board at least 10 days prior to the transfer of ownership. The purchaser must also submit a written request to the Central Valley Water Board to be named as the permittee in a revised order.
- ii. Until such time as this Order has been modified to name the purchaser as the permittee, the Permittee shall continue to be responsible for all requirements set forth in this Order.

f. Transfer of Long-Term BMP Maintenance:

If maintenance responsibility for post-construction BMPs is legally transferred, the Permittee must submit to the Central Valley Water Board a copy of such documentation and must provide the transferee with a copy of a long-term BMP maintenance plan that complies with manufacturer or designer specifications. The Permittee must provide such notification to the Central Valley Water Board with a Transfer of Long-Term BMP Maintenance Report at least 10 days prior to the transfer of BMP maintenance responsibility.

C. Water Quality Monitoring

1. General:

If surface water is present continuous visual surface water monitoring shall be conducted during active construction periods to detect accidental discharge of construction related pollutants (e.g. oil and grease, turbidity plume, or uncured concrete). Sampling is not required in a wetland where the entire wetland is being permanently filled, provided there is no outflow connecting the wetland to surface waters. The Permittee shall perform surface water sampling:

- a. when performing any in-water work;
- b. during the entire duration of temporary surface water diversions;
- c. in the event that the Project activities result in any materials reaching surface waters; or
- d. when any activities result in the creation of a visible plume in surface waters.

2. Accidental Discharges/Noncompliance:

Upon occurrence of an accidental discharge of hazardous materials or a violation of compliance with a water quality standard, Central Valley Water Board staff may require water quality monitoring based on the discharge constituents and/or related water quality objectives and beneficial uses.

3. In-Water Work or Diversions:

During planned in-water work, dewatering activities, or during the installation of removal of temporary water diversions, any discharge(s) to waters of the state shall conform to the following water quality standards:

- a. Waters shall not contain oils, greases, waxes, or other materials in concentrations that cause nuisance, result in a visible film or coating on the surface of the water or on objects in the water, or otherwise adversely affect beneficial uses.
- b. Activities shall not cause turbidity increases in surface water to exceed:

- i. where natural turbidity is less than 1 Nephelometric Turbidity Units (NTUs), controllable factors shall not cause downstream turbidity to exceed 2 NTU;
- ii. where natural turbidity is between 1 and 5 NTUs, increases shall not exceed 1 NTU;
- iii. where natural turbidity is between 5 and 50 NTUs, increases shall not exceed 20 percent;
- iv. where natural turbidity is between 50 and 100 NTUs, increases shall not exceed 10 NTUs;
- v. where natural turbidity is greater than 100 NTUs, increases shall not exceed 10 percent.

In determining compliance with the above limits, appropriate averaging periods may be applied provided that beneficial uses will be fully protected. Averaging periods may only be used with prior permission of the Central Valley Water Board Executive Officer.

Sampling during in-water work or during the entire duration of temporary water diversions shall be conducted in accordance with Table 3 sampling parameters.³ The sampling requirements in Table 3 shall be conducted upstream out of the influence of the Project, and approximately 300 feet downstream of the work area.

The sampling frequency and/or monitoring locations may be modified for certain projects with written approval from Central Valley Water Board staff. An In-Water Work and Diversion Water Quality Monitoring Report, as described in Attachment D, shall be submitted within two weeks on initiation of in-water construction, and every two weeks thereafter. In reporting the data, the Permittee shall arrange the data in tabular form so that the sampling locations, date, constituents, and concentrations are readily discernible. The data shall be summarized in such a manner to illustrate clearly whether the Project complies with Order requirements. The report shall include surface water sampling results, visual observations, and identification of the turbidity

³ Pollutants shall be analyzed using the analytical methods described in 40 Code of Federal Regulations Part 136; where no methods are specified for a given pollutant, the method shall be approved by Central Valley Water Board staff. Grab samples shall be taken between the surface and mid-depth and not be collected at the same time each day to get a complete representation of variations in the receiving water. A hand-held field meter may be used, provided the meter utilizes a U.S. EPA-approved algorithm/method and is calibrated and maintained in accordance with the manufacturer's instructions. A calibration and maintenance log for each meter used for monitoring shall be maintained onsite.

increase in the receiving water applicable to the natural turbidity conditions specified in the turbidity criteria in XIV.C.3.

If no sampling is required, the Permittee shall submit a written statement stating, "No sampling was required" within two weeks on initiation of in-water construction, and every two weeks thereafter.

Table 3: Sample Type and Frequency Requirements

Parameter	Unit of Measurement	Type of Sample	Minimum Frequency
Turbidity	NTU	Grab	Every 4 hours
Visible construction related pollutants ⁴	Observations	Visual Inspections	Continuous throughout the construction period

4. Post-Construction:

Visually inspect the Project site during the rainy season for one year following completion of active Project construction activities to ensure excessive erosion, stream instability, or other water quality pollution is not occurring in or downstream of the Project site. If water quality pollution is occurring, contact the Central Valley Water Board staff member overseeing the Project within three (3) working days. The Central Valley Water Board may require the submission of a Violation of Compliance with Water Quality Standards Report. Additional permits may be required to carry out any necessary site remediation.

D. Standard

1. This Order is subject to modification or revocation upon administrative or judicial review, including review and amendment pursuant to Water Code section 13330, and California Code of Regulations, title 23, Chapter 28, article 6 commencing with sections 3867-3869, inclusive. Additionally, the Central Valley Water Board reserves the right to suspend, cancel, or modify and reissue this Order, after providing notice to the Permittee, if the Central Valley Water Board determines that: the Project fails to comply with any of the conditions of this Order; or, when necessary to implement any new or revised water quality standards and implementation plans adopted or approved pursuant to the Porter-Cologne Water Quality Control Act (Water Code, section 13000 et seq.) or federal Clean Water Act section 303 (33 U.S.C. section 1313). For purposes of Clean Water Act section 401(d), the condition

⁴ Visible construction-related pollutants include oil, grease, foam, fuel, petroleum products, and construction-related, excavated, organic or earthen materials.

constitutes a limitation necessary to assure compliance with water quality standards and appropriate requirements of state law.

2. This Order is not intended and shall not be construed to apply to any activity involving a hydroelectric facility requiring a Federal Energy Regulatory Commission (FERC) license or an amendment to a FERC license, unless the pertinent certification application was filed pursuant to subsection 3855(b) of chapter 28, title 23 of the California Code of Regulations, and that application specifically identified that a FERC license or amendment to a FERC license for a hydroelectric facility was being sought.
3. This Order is conditioned upon total payment of any fee required under title 23 of the California Code of Regulations and owed by the Permittee.
4. In the event of any violation or threatened violation of the conditions of this Order, the violation or threatened violation shall be subject to any remedies, penalties, process, or sanctions as provided for under state and federal law. For purposes of Clean Water Act, section 401(d), the applicability of any state law authorizing remedies, penalties, processes, or sanctions for the violation or threatened violation constitutes a limitation necessary to assure compliance with the water quality standards and other pertinent requirements incorporated into this Order.

E. General Compliance

1. Failure to comply with any condition of this Order shall constitute a violation of the Porter-Cologne Water Quality Control Act and the Clean Water Act. The Permittee and/or discharger may then be subject to administrative and/or civil liability pursuant to Water Code section 13385.
2. Permitted actions must not cause a violation of any applicable water quality standards, including impairment of designated beneficial uses for receiving waters as adopted in the Basin Plans by any applicable Regional Water Board or any applicable State Water Board (collectively Water Boards) water quality control plan or policy. The source of any such discharge must be eliminated as soon as practicable.
3. In response to a suspected violation of any condition of this Order, the Central Valley Water Board may require the holder of this Order to furnish, under penalty of perjury, any technical or monitoring reports the Water Boards deem appropriate, provided that the burden, including costs, of the reports shall bear a reasonable relationship to the need for the reports and the benefits to be obtained from the reports. The additional monitoring requirements ensure that permitted discharges and activities comport with any applicable effluent limitations, water quality standards, and/or other appropriate requirement of state law.

4. The Permittee must, at all times, fully comply with engineering plans, specifications, and technical reports submitted to support this Order; and all subsequent submittals required as part of this Order. The conditions within this Order and Attachments supersede conflicting provisions within Permittee submittals.
5. This Order and all of its conditions contained herein continue to have full force and effect regardless of the expiration or revocation of any federal license or permit issued for the Project. For purposes of Clean Water Act, section 401(d), this condition constitutes a limitation necessary to assure compliance with the water quality standards and other pertinent requirements of state law.
6. The Permittee shall adhere to all requirements in the mitigation monitoring and reporting program (MMRP) Initial Study/Mitigated Negative Declaration, Routine Maintenance of Stream Channels and Drainage Facilities, June 2018, which is incorporated herein by reference and any additional measures as outlined in Attachment C, CEQA Findings of Fact.
7. **Construction General Permit Requirement:** The Permittee shall obtain coverage under the National Pollutant Discharge Elimination System (NPDES) General Permit for Storm Water Discharges Associated with Construction and Land Disturbance Activities (Order No. 2009-0009-DWQ; NPDES No. CAS000002), as amended, for discharges to surface waters comprised of storm water associated with construction activity, including, but not limited to, demolition, clearing, grading, excavation, and other land disturbance activities of one or more acres, or where projects disturb less than one acre but are part of a larger common plan of development that in total disturbs one or more acres.

F. Administrative

1. Signatory requirements for all document submittals required by this Order are presented in Attachment E of this Order.
2. This Order does not authorize any act which results in the taking of a threatened, endangered or candidate species or any act, which is now prohibited, or becomes prohibited in the future, under either the California Endangered Species Act (Fish & Wildlife Code, sections 2050-2097) or the federal Endangered Species Act (16 U.S.C. sections 1531-1544). If a "take" will result from any act authorized under this Order held by the Permittee, the Permittee must comply with the California Endangered Species Act and federal Endangered Species Act prior to any construction or operation of the portion of the Project that may result in a take. The Permittee is responsible for meeting all requirements of the applicable endangered species act for the Project authorized under this Order.

3. The Permittee shall grant Central Valley Water Board staff, or an authorized representative (including an authorized contractor acting as a Water Board representative), upon presentation of credentials and other documents as may be required by law, permission to:
 - a. Enter upon the Project or compensatory mitigation site(s) premises where a regulated facility or activity is located or conducted, or where records are kept.
 - b. Have access to and copy any records that are kept and are relevant to the Project or the requirements of this Order.
 - c. Inspect any facilities, equipment (including monitoring and control equipment), practices, or operations regulated or required under this Order.
 - d. Sample or monitor for the purposes of assuring Order compliance.
4. A copy of this Order shall be provided to any consultants, contractors, and subcontractors working on the Project. Copies of this Order shall remain at the Project site for the duration of this Order. The Permittee shall be responsible for work conducted by its consultants, contractors, and any subcontractors.
5. A copy of this Order must be available at the Project site(s) during construction for review by site personnel and agencies. All personnel performing work on the Project shall be familiar with the content of this Order and its posted location at the Project site.
6. **Lake or Streambed Alteration Agreement:** The Permittee shall submit a signed copy of the California Department of Fish and Wildlife's Lake or Streambed Alteration Agreement to the Central Valley Water Board immediately upon execution and prior to any discharge to waters of the state.

G. Construction

1. Dewatering

- a. The Permittee shall develop and maintain on-site a Surface Water Diversion and/or Dewatering Plan(s). The Plan(s) must be developed prior to initiation of any water diversions. The Plan(s) shall include the proposed method and duration of diversion activities and include water quality monitoring conducted, as described in section XIV.C.3, during the entire duration of dewatering and diversion activities. The Plan(s) must be consistent with this Order and must be made available to the Central Valley Water Board staff upon request.
- b. For any temporary dam or other artificial obstruction being constructed, maintained, or placed in operation, sufficient water shall at all times be allowed to pass downstream, to maintain beneficial uses of waters of the

state below the dam. Construction, dewatering, and removal of temporary cofferdams shall not violate section XIV.C.3.

- c. The temporary dam or other artificial obstruction shall only be built from clean materials such as sandbags, gravel bags, water dams, or clean/washed gravel which will cause little or no siltation. Stream flow shall be temporarily diverted using gravity flow through temporary culverts/pipes or pumped around the work site with the use of hoses.
- d. If water is present, the area must be dewatered prior to start of work.
- e. Dewatering will occur within the Project area.
- f. This Order does not allow permanent water diversion of flow from the receiving water. This Order is invalid if any water is permanently diverted as a part of the project.
- g. The Permittee shall work with the Central Valley Water Board to obtain coverage under an NPDES permit for dewatering activities that result in discharges into surface water.

4. Directional Drilling

- a. If installation or relocation of dry and/or wet utility lines is anticipated, the Permittee shall develop and implement a Dry and Wet Utility Work Plan prior to commencement of dry and wet utility construction. The Dry and Wet Utility Plan must cover all phases of the certified project that will impact waters of the state and shall be consistent with this Certification.

The Dry and Wet Utility Plan shall include the types of dry and wet utilities to be removed and installed, method and duration of activities, structure configuration, construction materials, equipment, erosion and sediment controls, and a map or drawing indicating the location(s) of dry and wet utility work, as related to any water of the state in the Project area.

Should the methodology for dry and wet utility work include directional drilling, the Dry and Wet Utility Plan shall incorporate a Directional Drilling Plan to address potential frac-outs. The Directional Drilling Plan shall include, but not be limited to, a description of directional drilling activities, dry and wet utility routes, crossing locations and methods, and other geotechnical considerations (i.e., surficial overburden deposits, clays and shales, bedrock formations, hydrogeology), and a reporting procedure should any level of discharge from a frac-out occur, regardless of the discharge size.

The Directional Drilling Plan must be stamped by a California Registered Geologist or Engineer.

The Utility Work Plan and Direction Drilling Plan must be submitted to the Central Valley Water Board staff upon request.

2. Dredging – Not Applicable

3. Fugitive Dust

Dust abatement activities can cause discharges of sediment to streams and uplands through application of water or other fluids. Dust abatement chemicals added to water can be hazardous to wildlife and, if allowed to enter streams, detrimental to water quality. Therefore, dust abatement activities shall be conducted so that sediment or dust abatement chemicals are not discharged into waters of the state. Dust abatement products or additives that are known to be detrimental to water quality or wildlife shall not be used, unless specific management needs are documented, and product-specific application plans are approved by Central Valley Water Board staff.

4. Good Site Management “Housekeeping”

- a. The Permittee shall develop and maintain onsite a project-specific Spill Prevention, Containment and Cleanup Plan outlining the practices to prevent, minimize, and/or clean up potential spills during construction of the Project. The Plan must detail the Project elements, construction equipment types and location, access and staging and construction sequence. The Plan must be made available to the Central Valley Water Board staff upon request.
- b. Refueling of equipment within the floodplain or within 300 feet of the waterway is prohibited. If critical equipment must be refueled within 300 feet of the waterway, spill prevention and countermeasures must be implemented to avoid spills. Refueling areas shall be provided with secondary containment including drip pans and/or placement of absorbent material. No hazardous materials, pesticides, fuels, lubricants, oils, hydraulic fluids, or other construction-related potentially hazardous substances should be stored within a floodplain or within 300 feet of a waterway. The Permittee must perform frequent inspections of construction equipment prior to utilizing it near surface waters to ensure leaks from the equipment are not occurring and are not a threat to water quality.
- c. All materials resulting from the Project shall be removed from the site and disposed of properly.

5. Hazardous Materials

- a. The discharge of petroleum products, any construction materials, hazardous materials, pesticides, fuels, lubricants, oils, hydraulic fluids, raw cement, concrete or the washing thereof, asphalt, paint, coating material, drilling fluids, or other substances potentially hazardous to fish and wildlife resulting from or disturbed by project-related activities is prohibited and shall be prevented from contaminating the soil and/or entering waters of

the state. In the event of a prohibited discharge, the Permittee shall comply with notification requirements in sections XIV.B.3.a and XIV.B.3.b.

- b. No wet concrete will be placed into wetland and stream channel habitat.

6. Invasive Species and Soil Borne Pathogens

Prior to arrival at the project site and prior to leaving the project site, construction equipment that may contain invasive plants and/or seeds shall be cleaned to reduce the spread of noxious weeds.

7. Post-Construction Storm Water Management – Not Applicable

8. Roads

- a. The number of access routes, number and size of staging areas, and the total area of the activity must be limited to the minimum necessary to achieve the project goal. Routes and work area boundaries must be clearly demarcated.
- b. Bridges, culverts, dip crossings, or other structures must be installed so that water and in-stream sediment flow is not impeded. Appropriate design criteria, practices and materials must be used in areas where access roads intersect waters of the state.
- c. Temporary materials placed in any water of the state must be removed as soon as construction is completed at that location, and all temporary roads must be removed or re-contoured and restored according to approved re-vegetation and restoration plans.
- d. Any structure, including but not limited to, culverts, pipes, piers, and coffer dams, placed within a stream where fish (as defined in California Fish and Game Code section 45) exist or may exist, must be designed, constructed, and maintained such that it does not constitute a barrier to upstream or downstream movement of aquatic life, or cause an avoidance reaction by fish due to impedance of their upstream or downstream movement. This includes, but is not limited to, maintaining the supply of water and maintaining flows at an appropriate depth, temperature, and velocity to facilitate upstream and downstream fish migration. If any structure results in a long-term reduction in fish movement, the discharger shall be responsible for restoration of conditions as necessary (as determined by the Water Board) to secure passage of fish across the structure.
- e. A method of containment must be used below any temporary bridge, trestle, boardwalk, and/or other stream crossing structure to prevent any debris or spills from falling into the waters of the state. Containment must be maintained and kept clean for the life of the temporary stream crossing structure.

9. Sediment Control

- a. Except for activities permitted by the United States Army Corps of Engineers under Section 404 of the Clean Water Act and/or Section 10 of the Rivers and Harbors Act, soil, silt, or other organic materials shall not be placed where such materials could pass into surface water or surface water drainage courses.
- b. Silt fencing, straw wattles, or other effective management practices must be used along the construction zone to minimize soil or sediment along the embankments from migrating into the waters of the state through the entire duration of the Project.
- c. The use of netting material (e.g., monofilament-based erosion blankets) that could trap aquatic dependent wildlife is prohibited within the Project area.

10. Special Status Species

The following special status species have been documented to occur near or within the Project area: White-tailed kite and Purple martin.

11. Stabilization/Erosion Control

- a. All areas disturbed by Project activities shall be protected from washout and erosion.
- b. Hydroseeding shall be performed with California native seed mix.

12. Storm Water

- a. During the construction phase, the Permittee must employ strategies to minimize erosion and the introduction of pollutants into storm water runoff. These strategies must include the following:
 - i. An effective combination of erosion and sediment control Best Management Practices (BMPs) must be implemented and adequately working prior to the rainy season and during all phases of construction.

H. Site Specific – Not Applicable

I. Total Maximum Daily Load (TMDL) – Not Applicable

J. Mitigation for Temporary Impacts

1. The Permittee shall restore all areas of temporary impacts, including Project site upland areas, which could result in a discharge to waters of the state to pre-construction contours and conditions upon completion of construction activities.
2. The Central Valley Water Board may extend the monitoring period beyond requirements of the restoration plan upon a determination by Executive

Officer that the performance standards have not been met or are not likely to be met within the monitoring period.

3. If restoration of temporary impacts to waters of the state is not completed within 180 days of the impacts, compensatory mitigation may be required to offset temporal loss of waters of the state.

K. Compensatory Mitigation for Permanent Impacts:

Compensatory Mitigation is for permanent physical loss and permanent ecological degradation of a water of the state.

1. Final Compensatory Mitigation Plan:

The Permittee shall provide compensatory mitigation for impacts to waters of the state in accordance with the submitted application (Compensatory Mitigation Plan) dated 20 March 2023 and incorporated herein by reference. Any deviations from, or revisions to, the Compensatory Mitigation Plan must be pre-approved by Central Valley Water Board staff. The monitoring period shall continue until the Central Valley Water Board staff determines that performance standards have been met. This may require the monitoring period to be extended.

2. Irrevocable Letter of Credit

- a. The Permittee shall establish in favor of the Central Valley Water Board, an irrevocable letter of credit in an amount sufficient to pay for the cost of the Permittee's required compensatory mitigation under this Order within 90 days of issuance of this Order. The Permittee shall prepare a draft letter of credit and submit it to the Central Valley Water Board staff for written acceptance. The letter of credit shall allow the Central Valley Water Board to immediately draw on the letter of credit if the Central Valley Water Board staff determines in its sole discretion that the Permittee has failed to meet its mitigation obligations.
- b. If the Permittee is unable to establish a letter of credit, it shall arrange a different security instrument with Central Valley Water Board staff within 90 days of issuance of this Order.
- c. The Permittee shall finalize and execute the security instrument within sixty (60) days after the Central Valley Water Board staff approves the draft security instrument. The Permittee shall have a security instrument in place until the Permittee has completed the required compensatory mitigation and achieved all performance standards.
- d. If the Permittee has not completed the required compensatory mitigation and achieved all performance standards within sixty (60) days prior to the security instrument's expiration date, the Permittee shall obtain an extension or a new security instrument. The new security instrument shall

be subject to Central Valley Water Board staff acceptance following the same procedure described in the conditions above.

3. Permittee-Responsible Compensatory Mitigation Responsibility – Not Applicable

4. Purchase of Mitigation Credits by Permittee for Compensatory Mitigation

- a. A copy of the fully executed agreement for the purchase of mitigation credits shall be provided to the Central Valley Water Board within 90 days of authorized impacts.
- b. The Permittee shall retain responsibility for providing the compensatory mitigation and long-term management until Central Valley Water Board staff has received documentation of the credit purchase and the transfer agreement between the Permittee and the seller of credits.

5. Total Required Compensatory Mitigation

- a. The Permittee is required to provide compensatory mitigation for the authorized impact to 0.02 acre of stream channel habitat and 0.002 wetland habitat by purchasing 0.05 Aquatic Resource Credits in the River Ranch Wetland Mitigation Bank.
- b. Total required Project compensatory mitigation information for permanent physical loss of area is summarized in Table 4. [Establishment (Est.), Re-establishment (Re-est.), Rehabilitation (Reh.), Enhancement (Enh.), Preservation (Pres.), Unknown].

Table 4: Total Required Project Compensatory Mitigation Quantity for Permanent Physical Loss of Area

Aquatic Resource Type	Mitigation Type	Units	Est.	Re-est.	Reh.	Enh.	Pres.	Unknown
Stream Channel	Mitigation Bank Credits	Acres		0.05				

L. Certification Deviation

- 1. Minor modifications of Project locations or predicted impacts may be necessary as a result of unforeseen field conditions, necessary engineering re-design, construction concerns, or similar reasons. Some of these prospective Project modifications may have impacts on water quality. Some modifications of Project locations or predicted impacts may qualify as Certification Deviations as set forth in Attachment F. For purposes of this Certification, a “Certification Deviation” is a Project locational or impact

modification that does not require an immediate amendment of the Order, because the Central Valley Water Board has determined that any potential water quality impacts that may result from the change are sufficiently addressed by the Order conditions and the CEQA Findings. After the termination of construction, this Order will be formally amended to reflect all authorized Certification Deviations and any resulting adjustments to the amount of water resource impacts and required compensatory mitigation amounts.

- 2.** A Project modification shall not be granted a Certification Deviation if it warrants or necessitates changes that are not addressed by the Order conditions or the CEQA environmental document such that the Project impacts are not addressed in the Project's environmental document or the conditions of this Order. In this case a supplemental environmental review and different Order will be required.

XV. Water Quality Certification

I hereby issue the Order for the Citrus Heights Bridge Preventative Maintenance Program (BMPM) Project, WDID # 5A34CR00873, certifying that as long as all of the conditions listed in this Order are met, any discharge from the referenced Project will comply with the applicable provisions of Clean Water Act sections 301 (Effluent Limitations), 302 (Water Quality Related Effluent Limitations), 303 (Water Quality Standards and Implementation Plans), 306 (National Standards of Performance), and 307 (Toxic and Pretreatment Effluent Standards).

Except insofar as may be modified by any preceding conditions, all Order actions are contingent on: (a) the discharge being limited and all proposed mitigation being completed in strict compliance with the conditions of this Order and the attachments to this Order; and, (b) compliance with all applicable requirements of Statewide Water Quality Control Plans and Policies, the Regional Water Boards' Water Quality Control Plans and Policies.

Original Signed by Anne Walters for:

Patrick Pulupa, Executive Officer
Central Valley Regional Water Quality Control Board

- Attachment A:** Project Maps
- Attachment B:** Receiving Waters, Impacts, and Mitigation Information
- Attachment C:** CEQA Findings of Facts
- Attachment D:** Report and Notification Requirements
- Attachment E:** Signatory Requirements
- Attachment F:** Certification Deviation Procedures
- Attachment G:** Compliance with Code of Federal Regulations

(This page intentionally left blank)

Attachment A – Project Maps

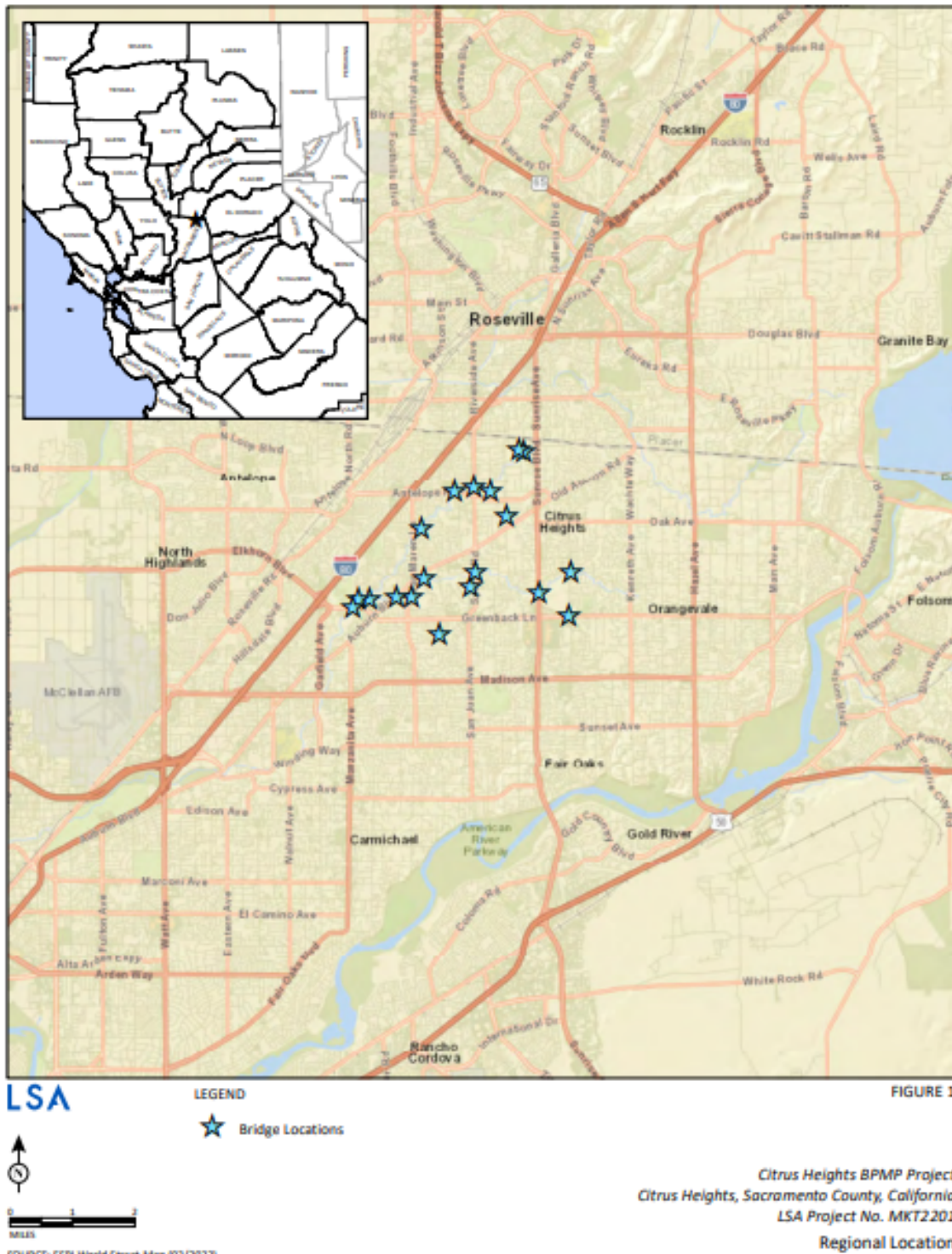


Figure 1: Project Location Map

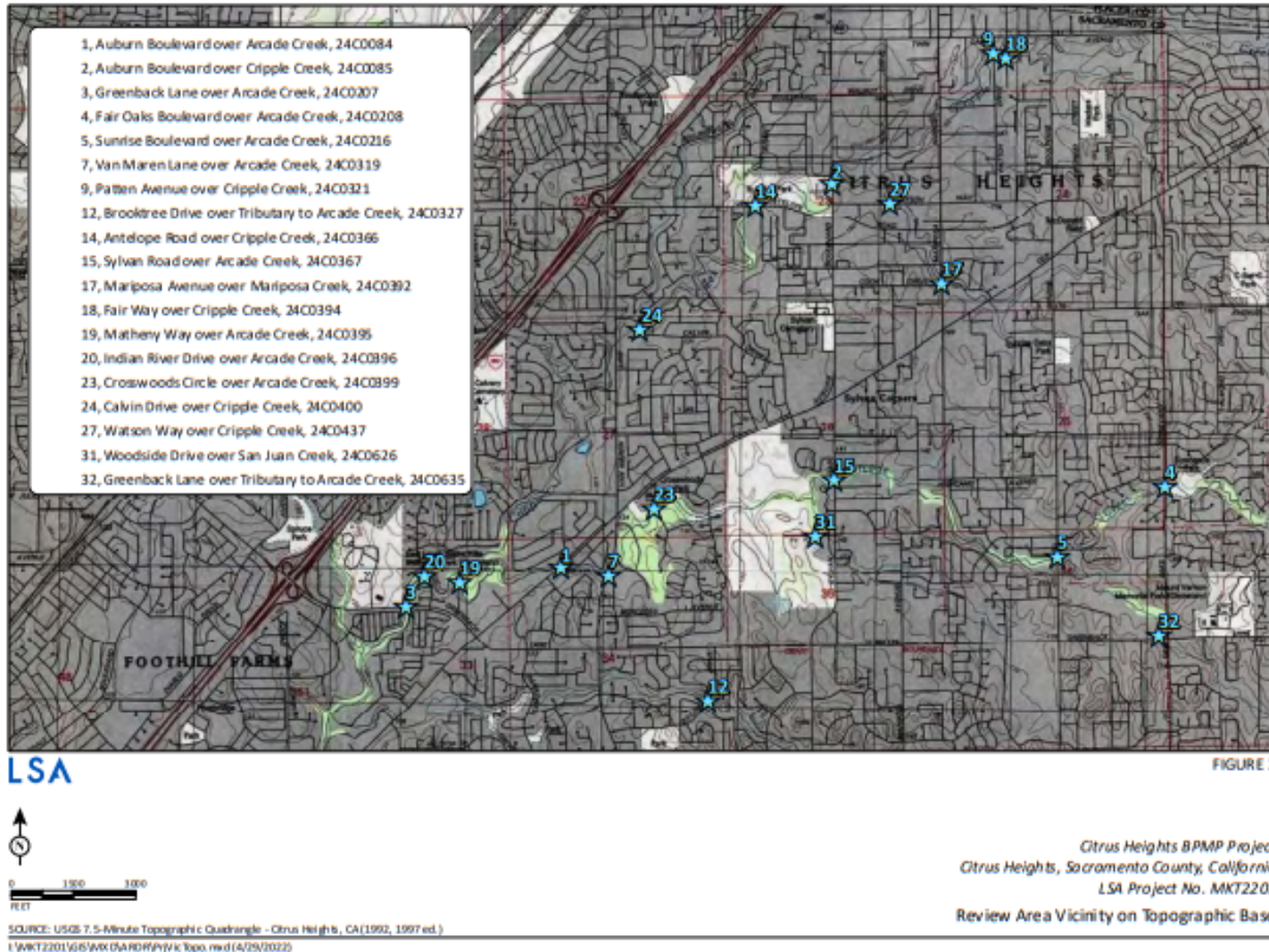
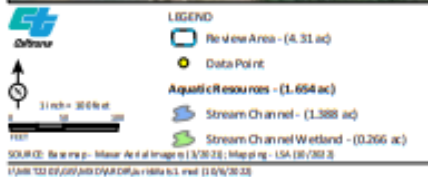


Figure 2: Bridge Location Map



Prepared: May 11, 2022
 Prepared By: Mike Trueblood (LSA)
 Revised By: Mike Trueblood (LSA) October 6, 2022

FIGURE 6
 Page 1 of 5

Citrus Heights BMPM Project
 Citrus Heights, Sacramento County California
 LSA Project No. NRT2202
 Aquatic Resources

Figure 3a: Impacted Water Location Map

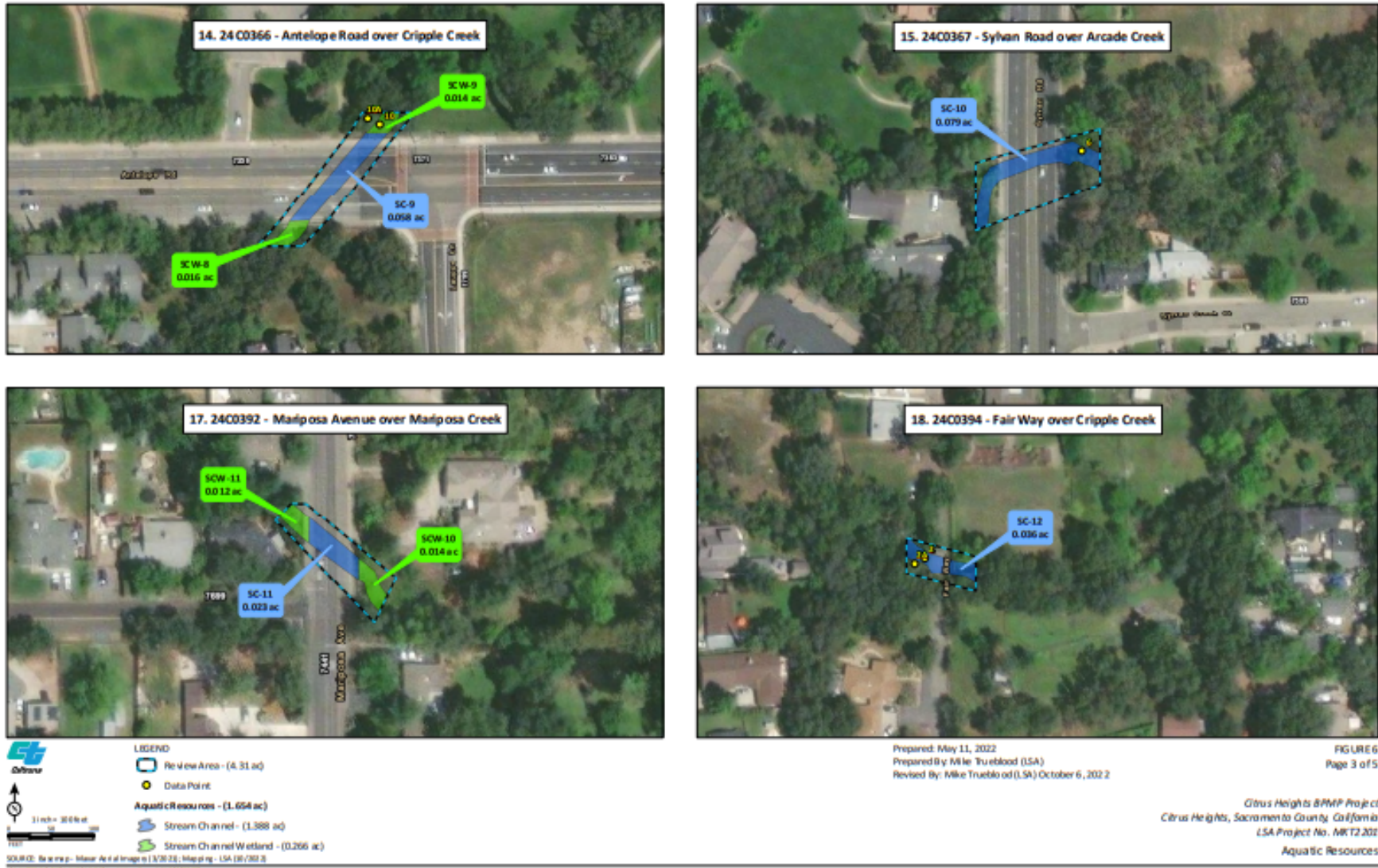


Figure 3c: Impacted Water Location Map



LEGEND

- Review Area - (4.31 ac)
- Data Point
- Aquatic Resources - (1.654 ac)**
 - Stream Channel - (1.388 ac)
 - Stream Channel Wetland - (0.266 ac)

SOURCES: Best Aerial Imagery (1/3/2022); InMap Pro - LSA (10/2022)
1/1/2022 02:00:00 PM C:\Users\jason\OneDrive\Documents\Map\10/2/2022

Prepared: May 11, 2022
 Prepared By: Mike Trueblood (LSA)
 Revised By: Mike Trueblood (LSA) October 6, 2022

FIGURE 6
 Page 4 of 5

Citrus Heights BMPM Project
 Citrus Heights, Sacramento County, California
 LSA Project No. MKT2202
 Aquatic Resources

Figure 3d: Impacted Water Location Map

(This page intentionally left blank)

Attachment B – Receiving Waters, Impacts and Mitigation Information

The following table shows the receiving waters associated with each impact site.

Table 1: Receiving Water(s) Information

Non-Federal Waters	Impact Site ID	Waterbody Name	Impacted Aquatic Resources Type	Water Board Hydrologic Units	Receiving Waters	Receiving Waters Beneficial Uses	303d Listing Pollutant	California Rapid Assessment Method (CRAM) ID
No	24C0084	Arcade Creek	Stream	514.23	Sacramento River	AGR, BIOL, COLD, IND, GWR, MIGR, REC-2, RARE, SPWN	Bifenthrin, Copper, Fipronil Sulfone, Malathion, Permethrin, Pyrethroids, Toxicity	NA
No	24C0085	Cripple Creek	Stream	514.23	Sacramento River	AGR, BIOL, COLD, IND, GWR, MIGR, REC-2, RARE, SPWN	NA	NA
No	24C0207	Arcade Creek	Stream	514.23	Sacramento River	AGR, BIOL, COLD, IND, GWR, MIGR, REC-2, RARE, SPWN	Bifenthrin, Copper, Fipronil Sulfone, Malathion, Permethrin, Pyrethroids, Toxicity	NA

Non-Federal Waters	Impact Site ID	Waterbody Name	Impacted Aquatic Resources Type	Water Board Hydrologic Units	Receiving Waters	Receiving Waters Beneficial Uses	303d Listing Pollutant	California Rapid Assessment Method (CRAM) ID
No	24C0208	Unnamed tributary to Arcade Creek	Stream	514.23	Sacramento River	AGR, BIOL, COLD, IND, GWR, MIGR, REC-2, RARE, SPWN	Bifenthrin, Copper, Fipronil Sulfone, Malathion, Permethrin, Pyrethroids, Toxicity	NA
No	24C0216	Arcade Creek	Stream	514.23	Sacramento River	AGR, BIOL, COLD, IND, GWR, MIGR, REC-2, RARE, SPWN	Bifenthrin, Copper, Fipronil Sulfone, Malathion, Permethrin, Pyrethroids, Toxicity	NA
No	24C0319	Arcade Creek	Stream	514.23	Sacramento River	AGR, BIOL, COLD, IND, GWR, MIGR, REC-2, RARE, SPWN	Bifenthrin, Copper, Fipronil Sulfone, Malathion, Permethrin, Pyrethroids, Toxicity	NA

Non-Federal Waters	Impact Site ID	Waterbody Name	Impacted Aquatic Resources Type	Water Board Hydrologic Units	Receiving Waters	Receiving Waters Beneficial Uses	303d Listing Pollutant	California Rapid Assessment Method (CRAM) ID
No	24C0321	Cripple Creek	Stream	514.23	Sacramento River	AGR, BIOL, COLD, IND, GWR, MIGR, REC-2, RARE, SPWN	NA	NA
No	24C0327	Brooktree Creek	Stream	514.23	Sacramento River	AGR, BIOL, COLD, IND, GWR, MIGR, REC-2, RARE, SPWN	NA	NA
No	24C0366	Cripple Creek	Stream	514.23	Sacramento River	AGR, BIOL, COLD, IND, GWR, MIGR, REC-2, RARE, SPWN	NA	NA
No	24C0367	Arcade Creek	Stream	514.23	Sacramento River	AGR, BIOL, COLD, IND, GWR, MIGR, REC-2, RARE, SPWN	Bifenthrin, Copper, Fipronil Sulfone, Malathion, Permethrin, Pyrethroids, Toxicity	NA
No	24C0392	Mariposa Creek	Stream	514.23	Sacramento River	AGR, BIOL, COLD, IND, GWR, MIGR, REC-2, RARE, SPWN	NA	NA

Non-Federal Waters	Impact Site ID	Waterbody Name	Impacted Aquatic Resources Type	Water Board Hydrologic Units	Receiving Waters	Receiving Waters Beneficial Uses	303d Listing Pollutant	California Rapid Assessment Method (CRAM) ID
No	24C0394	Cripple Creek	Stream	514.23	Sacramento River	AGR, BIOL, COLD, IND, GWR, MIGR, REC-2, RARE, SPWN	NA	NA
No	24C0395	Arcade Creek	Stream	514.23	Sacramento River	AGR, BIOL, COLD, IND, GWR, MIGR, REC-2, RARE, SPWN	Bifenthrin, Copper, Fipronil Sulfone, Malathion, Permethrin, Pyrethroids, Toxicity	NA
No	24C0396	Arcade Creek	Stream	514.23	Sacramento River	AGR, BIOL, COLD, IND, GWR, MIGR, REC-2, RARE, SPWN	Bifenthrin, Copper, Fipronil Sulfone, Malathion, Permethrin, Pyrethroids, Toxicity	NA

Non-Federal Waters	Impact Site ID	Waterbody Name	Impacted Aquatic Resources Type	Water Board Hydrologic Units	Receiving Waters	Receiving Waters Beneficial Uses	303d Listing Pollutant	California Rapid Assessment Method (CRAM) ID
No	24C0399	Unnamed tributary to Arcade Creek	Stream	514.23	Sacramento River	AGR, BIOL, COLD, IND, GWR, MIGR, REC-2, RARE, SPWN	Bifenthrin, Copper, Fipronil Sulfone, Malathion, Permethrin, Pyrethroids, Toxicity	NA
No	24C0400	Cripple Creek	Stream	514.23	Sacramento River	AGR, BIOL, COLD, IND, GWR, MIGR, REC-2, RARE, SPWN	NA	NA
No	24C00437	Cripple Creek	Stream	514.23	Sacramento River	AGR, BIOL, COLD, IND, GWR, MIGR, REC-2, RARE, SPWN	NA	NA
No	24C00455	Cripple Creek	Stream	514.23	Sacramento River	AGR, BIOL, COLD, IND, GWR, MIGR, REC-2, RARE, SPWN	NA	NA
No	24C0626	San Juan Creek	Stream	514.23	Sacramento River	AGR, BIOL, COLD, IND, GWR, MIGR, REC-2, RARE, SPWN	NA	NA

Non-Federal Waters	Impact Site ID	Waterbody Name	Impacted Aquatic Resources Type	Water Board Hydrologic Units	Receiving Waters	Receiving Waters Beneficial Uses	303d Listing Pollutant	California Rapid Assessment Method (CRAM) ID
No	24C0635	Unnamed tributary to Arcade Creek	Stream	514.23	Sacramento River	AGR, BIOL, COLD, IND, GWR, MIGR, REC-2, RARE, SPWN	Bifenthrin, Copper, Fipronil Sulfone, Malathion, Permethrin, Pyrethroids, Toxicity	NA

Individual Direct Impact Locations

The following tables show individual impacts.

Table 2: Individual Temporary Fill/Excavation Impact Information

Impact Site ID	Latitude	Longitude	Indirect Impact Requiring Mitigation?	Acres	Cubic Yards	Linear Feet
24C0084	38.884°	-121.313°	No	0.100		
24C0085	38.709°	-121.290°	No	0.019		
24C0207	38.681°	-121.327°	No	0.169		
24C0208	38.679°	-121.263°	No	0.016		
24C0216	38.684°	-121.272°	No	0.085		
24C0319	38.683°	-121.310°	No	0.061		
24C0321	38.717°	-121.279°	No	0.026		

Impact Site ID	Latitude	Longitude	Indirect Impact Requiring Mitigation?	Acres	Cubic Yards	Linear Feet
24C0327	38.875°	-121.301°	No	0.005		
24C0366	38.707°	-121.297°	No	0.012		
24C0367	38.689°	-121.290°	No	0.025		
24C0392	38.702°	-121.281	No	0.028		
24C0394	38.717°	-121.277°	No	0.014		
24C0395	38.683°	-121.322°	No	0.015		
24C0396	38.683°	-121.326°	No	0.026		
24C0399	38.687°	-121.301°	No	0.013		
24C0400	38.670°	-121.309°	No	0.022		
24C0437	38.706°	-121.286°	No	0.014		
24C0455	38.695°	-121.311°	No	0.015		
24C0626	38.686°	-121.292°	No	0.017		
24C0635	38.878	-121.262	No	0.012		

Table 3: Individual Permanent Fill/Excavation Impact Information

Impact Site ID	Latitude	Longitude	Indirect Impact Requiring Mitigation?	Acres	Cubic Yards	Linear Feet
24C0319	38.683°	-121.308°	No	0.004		
24C0395	38.693°	-121.322°	No	0.001		
24C0396	38.683°	-121.326°	No	0.014		

Impact Site ID	Latitude	Longitude	Indirect Impact Requiring Mitigation?	Acres	Cubic Yards	Linear Feet
24C0399	38.717°	-121.277°	No	0.003		
24C0455	38.695°	-121.311°	No	0.003		

Compensatory Mitigation Information

The following table(s) show individual compensatory mitigation information and locations.

Mitigation Bank Compensatory Mitigation Site Information

Table 4: Mitigation Bank

Mitigation Bank Name:	River Ranch Wetland Mitigation Bank
Website:	Wildlands - The Leader in Habitat Mitigation Solutions (wildlandsinc.com) https://www.wildlandsinc.com/
Mitigation Bank Contact Name:	Julie Maddox
Phone:	916-435-3555
Email:	jmaddox@heronpacific.com
Mitigation Location - County:	Sacramento
Latitude:	Unknown
Longitude:	Unknown

Table 5: Mitigation Type Information

Aquatic Resource Credit Type	Acres	Linear Feet	Number of Credits Purchased
Freshwater marsh complex	0.022		0.05

(This page is intentionally left blank)

Attachment C – CEQA Findings of Fact

A. Environmental Review

On 16 March 2018, the City of Citrus Heights, as lead agency, adopted an Initial Study/Mitigated Negative Declaration (IS/MND) (State Clearinghouse (SCH) No. 2018032040) for the Project and filed a Notice of Determination (NOD) at the SCH on 29 November 2023. The Central Valley Water Board is a responsible agency under CEQA (Public Resources Code, section 21069) and in making its determinations and findings, must presume that the City of Citrus Heights's adopted environmental document comports with the requirements of CEQA and is valid. (Public Resources Code, section 21167.3.) The Central Valley Water Board has reviewed and considered the environmental document and finds that the environmental document prepared by the City of Citrus Heights addresses the Project's water resource impacts. (California Code of Regulations, title 14, section 15096, subd. (f).) The environmental document includes the mitigation monitoring and reporting program (MMRP) developed by the City of Citrus Heights for all mitigation measures that have been adopted for the Project to reduce potential significant impacts. (Public Resources Code, section 21081.6, subd. (a)(1); California Code of Regulations, title 14, section 15074, subd. (d).)

B. Incorporation by Reference

Pursuant to CEQA, these Findings of Facts (Findings) support the issuance of this Order based on the Project IS/MND, the application for this Order, and other supplemental documentation.

All CEQA project impacts, including those discussed in subsection C below, are analyzed in detail in the Project Final IS/MND which is incorporated herein by reference. The Project IS/MND is available at: [Initial-Study-MND-RM-Stream-Channels-Drainage-Facilities \(citrusheights.net\)](https://www.citrusheights.net/DocumentCenter/View/9396/Initial-Study-MND-RM-Stream-Channels-Drainage-Facilities) (<https://www.citrusheights.net/DocumentCenter/View/9396/Initial-Study-MND-RM-Stream-Channels-Drainage-Facilities?bidId=>).

Requirements under the purview of the Central Valley Water Board in the MMRP are incorporated herein by reference.

The Permittee's application for this Order, including all supplemental information provided, are incorporated herein by reference.

C. Findings

The IS/MND describes the potential significant environmental effects to water resources that were mitigated in the IS/MND. Having considered the whole of the record, the Central Valley Water Board makes the following findings:

Mitigation measures have been required in the Project which avoid or mitigate to a less than significant level the potentially significant environmental effect as described in the IS/MND.

a.i. Potential Significant Impact:

The Project may have a substantial adverse effect, either directly or through habitat modifications, on any species identified as a candidate, sensitive, or special status species in local or regional plans, policies, or regulations, or by the California Department of Fish and Wildlife (CDFW) or U.S. Fish and Wildlife Service (USFWS).

The Project may have a substantial adverse effect on any riparian habitat or other sensitive natural community identified in local or regional plans, policies, or regulations, or by the CDFW or USFWS.

The Project may interfere substantially with the movement of any native resident or migratory fish or wildlife species or with established native resident or migratory wildlife corridors, or impede the use of native wildlife nursery sites.

HYD1.1- The Project may have a substantial adverse effect on federally protected wetlands as defined by Section 404 of the Clean Water Act (CWA) (including, but not limited to, marshes, vernal pools, coastal wetlands, etc.) through direct removal, filling hydrological interruption, or other means.

HYD2.1- Substantially alter the existing drainage pattern of the site or area, including through the alteration of the course of a stream or river, or substantially increase the rate or amount of surface runoff in a manner that would result in flooding onsite or offsite.

a.ii. Facts in Support of Finding:

Prior to beginning any maintenance work, the City maintenance supervisors and crews who would be completing the work must be trained by qualified personnel to identify and avoid harm to sensitive resources, special status species and their habitats.

The City shall conduct an education program for all persons employed or otherwise working on the project site prior to performing any work on-site. The program shall consist of a presentation from the designated biologist that includes a discussion of the biology of the habitats and species that may occur during routine maintenance. The designated biologist shall also include as part of the education program information about the distribution and habitat needs of any special-status species that may be present, legal protections for those species, penalties for violations and project-specific protective measures. Interpretation shall be provided for non-English speaking workers, and the same instruction shall be provided for any new workers prior to their performing work on-site. Upon completion of the education program, employees shall sign a form stating they attended the program and understand all protection measures.

Prior to vegetation removal or ground disturbance within Sanford's arrowhead habitat (e.g. shallow waters within creeks, canals, basins, and ponds), a 1-day presence/absence survey will be conducted by a City appointed biologist during the bloom season for Sanford's arrowhead (May – October). Presence/Absence surveys must cover all Sanford's arrowhead habitat that will be affected by the proposed maintenance activities and must positively identify all aquatic and wetland herbs within the survey area. The results of the survey will be documented in a brief survey memorandum that will be submitted to CDFW prior to maintenance activities.

Rare plant populations discovered onsite will be protected in place with orange Endangered Species Act (ESA) fencing. If rare plant populations cannot be protected in place, the City will coordinate with CDFW to develop a rare plant relocation plan or determine appropriate compensatory mitigation.

If possible, vegetation removal and ground disturbance should occur during the non-breeding season for all bird species (September 1st – January 31st).

If vegetation removal or ground disturbance is to take place during the nesting season (February 1st – August 31st) a pre-construction nesting bird survey must be conducted within 3 days prior to vegetation removal or ground disturbance. The nesting survey area will include the anticipated work area plus an approximate 500-foot buffer. All areas within 100 feet will be surveyed for nesting birds. All tall trees and structures potentially providing nesting habitat for raptors will be surveyed with high powered binoculars or a spotting scope. If a pre-construction survey is not feasible, then a full-time biological monitor may substitute for the preconstruction survey. The biological monitor will work slightly in advance of maintenance crews searching for nests and monitoring bird activity for stressful behaviors that could indicate a nearby nest. The biological monitor must remain onsite for the duration of work and have the power to halt maintenance work if evidence of nesting birds is discovered.

A 100-foot no disturbance buffer will be established around active bird nests protected by the Migratory Bird Treaty Act (MBTA) and Fish and Game Code 3503 and 3503.5. A reduced song bird buffer may be appropriate if agreed upon on a case by case basis by CDFW. Should an active raptor nest be found, an increased buffer distance may be appropriate. Raptor buffer distances will be approximately 300 feet but final buffer distances will be determined through consultation with CDFW. Should maintenance activities cause the nesting bird to vocalize, make defensive flights at intruders, get up from a brooding position, or fly off the nest, then the no disturbance buffer will be increased such that activities are far enough from the nest to stop this agitated behavior. The no disturbance buffer will remain in place until the chicks have fledged or as otherwise determined by a qualified biologist.

If there is a break in construction activity of more than 2 weeks, subsequent surveys should be conducted.

The City will avoid impacts to elderberry shrubs in a manner consistent with the City of Citrus Heights General Plan Environmental Impact Report (EIR): Mitigation Measure 4.6-2a. If maintenance activities cannot avoid impacts to elderberry shrubs, the City must initiate Consultation with the USFWS. The City will mitigate for impacts to the species consistent with the existing USFWS BO, or as may be determined via a Section 10 consultation which could include relocating elderberry shrub(s) to a USFWS approved mitigation bank and purchasing mitigation credits according to Table 1 in the Conservation Guidelines for the Valley Elderberry Longhorn Beetle (USFWS 1999).

Swallow nest removal should occur during the non-nesting season (September 1st – January 31st) after the young of the year have fledged and no nesting activity is observed. Swallow nests will not be removed until they have been inspected by a qualified biologist and determined to be inactive. During the nesting season, the City may discourage swallow nest construction by removing partially completed nests that are less than 1/3rd complete. After a nest is more than 1/3rd complete, it cannot be disturbed until a qualified biologist has determined that all nestlings have fledged and are foraging independently.

Structures will be assessed for bat occupation prior to initiation of work. The City must coordinate with CDFW prior to conducting maintenance work on bridges or structures occupied by bats. If a structure occupied by bats must be maintained, bats will be excluded prior to the pupping season (April 15th – August 31st). Bat exclusion must be conducted under the supervision of a qualified bat biologist experienced in bat exclusion. If no alternative roosting habitat (e.g. other bridges or structures) is available within 1000 feet of the maintenance area, temporary bat accommodation may be required.

HYD1.1a- The City will create or purchase compensatory mitigation for permanent impacts to jurisdictional features. Mitigation will be created by the City within City owned open space or purchased from a CDFW approved mitigation bank at a minimum 3:1 ratio (or a combination of restoration and mitigation credits). Permanent impacts are defined as actions that result in a permanent modification to wetlands, stream channels, or riparian habitats (e.g. new impervious cover, rock slope protection, placement of fill). Mitigation will be calculated based on the area of impact.

HYD2.1a- The time period for completing the work within the wetted channel of Arcade Creek, Cripple Creek, their tributaries, and all other stream systems shall be restricted to periods of low stream flow and dry weather and shall be confined to the period of May 1st to October 15th. Construction activities shall be timed with awareness of precipitation forecasts and likely increases in

stream flow. Construction activities within the stream zone shall cease until all reasonable erosion control measures, inside and outside of the stream zone, have been implemented prior to all storm events. Revegetation, restoration and erosion control work is not confined to this time period.

In addition, work within the bed, bank or channel of any stream shall be restricted to days with less than a 30% chance of rain as reported by the National Weather Service within 72 hours of the scheduled start of maintenance. All erosion control measures shall be initiated prior to all storm events. Revegetation, restoration and erosion control work is not confined to this work period.

If emergency maintenance is required, seasonal limitations do not apply. Emergency maintenance is defined as immediate emergency work necessary to protect life or property, or to restore public service facilities necessary to maintain service. The City will notify CDFW within 14 days of beginning maintenance work.

HYD2.1b- The City must prevent chemicals, paint, oil, gas, petroleum products, and other hazardous substances from contaminating the soil and/or entering waters of the U.S. and State. Any equipment operated adjacent to a stream must be checked and maintained daily to prevent leaks of the listed materials. Refueling, lubricating and washing of vehicles and equipment must occur outside of the bed, bank, or channel of any stream and must not be placed in areas where harmful materials, if spilled, can enter waters. Stationary equipment such as motors, pumps, generators, compressors, and welders located within or adjacent to the stream must be positioned over drip pans or secondary containment.

D. Determination

The Central Valley Water Board has determined that the Project, when implemented in accordance with the MMRP and the conditions in this Order, will not result in any significant adverse water resource impacts. (California Code of Regulations, title 14, section 15096, subd (h).)

(This page intentionally left blank)

Attachment D – Reports and Notification Requirements

I. Copies of this form

In order to identify your project, it is necessary to include a copy of the Project specific Cover Sheet below with your report; please retain for your records.

II. Report Submittal Instructions

A. Check the box on the Report and Notification Cover Sheet next to the report or notification you are submitting.

- **Part A Monthly Reports:** These reports will be submitted monthly until a Notice of Project Complete Letter is issued.
- **Part B (Project Status Notifications):** Used to notify the Central Valley Water Board of the status of the Project schedule that may affect Project billing.
- **Part C (Conditional Notifications and Reports):** Required on a case by case basis for accidental discharges of hazardous materials, violation of compliance with water quality standards, notification of in-water work, or other reports.

B. Sign the Report and Notification Cover Sheet and attach all information requested for the Report Type.

C. Electronic Report Submittal Instructions:

- Submit signed Report and Notification Cover Sheet and required information via email to: centralvalleysacramento@waterboards.ca.gov and cc: PeterG.Minkel@waterboards.ca.gov.
- Include in the subject line of the email:
ATTN: Peter Minkel; Project Name; and WDID No. 5A34CR00873.

III. Definition of Reporting Terms

A. Active Discharge Period:

The active discharge period begins with the effective date of this Order and ends on the date that the Permittee receives a Notice of Completion of Discharges Letter or, if no post-construction monitoring is required, a Notice of Project Complete Letter. The Active Discharge Period includes all elements of the Project including site construction and restoration, and any Permittee responsible compensatory mitigation construction.

B. Request for Notice of Completion of Discharges Letter:

This request by the Permittee to the Central Valley Water Board staff pertains to projects that have post construction monitoring requirements, e.g. if site restoration was required to be monitored for 5 years following construction. Central Valley Water Board staff will review the request and send a Completion of Discharges Letter to the Permittee upon approval. This letter will initiate the post-discharge monitoring period.

C. Request for Notice of Project Complete Letter:

This request by the Permittee to the Central Valley Water Board staff pertains to projects that either have completed post-construction monitoring and achieved performance standards or have no post-construction monitoring requirements, and no further Project activities are planned. Central Valley Water Board staff will review the request and send a Project Complete Letter to the Permittee upon approval. Termination of annual invoicing of fees will correspond with the date of this letter.

D. Post-Discharge Monitoring Period:

The post-discharge monitoring period begins on the date of the Notice of Completion of Discharges Letter and ends on the date of the Notice of Project Complete Letter issued by the Central Valley Water Board staff. The Post-Discharge Monitoring Period includes continued water quality monitoring or compensatory mitigation monitoring.

E. Effective Date:

13 December 2023

IV. Map/Photo Documentation Information

When submitting maps or photos, please use the following formats.

A. Map Format Information:

Preferred map formats of at least 1:24000 (1" = 2000') detail (listed in order of preference):

- **GIS shapefiles:** The shapefiles must depict the boundaries of all project areas and extent of aquatic resources impacted. Each shape should be attributed with the extent/type of aquatic resources impacted. Features and boundaries should be accurate to within 33 feet (10 meters). Identify datum/projection used and if possible, provide map with a North American Datum of 1983 (NAD83) in the California Teale Albers projection in feet.
- **Google KML files** saved from Google Maps: My Maps or Google Earth Pro. Maps must show the boundaries of all project areas and extent/type of aquatic resources impacted. Include URL(s) of maps. If this format is used include a spreadsheet with the object ID and attributed with the extent/type of aquatic resources impacted.
- **Other electronic format** (CAD or illustration format) that provides a context for location (inclusion of landmarks, known structures, geographic coordinates, or USGS DRG or DOQQ). Maps must show the boundaries of all project areas and extent/type of aquatic resources impacted. If this format is used include a spreadsheet with the object ID and attributed with the extent/type of aquatic resources impacted.
- Aquatic resource maps marked on paper **USGS 7.5-minute topographic maps** or **Digital Orthophoto Quarter Quads (DOQQ)** printouts. Maps must show the boundaries of all project areas and extent/type of aquatic resources impacted. If this format is used include a spreadsheet with the object ID and attributed with the extent/type of aquatic resources impacted.

B. Photo-Documentation:

Include a unique identifier, date stamp, written description of photo details, and latitude/longitude (in decimal degrees) or map indicating location of photo. Successive photos should be taken from the same vantage point to compare pre/post construction conditions.

V. Report and Notification Cover Sheet

Project: Citrus Heights Bridge Preventative Maintenance Program (BMPM) Project

Permittee: City of Citrus Heights

WDID: 5A34CR00873

Reg. Meas. ID: 452354

Place ID: 887858

Order Effective Date: 13 December 2023

Order Expiration Date: 12 December 2028

VI. Report Type Submitted

A. Part A – Project Reporting

Report Type 1 Monthly Report

Report Type 2 Annual Report – Not Applicable

B. Part B – Project Status Notifications

Report Type 3 Commencement of Construction

Report Type 4 Request for Notice of Completion of Discharges Letter

Report Type 5 Request for Notice of Project Complete Letter

C. Part C – Conditional Notifications and Reports

Report Type 6 Accidental Discharge of Hazardous Material Report

Report Type 7 Violation of Compliance with Water Quality Standards Report

Report Type 8 In-Water Work/Diversions Water Quality Monitoring Report

Report Type 9 Modifications to Project Report

Report Type 10 Transfer of Property Ownership Report

Report Type 11 Transfer of Long-Term BMP Maintenance Report

“I certify under penalty of law that I have personally examined and am familiar with the information submitted in this document and all attachments and that, based on my inquiry of those individuals immediately responsible for obtaining the information, I believe that the information is true, accurate, and complete. I am aware that there are significant penalties for submitting false information, including the possibility of fine and imprisonment.”

Print Name¹

Affiliation and Job Title

Signature

Date

¹STATEMENT OF AUTHORIZATION (include if authorization has changed since application was submitted)

I hereby authorize _____ to act in my behalf as my representative in the submittal of this report, and to furnish upon request, supplemental information in support of this submittal.

Permittee's Signature

Date

***This Report and Notification Cover Sheet must be signed by the Permittee or a duly authorized representative and included with all written submittals.**

A. Part A – Project Reporting

1. Report Type 1 - Monthly Report

- a. Report Purpose** - Notifies Central Valley Water Board staff of the Project status and environmental compliance activities on a monthly basis.
- b. When to Submit** - On the 15th day of each month after the submittal of the Commencement of Construction Notification until a Notice of Project Complete Letter is issued to the Permittee.
- c. Report Contents** -
 - i. Construction Summary
Describe Project progress and schedule including initial ground disturbance, site clearing and grubbing, road construction, site construction, and the implementation status of construction storm water Best Management Practices (BMPs). Best Management Practices (BMPs) is a term used to describe a type of water pollution or environmental control. If construction has not started, provide estimated start date.
 - ii. Event Summary
Describe distinct Project activities and occurrences, including environmental monitoring, surveys, and inspections.
 - iii. Photo Summary
Provide photos of Project activities. For each photo, include a unique site identifier, date stamp, written description of photo details, and latitude/longitude (in decimal degrees) or map indicating location of photo. Successive photos should be taken from the same vantage point to compare pre/post construction conditions.
 - iv. Compliance Summary
 - List name and organization of environmental surveyors, monitors, and inspectors involved with monitoring environmental compliance for the reporting period.
 - List associated monitoring reports for the reporting period.
 - Summarize observed incidences of non-compliance, compliance issues, minor problems, or occurrences.
 - Describe each observed incidence in detail. List monitor name and organization, date, location, type of incident, corrective action taken (if any), status, and resolution.

2. Report Type 2 - Annual Report – Not Applicable

B. Part B – Project Status Notifications

1. Report Type 3 - Commencement of Construction

- a. Report Purpose** - Notify Central Valley Water Board staff prior to the start of construction.
- b. When to Submit** - Must be received at least seven (7) days prior to start of initial ground disturbance activities.
- c. Report Contents** -
 - i. Date of commencement of construction.
 - ii. Anticipated date when discharges to waters of the state will occur.
 - iii. Project schedule milestones including a schedule for onsite compensatory mitigation, if applicable.
 - iv. Construction Storm Water General Permit WDID No.
 - v. Proof of purchase of compensatory mitigation for permanent impacts from the mitigation bank or in-lieu fee program.

2. Report Type 4 - Request for Notice of Completion of Discharges Letter

- a. Report Purpose** - Notify Central Valley Water Board staff that post-construction monitoring is required and that active Project construction, including any mitigation and permittee responsible compensatory mitigation, is complete.
- b. When to Submit** - Must be received by Central Valley Water Board staff within thirty (30) days following completion of all Project construction activities.
- c. Report Contents** -
 - i. Status of storm water Notice of Termination(s), if applicable.
 - ii. Status of post-construction storm water BMP installation.
 - iii. Pre- and post-photo documentation of all Project activity sites where the discharge of dredge and/or fill/excavation was authorized.
 - iv. Summary of Certification Deviation discharge quantities compared to initial authorized impacts to waters of the state, if applicable.
 - v. An updated monitoring schedule for mitigation for temporary impacts to waters of the state and permittee responsible compensatory mitigation during the post-discharge monitoring period, if applicable.

3. Report Type 5 - Request for Notice of Project Complete Letter

- a. Report Purpose** - Notify Central Valley Water Board staff that construction and/or any post-construction monitoring is complete, or is not required, and no further Project activity is planned.
- b. When to Submit** - Must be received by Central Valley Water Board staff within thirty (30) days following completion of all Project activities.
- c. Report Contents** -
 - i. Part A: Mitigation for Temporary Impacts
 - 1) A report establishing that the performance standards outlined in the restoration plan have been met for Project site upland areas of temporary disturbance which could result in a discharge to waters of the state.
 - 2) A report establishing that the performance standards outlined in the restoration plan have been met for restored areas of temporary impacts to waters of the state. Pre- and post-photo documentation of all restoration sites.
 - ii. Part B: Permittee Responsible Compensatory Mitigation
 - 1) A report establishing that the performance standards outlined in the compensatory mitigation plan have been met.
 - 2) Status on the implementation of the long-term maintenance and management plan and funding of endowment.
 - 3) Pre- and post-photo documentation of all compensatory mitigation sites.
 - 4) Final maps of all compensatory mitigation areas (including buffers).
 - iii. Part C: Post-Construction Storm Water BMPs
 - 1) Date of storm water Notice of Termination(s), if applicable.
 - 2) Report status and functionality of all post-construction BMPs.
 - 3) Dates and report of visual post-construction inspection during the rainy season as indicated in XIV.C.4.

C. Part C – Conditional Notifications and Reports

1. Report Type 6 - Accidental Discharge of Hazardous Material Report

- a. Report Purpose** - Notifies Central Valley Water Board staff that an accidental discharge of hazardous material has occurred.
- b. When to Submit** - Within five (5) working days of notification to the Central Valley Water Board of an accidental discharge. Continue reporting as required by Central Valley Water Board staff.

c. Report Contents -

- i. The report shall include the OES Incident/Assessment Form, a full description and map of the accidental discharge incident (i.e. location, time and date, source, discharge constituent and quantity, aerial extent, and photo documentation). If applicable, the OES Written Follow-Up Report may be substituted.
- ii. If applicable, any required sampling data, a full description of the sampling methods including frequency/dates and times of sampling, equipment, locations of sampling sites.
- iii. Locations and construction specifications of any barriers, including silt curtains or diverting structures, and any associated trenching or anchoring.

2. Report Type 7 - Violation of Compliance with Water Quality Standards Report

- a. **Report Purpose** - Notifies Central Valley Water Board staff that a violation of compliance with water quality standards has occurred.
- b. **When to Submit** - The Permittee shall report any event that causes a violation of water quality standards within three (3) working days of the noncompliance event notification to Central Valley Water Board staff.
- c. **Report Contents** - The report shall include: the cause; the location shown on a map; and the period of the noncompliance including exact dates and times. If the noncompliance has not been corrected, include: the anticipated time it is expected to continue; the steps taken or planned to reduce, eliminate, and prevent reoccurrence of the noncompliance; and any monitoring results if required by Central Valley Water Board staff.

3. Report Type 8 - In-Water Work and Diversions Water Quality Monitoring Report

- a. **Report Purpose** - Notifies Central Valley Water Board staff of the start and completion of in-water work. Reports the sampling results during in-water work and during the entire duration of temporary surface water diversions.
- b. **When to Submit** – At least forty-eight (48) hours prior to the start of in-water work. Within three (3) working days following the completion of in-water work. Surface water monitoring reports to be submitted two (2) weeks on initiation of in-water construction and during entire duration of temporary surface water diversions. Continue reporting in accordance with the approved water quality monitoring plan or as indicated in XIV.C.3.
- c. **Report Contents** - As required by the approved water quality monitoring plan or as indicated in XIV.C.3.

4. Report Type 9 - Modifications to Project Report

- a. **Report Purpose** - Notifies Central Valley Water Board staff if the Project, as described in the application materials, is altered in any way or by the imposition of subsequent permit conditions by any local, state or federal regulatory authority.
- b. **When to Submit** - If Project implementation as described in the application materials is altered in any way or by the imposition of subsequent permit conditions by any local, state or federal regulatory authority.
- c. **Report Contents** - A description and location of any alterations to Project implementation. Identification of any Project modifications that will interfere with the Permittee's compliance with the Order.

5. Report Type 10 - Transfer of Property Ownership Report

- a. **Report Purpose** - Notifies Central Valley Water Board staff of change in ownership of the Project or Permittee-responsible mitigation area.
- b. **When to Submit** - At least 10 working days prior to the transfer of ownership.
- c. **Report Contents** -
 - i. A statement that the Permittee has provided the purchaser with a copy of this Order and that the purchaser understands and accepts:
 - 1) the Order's requirements and the obligation to implement them or be subject to administrative and/or civil liability for failure to do so; and
 - 2) responsibility for compliance with any long-term BMP maintenance plan requirements in this Order. Best Management Practices (BMPs) is a term used to describe a type of water pollution or environmental control.
 - ii. A statement that the Permittee has informed the purchaser to submit a written request to the Central Valley Water Board to be named as the permittee in a revised order.

6. Report Type 11 - Transfer of Long-Term BMP Maintenance Report

- a. **Report Purpose** - Notifies Central Valley Water Board staff of transfer of long-term BMP maintenance responsibility.
- b. **When to Submit** - At least 10 working days prior to the transfer of BMP maintenance responsibility.

- c. **Report Contents** - A copy of the legal document transferring maintenance responsibility of post-construction BMPs.

(This page intentionally left blank)

Attachment E – Signatory Requirements

All documents submitted in compliance with this Order shall meet the following signatory requirements:

- A.** All applications, reports, or information submitted to the Central Valley Water Quality Control Board (Central Valley Water Board) must be signed and certified as follows:
 - 1.** For a corporation, by a responsible corporate officer of at least the level of vice-president.
 - 2.** For a partnership or sole proprietorship, by a general partner or proprietor, respectively.
 - 3.** For a municipality, or a state, federal, or other public agency, by either a principal executive officer or ranking elected official.

- B.** A duly authorized representative of a person designated in items 1.a through 1.c above may sign documents if:
 - 1.** The authorization is made in writing by a person described in items 1.a through 1.c above.
 - 2.** The authorization specifies either an individual or position having responsibility for the overall operation of the regulated activity.
 - 3.** The written authorization is submitted to the Central Valley Water Board Staff Contact prior to submitting any documents listed in item 1 above.

- C.** Any person signing a document under this section shall make the following certification:

“I certify under penalty of law that I have personally examined and am familiar with the information submitted in this document and all attachments and that, based on my inquiry of those individuals immediately responsible for obtaining the information, I believe that the information is true, accurate, and complete. I am aware that there are significant penalties for submitting false information, including the possibility of fine and imprisonment.”

(This page intentionally left blank)

Attachment F – Certification Deviation Procedures

I. Introduction

These procedures are put into place to preclude the need for Order amendments for minor changes in the Project routing or location. Minor changes or modifications in project activities are often required by the Permittee following start of construction. These deviations may potentially increase or decrease impacts to waters of the state. In such cases, a Certification Deviation, as defined in Section XIV.L of the Order, may be requested by the Permittee as set forth below:

II. Process Steps

A. Who may apply:

The Permittee or the Permittee's duly authorized representative or agent (hereinafter, "Permittee") for this Order.

B. How to apply:

By letter or email to the Water Quality Certification staff designated as the contact for this Order.

C. Certification Deviation Request:

The Permittee will request verification from the Central Valley Water Board staff that the project change qualifies as a Certification Deviation, as opposed to requiring an amendment to the Order. The request should:

1. Describe the Project change or modification:
 - a. Proposed activity description and purpose;
 - b. Why the proposed activity is considered minor in terms of impacts to waters of the state;
 - c. How the Project activity is currently addressed in the Order; and,
 - d. Why a Certification Deviation is necessary for the Project.
2. Describe location (latitude/longitude coordinates), the date(s) it will occur, as well as associated impact information (i.e., temporary or permanent, federal or non-federal jurisdiction, water body name/type, estimated impact area, etc.) and minimization measures to be implemented.
3. Provide all updated environmental survey information for the new impact area.
4. Provide a map that includes the activity boundaries with photos of the site.
5. Provide verification of any mitigation needed according to the Order conditions.
6. Provide verification from the CEQA Lead Agency that the proposed changes or modifications do not trigger the need for a subsequent environmental

document, an addendum to the environmental document, or a supplemental EIR. (Cal. Code Regs., tit. 14, §§ 15162-15164.)

D. Post-Discharge Certification Deviation Reporting:

1. Within 30 calendar days of completing the approved Certification Deviation activity, the Permittee will provide a post-discharge activity report that includes the following information:
 - a. Activity description and purpose;
 - b. Activity location, start date, and completion date;
 - c. Erosion control and pollution prevention measures applied;
 - d. The net change in impact area by water body type(s) in acres, linear feet and cubic yards;
 - e. Mitigation plan, if applicable; and,
 - f. Map of activity location and boundaries; post-construction photos.

E. Annual Summary Deviation Report:

1. Until a Notice of Completion of Discharges Letter or Notice of Project Complete Letter is issued, include in the Annual Project Report (see Construction Notification and Reporting attachment) a compilation of all Certification Deviation activities through the reporting period with the following information:
 - a. Site name(s);
 - b. Date(s) of Certification Deviation approval;
 - c. Location(s) of authorized activities;
 - d. Impact area(s) by water body type prior to activity in acres, linear feet and cubic yards, as originally authorized in the Order;
 - e. Actual impact area(s) by water body type in, acres, linear feet and cubic yards, due to Certification Deviation activity(ies);
 - f. The net change in impact area by water body type(s) in acres, linear feet and cubic yards; and
 - g. Mitigation to be provided (approved mitigation ratio and amount).

(This page is intentionally left blank)

**Attachment G - Compliance with Code of Federal Regulations,
Title 40, Section 121.7, Subdivision (d)**

The purpose of this Attachment is to comply with Code of Federal Regulations, title 40, section 121.7, subdivision (d), which requires all certification conditions to provide an explanation of why the condition is necessary to assure that any discharge authorized under the certification will comply with water quality requirements and a citation to federal, state, or tribal law that authorizes the condition. This Attachment uses the same organizational structure as Section XIV of the Order, and the statements below correspond with the conditions set forth in Section XIV. The other Order Sections are not “conditions” as used in Code of Federal Regulations, title 40, section 121.7.

I. General Justification for Section XIV Conditions

Pursuant to Clean Water Act section 401 and California Code of Regulations, title 23, section 3859, subdivision (a), the Central Valley Water Board, when issuing water quality certifications, may set forth conditions to ensure compliance with applicable water quality standards and other appropriate requirements of state law. Under California Water Code section 13160, the State Water Resources Control Board is authorized to issue water quality certifications under the Clean Water Act and has delegated this authority to the executive officers of the regional water quality controls boards for projects within the executive officer’s region of jurisdiction. (California Code of Regulations, title 23, section 3838.)

The conditions within the Order are generally required pursuant to the Central Valley Water Board’s Water Quality Control Plan for the Sacramento River and San Joaquin River Basins, Fifth Edition, May 2018 (Basin Plan), which was adopted and is periodically revised pursuant to Water Code section 13240. The Basin Plan includes water quality standards, which consist of existing and potential beneficial uses of waters of the state, water quality objectives to protect those uses, and the state and federal antidegradation policies. For instance, the Basin Plan includes water quality objectives for chemical constituents, oil and grease, pH, sediment, suspended material, toxicity and turbidity, which ensure protection of beneficial uses.

The State Water Board’s Antidegradation Policy, “Statement of Policy with Respect to Maintaining High Quality Waters in California,” Resolution No. 68-16, requires that the quality of existing high-quality water be maintained unless any change will be consistent with the maximum benefit to the people of the state, will not unreasonably affect present or anticipated future beneficial uses of such water, and will not result in water quality less than that prescribed in water quality control plans or policies. The Antidegradation Policy further requires best practicable treatment or control of the discharge necessary to assure that pollution or nuisance will not occur and the highest water quality consistent with maximum benefit to the people of the state will be maintained. The Basin Plan incorporates this Policy. The state Antidegradation

Policy incorporates the federal Antidegradation Policy (40 C.F.R. section 131.12 (a)(1)), which requires "[e]xisting instream water uses and the level of water quality necessary to protect the existing uses shall be maintained and protected."

The State Wetland Definition and Procedures for Discharges of Dredged or Fill Material to Waters of the State (Dredge or Fill Procedures), adopted pursuant to Water Code sections 13140 and 13170, authorize approval of dredge or fill projects only if the demonstrations set forth in Section IV.B.1 of the Dredge or Fill Procedures have been satisfied.

California Code of Regulations, title 23, sections 3830 et seq. set forth state regulations pertaining to water quality certifications. In particular, section 3856 sets forth information that must be included in water quality certification requests, and section 3860 sets forth standard conditions that shall be included in all water quality certification actions.

Finally, Water Code sections 13267 and 13383 authorize the regional and state boards to establish monitoring and reporting requirements for persons discharging or proposing to discharge waste.

II. Specific Justification for Section XIV Conditions

A. Authorization

Authorization under the Order is granted based on the application submitted. The Permittee is required to detail the scope of project impacts in a complete application pursuant to California Code of Regulations, title 23, section 3856, subdivision (h). Pursuant to Water Code section 13260, subdivision (c), each person discharging waste, or proposing to discharge waste shall file a report of waste discharge relative to any material change or proposed change in the character, location, or volume of the discharge. Pursuant to Water Code section 13264, subdivision (a), the Permittee is prohibited from initiating the discharge of new wastes, or making material changes to the character, volume, and timing of waste discharges authorized herein without filing a report required by Water Code section 13260 or its equivalent for certification actions under California Code of Regulations, title 23, section 3856.

B. Reporting and Notification Requirements

1. Project Reporting

2. Project Status Notifications

The reporting and notification conditions under Sections B.1 and B.2 are required to provide the Central Valley Water Board necessary project information and oversight to ensure project discharges are complying with applicable Basin Plan requirements. These monitoring and reporting requirements are consistent with the Central Valley Water Board's authority to

investigate the quality of any waters of the state and require necessary monitoring and reporting pursuant to Water Code sections 13267 and 13383. Water Code section 13267 authorizes the regional boards to require any person who has discharged, discharges, or is suspected of having discharged or discharging, or who proposes to discharge waste to provide technical or monitoring program reports required by the regional board. Water Code section 13383 authorizes the regional boards to establish monitoring, inspection, entry, reporting, and other recordkeeping requirements, as authorized by Water Code section 13160, for any person who discharges, or proposes to discharge, to navigable waters.

3. Conditional Notifications and Reports

a. Accidental Discharges of Hazardous Materials

Conditions under Section B.3.a related to notification and reporting requirements in the event of an accidental discharge of hazardous materials are required pursuant to section 13271 of the Water Code, which requires immediate notification of the Office of Emergency Services of the discharge in accordance with the spill reporting provision of the state toxic disaster contingency plan adopted pursuant to Article 3.7 (commencing with Section 8574.16) of Chapter 7 of Division 1 of Title 2 of the Government Code. "Hazardous materials" is defined under Health and Safety Code section 25501. These reports related to accidental discharges ensure that corrective actions, if any, that are necessary to minimize the impact or clean up such discharges can be taken as soon as possible.

b. Violation of Compliance with Water Quality Standards

c. In-Water work and Diversions

Conditions under Section B.3.b and B.3.c related to monitoring and reporting on water quality standard compliance and in-water work and diversions are required to provide the Central Valley Water Board necessary project information and oversight to ensure project discharges are complying with applicable water quality objectives under the Basin Plan. These monitoring and reporting requirements are consistent with the Central Valley Water Board's authority to investigate the quality of any waters of the state and require necessary monitoring and reporting pursuant to Water Code sections 13267 and 13383. Water Code section 13267 authorizes the regional boards to require any person who has discharged, discharges, or is suspected of having discharged or discharging, or who proposes to discharge waste to provide technical or monitoring program reports required by the regional board. Water Code section 13383 authorizes the regional boards to establish monitoring, inspection, entry, reporting, and other recordkeeping requirements, as

authorized by Water Code section 13160, for any person who discharges, or proposes to discharge, to navigable waters.

d. Modifications to Project

Authorization under this Order is granted based on the application and supporting information submitted. Conditions under Section B.3.d are necessary to ensure that if there are modifications to the project, that the Order requirements remain applicable. The Permittee is required to detail the scope of project impacts in a complete application pursuant to California Code of Regulations, title 23, section 3856, subdivision (h). Pursuant to Water Code section 13260, subdivision (c), each person discharging waste, or proposing to discharge waste shall file a report of waste discharge relative to any material change or proposed change in the character, location, or volume of the discharge. Pursuant to Water Code section 13264, subdivision (a), the Permittee is prohibited from initiating the discharge of new wastes, or making material changes to the character, volume, and timing of waste discharges authorized herein without filing a report required by Water Code section 13260 or its equivalent for certification actions under California Code of Regulations, title 23, section 3856.

e. Transfer of Property Ownership

f. Transfer of Long-Term BMP Maintenance

Authorization under this Order is granted based on the application information submitted, including identification of the legally responsible party. Conditions under Sections B.3.e and B.3.f are necessary to confirm whether the new owner wishes to assume legal responsibility for compliance with this Order. If not, the original discharger remains responsible for compliance with this Order. Pursuant to Water Code section 13260, subdivision (c), each person discharging waste, or proposing to discharge waste shall file a report of waste discharge relative to any material change or proposed change in the character, location, or volume of the discharge. Pursuant to Water Code section 13264, subdivision (a), the Permittee is prohibited from initiating the discharge of new wastes, or making material changes to the character, volume, and timing of waste discharges authorized herein without filing a report required by Water Code section 13260 or its equivalent for certification actions under California Code of Regulations, title 23, section 3856.

C. Water Quality Monitoring

Conditions under Section C related to water quality monitoring are required to confirm that best management practices required under this Order are sufficient to protect beneficial uses and to comply with water quality objectives to protect

those uses under the Basin Plan. Applicable water quality objectives and beneficial uses are identified in the Order. These monitoring requirements are consistent with the Central Valley Water Board's authority to investigate the quality of any waters of the state and require necessary monitoring and reporting pursuant to Water Code sections 13267 and 13383. Water Code section 13267 authorizes the regional boards to require any person who has discharged, discharges, or is suspected of having discharged or discharging, or who proposes to discharge waste to provide technical or monitoring program reports required by the regional board. Water Code section 13383 authorizes the regional boards to establish monitoring, inspection, entry, reporting, and other recordkeeping requirements, as authorized by Water Code section 13160, for any person who discharges, or proposes to discharge, to navigable waters.

D. Standard

1. This Order is subject to modification or revocation

This is a standard condition that "shall be included as conditions of all water quality certification actions" pursuant to California Code of Regulations, title 23, section 3860(a). This condition places the permittee on notice that the certification action may be modified or revoked following administrative or judicial review.

2. This Order is not intended and shall not be construed to apply to any activity involving a hydroelectric facility

This is a standard condition that "shall be included as conditions of all water quality certification actions" pursuant to California Code of Regulations, title 23, section 3860(b). This condition clarifies the scope of the certification's application.

3. This Order is conditioned upon total payment of any fee

This is a standard condition that "shall be included as conditions of all water quality certification actions" pursuant to California Code of Regulations, title 23, section 3860(c). This fee requirement condition is also required pursuant to California Code of Regulations, section 3833(b).

E. General Compliance

1. Failure to comply with any condition of this Order

The condition under Section E.1 places the Permittee on notice of any violations of Order requirements. Pursuant to Water Code section 13385, subdivision (a)(2), a person who violates any water quality certification issued pursuant to Water Code section 13160 shall be liable civilly.

2. Permitted actions must not cause a violation of any applicable water quality standards

Conditions under Section E.2 related to compliance with water quality objectives and designated beneficial uses are required pursuant to the Central Valley Water Board's Basin Plan. The Basin Plan's water quality standards consist of existing and potential beneficial uses of waters of the state, water quality objectives to protect those uses, and the state and federal antidegradation policies. The Antidegradation Policy requires that the quality of existing high-quality water be maintained unless any change will be consistent with the maximum benefit to the people of the state, will not unreasonably affect present or anticipated future beneficial uses of such water, and will not result in water quality less than that prescribed in water quality control plans or policies. The Antidegradation Policy further requires best practicable treatment or control of the discharge necessary to assure that pollution or nuisance will not occur and the highest water quality consistent with maximum benefit to the people of the state will be maintained. Applicable beneficial uses and water quality objectives to protect those uses include the Chemical Constituents (Basin Plan, Section 3.1.3), Oil and Grease (Basin Plan, Section 3.1.10), pH (Basin Plan, Section 3.1.11), Sediment (Basin Plan, 3.1.15), Suspended Material (3.1.17), Toxicity (Basin Plan, 3.1.20), and Turbidity (Basin Plan, Section 3.1.21) water quality objectives.

3. In response to a suspected violation of any condition of this Order, the Central Valley Water Board may require

Conditions under Section E.3 related to monitoring and reporting are required to provide the Central Valley Water Board necessary project information and oversight to ensure project discharges are complying with applicable Basin Plan requirements. These monitoring and reporting requirements are consistent with the Central Valley Water Board's authority to investigate the quality of any waters of the state and require necessary monitoring and reporting pursuant to Water Code sections 13267 and 13383. Water Code section 13267 authorizes the regional boards to require any person who has discharged, discharges, or is suspected of having discharged or discharging, or who proposes to discharge waste to provide technical or monitoring program reports required by the regional board. Technical supports submitted pursuant to Water Code section 13267 are required to be submitted under penalty of perjury. Water Code section 13383 authorizes the regional boards to establish monitoring, inspection, entry, reporting, and other recordkeeping requirements, as authorized by Water Code section 13160, for any person who discharges, or proposes to discharge, to navigable waters.

4. The Permittee must, at all times, fully comply with engineering plans, specifications, and technical reports

Authorization under the Order is granted based on the application and supporting information submitted. The Permittee is required to detail the project description in a complete application pursuant to California Code of Regulations, title 23, section 3856, subdivision (h). Pursuant to Water Code section 13260, subdivision (c), each person discharging waste, or proposing to discharge waste shall file a report of waste discharge relative to any material change or proposed change in the character, location, or volume of the discharge. Pursuant to Water Code section 13264, subdivision (a), the Permittee is prohibited from initiating the discharge of new wastes, or making material changes to the character, volume, and timing of waste discharges authorized herein without filing a report required by Water Code section 13260 or its equivalent for certification actions under California Code of Regulations, title 23, section 3856. Finally, compliance with conditions of the Order ensures that the Project will comply with all water quality standards and other appropriate requirements as detailed herein. (California Code of Regulations, title 23, section 3859, subdivision (a).)

5. This Order and all of its conditions herein continue to have full force and effect

This condition ensures continued compliance with applicable water quality standards and other appropriate requirements of state law. Notwithstanding any determinations by the U.S. Army Corps or other federal agency pursuant to 40 C.F.R. section 121.9, the Permittee must comply with the entirety of this certification because, pursuant to State Water Board Water Quality Order No. 2003-0017-DWQ, this Order also serves as Waste Discharge Requirements pursuant to the Porter-Cologne Water Quality Control Act.

6. The Permittee shall adhere to all requirements in the mitigation monitoring and reporting program

This condition ensures mitigation measures required to lessen the significance of impacts to water quality identified pursuant to California Environmental Quality Act review are implemented and enforceable. Pursuant to California Code of Regulations, title 14, section 15097, subdivision (a), a public agency shall adopt a program for monitoring and reporting on mitigation measures imposed to mitigate or avoid significant environmental effects to ensure implementation.

7. Construction General Permit Requirement

Permittees are required to obtain coverage under National Pollutant Discharge Elimination System (NPDES) General Permit for Storm Water Discharges Associated with Construction and Land Disturbance Activities

(Order No. 2009-0009-DWQ; NPDES No. CAS000002), as amended, for discharges to surface waters comprised of storm water associated with construction activity, including, but not limited to, demolition, clearing, grading, excavation, and other land disturbance activities of one or more acres, or where projects disturb less than one acre but are part of a larger common plan of development that in total disturbs one or more acres. This is required pursuant to Clean Water Act sections 301 and 402 which prohibit certain discharges of storm water containing pollutants except in compliance with an NPDES permit. (33 U.S.C. section 1311, and 1342(p); 40 C.F.R. parts 122, 123, and 124.)

F. Administrative

1. Signatory requirements for all document submittals

The condition for signatory requirements is required pursuant to Water Code section 13267, which requires any person discharging waste that could affect the quality of waters to provide to the Central Valley Water Board, under penalty of perjury, any technical or monitoring program reports as required by the Central Valley Water Board. The signatory requirements are consistent with 40 C.F.R. section 122.22.

2. This Order does not authorize any act which results in the taking of a threatened, endangered, or candidate species

Pursuant to the California Endangered Species Act (Fish & Wildlife Code, sections 2050 et seq.) and federal Endangered Species Act (16 U.S.C. sections 1531 et seq.), the Order does not authorize any act which results in the taking of a threatened, endangered, or candidate species. In the event a Permittee requires authorization from the state or federal authorities, California Code of Regulations, title 23, section 3856(e), requires that copies be provided to the Central Valley Water Board of "any final and signed federal, state, and local licenses, permits, and agreements (or copies of the draft documents, if not finalized) that will be required for any construction, operation, maintenance, or other actions associated with the activity. If no final or draft document is available, a list of all remaining agency regulatory approvals being sought shall be included."

3. The Permittee shall grant Central Valley Water Board staff

The condition related to site access requirements is authorized pursuant to the Central Valley Water Board's authority to investigate the quality of any waters of the state within its region under Water Code section 13267 and 13383. Water Code section 13267, subdivision (c) provides that "the regional board may inspect the facilities of any person to ascertain whether the purposes of this division are being met and waste discharge requirements are being complied with." Water Code section 13383 authorizes the regional

boards to establish monitoring, inspection, entry, reporting, and other recordkeeping requirements, as authorized by Water Code section 13160, for any person who discharges, or proposes to discharge, to navigable waters.

4. A copy of this Order shall be provided to any consultants, contractors, and subcontractors

This Condition ensures any agent of the Permittee is aware of Order requirements. Such conditions within the Order are necessary to ensure that all activities will comply with applicable water quality standards and other appropriate requirements (33 U.S.C. section 1341; California Code of Regulations, title 23, section 3859, subdivision (a)) and cannot be adhered to if the Permittees' agents are unaware of applicable requirements. These conditions are necessary to ensure compliance with applicable water quality objectives and protection of beneficial uses found in the Basin Plan, adopted pursuant to Water Code section 13240, and detailed in the Order.

5. A copy of this Order must be available at the Project site(s) during construction . . .

This Condition ensures any agent of the Permittee is aware of Order requirements. Such conditions within the Order are necessary to ensure that all activities will comply with applicable water quality standards and other appropriate requirements (33 U.S.C. section 1341; California Code of Regulations, title 23, section 3859, subdivision (a)) and cannot be adhered to if the Permittees' agents are unaware of applicable requirements. These conditions are necessary to ensure compliance with applicable water quality objectives and protection of beneficial uses found in the Basin Plan, adopted pursuant to Water Code section 13240, and detailed in the Order.

6. Lake or Streambed Alteration Agreement

This condition is required pursuant to California Code of Regulations, title 23, section 3856, subdivision (e), which requires that copies be provided to the Central Valley Water Board of "any final and signed federal, state, and local licenses, permits, and agreements (or copies of the draft documents, if not finalized) that will be required for any construction, operation, maintenance, or other actions associated with the activity. If no final or draft document is available, a list of all remaining agency regulatory approvals being sought shall be included."

G. Construction

1. Dewatering

Conditions related to dewatering and diversions ensure protection of beneficial uses during construction activities. Work in waters of the state and temporary diversions must not cause exceedances of water quality

objectives; accordingly, these conditions require implementation of best practicable treatments and controls to prevent pollution and nuisance, and to maintain water quality consistent with the Basin Plan and Antidegradation Policy. Further and consistent with the Dredge or Fill Procedures, section IV.A.2.c, water quality monitoring plans are required for any in-water work. Finally, dewatering activities may require a Clean Water Act section 402 permit or separate Waste Discharge Requirements under Water Code section 13263 for dewatering activities that result in discharges to land.

Conditions related to water rights permits are required pursuant to California Code of Regs, title 23, section 3856(e), which requires complete copies of any final and signed federal, state, or local licenses, permits, and agreements (or copies of drafts if not finalized) that will be required for any construction, operation, maintenance, or other actions associated with the activity.

Conditions related to monitoring and reporting are required to provide the Central Valley Water Board necessary project information and oversight to ensure project discharges are complying with applicable Basin Plan requirements. These monitoring and reporting requirements are consistent with the Central Valley Water Board's authority to investigate the quality of any waters of the state and require necessary monitoring and reporting pursuant to Water Code sections 13267 and 13383. Water Code section 13267 authorizes the regional boards to require any person who has discharged, discharges, or is suspected of having discharged or discharging, or who proposes to discharge waste to provide technical or monitoring program reports required by the regional board. Water Code section 13383 authorizes the regional boards to establish monitoring, inspection, entry, reporting, and other recordkeeping requirements, as authorized by Water Code section 13160, for any person who discharges, or proposes to discharge, to navigable waters.

2. Directional Drilling

The conditions related to directional drilling are necessary given the risks posed by an inadvertent return of drilling fluids to waters. Given the likely toxicity of the discharge and the proximity to the impacted water, significant adverse impacts to waters would be expected and remediation would be difficult. This condition is required to assure that the discharge from the Project will comply with water quality objectives established for surface waters, including for chemical constituents and toxicity. (Basin Plan, Sections 3.1.3 & 3.1.20.) Horizontal directional drilling, and similar drilling operations, may result in the unintentional discharge of drilling fluids to waters of the state. These conditions are necessary to ensure that 1) the discharge shall not adversely affect the beneficial uses of the receiving water or cause a condition of nuisance; 2) the discharge shall comply with all applicable water quality objectives; and 3) treatment and control of the discharge shall be

implemented to assure that pollution and nuisance will not occur and the highest water quality is maintained. (Dredge or Fill Procedures, Section IV.B.1.)

3. Dredging – Not Applicable

4. Fugitive Dust

This condition is required to assure that the discharge from the Project will comply with water quality objectives established for surface waters, including for chemical constituents and toxicity. (Basin Plan, Sections 3.1.3 & 3.1.20.) Chemicals used in dust abatement activities can result in a discharge of chemical additives and treated waters to surface waters of the state. Therefore, dust abatement activities shall be conducted so that sediment or dust abatement chemicals are not discharged into waters of the state and do not adversely affect beneficial uses. (Basin Plan, Section 2.1; Dredge or Fill Procedures, Section IV.B.1.)

5. Good Site Management “Housekeeping”

Conditions related to site management require best practices to prevent, minimize, and/or clean up potential construction spills, including from construction equipment. For instance, fuels and lubricants associated with the use of mechanized equipment have the potential to result in toxic discharges to waters of the state in violation of water quality standards, including the toxicity and floating material water quality objectives. (Basin Plan, Sections 3.1.7 & 3.1.20.) This condition is also required pursuant to Water Code section 13264, which prohibits any discharge that is not specifically authorized in this Order. Among other requirements, Section IV.B.1 of the Dredge or Fill Procedures requires that Project impacts will not cause or contribute to a degradation of waters; or violate water quality standards.

6. Hazardous Materials

Conditions related to toxic and hazardous materials are necessary to assure that discharges comply with applicable water quality objectives under the Basin Plan, adopted under section 13240 of the Water Code, including the narrative toxicity and chemical constituents water quality objectives. (Basin Plan, Sections 3.1.3, 3.1.20.) Further, conditions related to concrete/cement are required pursuant to the Basin Plan’s pH water quality objective. (Basin Plan, Section 3.1.11.)

7. Invasive Species and Soil Borne Pathogens

Conditions related to invasive species and soil borne pathogens are required to ensure that discharges will not violate any water quality objectives under the Basin Plan, adopted under Water Code section 13240 of the Water Code. Invasive species and soil borne pathogens adversely affect beneficial uses

designated in the Basin Plan, such as rare, threatened, or endangered species; wildlife habitat; and preservation of biological habitats of special significance. (See Basin Plan, Section 2.1.) Among other requirements, Section IV.B.1 of the Dredge or Fill Procedures requires that Project impacts will not contribute to a net loss of the overall abundance, diversity, and condition of aquatic resources; cause or contribute to a degradation of waters; or violate water quality standards.

8. Post-Construction Storm Water Management – Not Applicable

9. Roads

These conditions are required to assure that discharges will comply with water quality standards within the Basin Plan. Specifically, activities associated with road maintenance have the potential to exceed water quality objectives for oil and grease, pH, sediment, settleable materials, temperature, and turbidity. (Basin Plan, Sections 3.1.10, 3.1.11, 3.1.15, 3.1.16, 3.1.19, 3.1.21.) Further, these conditions are required to assure that they do not result in adverse impacts related to hydromodification or create barriers to fish passage and spawning activities. Among other requirements, Section IV.B.1 of the Dredge or Fill Procedures requires that Project impacts will not contribute to a net loss of the overall abundance, diversity, and condition of aquatic resources; cause or contribute to a degradation of waters; or violate water quality standards.

10. Sediment Control

Conditions related to erosion and sediment control design requirements are required to sustain fluvial geomorphic equilibrium. Improperly designed and installed BMPs result in excess sediment, which impairs surface waters, adversely affect beneficial uses, and results in exceedance of water quality objectives in the Basin Plan, including for sediment and turbidity. (Basin Plan, Sections 3.1.15 & 3.1.21.) Among other requirements, Section IV.B.1 of the Dredge or Fill Procedures requires that Project impacts will not contribute to a net loss of the overall abundance, diversity, and condition of aquatic resources; cause or contribute to a degradation of waters; or violate water quality standards.

11. Special Status Species

See F.2 above.

12. Stabilization/Erosion Control

Conditions related to erosion and sediment control design requirements are required to sustain fluvial geomorphic equilibrium. Improperly designed and installed BMPs result in excess sediment, which impairs surface waters, adversely affect beneficial uses, and results in exceedance of water quality

objectives in the Basin Plan, including for sediment. (Basin Plan, Section 3.1.15.) Among other requirements, Section IV.B.1 of the Dredge or Fill Procedures requires that Project impacts will not contribute to a net loss of the overall abundance, diversity, and condition of aquatic resources; cause or contribute to a degradation of waters; or violate water quality standards.

13. Storm Water

Post-rain erosion and sedimentation problems can contribute to significant degradation of the waters of the state; therefore, it is necessary to take corrective action to eliminate such discharges in order to avoid or minimize such degradation. Implementation of control measures and best management practices described in the condition will assure compliance with water quality objectives including chemical constituents, floating material, sediment, turbidity, temperature, suspended material, and settleable material within the Basin Plan. (Basin Plan, Sections 3.1.1, 3.1.7, 3.1.15, 3.1.16, 3.1.17, 3.1.19, 3.1.21.) Among other requirements, Section IV.B.1 of the Dredge or Fill Procedures requires that Project impacts will not cause or contribute to a degradation of waters or violate water quality standards.

H. Site Specific – Not Applicable

I. Total Maximum Daily Load (TMDL) – Not Applicable

J. Mitigation for Temporary Impacts

The conditions under Section J require restoration of temporary impacts to waters of the state. Conditions in this section related to restoration and/or mitigation of temporary impacts are consistent with the Dredge or Fill Procedures, which requires “in all cases where temporary impacts are proposed, a draft restoration plan that outlines design, implementation, assessment, and maintenance for restoring areas of temporary impacts to pre-project conditions.” (Dredge or Fill Procedures section IV. A.2(d) & B.4.) Technical reporting and monitoring requirements under this condition are consistent with the Central Valley Water Board’s authority to investigate the quality of any waters of the state and require necessary reporting and monitoring pursuant to Water Code sections 13267 and 13383.

K. Compensatory Mitigation for Permanent Impacts

Mitigation Bank Development/In-Lieu Fee Project Development

The conditions under Section K regarding compensatory mitigation for permanent impacts ensure permanent physical loss and permanent ecological degradation of waters of the state are adequately mitigated. These conditions are necessary to ensure compliance with state and federal anti-degradation policies and are consistent with Section IV.B.1.a of the Dredge or Fill Procedures, which

requires that the Water Boards will approve a project only after it has been determined that a sequence of actions has been taken to first avoid, then to minimize, and lastly compensate for adverse impacts that cannot be practicably avoided or minimized. (See also California Code of Regulations, section 3856, subdivision (h) [requiring submittal of proposed mitigation and description of steps taken to avoid, minimize, or compensate].) These compensatory mitigation conditions are also consistent with Executive Order W-59-93 commonly referred to as California's "No Net Loss" Policy for wetlands. The objective of the No Net Loss Policy is to ensure no overall net loss of and a long term net gain in the quantity, quality, and permanence of wetland acreage and values in California. Further, compensatory mitigation requirements must comply with subpart J of the Supplemental State Guidelines. Conditions related to financial assurances are also required to ensure that compensatory mitigation will be provided. (Dredge or Fill Procedures, section IV.B.5.f.)

L. Certification Deviation

- 1. Minor modifications of Project locations or predicted impacts**
- 2. A Project modification shall not be granted a Certification Deviation if it warrants or necessitates**

Authorization under the Order is granted based on the application and supporting information submitted. Among other requirements, the Permittee is required to detail the project description in a complete application pursuant to California Code of Regulations, title 23, section 3856, subdivision (h). Pursuant to Water Code section 13260, subdivision (c), each person discharging waste, or proposing to discharge waste shall file a report of waste discharge relative to any material change or proposed change in the character, location, or volume of the discharge. Pursuant to Water Code section 13264, subdivision (a), the Permittee is prohibited from initiating the discharge of new wastes, or making material changes to the character, volume, and timing of waste discharges authorized herein without filing a report required by Water Code section 13260 or its equivalent for certification actions under California Code of Regulations, title 23, section 3856. Project deviations may require additional or different Order conditions as authorized by law to ensure compliance with applicable water quality standards and other appropriate requirements (33 U.S.C. section 1341; California Code of Regulations, title 23, section 3859, subdivision (a)) and may result in impacts to water quality that require additional environmental review (California Code of Regulations, title 14, sections 15062-15063).