
Central Valley Regional Water Quality Control Board

15 January 2025

Jeff Werner
City of Elk Grove Public Works Department
8401 Laguna Palms Way
Elk Grove, CA 95758
JWerner@elkgrovecity.org

**ORDER AMENDING CLEAN WATER ACT SECTION 401 TECHNICALLY
CONDITIONED WATER QUALITY CERTIFICATION; CITY OF ELK GROVE PUBLIC
WORKS DEPARTMENT, LAGUNA CREEK AND WHITEHOUSE CREEK MULTI-
FUNCTIONAL CORRIDOR PROJECT (WDID#5A34CR00897A1), SACRAMENTO
COUNTY**

This Order responds to the 12 December 2024 request for an amendment of the Laguna Creek and Whitehouse Creek Multi-Functional Corridor Project (Project) Section 401 Water Quality Certification (WDID#5A34CR00897). The original Water Quality Certification (Certification) was issued on 1 November 2024. The requested amendment is hereby approved. The original Certification is therefore amended as described below. Please attach this document to the original Certification.

AMENDMENT:

The City of Elk Grove Public Works Department requested an amendment to update authorized impacts as a result of fill and dredge activities to waters of the state. As a result of design changes to the scope of work, no permanent impacts to waters of the state will occur as a result of the Project. The Project will incur temporary impacts only. As a result, Compensatory mitigation requirements are also updated to reflect the change from permanent to temporary impacts.

The Certification is amended to redact "Table 2: Total Project Fill/Excavation Quantity for Permanent Physical Loss of Area Impacts."

Section VII Table 1, Section X, and Section XIV.I.3 of the Certification is amended to reflect the updated temporary impacts as a result of Project activities:

VII. DESCRIPTION OF DIRECT IMPACTS TO WATERS OF THE STATE

Table 1: Total Project Fill/Excavation Quantity for Temporary Impacts¹

Aquatic Resources Type	Acres	Cubic Yards	Linear Feet
Stream Channel	1.43	1,381	1,940
Wetland	0.085		163

X. COMPENSATORY MITIGATION

No compensatory mitigation was required for permanent impacts because all impacts are temporary in nature. No permanent impacts to water quality or resources will occur as a result of Project activities.

XIV.I.3 MITIGATION FOR TEMPORARY IMPACTS

If restoration of temporary impacts to waters of the state is not completed by the end of the winter season following the completion of project impacts, compensatory mitigation may be required to offset temporal loss of waters of the state.

APPLICATION FEE RECEIVED:

No fee was required for this amendment. Total fees of \$45,234.00 for the original Certification were received on 21 October 2024. The fee amount was determined as required by California Code of Regulations, title 23, sections 3383(b)(3) and 2200(a)(3), as was calculated as category A - Fill & Excavation Discharges (fee code 84) with the dredge and fill fee calculator.

CENTRAL VALLEY REGIONAL WATER QUALITY CONTROL BOARD CONTACT:

Carter Cook, Environmental Scientist
11020 Sun Center Drive, Suite 200
Rancho Cordova, CA 95670-6114
Carter.Cook@waterboards.ca.gov
(916) 464-4699

PUBLIC NOTICE:

The Central Valley Water Board provided public notice of the application and draft order pursuant to California Code of Regulations, title 23, section 3858 and Water Code section 13167.5 from 20 December 2024 to 10 January 2025. The Central Valley Water Board did not receive any comments during the comment period.

WATER QUALITY CERTIFICATION:

I hereby issue an Order amending the existing Clean Water Act, Section 401 Technically Conditioned Water Quality Certification for the Laguna Creek and Whitehouse Creek Multi-Functional Corridor Project (WDID#5A34CR00897A1). All other conditions and provisions of the original Water Quality Certification and any previously approved amendments remain in full force and effect, except as modified based on the conditions of this Order. Failure to comply with the terms and conditions of the original Water Quality Certification, previously approved amendments, or of this Order may result in suspension or revocation of the Water Quality Certification.

Original Signed by Anne Walters for:
Patrick Pulupa
Executive Officer

Enclosure: Project Information

Attachment: Figure 1 – Project Location Map, Figures 2-5 – Project Impacts to Jurisdictional Waters

cc: [Via email only] (w/enclosure)

United States Army Corps of Engineers
Sacramento District Office
Regulatory Division
SPKRegulatoryMailbox@usace.army.mil

United States Environmental Protection Agency
R9CWA401@epa.gov

CWA Section 401 WQC Program
State Water Resources Control Board
StateBoard401@waterboards.ca.gov

Hanna Sheldon
Dokken Engineering
HSheldon@dokkenengineering.com

Amy Dunay
Dokken Engineering
ADunay@dokkenengineering.com

Richard McHenry
CA Sportfishing Protection Alliance
RMcHenry@calsport.org

Figure 1: Project Location

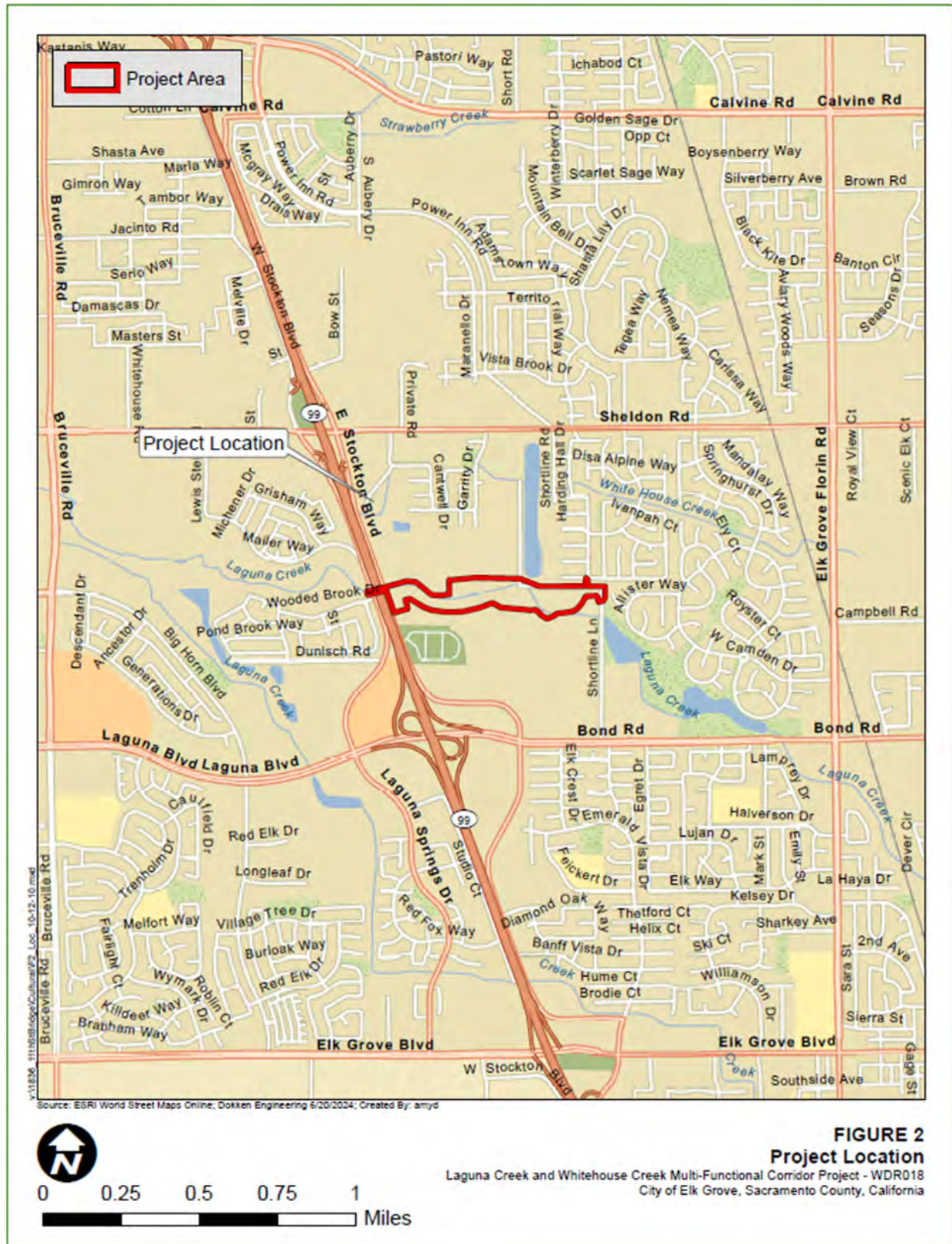


Figure 2: Project Impacts to Jurisdictional Waters Page 1 of 4

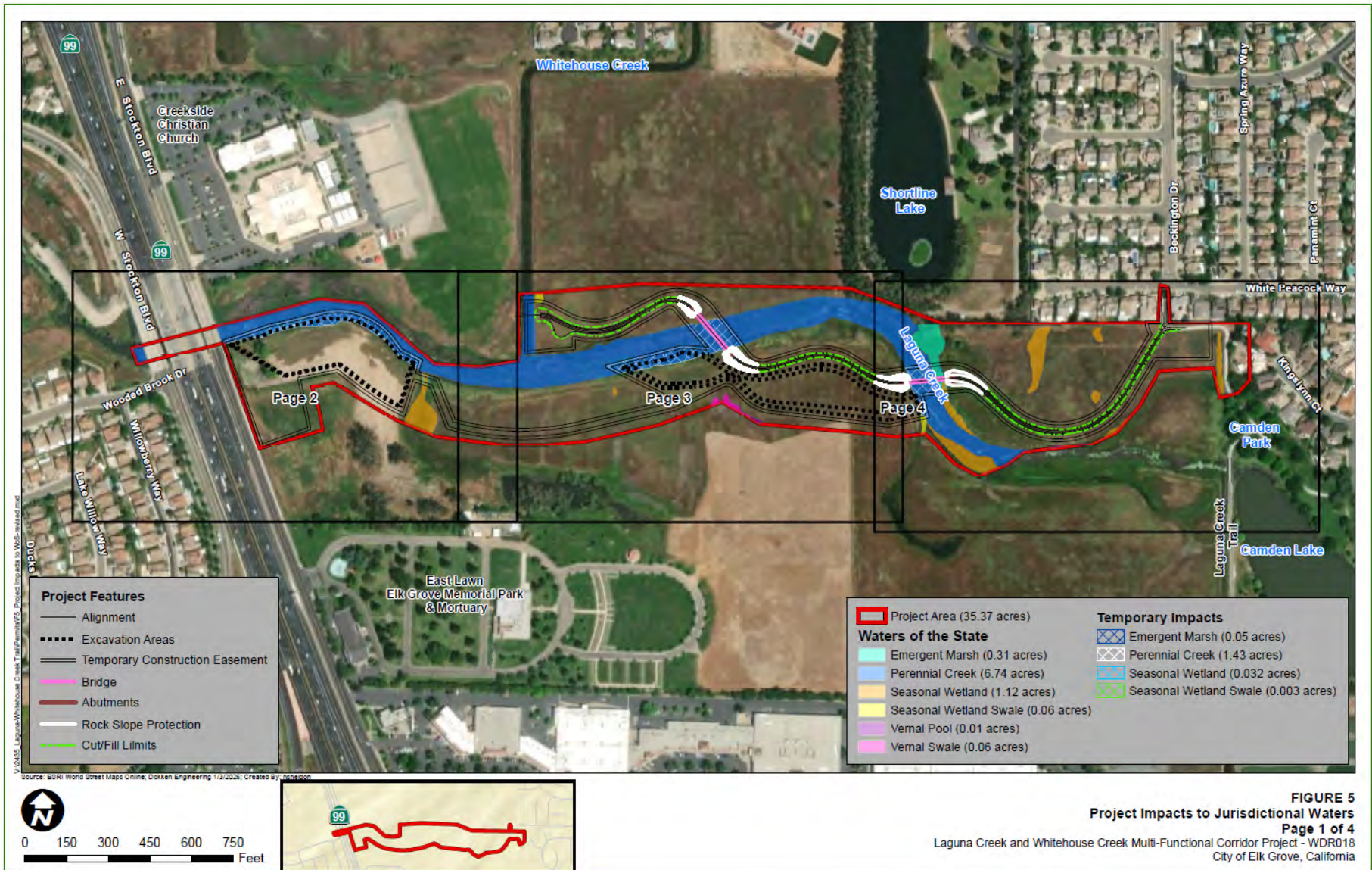


Figure 3: Project Impacts to Jurisdictional Waters Page 2 of 4



Figure 4: Project Impacts to Jurisdictional Waters Page 3 of 4

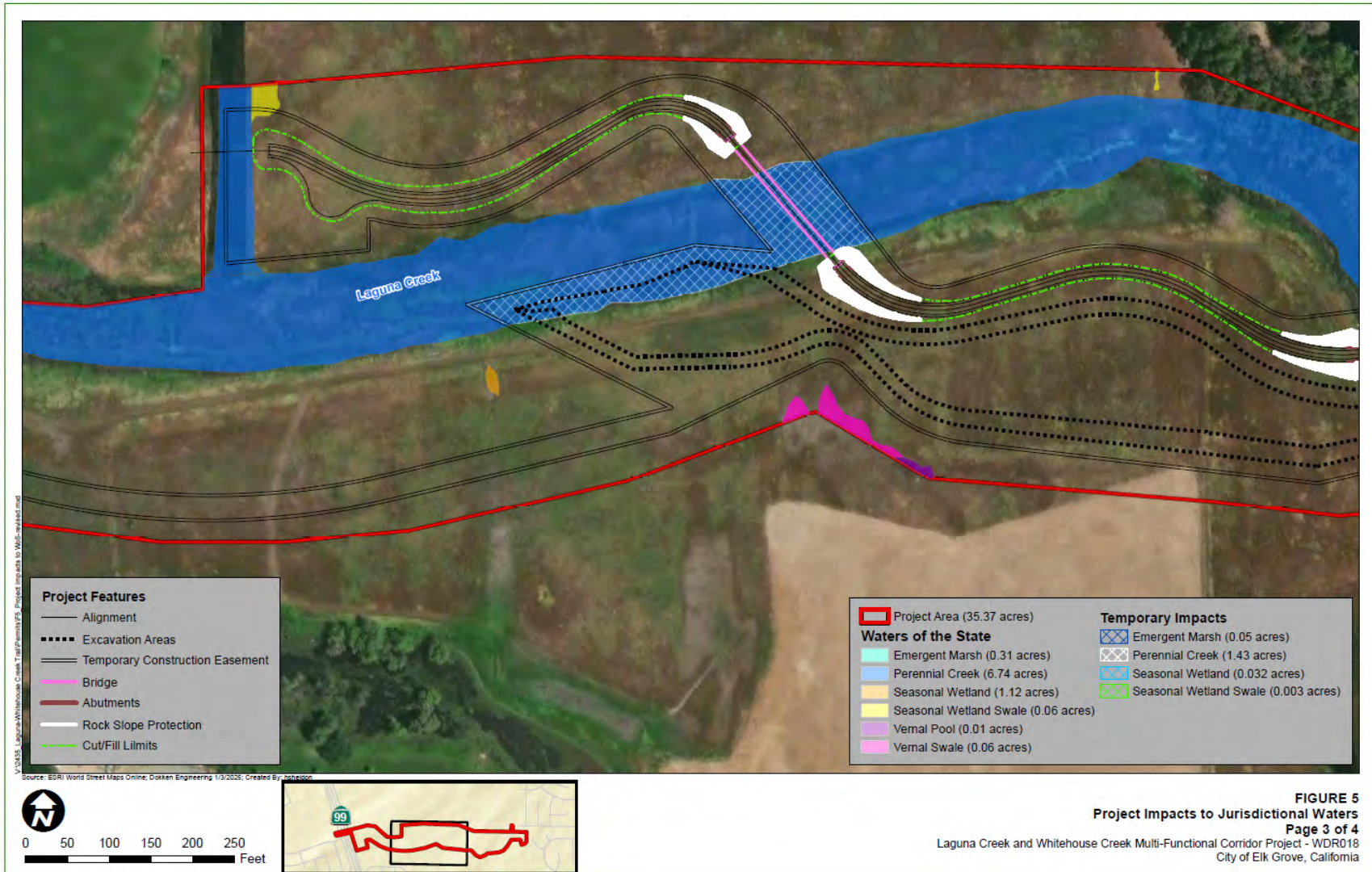


FIGURE 5
Project Impacts to Jurisdictional Waters
Page 3 of 4
 Laguna Creek and Whitehouse Creek Multi-Functional Corridor Project - WDR018
 City of Elk Grove, California

Figure 5: Project Impacts to Jurisdictional Waters Page 4 of 4



FIGURE 5
Project Impacts to Jurisdictional Waters
Page 4 of 4
 Laguna Creek and Whitehouse Creek Multi-Functional Corridor Project - WDR018
 City of Elk Grove, California