

## Central Valley Regional Water Quality Control Board

25 June 2025

Philip McCartney  
Mokelumne Hill Sanitary District  
P.O. Box 209  
Mokelumne Hill, CA 95245  
[McCartneyStone59@gmail.com](mailto:McCartneyStone59@gmail.com)

**NOTICE OF APPLICABILITY FOR COVERAGE UNDER ORDER NO. 2004-0004-DWQ, STATEWIDE GENERAL WASTE DISCHARGE REQUIREMENTS FOR DREDGED OR FILL DISCHARGES TO WATERS DEEMED BY THE U.S. ARMY CORPS OF ENGINEERS TO BE OUTSIDE OF FEDERAL JURISDICTION, MOKELUMNE HILL SANITARY DISTRICT WASTEWATER SYSTEM IMPROVEMENTS PROJECT (WDID#5B05CR00130), CALAVERAS COUNTY**

On 12 May 2025, the Mokelumne Hill Sanitary District (Permittee) submitted a Notice of Intent (NOI) to enroll under and comply with State Water Resources Control Board (State Water Board) Order No. 2004-0004-DWQ, Statewide General Waste Discharge Requirements for Dredged or Fill Discharges to Waters Deemed by the United States Army Corps of Engineers to be Outside of Federal Jurisdiction.

The Central Valley Water Quality Control Board (Central Valley Water Board) has reviewed your enrollment materials and finds the Mokelumne Hill Sanitary District Wastewater System Improvements Project (Project) meets the requirements of, and is hereby enrolled under, Order No. 2004-0004-DWQ. You may proceed with your Project in accordance with the Order.

A copy of [Order 2004-0004-DWQ](https://www.waterboards.ca.gov/board_decisions/adopted_orders/water_quality/2004/wqo/wqo2004-0004.pdf) ([https://www.waterboards.ca.gov/board\\_decisions/adopted\\_orders/water\\_quality/2004/wqo/wqo2004-0004.pdf](https://www.waterboards.ca.gov/board_decisions/adopted_orders/water_quality/2004/wqo/wqo2004-0004.pdf)) can be found on the State Water Resources Control Board's Adopted Orders webpage and is enclosed.

Please familiarize yourself with the requirements of Order No. 2004-0004-DWQ. You are responsible for complying with all applicable Order requirements. Failure to comply with Order No. 2004-0004-DWQ constitutes a violation of the California Water Code and may result in enforcement action or termination of enrollment under the Order.

**PROJECT DESCRIPTION:**

The 11.97-acre Project consists of replacing aged and undersized sewer mains for the Mokelumne Hill Sanitary District to ensure safe conveyance of domestic wastewater to the wastewater treatment plant. Specifically, the project improvements will include

removing two sanitary lift stations and replacing them with an 8" diameter open-cut trench gravity main system. The new pipe will be approximately 5,500 linear feet and will be composed of polyvinyl chloride (PVC). Approximately 33 manholes composed of concrete will be placed. Additionally, the Permittee will replace approximately 1,270 linear feet of 4-inch- and 6-inch-diameter sewer main (open cut trench) at Easy Bird Road, Garden Lane, and Maretta Lane.

Project elements that affect aquatic resources include pipe replacement activities at Drainage ED1a and ED3. The ED1a sewer main will be located underneath a stormwater culvert. The ED3 sewer main will be located underneath a stream. The Project will temporarily impact 64 square feet or 0.001 acre/28 linear feet of stream channel. Temporarily impacted areas will be restored to pre-Project condition.

**PROJECT LOCATION:**

The Project is located in Mokelumne Hill. The approximate Project areas are located at latitude 38.303028°N and longitude 120.08948°W and latitude 38.298780°N and longitude 120.701071°W.

**PROJECT SCHEDULE:**

20 March 2026 through 22 September 2030

**APPLICATION FEE RECEIVED:**

\$4,212.00 was received on 12 May 2025. The fee amount was determined as required by California Code of Regulations, title 23, sections 3833(b)(3) and 2200(a)(3), and was calculated as category E - Low Impact Discharges (fee code 87) with the dredge and fill fee calculator.

**TERMINATION OF COVERAGE:**

Upon completion of the Project, you shall submit a complete Notice of Termination (NOT) requesting to be un-enrolled under Order No. 2004-0004-DWQ. Attachment 2 to the Order contains the NOT form.

If you have questions concerning this matter, please contact Jenna Yang by phone at (916) 464-4764 or by email at [Jenna.Yang@waterboards.ca.gov](mailto:Jenna.Yang@waterboards.ca.gov).

*Original Signed by Anne Walters for:*  
Patrick Pulupa  
Executive Officer

cc: Distribution List, page 3

Enclosure: State Water Resources Control Board Water Quality Order No.  
2004-0004-DWQ

Attachments: Figure 1: Map of Impacts at ED1a  
Figure 2: Map of Impacts at ED3

**DISTRIBUTION LIST**  
**[via email only]**

United States Army Corps of Engineers  
Sacramento District Office  
Regulatory Division  
[SPKRegulatoryMailbox@usace.army.mil](mailto:SPKRegulatoryMailbox@usace.army.mil)

Department of Fish and Wildlife, Region 2  
[R2LSA@wildlife.ca.gov](mailto:R2LSA@wildlife.ca.gov)

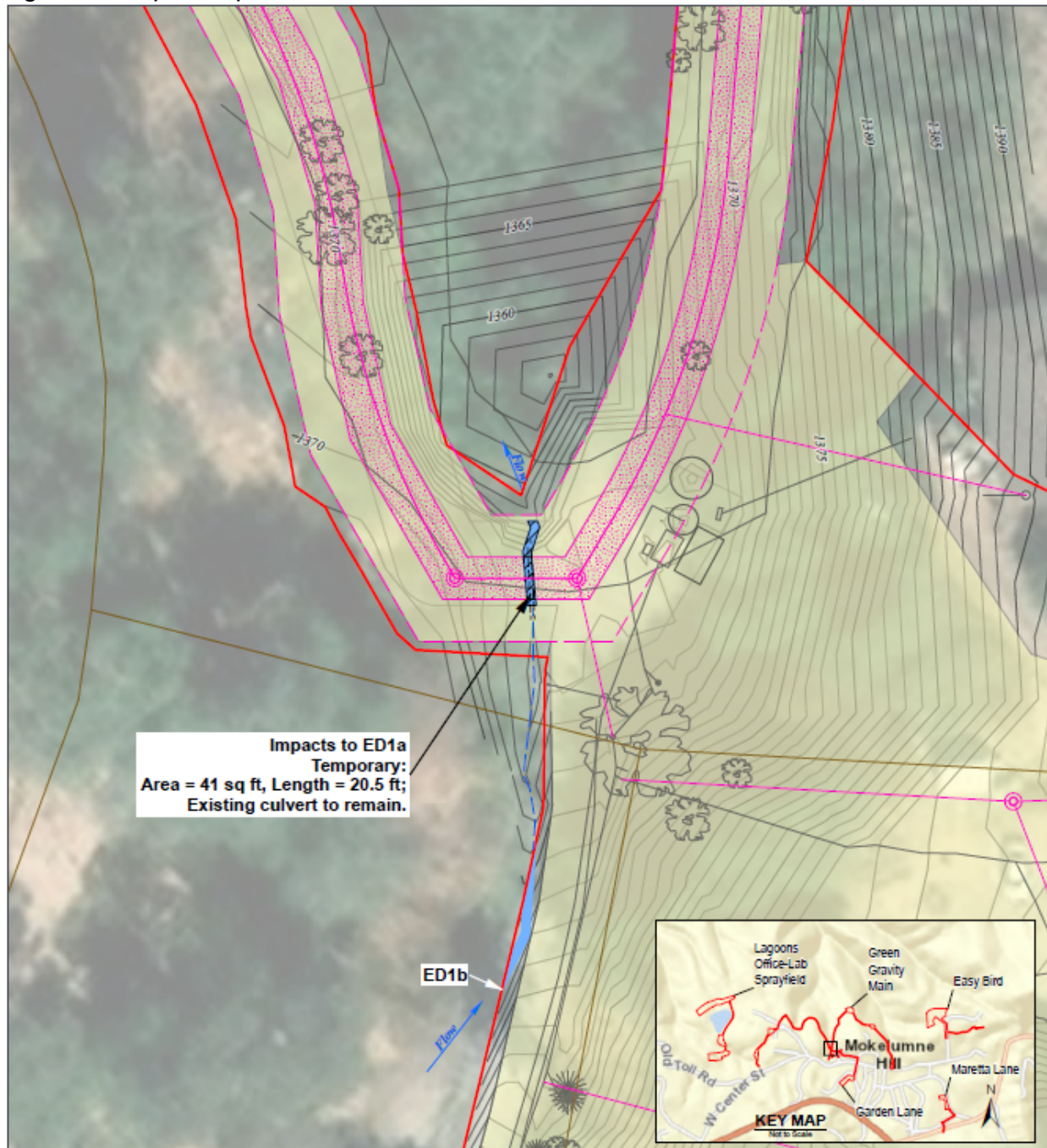
United States Environmental Protection Agency  
[R9CWA401@epa.gov](mailto:R9CWA401@epa.gov)

CWA Section 401 WQC Program  
State Water Resources Control Board  
[Stateboard401@waterboards.ca.gov](mailto:Stateboard401@waterboards.ca.gov)

Richard McHenry  
CA Sportfishing Protection Alliance  
[RMcHenry@calsport.org](mailto:RMcHenry@calsport.org)

Kevin Derby  
SWCA Environmental Consultants  
[Kevin.Derby@swca.com](mailto:Kevin.Derby@swca.com)

Figure 1: Map of Impacts at ED1a



MOKELUMNE HILL CWSRF  
 PROJECT

**Impacts to  
 Aquatic  
 Resources**

- Biological Study Area (BSA)
- Ephemeral Drainage (ED)
- Hydrologic Continuity
- Impact to Aquatic Resource
- Proposed Sanitary Sewer Improvements (Underground)
- Construction Areas (Temporary Impact)
- Proposed Easement/Right-of-way
- Existing Culvert

Calaveras County, CA  
 Mokelumne Hill, CA  
 NAD 1983 StatePlane California III  
 FIPS 0403 Feet  
 120.7089°W 38.303°N  
 Source: Mokelumne Hill Sanitary District  
 Wastewater Improvements Project  
 (21 January 2025)  
 By: Weber, Gho and Associates

World Imagery Basemap Layer  
 Esri ArcGIS Online  
 accessed February 2025

Updated: 3/05/2025  
 Project No. 07722  
 Layout: 07722\_mokelumne\_hill\_impacts(0119)  
 Apr: 07722\_Mokelumne Hill CWSRF

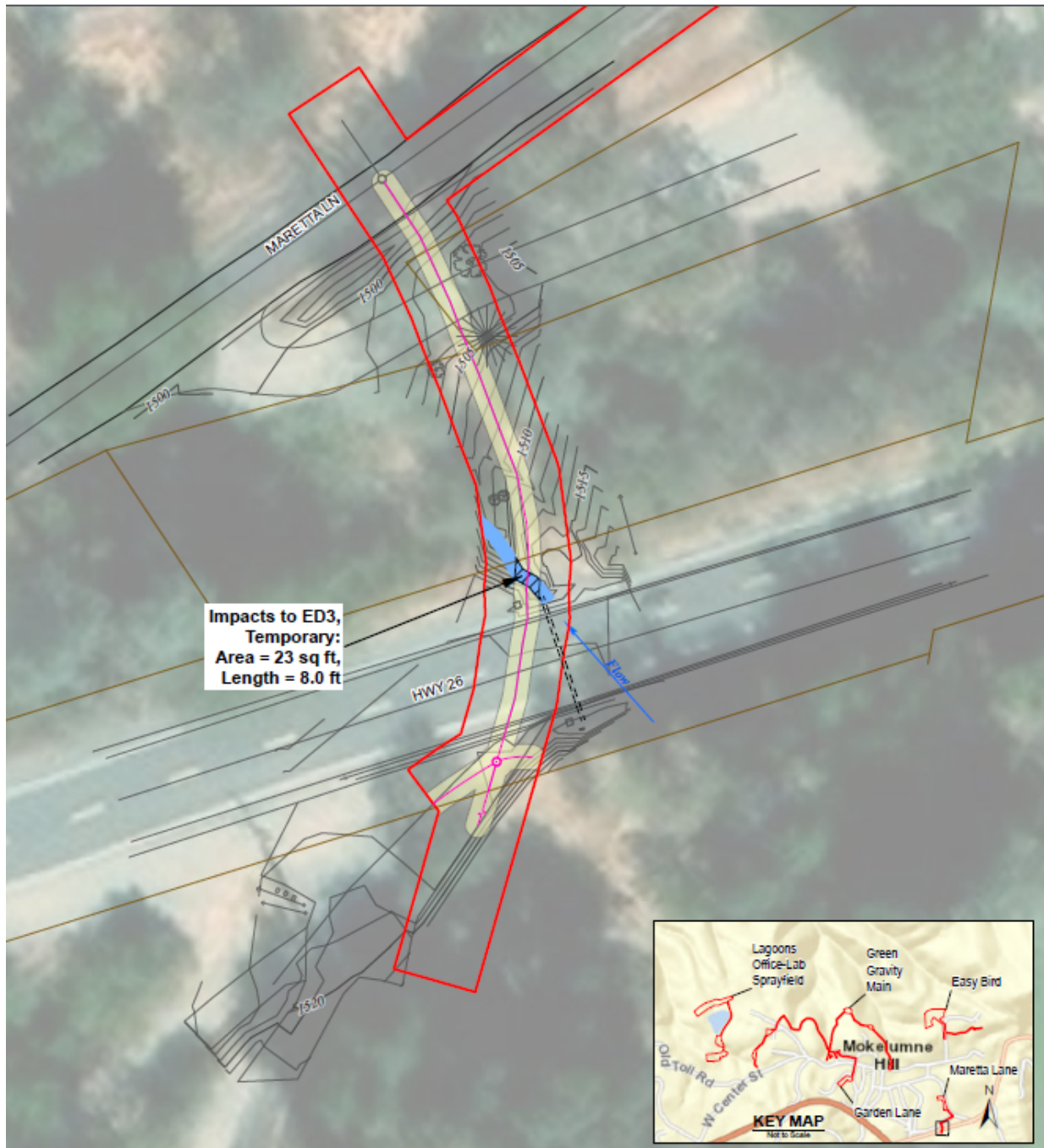
0 15 30 Feet  
 0 5 9 Meters

1:360

**SWCA**  
 environmental solutions

Sheet 1 of 2

Figure 2: Map of Impacts at ED3



**Impacts to ED3,  
 Temporary:  
 Area = 23 sq ft,  
 Length = 8.0 ft**

MOKELUMNE HILL CWSRF  
 PROJECT

**Impacts to  
 Aquatic  
 Resources**

- Biological Study Area (BSA)
- Ephemeral Drainage (ED)
- Hydrologic Continuity
- Impact to Aquatic Resource
- Proposed Sanitary Sewer Improvements (Underground)
- Proposed Aggregate Base Service Road
- Construction Areas (Temporary Impact)
- Existing Culvert

Calaveras County, CA  
 Mokelumne Hill, CA  
 NAD 1983 StatePlane California III  
 FIPS 0403 Feet  
 120.7011°W 38.2988°N  
 Source: Mokelumne Hill Sanitary District  
 Wastewater Improvements Project  
 (21 January 2025)  
 By: Weber, Gho and Associates

World Imagery Base map layer  
 Esri ArcGIS Online  
 accessed February 2025

Updated: 3/25/2025  
 Project No. 67722  
 Layout: 67722\_mokelumne\_Hill\_Impacts(61197)  
 Apr: 67722\_Mokelumne Hill CWSRF

0 15 30 Feet  
 0 5 10 Meters

1:380

**SWCA**  
 SOUTHWESTERN WATER CONSULTANTS

Sheet 2 of 2