

---

## Central Valley Regional Water Quality Control Board

19 February 2021

Parisa Lodge  
California Department of Transportation  
1976 E. Dr. MLK Jr. Blvd.  
Stockton, CA 95205  
*Parisa.Lodge@dot.ca.gov*

**ORDER AMENDING CLEAN WATER ACT SECTION 401 TECHNICALLY  
CONDITIONED WATER QUALITY CERTIFICATION; CALIFORNIA DEPARTMENT  
OF TRANSPORTATION, POTATO SLOUGH BRIDGE BEARING PADS PROJECT  
(WDID#5B39CR00340A1), SAN JOAQUIN COUNTY**

This Order responds to the 9 February 2021 request for an amendment of Potato Slough Bridge Bearing Pads Project (Project) Section 401 Water Quality Certification (WDID#5B39CR00340). The original Water Quality Certification (Certification) was issued on 29 January 2021. The requested amendment is hereby approved. The original Certification is therefore amended as described below. Please attach this document to the original Certification.

**AMENDMENT:**

California Department of Transportation is requesting an amendment to correct dimensions of concrete footings and associated Project impacts. The original Certification authorized 4-foot wide, 50-foot long concrete footings permanently impacting 0.004 acre of wetland habitat and temporarily impacting 0.28 acre of wetland habitat. The correct dimensions are 9-foot wide, 45-foot long concrete footings permanently impacting 0.019 acre of wetland habitat and temporarily impacting 0.15 acre of wetland habitat.

The Certification is amended as shown below:

**TECHNICAL CERTIFICATION CONDITIONS:**

33. To mitigate for the loss of 0.019 acre of wetland habitat, the Applicant shall purchase a minimum of 0.019 mitigation credits from a United States Army Corps of Engineers approved mitigation bank or in lieu fee program, or mitigate as otherwise required by the United States Army Corps of Engineers for the impacted watershed prior to commencing construction. The Applicant shall provide evidence of all off-site compensatory mitigation to the Central Valley Water Board. At a minimum, compensatory mitigation must achieve a ratio of 1:1 for permanent impacts. Compensatory mitigation must comply with the effective policy, which ensures no

overall net loss of wetlands for impacts to waters of the state, at the time of Certification. Evidence of compliance with compensatory mitigation requirements includes providing a letter from the approved in-lieu fee recipient. The letter must: a) be on the in-lieu fee recipient's letterhead; b) be signed by an authorized representative of the in-lieu fee recipient; c) indicate the United States Army Corps of Engineers' SPK number; d) describe the Project name and location; and e) detail the type of in-lieu fees paid for the Project's impacts.

The Project Information Sheet has been amended as shown below:

**Project Description:** The Potato Slough Bridge Bearing Pads Project (Project) is located at the approach slabs on either side of Potato Slough Bridge on State Route 12 over Little Potato Slough... H-piles will be driven into the ground surface and cast-in-place concrete footings will be constructed with rebar placed at the H-pile connections. The footings will be 9-foot wide, 45-foot long, and 3-foot tall. Each footing will be placed 3 feet below ground surface, allowing for soil cover post-construction. Approximately 810 square feet (0.019 acre) associated with the H piles footprint will remain impervious surface post-construction. Once supports are installed, the existing bearing pads will be removed and replaced, and the impact area beneath the bridge will be seeded to restore vegetation.

No dewatering will occur within the Project area. Wet concrete will be placed into the wetland in dry conditions. The Project will permanently impact 0.019 acre and temporarily impact 0.15 acre of waters of the United States.

**California Integrated Water Quality System Impact Data:** The Project will permanently impact 0.019 acre of wetland habitat and temporarily impact 0.15 acre of wetland habitat from fill and excavation activities.

**Table 1: Total Project Fill/Excavation Temporary Impact<sup>1</sup> Quantity**

Aquatic Resource Type	Acres	Cubic Yards	Linear Feet
Wetland	0.15		

**Table 2: Total Project Fill/Excavation Permanent Physical Loss of Area Impact Quantity**

Aquatic Resource Type	Acres	Cubic Yards	Linear Feet
Wetland	0.019		

---

<sup>1</sup> Includes only temporary direct impacts to waters of the state and does not include area of temporary disturbance which could result in a discharge to waters of the state. Temporary impacts, by definition, are restored to pre-project conditions and therefore do not include a physical loss of area or degradation of ecological condition.

**Compensatory Mitigation:** To mitigate for the loss of 0.019 acre of wetland habitat, the Applicant shall purchase a minimum of 0.019 aquatic resource mitigation credits from a United States Army Corps of Engineers approved in lieu fee program. Prior to commencing construction, the Applicant shall provide evidence of all off-site compensatory mitigation to the Central Valley Water Board. At a minimum, compensatory mitigation must achieve a ratio of 1:1 for permanent impacts.

**Table 3: Compensatory Mitigation for Permanent Physical Loss of Area by Method** [Establishment (Est.), Enhancement (Enh.), Preservation (Pres.), Unknown]

<b>Aquatic Resource Type</b>	<b>Mitigation Type</b>	<b>Units</b>	<b>Est.</b>	<b>Enh.</b>	<b>Pres.</b>	<b>Unknown</b>
Wetland	ILF	Acres				0.019

**APPLICATION FEE RECEIVED:**

No fee was required for this amendment. Total fees of \$4,864.00 for the original Certification were received on 2 October 2020. The fee amount was determined as required by California Code of Regulations, title 23, sections 3383(b)(3) and 2200(a)(3), as was calculated as category A - Fill & Excavation Discharges (fee code 84) with the dredge and fill fee calculator.

**CENTRAL VALLEY REGIONAL WATER QUALITY CONTROL BOARD CONTACT:**

Nicholas White, Water Resource Control Engineer  
11020 Sun Center Drive, Suite 200  
Rancho Cordova, CA 95670-6114  
Nicholas.White@waterboards.ca.gov  
(916) 464-4856

**WATER QUALITY CERTIFICATION:**

I hereby issue an Order amending the existing Clean Water Act, Section 401 Technically Conditioned Water Quality Certification for the Potato Slough Bridge Bearing Pads Project (WDID#5B39CR00340A1). All other conditions and provisions of the original Water Quality Certification and any previously approved amendments remain in full force and effect, except as modified based on the conditions of this Order. Failure to comply with the terms and conditions of the original Water Quality Certification, previously approved amendments, or of this Order may result in suspension or revocation of the Water Quality Certification.

*Original Signed By James Marshall for:*

Patrick Pulupa  
Executive Officer

Attachment: Figure 1 – Project Impacts Map

cc: Distribution List, page 5

**DISTRIBUTION LIST**  
via email only

Marc Fugler (SPK-2018-00451)  
United States Army Corps of Engineers  
Sacramento District Office  
Regulatory Division  
SPKRegulatoryMailbox@usace.army.mil

Sam Ziegler  
United States Environmental Protection Agency  
Ziegler.Sam@epa.gov

Brian Hansen  
United States Fish & Wildlife Service  
Brian\_Hansen@fws.gov

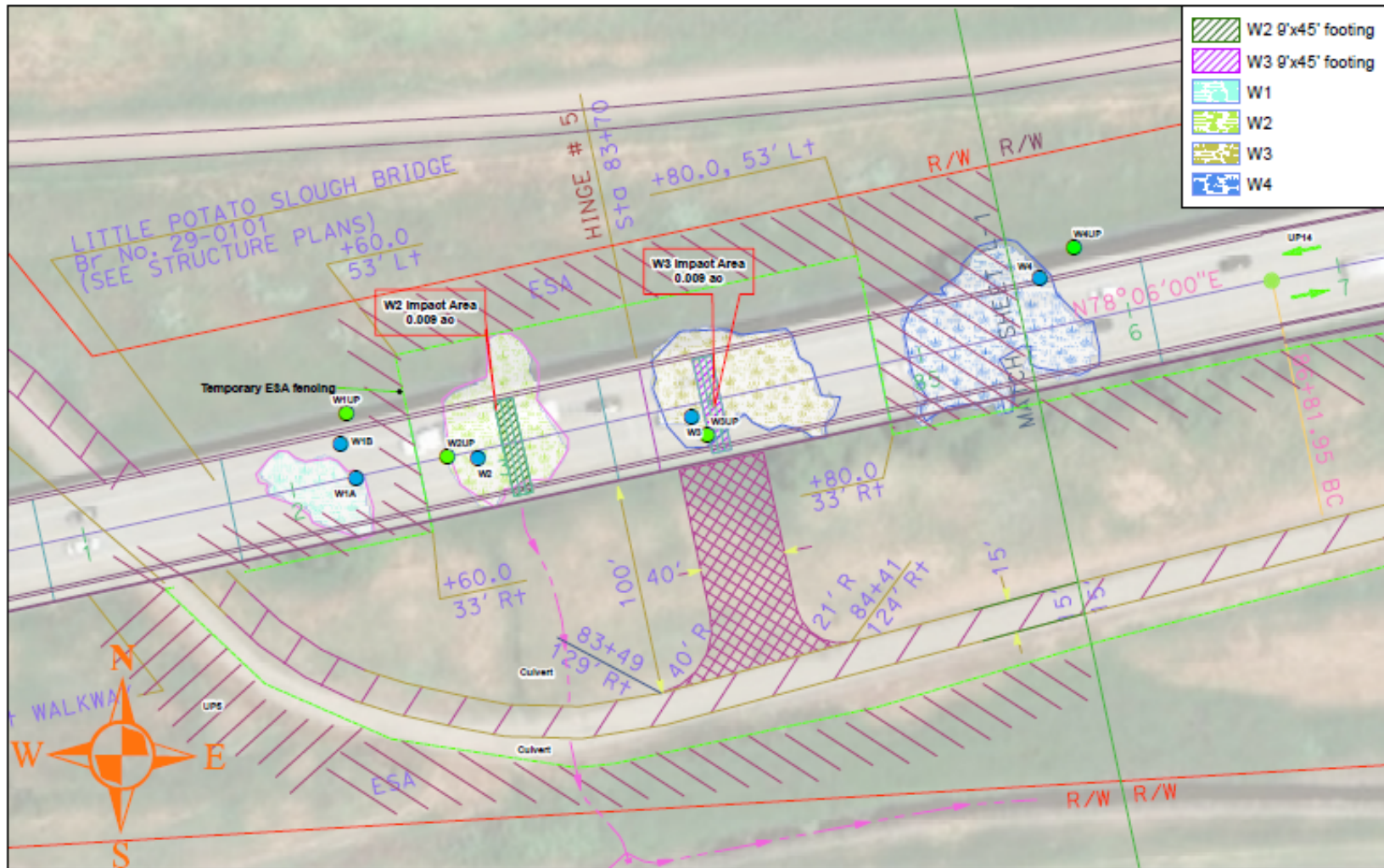
Stephanie Tadlock  
Unit Supervisor  
Central Valley Regional Water Quality Control Board, Sacramento Office  
Stephanie.Tadlock@waterboards.ca.gov

CWA Section 401 WQC Program  
Division of Water Quality  
State Water Resources Control Board  
StateBoard401@waterboards.ca.gov

Bill Jennings  
CA Sportfishing Protection Alliance  
DeltaKeep@aol.com

Christy Lafayette  
California Department of Transportation  
Christy.lafayette@dot.ca.gov

**Figure 1: Project Impacts Map**



1 inch = 0.01 miles