



---

## Central Valley Regional Water Quality Control Board

28 August 2024

Paul Spence  
Fulcrum Property  
1530 J Street #200  
Sacramento, CA 95814

Spencer Boyer  
Cook Engineering Inc.  
3203 Fitzgerald Road  
Rancho Cordova, CA 95742

**CERTIFIED MAIL**  
9589-0710-5270-0591-2584-43

**VIA MAIL**  
spencer.boyer@cookengineeringinc.com

### **NOTICE OF APPLICABILITY**

**WATER QUALITY ORDER 2003-0003-DWQ  
STATEWIDE WASTE DISCHARGE REQUIREMENTS FOR DISCHARGES TO LAND  
WITH A LOW THREAT TO WATER QUALITY  
FULCRUM PROPERTY AND COOK ENGINEERING, INC  
PORT OF SACRAMENTO OFFSITE IMPROVEMENTS PROJECT  
YOLO COUNTY**

On 31 July 2024, the Verux, Inc on behalf of Fulcrum Property and Cook Engineering, Inc submitted a Notice of Intent (NOI) to obtain coverage under Water Quality Order 2003-0003-DWQ, *Statewide General Waste Discharge Requirements for Discharges to Land with a Low Threat to Water Quality* (hereafter General Order) for construction dewatering at the above-referenced project. A revised NOI was submitted on 5 August 2024. The submittal contains all the information required to evaluate applicability of the General Order; therefore, the NOI is considered complete. Based on the information provided in the NOI, the discharge meets the conditions of the General Order. The discharge is hereby covered under State Water Resources Control Board (State Water Board) General Order and issued enrollee number **2003-0003-DWQ-0248**. Please include this number on all correspondence related to this discharge.

### **PROJECT LOCATION AND DESCRIPTION**

The Port of Sacramento Offsite Improvements Project (Project) is a sanitary sewer installation project. The utility lines are part of a new development north of Southport Parkway at Lake Washington in West Sacramento, Yolo County. The utility line runs through the project and extends east along Southport Parkway and south along Washington Boulevard as shown in **Attachment A**. The project consists of 13.2 acres of disturbances and requires groundwater dewatering as the groundwater elevations throughout the project site ranges between 2 and 8.5 feet (ft). Groundwater elevations

can vary seasonally and in response to rainfall events and rising and falling of the Sacramento River.

As part of the construction dewatering activities, 54 groundwater dewatering wells will be installed throughout the project footprint. These wells will be operated continuously throughout the utility installation to maintain a workable groundwater elevation of 2 ft below proposed excavation. The dewatering wells will ultimately direct flow to two on-site discharge basins for disposal via infiltration and evaporation. Dewatering water will also be used for onsite dust control and moisture conditioning of soil and/or aggregate base for construction uses throughout the project duration. Each basin will have a capacity of approximately 3.7 million gallons with 2 ft of freeboard. Basins will be located just north and south of Southport Parkway as shown on **Attachment B**. It is anticipated that dewatering activities will involve pumping between 312,000 and 3,667,000 gallons per day (gpd) continuously from the dewatering wells. Pumping is scheduled to start in August 2024, estimated to be ongoing through November 2024.

Discharges will be contained within the basins located on Assessor Parcel Numbers (APNs) 045-030-044 and 045-030-045, and there is no anticipated discharge to surface waters, storm drain systems, etc. The Sacramento River Deep Water Canal is located along the northern boundary of the project site and Lake Washington is to the west. The topography in the area is flat. It is anticipated that water removed from the dewatering operations will be relatively free of sediment and would not require any treatment at the surface.

Discharges will occur on property owned by Fulcrum Property. Cook Engineering, Inc. are the contractors responsible for the dewatering activities. This Notice of Applicability (NOA) authorizes the land application of construction dewatering water to the two basins and for construction use as described above. Fulcrum Property and Cook Engineering, Inc hereafter collectively referred to as Discharger, are responsible for compliance with the General Order.

The Water Quality Control Plan for the Sacramento River and San Joaquin River Basins, Fifth Edition, revised May 2018 (hereafter Basin Plan), designates beneficial uses, establishes water quality objectives, contains implementation plans and policies for protecting waters of the basin, and incorporates by reference plans and policies adopted by the State Water Board. Pursuant to §13263(a) of the California Water Code, waste discharge requirements must implement the Basin Plan.

## **FACILITY-SPECIFIC REQUIREMENTS**

The General Order and this NOA regulate construction dewatering for the Port of Sacramento Offsite Improvements Project.

1. Water generated during construction dewatering shall be disposed of as described in the Notice of Intent and in accordance with the requirements contained in the General Order.

2. Construction dewatering discharge at a location or in a manner different from that described in the NOI or this NOA is prohibited.
3. All technical reports required herein that involve evaluation, or other work requiring interpretation and proper application of engineering or geologic sciences, shall be prepared by or under the direction of persons registered to practice in California pursuant to California Business and Professions Code, section 6735, 7835, and 7835.1. As required by these laws, completed technical reports must bear the signature(s) and seal(s) of the registered professional(s) in a manner such that all work can be clearly attributed to the professional responsible for the work.
4. For construction dewatering projects, monitoring results shall be submitted on a semi-annual basis in accordance the General Order's Monitoring and Reporting Program (MRP). For the July through December reporting period, the monitoring report is due **February 15**. For the January through June reporting period, the monitoring report is due **August 15**. Monitoring shall include the approximate volume of discharge at each discharge location and date of each discharge (see the MRP included in the Order).
5. The Discharger shall submit the required annual fee (as specified in the annual billing issued by the State Water Board) until the NOA is officially terminated.
6. Failure to abide by the conditions of the General Order, including its monitoring and reporting requirements, and this letter authorizing applicability could result in enforcement actions, as authorized by provisions of the California Water Code.

## **DOCUMENT SUBMITTALS**

All monitoring reports and other correspondence should be converted to searchable Portable Document Format (PDF) and submitted electronically. Documents that are less than 50 MB should be emailed to: [centralvalleysacramento@waterboards.ca.gov](mailto:centralvalleysacramento@waterboards.ca.gov).

To ensure that your submittal is routed to the appropriate staff person, the following information should be included in the body of the email or any documentation submitted to the mailing address for this office:

**Facility Name:** Port of Sacramento Offsite Improvements Project, Yolo County  
**Program:** Non-15 Compliance  
**Order:** WQO 2003-0003-DWQ-0248  
**CIWQS Place ID:** 895930

Documents that are 50 MB or larger should be transferred to a CD, DVD, or flash drive and mailed to:

Central Valley Regional Water Quality Control Board  
ECM Mailroom  
11020 Sun Center Drive, Suite 200  
Rancho Cordova, CA 95670

Now that the NOA has been issued, the Board's Compliance and Enforcement section will take over management of your case. Brendan Kenny is your new point of contact for any questions about compliance with the Order. The enclosed transmittal sheet shall be included with each monitoring report. If you find it necessary to make a change to your permitted operations, Brendan will direct you to the appropriate Permitting staff. You may contact Brendan at (916) 464-4635 or at [brendan.kenny@waterboards.ca.gov](mailto:brendan.kenny@waterboards.ca.gov).

for Patrick Pulupa  
Executive Officer

Attachments:

Attachment A, Project Location Map  
Attachment B, Infiltration Basin Location Map

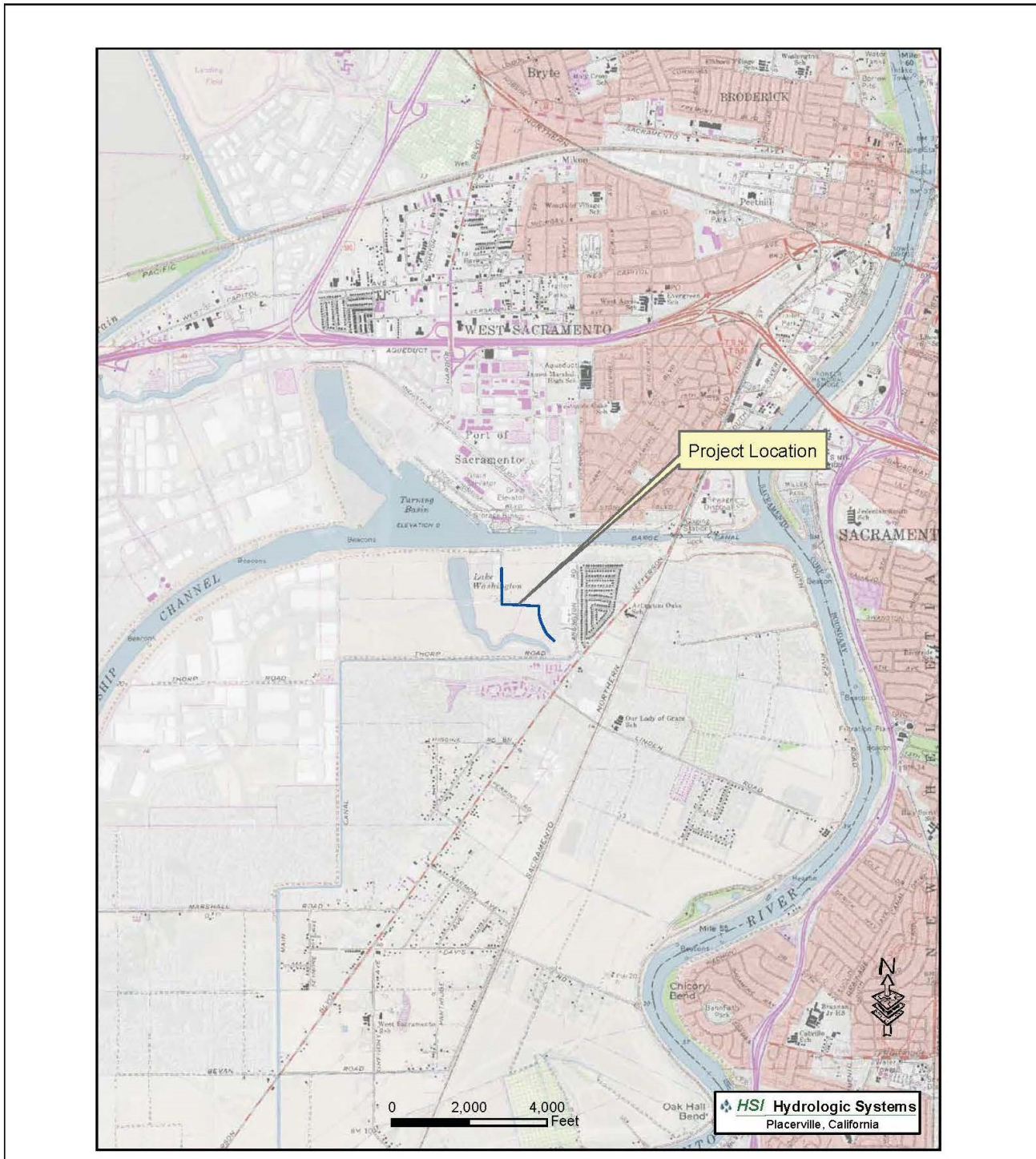
Enclosures:

Water Quality Order No. 2003-0003-DWQ  
Monitoring Report Submittal Transmittal Form

cc via email:

Yolo County Environmental Health Department  
Brendan Kenny, Central Valley Water Board  
Lyndsey Hendersen, Verux, Inc  
Rony Garber, Verux, Inc  
Spencer Boyer, Cook Engineering, Inc

ATTACHMENT A

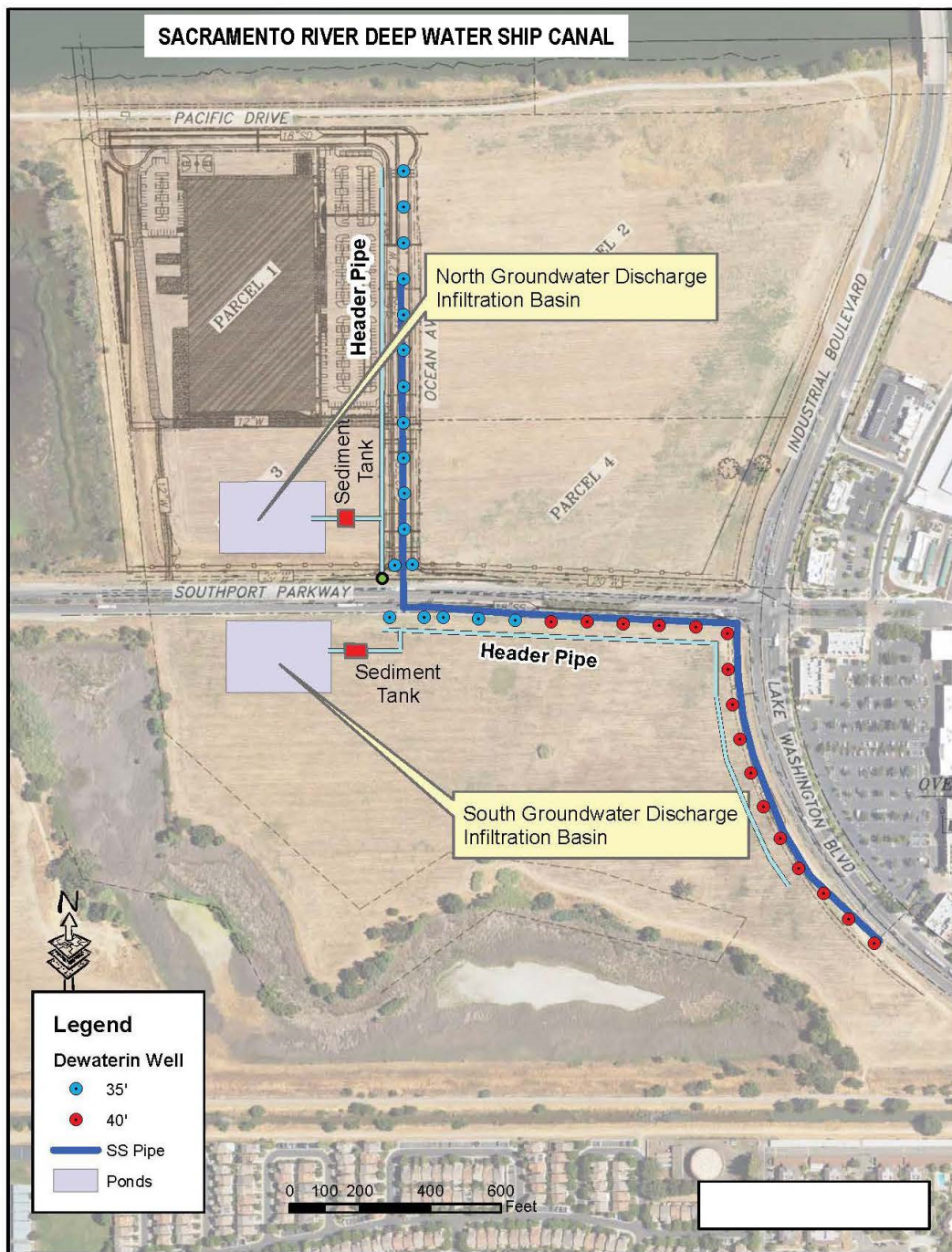


**PROJECT LOCATION MAP**  
Port of Sacramento Offsite Improvements Project  
Yolo County

Approximate  
Scale:  
As Noted  
Above



**ATTACHMENT B**



**INFILTRATION BASIN LOCATION MAP**  
Port of Sacramento  
Offsite Improvements Project  
Yolo County

Approximate  
Scale:  
As Noted  
Above