

## Central Valley Regional Water Quality Control Board

19 June 2026

JEN California 34 LLC  
1478 Stone Point Drive, Suite 530  
Roseville, CA 95661

### NOTICE OF APPLICABILITY

**WATER QUALITY ORDER 2003-0003-DWQ-0273  
STATEWIDE WASTE DISCHARGE REQUIREMENTS FOR DISCHARGES TO LAND  
WITH A LOW THREAT TO WATER QUALITY  
JEN CALIFORNIA 34 LLC,  
MACHADO RANCH, UNITS 3 – 6 PROJECT**

On 9 June 2026, the Central Valley Regional Water Quality Control Board (Central Valley Water Board) received a Notice of Intent (NOI) from ENGEIO Incorporated on behalf of JEN California 34 LLC (hereafter Discharger), to obtain coverage under Statewide General Waste Discharge Requirements for Discharges to Land with a Low Threat to Water Quality (WQ Order 2003-0003-DWQ or General Order) for discharge to land of encountered groundwater derived from construction dewatering associated with a residential development. The submittal included a completed NOI form, Form 200, project maps, and a letter summarizing the project scope and proposed site activities.

The submittal contains all the information required to evaluate the applicability of the discharge under the General Order. Based on the information provided in the NOI and associated documents, the proposed discharge meets the conditions of the General Order. The discharge is hereby covered under the General Order and assigned enrollee number 2003-0003-DWQ-0273. Please include this number on all correspondence related to this discharge. A copy of the Low Threat General Order is available on [Central Valley Water Board's website](https://www.waterboards.ca.gov/board%20decisions/adopted%20orders/water%20quality/2003/wqo/wqo2003-0003.pdf) at: ([https://www.waterboards.ca.gov/board decisions/adopted orders/water quality/2003/wqo/wqo2003-0003.pdf](https://www.waterboards.ca.gov/board%20decisions/adopted%20orders/water%20quality/2003/wqo/wqo2003-0003.pdf)).

### PROJECT DESCRIPTION

The Machado Ranch, Units 3 – 6 project is located southeast of the intersection of Woodward Avenue and South Airport Way in Manteca (Attachment A). The site is bounded by South Airport Way to the east, agricultural land to the south, and existing residential developments to the west and north. The proposed project includes the

NICHOLAS AVDIS, CHAIR | PATRICK PULUPA, EXECUTIVE OFFICER

construction of single-family residences, underground utilities, paved streets, a central park with a stormwater basin, landscaping, and associated improvements. As currently proposed, pumped groundwater from the in-tract improvements at the project will be discharged to a temporary on-site basin located in the southeastern portion of the site.

Due to the anticipated shallow depth of groundwater, estimated between 5 and 15 feet below groundwater surface (bgs) in the project vicinity, temporary construction dewatering may be necessary. Groundwater extracted through the dewatering process will be to be discharged to a temporary percolation on-site basin. The temporary basin will be approximately 11.5 acres in area. The basin will be surrounded by an approximately 4-foot-high earthen berm to allow a minimum of at least 1 vertical foot of freeboard. Berm side slopes will be graded at 3:1 (horizontal:vertical) or flatter. According to the NOI, the maximum discharge rate is estimated at approximately 3.5 million gallons per day (MGD) during the initial drawdown. After the initial drawdown, average discharge rates are estimated at approximately 1.2 MGD. The project is expected to begin in July 2026 through Summer of 2027.

The Water Quality Control Plan for the Sacramento River and San Joaquin River Basins, Fifth Edition, revised February 2019 (hereafter Basin Plan), designates beneficial uses, establishes water quality objectives, contains implementation plans and policies for protecting waters of the basin, and incorporates by reference plans and policies adopted by the State Water Board. Pursuant to §13263(a) of the California Water Code, waste discharge requirements must implement the Basin Plan.

## **FACILITY-SPECIFIC REQUIREMENTS**

The General Order and this NOA cover the discharge of dewatered groundwater to a basin located within the Machado Ranch, Units 3 – 6 Project in San Joaquin County. The Discharger shall comply with the requirements specified in the General Order and the facility-specific requirements listed below.

1. Discharge of construction dewatering at a location or in a manner different from that described in the NOI, Discharger's Monitoring Plan (DMP), or this NOA is prohibited.
2. In accordance with the General Order's Monitoring and Reporting Program all monitoring results, including volume and location of discharges, shall be submitted on a semi-annual basis. For the July through December reporting period, the monitoring data shall be submitted by 15 February of each year. For the January through June reporting period, the monitoring data shall be submitted by 15 August of year. Monitoring shall include the approximate volume of discharge at each discharge location and date of each discharge.
3. The Discharger shall submit the required annual fee (as specified in the annual billing statement issued by the State Water Resources Control Board) until this NOA is officially terminated.

Please review this NOA carefully to ensure that it completely and accurately reflects the details of the proposed discharge. Failure to comply with the requirements of this NOA, the General Order, or applicable monitoring requirements may result in enforcement action as authorized by provisions of the California Water Code, which could include civil liability.

### **DOCUMENT SUBMITTAL**

All monitoring reports and other correspondence should be converted to a searchable Portable Document Format (PDF) and submitted electronically. Documents that are less than 50 MB should be emailed to: [centralvalleysacramento@waterboards.ca.gov](mailto:centralvalleysacramento@waterboards.ca.gov).

To ensure that your submittal is routed to the appropriate staff person, the following information should be included in the body of the email or any documentation submitted to the mailing address for this office:

**Facility Name:** Machado Ranch, Units 3 - 6 Project  
**Program:** Groundwater Quality Protection Program  
**Order:** 2003-0003-DWQ-0273  
**CIWQS Place ID:** 906998

Documents that are 50 MB or larger should be transferred to a CD, DVD, or flash drive and mailed to:

Central Valley Regional Water Quality Control Board  
ECM Mailroom  
11020 Sun Center Drive, Suite 200  
Rancho Cordova, CA 95670

All documents, including responses to inspections and written notifications, submitted to comply with this NOA shall be directed, via the paperless office system, to the Compliance and Enforcement Unit, attention to Howard Hold. Mr. Hold can be reached at (916) 464-4679 or [Howard.Hold@waterboards.ca.gov](mailto:Howard.Hold@waterboards.ca.gov).

Any person aggrieved by this action of the Central Valley Water Board may petition the State Water Resources Control Board to review the action in accordance with California Water Code section 13320 and California Code of Regulations, title 23, sections 2050 and following. The State Water Resources Control Board must receive the petition by 5:00 p.m., 30 days after the date of this NOA, except that if the thirtieth day following the date of this Order falls on a Saturday, Sunday, or state holiday, the petition must be received by the State Water Resources Control Board by 5:00 p.m. on the next business day. [Copies of the law and regulations applicable to filing petitions](#) may be found on the internet or will be provided upon request. ([http://www.waterboards.ca.gov/public\\_notices/petitions/water\\_quality](http://www.waterboards.ca.gov/public_notices/petitions/water_quality)).

for Patrick Pulupa  
Executive Officer

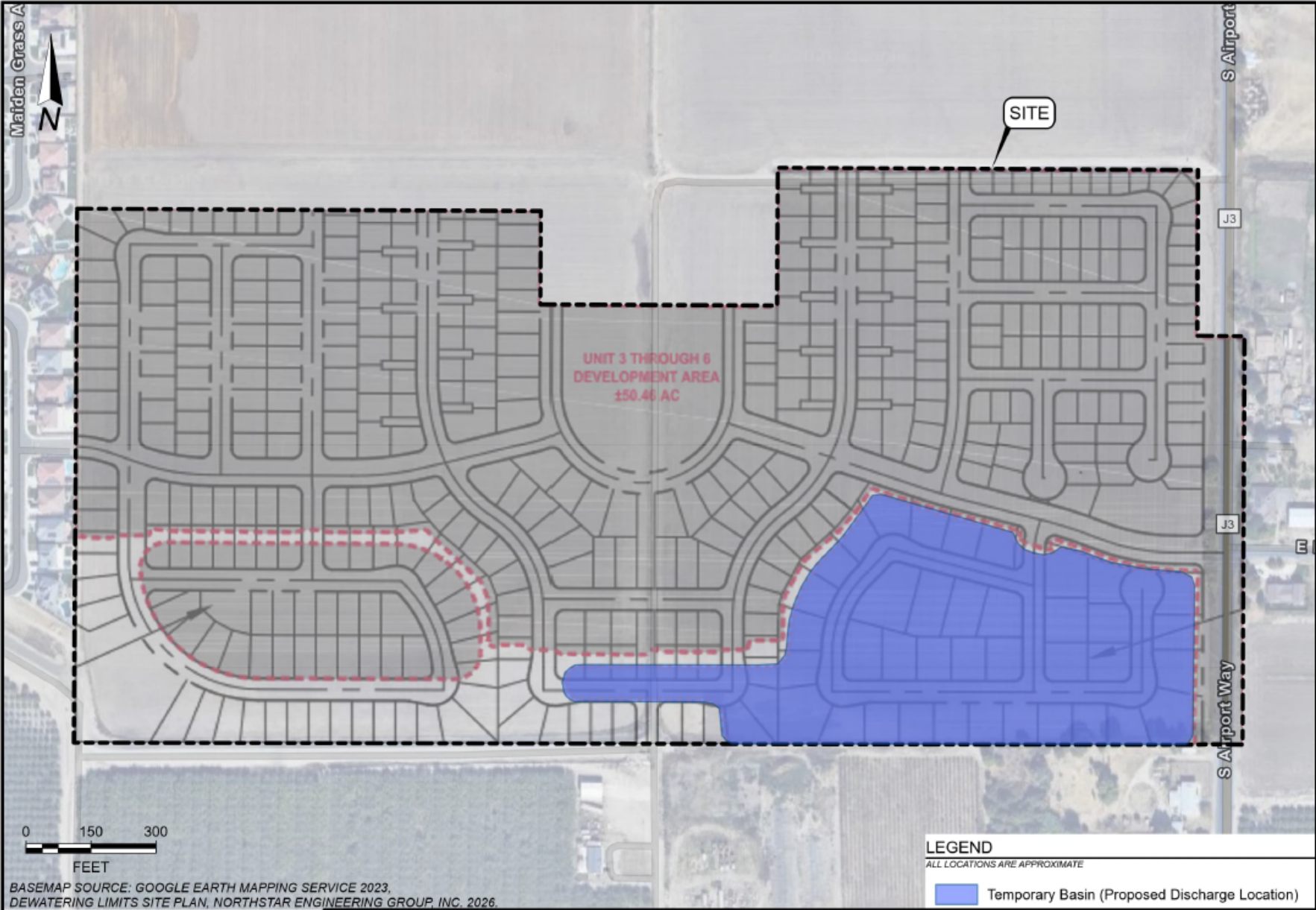
Attachment A: Site Location Map

Enclosure: Statewide General Waste Discharge Requirements for Discharges to Land with a Low Threat to Water Quality (WQ Order 2003-0003-DWQ)

cc w/o encl: San Joaquin County Environmental Health Department, Stockton

cc w/ encl: Victoria Drake, ENGEIO Incorporated

ATTACHMENT A – SITE LOCATION MAP



ATTACHMENT A  
SITE LOCATION MAP – MACHADO RANCH, UNITS 3 - 6 PROJECT

Figure Source: Notice of Intent dated 4 June 2026