



---

## Central Valley Regional Water Quality Control Board

27 March 2026

The City of Mountain House  
Attn: Karen Morgan, Utility Manager  
251 E. Main Street  
Mountain House, CA 95931

**CERTIFIED MAIL**  
**9589 0710 5270 3719 4246 69**

### NOTICE OF APPLICABILITY

#### WAIVER OF REPORT OF WASTE DISCHARGE AND WASTE DISCHARGE REQUIREMENTS FOR SPECIFIC TYPES OF DISCHARGE WITHIN THE CENTRAL VALLEY REGION, THE CITY OF MOUNTAIN HOUSE, ASR EXPLORATORY TEST BORE PROGRAM SAN JOAQUIN COUNTY

On 6 March 2026, the City of Mountain House (Discharger) submitted a Notice of Intent to obtain coverage under the *Waiver of Report of Waste Discharge and Waste Discharge Requirements for Specific Types of Discharge within the Central Valley Region*, Resolution R5-2023-0061 (the Waiver). The submittal contained all the information required to evaluate the applicability of the Waiver; therefore, the NOI was considered complete and the discharge met the conditions of the Waiver. The discharge is hereby covered under the Waiver and assigned enrollee number **R5-2023-0061-0045**. Please include this number in all correspondence related to this discharge. A copy of the Low Threat Waiver is enclosed and also available on the [Central Valley Regional Water Quality Control Board's website](https://www.waterboards.ca.gov/centralvalley/board_decisions/adopted_orders/waivers/r5-2023-0061.pdf). ([https://www.waterboards.ca.gov/centralvalley/board\\_decisions/adopted\\_orders/waivers/r5-2023-0061.pdf](https://www.waterboards.ca.gov/centralvalley/board_decisions/adopted_orders/waivers/r5-2023-0061.pdf)).

#### Project Location and Description

The Discharger plans to drill two 1,200-foot deep test bore holes to obtain downhole data on stratigraphy and aquifer properties for the potential future installation of Aquifer Storage and Recovery wells. The two boreholes are planned to be off of Byron Road (nearest cross street is Bethany Road) and are located on City property and easements (Attachment A). Drilling muds and boring wastes will be discharged to an undeveloped parcel located adjacent to the City's wastewater treatment plant (WWTP). The Discharger will enclose up to 3-acres within the parcel with a minimum 1-foot-high berm

NICHOLAS AVDIS, CHAIR | PATRICK PULUPA, EXECUTIVE OFFICER

above the highest point of the area. If the borehole cuttings material is flowable, it is allowed to be spread within the 3-acre area but shall not cross over the berm. If the material piles into mounds, the Discharger shall evenly spread the material within the bermed disposal area.

Extracted groundwater will be discharged to two areas. Prior to May 15, discharges will be to the adjacent existing 5-acre South Pond overflow at the City's Water Quality Basin. The South Pond is an overflow area for the City's stormwater drainage system. The inlet and outlet will be plugged with sandbags during this time of land application to prohibit any discharge from leaving the basin. If a major storm is anticipated in the forecast, discharges at this location would cease and would be directed to the WWTP. The entire project is expected to be completed within four months.

The project is within the jurisdiction of the Central Valley Water Quality Control Plan for the Sacramento River and San Joaquin River Basins, Fifth Edition, revised December 2020 (hereafter Basin Plan). The Basin Plan designates beneficial uses, establishes water quality objectives, contains implementation plans and policies for protecting waters of the Basin, and incorporates by reference plans and policies adopted by the State Water Resources Control Board. Pursuant to §13263(a) of the California Water Code (CWC), waste discharge requirements must implement the Basin Plan.

### **Facility Specific Requirements**

Please familiarize yourself with the contents of the Waiver, including the Conditions of Discharge (Attachment A of the Waiver). The discharge must be managed in accordance with the requirements contained in the Conditions of Discharge and with the information submitted in your application and this Notice of Applicability (NOA). The City of Mountain House is responsible for compliance with the waiver and must provide sufficient oversight to ensure compliance and prompt reporting of any noncompliance. Upon completion of the discharge activities and confirmation that all discharged well water has percolated and/or evaporated, the Dischargers shall notify the Central Valley Water Board to request termination of coverage under the Waiver.

### **Document Submittals**

All monitoring reports and other correspondence should be converted to searchable Portable Document Format (PDF) and submitted electronically. Documents that are less than 50 MB should be emailed to:

[centralvalleysacramento@waterboards.ca.gov](mailto:centralvalleysacramento@waterboards.ca.gov).

To ensure that your submittal is routed to the appropriate staff person, the following information must be included in the body of the email or any documentation submitted to the mailing address for this office:

Facility Name: ASR Exploratory Test Bore Program  
Program: Non-15 Compliance  
Order: R5-2023-0061-0045  
CIWQS Place ID: 905811

Documents that are 50 MB or larger must be transferred to a CD, DVD, or flash drive and mailed to:

Central Valley Regional Water Quality Control Board  
ECM Mailroom  
110020 Sun Center Drive, Suite 200  
Rancho Cordova, CA 95670

Now that the NOA has been issued, the Board's Compliance and Enforcement section will take over management of your case. Howard Hold is your point of contact for any questions about the Waiver. If you find it necessary to make a change to your permitted operations, Howard will direct you to the appropriate Permitting staff. You may contact Howard at [howard.hold@waterboards.ca.gov](mailto:howard.hold@waterboards.ca.gov).

for Patrick Pulupa  
Executive Officer

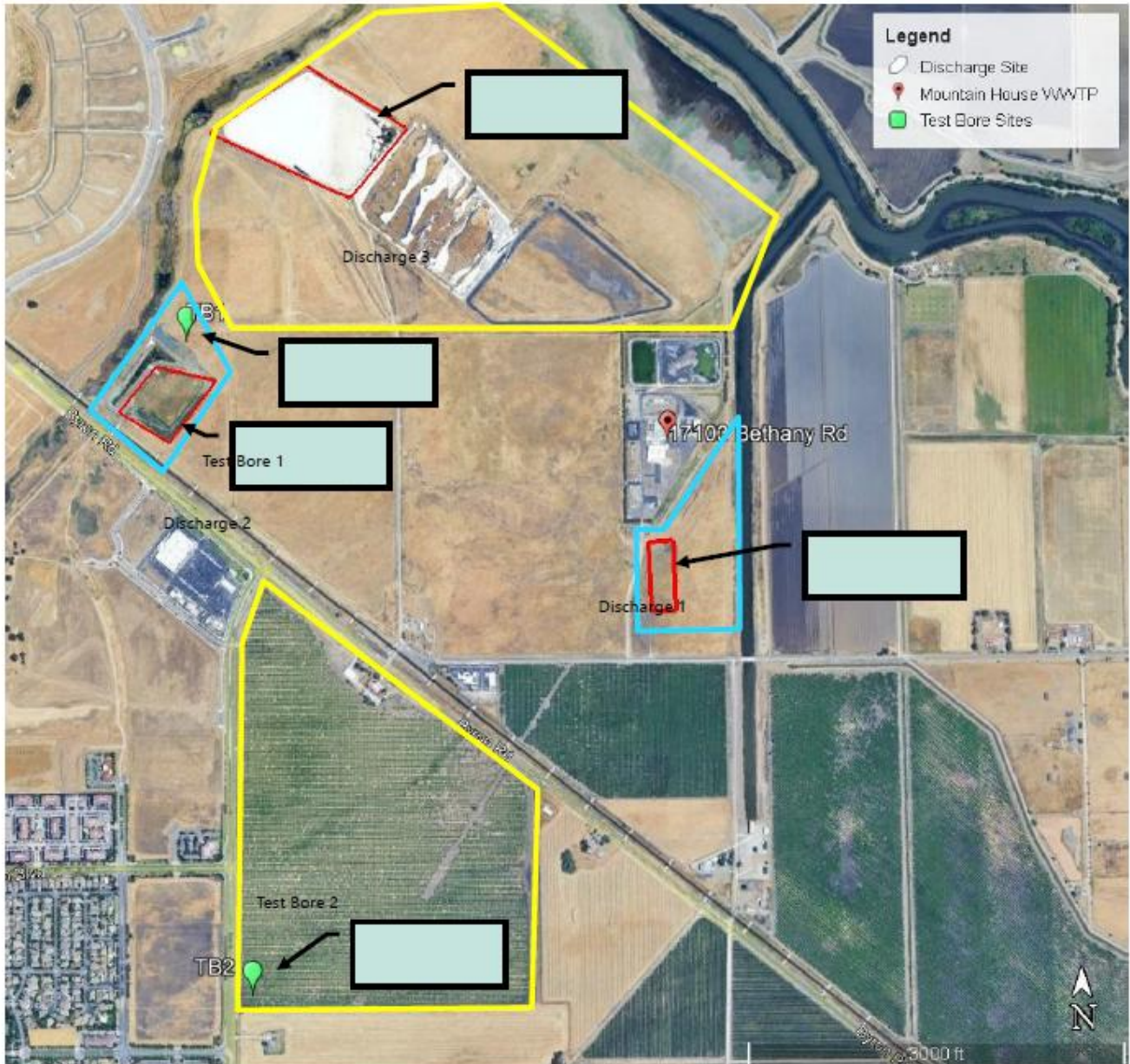
Enclosures: Waiver Order R5-2023-0061

cc w/encl: Sarah Rhodes, Woodard & Curran

cc w/o encl: San Joaquin County Environmental Health Department, Stockton

ORDER NO. R5-2023-0061-0045

ATTACHMENT A



**Figure 1: Test Bore Sites and Discharge Sites**

Blue outlines designate City-owned parcels.

Yellow outlines designate private-owned parcels where City has agreements and easements with landowners.

Red outlines designate land application discharge areas.