

---

## Central Valley Regional Water Quality Control Board

---

### WATER QUALITY ORDER NO. R5-2026-XXXX WASTE DISCHARGE REQUIREMENTS

---

**Effective Date:** XX June 2026

**Expiration Date:** XX June 2031

Reg. Meas. ID:	463034
Place ID:	903370
WDID No.:	5A34CR00931

**Program Type:** Resource Extraction and Mining

**Project Type:** Hard Rock Mines

**Project:** Aspen VIII and IX Expansion Project (Project)

**Applicant:** Teichert Materials

**Applicant Contact:** Nick Cronenwett  
Teichert Materials  
3500 American River Drive  
Sacramento, CA 95864  
Phone: (916) 307-7224  
Email: [ncronenwett@teichert.com](mailto:ncronenwett@teichert.com)

**Applicant's Agent:** Sarah VonderOhe  
Madrone Ecological Consulting  
8421 Auburn Blvd Ste 248  
Citrus Heights, CA 95610  
Phone: (916) 822-3225  
Email: [svonderohe@madroneeco.com](mailto:svonderohe@madroneeco.com)

**Water Board Staff:** Nicholas Savino  
Environmental Scientist  
11020 Sun Center Drive, Suite 200  
Rancho Cordova, CA 95670  
Phone: (916) 464-4920  
Email: [Nicholas.Savino@waterboards.ca.gov](mailto:Nicholas.Savino@waterboards.ca.gov)

**Water Board Contact Person:** If you have any questions, please call Regional Water Quality Control Board, Central Valley Region (Central Valley Water Board) Staff listed above or (916) 464-3291 and ask to speak with the Water Quality Certification Unit Supervisor.

**Table of Contents**

FINDINGS ..... 3

REQUIREMENTS ..... 15

CERTIFICATION..... 27

Attachment A: Project Maps.....A-1

Attachment B: Receiving Waters, Impacts and Mitigation Information .....B-1

Attachment C: CEQA Findings of Fact..... C-1

Attachment D: Reports and Notification Requirements ..... D-1

Attachment E: Signatory Requirements .....E-1

Attachment F: Project Deviation Procedures..... F-1

## FINDINGS

The California Regional Water Quality Control Board, Central Valley Region (Central Valley Water Board) finds the following:

### 1. Application:

The Central Valley Water Board received an application from Teichert Materials (Permittee) on 24 October 2025. These Waste Discharge Requirements (Order) are for the purpose described in the application and supplemental information submitted by the Permittee. The application was deemed complete on 20 November 2025. Central Valley Water Board staff requested additional information necessary to supplement the contents of the application, and the Permittee responded to the request for supplemental information on 29 January 2026.

### 2. Project Description:

The Project will expand aggregate surface mining operations at the existing Teichert Materials Aspen VIII and Aspen IX mining sites. The expansion areas will add 63.26 acres of surface mining operations for sand and gravel near the northwest corner of Aspen VIII (Aspen VIII Expansion Area) and 182.38 acres to Aspen IX (Aspen IX Expansion Area), thereby expanding the total mine area by 245.6 acres.

The Project abuts the Elder Creek Open Space Preserve, a 92-acre conservation and preservation area that was established in 2017 as a condition of the U.S. Army Corps of Engineers (USACE) Section 404 permit for the existing mine. As a part of the expansion, Teichert is proposing to extend its existing electric conveyor belt system over Elder Creek to transport aggregate materials from Aspen IX to the Perkins processing facility, which will require a crossing of Elder Creek. The crossing will be placed in an area that was excluded from the Elder Creek Preserve when it was established in anticipation of construction of such a crossing. The crossing, which will consist of a free-span rail-car bridge 50 feet long by 28 feet wide, will be installed without direct effects to Elder Creek. Since the crossing will not directly affect Elder Creek, the creek is considered avoided. During bridge installation, the construction crew will be informed of the requirement to avoid any direct impact to the creek below the ordinary high-water mark and appropriate measures, such as fencing and signage, will be in place to ensure that no activity directly affects the creek.

Teichert Materials will mine the expansion areas over four phases: Phases D1, D2, E, and F. After mining operations are complete, the site will be reclaimed to open space grassland. The Project is a covered activity under the South Sacramento Habitat Conservation Plan (SSHCP).

### 3. Project Location:

County: Sacramento

Nearest City: Sacramento

Section 27, 28, 33, 34 Township 8 North, Range 6 East, MDB&M.

Latitude: 38.510833° and Longitude: -121.3175°

Maps showing the Project location are found in Attachment A of this Order.

#### 4. Project Impact, Receiving Water and Beneficial Uses:

Project impact and receiving waters information can be found in Attachment B. Table 1 of Attachment B shows the receiving waters and beneficial uses of waters of the state impacted by the Project. Individual impact location and quantity is shown in Table 2 of Attachment B.

#### 5. Description of Direct Impacts to Waters of the State:

The Project site supports 16.19 acre of waters of the state, including vernal pools, seasonal wetlands, a seasonal pond, and a portion of Elder Creek. While Elder Creek will be avoided, mining operations will permanently impact all other waters of the state located on the Project site.

Total Project fill/excavation quantities for all impacts are summarized in Table 1. Permanent impacts are categorized as those resulting in a physical loss in area and also those degrading ecological condition.

**Table 1: Total Project Fill/Excavation Quantity for Permanent Physical Loss of Area Impacts**

Aquatic Resources Type	Acres	Cubic Yards	Linear Feet
Vernal Pool	12.98	20,941	
Wetland	3.12	5,038	
Pond	0.04	72	

#### 6. Description of Indirect Impacts to Waters of the State:

The Central Valley Water Board recognizes the potential for indirect impacts to waters of the state associated with the Project. During bridge installation, the construction crew will be informed of the requirement to avoid any direct impacts to Elder Creek below the ordinary high-water mark. Appropriate measures, such as fencing and signage, will be in place to ensure that no activity directly affects Elder Creek. The Permittee would implement erosion control measures, and a Stormwater Pollution Prevention Plan (SWPPP), as described in the Avoidance and Minimization Measures, to ensure that the Project would avoid and minimize erosion, sedimentation, and turbidity in waters of the state at the Project site.

Project construction activities would require the use of limited quantities of common hazardous substances, such as gasoline and diesel fuel, oils and lubricants,

hydraulic fluid, and solvents to maintain vehicles and motorized equipment. The improper use, storage, handling, transport or disposal of hazardous materials during construction could result in an accidental release exposing construction workers, the public and the environment, including soil and/or ground or surface water. The Permittee and its contractors would comply with regulatory requirements for the safe transport, use, storage, handling and disposal of hazardous materials to ensure hazardous materials do not enter waters of the state at the Project site.

## 7. Fees Received:

An application fee of \$4,212.00 was received on 30 October 2025. The fee amount was determined as required by California Code of Regulations, title 23, section 2200(a)(3) and was calculated as Category A - Fill & Excavation Discharges (Fee Code 84) with the dredge and fill fee calculator. An additional fee of \$365,465.00 based on total Project impacts was received on 29 January 2026.

**Annual Fees:** This Order is subject to annual billing based on the fee schedule in effect at the time of billing. Annual billing will continue until the Project, including monitoring, is complete and the Water Board receives an acceptable request for a Notice of Project Complete Letter (see Attachment D). Invoices are usually sent out at the end of each calendar year.<sup>1</sup>

To stop annual billing, the Permittee must request a Notice of Project Complete Letter from the Water Board. Water Board staff will verify if the conditions of the Certification are met and may conduct a site visit to confirm compliance.

For more information on fees, visit the [State Water Board's Water Quality Fees website](https://www.waterboards.ca.gov/resources/fees/water_quality/) ([https://www.waterboards.ca.gov/resources/fees/water\\_quality/](https://www.waterboards.ca.gov/resources/fees/water_quality/)), under Water Quality Certification (WQC) Program Fees.

## 8. Avoidance and Minimization:

No alternatives analysis is required because the Project was conducted in accordance with a watershed plan that has been approved by the Central Valley Water Board and analyzed in an environmental document that includes a sufficient alternatives analysis, monitoring provisions, and guidance on compensatory mitigation opportunities

According to the Permittee, the following measures will be in place during construction activities to avoid, reduce, and minimize impacts to waters of the state:

**BMP-1 (Construction Fencing):** Orange construction fencing will be installed to ensure that ground disturbance does not extend beyond the allowed construction footprint (i.e., the limit of project construction plus equipment staging areas and

---

<sup>1</sup> Annual invoices are issued for projects active for any amount of time in the current fiscal year (1 July – 30 June).

access roads). Plan Permittees and Third-Party Project Proponents implementing ground-disturbing Covered Activities will mark the outer boundary of any Preserve Setback or Stream Setback adjacent to or within the project site with orange construction fencing prior to ground disturbance. This fencing will remain in place until project completion, as identified by the Plan Permittee.

**BMP-2 (Erosion Control):** Plan Permittees and Third-Party Project Proponents implementing ground-disturbing Covered Activities will install temporary control measures for sediment, stormwater, and pollutant runoff as required by the Plan Permittee to protect water quality and species habitat. Silt fencing or other appropriate sediment control device(s) will be installed downslope of any Covered Activity that disturbs soils.

Fiber rolls and seed mixtures used for erosion control will be certified as free of viable noxious weed seed. As discussed in Section 5.4.2, Covered Species Take Avoidance and Minimization Measures, erosion controls installed in or adjacent to Plan Area modeled habitat for giant gartersnake (*Thamnophis gigas*), western pond turtle (*Actinemys marmorata*), California tiger salamander (California tiger salamander), or western spadefoot (see Chapter 3) must be of appropriate design and materials that will not entrap the species (e.g., not contain mesh netting). Regular monitoring and maintenance of the project's erosion control measures will be conducted until project completion to ensure effective operation of erosion control measures.

**BMP-3 (Equipment Storage and Fueling):** Plan Permittees and Third-Party Project Proponents implementing ground-disturbing Covered Activities will ensure that equipment storage and staging will occur in the development footprint only (not sited in any existing on-site Preserve, planned on-site Preserve, Preserve Setback, Stream Setback, or aquatic land cover type). Fuel storage and equipment fueling will occur away from waterways, stream channels, stream banks, and other environmentally sensitive areas within the development footprint.

However, certain equipment storage and fueling activities can be allowed on Preserves within habitat reestablishment/establishment sites if no location outside of the site is available. If a Covered Activity results in a spill of fuel, hydraulic fluid, lubricants, or other petroleum products, the spill will be absorbed and waste disposed of in a manner to prevent pollutants from entering a waterway, Preserve, Preserve Setback, or Stream Setback.

**BMP-4 (Erodible Materials):** Plan Permittees and Third-Party Project Proponents implementing Covered Activities must not deposit erodible materials into waterways. Vegetation clippings, brush, loose soils, or other debris material will not be stockpiled within stream channels or on adjacent banks. Erodible material must be disposed of such that it cannot enter a waterway, Preserve,

Preserve Setback, Stream Setback, or aquatic land cover type. If water and sludge must be pumped from a subdrain or other structure, the material will be conveyed to a temporary settling basin to prevent sediment from entering a waterway.

**BMP-5 (Dust Control):** Plan Permittees and Third-Party Project Proponents implementing ground-disturbing Covered Activities will water active construction sites regularly, if warranted, to avoid or minimize impacts from construction dust on adjacent vegetation and wildlife habitats. No surface water will be used from aquatic land covers; water will be obtained from a municipal source or existing groundwater well.

**BMP-6 (Construction Lighting):** Plan Permittees and Third-Party Project Proponents implementing ground-disturbing Covered Activities will direct all temporary construction lighting (e.g., lighting used for security or nighttime equipment maintenance) away from adjacent natural habitats, and particularly Riparian and Wetland habitats and wildlife movement areas.

**BMP-7 (Biological Monitor):** If a Covered Activity includes ground disturbance within Covered Species modeled habitat, an approved biologist will be on site during the period of ground disturbance, and may need to be on site during other construction activities depending on the Covered Species affected. After ground-disturbing project activities are complete, the approved biologist will train an individual to act as the on-site construction monitor for the remainder of construction, with the concurrence of the Permitting Agencies. The on-site monitor will attend the training described in BMP-8. The approved biologist and the on-site monitor will have oversight over implementation of Avoidance and Minimization Measures, and will have the authority to stop activities if any of the requirements associated with those measures are not met. If the monitor requests that work be stopped, the Wildlife Agencies will be notified within one working day by email. The approved biologist and/or on-site monitor will record all observations of listed species on California Natural Diversity Database field sheets and submit them to the California Department of Fish and Wildlife. The approved biologist or on-site monitor will be the contact source for any employee or contractor who might inadvertently kill or injure a Covered Species or who finds a dead, injured or entrapped individual. The approved biologist and on-site monitor's names and telephone numbers will be provided to the Wildlife Agencies prior to the initiation of ground-disturbing activities. Refer to species-specific measures for details on requirements for biological monitors.

**BMP-8 (Training of Construction Staff):** A mandatory Worker Environmental Awareness Program will be conducted by an approved biologist for all construction workers, including contractors, prior to the commencement of construction activities. The training will include how to identify Covered Species

that might enter the construction site, relevant life history information and habitats, SSHCP and statutory requirements and the consequences of non-compliance, the boundaries of the construction area and permitted disturbance zones, litter control training, and appropriate protocols if a Covered Species is encountered. Supporting materials containing training information will be prepared and distributed by the approved biologist. When necessary, training and supporting materials will also be provided in Spanish. Upon completion of training, construction personnel will sign a form stating that they attended the training and understand all of the Avoidance and Minimization Measures. Written documentation of the training must be submitted to the Implementing Entity within 30 days of completion of the training, and the Implementing Entity will provide this information to the Wildlife Agencies.

**BMP-10 (Revegetation):** Plan Permittees and Third-Party Project Proponents implementing ground-disturbing Covered Activities will revegetate any cut-and-fill slopes with native or existing non-invasive, non-native plants (e.g., non-native grasses) suitable for the altered soil conditions and in compliance with EDGE-2 and EDGE-8, if applicable.

**BMP-11 (Speed Limit):** Project-related vehicles will observe the posted speed limits on paved roads and a 10-mile-per-hour speed limit on unpaved roads and during travel in project areas. Construction crews will be given weekly tailgate instruction to travel only on designated and marked existing, cross-country, and project-only roads.

**STREAM-2 (Urban Development Area (UDA) Stream Setbacks):** A 100-foot setback measured from the top of the bank on both sides of the stream channel will be applied. If a stream reach supports woody riparian vegetation, the setback will be equal to the riparian edge plus 25 feet or will be the setback defined above, whichever is greater. If trails are located within the Stream Setback, the nearest edge of the trail will be located at least 50 feet from the top of the bank.

**SPECIES-1 (Litter Removal Program):** A litter control program will be instituted for the entire project site. All workers will ensure that their food scraps, paper wrappers, food containers, cans, bottles, and other trash are deposited in covered or closed trash containers. All garbage will be removed from the project site at the end of each workday, and construction personnel will not feed or otherwise attract wildlife to the area where construction activities are taking place.

**SPECIES-2 (No Pets in Construction Areas):** To avoid harm and harassment of native species, workers and visitors will not bring pets onto a project site.

**SPECIES-3 (Take Report):** If accidental injury or death of any Covered Species occurs, workers will immediately inform the approved biologist or on-site monitor

and site supervisor. The approved biologist or on-site monitor will phone the appropriate contact person at the Implementing Entity. The Implementing Entity will immediately contact the Wildlife Agencies by telephone. A memorandum will be provided to the Implementing Entity and Wildlife Agencies within 1 working day of the incident. The report will provide the date and location of the incident, number of individuals taken, the circumstances resulting in the take, and any corrective measures taken to prevent additional take.

**SPECIES-4 (Post-Construction Compliance Report):** A post-construction compliance report will be submitted to the SSHCP Implementing Entity within 30 calendar days of completion of construction activities or within 30 calendar days of any break in construction activity that lasts more than 30 days. The report will detail the construction start and completion dates, any information about meeting or failing to meet species take Avoidance and Minimization Measures (AMM), effectiveness of each AMM that was applied at the project site, and any known project effects to Covered Species.

**PLANT-1 (Rare Plant Surveys):** Rare plant surveys of the project area were conducted in 2024. None of the covered plant species were observed during the surveys.

**VELB-1 (Valley Elderberry Longhorn Beetle Avoidance):** If a Covered Activity is planned within modeled habitat for valley elderberry longhorn beetle, project proponents will conduct a survey for presence of elderberry shrubs within 100 feet of the project area. If elderberry shrubs are found, protocol level surveys will be conducted. Direct impacts (within 20 feet of construction), shall be avoided as much as possible. Indirect impacts (shrubs between 20-100 feet of construction) shall also be avoided as much as possible. Any direct loss of elderberry shrubs shall be compensated for according to USFWS Conservation Guidelines for the Valley Elderberry Longhorn Beetle (USFWS 1999b).

**WS-1 (Western Spadefoot Work Window):** Ground-disturbing Covered Activities within western spadefoot modeled habitat will occur outside the breeding and dispersal season (after May 15 and before October 15), to the maximum extent practicable.

**WS-2 (Western Spadefoot Exclusion Fencing):** If Covered Activities must be implemented in modeled habitat after October 15 and before May 15, exclusion fencing will be installed around the project footprint before October 15, and the project site must be monitored by an approved biologist following rain events. Temporary high-visibility construction fencing will be installed along the edge of work areas, and silt fencing will be installed immediately behind the temporary high-visibility construction fencing to exclude western spadefoot from entering the construction area. Fencing will remain in place until all construction activities within the construction area are completed. No project activities will occur outside

the delineated project footprint. If a western spadefoot is encountered, refer to WS-6, below.

**WS-3 (Western Spadefoot Monitoring):** If Covered Activities must be implemented in modeled habitat in the breeding and dispersal season (after October 15 and before May 15), an approved biologist experienced with western spadefoot identification and behavior will monitor the project site, including the integrity of any exclusion fencing. The approved biologist will be on site daily while construction-related activities are taking place, and will inspect the project site daily for western spadefoot prior to construction activities. The approved biologist will also train construction personnel on the required avoidance procedures, exclusion fencing, and protocols in the event that a western spadefoot enters an active construction zone (i.e., outside the buffer zone). If a western spadefoot is encountered, refer to WS-6, below.

**WS-4 (Avoid Western Spadefoot Entrapment):** If a Covered Activity occurs in western spadefoot modeled habitat, all excavated steep-walled holes and trenches more than 6 inches deep will be covered with plywood (or similar material) or provided with one or more escape ramps constructed of earth fill or wooden planks at the end of each work day or 30 minutes prior to sunset, whichever occurs first. All steep-walled holes and trenches will be inspected by the approved biologist each morning to ensure that no wildlife has become entrapped. All construction pipes, culverts, similar structures, construction equipment, and construction debris left overnight within western spadefoot modeled habitat will be inspected for western spadefoot by the approved biologist prior to being moved. If a western spadefoot is encountered, refer to WS-6, below.

**WS-5 (Erosion Control Materials in Western Spadefoot Habitat):** If erosion control (BMP-2) is implemented within western spadefoot modeled habitat, non-entangling erosion control material will be used to reduce the potential for entrapment. Tightly woven fiber netting (mesh size less than 0.25 inch) or similar material will be used to ensure that western spadefoots are not trapped (no monofilament). Coconut coir matting and fiber rolls containing burlap are examples of acceptable erosion control materials.

**WS-6 (Western Spadefoot Encounter Protocol):** If Covered Activities must be implemented in modeled habitat during the breeding and dispersal season (after October 15 and before May 15), and a western spadefoot is encountered during construction activities, the approved biologist will notify the Wildlife Agencies immediately. Construction activities will be suspended in a 100-foot radius of the animal until the animal leaves the project site on its own volition. If necessary, the approved biologist will notify the Wildlife Agencies to determine the appropriate procedures related to relocation. If the animal is handled, a report will be

submitted, including date(s), location(s), habitat description, and any corrective measures taken to protect the western spadefoot within 1 business day to the Wildlife Agencies. The biologist will report any take of listed species to the U.S. Fish and Wildlife Service and California Department of Fish and Wildlife immediately. Any worker who inadvertently injures or kills a western spadefoot or who finds dead, injured, or entrapped western spadefoot(s) must immediately report the incident to the approved biologist.

#### **9. Compensatory Mitigation:**

The Permittee is required to provide compensatory mitigation for direct impacts, described in section J for permanent impacts.

#### **10. Basin Plan:**

Receiving waters potentially impacted by this Project are protected in accordance with the Water Quality Control Plan for the Sacramento River and San Joaquin River Basins, Fifth Edition, rev. February 2019 (Basin Plan). The plan for the region and other plans and policies may be accessed at the State Water Resources Control Board's (State Water Board) Plans and Policies Web page ([http://www.waterboards.ca.gov/plans\\_policies/](http://www.waterboards.ca.gov/plans_policies/)). The Basin Plan includes water quality standards, which consist of existing and potential beneficial uses of waters of the state, water quality objectives to protect those uses, and the state and federal antidegradation policies.

#### **11. Waste Discharge Requirements:**

This Order is adopted pursuant to Water Code section 13263, subdivision (a), which provides, in pertinent part, the following:

*The regional board, after any necessary hearing, shall prescribe requirements as to the nature of any proposed discharge, existing discharge, or material change in an existing discharge..., with relation to the conditions existing in the disposal area or receiving waters upon, or into which, the discharge is made or proposed. The requirements shall implement any relevant water quality control plans that have been adopted, and shall take into consideration the beneficial uses to be protected, the water quality objectives reasonably required for that purpose, other waste discharges, the need to prevent nuisance, and the provisions of Section 13241.*

Compliance with section 13263, subdivision (a), including implementation of the Basin Plan, is discussed below. The Central Valley Water Board has considered the factors in section 13241 in establishing the requirements in this Order.

**12. Antidegradation Policy:**

State Water Resources Control Board Resolution No. 68-16, "Statement of Policy with Respect to Maintaining High Quality of Waters in California" (Antidegradation Policy), requires that the quality of existing high-quality water be maintained unless any change will be consistent with the maximum benefit to the people of the state, will not unreasonably affect present or anticipated future beneficial uses of such water, and will not result in water quality less than that prescribed in water quality control plans or policies. The Antidegradation Policy further requires best practicable treatment or control of the discharge necessary to assure that pollution or nuisance will not occur and the highest water quality consistent with maximum benefit to the people of the state will be maintained.

**13. No Net Loss Policy:**

Executive Order W-59-93, dated 23 August 1993, establishes a California Wetlands Conservation Policy including an objective to ensure no overall net loss of and a long-term net gain in the quantity, quality, and permanence of wetland acreage and values in California (No Net Loss Policy). The State Water Resources Control Board and Regional Water Quality Control Boards are committed to increasing the quantity, quality, and diversity of wetlands that qualify as waters of the state.

**14. Compliance with Antidegradation and No Net Loss Policies:**

Filling wetlands and other waters causes partial or complete loss of the beneficial uses provided by those waters. To reconcile such losses with the State's No Net Loss and Antidegradation Policies, this Order requires adherence to the requirements in the mitigation monitoring and reporting program, including compensatory mitigation for impacts that cannot be feasibly avoided or minimized; implementation of the approved compensatory mitigation plan; and other requirements to minimize the potential effects of construction on water quality and resources. Regarding compensatory mitigation, this Order requires aquatic resource impacts be mitigated at a 1:1 ratio (credits to impacted aquatic resources) by purchasing 12.98 vernal pool credits and 3.12 seasonal wetland credits from the South Sacramento Habitat Conservation Plan In-Lieu Fee Program. These measures ensure impacts are mitigated through avoidance and minimization and that unavoidable loss of beneficial uses is offset with appropriate compensatory mitigation. Accordingly, Order requirements are consistent with the provisions of the No Net Loss and Antidegradation Policies.

**15. Monitoring and Reporting Requirements:**

The monitoring and technical reporting provisions in this Order are adopted pursuant to Water Code section 13267, subdivision (b)(1), which provides, in pertinent part, the following:

*[T]he regional board may require that any person who has discharged, discharges, or is suspected of having discharged or discharging, or who proposes to discharge waste ... shall furnish, under penalty of perjury, technical or monitoring program reports which the regional board requires. The burden, including costs, of these reports shall bear a reasonable relationship to the need for the report and the benefits to be obtained from the reports. In requiring those reports, the regional board shall provide the person with a written explanation with regard to the need for the reports, and shall identify the evidence that supports requiring that person to provide the reports.*

The reports required under this Order are necessary to verify and ensure compliance with permitting requirements and protect waters of the state. The burden associated with such reports is reasonable relative to the need for their submission.

#### **16. California Environmental Quality Act (CEQA):**

On 13 January 2026, the County of Sacramento, as lead agency, certified a supplemental environmental impact report (EIR) (State Clearinghouse (SCH) No. 2015022062) for the Project and filed a Notice of Determination (NOD) at the SCH on 15 January 2026. Pursuant to CEQA, the Central Valley Water Board has made Findings of Facts (Findings) which support the issuance of this Order and are included in Attachment C.

#### **17. Liability for Noncompliance:**

Failure to comply with this Order shall constitute a violation of the Porter-Cologne Water Quality Control Act. The Permittee may then be subject to administrative and/or civil liability pursuant to Water Code sections 13268 and/or 13350. The Central Valley Water Board reserves its right to take any enforcement actions authorized by law.

#### **18. Additional Monitoring and Reporting:**

In response to a suspected violation of any condition of this Order, the Central Valley Water Board may require the holder of this Order to furnish, under penalty of perjury, any technical or monitoring reports the Water Boards deem appropriate, provided that the burden, including costs, of the reports shall bear a reasonable relationship to the need for the reports and the benefits to be obtained from the reports. The additional monitoring requirements ensure that permitted discharges and activities comport with any applicable effluent limitations, water quality standards, and/or other appropriate requirements of state law.

**19. Construction General Permit:**

This Order does not provide coverage under the NPDES General Permit for Storm Water Discharges Associated with Construction and Land Disturbance Activities Order No. 2022-0057-DWQ, as amended.

**20. Endangered Species Act:**

This Order does not authorize any act which results in the taking of a threatened, endangered or candidate species or any act, which is now prohibited, or becomes prohibited in the future, under either the California Endangered Species Act (Fish & Wildlife Code, sections 2050-2097) or the federal Endangered Species Act (16 U.S.C. sections 1531-1544). If a “take” will result from any act authorized under this Order held by the Permittee, the Permittee must comply with the California Endangered Species Act and federal Endangered Species Act prior to any construction or operation of the portion of the Project that may result in a take. The Permittee is responsible for meeting all requirements of the applicable endangered species act for the Project authorized under this Order.

**21. Public Notice:**

This Order was publicly noticed with an opportunity to submit written comments pursuant to Water Code section 13167.5.

**22. Public Hearing:**

At a public meeting, the Central Valley Water Board heard and considered all comments pertaining to the discharges regulated under this Order.

**23. Petitions for Reconsideration:**

Any person aggrieved by this action may petition the State Water Board to reconsider this Order in accordance with Water Code section 13320 and California Code of Regulations, title 23, section 2050 et seq. The State Water Board must receive the petition by 5:00 p.m. on the 30th day after the date of this Order; if the 30th day falls on a Saturday, Sunday, or state holiday, the petition must be received by the State Water Board by 5:00 p.m. on the next business day. Copies of the law and regulations applicable to filing petitions are available on the Internet (at the address below) and will be provided upon request.

[State Water Resources Control Board Law and Regulations for Filing Petitions](http://www.waterboards.ca.gov/public_notices/petitions/water_quality)  
([http://www.waterboards.ca.gov/public\\_notices/petitions/water\\_quality](http://www.waterboards.ca.gov/public_notices/petitions/water_quality))

## REQUIREMENTS

**IT IS HEREBY ORDERED**, pursuant to Water Code sections 13263 and 13267, that the Permittee shall comply with the following:

### A. Scope

Impacts to waters of the state shall not exceed quantities shown in Table 1.

### B. Reporting and Notification Requirements

1. Requirements for the content of the below reporting and notification types are detailed in Attachment D, including specifications for photo and map documentation during the Project, which is incorporated herein by reference.
2. Written reports and notifications must be submitted using the Reporting and Notification Cover Sheet located in Attachment D, which must be signed by the Permittee or an authorized representative. The Permittee must submit all notifications, submissions, materials, data, correspondence, and reports in a searchable Portable Document Format (PDF). Documents less than 50 MB must be emailed to: [CentralValleySacramento@waterboards.ca.gov](mailto:CentralValleySacramento@waterboards.ca.gov) and [Nicholas.Savino@waterboards.ca.gov](mailto:Nicholas.Savino@waterboards.ca.gov). In the subject line of the email, include the Central Valley Water Board Contact, Project name, and WDID No. Documents that are 50 MB or larger may be uploaded to an approved database or transferred to a disk and mailed to the Central Valley Water Board Contact.
3. **Project Reporting**
  - a. **Monthly Reporting:** NOT APPLICABLE
  - b. **Annual Reporting:** The Permittee shall submit an Annual Report each year on the 1st day of the month, one year after the effective date of the Order. Annual reporting shall continue until the Central Valley Water Board issues a Notice of Project Complete Letter to the Permittee.
4. **Project Status Notifications**
  - a. **Commencement of Construction:**

The Permittee shall submit a Commencement of Construction Report at least seven (7) days prior to start of initial ground disturbance activities and, if applicable, corresponding Waste Discharge Identification Number (WDID#) issued under the National Pollutant Discharge Elimination System (NPDES) General Permit for Storm Water Discharges Associated with Construction and Land Disturbance Activities (Order No. 2022-0057-DWQ; NPDES No. CAS000002).

**b. Request for Notice of Completion of Discharges Letter:**

The Permittee shall submit a Request for Notice of Completion of Discharges Letter following completion of active Project construction activities, including any required restoration and permittee-responsible mitigation. This request shall be submitted to the Central Valley Water Board staff within thirty (30) days following completion of all Project construction activities. Upon acceptance of the request, Central Valley Water Board staff shall issue a Notice of Completion of Discharges Letter to the Permittee which will end the active discharge period.

**c. Request for Notice of Project Complete Letter:**

The Permittee shall submit a Request for Notice of Project Complete Letter when construction and/or any post-construction monitoring is complete, and no further Project activities will occur. Completion of post-construction monitoring shall be determined by Central Valley Water Board staff and shall be contingent on successful attainment of restoration and mitigation performance criteria. This request shall be submitted to Central Valley Water Board staff within thirty (30) days following completion of all Project activities. Upon approval of the request, the Central Valley Water Board staff shall issue a Notice of Project Complete Letter to the Permittee which will end the post-discharge monitoring period.

**5. Conditional Notifications and Reports****a. Accidental Discharges of Hazardous Materials<sup>2</sup>**

Following an accidental discharge of a reportable quantity of a hazardous material, sewage, or an unknown material, the following applies (Water Code, section 13271):

- i. As soon as (A) Permittee has knowledge of the discharge or noncompliance, (B) notification is possible, and (C) notification can be provided without substantially impeding cleanup or other emergency measures then:
  - first call – 911 (to notify local response agency)

---

<sup>2</sup> "Hazardous material" means any material that, because of its quantity, concentration, or physical or chemical characteristics, poses a significant present or potential hazard to human health and safety or to the environment if released into the workplace or the environment. "Hazardous materials" include, but are not limited to, hazardous substances, hazardous waste, and any material that a handler or the administering agency has a reasonable basis for believing that it would be injurious to the health and safety of persons or harmful to the environment if released into the workplace or the environment. (Health & Safety Code, section 25501.)

- then call – Office of Emergency Services (OES) State Warning Center at:(800) 852-7550 or (916) 845-8911
  - Lastly, follow the required OES, procedures as set forth in the [Office of Emergency Services' Accidental Discharge Notification Web page](http://www.caloes.ca.gov/FireRescueSite/Documents/CalOES-Spill_Booklet_Feb2014_FINAL_BW_Acc.pdf) ([http://www.caloes.ca.gov/FireRescueSite/Documents/CalOES-Spill\\_Booklet\\_Feb2014\\_FINAL\\_BW\\_Acc.pdf](http://www.caloes.ca.gov/FireRescueSite/Documents/CalOES-Spill_Booklet_Feb2014_FINAL_BW_Acc.pdf))
- ii. Following notification to OES, the Permittee shall notify Central Valley Water Board, as soon as practicable (ideally within 24 hours). Notification may be delivered via written notice, email, or other verifiable means.
  - iii. Within five (5) working days of notification to the Central Valley Water Board, the Permittee must submit an Accidental Discharge of Hazardous Material Report.

**b. Violation of Compliance with Water Quality Standards:**

The Permittee shall notify the Central Valley Water Board of any event causing a violation of compliance with water quality standards. Notification may be delivered via written notice, email, or other verifiable means. This notification must be followed within three (3) working days by submission of a Violation of Compliance with Water Quality Standards Report.

**c. In-Water Work and Diversions:**

- i. The Permittee shall notify the Central Valley Water Board at least forty-eight (48) hours prior to initiating work in water or stream diversions. Notification may be delivered via written notice, email, or other verifiable means.
- ii. Within three (3) working days following completion of work in water or stream diversions, an In-Water Work/Diversions Water Quality Monitoring Report must be submitted to Central Valley Water Board staff.

**d. Project Modifications:**

Project modifications may require an amendment of this Order. The Permittee shall give advance notice to Central Valley Water Board staff if Project implementation as described in the application materials is altered in any way or by the imposition of subsequent permit conditions by any local, state or federal regulatory authority by submitting a Modifications to Project Report. The Permittee shall inform Central Valley Water Board staff of any Project modifications that will interfere with the Permittee's compliance with this Order. Notification may be made in accordance with conditions in the Project Deviation section of this Order.

**e. Transfer of Property Ownership and Long-Term Best Management Practices (BMPs) Maintenance:**

This Order is not transferable in its entirety or in part to any person or organization except after notice to the Central Valley Water Board in accordance with the following terms:

- i. The Permittee must notify the Central Valley Water Board of any change in ownership or interest in ownership of the Project area by submitting a Transfer of Property Ownership Report. The Permittee and purchaser must sign and date the notification and provide such notification to the Central Valley Water Board at least 10 days prior to the transfer of ownership. The purchaser must also submit a written request to the Central Valley Water Board to be named as the permittee in a revised order. Until such time as this Order has been modified to name the purchaser as the permittee, the Permittee shall continue to be responsible for all requirements set forth in this Order.
- ii. If maintenance responsibility for post-construction BMPs is legally transferred, the Permittee must submit to the Central Valley Water Board a copy of such documentation and must provide the transferee with a copy of a long-term BMP maintenance plan that complies with manufacturer or designer specifications. The Permittee must provide such notification to the Central Valley Water Board with a Transfer of Long-Term BMP Maintenance Report at least 10 days prior to the transfer of BMP maintenance responsibility. Until such time as this Order has been modified to name the transferee as the permittee, the Permittee shall continue to be responsible for all requirements set forth in this Order.

## **C. Water Quality Monitoring**

### **1. General**

- a. If surface water is present, continuous visual surface water monitoring shall be conducted during active construction periods to detect accidental discharge of construction related pollutants (e.g. oil and grease, turbidity plume, or uncured concrete).
- b. The Permittee shall perform surface water sampling:
  - i. when performing any in-water work;
  - ii. during the entire duration of temporary surface water diversions;
  - iii. in the event that the Project activities result in any materials reaching surface waters; or
  - iv. when any activities result in the creation of a visible plume in surface waters.

- c. Sampling is not required in a wetland where the entire wetland is being permanently filled, provided there is no outflow connecting the wetland to surface waters.

## **2. Accidental Discharges/Noncompliance**

Upon occurrence of an accidental discharge of hazardous materials or a violation of compliance with a water quality standard, Central Valley Water Board staff may require water quality monitoring based on the discharge constituents and/or related water quality objectives and beneficial uses.

## **3. In-Water Work or Diversions:**

- a. During planned in-water work or during the entire duration of temporary water diversions, any discharge(s) to waters of the state shall conform to the following water quality objectives:
  - i. Waters shall not contain oils, greases, waxes, or other materials in concentrations that cause nuisance, result in a visible film or coating on the surface of the water or on objects in the water, or otherwise adversely affect beneficial uses.
  - ii. Activities shall not cause turbidity increases in surface water to exceed the following:
    - (a) where natural turbidity is less than 1 Nephelometric Turbidity Units (NTUs), controllable factors shall not cause downstream turbidity to exceed 2 NTU;
    - (b) where natural turbidity is between 1 and 5 NTUs, increases shall not exceed 1 NTU;
    - (c) where natural turbidity is between 5 and 50 NTUs, increases shall not exceed 20 percent;
    - (d) where natural turbidity is between 50 and 100 NTUs, increases shall not exceed 10 NTUs;
    - (e) where natural turbidity is greater than 100 NTUs, increases shall not exceed 10 percent.

In determining compliance with the above limits, appropriate averaging periods may be applied provided that beneficial uses will be fully protected. Averaging periods may only be used with prior permission of the Central Valley Water Board Executive Officer.

- d. Sampling during in-water work or during the entire duration of temporary water diversions shall be conducted in accordance with Table 2 sampling

- parameters.<sup>3</sup> The sampling requirements in Table 2 shall be conducted upstream out of the influence of the Project, and approximately 300 feet downstream of the work area. The sampling frequency may be modified for certain projects with written approval from Central Valley Water Board staff.
- e. An In-Water Work and Diversion Water Quality Monitoring Report, as described in Attachment D, shall be submitted within two weeks of initiation of in-water construction, and every two weeks thereafter.
  - f. In reporting the data, the Permittee shall arrange the data in tabular form so that the sampling locations, date, constituents, and concentrations are readily discernible. The data shall be summarized in such a manner to illustrate clearly whether the Project complies with Order requirements. The report shall include surface water sampling results, visual observations, and identification of the turbidity increase in the receiving water applicable to the natural turbidity conditions specified in the turbidity criteria in Section C.3.
  - g. If no sampling is required, the Permittee shall submit a written statement stating, "No sampling was required" within two weeks on initiation of in-water construction, and every two weeks thereafter.

**Table 2: Sample Type and Frequency Requirements**

Parameter	Unit of Measurement	Type of Sample	Minimum Frequency
Turbidity	Nephelometric Turbidity Units (NTU)	Grab	Every 4 hours
Visible construction related pollutants <sup>4</sup>	Observations	Visual Inspections	Continuous throughout the construction period

<sup>3</sup> Pollutants shall be analyzed using the analytical methods described in 40 Code of Federal Regulations Part 136; where no methods are specified for a given pollutant, the method shall be approved by Central Valley Water Board staff. Grab samples shall be taken between the surface and mid-depth and not be collected at the same time each day to get a complete representation of variations in the receiving water. A hand-held field meter may be used, provided the meter utilizes a U.S. EPA-approved algorithm/method and is calibrated and maintained in accordance with the manufacturer's instructions. A calibration and maintenance log for each meter used for monitoring shall be maintained onsite.

<sup>4</sup> Visible construction-related pollutants include oil, grease, foam, fuel, petroleum products, and construction-related, excavated, organic or earthen materials.

**4. Post-Construction:**

The Permittee is required to visually inspect the Project site during the rainy season for one year following completion of active Project construction activities to ensure excessive erosion, stream instability, or other water quality pollution is not occurring in or downstream of the Project site. If water quality pollution is occurring, contact the Central Valley Water Board staff member overseeing the Project within three (3) working days. The Central Valley Water Board may require the submission of a Violation of Compliance with Water Quality Standards Report. Additional permits may be required to carry out any necessary site remediation.

**D. Standard**

1. This Order is subject to modification or revocation upon administrative or judicial review, including review and amendment pursuant to Water Code section 13330, and California Code of Regulations, title 23, Chapter 6 commencing with sections 2050-2068, inclusive. Additionally, the Central Valley Water Board may review and revise the requirements in this Order as necessary. (Water Code, section 13263, subdivision (e).)
2. This Order is conditioned upon total payment of any fee required under title 23 of the California Code of Regulations and owed by the Permittee.
3. Permitted actions must not cause a violation of any applicable water quality standards, including impairment of designated beneficial uses for receiving waters as adopted in the Basin Plan of the Central Valley Water Board or any State Water Board water quality control plan or policy. The source of any such discharge must be eliminated as soon as practicable.
4. The Permittee must, at all times, fully comply with engineering plans, specifications, and technical reports submitted to support this Order; and all subsequent submittals required as part of this Order. The conditions within this Order and Attachments supersede conflicting provisions within Permittee submittals.
5. **Mitigation Monitoring and Reporting Program (MMRP):**

The Permittee shall adhere to all requirements in the Mitigation Monitoring and Reporting Program (MMRP) which is incorporated herein by reference and any additional measures as outlined in Attachment C, CEQA Findings of Fact.

**E. Administrative**

1. Signatory requirements for all document submittals required by this Order are presented in Attachment E of this Order.
2. The Permittee shall grant Central Valley Water Board staff, or an authorized representative (including an authorized contractor acting as a Water Board

representative), upon presentation of credentials and other documents as may be required by law, permission to:

- a. Enter upon the Project or compensatory mitigation site(s) premises where a regulated facility or activity is located or conducted, or where records are kept.
  - b. Have access to and copy any records that are kept and are relevant to the Project or the requirements of this Order.
  - c. Inspect any facilities, equipment (including monitoring and control equipment), practices, or operations regulated or required under this Order.
  - d. Sample or monitor for the purposes of assuring Order compliance.
3. The Permittee shall be responsible for work conducted by its consultants, contractors, and any subcontractors. A copy of this Order shall be provided to any consultants, contractors, and subcontractors working on the Project. Copies of this Order shall remain at the Project site for the duration of this Order. All personnel performing work on the Project shall be familiar with the content of this Order and its posted location at the Project site.

**4. Lake or Streambed Alteration Agreement:**

If applicable, the Permittee shall submit a signed copy of the California Department of Fish and Wildlife's (CDFW) Lake or Streambed Alteration Agreement to the Central Valley Water Board immediately upon execution and prior to any discharge to waters of the state.

**F. Construction**

1. **Dewatering:** NOT APPLICABLE
2. **Directional Drilling:** NOT APPLICABLE
3. **Dredging:** NOT APPLICABLE
4. **Dust Abatement:**

Dust abatement activities shall be conducted so that sediment or dust abatement chemicals are not discharged into waters of the state. Dust abatement products or additives that are known to be detrimental to water quality or wildlife shall not be used, unless specific management needs are documented, and product-specific application plans are approved by Central Valley Water Board staff.

**5. Good Site Management "Housekeeping":**

**a. Spill Prevention, Containment, and Cleanup Plan:**

The Permittee shall develop and maintain onsite a project-specific Spill Prevention, Containment, and Cleanup Plan outlining the practices to prevent, minimize, and/or clean up potential spills during construction of the Project.

The Plan must detail the Project elements, construction equipment types and location, access and staging and construction sequence. The Plan must be made available to the Central Valley Water Board staff upon request.

- b. Refueling of equipment within the floodplain or within 300 feet of the waterway is prohibited. If critical equipment must be refueled within 300 feet of the waterway, spill prevention and countermeasures must be implemented to avoid spills. Refueling areas shall be provided with secondary containment including drip pans and/or placement of absorbent material. No hazardous materials, pesticides, fuels, lubricants, oils, hydraulic fluids, or other construction-related potentially hazardous substances should be stored within a floodplain or within 300 feet of a waterway.
- c. The Permittee must perform frequent inspections of construction equipment prior to utilizing it near surface waters to ensure leaks from the equipment are not occurring and are not a threat to water quality.
- d. All materials resulting from the Project shall be removed from the site and disposed of properly.

**6. Toxic and Hazardous Materials:**

- a. The discharge of petroleum products, any construction materials, hazardous materials, pesticides, fuels, lubricants, oils, hydraulic fluids, raw cement, concrete or the washing thereof, asphalt, paint, coating material, drilling fluids, or other substances potentially hazardous to fish and wildlife resulting from or disturbed by project-related activities is prohibited and shall be prevented from contaminating the soil and/or entering waters of the state. In the event of a prohibited discharge, the Permittee shall comply with notification requirements in Sections B.5.a and B.5.b.
- b. No wet concrete will be placed into wetland, vernal pool, or stream channel habitat.

**7. Invasive Species and Soil Borne Pathogens:**

Prior to arrival at the project site and prior to leaving the project site, construction equipment that may contain invasive plants and/or seeds shall be cleaned to reduce the spread of noxious weeds.

**8. Post-Construction Storm Water Management: NOT APPLICABLE**

**9. Roads:**

- a. The number of access routes, number and size of staging areas, and the total area of the activity must be limited to the minimum necessary to achieve the project goal. Routes and work area boundaries must be clearly demarcated.

- b. Bridges, culverts, dip crossings, or other structures must be installed so that water and in-stream sediment flow is not impeded. Appropriate design criteria, practices and materials must be used in areas where access roads intersect waters of the state.
- c. Temporary materials placed in any water of the state must be removed as soon as construction is completed at that location, and all temporary roads must be removed or re-contoured and restored according to approved re-vegetation and restoration plans.
- d. Any structure, including but not limited to, culverts, pipes, piers, and coffer dams, placed within a stream where fish (as defined in California Fish and Game Code section 45) exist or may exist, must be designed, constructed, and maintained such that it does not constitute a barrier to upstream or downstream movement of aquatic life, or cause an avoidance reaction by fish due to impedance of their upstream or downstream movement. This includes, but is not limited to, maintaining the supply of water and maintaining flows at an appropriate depth, temperature, and velocity to facilitate upstream and downstream fish migration. If any structure results in a long-term reduction in fish movement, the Permittee shall be responsible for restoration of conditions as necessary (as determined by the Water Board) to secure passage of fish across the structure.
- e. A method of containment must be used below any temporary bridge, trestle, boardwalk, and/or other stream crossing structure to prevent any debris or spills from falling into the waters of the state. Containment must be maintained and kept clean for the life of the temporary stream crossing structure.

**10. Sediment Control:**

- a. Silt fencing, straw wattles, or other effective management practices must be used along the construction zone to minimize soil or sediment along the embankments from migrating into the waters of the state throughout the entire duration of the Project.
- b. The use of netting material (e.g., monofilament-based erosion blankets) that could trap aquatic dependent wildlife is prohibited within the Project area.

**11. Stabilization/Erosion Control:**

- a. All areas disturbed by Project activities shall be protected from washout and erosion.
- b. Hydroseeding shall be performed with California native seed mix.

**12. Storm Water:**

During the construction phase, the Permittee must employ strategies to minimize erosion and the introduction of pollutants into storm water runoff. These strategies must include an effective combination of erosion and sediment control BMPs that are implemented and adequately working prior to the rainy season and during all phases of construction.

**G. Site Specific:** NOT APPLICABLE

**H. Total Maximum Daily Load (TMDL):** NOT APPLICABLE

**I. Mitigation for Temporary Impacts:** NOT APPLICABLE

**J. Compensatory Mitigation for Permanent Impacts:**

**1. Final Compensatory Mitigation Plan:**

The Permittee shall provide compensatory mitigation for impacts to waters of the state in accordance with the Aspen VIII and IX Expansion WDR Application Update for Project Phasing Compensatory Mitigation Plan (Compensatory Mitigation Plan) dated 13 January 2026 and incorporated herein by reference.

Teichert Materials will mine the site in phases and provide evidence of compensatory mitigation prior to the initiation of each phase. Required compensatory mitigation for each phase is shown in Table 4.

**2. Purchase of Mitigation Credits by Permittee for Compensatory Mitigation**

- a. A copy of the fully executed agreement for the purchase of mitigation credits shall be provided to the Central Valley Water Board prior to the initiation of in water work for each phase of the project.
- b. The Permittee shall retain responsibility for providing compensatory mitigation and long-term management until Central Valley Water Board staff has received documentation of the credit purchase and the transfer agreement between the Permittee and the seller of credits.

**3. Total Required Compensatory Mitigation**

- a. The Permittee is required to provide compensatory mitigation for the authorized impact to 12.98 acres of vernal pool, 3.12 acres of seasonal wetland, and 0.04 acre of pond by purchasing 12.98 vernal pool ILF credits, 3.12 seasonal wetland ILF credits, and 0.04 open water ILF credits from the SSHCP ILF Program.
- c. Total required Project compensatory mitigation information for permanent physical loss of area is summarized in Tables 3 through 4. [Establishment (Est.), Re-establishment (Re-est.), Rehabilitation (Reh.), Enhancement (Enh.), Preservation (Pres.), Unknown].

**Table 3: Total Required Project Compensatory Mitigation Quantity for Permanent Physical Loss of Area**

Aquatic Resource Type	Mitigation Type	Units	Est.	Re-est.	Reh.	Enh.	Pres.	Unknown
Vernal Pool	In-Lieu Fee Credits	Acres						12.98
Seasonal Wetland	In-Lieu Fee Credits	Acres						3.12
Pond	In-Lieu Fee Credits	Acres						0.04

**Table 4: Required Project Compensatory Mitigation Quantity for each Phase**

Aquatic Resource Type	Mitigation Type	Units	Phase D1	Phase D2	Phase E	Phase F
Vernal Pool	In-Lieu Fee Credits	Acres	0	5.636	2.262	5.082
Seasonal Wetland	In-Lieu Fee Credits	Acres	0	0.6	1.19	1.332
Pond	In-Lieu Fee Credits	Acres	0	0.04	0	0

**K. Project Deviation**

1. Minor modifications of Project locations or predicted impacts may be necessary as a result of unforeseen field conditions, necessary engineering re-design, construction concerns, or similar reasons. Some of these prospective Project modifications may have impacts on water quality. Some modifications of Project locations or predicted impacts may qualify as Project Deviations as set forth in Attachment F. For purposes of this Order, a "Project Deviation" is a Project locational or impact modification that does not require an amendment of the Order because the Central Valley Water Board has determined that any potential water quality impacts that may result from the change are sufficiently addressed by the Order requirements and the CEQA Findings.
2. A Project modification shall not be granted a Project Deviation if it warrants or necessitates changes that are not addressed by this Order or the CEQA environmental document. In this case a supplemental environmental review and/or revised Order will be required.

### **CERTIFICATION**

I, Patrick Pulupa, do hereby certify that the foregoing is a full, true, and correct copy of Waste Discharge Requirements Order R5-2026-XXXX adopted by the Central Valley Water Board on XX June 2026.

---

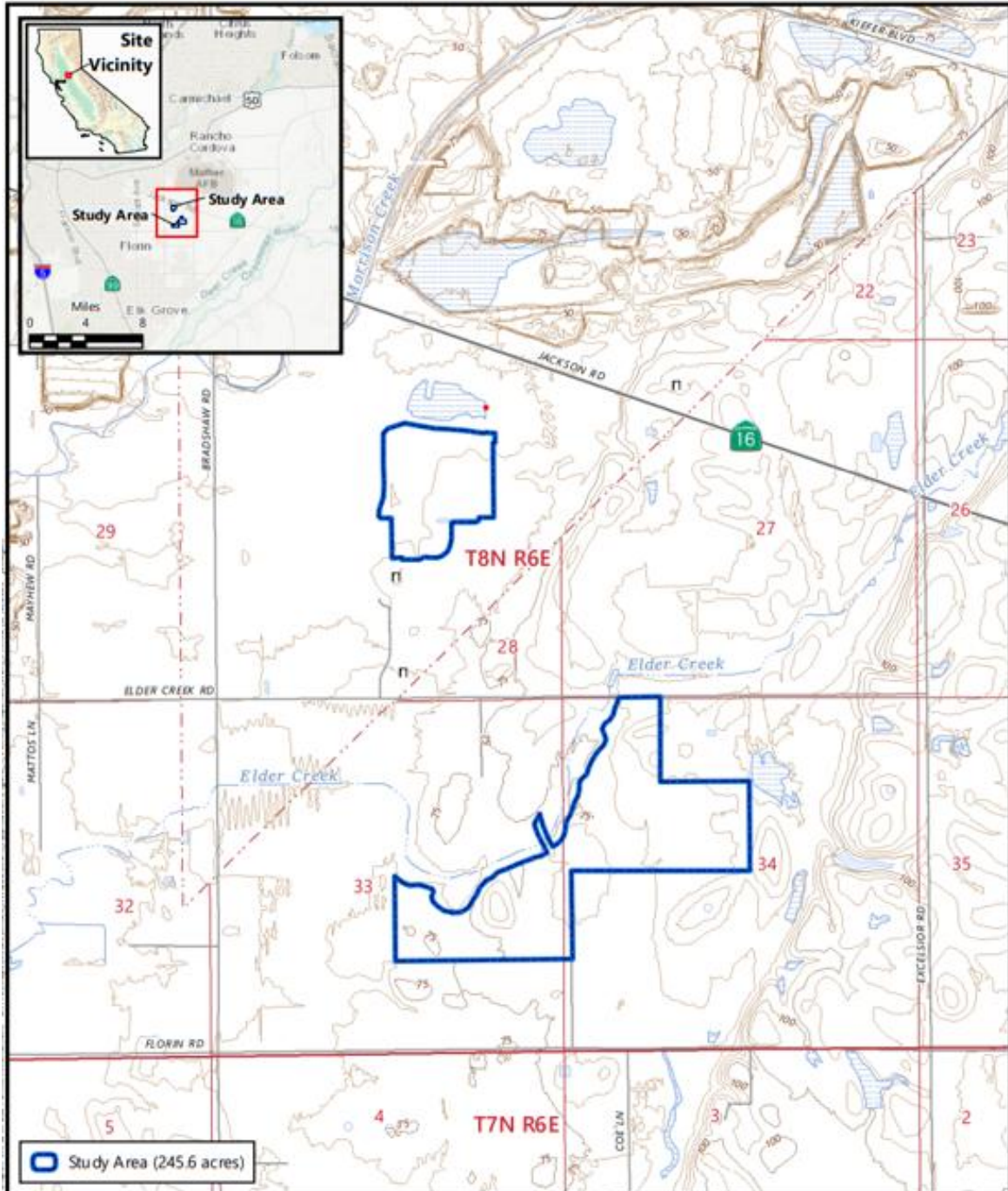
PATRICK PULUPA  
Executive Officer  
Central Valley Regional Water Quality Control Board

- Attachment A:** Project Maps
- Attachment B:** Receiving Waters, Impacts, and Mitigation Information
- Attachment C:** CEQA Findings of Facts
- Attachment D:** Report and Notification Requirements
- Attachment E:** Signatory Requirements
- Attachment F:** Project Deviation Procedures

**(This page intentionally left blank)**

**Attachment A: Project Maps**

Figure 1: Project Location



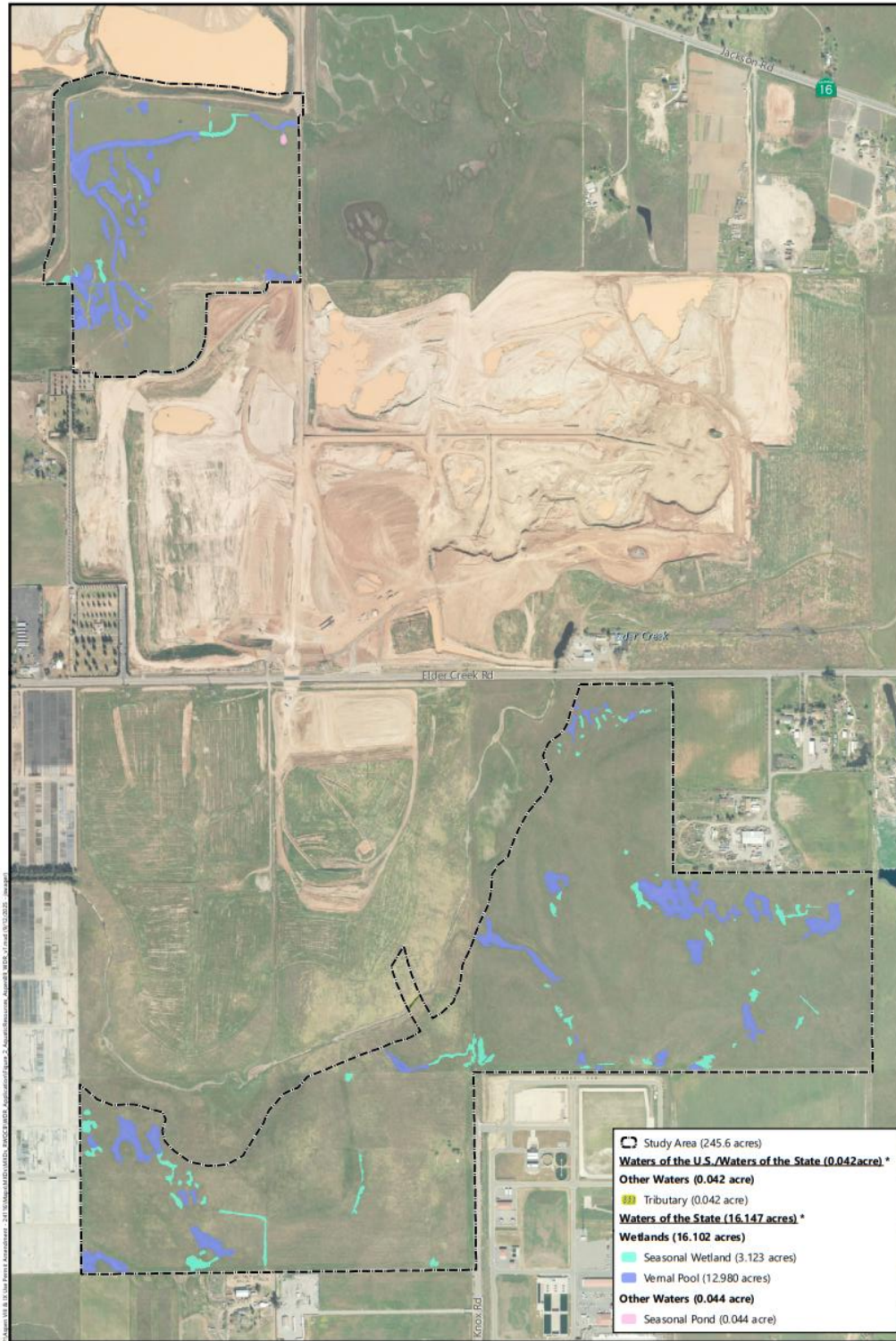
Source: United States Geologic Survey, 2023  
"Carmichael, California" 7.5-Minute Topographic Quadrangle  
Sections 27, 33-34, Township 8 North, Range 6 East, MDBM and  
Unsectioned Rio de los Americanos Land Grant  
Latitude (NAD83): 38.504427°, Longitude (NAD83): -121.315595°

**Figure 1**  
**Site and Vicinity**



Aspen VIII & IX Use Permit Amendment  
Sacramento County, California

Figure 2: Project Site



\* Small summation errors may occur due to rounding  
Aquatic Resources Source: Teichert and Ecosynthesis  
Aerial Source: Sacramento County, 27 February 2022

Figure 3: Project Phases

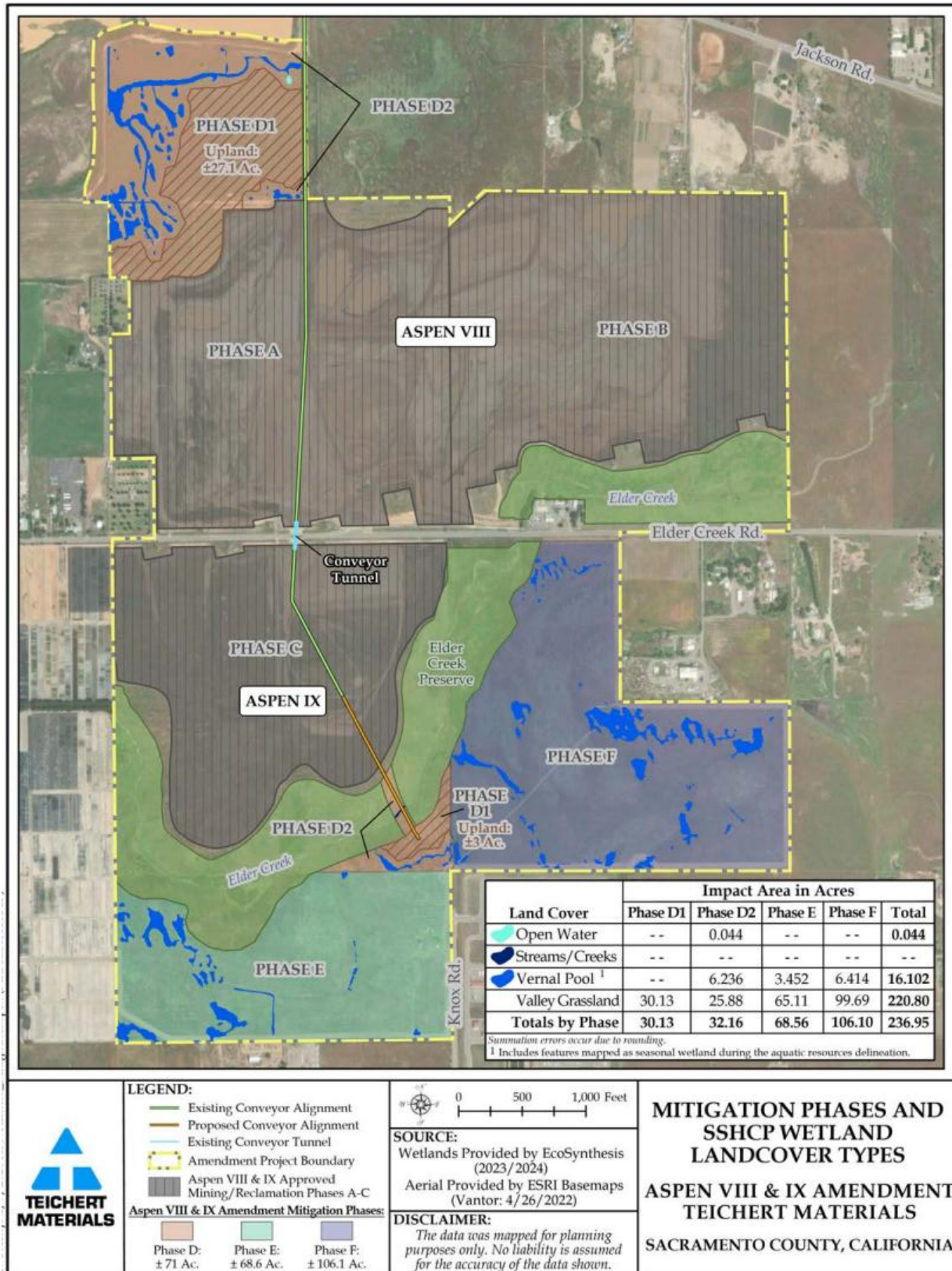
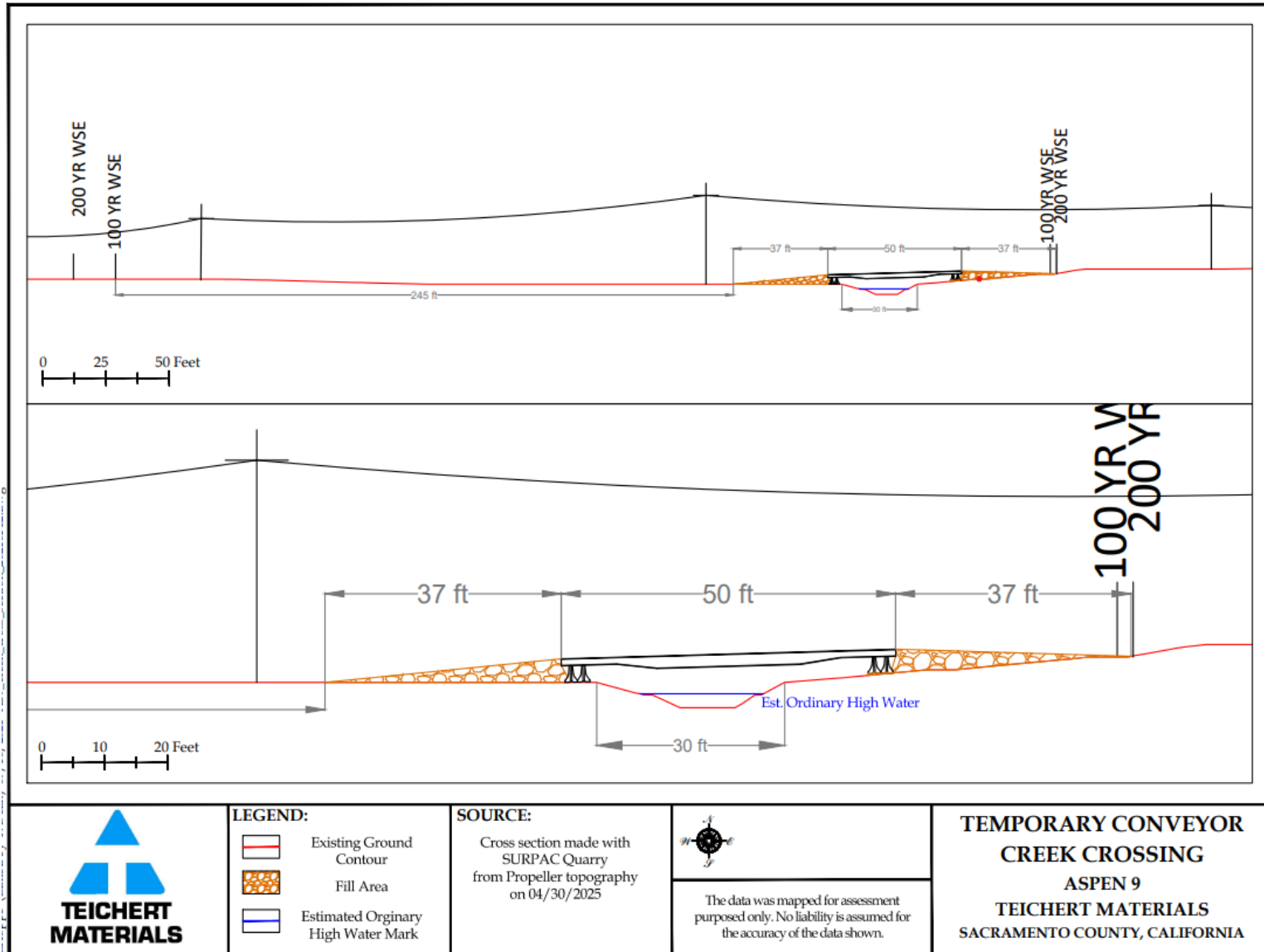


Figure 4: Rail Crossing Design



**(This page intentionally left blank)**

**Receiving Waters, Impacts and Mitigation Information**

The following table shows the receiving waters associated with each impact site.

**Table 1: Receiving Water(s) Information**

Non-Federal Waters	Impact Site ID	Waterbody Name	Impacted Aquatic Resources Type	Water Board Hydrologic Units	Receiving Waters	Receiving Waters Beneficial Uses	303d Listing Pollutant
Yes	Vernal Pools	Unnamed Tributary to Sacramento San Joaquin Delta	Vernal Pool	519.11	Sacramento San Joaquin Delta	MUN, AGR, PROC, IND, REC-1, REC-2, WARM COLD MIGR, SPWN. WILD, NAV	Chlordane, Chlorpyrifos, DDT, Diazinon, Dieldrin, Group A Pesticides, Invasive Species, Mercury, PCBs, Toxicity
Yes	Seasonal Wetland	Unnamed Tributary to Sacramento San Joaquin Delta	Seasonal Wetland	519.11	Sacramento San Joaquin Delta	MUN, AGR, PROC, IND, REC-1, REC-2, WARM COLD MIGR, SPWN. WILD, NAV	Chlordane, Chlorpyrifos, DDT, Diazinon, Dieldrin, Group A Pesticides, Invasive Species, Mercury, PCBs, Toxicity
Yes	Pond	Unnamed Tributary to Sacramento San Joaquin Delta	Pond	519.11	Sacramento San Joaquin Delta	MUN, AGR, PROC, IND, REC-1, REC-2, WARM COLD MIGR, SPWN. WILD, NAV	Chlordane, Chlorpyrifos, DDT, Diazinon, Dieldrin, Group A Pesticides, Invasive Species, Mercury, PCBs, Toxicity

**Individual Direct Impact Locations**

The following tables show individual impacts.

**Table 2: Individual Permanent Fill/Excavation Impact Information**

Impact Site ID	Latitude	Longitude	Indirect Impact Requiring Mitigation?	Acres	Cubic Yards
Vernal Pool	38.510833	-121.3175	No	12.98	20,941
Seasonal Wetland	38.510833	-121.3175	No	3.12	5,038
Pond	38.510833	-121.3175	No	0.04	72

**Compensatory Mitigation Information**

The following table(s) show individual compensatory mitigation information and locations.

**In-Lieu Fee Compensatory Mitigation Information**

**Table 3: In-Lieu Fee Program**

In-Lieu Fee Program Name:	South Sacramento In-Lieu Fee Program
In-Lieu Fee Program Contact Name:	Kim Hudson
Phone:	(916) 874-5849
Email:	<a href="mailto:HUDSONK@saccounty.net">HUDSONK@saccounty.net</a>
In-Lieu Fee Program Location - County:	Sacramento

**Table 4: Mitigation Type Information**

Aquatic Resource Credit Type	Acres	Linear Feet	Number of Credits Purchased
Vernal Pool	12.98		TBD
Seasonal Wetland	3.12		TBD
Open Water	0.04		TBD

**(This page is intentionally left blank)**

## **A. Environmental Review**

On 13 January 2026, the County of Sacramento, as lead agency, certified a Supplemental Environmental Impact Report (SEIR) (State Clearinghouse (SCH) No. 2015022062) for the Project and filed a Notice of Determination (NOD) at the SCH on 14 January 2026. The Central Valley Water Board is a responsible agency under CEQA (Public Resources Code, section 21069) and in making its determinations and findings, must presume that the County of Sacramento's certified environmental document comports with the requirements of CEQA and is valid. (Public Resources Code, section 21167.3.) The Central Valley Water Board has reviewed and considered the environmental document and finds that the environmental document prepared by the County of Sacramento addresses the Project's water resource impacts. (California Code of Regulations, title 14, section 15096, subd. (f).) The environmental document includes the mitigation monitoring and reporting program (MMRP) developed by the County of Sacramento for all mitigation measures that have been adopted for the Project to reduce potential significant impacts. (Public Resources Code, section 21081.6, subd. (a)(1); California Code of Regulations, title 14, section 15091, subd. (d).)

## **B. Incorporation by Reference**

Pursuant to CEQA, these Findings of Facts (Findings) support the issuance of this Order based on the Project FEIR, the application for this Order, and other supplemental documentation.

All CEQA project impacts, including those discussed in subsection C below, are analyzed in detail in the Project SEIR which is incorporated herein by reference. The Project SEIR and FEIR are available at: County of Sacramento, Planning and Environmental Review, 827 Seventh Street, Room 225, Sacramento, CA 95814.

Requirements under the purview of the Central Valley Water Board in the MMRP are incorporated herein by reference.

The Permittee's application for this Order, including all supplemental information provided, is incorporated herein by reference.

## **C. Findings**

The FEIR describes the potential significant environmental effects to water resources. Having considered the whole of the record, including comments received during the public review process, the Central Valley Water Board makes the following findings:(1) Findings regarding impacts that will be avoided or mitigated to a less than significant level. (Public Resources Code, section 21081, subd. (a)(1); California Code of Regulations, title 14, section 15091, subd. (a)(1).)

*Changes or alterations have been required in, or incorporated into, the Project which avoid or substantially lessen the significant environmental effect as identified in the FEIR.*

a.i. Potential Significant Impact:

The Project has the potential to have a substantial adverse effect on state or federally protected wetlands (including but not limited to, marsh, vernal pool, coastal, etc.), through direct removal, filling, hydrological interruption, or other means.

a.ii. Facts in Support of Finding:

The proposed project would amend the existing Mining Use Permit and Reclamation Plan to expand the existing mining footprint by 245.64 acres. Surface mining activities associated with implementation of the proposed project would result in removal of 16.14 acres of wetlands, including 16.1 acres of vernal pools and 0.04 acres of open water land cover (a seasonal pond) within the Aspen VIII and IX Expansion Areas, which is considered a potentially significant impact. While the proposed project would extend the existing conveyor belt system over Elder Creek, the 0.04 acres of stream/creek habitat within the small corridor over Elder Creek would not be removed with implementation of the proposed project. This is because the existing conveyor system would be extended over the creek, where the stream/creek habitat would remain intact for the lifetime of the proposed project and would return to existing conditions once the conveyor belt system is removed as part of final reclamation.

Implementation of New Mitigation Measures BR-3.2 and BR-1.13 would reduce impacts on wetlands associated with implementation of the proposed project to a less than significant level. Therefore, implementation of the proposed project would not result in a new or substantially more severe impact compared to the previously approved project as evaluated in the certified 2016 Final EIR. The proposed project's contribution to impacts on wetlands would not be substantial and the overall impact would remain less than significant with mitigation incorporated.

**MITIGATION MEASURE BR-3.2: OBTAIN PERMITS AND COMPENSATE FOR IMPACTS ON STATE PROTECTED WETLANDS OR WATERS**

- For impacts on waters of the state that are not also waters of the United States and are therefore not covered by the 401 Water Quality Certification or 404 permit provided through participation in the SSHCP, the project applicant shall apply to the RWQCB for Waste Discharge Requirements following the State Wetland Definition and Procedures for Discharges of Dredged or Fill Material to Waters of the State (SWRCB 2021). Any waters of the state that are not also waters of the United States that would be affected by the project shall be replaced or restored on a no-net-loss basis in

accordance with the applicable California Water Board mitigation standards in place at the time of construction.

- The project applicant shall notify CDFW before commencing activity that may divert the natural flow or otherwise alter the bed, bank, or riparian corridor of any 1602 jurisdictional waterway. If project activities trigger the need for a Lake and Streambed Alteration Agreement, the project applicant shall obtain an agreement from CDFW before the activity commences. The project applicant shall conduct project construction activities in accordance with the agreement, including implementing reasonable measures in the agreement necessary to protect the fish and wildlife resources, when working within the bed or bank of waterways or in riparian habitats associated with those waterways. These measures may include but not be limited to demarcation of the construction area, biological monitoring, environmental awareness training for construction crews, and compensatory measures (e.g., restoration, long-term habitat management) such that there would be no net loss.

b.i. Potential Significant Impact:

The Project has the potential to conflict with the provisions of an adopted Habitat Conservation Plan, natural community conservation plan, or other approved local, regional, state or federal plan for the conservation of habitat.

b.ii. Facts in Support of Finding:

The South Sacramento Habitat Conservation Plan (SSHCP) was adopted in 2018 and is the applicable habitat conservation plan for the project site. As discussed throughout this section, implementation of the proposed project prior to the incorporation of mitigation measures would conflict with the SSHCP, which would result in a more severe impact than identified in the 2016 Final EIR. However, impacts related to conflict with the SSHCP would be reduced to a less-than-significant level with implementation of New Mitigation Measure BR-1.13, which requires the project applicant to participate and comply with the SSHCP, including submitting an application, payment of all applicable mitigation fees, and complying with all applicable AMMs. Therefore, impacts would be less than significant with mitigation incorporated.

**MITIGATION MEASURE BR-1.13: PARTICIPATE IN THE SOUTH SACRAMENTO HABITAT CONSERVATION PLAN:**

Prior to initiation of expanded surface mining activities on the project site, the project applicant shall submit an application to participate in the SSHCP. The project applicant shall obtain a USACE Section 404 permit,

RWQCB 401 water quality certification, and incidental take permitting for listed covered species from CDFW and USFWS through participation in the SSHCP. The project applicant shall pay all applicable mitigation fees and shall implement all applicable AMMs. Applicable AMMs include construction best management practices (AMMs BMP-1 through BMP-11), Elder Creek stream setbacks (AMM STREAM-2), general covered species take AMMs (SPECIES-1 through SPECIES-4), covered species AMMs, any other AMMs determined to be required during the application and approval process. Applicable covered species AMMs are those required for the following species: western spadefoot (AMMs WS-1 through WS6), tricolored blackbird (AMMs TCB-1 through TCB-5), Swainson's hawk (AMMs SWHA1 through SWHA-5), western burrowing owl (AMMs WBO-1 through WBO-7), covered raptor species (loggerhead shrike, northern harrier, and white-tailed kite; AMMs RAPTOR-1 through RAPTOR-4), and western red bat (AMMs BAT-1 through BAT-4).

c.i. Potentially Significant Impact:

The Project has the potential to create a significant hazard to the public or the environment through the routine transport, use, or disposal of hazardous materials.

c.ii. Facts in Support of Finding:

Similar to the approved project, surface mining and reclamation activities under the proposed project would utilize construction equipment and other materials, which would require the use of hazardous materials, such as such as diesel, gasoline fuels, and other hazardous materials (e.g., hydraulic fluid, insulation oil, grease, and lubricants). Since operation of the proposed project would be similar to the approved project, the proposed project would also be subject to the requirements of Adopted 2016 Final EIR Mitigation Measure HM-1, which would ensure the onsite storage of hazardous materials occurs in accordance with all applicable standards. Adherence to the requirements of Adopted 2016 Final EIR Mitigation Measure HM-1 would minimize impacts related to hazardous materials associated with implementation of the proposed project. As such, implementation of the proposed project would not result in a new or substantially more severe impact compared to the previously approved project as evaluated in the certified 2016 Final EIR. Therefore, the proposed project's contribution to this impact would not be substantial and this impact would remain less than significant with mitigation incorporated.

MITIGATION MEASURE HM-1: TRANSPORT, USE, OR DISPOSAL OF HAZARDOUS MATERIALS:

- A. Non-functional equipment, scrap metal, construction debris, used batteries and tires, and similar objects shall be removed from the site on a regular basis and disposed of at appropriately licensed facilities.
- B. Spare equipment such as heavy equipment parts, conveyor belts, tires and other replacement or extra equipment pieces, shall be stored indoors or on impermeable surfaces that do not drain off-site whenever possible to avoid surface water contamination. Spare parts containing petroleum products (i.e., lubricants, hydraulic oil, etc.) shall be stored using best management practices (BMPs) to prevent contamination of soil or storm water runoff.
- C. All delivery, maintenance, and repair trucks containing petroleum products or other hazardous materials shall comply with the State of California, Department of Transportation's regulations for transport of hazardous materials. All trucks carrying petroleum products shall be equipped with quick connect couplings and automatic shut-off valves to prevent spills and shall carry appropriate absorbent materials to contain and recover spillage.

#### **D. Determination**

The Central Valley Water Board has reviewed and considered the environmental document and supplemental information provided by the County of Sacramento and has reached its own conclusion to approve this Project. The Central Valley Water Board will file a NOD with the SCH within five (5) working days from the issuance of this Order. (California Code of Regulations, title 14, section 15096.)

**(This page intentionally left blank)**

## **Reports and Notification Requirements**

### **I. Copies of this form**

In order to identify your project, it is necessary to include a copy of the Project specific Cover Sheet below with your report; please retain for your records. If you need to obtain a copy of the Cover Sheet, you may download a copy of this Order as follows:

- A.** [Central Valley Regional Water Quality Control Board's Adopted Orders Web page](https://www.waterboards.ca.gov/centralvalley/board_decisions/adopted_orders/401_wqcerts/)  
([https://www.waterboards.ca.gov/centralvalley/board\\_decisions/adopted\\_orders/401\\_wqcerts/](https://www.waterboards.ca.gov/centralvalley/board_decisions/adopted_orders/401_wqcerts/))
- B.** Find your Order based on the County, Permittee, WDID No., and/or Project Name.

### **II. Report Submittal Instructions**

- A.** Check the box on the Report and Notification Cover Sheet next to the report or notification you are submitting. **(See your Order for specific reports required for your Project)**
- **Part A (Annual Reports):** These reports will be submitted annually until a Notice of Project Complete Letter is issued.
  - **Part B (Project Status Notifications):** Used to notify the Central Valley Water Board of the status of the Project schedule that may affect Project billing.
  - **Part C (Conditional Notifications and Reports):** Required on a case-by-case basis for accidental discharges of hazardous materials, violation of compliance with water quality standards, notification of in-water work, or other reports.
- B.** Sign the Report and Notification Cover Sheet and attach all information requested for the Report Type.
- C.** Electronic Report Submittal Instructions:
- Submit signed Report and Notification Cover Sheet and required information via email to: [centralvalleysacramento@waterboards.ca.gov](mailto:centralvalleysacramento@waterboards.ca.gov) and cc: [Nicholas.Savino@waterboards.ca.gov](mailto:Nicholas.Savino@waterboards.ca.gov)
  - Include in the subject line of the email:  
ATTN: Nicholas Savino; Project Name; and WDID No. 5A34CR00931

### III. Definition of Reporting Terms

#### A. Active Discharge Period:

The active discharge period begins with the effective date of this Order and ends on the date that the Permittee receives a Notice of Completion of Discharges Letter or, if no post-construction monitoring is required, a Notice of Project Complete Letter. The Active Discharge Period includes all elements of the Project including site construction and restoration, and any Permittee responsible compensatory mitigation construction.

#### B. Request for Notice of Completion of Discharges Letter:

This request by the Permittee to the Central Valley Water Board staff pertains to projects that have post construction monitoring requirements, e.g. if site restoration was required to be monitored for 5 years following construction. Central Valley Water Board staff will review the request and send a Completion of Discharges Letter to the Permittee upon approval. This letter will initiate the post-discharge monitoring period.

#### C. Request for Notice of Project Complete Letter:

This request by the Permittee to the Central Valley Water Board staff pertains to projects that either have completed post-construction monitoring and achieved performance standards or have no post-construction monitoring requirements, and no further Project activities are planned. Central Valley Water Board staff will review the request and send a Project Complete Letter to the Permittee upon approval. Termination of annual invoicing of fees will correspond with the date of this letter.

#### D. Post-Discharge Monitoring Period:

The post-discharge monitoring period begins on the date of the Notice of Completion of Discharges Letter and ends on the date of the Notice of Project Complete Letter issued by the Central Valley Water Board staff. The Post-Discharge Monitoring Period includes continued water quality monitoring or compensatory mitigation monitoring.

#### E. Effective Date: XX June 2026

### IV. Map/Photo Documentation Information

When submitting maps or photos, please use the following formats.

#### A. Map Format Information:

Preferred map formats of at least 1:24000 (1" = 2000') detail (listed in order of preference):

- **GIS shapefiles:** The shapefiles must depict the boundaries of all project

- areas and extent of aquatic resources impacted. Each shape should be attributed with the extent/type of aquatic resources impacted. Features and boundaries should be accurate to within 33 feet (10 meters). Identify datum/projection used and if possible, provide map with a North American Datum of 1983 (NAD83) in the California Teale Albers projection in feet.
- **Google KML files** saved from Google Maps: My Maps or Google Earth Pro. Maps must show the boundaries of all project areas and extent/type of aquatic resources impacted. Include URL(s) of maps. If this format is used include a spreadsheet with the object ID and attributed with the extent/type of aquatic resources impacted.
  - **Other electronic format** (CAD or illustration format) that provides a context for location (inclusion of landmarks, known structures, geographic coordinates, or USGS DRG or DOQQ). Maps must show the boundaries of all project areas and extent/type of aquatic resources impacted. If this format is used include a spreadsheet with the object ID and attributed with the extent/type of aquatic resources impacted.
  - Aquatic resource maps marked on paper **USGS 7.5-minute topographic maps** or **Digital Orthophoto Quarter Quads (DOQQ)** printouts. Maps must show the boundaries of all project areas and extent/type of aquatic resources impacted. If this format is used include a spreadsheet with the object ID and attributed with the extent/type of aquatic resources impacted.

**B. Photo-Documentation:**

Include a unique identifier, date stamp, written description of photo details, and latitude/longitude (in decimal degrees) or map indicating location of photo. Successive photos should be taken from the same vantage point to compare pre/post construction conditions.

**V. Report and Notification Cover Sheet**

**Project:** Aspen VIII and IX Expansion Project  
**Permittee:** Teichert Materials  
**WDID:** 5A34CR00931  
**Reg. Meas. ID:** 463034  
**Place ID:** 903370  
**Order Effective Date:** XX June 2026  
**Order Expiration Date:** XX June 2031

**VI. Report Type Submitted**

**A. Part A – Project Reporting**

Report Type 1  Monthly Report – NOT APPLICABLE  
Report Type 2  Annual Report

**B. Part B – Project Status Notifications**

Report Type 3  Commencement of Construction  
Report Type 4  Request for Notice of Completion of Discharges Letter  
Report Type 5  Request for Notice of Project Complete Letter

**C. Part C – Conditional Notifications and Reports**

Report Type 6  Accidental Discharge of Hazardous Material Report  
Report Type 7  Violation of Compliance with Water Quality Standards Report  
Report Type 8  In-Water Work/Diversions Water Quality Monitoring Report  
Report Type 9  Modifications to Project Report  
Report Type 10  Transfer of Property Ownership Report  
Report Type 11  Transfer of Long-Term BMP Maintenance Report

*“I certify under penalty of law that I have personally examined and am familiar with the information submitted in this document and all attachments and that, based on my inquiry of those individuals immediately responsible for obtaining the information, I believe that the information is true, accurate, and complete. I am aware that there are significant penalties for submitting false information, including the possibility of fine and imprisonment.”*

---

**Print Name<sup>1</sup>**

**Affiliation and Job Title**

---

**Signature**

**Date**

**<sup>1</sup>STATEMENT OF AUTHORIZATION (include if authorization has changed since application was submitted)**

I hereby authorize \_\_\_\_\_ to act in my behalf as my representative in the submittal of this report, and to furnish upon request, supplemental information in support of this submittal.

---

**Permittee’s Signature**

**Date**

**\*This Report and Notification Cover Sheet must be signed by the Permittee or a duly authorized representative and included with all written submittals.**

**A. Part A – Project Reporting**

**1. Report Type 1 - Monthly Report NOT APPLICABLE**

**2. Report Type 2 - Annual Report**

- a. **Report Purpose** - Notify the Central Valley Water Board staff of Project status during both the active discharge and post-discharge monitoring periods.
- b. **When to Submit** - Annual reports shall be submitted each year on the 1st day of July beginning one year following the effective date of this WDR. Annual reports shall continue until a Notice of Project Complete Letter is issued to the Permittee.
- c. **Report Contents** - The contents of the annual report shall include the topics indicated below for each project period. Report contents are outlined in Annual Report Topics below.

**During the Active Discharge Period**

- **Topic 1: Construction Summary**
- **Topic 2: Mitigation for Temporary Impacts Status**
- **Topic 3: Compensatory Mitigation for Permanent Impacts Status**

**During the Post-Discharge Monitoring Period**

- **Topic 2: Mitigation for Temporary Impacts Status**
- **Topic 3: Compensatory Mitigation for Permanent Impacts Status**

i. Annual Report Topic 1 - Construction Summary

**When to Submit** - With the annual report during the Active Discharge Period.

**Report Contents** - Project progress and schedule including initial ground disturbance, site clearing and grubbing, road construction, site construction, and the implementation status of construction storm water best management practices (BMPs). If construction has not started, provide estimated start date and reasons for delay.

- 1) Map showing general Project progress.
- 2) If applicable:
  - a) Summary of Conditional Notification and Report Types 6 and 7 (Part C below).
  - b) Summary of Project Deviations. See Project Deviation Attachment for further information.

ii. Annual Report Topic 2 - Mitigation for Temporary Impacts Status

**When to Submit** - With the annual report during both the Active Discharge Period and Post-Discharge Monitoring Period.

**Report Contents -**

- 1) Planned date of initiation and map showing locations of mitigation for temporary impacts to waters of the state and all upland areas of temporary disturbance which could result in a discharge to waters of the state.
- 2) If mitigation for temporary impacts has already commenced, provide a map and information concerning attainment of performance standards contained in the restoration plan.
- iii. Annual Report Topic 3 - Compensatory Mitigation for Permanent Impacts Status

**When to Submit** - With the annual report during both the Active Discharge Period and Post-Discharge Monitoring Period.

**Report Contents - \*If not applicable report N/A.**

**1) Part A. Permittee Responsible**

- a) Planned date of initiation of compensatory mitigation site installation.
- b) If installation is in progress, a map of what has been completed to date.
- c) If the compensatory mitigation site has been installed, provide a final map and information concerning attainment of performance standards contained in the compensatory mitigation plan.

**2) Part B. Mitigation Bank or In-Lieu Fee**

- a) Status or proof of purchase of credit types and quantities.
- b) Include the name of bank/ILF Program and contact information.
- c) If ILF, location of project and type if known.

**B. Part B – Project Status Notifications**

**1. Report Type 3 - Commencement of Construction**

- a. **Report Purpose** - Notify Central Valley Water Board staff prior to the start of construction.
- b. **When to Submit** - Must be received at least seven (7) days prior to start of initial ground disturbance activities.
- c. **Report Contents -**
  - i. Date of commencement of construction.
  - ii. Anticipated date when discharges to waters of the state will occur.

- iii. Project schedule milestones including a schedule for onsite compensatory mitigation, if applicable.
- iv. Construction Storm Water General Permit WDID No.
- v. Proof of purchase of compensatory mitigation for permanent impacts from the mitigation bank or in-lieu fee program.

## 2. Report Type 4 - Request for Notice of Completion of Discharges Letter

- a. **Report Purpose** - Notify Central Valley Water Board staff that post-construction monitoring is required and that active Project construction, including any mitigation and permittee responsible compensatory mitigation, is complete.
- b. **When to Submit** - Must be received by Central Valley Water Board staff within thirty (30) days following completion of all Project construction activities.
- c. **Report Contents** -
  - i. Status of storm water Notice of Termination(s), if applicable.
  - ii. Status of post-construction storm water BMP installation.
  - iii. Pre- and post-photo documentation of all Project activity sites where the discharge of dredge and/or fill/excavation was authorized.
  - iv. Summary of Project Deviation discharge quantities compared to initial authorized impacts to waters of the state, if applicable.
  - v. An updated monitoring schedule for mitigation for temporary impacts to waters of the state and permittee responsible compensatory mitigation during the post-discharge monitoring period, if applicable.

## 3. Report Type 5 - Request for Notice of Project Complete Letter

- a. **Report Purpose** - Notify Central Valley Water Board staff that construction and/or any post-construction monitoring is complete, or is not required, and no further Project activity is planned.
- b. **When to Submit** - Must be received by Central Valley Water Board staff within thirty (30) days following completion of all Project activities.
- c. **Report Contents** -
  - i. Part A: Mitigation for Temporary Impacts
    - 1) A report establishing that the performance standards outlined in the restoration plan have been met for Project site upland areas of temporary disturbance which could result in a discharge to waters of the state.
    - 2) A report establishing that the performance standards outlined in the restoration plan have been met for restored areas of temporary

impacts to waters of the state. Pre- and post-photo documentation of all restoration sites.

- ii. Part B: Permittee Responsible Compensatory Mitigation
  - 1) A report establishing that the performance standards outlined in the compensatory mitigation plan have been met.
  - 2) Status on the implementation of the long-term maintenance and management plan and funding of endowment.
  - 3) Pre- and post-photo documentation of all compensatory mitigation sites.
  - 4) Final maps of all compensatory mitigation areas (including buffers).
- iii. Part C: Post-Construction Storm Water BMPs
  - 1) Date of storm water Notice of Termination(s), if applicable.
  - 2) Report status and functionality of all post-construction BMPs.
  - 3) Dates and report of visual post-construction inspection during the rainy season as indicated in Section C.4.

### **C. Part C – Conditional Notifications and Reports**

#### **1. Report Type 6 - Accidental Discharge of Hazardous Material Report**

- a. **Report Purpose** - Notifies Central Valley Water Board staff that an accidental discharge of hazardous material has occurred.
- b. **When to Submit** - Within five (5) working days of notification to the Central Valley Water Board of an accidental discharge. Continue reporting as required by Central Valley Water Board staff.
- c. **Report Contents** -
  - i. The report shall include the OES Incident/Assessment Form, a full description and map of the accidental discharge incident (i.e. location, time and date, source, discharge constituent and quantity, aerial extent, and photo documentation). If applicable, the OES Written Follow-Up Report may be substituted.
  - ii. If applicable, any required sampling data, a full description of the sampling methods including frequency/dates and times of sampling, equipment, locations of sampling sites.
  - iii. Locations and construction specifications of any barriers, including silt curtains or diverting structures, and any associated trenching or anchoring.

#### **2. Report Type 7 - Violation of Compliance with Water Quality Standards Report**

- a. **Report Purpose** - Notifies Central Valley Water Board staff that a

violation of compliance with water quality standards has occurred.

- b. **When to Submit** - The Permittee shall report any event that causes a violation of water quality standards within three (3) working days of the noncompliance event notification to Central Valley Water Board staff.
- c. **Report Contents** - The report shall include: the cause; the location shown on a map; and the period of the noncompliance including exact dates and times. If the noncompliance has not been corrected, include: the anticipated time it is expected to continue; the steps taken or planned to reduce, eliminate, and prevent reoccurrence of the noncompliance; and any monitoring results if required by Central Valley Water Board staff.

### 3. **Report Type 8 - In-Water Work and Diversions Water Quality Monitoring Report**

- a. **Report Purpose** - Notifies Central Valley Water Board staff of the start and completion of in-water work. Reports the sampling results during in-water work and during the entire duration of temporary surface water diversions.
- b. **When to Submit** – At least forty-eight (48) hours prior to the start of in-water work. Within three (3) working days following the completion of in-water work. Surface water monitoring reports to be submitted two (2) weeks on initiation of in-water construction and during entire duration of temporary surface water diversions. Continue reporting in accordance with the approved water quality monitoring plan or as indicated in Section C.3.
- c. **Report Contents** - As required by the approved water quality monitoring plan or as indicated in Section C.3.

### 4. **Report Type 9 - Modifications to Project Report**

- a. **Report Purpose** - Notifies Central Valley Water Board staff if the Project, as described in the application materials, is altered in any way or by the imposition of subsequent permit conditions by any local, state or federal regulatory authority.
- b. **When to Submit** - If Project implementation as described in the application materials is altered in any way or by the imposition of subsequent permit conditions by any local, state or federal regulatory authority.
- c. **Report Contents** - A description and location of any alterations to Project implementation. Identification of any Project modifications that will interfere with the Permittee's compliance with the Order.

### 5. **Report Type 10 - Transfer of Property Ownership Report**

- a. **Report Purpose** - Notifies Central Valley Water Board staff of change in ownership of the Project or Permittee-responsible mitigation area.

**b. When to Submit** - At least 10 working days prior to the transfer of ownership.

**c. Report Contents** -

- i. A statement that the Permittee has provided the purchaser with a copy of this Order and that the purchaser understands and accepts:
  - 1) the Order's requirements and the obligation to implement them or be subject to administrative and/or civil liability for failure to do so; and
  - 2) responsibility for compliance with any long-term BMP maintenance plan requirements in this Order. Best Management Practices (BMPs) is a term used to describe a type of water pollution or environmental control.
- ii. A statement that the Permittee has informed the purchaser to submit a written request to the Central Valley Water Board to be named as the permittee in a revised order.

## **6. Report Type 11 - Transfer of Long-Term BMP Maintenance Report**

**a. Report Purpose** - Notifies Central Valley Water Board staff of transfer of long-term BMP maintenance responsibility.

**b. When to Submit** - At least 10 working days prior to the transfer of BMP maintenance responsibility.

**c. Report Contents** - A copy of the legal document transferring maintenance responsibility of post-construction BMPs.

**(This page intentionally left blank)**

## **SIGNATORY REQUIREMENTS**

All documents submitted in compliance with this Order shall meet the following signatory requirements:

- A.** All applications, reports, or information submitted to the Central Valley Water Quality Control Board (Central Valley Water Board) must be signed and certified as follows:
  - 1.** For a corporation, by a responsible corporate officer of at least the level of vice-president.
  - 2.** For a partnership or sole proprietorship, by a general partner or proprietor, respectively.
  - 3.** For a municipality, or a state, federal, or other public agency, by either a principal executive officer or ranking elected official.
  
- B.** A duly authorized representative of a person designated in items 1.a through 1.c above may sign documents if:
  - 1.** The authorization is made in writing by a person described in items 1.a through 1.c above.
  - 2.** The authorization specifies either an individual or position having responsibility for the overall operation of the regulated activity.
  - 3.** The written authorization is submitted to the Central Valley Water Board staff Contact prior to submitting any documents listed in item 1 above.
  
- C.** Any person signing a document under this section shall make the following certification:

*“I certify under penalty of law that I have personally examined and am familiar with the information submitted in this document and all attachments and that, based on my inquiry of those individuals immediately responsible for obtaining the information, I believe that the information is true, accurate, and complete. I am aware that there are significant penalties for submitting false information, including the possibility of fine and imprisonment.”*

**(This page intentionally left blank)**

## **PROJECT DEVIATION PROCEDURES**

### **I. Introduction**

These procedures are put into place to preclude the need for Order amendments for minor changes in the Project routing or location. Minor changes or modifications in project activities are often required by the Permittee following start of construction. These deviations may potentially increase or decrease impacts to waters of the state. In such cases, a Project Deviation, as defined in Section K of the Order, may be requested by the Permittee as set forth below:

### **II. Process Steps**

#### **A. Who may apply:**

The Permittee or the Permittee's duly authorized representative or agent (hereinafter, "Permittee") for this Order.

#### **B. How to Apply:**

By letter or email to the Water Quality Certification Unit staff designated as the contact for this Order.

#### **C. Project Deviation Request:**

The Permittee will request verification from the Central Valley Water Board staff that the project change qualifies as a Project Deviation, as opposed to requiring an amendment to the Order. The request should:

1. Describe the Project change or modification:
    - a. Proposed activity description and purpose;
    - b. Why the proposed activity is considered minor in terms of impacts to the waters of the state;
    - c. How the Project activity is currently addressed in the Order; and,
    - d. Why a Project Deviation is necessary for the Project.
  2. Describe location (latitude/longitude coordinates), the date(s) it will occur, as well as associated impact information (i.e., temporary or permanent, federal or non-federal jurisdiction, water body name/type, estimated impact area, etc.) and minimization measures to be implemented.
  3. Provide all updated environmental survey information for the new impact area.
  4. Provide a map that includes the activity boundaries with photos of the site.
  5. Provide verification of any mitigation needed according to the Order conditions.
-

6. Provide verification from the CEQA Lead Agency that the proposed changes or modifications do not trigger the need for a subsequent environmental document, an addendum to the environmental document, or a supplemental EIR. (Cal. Code Regs., tit. 14, §§ 15162-15164.).

**D. Post-Discharge Project Deviation Reporting:**

1. Within 30 calendar days of completing the approved Project Deviation activity, the Permittee will provide a post-discharge activity report that includes the following information.
  - a. Activity description and purpose;
  - b. Activity location, start date and completion date;
  - c. Erosion control and pollution prevention measures applied;
  - d. The net change in impact area by water body type(s) in acres, linear feet and cubic yards;
  - e. Mitigation plan, if applicable; and
  - f. Map of activity location and boundaries; post-construction photos.

**E. Annual Summary Deviation Report:**

1. Until a Notice of Completion of Discharges Letter or Notice of Project Complete Letter is issued, include in the Annual Project Report (see Construction Notification and Reporting attachment) a compilation of all Project Deviation activities through the reporting period with the following information.
  - a. Site name(s);
  - b. Date(s) of Project Deviation approval;
  - c. Location(s) of authorized activities;
  - d. Impact area(s) by water body type prior to activity in acres, linear feet and cubic yards, as originally authorized in the Order;
  - e. Actual impact area(s) by water body type in acres, linear feet and cubic yards, due to Project Deviation activity(ies);
  - f. The net change in impact area by water body type(s) in acres, linear feet and cubic yards; and
  - g. Mitigation to be provided (approved mitigation ratio and amount).