

CALIFORNIA REGIONAL WATER QUALITY CONTROL BOARD
COLORADO RIVER BASIN REGION

ORDER NO. 81-15

WASTE DISCHARGE REQUIREMENTS
FOR
TARAVAT CORPORATION
North of El Centro - Imperial County

The California Regional Water Quality Control Board, Colorado River Basin Region, finds that:

1. Taravat Corporation, (hereinafter also referred to as the discharger), 287 West Aten Road, El Centro, CA 92243, submitted a Report of Waste Discharge dated November 19, 1980.
2. This discharger plans to fabricate aircraft parts by using a chemical milling process which removes excess material by an appropriate etchant while selected surfaces are protected by an effective mask. The milled material will predominantly be aluminum and iron.
 - a. Waste etchant, both acid and caustic solutions, would be periodically dumped and recharged. The acid solution would consist of muriatic acid, nitric acid and iron. The caustic solution would consist of sodium hydroxide, sodium aluminate and sodium sulfide.
 - b. Rinsewater from rinsing of parts after chemical milling to neutralize the action of the etchant.
3. A total volume of wastewater of about 5000 gallons per month would be discharged to earthen basins for final disposal by evaporation and infiltration. Said basins are located in the NE 1/4, Section 30, T15S, R14E, SBB&M.
4. The Water Quality Control Plan for the West Colorado River Basin was adopted on April 10, 1975. The Basin Plan contains water quality objectives for Imperial Hydrologic Unit, and this Order implements these objectives.
5. Groundwaters at the site are saline and are not presently beneficially used. Shallow groundwater in this area has a total dissolved solids content of 50,200 mg/l. Deep groundwaters are being investigated for geothermal development.

*Rescinded
1/23/85*

6. The Board has notified the discharger and interested agencies and persons of its intent to prescribe waste discharge requirements for the proposed discharge.
7. The Board in a public meeting heard and considered all comments pertaining to the proposed discharge.
8. The Imperial County Department of Public Works has prepared Environmental Impact Report EIR 13-73 (filing date January 5, 1973) for this industrial area. The Regional Board has reviewed this Environmental Impact Report. The below waste discharge requirements are designed to assure against any significant adverse effects on water quality.

IT IS HEREBY ORDERED, the discharger shall comply with the following:

A. Discharge Specifications

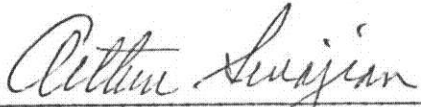
1. Neither the treatment nor the discharge of wastewater shall create a pollution or a nuisance as defined in Division 7 of the California Water Code .
2. The discharged wastewater shall not enter any rivers, canals, drainage channels, or drains (including subsurface drainage systems) which could provide flow or seepage to Salton Sea.
3. A minimum freeboard of at least two (2) feet shall be maintained in each wastewater disposal basin.
4. Adequate measures shall be taken to assure that flood or surface drainage waters do not erode or otherwise render portions of the discharge facilities inoperable.
5. The wastewater is to be discharged to the basins described in Finding No. 3 only.
6. Sludge or other materials removed from basins shall be discharged at a solid waste disposal site approved by the Regional Board to receive this waste with a copy of the receipt of delivery forwarded to the Regional Board.

B. Provisions

1. The discharger shall comply with "Monitoring and Reporting Program No. 81-15" and future revisions thereto, as specified by the Executive Officer.
2. Prior to any modifications in this facility which would result in material change in the quality or quantity of wastewater discharged, or any material change in location of discharge, the discharger shall report in writing to the Regional Board.

3. In the event of any change in control or ownership of land or waste disposal facilities described herein, the discharger shall:
 - a. Notify this Board of such change; and
 - b. Notify the succeeding owner or operator by letter of the existence of this Order, a copy of which shall be filed with this Board.

I, Arthur Swajian, Executive Officer, do hereby certify the foregoing is a full, true, and correct copy of an Order adopted by the California Regional Water Quality Control Board, Colorado River Basin Region, on January 28, 1981.



Executive Officer

CALIFORNIA REGIONAL WATER QUALITY CONTROL BOARD
COLORADO RIVER BASIN REGION

MONITORING AND REPORTING PROGRAM NO. 81-15
FOR
TARAVAT CORPORATION
North of El Centro - Imperial County

Location of Discharge: NE 1/4, Section 30, T15S, R14E, SBB&M
(287 West Aten Road).

MONITORING

<u>Description</u>	<u>Units</u>	<u>Reporting Frequency</u>
1. Wastewater discharged to basins	Gallons	Quarterly
2. Liquid depth in each basin	Feet	Quarterly

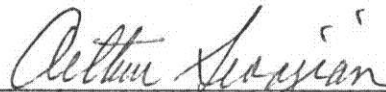
REPORTING

Quarterly monitoring reports shall be submitted to the Regional Board by January 15, April 15, July 15 and October 15, of each year.

Forward monitoring reports to:

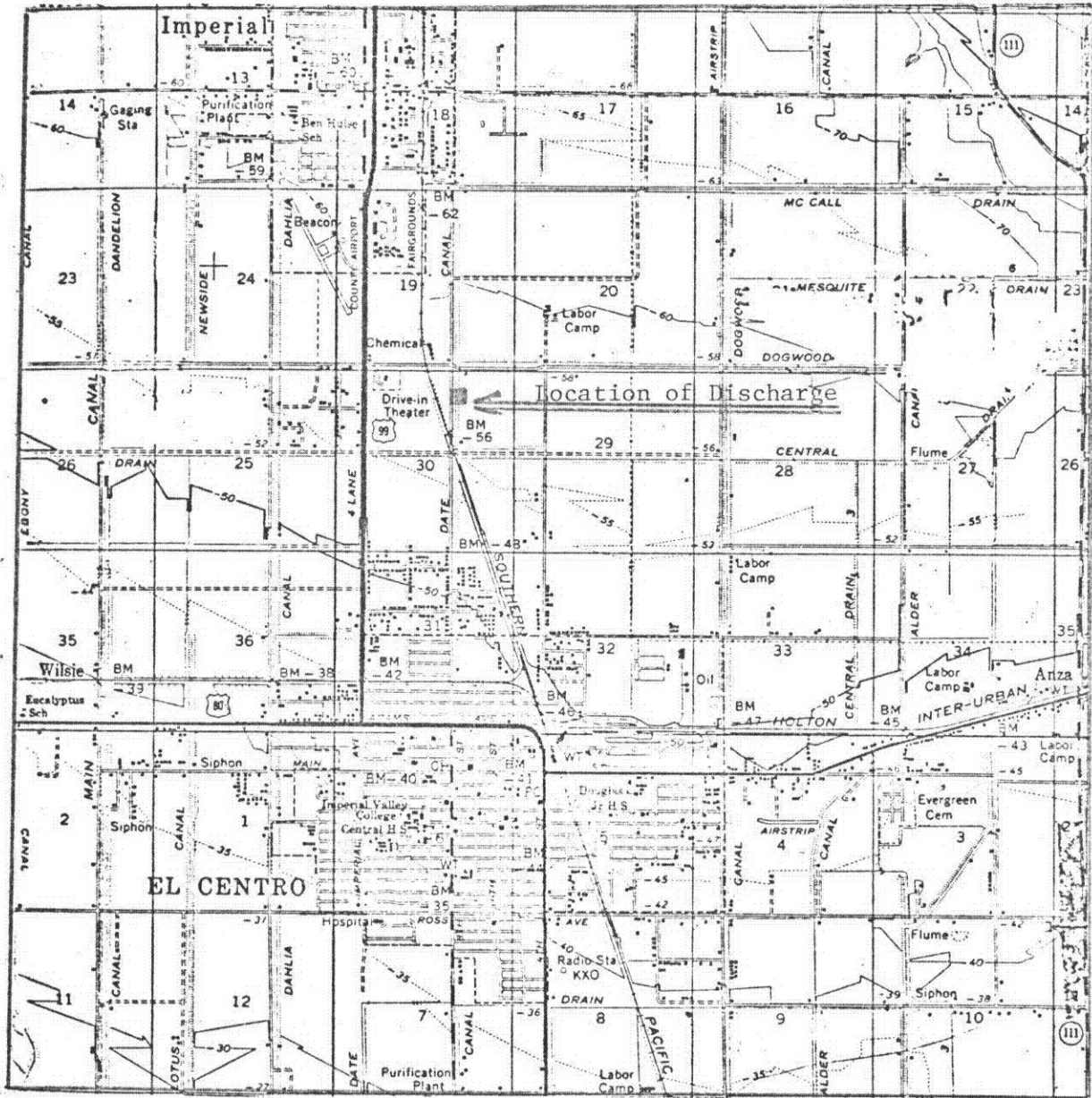
California Regional Water Quality Control Board
Colorado River Basin Region
73-271 Highway 111, Suite 21
Palm Desert, CA 92260

ORDERED BY:


Executive Officer

DATE : January 28, 1981

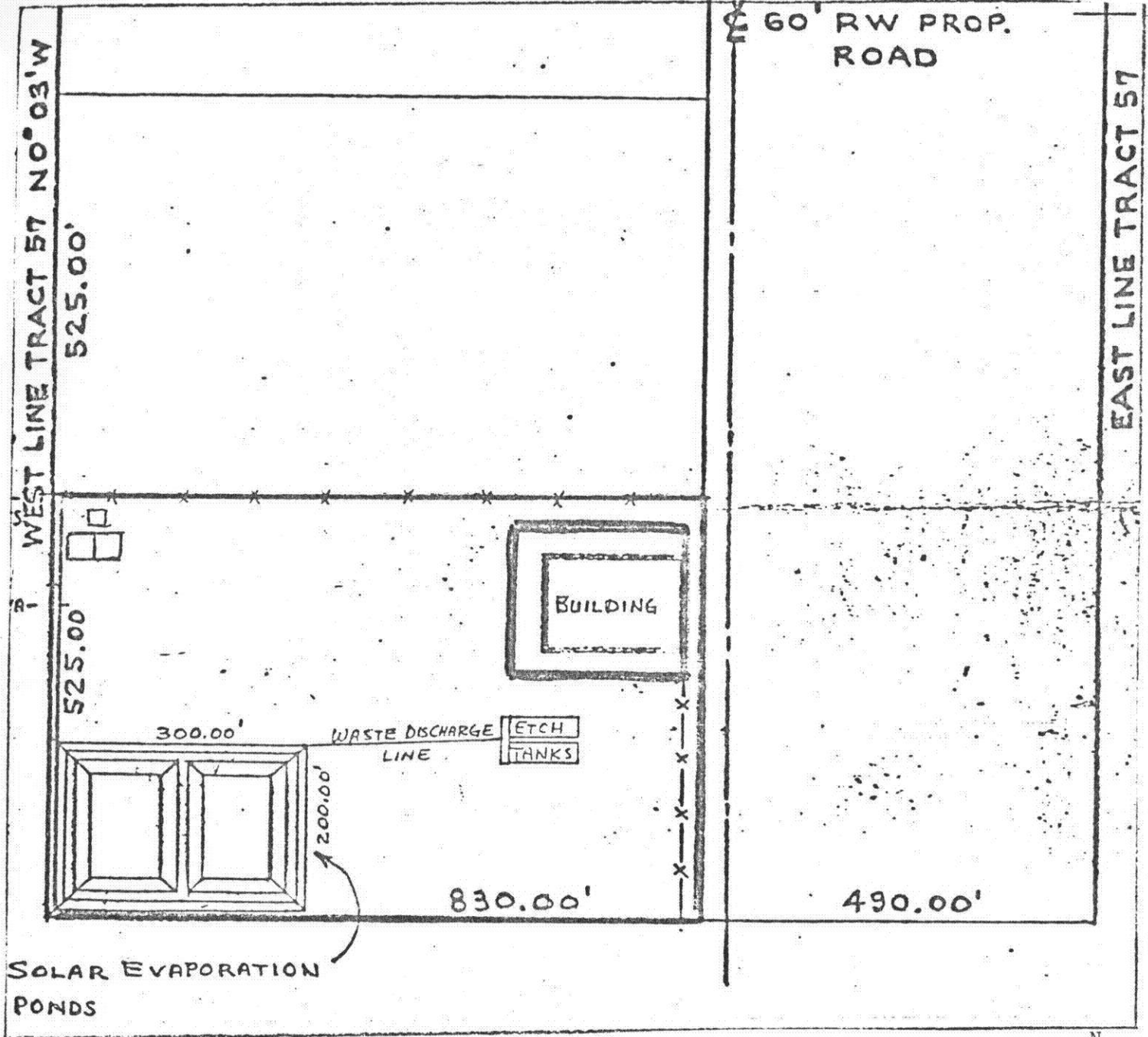
CALIFORNIA REGIONAL WATER QUALITY CONTROL BOARD - 7



SITE MAP
 TARAVAT CORPORATION
 North of El Centro - Imperial County
 Discharge Location: NE 1/4, Section 30, T15S, R14E, SBB&M (287 West Aten Road)
 USGS Brawley 15 min. Topographic Map

Scale:
 1" = 1 mile

Order No. 81-15



SITE LAYOUT
TARAVAT CORPORATION
North of El Centro - Imperial County
Discharge Location: NE 1/4, Section 30, T15S, R14E,
SBB&M, (287 West Aten Road)