

CALIFORNIA REGIONAL WATER QUALITY CONTTROL BOARD
COLORADO RIVER BASIN REGION

ORDER NO. 81-68

WASTE DISCHARGE REQUIREMENTS
FOR
EMERALD COVE RESORT
Northeast of Earp - San Bernardino County

The California Regional Water Quality Control Board, Colorado River Basin Region, finds that:

1. Emerald Cove Resort, Inc. (hereinafter also referred to as the discharger), Route 2, Box 618 A, Parker, Arizona 86344, submitted a Report of Waste Discharge dated March 31, 1981.
2. The discharger proposes to discharge a maximum of 64,000 gallons-per-day of domestic sewage with the addition of 400 recreational vehicles and two restrooms to an existing mobile home park having 15 mobilehome spaces. Wastewater would be discharged by means of septic tank/leach field disposal systems to be located in the NW 1/4 of Section 2, T1N, R26E, SBB&M.
3. The discharger is reserving areas of sufficient size for possible future 100 percent replacement of the seepage pits.
4. There are no domestic wells within 200 feet of the proposed discharge facilities described in Findings No. 2 and 3 (above).
5. The discharger states that the wastewater disposal facilities are more than 200 feet from the high water line of the Colorado River.
6. The Water Quality Control Plan for the East Colorado River Basin was adopted by the Board on April 10, 1975. The Basin Plan contains water quality objectives for the Vidal Hydrologic Subunit.
7. The beneficial uses of the groundwater of the Colorado Hydrologic Unit are:
 - a. Municipal supply
 - b. Industrial supply
 - c. Agricultural supply
8. The Board has notified the discharger and interested agencies and persons of its intent to prescribe waste discharge requirements for the proposed discharge.

9. The Board in a public meeting heard and considered all comments pertaining to the proposed discharge.
10. The U.S. Bureau of Land Management has approved Environmental Impact Study EA No. AZ-050-1-28 (filing date January 19, 1981) for this proposed expansion of this park. The Regional Board has reviewed this finding of no significant impact pursuant to Section 15063(b) of Title 24, California Administrative Code. The below waste discharge requirements are designed to assure against any significant adverse effects on water quality.

IT IS HEREBY ORDERED, the discharger shall comply with the following:

A. Discharge Specifications

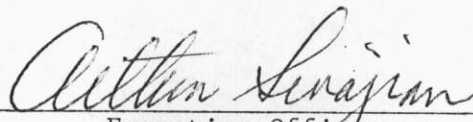
1. Neither the treatment nor the discharge of wastewater shall create a pollution or nuisance as defined in Division 7 of the California Water Code.
2. No wastewater other than domestic sewage shall be discharged at this location.
3. Wastewater discharged subsurface shall be retained underground with no surfacing.
4. Adequate measures shall be taken to assure that flood or surface drainage waters do not erode or otherwise render portions of the discharge facilities inoperable.
5. Septic tank cleanings shall be discharged only by a duly authorized service.

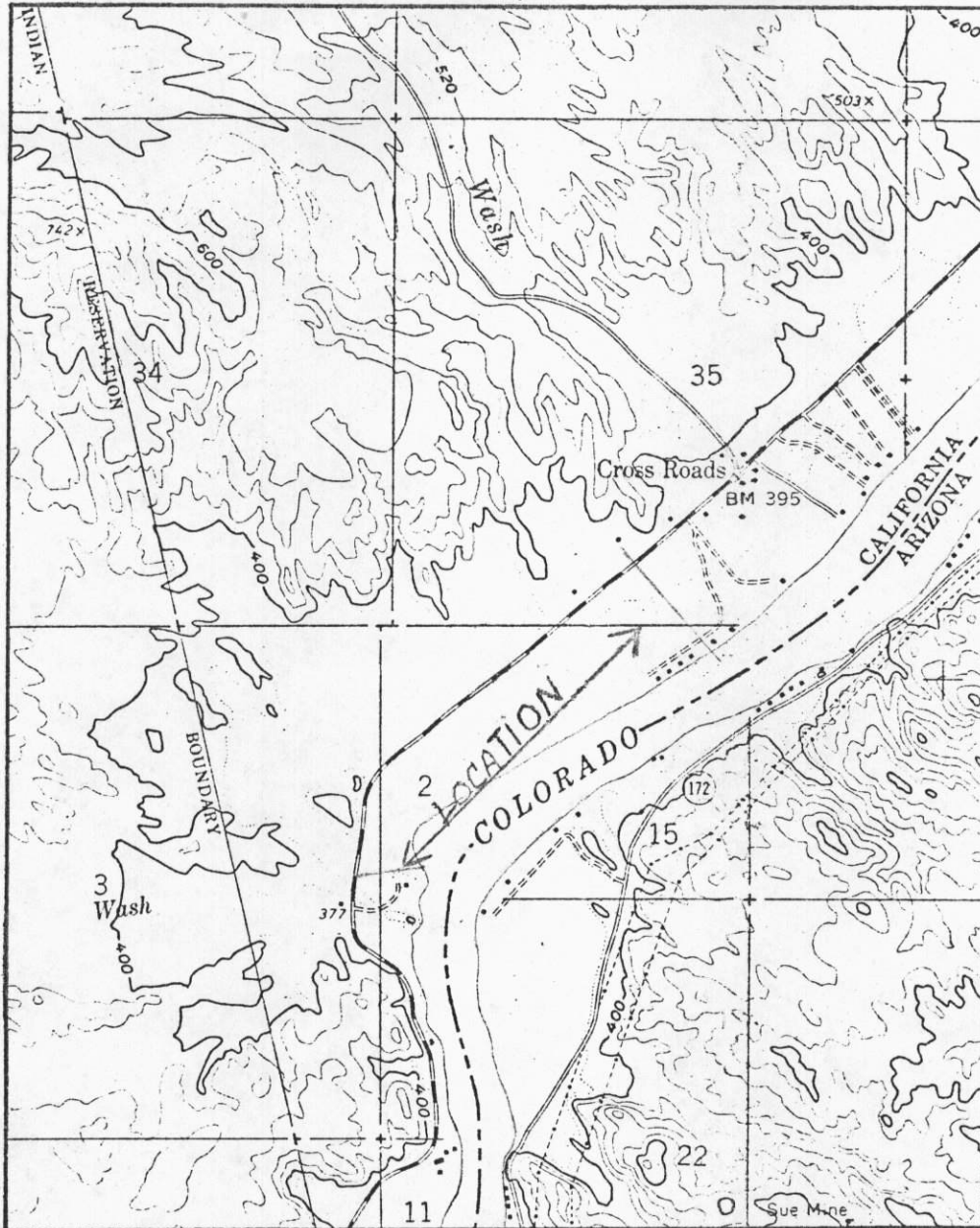
B. Provisions

1. Sufficient land area shall be reserved for possible future 100 percent replacement of the leach fields, until such time as this park is connected to a municipal sewerage system.
2. Upon request from this Board's Executive Officer, the discharger shall furnish technical and/or monitoring reports on the treatment and discharge of wastes.
3. Prior to any modifications in this facility which would result in material change in the quality or quantity of wastewater discharged, or any material change in location of discharge, the discharger shall report in writing to the Regional Board.

4. Prior to any change of ownership of this mobile home and recreational vehicle park, the discharger shall:
 - a. Specify as a condition of transfer that the area specified in Provision B.1. (above) remain servient to the development, for the purpose of providing additional subsurface sewage disposal capacity, until such time as this development is connected to a municipal sewerage system.
 - b. Notify the succeeding owner, in writing, of the existence of this Order, and forward a copy of said correspondence to the Regional Board.

I, Arthur Swajian, Executive Officer, do hereby certify the foregoing is a full, true, and correct copy of an Order adopted by the California Regional Water Quality Control Board, Colorado River Basin Region, on July 8, 1981.


Executive Officer



Earp 4.5 miles

SITE MAP
EMERALD COVE RESORT
Northeast of Earp - San Bernardino County
Portion of the NW 1/4 of Section 2, T1N, R26E, SBB&M
USGS Cross Roads 7.5 Min. Topographic Map