

CALIFORNIA REGIONAL WATER QUALITY CONTROL BOARD  
COLORADO RIVER BASIN REGION

ORDER NO. 89-010

WASTE DISCHARGE REQUIREMENTS  
FOR  
COUNTY OF SAN BERNARDINO  
LUCERNE VALLEY WASTE MANAGEMENT FACILITY  
Northeast of Lucerne Valley - San Bernardino County

The California Regional Water Quality Control Board, Colorado River Basin Region, finds that:

1. The County of San Bernardino, (hereinafter also referred to as the discharger), 825 East Third Street, San Bernardino, California 92415, submitted a report of waste discharge on May 5, 1988, and current information to update the waste discharge requirements for an existing Class III landfill northeast of Lucerne Valley.
2. The Lucerne Valley Waste Management Facility (WMF) is located in the NW¼ of Section 24, T5N, R1E, SBB&M about 8 miles northeast of Lucerne Valley east of Camp Rock Road as shown in Attachment "A" which is incorporated herein and made part of this Order. The facility is owned by the County of San Bernardino.
3. The WMF has been subject to waste discharge requirements under Board Order No. 83-068. The waste discharge requirements are being updated to comply with Section 13263 of the California Water Code, and to incorporate the applicable provisions of Subchapter 15, Chapter 3, Title 23 of the California Code of Regulations.
4. The discharger submitted a Solid Waste Assessment Testing (SWAT) report on June 30, 1988. The SWAT report contains most of the information required in said Subchapter 15. The remainder of the information required will be submitted in accordance with a time schedule included in the provisions of this Order.
5. Subsequently the facility will be reviewed for appropriate classification, in accordance with the criteria set forth in said Subchapter 15 for Class III landfills, at the time the SWAT report is reviewed. This will be based on the technical data contained in the SWAT report and other relevant information.
6. It will be necessary to determine background water quality of the ground water in the proximate area of the facility from a minimum of one year's sampling, after which the Regional Board may revise this Order to set numerical limitations on water quality constituents for protection of the ground water from the effects of the WMF. The revised Order will also include the detection and verification

Adopted  
9-15-93  
Amended  
B.O.#  
93-071

monitoring programs and the corrective action program required in Section 2551 of said Subchapter 15.

7. The discharger discharges 12 cubic yards per day of non-hazardous solid waste as defined in said Subchapter 15. The site has a design capacity of 100,000 cubic yards, of which approximately 10,000 cubic yards remain. Total site area is 19 acres. It has an estimated life of 2 years. The discharger is considering closing this facility within the next two years and converting the site into a transfer station.
8. The discharger operates the WMF as a landfill utilizing the area method of disposal. The site presently receives residential refuse, commercial refuse, demolition wastes and agricultural wastes.
9. The land surface slopes westward toward Lucerne Lake. The area surrounding the site is relatively flat. Drainage in the area is controlled by a dry wash adjacent to the landfill.
10. The WMF is underlain by Quaternary alluvial sediments composed mostly of coarse-grained material. Fractured crystalline bedrock composed of quartz monzonite underlies the alluvium. The fractured bedrock occurs at a depth of 41 feet below the ground surface in the vicinity of the site. Water quality data indicates that the bedrock is hydraulically interconnected.
11. Ground water in the vicinity of the site occurs in unconfined conditions. Ground water depths measured in April 1988 in monitoring wells, constructed by the discharger as part of the SWAT investigation, ranged from 187 feet to 198 feet below the ground surface.
12. The discharger has constructed three 4-inch ground water monitoring wells at the site, which meet the requirements of Article 5 of said Subchapter 15, as shown in Attachment "B" which is incorporated herein and made part of this Order.
13. Analyses of ground water samples collected in April, 1988 from upgradient monitoring wells LV2 and LV3 indicate total dissolved solids content of 6,300 mg/l and 1,400 mg/l, respectively.
14. The Water Quality Control Plan for the Colorado River Basin Region of California was adopted by the Regional Board on November 14, 1984.
15. The beneficial uses of ground water of the Lucerne Hydrologic Subunit are:
  - a. Municipal supply
  - b. Industrial supply
  - c. Agricultural supply
16. There is one domestic well upgradient and within 500 feet of the WMF.

17. Land within one mile of the site is zoned as a rural conservation area.
18. The Board has notified the discharger and interested agencies and persons of its intent to update waste discharge requirements for the discharge.
19. The Board in a public meeting heard and considered all comments pertaining to the existing discharge.
20. These waste discharge requirements govern an existing facility, which the discharger is currently operating. Therefore, this facility is exempt from the provisions of the California Environmental Quality Act in accordance with Section 15301, Chapter 3, Title 14 of the California Code of Regulations.

IT IS HEREBY ORDERED that the discharger shall comply with the following:

A. Discharge Specifications

1. The treatment or disposal of waste shall not cause pollution or nuisance as defined in Section 13050 of the California Water Code.
2. Wastes shall be discharged only into waste management units specifically designed for their containment and shall be confined to the waste management facility as shown in Attachment "B".
3. Waste material shall not be discharged on any surface which is less than five feet above the highest anticipated ground water level.
4. The discharge shall not adversely affect water quality for designated beneficial uses.
5. The waste management units shall be designed, constructed, operated and maintained to prevent inundation or washout due to floods from a 100-year, 24-hour storm.
6. Surface drainage from tributary areas, and internal site drainage from surface or subsurface sources, shall not contact or percolate through the wastes discharged at this site.
7. The exterior surfaces of the disposal area including the intermediate and final landfill covers shall be graded and maintained to promote lateral runoff of precipitation and to prevent ponding.
8. Solid waste shall not be placed in ponded water.
9. The discharger shall remove and relocate any wastes which are discharged at this site in violation of these requirements.

B. Prohibitions

1. The discharge or deposit of hazardous waste (as defined in said Subchapter 15) at this site is prohibited.
2. The discharge or deposit of designated waste (as defined in said Subchapter 15) at this site is prohibited unless otherwise approved by the Executive Officer, in accordance with the provisions of Section 2520 (a)(1) of said Subchapter 15.
3. The discharge of liquid or semi-solid waste (i.e., waste containing less than 50 percent solids) to the landfill units is prohibited unless otherwise approved by the Executive Officer, in accordance with the provisions of Section 2520 (d)(3) of said Subchapter 15.
4. The discharge of wastes to surface waters, surface water drainage courses or to ground waters is prohibited.
5. The discharge or deposit of waste to land not owned or controlled by the discharger is prohibited.

C. Provisions

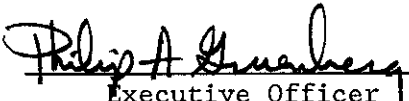
1. The discharger shall maintain a copy of this Order at the site and make it available at all times to site-operating personnel.
2. The discharger shall notify the Regional Board in writing of any proposed change in ownership or responsibility for construction or operation of the waste management facility.
3. The discharger shall notify the Regional Board in writing of any material change or proposed change in the character, location, or volume of waste discharged and of any proposed expansion plans. This notification shall be accompanied by an amended report of waste discharge and any additional information as may be required by the Regional Board's Executive Officer.
4. The discharger shall comply with "Monitoring and Reporting Program No. 89-010" and future revisions thereto, as specified by the Regional Board's Executive Officer.
5. The discharger shall maintain legible records on the volume and type of each waste discharged at the site. These records shall be available for review by representatives of the Board at any time during normal business hours. At the beginning of the post-closure maintenance period, copies of these records shall be sent to the Regional Board.
6. The discharger shall maintain visible monuments identifying the boundary limits of the entire waste management facility.
7. By July 1, 1989, the discharger shall submit to the Regional Board and to the State Department of Health Services for review and approval, a report describing a periodic load-checking program to be implemented

by the discharger to ensure that wastes prohibited by this Order are not discharged to the disposal site.

8. By July 1, 1989, the discharger shall submit to the Regional Board for approval by the Executive Officer, a plan and time schedule for compliance with the requirements of the following sections of said Subchapter 15.
  - a. Section 2551: Required Programs
  - b. Section 2555: General Ground Water Monitoring Requirements
  - c. Section 2595: Waste Management Unit Characteristics
  - d. Section 2596: Design Report and Operations Plan
9. One year prior to the anticipated closure of the facility or any unit (portion) thereof, the discharger shall submit to the Regional Board, for review and approval by the Executive Officer, a closure and post-closure maintenance plan in accordance with Section 2597 of said Subchapter 15.
10. The discharger shall immediately notify the Regional Board of any flooding, slope failure or other change in site conditions which could impair the integrity of waste containment facilities or of precipitation and drainage control structures.
11. In the event of any change in ownership of the disposal site, the discharger shall notify the succeeding owner or operator in writing of the existence of this Order. A copy of that notification shall be sent to the Regional Board.
12. The discharger shall comply with all applicable provisions of said Subchapter 15 that are not specifically referred to in this Order.
13. Annually, prior to the 1st day of November, any necessary erosion control measures shall be implemented and any necessary construction, maintenance, or repairs of precipitation and drainage control facilities shall be completed and a report thereof submitted to the Regional Board by November 15 of each year.
14. Water used for site maintenance shall be limited to amounts necessary for dust control.
15. This Order does not authorize violation of any federal, state or local laws and regulations.

IT IS FURTHER ORDERED that Board Order No. 83-68 be superseded by this Order.

I, Phil Gruenberg, Executive Officer, do hereby certify the foregoing is a full, true and correct copy of an Order adopted by the California Regional Water Quality Control Board, Colorado River Basin Region, on January 25, 1989.

  
Executive Officer

CALIFORNIA REGIONAL WATER QUALITY CONTROL BOARD  
COLORADO RIVER BASIN REGION

MONITORING AND REPORTING PROGRAM NO. 89-010  
FOR  
COUNTY OF SAN BERNARDINO  
LUCERNE VALLEY WASTE MANAGEMENT FACILITY  
Northeast of Lucerne Valley - San Bernardino County

Location of Discharge: NW¼ of Section 24, T5N, R1E, SBB&M

WASTE MONITORING

A. The discharger shall monitor all wastes discharged to the disposal site and report to the Regional Board the following:

<u>Item</u>	<u>Reporting Unit</u>	<u>Frequency</u>
1. Refuse discharged	Cubic yards	Quarterly
2. Any wastes discharged other than those allowed in the requirement	Type, volume & approximate location	Immediately upon becoming aware of said discharge
3. Landfill capacity remaining	Percent	Annually

GROUND WATER MONITORING

The ground water monitoring wells shall be sampled quarterly during March, June, September, and December except as noted. The samples shall be analyzed for the following:

<u>Parameters &amp; Constituents</u>	<u>Units</u>	<u>Type of Sample</u>	<u>Frequency</u>
1. pH	Number	Grab	Quarterly
2. TDS	mg/l	Grab	Quarterly
3. Specific Conductance	micromohs/cm	Grab	Quarterly
4. Temperature	°C	Grab	Quarterly
5. COD	mg/l	Grab	Quarterly
6. Calcium	mg/l	Grab	Quarterly
7. Magnesium	mg/l	Grab	Quarterly
8. Sulphate	mg/l	Grab	Quarterly
9. Sodium	mg/l	Grab	Quarterly
10. Nitrate	mg/l	Grab	Quarterly

<u>Parameters &amp; Constituents</u>	<u>Units</u>	<u>Type of Sample</u>	<u>Frequency</u>
11. Ground Water Elevations (USGS Datum)	Feet	Meas.	Quarterly
12. Volatile Organics (EPA Methods 601, 602)	ug/l	Grab	Quarterly

The collection, preservation and holding times of all samples shall be in accordance with EPA-approved methods. All analyses shall be conducted by a laboratory certified by the State Department of Health Services to perform the required analyses.

REPORTING

1. Quarterly monitoring reports shall be submitted to the Regional Board by January 15, April 15, July 15, and October 15 of each year. The annual report required under Provision No. 13 of Board Order No. 89-010 shall be submitted by November 15 of each year.
2. The discharger shall arrange the data in tabular form so that the specified information is readily discernible. The data shall be summarized in such a manner as to clearly illustrate whether the waste management facility is operating in compliance with waste discharge requirements.

Submit monitoring reports to:

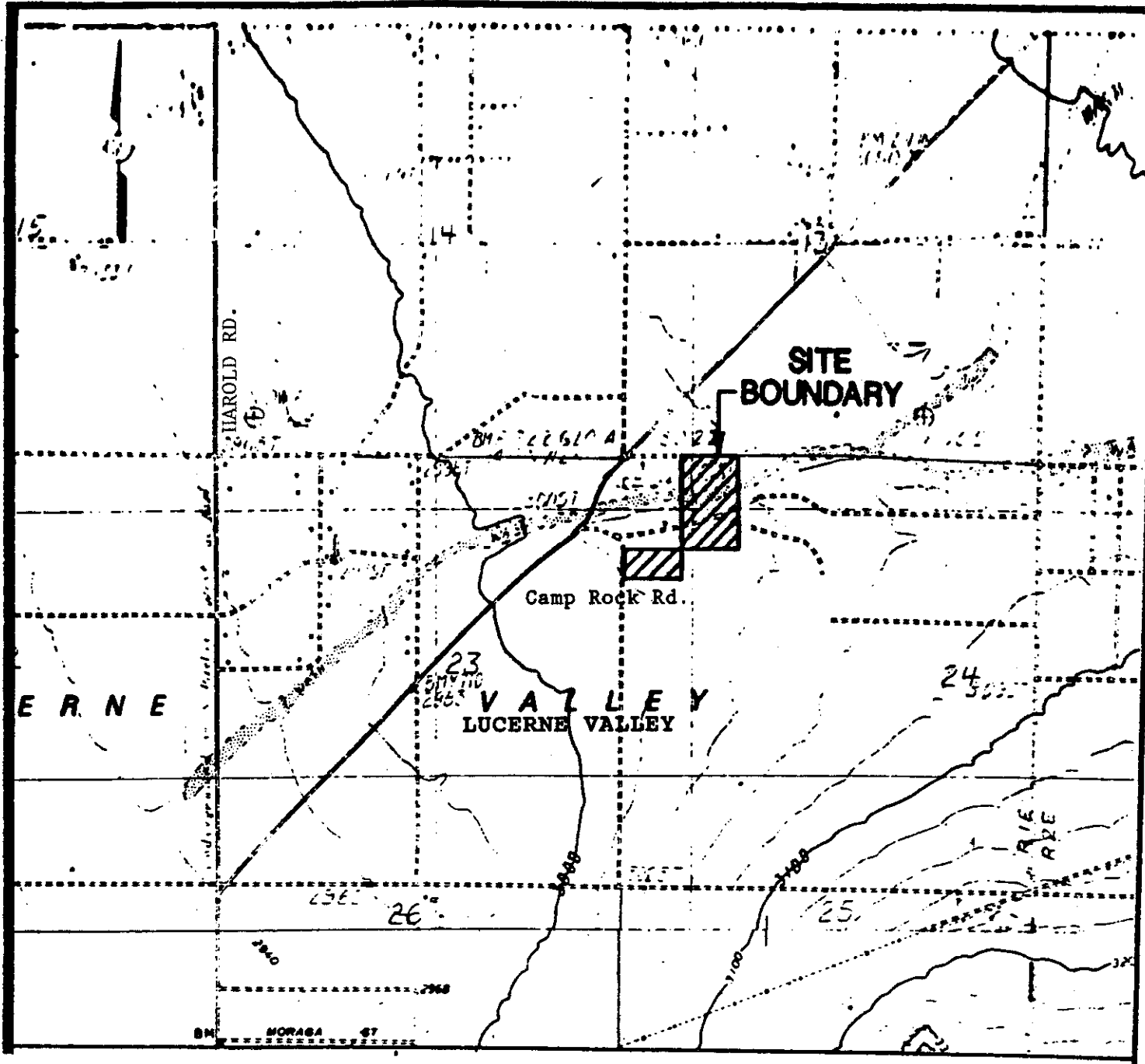
California Regional Water Quality Control Board  
Colorado River Basin Region  
73-271 Highway 111, Suite 21  
Palm Desert, CA 92260

ORDERED BY:

Philip A. Gruenberg  
Executive Officer

January 25, 1989

Date



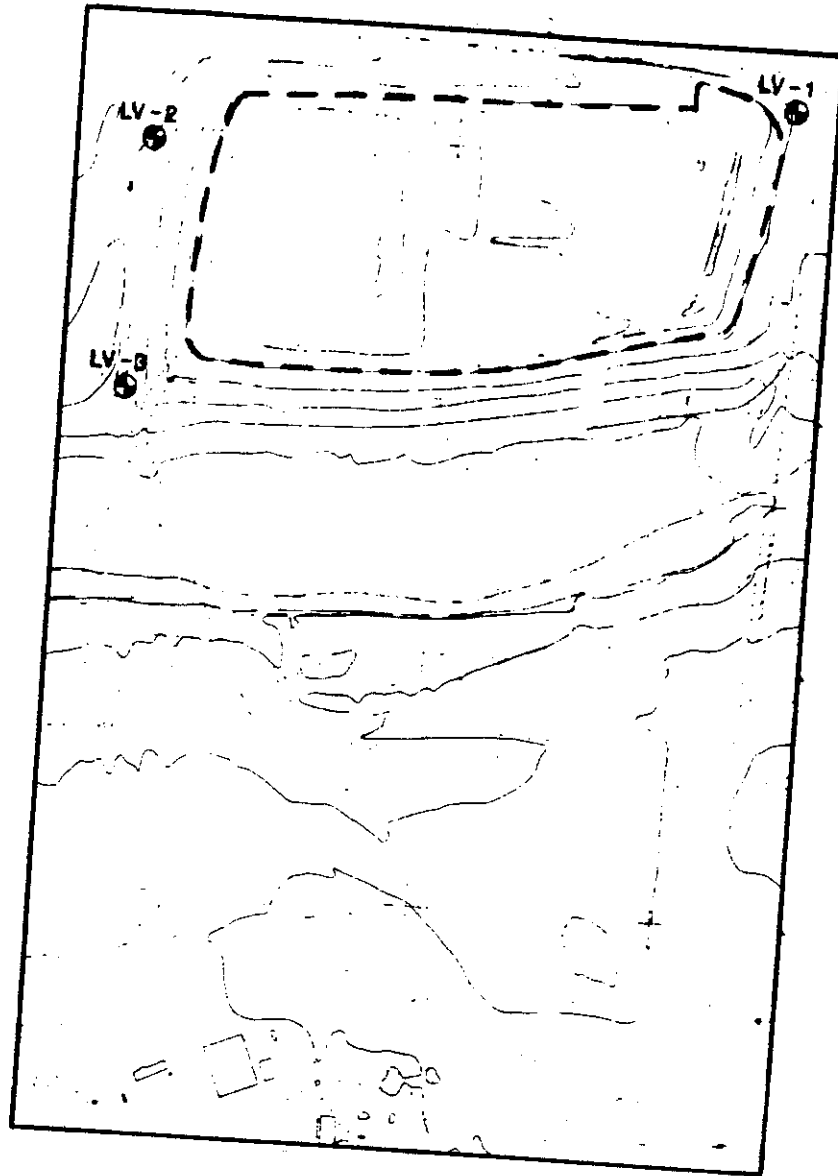
CONTOUR INTERVAL: 20 FEET

ATTACHMENT "A"

COUNTY OF SAN BERNARDINO  
LUCERNE VALLEY WASTE MANAGEMENT FACILITY  
Portion of NW $\frac{1}{4}$ , Section 24, T5N, R1E, SBB&M  
Grandview Mine, California Quadrangle Map (1982)

Order NO. 89-010

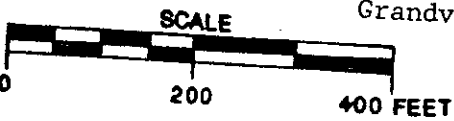




LEGEND  
LV-1  
⊕ MONITORING WELL LOCATION

ATTACHMENT "B"

COUNTY OF SAN BERNARDINO  
LUCERNE VALLEY WASTE MANAGEMENT FACILITY  
Portion of NW $\frac{1}{4}$ , Section 24, T5N, R1E, SBB&M  
Grandview Mine, California Quadrangle Map (1982)



Monitoring Well Locations