

CALIFORNIA REGIONAL WATER QUALITY CONTROL BOARD
COLORADO RIVER BASIN REGION

MONITORING AND REPORTING PROGRAM NO. 89-054 (REVISION NO. 1)
FOR
FOUNTAIN OF YOUTH SPA
Northeast of Salton Sea - Imperial County

Location of Discharge: E 1/2, Section 13, T9S, R12E, SBB&M

1. The collection, preservation and holding times of all samples shall be in accordance with U. S. Environmental Protection Agency approved procedures. All analyses shall be conducted by a laboratory certified by the State Department of Health Services to perform the required analyses.
2. If the facility is not in operation, or there is no discharge during a required reporting period, the discharger shall forward a letter to the Regional Board indicating that there has been no activity during the required reporting period.
3. The discharger shall submit the following information in an annual status report:
 - a. Estimate of maximum daily flow (gpd) of sewage discharged to system.
 - b. Number of mobile home and RV spaces and restrooms connected to the sewerage system.
 - c. List any proposed changes in the sewage disposal facilities during the coming year.
 - d. Explain any problems in the sewage treatment and disposal system during the preceding year.
 - e. Report the total dissolved solids concentrations of the water supply wells nearest to the facility.
4. One of the oxidation basins shall be sampled annually during November each year. The samples shall be analyzed for the following:

<u>Constituents</u>	<u>Unit</u>	<u>Type of Sample</u>	<u>Sampling Frequency</u>
Total Dissolved Solids	mg/L ¹	Grab	Annually
Volatile Organics	µg/L ²	Grab	Annually

¹ mg/L - milligrams-per-Liter

² µg/L - micrograms-per-Liter

*Replacing
89-054*

SUPERSEDED BY
BOARD ORDER NO. 87-2002-0158

11/13/02

<u>Constituents</u>	<u>Unit</u>	<u>Type of Sample</u>	<u>Sampling Frequency</u>
Nitrate as NO ₃ -N	mg/L	Grab	Annually
Total Nitrogen	mg/L	Grab	Annually
Hydrogen Ion	pH	Grab	Annually

REPORTING

1. The discharger shall arrange the data in tabular form so that the specified information is readily discernible. The data shall be summarized in such a manner as to clearly illustrate whether the facility is operating in compliance with waste discharge requirements.
2. Records of monitoring information shall include:
 - a. The date, exact place, and time of sampling or measurement(s);
 - b. The individual(s) who performed the sampling or measurement(s);
 - c. The date(s) analyses were performed;
 - d. The individual(s) who performed the analyses;
 - e. The analytical techniques or method used; and
 - f. The results of such analyses.
3. Each report shall contain the following statement:

"I declare under the penalty of law that I have personally examined and am familiar with the information submitted in this document, and that based on my inquiry of those individuals immediately responsible for obtaining the information, I believe that the information is true, accurate, and complete. I am aware that there are significant penalties for submitting false information, including the possibility of a fine and imprisonment for knowing violations."
4. A duly authorized representative of the discharger may sign the documents if:
 - a. The authorization is made in writing by the person described above;
 - b. The authorization specified an individual or person having responsibility for the overall operation of the regulated disposal system; and
 - c. The written authorization is submitted to the Regional Board's Executive Officer.
5. Report immediately any failure in the waste disposal system to the Regional Board's Executive Officer and the Director of the County Environmental Health Department by telephone with follow-up by letter.
6. Monitoring reports shall be certified under penalty of perjury to be true and correct, and shall contain the required information at the frequency designated in this monitoring report.
7. Annual monitoring reports shall be submitted to the Regional Board by January 15 of each year.

8. Submit monitoring reports to:

California Regional Water Quality Control Board
Colorado River Basin Region
73-720 Fred Waring, Suite 100
Palm Desert, CA 92260

Ordered by:

Philip A. Gruenberg
Executive Officer

8-27-97

Date

CALIFORNIA REGIONAL WATER QUALITY CONTROL BOARD
COLORADO RIVER BASIN REGION

ORDER NO. 89-054

WASTE DISCHARGE REQUIREMENTS
FOR
FOUNTAIN OF YOUTH SPA
Northeast of Salton Sea - Imperial County

The California Regional Water Quality Control Board, Colorado River Basin Region, finds that:

1. Fountain of Youth Spa, J. T. Trily, President (hereinafter referred to as the discharger), 2606 Caminito Tom Morris, La Jolla, California 92037, supplied the updated information on the discharge of waste on May 3, 1989.
2. The discharger is discharging a maximum of 0.27 million gallons per day of domestic wastewater from the mobile home park consisting of 700 mobile home spaces, 300 camper spaces, 7 swimming pools, 2 laundry rooms and 6 restrooms. The wastewater from this park is discharged into 3 earthen basins for disposal by infiltration and evaporation. The site is located in the E $\frac{1}{2}$, Section 13, T9S, R12E, SBB&M.
3. This discharge has been subject to waste discharge requirements adopted in Board Order No. 84-005.
4. The Water Quality Control Plan for the Colorado River Basin Region of California was adopted by the Regional Board on November 14, 1984.
5. There are no domestic wells within 500 feet of the discharge facilities described in Finding No. 2.
6. Shallow ground waters in the area are brackish and are not beneficially used.
7. The Board has notified the discharger and interested agencies and persons of its intent to update waste discharge requirements for the discharge.
8. The Board in a public meeting heard and considered all comments pertaining to the existing discharge.
9. In accordance with Section 15301, Chapter 3, Title 14, of the California Code of Regulations, the issuance of these waste discharge requirements, which govern the operation of an existing facility involving negligible or no expansion of use beyond that previously existing, is exempt from the provisions of the California Environmental Quality Act (Public Resources Code, Section 21000 et seq.).

Replaced
by
89-054T1

IT IS HEREBY ORDERED, the discharger shall comply with the following:

A. Discharge Specifications

1. Neither the treatment nor the discharge of wastewater shall create pollution or nuisance as defined in Division 7 of the California Water Code.
2. No wastewater other than domestic wastewater shall be discharged into the sewage disposal system described in Finding No. 2 (above).
3. A minimum freeboard of 2 feet shall be maintained in each basin.
4. Treated or untreated sludge or similar solid waste materials shall be disposed only at locations approved by the Regional Board.
5. Adequate measures shall be taken to assure that unauthorized persons effectively excluded from contact with the wastewater.
6. Adequate measures shall be taken to assure that flood or surface drainage waters do not erode or otherwise render portions of the discharge facilities inoperable.
7. There shall be no surface flow of wastewater away from the discharge facilities.
8. There shall be no discharge, bypass, or flow of treated or untreated wastewater to any drainage channel which drains to surface waters.
9. Disposal by ponding shall be conducted in such a manner that there shall be no stranded or exposed sewage solids.
10. Surface aerobic environment shall be maintained for each basin.
11. Infiltration facilities (basins) shall be maintained and operated so as to maximize infiltration and minimize the increase in salinity of the infiltrating wastewater by evaporation.
12. Standby facilities shall be provided in the event of pump and/or commercial power failure.

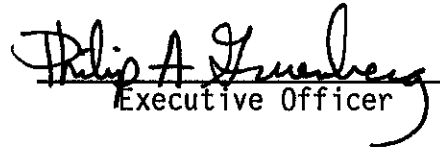
B. Provisions

1. The discharger shall comply with "Monitoring and Reporting Program No. 89-054", and future revisions thereto, as specified by the Executive Officer.
2. Prior to any modifications in this facility which would result in material change in the quality or quantity of wastewater discharged, or any material change in location of discharge, the discharger shall report in writing to the Regional Board.

3. In the event of any change in operation, or in control or ownership of land or waste disposal facilities owned or controlled by the discharger, the discharger shall:
 - a. Notify this Board of such change; and
 - b. Transmit a copy of this Order to the succeeding owner or operator, and file a copy of the transmittal letter with this Board.

IT IS FURTHER ORDERED THAT: Board Order No. 84-005 be superseded by this Order.

I, Phil Gruenberg, Executive Officer, do hereby certify the foregoing is a full, true and correct copy of an Order adopted by the California Regional Water Quality Control Board, Colorado River Basin Region, on June 28, 1989.


Executive Officer

CALIFORNIA REGIONAL WATER QUALITY CONTROL BOARD
COLORADO RIVER BASIN REGION

MONITORING AND REPORTING PROGRAM NO. 89-054
FOR
FOUNTAIN OF YOUTH SPA
Northeast of Salton Sea - Imperial County

Location of Discharge: E $\frac{1}{2}$, Section 13, T9S, R12E, SBB&M

MONITORING

The discharger shall submit an annual status report on the following:

1. Estimate of maximum daily flow (gpd) of sewage discharged to basin(s).
2. Number of mobile home and camper spaces and restrooms presently connected to the sewerage system.
3. List any proposed changes in the sewage disposal facilities during the upcoming year.

REPORTING

1. Annual reports shall be submitted to the Regional Board by January 15th of each year to:

California Regional Water Quality Control Board
Colorado River Basin Region
73-271 Highway 111, Suite 21
Palm Desert, CA 92260

2. Immediately report to this office by telephone and follow-up by letter any failures of the sewerage system.

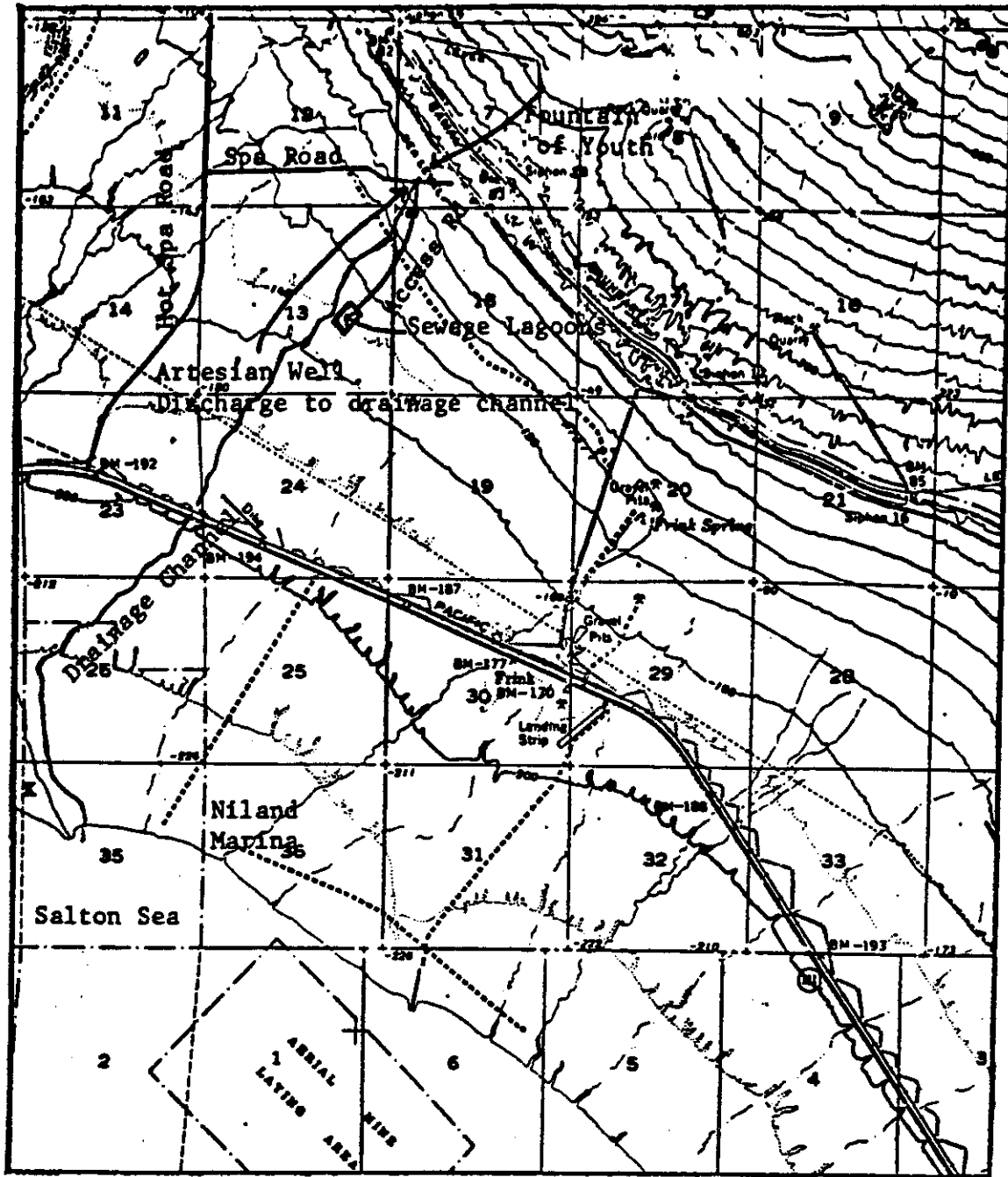
ORDERED BY:

Philip A. Greenberg
Executive Officer

June 28, 1989

Date

CALIFORNIA REGIONAL WATER QUALITY CONTROL BOARD - 7



SITE MAP
FOUNTAIN OF YOUTH SPA
Northeast of Salton Sea - Imperial County
E $\frac{1}{2}$, Section 13, T9S, R12E, SBB&M
USGS 15 min. Frink Area Topographic Map