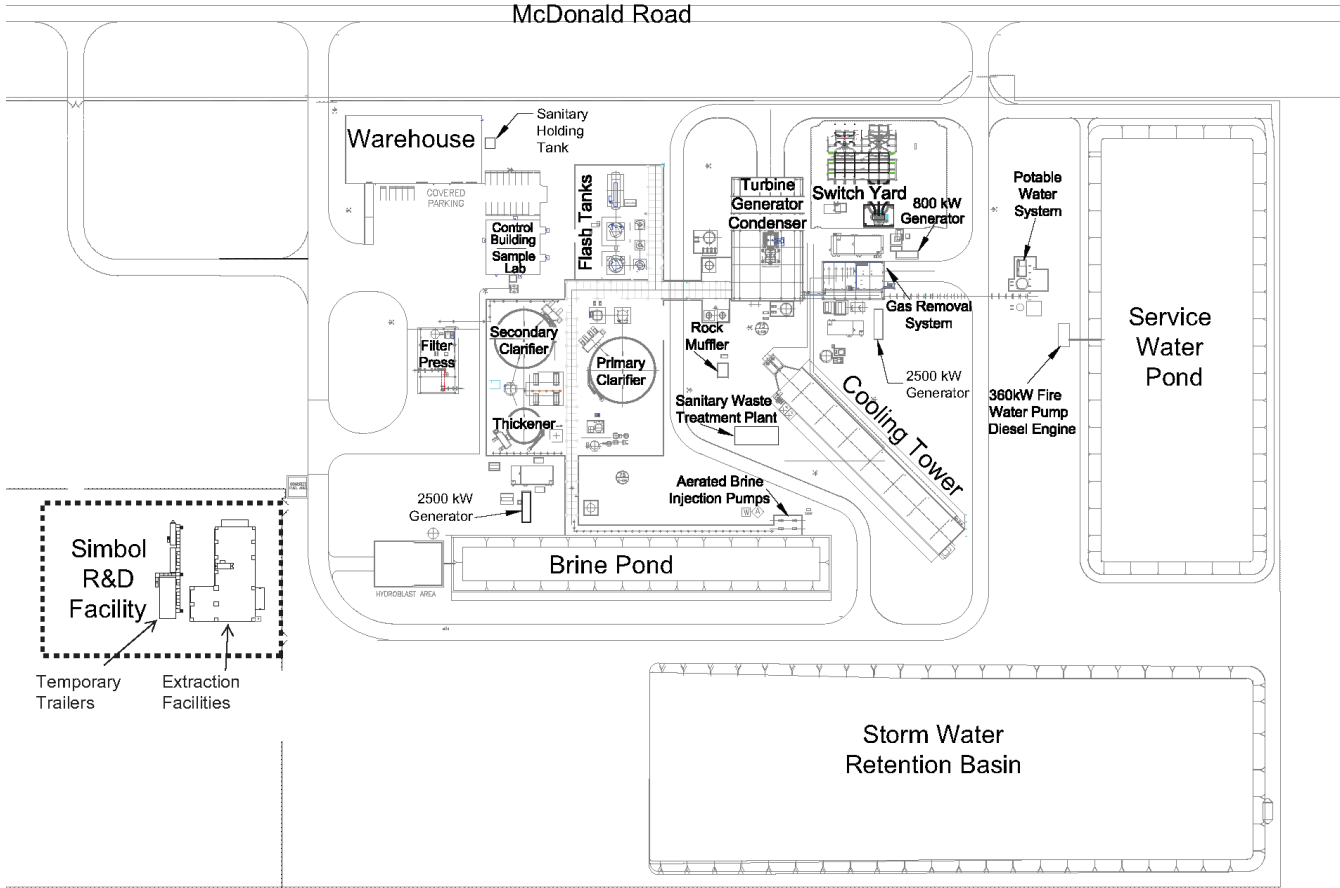


**CALIFORNIA REGIONAL WATER QUALITY CONTROL BOARD  
COLORADO RIVER BASIN REGION**



**ATTACHMENT B**

**SITE PLAN**

**HUDSON RANCH I, LLC, OWNER/OPERATOR  
JOHN L. FEATHERSTONE GEOTHERMAL POWER PLANT  
BRINE POND**

**Salton Sea Known Geothermal Resource Area (KGRA) - Imperial County**

**Order R7-2013-0059**

**CALIFORNIA REGIONAL WATER QUALITY CONTROL BOARD  
COLORADO RIVER BASIN REGION**



**ATTACHMENT A**

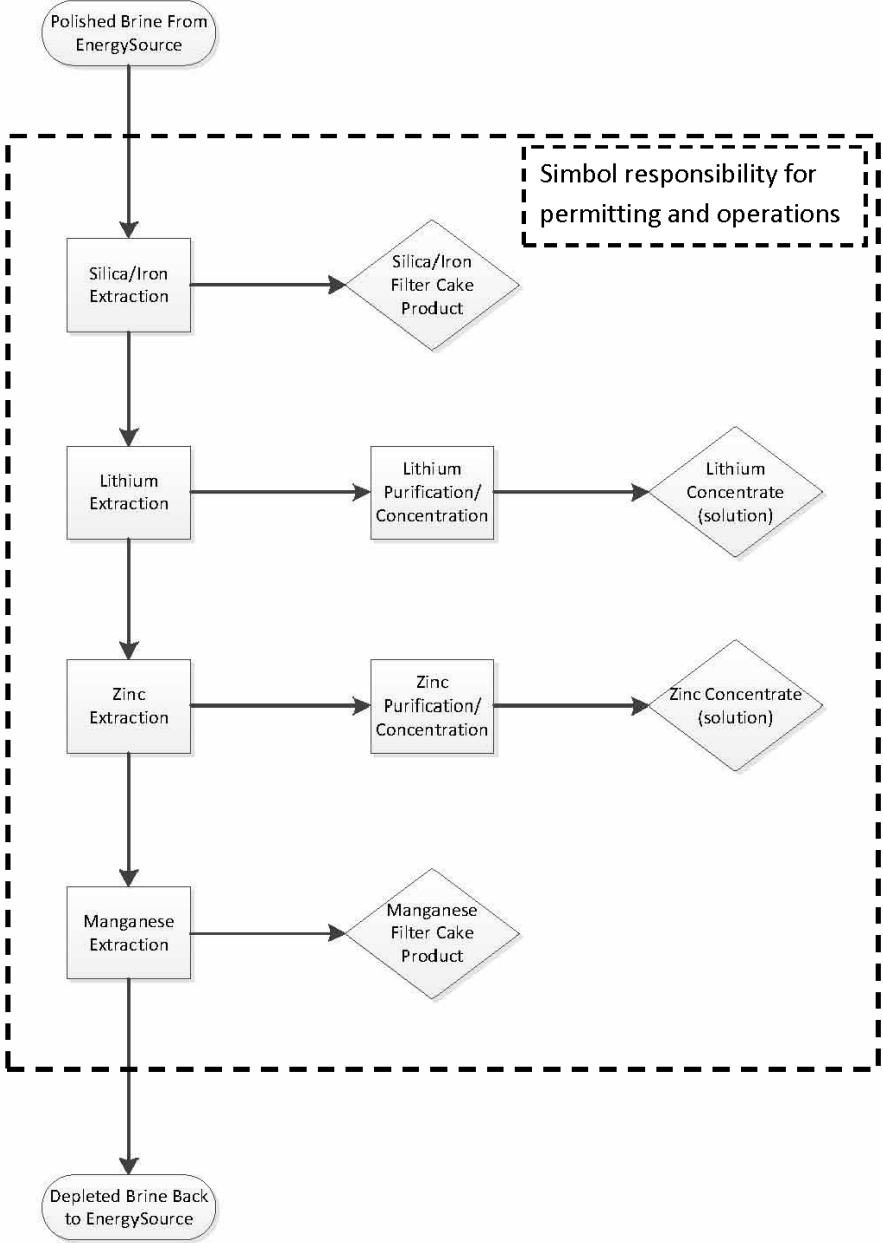
**SITE LOCATION MAP**

**HUDSON RANCH I, LLC, OWNER/OPERATOR  
JOHN L. FEATHERSTONE GEOTHERMAL POWER PLANT  
BRINE POND**

**Salton Sea Known Geothermal Resource Area (KGRA) - Imperial County**

**Order R7-2013-0059**

**CALIFORNIA REGIONAL WATER QUALITY CONTROL BOARD  
COLORADO RIVER BASIN REGION**



**ATTACHMENT C**

**SIMBOL PROCESS FLOW DIAGRAM**

**SIMBOL, INC. OWNER/OPERATOR AT THE  
JOHN L. FEATHERSTONE GEOTHERMAL POWER PLANT**

**Salton Sea Known Geothermal Resource Area (KGRA) - Imperial County**

**Order R7-2013-0059**