

# SWRCB Public Workshop 2021 Sacramento River Temperature Management

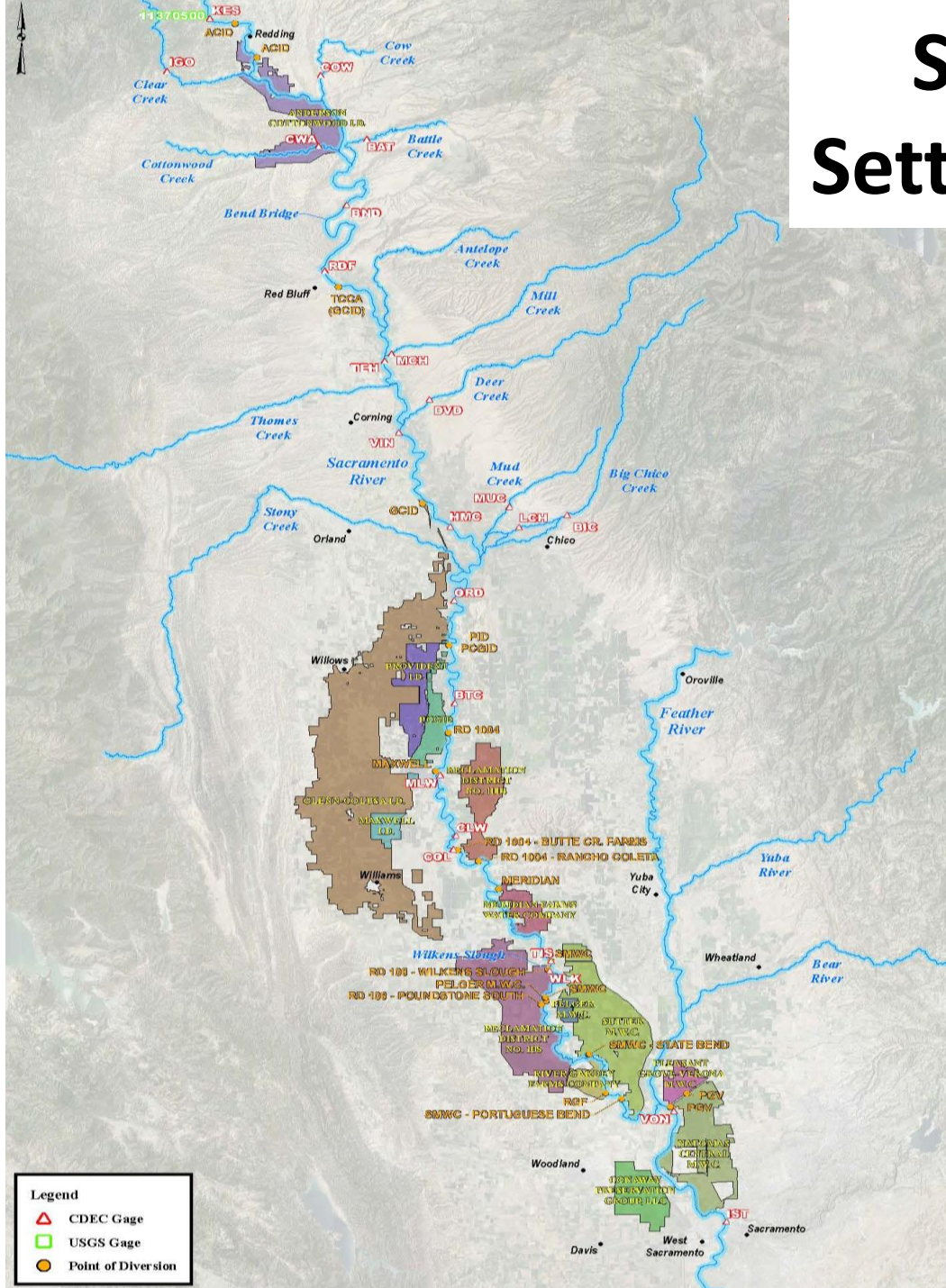
Sacramento River Settlement Contractors

April 21, 2021

# Overview

- Who we are and our history
- SRSC Salmon Recovery Program
  - Activities since 2014-15
  - Floodplain Forward Working Group
  - Federal and State opportunities
- 2021 planning
- Use of models
- Looking forward

# Sacramento River Settlement Contractors

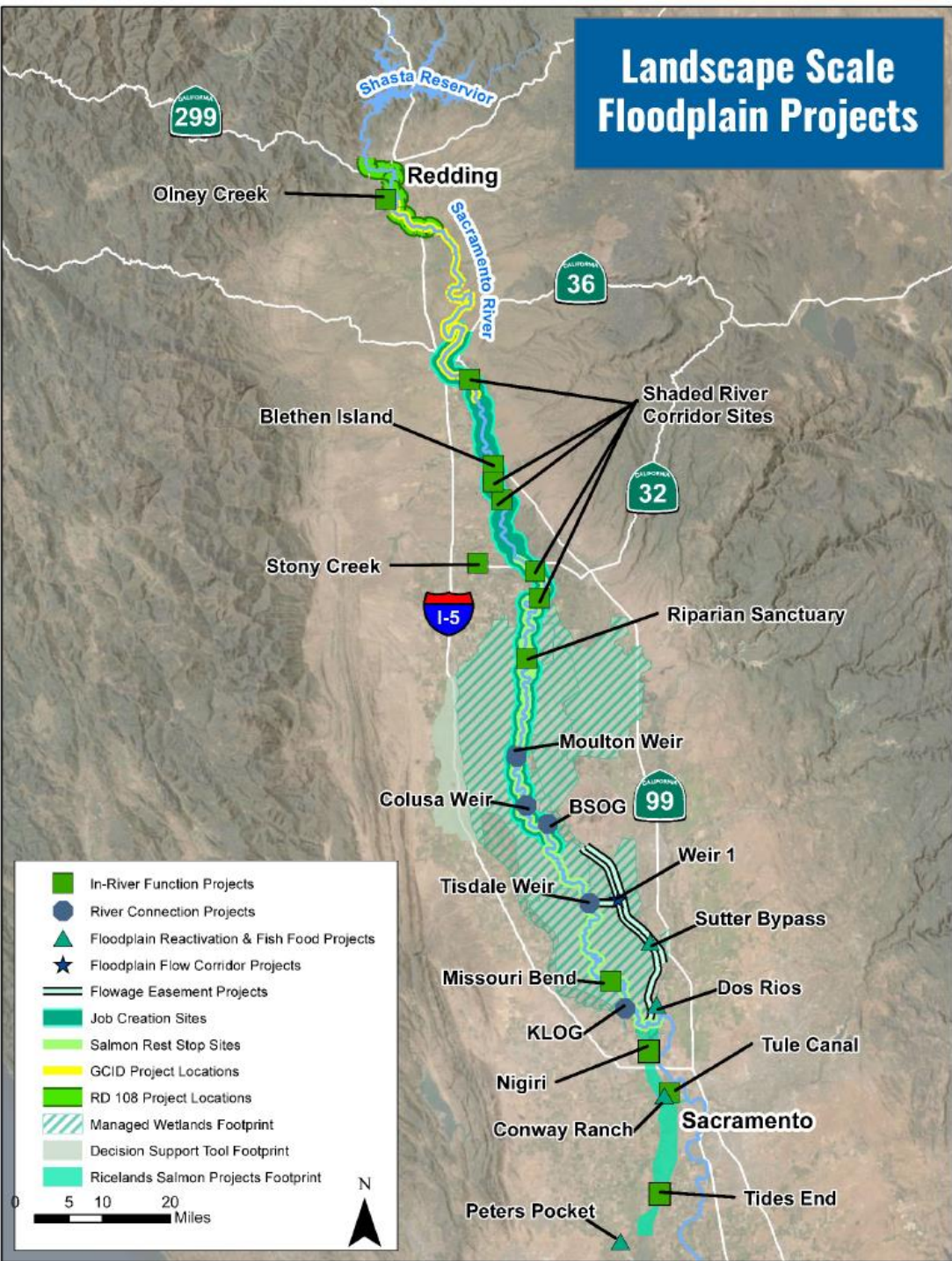


- Historical water rights
- Extensively studied and documented
- SWRCB D-990 conditioned USBR rights
- CVP Based on SRSC water rights
- Contract quantities are less than value of underlying water rights
- Collaborative, Solution oriented
- Not the shock absorber

# Salmon Recovery Program

- Temperature Actions
- Improve Temperature Forecasting Tools
- Commitment to Meet and Confer Process
- Launched Sacramento River Science Partnership
- Restoration Projects
  - Improve Spawning Success through Gravel Quality and Quantity Improvements
  - Improve Survival of Emerged Salmon
  - Limit Adult Straying
  - Floodplain Habitat
  - Fish Food
- Priority permitting commitment from federal/state agencies

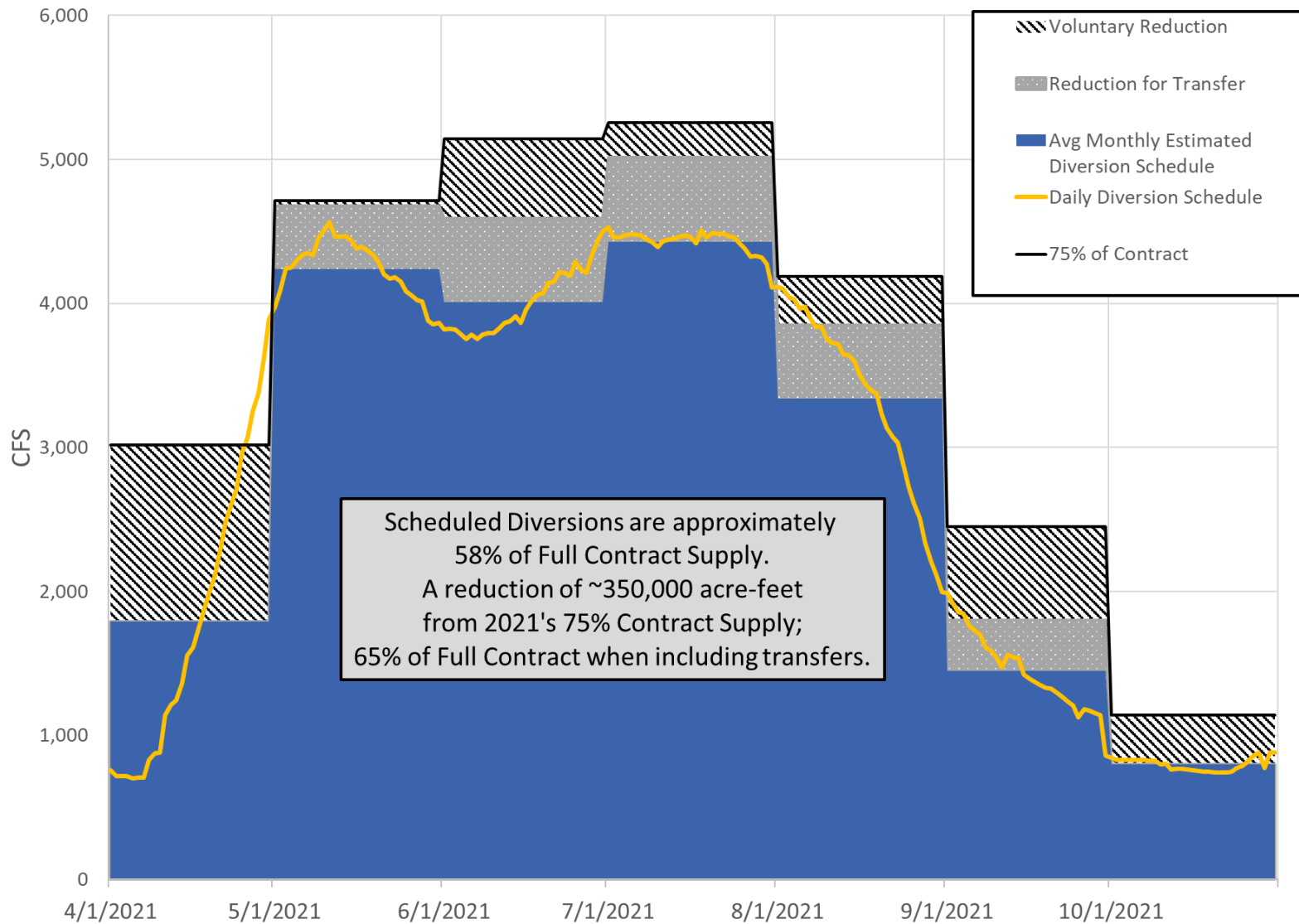
# Landscape Scale Floodplain Projects



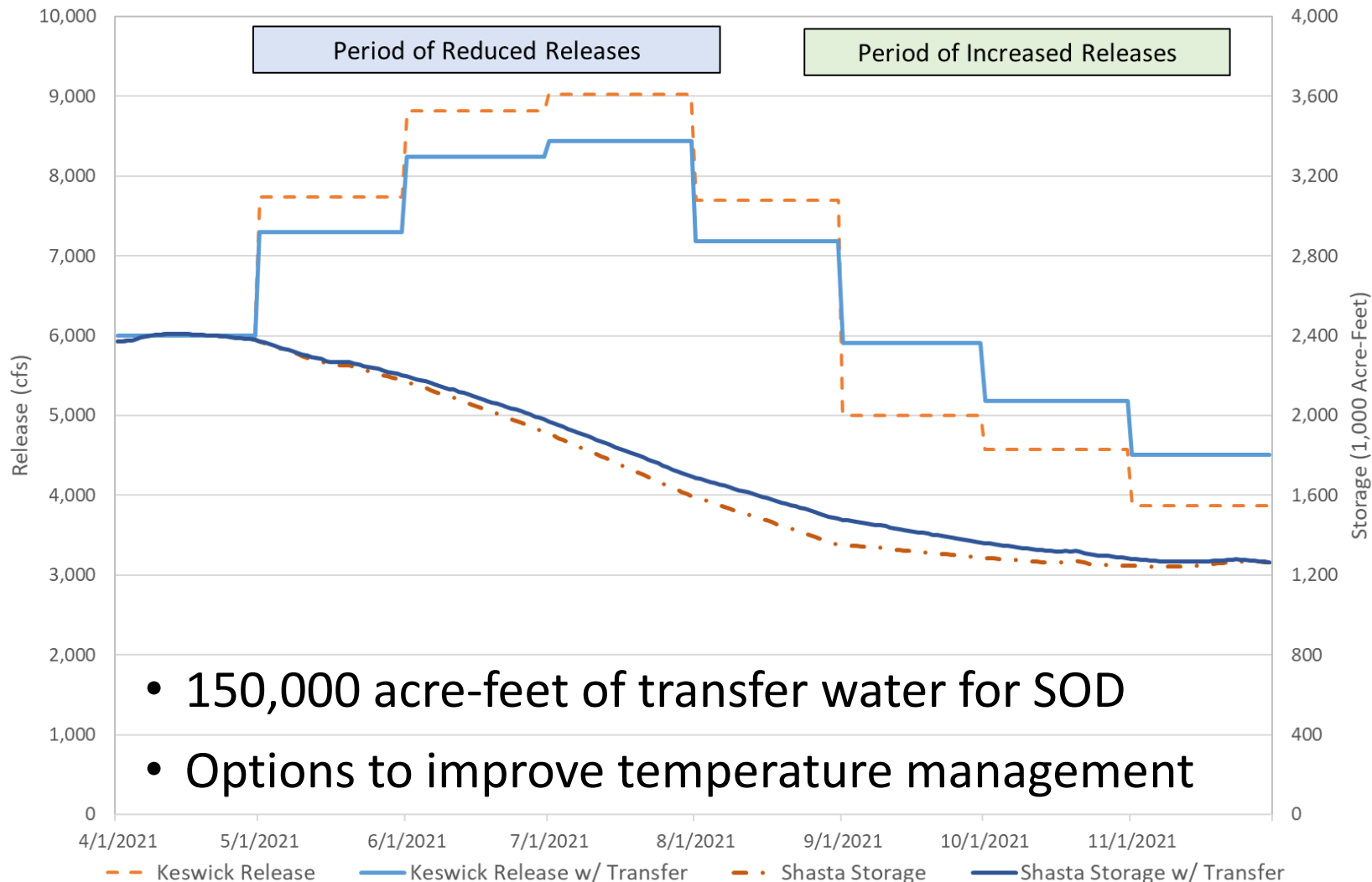
# 2021 Planning

- Fall 2020 – SRTTG Coordination
  - Shifted 45,000 af into November to smooth Sac River flows
  - Maintained wildlife refuge delivery
  - SRSC agencies left some fall supply undiverted
- Action/Decision timeline
  - Daily/Weekly meetings of SRSC and other agencies since March
  - Multi-page action plan
- Weekly diversion scheduling and coordination among SRSC and other Sac River diverters
- Water transfers
- Modeling support
- Meet & Confer process

# 2021 Estimated Diversions

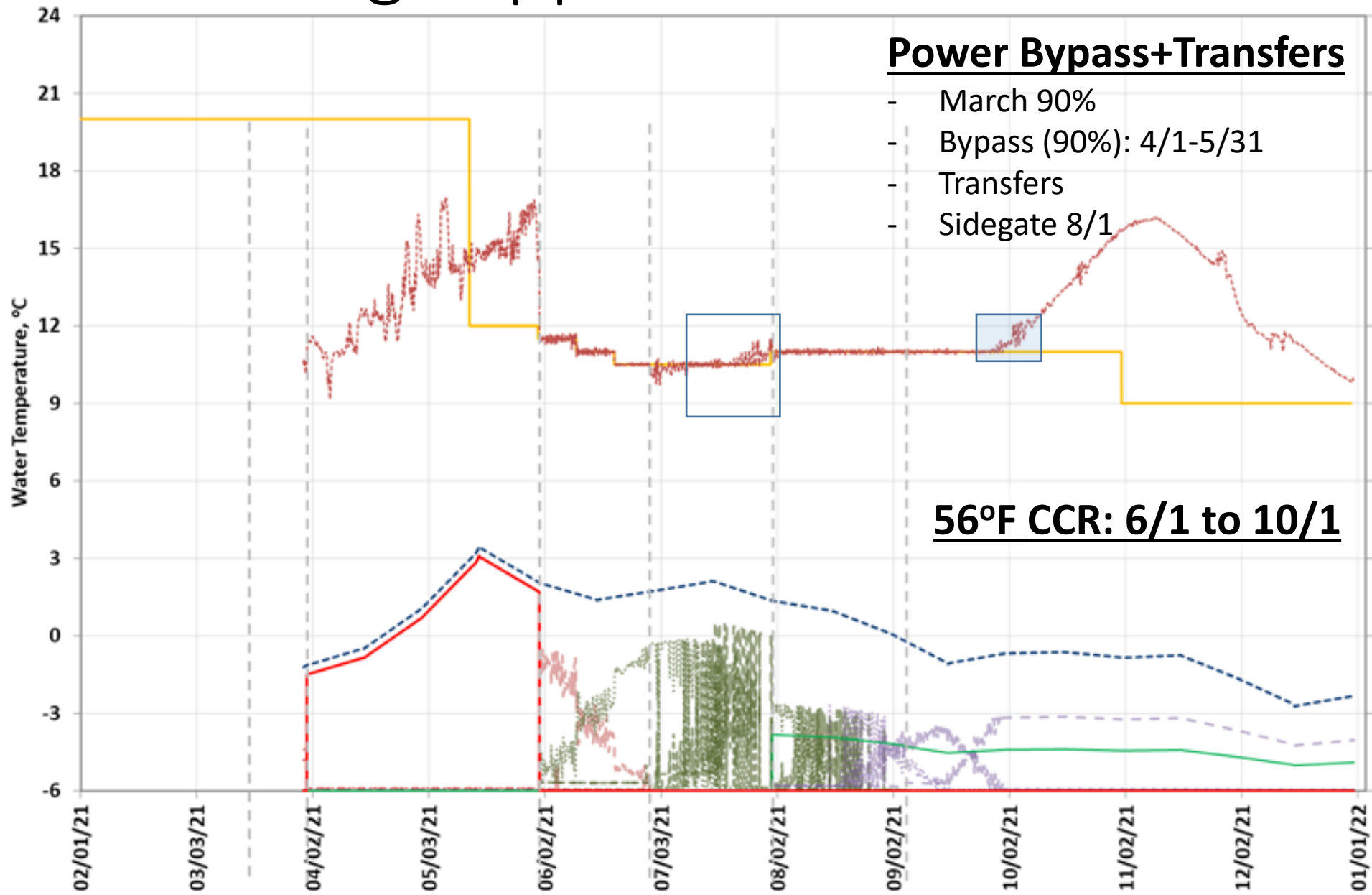


# 2021 Water Transfers





# Modeling Support



# Appropriate Use of Models\*

- Models used in public decision-making should be available for public scrutiny, like any other calculation or analysis presented in a public forum
- Computer models should be readily available to all users for independent evaluation prior to formal use in public decision-making
- Models developed in a transparent, open, and collaborative environment with stakeholders, will establish the long-term vision of model development to most efficiently and best serve the needs of the project

\*Bay Delta Modeling Forum. 2000. Protocols for Water and Environmental Modeling. (<https://www.cwemf.org/Pubs/Protocols2000-01.pdf>)  
California Water and Environmental Modeling Forum. 2021. Protocols for Water and Environmental Modeling. Draft (April)

# Modeling Process\*

- Preliminary analyses
  - Objective
  - Model Selection (governing equations, solution)
- Framing the modeling study
  - Project domain, spatial and temporal scales
  - Model performance (calibration/validation, sensitivity)
- Model application
  - Application and post-audit
- Communication and documentation
  - Presentation of results
  - Documentation
  - Peer review

# Looking Forward

- Operations
  - Updating: Forecast + Data + Models = Plan
  - Implementing: 2021 Monitoring & Framework
  - Participating: Meet and Confer Group
  - Consulting: SRTTG
- Sac Science Partnership
  - Implementing: Science Plan
    - Science Activities
  - Collaborating: Modeling Framework and Sharing of Tools
  - Developing: Monitoring and field studies
- Restoration
  - Implementing: Partnerships are Active
  - Securing: Local, State, and Federal Funding
  - Consulting: Green Tape Permitting