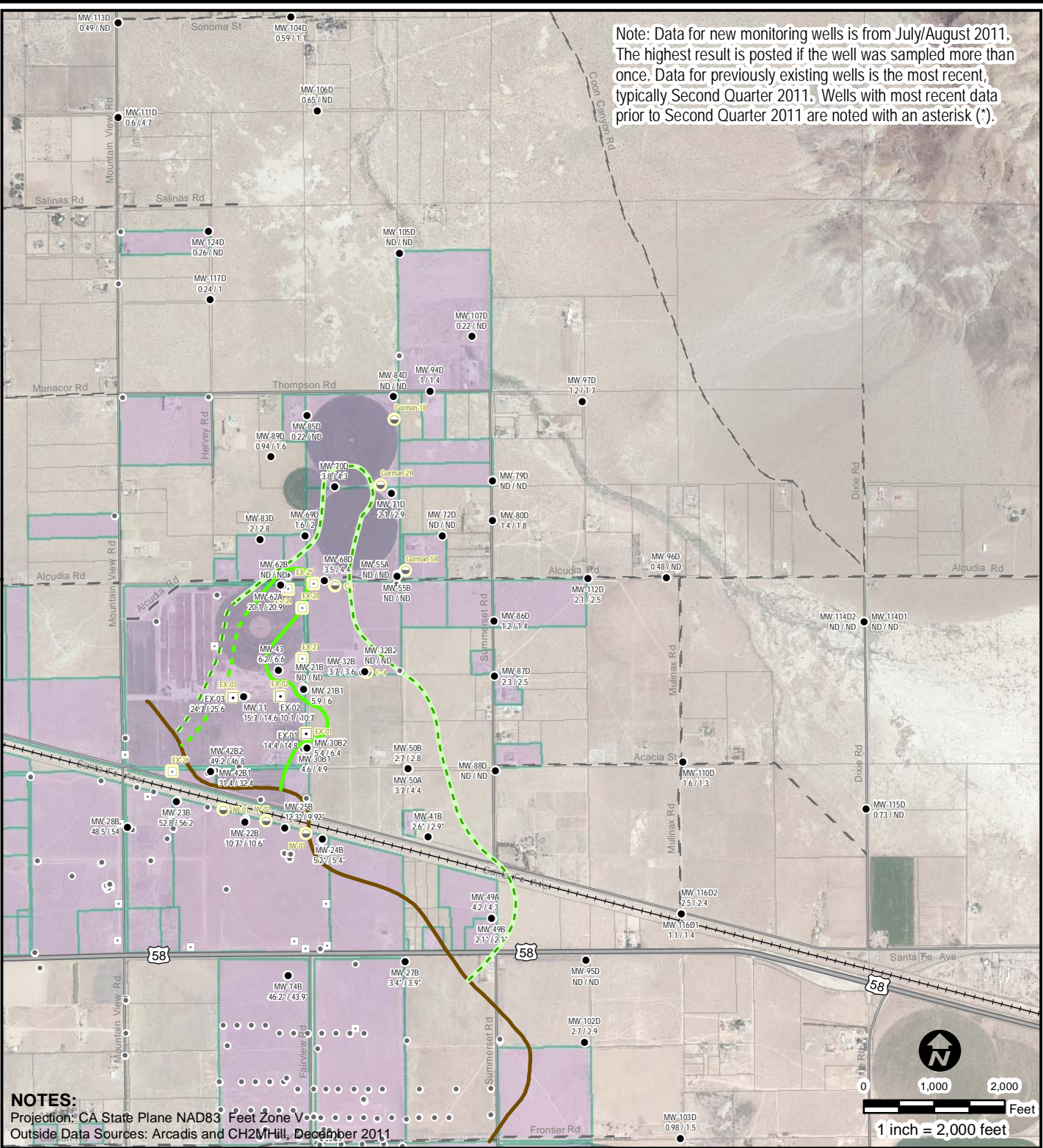


Note: Data for new monitoring wells is from July/August 2011. The highest result is posted if the well was sampled more than once. Data for previously existing wells is the most recent, typically Second Quarter 2011. Wells with most recent data prior to Second Quarter 2011 are noted with an asterisk (*).



NOTES:
 Projection: CA State Plane NAD83 Feet Zone V
 Outside Data Sources: Arcadis and CH2M Hill, December 2011



Wells by Well Type

- Groundwater Monitoring Well
- Groundwater Extraction Well For DVD Operations
- Groundwater Extraction Well For Agricultural Unit (AU) Operations
- ~ Estimated Limit of Upper Aquifer Confining Unit (UACCL) "Brown Clay"
- PGE Property Boundaries
- ~ A2 Chromium Plume (August 2011) Concentration of Hexavalent Chromium (ug/l)
 - 10 ug/l
 - 3.1 ug/l

<p>57 LAFAYETTE CIRCLE, 2ND FLOOR LAFAYETTE, CALIFORNIA PHONE: (925) 299-9300 FAX: (925) 299-9302</p>	FOR: Pacific Gas & Electric Groundwater Remediation Project Hinkley, California		CHROMIUM IN GROUNDWATER OF THE UPPER AQUIFER DEEP ZONE (A2)		FIGURE: 19
	JOB NUMBER: 185702424	DRAWN BY: TF	CHECKED BY: BD	APPROVED BY: CM	DATE: 09/01/11