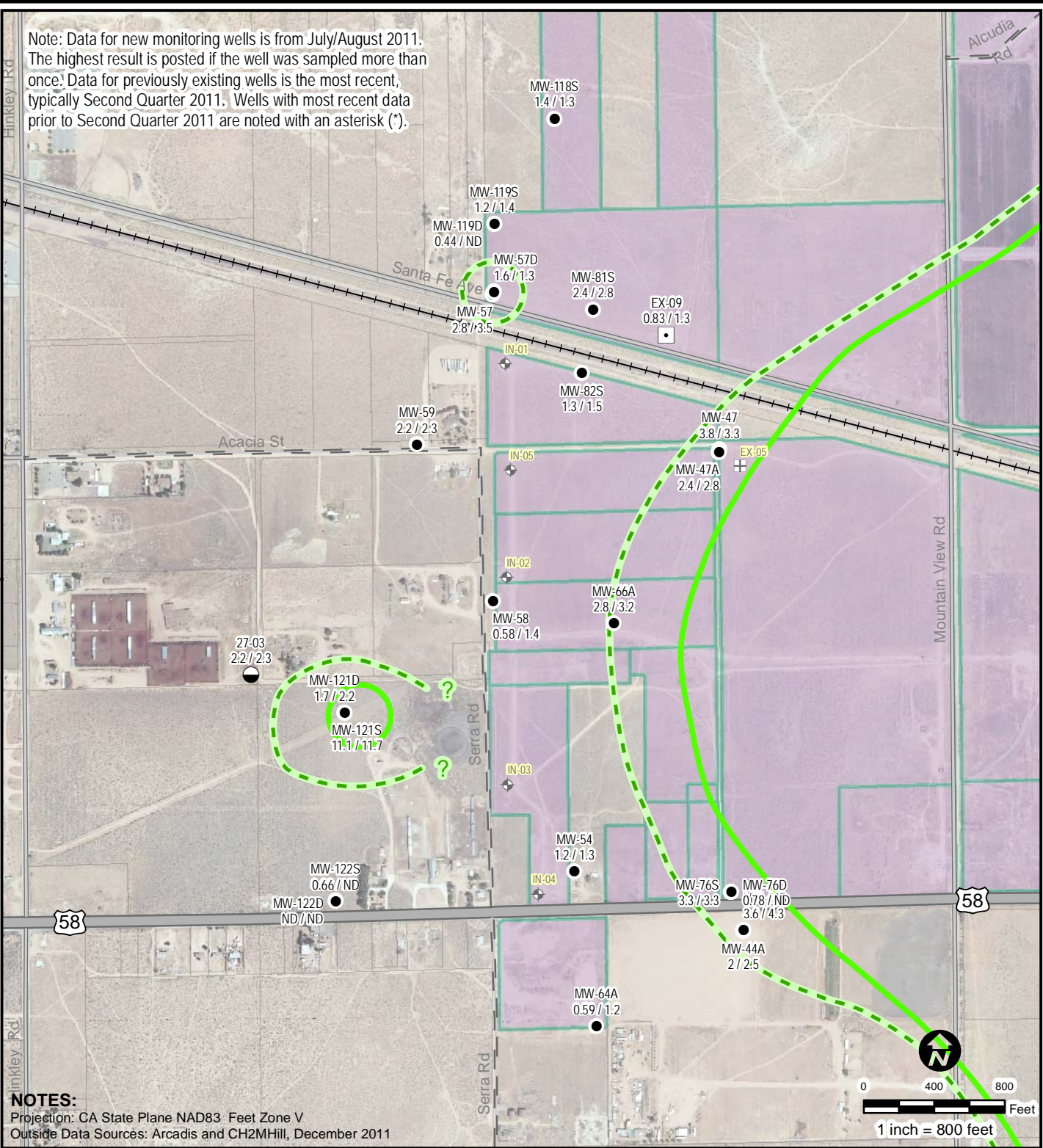


Z:\PG&E\EMXD_Files\Sept 2011\Figure 20 (Cr in GW NW max) (2011-9-7)\8x11.mxd

Note: Data for new monitoring wells is from July/August 2011. The highest result is posted if the well was sampled more than once. Data for previously existing wells is the most recent, typically Second Quarter 2011. Wells with most recent data prior to Second Quarter 2011 are noted with an asterisk (*).



NOTES:
 Projection: CA State Plane NAD83 Feet Zone V
 Outside Data Sources: Arcadis and CH2MHill, December 2011

Wells by Well Type

- Groundwater Monitoring Well
- ◐ Groundwater Extraction Well For Agricultural Unit (AU) Operations
- ◑ Groundwater Extraction Well For DVD Operations
- ⊕ Freshwater Injection Well

■ PGE Property Boundaries

A1 Chromium Plume (August 2011)
 Concentration of Hexavalent Chromium (ug/l)
 10 ug/l
 3.1 ug/l

Stantec
 57 LAFAYETTE CIRCLE, 2ND FLOOR
 LAFAYETTE, CALIFORNIA
 PHONE: (925) 299-9300 FAX: (925) 299-9302

FOR:
**Pacific Gas & Electric
 Groundwater Remediation Project
 Hinkley, California**

JOB NUMBER: 185702424
 DRAWN BY: TF

**CHROMIUM IN GROUNDWATER OF
 THE UPPER AQUIFER TO THE
 NORTHWEST OF THE CHROMIUM
 PLUME - (LEFT PANEL)**

CHECKED BY: BD
 APPROVED BY: CM

FIGURE:
20

DATE: 09/01/11