



EDMUND G. BROWN JR.
GOVERNOR



MATTHEW RODRIGUEZ
SECRETARY FOR
ENVIRONMENTAL PROTECTION

Los Angeles Regional Water Quality Control Board

August 23, 2017

Mr. Howard Schwimmer
Rexford Industrial Realty, Inc.
11620 Wilshire Boulevard, Suite 1000
Los Angeles, California 90025

Certified Mail
Return Receipt Required
Claim No. 7016 0750 0000 3359 6028

REVISED MONITORING AND REPORTING PROGRAM NO. CI-10209 – FORMER AEROL COMPANY, 3235 NORTH SAN FERNANDO ROAD, LOS ANGELES, CALIFORNIA (FILE NO. 15-160, ORDER NO. R4-2014-0187, SERIES NO. 057, CI-10209, GLOBAL ID. WDR100026615)

Dear Mr. Schwimmer,

On May 12, 2016, the California Regional Water Quality Control Board, Los Angeles Region (Regional Board) enrolled Rexford Industrial Realty, Inc. (Discharger) under General Waste Discharge Requirements (WDR Order No. R4-2014-0187) with a Monitoring and Reporting Program (MRP) No. CI-10209 for injection of potassium permanganate for groundwater remediation of volatile organic compounds (VOCs) at the subject site.

The injection activities were conducted in November 2016. However, the post-remediation groundwater monitoring results indicated that the elevated VOCs concentrations were detected in the upgradient monitoring well MW-6. Therefore, the Discharger submitted the *Revised Remedial Action Plan* (Revised RAP) dated June 14, 2017 to propose expansion of the treatment area with additional injection points in the vicinity of monitoring well MW-6.

On June 26, 2017, Regional Board Site Cleanup Unit staff approved the Revised RAP. It is estimated that 356,400 gallons of 5% potassium permanganate solution will be injected into 11 injection points (IW-1 through IW-11) at depths from approximately 20 to 45 feet below ground surface. The injection activities are expected to take approximately one month.

The proposed discharge shall not cause the mineral constituents of the receiving groundwater at the compliance point, downgradient outside the application area, in excess of applicable limits (Narrows Area of the San Fernando Valley Groundwater Basin) given in Attachment B of General WDRs Order No. R4-2014-0187. The groundwater quality objectives are 900 milligrams per liter (mg/L) for total dissolved solids, 300 mg/L for sulfate, 150 mg/L for chloride, and 1.5 mg/L for boron.

IRMA MUÑOZ, CHAIR | SAMUEL UNGER, EXECUTIVE OFFICER

320 West 4th St., Suite 200, Los Angeles, CA 90013 | www.waterboards.ca.gov/losangeles

♻️ RECYCLED PAPER

The revised MRP, which incorporates additional injection points, is enclosed. The Discharger shall comply with the Electronic Submittal of Information (ESI) requirements by submitting all reports required under the revised MRP, including groundwater monitoring data, discharge location data, and pdf monitoring reports to the State Water Resources Control Board GeoTracker database under Global ID WDR100026615. Please do not combine other reports with your monitoring reports. Submit each type of report as a separate document.

For all parties who upload electronic documents to State Database GeoTracker, it is no longer necessary to email a copy of these documents to losangeles@waterboards.ca.gov or submit hard copies to our office. The Regional Board will no longer accept documents (submitted by either hard copy or email) already uploaded to GeoTracker. Please see Electronic Submittal to the Los Angeles Regional Board for GeoTracker Users dated December 12, 2011 at: <http://www.waterboards.ca.gov/losangeles/resources/Paperless/Paperless%20Office%20for%20GT%20Users.pdf>

To avoid paying future annual fees, please submit a written request for termination of your enrollment under the general WDR in a separate letter when the project is completed and the WDR is no longer needed. Be aware that the annual fee covers the fiscal year billing period beginning July 1 and ending June 30, the following year. You will pay the full annual fee if your request for termination is made after the beginning of the new fiscal year beginning July 1.

If you have any questions, please contact the Project Manager, Dr. Ann Chang at (213) 620-6122 (ann.chang@waterboards.ca.gov), or the Chief of Groundwater Permitting Unit, Dr. Eric Wu at (213) 576-6683 (eric.wu@waterboards.ca.gov).

Sincerely,


Samuel Unger, P.E.
Executive Officer

Enclosure: Revised Monitoring and Reporting Program No. CI-10209 dated August 23, 2017

cc: Mr. Mark S. Leymaster, Leymaster Environmental Consulting, LLC

STATE OF CALIFORNIA
CALIFORNIA REGIONAL WATER QUALITY CONTROL BOARD
LOS ANGELES REGION

REVISED MONITORING AND REPORTING PROGRAM NO. CI-10209
FOR
FORMER AEROL COMPANY
3235 NORTH SAN FERNANDO ROAD, LOS ANGELES, CALIFORNIA

ENROLLMENT UNDER REGIONAL BOARD
ORDER NO. R4-2014-0187 (SERIES NO. 057)
FILE NO. 15-160

I. MONITORING AND REPORTING REQUIREMENTS

- A. Rexford Industrial Realty, Inc. (hereinafter Discharger) shall implement this Monitoring and Reporting Program (MRP) on the effective date (August 23, 2017) under Regional Board Order No. R4-2014-0187. The next monitoring report shall be received at the Regional Board by **October 30, 2017**. Subsequent monitoring reports shall be received at the Regional Board according to the following schedule:

<u>Monitoring Period</u>	<u>Report Due</u>
January – March	April 30
April – June	July 30
July – September	October 30
October – December	January 30

- B. If there is no discharge or injection, during any reporting period, the report shall so state. By March 1 of each year, the Discharger shall submit an annual summary report to the Regional Board. The report shall contain both tabular and graphical summaries of the monitoring data obtained during the previous calendar year. In addition, the Discharger shall discuss the compliance record and the corrective actions taken or planned, which may be needed to bring the discharge into full compliance with the waste discharge requirements.
- C. The Discharger shall comply with requirements contained in Section G of Regional Board Order No. R4-2014-0187 "*Monitoring and Reporting Requirements*".

II. DISCHARGE MONITORING PROGRAM

The monitoring reports shall contain the following information regarding the injection activities:

1. Location map showing injection points used for potassium permanganate.
2. Written and tabular summary defining depth of injection points, quantity and concentration of potassium permanganate injected at each injection point, and total amount of potassium permanganate injected at the Site.
3. Visual inspection at each injection point shall be conducted and recorded during the injection.

III. GROUNDWATER MONITORING PROGRAM

A groundwater monitoring program shall be implemented to evaluate impacts associated with the injection activity. Groundwater samples shall be collected from monitoring wells MW-2, MW-3, MW-5, MW-7 and MW-8 (Figure 1). The Discharger shall conduct a baseline sampling prior to the proposed injection, followed by a monitoring frequency specified in the schedule below from all five monitoring wells for the following groundwater parameters:

CONSTITUENT	UNITS	TYPE OF SAMPLE	MINIMUM FREQUENCY OF ANALYSIS
Dissolved Oxygen	mg/L	grab	Baseline and quarterly after injection
Oxidation-Reduction Potential	millivolts	grab	Baseline and quarterly after injection
pH	pH units	grab	Baseline and quarterly after injection
Specific Conductivity	mS/cm	grab	Baseline and quarterly after injection
Temperature	°C	grab	Baseline and quarterly after injection
Turbidity	NTU	grab	Baseline and quarterly after injection
Total Organic Carbon	mg/L	grab	Baseline and quarterly after injection

CONSTITUENT	UNITS	TYPE OF SAMPLE	MINIMUM FREQUENCY OF ANALYSIS
Total Dissolved Solids	mg/L	grab	Baseline and quarterly after injection
Sulfate	mg/L	grab	Baseline and quarterly after injection
Chloride	mg/L	grab	Baseline and quarterly after injection
Boron	mg/L	grab	Baseline and quarterly after injection
Nitrate and Nitrite	mg/L	grab	Baseline and quarterly after injection
Volatile Organic Compounds	µg/L	grab	Baseline and quarterly after injection
Manganese	mg/L	grab	Baseline and quarterly after injection

All groundwater monitoring reports must include, at a minimum, the following:

- a. Well identification, date and time of sampling;
- b. Sampler identification, and laboratory identification;
- c. Observation of groundwater levels, recorded to 0.01 feet mean sea level and groundwater flow direction.

IV. MONITORING FREQUENCIES

Specifications in this monitoring program are subject to periodic revisions. Monitoring requirements may be modified or revised by the Executive Officer based on review of monitoring data submitted pursuant to this Order. Monitoring frequencies may be adjusted to a less frequent basis or parameters and locations dropped by the Executive Officer if the Discharger makes a request and the request is backed by statistical trends of monitoring data submitted.

V. CERTIFICATION STATEMENT

Each report shall contain the following completed declaration:

"I certify under penalty of law that this document, including all attachments and supplemental information, was prepared under my direction or supervision in accordance with a system designed to assure that qualified personnel properly gathered and evaluated the information submitted. Based on my inquiry of the person or persons who manage the system, or those persons directly responsible for gathering the information, the information submitted is, to the best of my knowledge and belief, true, accurate, and complete. I am aware that there are significant penalties for submitting false information, including the possibility of a fine and imprisonment.

Executed on the ____ day of _____ at _____

(Signature)

(Title)"

VI. PUBLIC DOCUMENTS

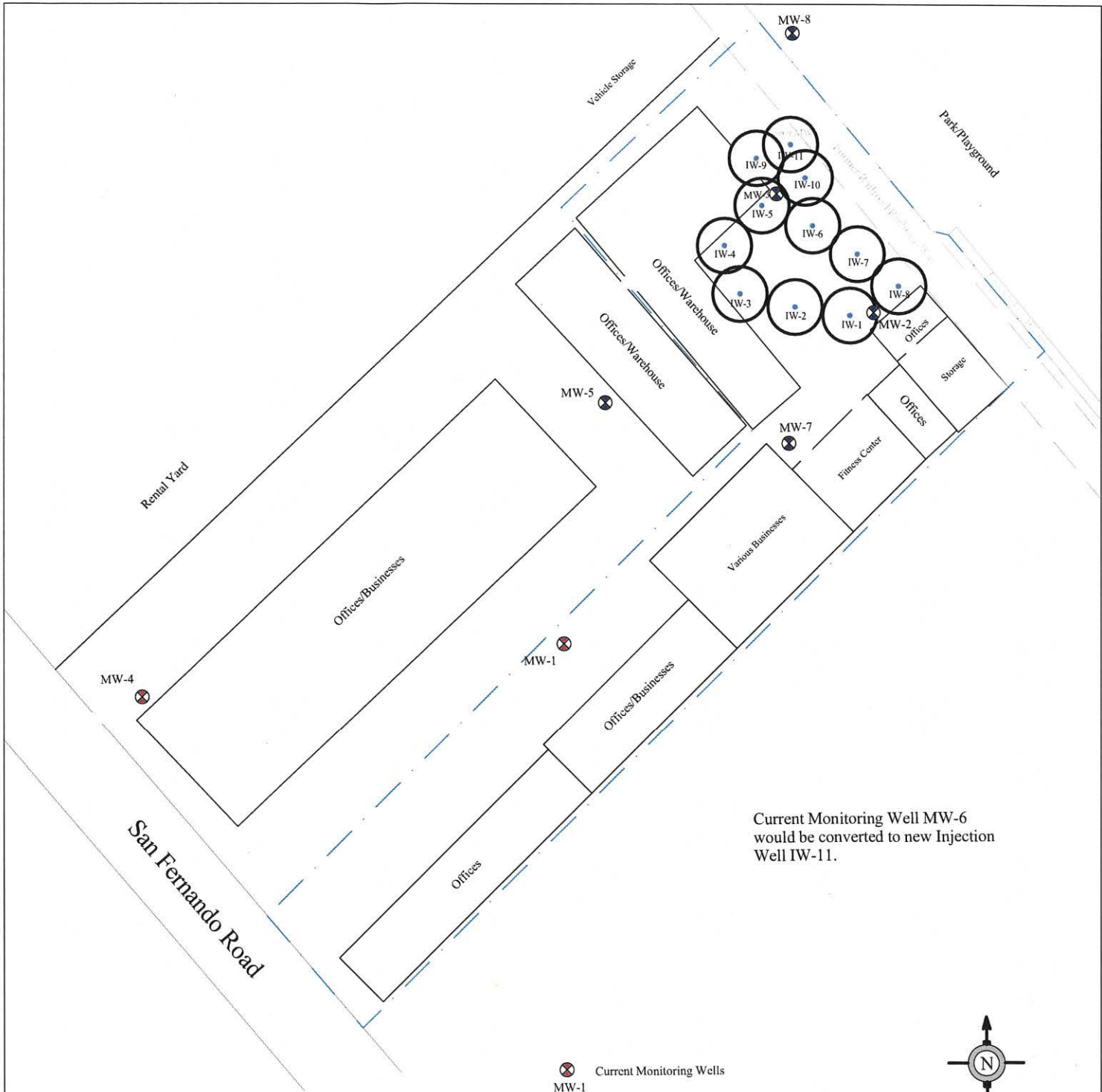
All records and reports submitted in compliance with Regional Board Order No. R4-2014-0187 and Monitoring and Reporting Program No. CI-10209 are public documents and will be made available for inspection during business hours at the office of the California Regional Water Quality Control Board, Los Angeles Region, upon request by interested parties. Only proprietary information, and only at the request of the Discharger will be treated as confidential.

VII. ELECTRONIC SUBMITTAL OF INFORMATION




The Discharger shall comply with the Electronic Submittal of Information (ESI) requirements by submitting all reports required under the MRP, including groundwater monitoring data in Electronic Deliverable Format, discharge location data, and searchable Portable Document Format of monitoring reports to the State Water Resources Control Board GeoTracker database under Global ID WDR100026615.

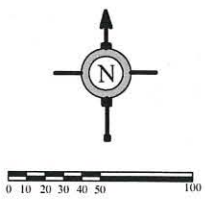
Ordered by: 
Samuel Unger, P.E.
Executive Officer

Date: August 23, 2017



Current Monitoring Well MW-6 would be converted to new Injection Well IW-11.

-  Current Monitoring Wells
MW-1
-  WDR Monitoring Wells
MW-7
-  Current Injection Well with Estimated 20-foot Effective Radius



Leymaster Environmental Consulting, LLC
 5500 East Atherton Street Suite 210
 Long Beach, California 90815

Well Locations	
Former Aerol Company Site 3235 San Fernando Road Los Angeles, California	
Figure 1	August 15, 2017