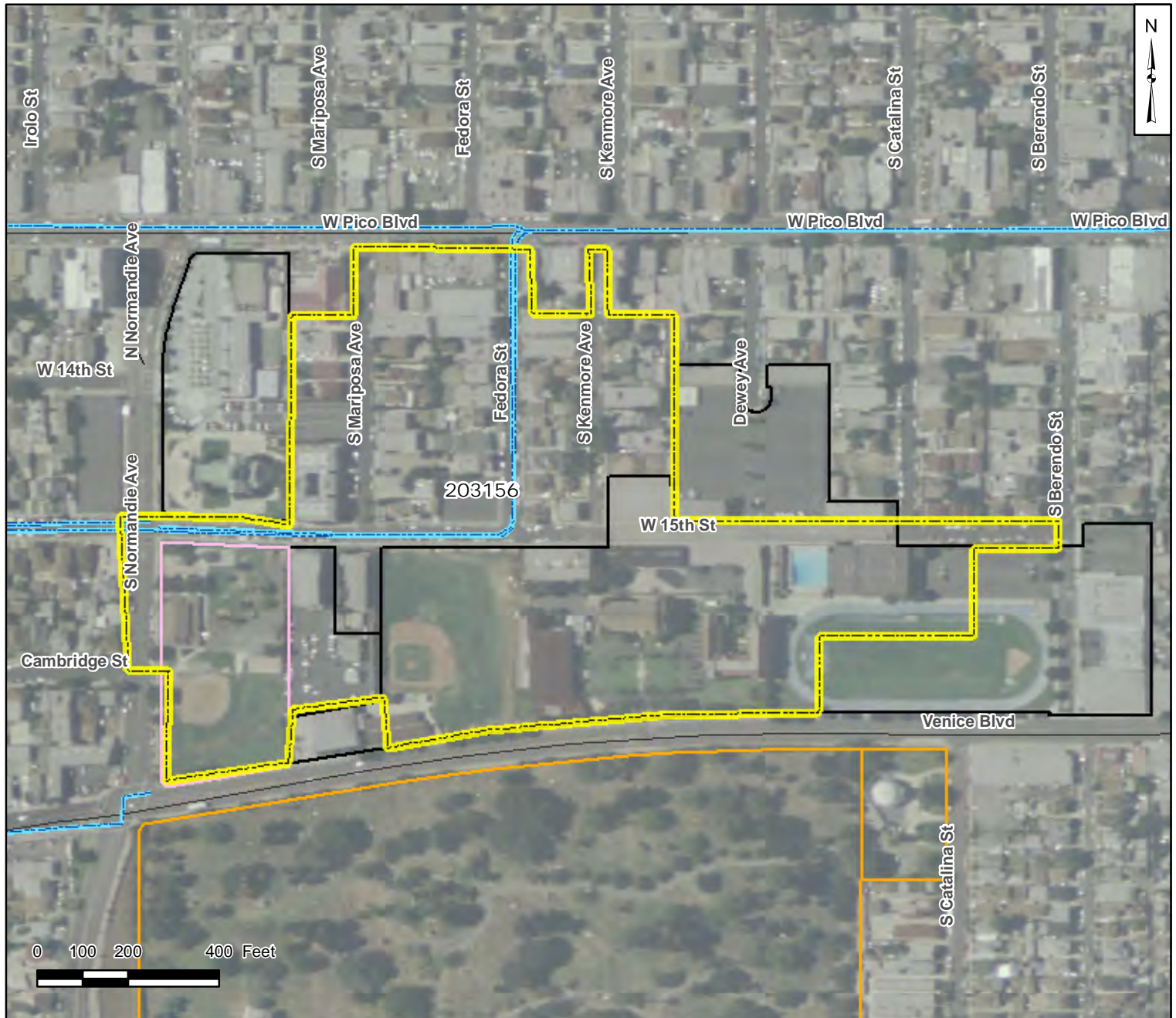


DRAFT

FOR DISCUSSION PURPOSES ONLY

Regional Priority Catchments

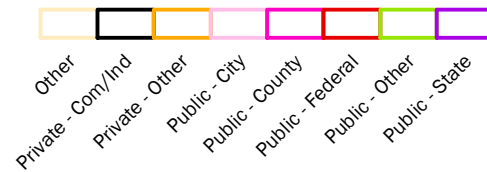
Catchment 203156



Legend

- Priority Regional BMP Catchment
- Stormdrains

Parcel Ownership



Regional BMP Score :	5	Pollutant-Specific CPI Score		
Nodal CPI Score :	3	Copper : 2	Zinc : 1	Fecal Coli : 6
Acreeage :	28.24	Lead : 1	TSS : 2	





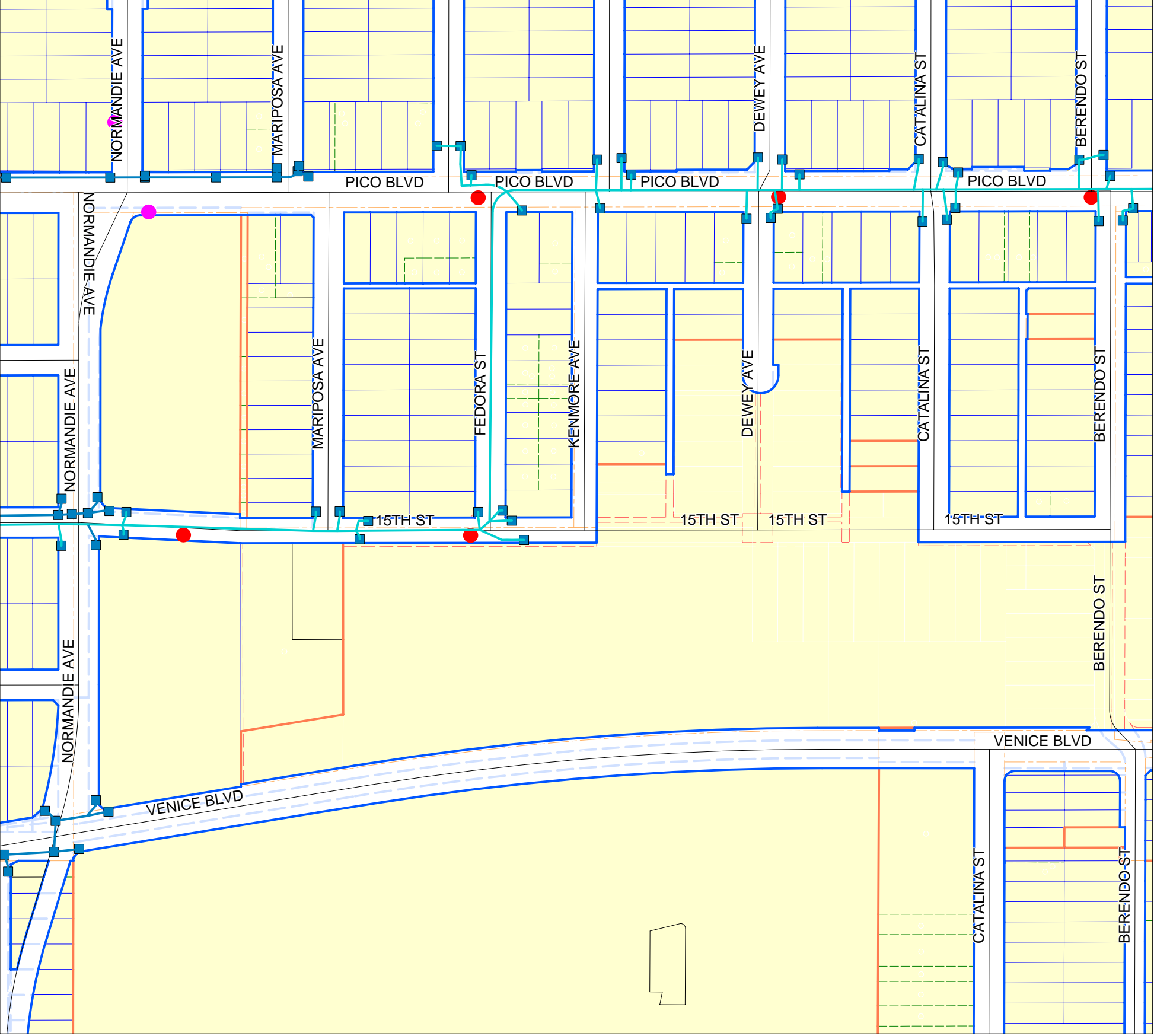
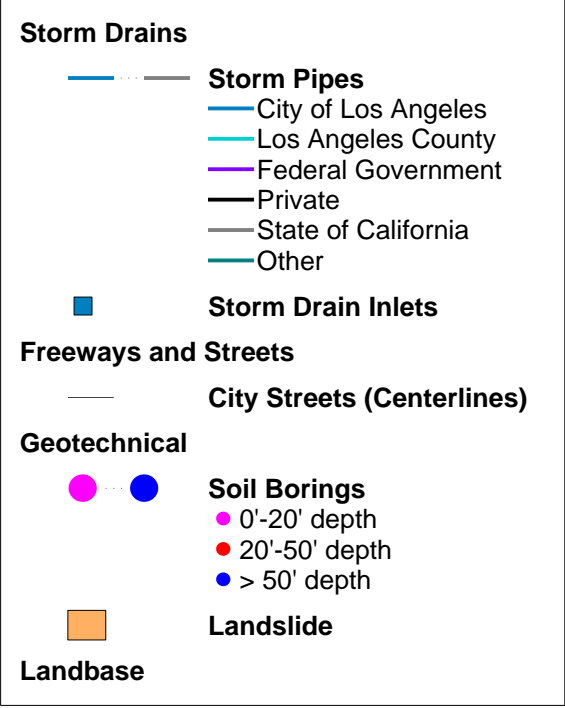
Pointer 34°02'41.13" N 118°17'50.76" W elev 223 ft

Streaming ||||| 100%

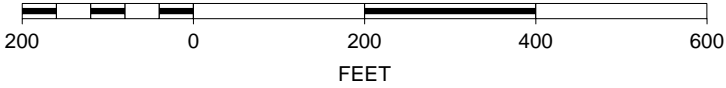
© 2007 Google™

Eye alt 982 ft

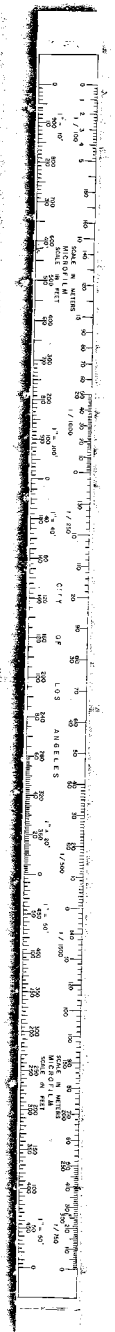
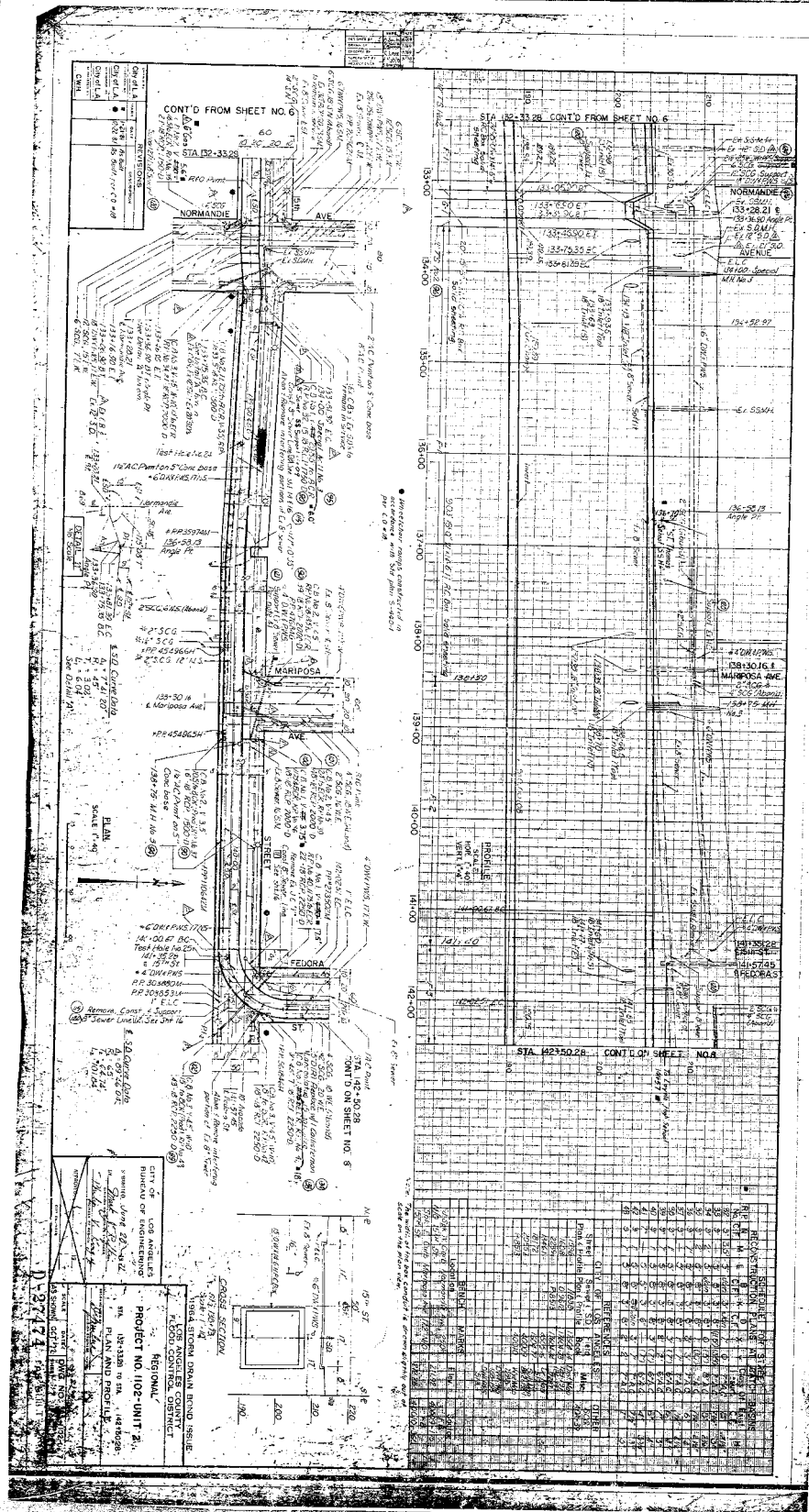
NavigateLA

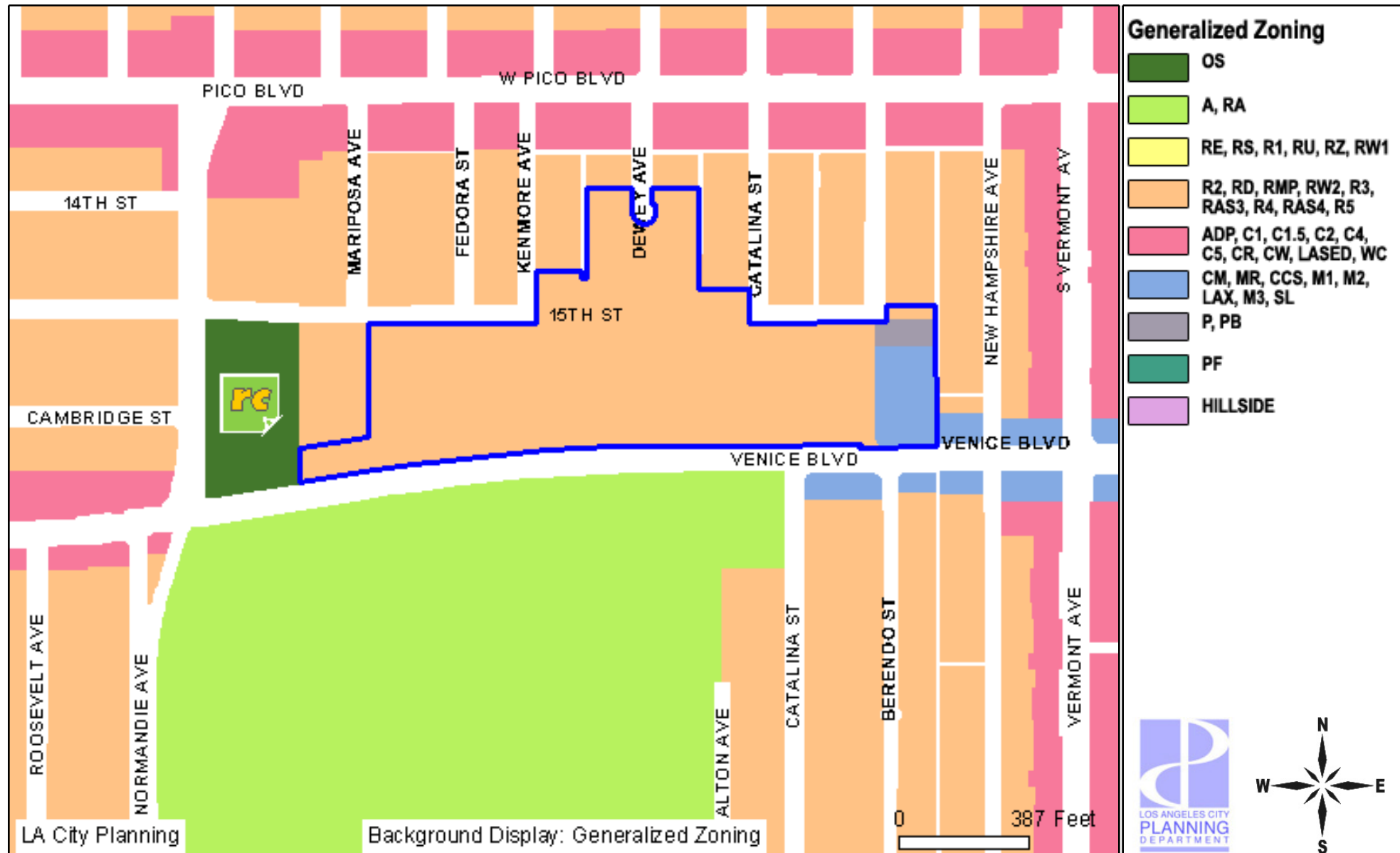


SCALE 1 : 2,693



29X





Address:
APN: 5075014019
PIN #: 126B197 1203

Tract: TR 060368
Block: None
Lot: 1
Arb: None

Zoning: (Q)CM-1, CM-2, PB-1, R3-1, RD5-1, [Q]
General Plan: Low Medium I Residential,
Low Medium II Residential,
Medium Residential,
Commercial Manufacturing

129 B 193

132 B 197

130.5 A 201

129 A 201

CITY CLERK: 02/11/09



129 B 197

CITY OF LOS ANGELES
GARY LEE MOORE CITY ENGINEER
BUREAU OF ENGINEERING C I S MAPPING DIV.
RANDY PRICE, P.E. DIVISION ENGINEER

129 B 197

G10 CITY CLERK PLOT AS OF FEBRUARY 11, 2009 MAP 615 OF 1903

126 B 197