

US Army Corps of Engineers®

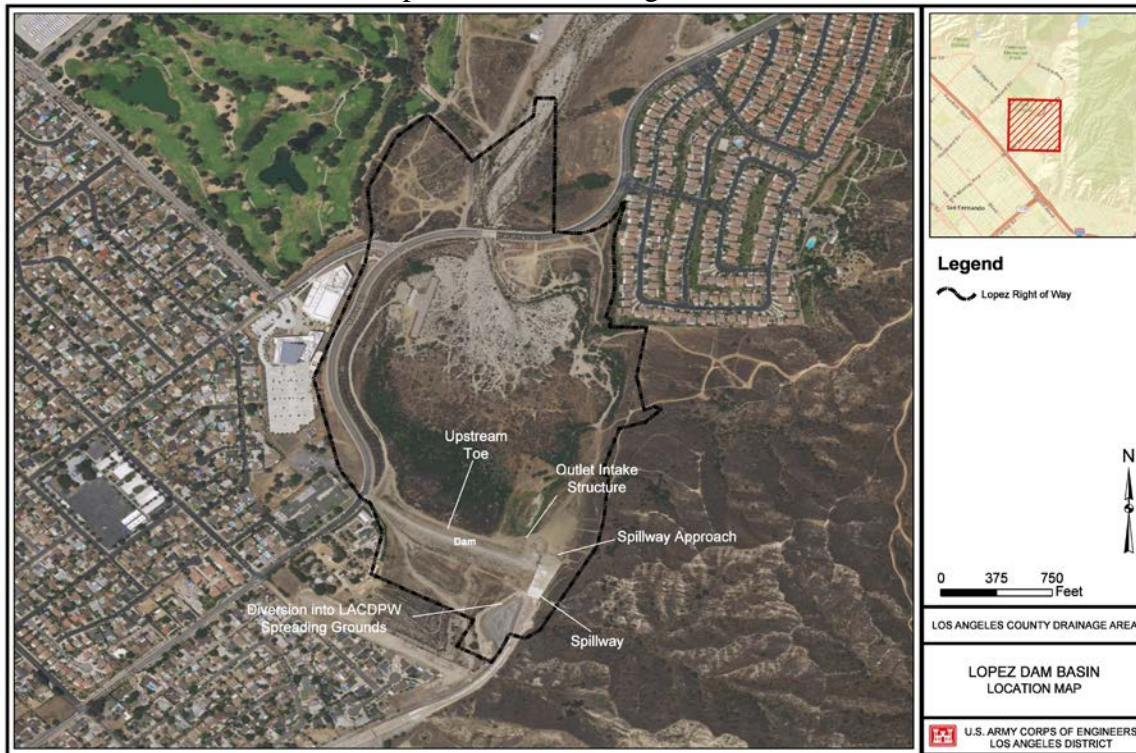
LOS ANGELES DISTRICT

Asset Management Division
Operations and Maintenance Branch
915 Wilshire Blvd, 11th Floor
Los Angeles, CA. 90017

NOTIFICATION: Pursuant to Section II.C.2.b of the May 12, 2017, Memorandum of Understanding (MOU) Between the United States Army Corps of Engineers, Los Angeles District (USACE) and the California Regional Water Quality Control Board, Los Angeles Region (LARWQCB), concerning Operation, Maintenance, Repair, Replacement, and Rehabilitation of the Los Angeles County Drainage Area Project in Waters of the United States.

SUBJECT: Annual pre-flood season sediment, debris, and vegetation removal from inlet and outlet concrete apron at Lopez Dam.

PROJECT LOCATION: Lopez Dam – Los Angeles, California.



JUSTIFICATION: Clearing of accumulated sediment, debris, and vegetation is required prior to the rainy season each year to prevent clogging of the outlet works during storms. Clogged inlet gates could block storm flows from passing through the outlet works and downstream channel which can result in flooding. Given that the heaviest rains occur in January and February, USACE has an immediate need to accomplish as much pre-rainy season maintenance work in the inlet and outlet works at each LACDA dam as possible. Lopez Dam could pose a particularly high risk this year if not cleaned out as soon as possible. Forest fires from early this year could yield significant debris flows, which could heighten the risk of failure or malfunction of the dam/functional feature thereof.

CESPL-AM-OM

SUBJECT: Notification of Annual pre-flood season sediment, debris, and vegetation removal from inlet and outlet concrete apron at Lopez Dam.

PROPOSED SCHEDULE: January 15, 2018 through January 25, 2018. Activities identified in this notification the sooner of (1) 45 days of receipt of this notification or (2) LARWQCB concurs that routine maintenance activities may proceed.

ACTIVITIES DESCRIPTION: Removal of sediment, debris, and vegetation from inlet and outlet concrete apron areas shall occur by clean excavation using mechanized equipment, such as a wheeled loader, backhoe, and dump truck. This material would then be hauled to an approved downstream uplands disposal site. No stream diversion or dewatering is proposed. No staging or stockpiling would occur within the channel.



Best Management Practices (BMPs) to be implemented to Avoid and/or Minimize Impacts to Jurisdictional Waters of the United States: All eleven of the recommended BMP's listed under Exhibit B of Attachment A – MOU between the US Army Corps of Engineers, Los Angeles District and the California Regional Water Quality Board, Los Angeles Region concerning Operation, Maintenance, Repair, Replacement, and Rehabilitation of the Los Angeles County Drainage Area Project in waters of the U.S. will be used for this ongoing maintenance activity.

APPROVED BY:

Date: December 1, 2017

Lillian D. Doherty
Chief, Operations Branch
Asset Management Division
Los Angeles District, U.S. Army Corps of Engineers