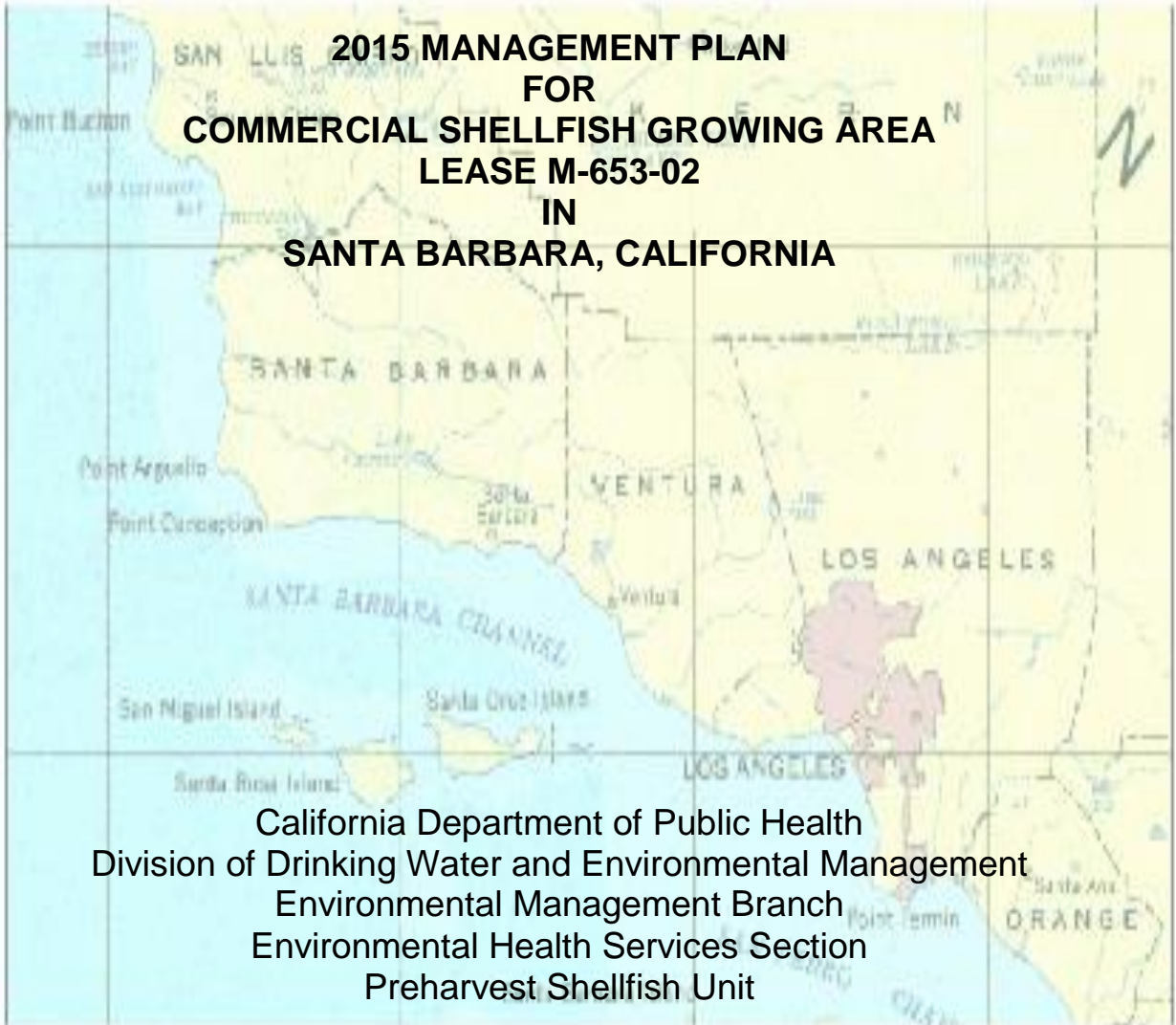


**2015 MANAGEMENT PLAN
FOR
COMMERCIAL SHELLFISH GROWING AREA
LEASE M-653-02
IN
SANTA BARBARA, CALIFORNIA**



California Department of Public Health
Division of Drinking Water and Environmental Management
Environmental Management Branch
Environmental Health Services Section
Preharvest Shellfish Unit

January 2015

I. EXECUTIVE SUMMARY

This Management Plan for the commercial shellfish growing on state aquaculture Lease M-653-02 in the Santa Barbara Channel, California, was developed pursuant to the National Shellfish Sanitation Program (NSSP) Model Ordinance, Chapter IV (2013). The Management Plan has been prepared for adoption in accordance with the procedures set forth in Division 104, Part 6, Chapter 5 of the California Health and Safety Code Section (H & S §) 112150 et seq. Any temporary closures to shellfish harvesting that may be declared pursuant to this Management Plan after its adoption shall be deemed to meet the requirements of H & S § 112160 pertaining to notice and opportunity to submit data, views, or arguments. This Management Plan establishes the standards and procedures used to regulate commercial shellfish harvesting at the Lease M-653-02 Aquaculture area.

The primary purpose of the Management Plan is to define the criteria and procedures used by the State shellfish authority for determining when bivalve shellfish can be harvested for marketing from a shellfish growing area classified as *Conditionally Approved*. Harvest activities may only occur during times when the respective growing area is open to shellfish harvesting as described in this document.

The California Department of Public Health (CDPH) is the lead agency in the State shellfish sanitation program, which certifies and regulates sanitary procedures followed in the harvesting, handling, processing, storage, and distribution of bivalve molluscan shellfish intended for sale for human consumption. Within CDPH, the Environmental Management Branch in the Division of Drinking Water and Environmental Management regulates water quality and shellfish sanitation in the growing waters, while the Food and Drug Branch in the Division of Food, Drug, and Radiation Safety regulates shellfish sanitation after harvest. This Management Plan was prepared and is administered by the Environmental Management Branch's Environmental Health Services Section, Preharvest Shellfish Unit, in cooperation with shellfish growers, wastewater treatment plant operators, public agencies, and other involved parties. The National Shellfish Sanitation Program requires that the shellfish growers, the wastewater treatment plants involved, and the applicable local and State agencies agree with the Management Plan. The failure of any one party to agree shall constitute justification to deny the application of the conditional classification to the growing area.

Lease M-653-02 is located in the Santa Barbara Channel, about one-half mile offshore from Arroyo Burro Beach. The California Department of Fish and Wildlife has issued an Aquaculture lease for this area to Mr. Bernard Friedman, owner and operator of the Santa Barbara Mariculture Company, for the purpose of growing and harvesting oysters, clams, mussels, and/or scallops. Based on the findings of the latest sanitary survey conducted by CDPH and the applicant, Lease M-653-02 area is classified as *Conditionally Approved*. The purpose of the *Conditionally Approved* classification is to provide a mechanism for the declaration of harvest closures during predictable periods when the shellfish growing area may not meet the National Shellfish Sanitation Program standards for harvesting shellfish for direct marketing for human consumption. *The Conditionally Approved* classification is based on rainfall and on the location of the outfalls from the wastewater treatment plants in the vicinity of the growing area. Non-

MANAGEMENT PLAN FOR COMMERCIAL SHELLFISH GROWING AREA M-653-02
JANUARY 2015

point sources associated with rainfall have the potential to affect the water quality in this area. The wastewater treatment plants disinfect their effluent prior to discharging into the Santa Barbara Channel, and have demonstrated the ability to meet the operational requirements of their Waste Discharge Requirements for total coliform. However, due to the possibility for an accidental spill or a discharge of effluent that has not been properly disinfected, the *Conditionally Approved* classification is warranted. The removal of shellstock from the growing waters constitutes harvesting, which is prohibited during any closure. Shellstock shall not be removed from the growing area for sorting, culling, or movement to another growing area during a closure except with written permission by the CDPH Preharvest Shellfish Unit (CDPH/PSU).

This Management Plan specifies that Lease M-653-02 area will be closed for harvesting whenever rainfall exceeds three inches within a 24-hr period based on rainfall measurements recorded by a National Weather Service rain gauge, or other approved rain gauge designated by CDPH/PSU. The fecal coliform result from a single water sample collected not less than 24 hours after the conclusion of rainfall is required prior to reopening. The Management Plan establishes procedures for emergency notification and harvest closures after discharges of inadequately treated sewage or other hazardous substance spills that may threaten the safety of harvested shellfish. Santa Barbara Mariculture Company is required to conduct water quality monitoring at Lease M-653-02 at least monthly during periods open to harvesting. The growing area classification and closure rules are reevaluated at least annually based on the water quality monitoring results.

The Management Plan also stipulates that shellstock should not be removed from the growing areas during any closure except with written permission from CDPH. Each shellfish grower is responsible for water quality monitoring monthly during open harvest periods. The water quality monitoring data collected by the commercial shellfish growers are analyzed annually to determine the appropriate growing area classifications.

Current and past significant changes to the MANAGEMENT PLAN FOR LEASE M-653-02 can be found in Appendix I.

II. TABLE OF CONTENTS

I. EXECUTIVE SUMMARY	1
II. TABLE OF CONTENTS	3
III. ABBREVIATIONS AND DEFINITIONS	7
IV. INTRODUCTION	9
V. ORGANIZATION AND RESPONSIBILITIES	10
A. CALIFORNIA DEPARTMENT OF PUBLIC HEALTH	10
1. Environmental Management Branch	10
2. Food and Drug Branch	10
B. U.S. FOOD AND DRUG ADMINISTRATION	10
C. CALIFORNIA DEPARTMENT OF FISH AND WILDLIFE	11
D. CALIFORNIA CENTRAL COAST REGIONAL WATER QUALITY CONTROL BOARD	11
E. SANTA BARBARA COUNTY ENVIRONMENTAL HEALTH SERVICES	11
F. MONTECITO SANITARY DISTRICT	11
G. CARPINTERIA SANITARY DISTRICT	11
H. SUMMERLAND SANITARY DISTRICT	12
I. GOLETA SANITARY DISTRICT	12
J. CITY OF SANTA BARBARA, EL ESTERO WASTEWATER TREATMENT PLANT	12
K. SANTA BARBARA MARICULTURE COMPANY	12
VI. GROWING AREA CLASSIFICATION	12
A. CONDITIONALLY APPROVED AREA	12
B. CLASSIFICATION MAINTENANCE	13
VII. COMPANY CERTIFICATION	13
A. REQUIREMENTS FOR CERTIFICATION	13
B. CERTIFICATE COMPLIANCE	13
VIII. PERFORMANCE STANDARDS	14
A. POTENTIAL NON-POINT SOURCES OF POLLUTION	14
B. POTENTIAL POINT SOURCES OF POLLUTION	14
C. PROHIBITED AREAS ESTABLISHED	14
1. Montecito, Carpinteria, Summerland, and Goleta Wastewater Treatment Plants .	15
2. City of Santa Barbara's El Estero Wastewater Treatment Plant	15
3. City of Santa Barbara Harbor	15
4. Unclassified Areas	15
5. Violation of State Laws and Regulations	15
IX. HARVEST CLOSURE AND NOTIFICATION PROCEDURES	15
A. RAINFALL CLOSURES	16
1. Closure Rules	16
2. Extreme Environmental Conditions	16
3. Movement of Shellstock	17
B. EMERGENCY CLOSURES: SEWAGE COLLECTION SYSTEM UPSETS	19
C. EMERGENCY CLOSURES: WWTP MALFUNCTIONS	19
D. EMERGENCY CLOSURES: HAZARDOUS SUBSTANCE SPILLS	20
E. OTHER EMERGENCY CLOSURES	20
F. NOTIFICATION PROCEDURES	20

MANAGEMENT PLAN FOR COMMERCIAL SHELLFISH GROWING AREA M-653-02
JANUARY 2015

1. California Department of Public Health	20
2. Central Coast Regional Water Quality Control Board	22
3. Santa Barbara County Environmental Health Services	23
4. City of Santa Barbara's El Estero Wastewater Treatment Plant and Montecito, Carpinteria, Summerland, and Goleta Sanitary Districts	23
5. Impact Assessment	24
X. CERTIFIED SHELLFISH HARVESTER RESPONSIBILITIES	24
A. SEED	24
B. HARVEST CLOSURE	24
1. Business Hours	25
2. Non-Business Hours	25
C. RECEIVING AND ACKNOWLEDGING NOTIFICATIONS	25
D. REPORTS OF SEWAGE OR HAZARDOUS SUBSTANCE SPILLS	25
1. Business Hours	25
2. Non-Business Hours	25
E. WASTEWATER TREATMENT PLANT NOTIFICATION	26
F. RECORD KEEPING	26
G. AUDITS	26
H. LIVE-ABOARDS	26
I. WILDLIFE	27
XI. REOPENING PROCEDURES	27
A. RAINFALL CLOSURES	27
B. SEASONAL CLOSURES	27
C. SEWAGE OR HAZARDOUS SUBSTANCE SPILLS	28
1. Investigation	28
2. Harvest Reopening	28
3. Notification	28
D. REOPENING WHEN SAMPLING IS REQUIRED	28
XII. PREVENTION OF ILLEGAL HARVESTING (PATROL)	28
A. ILLEGAL HARVESTING OF SHELLFISH	28
B. DEPARTMENT OF FISH AND WILDLIFE, WILDLIFE PROTECTION DIVISION	29
C. ILLEGAL MARKETING	29
D. HARVESTER COMPLIANCE WITH CLOSURES	29
XIII. WATER QUALITY MONITORING	30
A. WATER SAMPLING REQUIREMENTS	30
B. TRANSPORTATION	31
C. LABORATORY	31
D. WATER SAMPLES EXCEEDING NSSP CRITERIA	31
XIV. MARINE BIOTOXIN MONITORING	32
A. CONDITIONS AND PROCEDURES	32
1. Paralytic Shellfish Poisoning Assays	33
2. Phytoplankton Observations	33
3. Domoic Acid Analysis	33
4. Field Sampling Protocol	34
5. Additional Sampling	34
B. CLOSURE CRITERIA	34

MANAGEMENT PLAN FOR COMMERCIAL SHELLFISH GROWING AREA M-653-02
JANUARY 2015

1. Domoic Acid Alert Level	34
2. Paralytic Shellfish Poisoning Alert Level	34
3. Samples Exceeding the Alert Level.....	34
4. Failure to Submit Required Samples.....	35
C. RESTRICTED HARVEST CRITERIA.....	35
D. SIZE OF CLOSED AREA.....	35
E. SPECIES RESTRICTIONS	35
F. SAMPLING DURING A MARINE BIOTOXIN CLOSURE OR HARVEST RESTRICTION	35
G. REOPENING CRITERIA.....	35
XV. GROWING AREA REEVALUATION	36
XVI. AGREEMENT OF INVOLVED PARTIES	36
A. PUBLIC AGENCIES.....	36
B. PERMITTED FACILITIES	37
C. COMMERCIAL SHELLFISH GROWER.....	37
D. FORWARDING OF SIGNED STATEMENTS	37
XVII. SUMMARY OF AGREEMENTS	38
A. CALIFORNIA DEPARTMENT OF FISH AND WILDLIFE	38
B. CALIFORNIA REGIONAL WATER QUALITY CONTROL BOARD, CENTRAL COAST REGION	38
1. Notification	38
2. Performance Standards	38
3. Waste Discharge Requirements.....	38
C. SANTA BARBARA COUNTY ENVIRONMENTAL HEALTH SERVICES	39
TABLE 1. WASTEWATER TREATMENT PLANTS PERMITTED TO DISCHARGE TO THE SANTA BARBARA CHANNEL UNDER WASTE DISCHARGE REQUIREMENTS FROM THE CALIFORNIA REGIONAL WATER CONTROL BOARD, CENTRAL COAST REGION.	41
TABLE 2. WASTE DISCHARGE REQUIREMENTS AND MONITORING AND REPORTING PROGRAMS FOR WASTEWATER TREATMENT PLANTS IN THE SANTA BARBARA AREA.	42
TABLE 3. MANAGEMENT DECISION CRITERIA FOR DOMOIC ACID TOXICITY IN BIVALVE SHELLFISH.....	44
TABLE 4. MANAGEMENT DECISION CRITERIA FOR PSP TOXICITY IN BIVALVE SHELLFISH.....	45
FIGURE 1. LOCATION OF LEASE M-653-02, WASTEWATER TREATMENT PLANT OCEAN OUTFALLS, AND <i>PROHIBITED</i> AREAS IN THE SANTA BARBARA CHANNEL.	47
FIGURE 2. CALCULATED SAFE DISTANCES IN SANTA BARBARA CHANNEL BETWEEN MOORED LIVE-ABOARD BOATS AND SHELLFISH GROWING AREAS	48
APPENDIX A. CONTACT LIST FOR SANTA BARBARA LEASE M-653-02	50
APPENDIX B. MEMORANDUM OF UNDERSTANDING	52
APPENDIX C. STANDARD OPERATING PROCEDURE TEMPLATE FOR MOVEMENT, WORKING, GRADING, AND TRANSPLANTING OF SHELLSTOCK DURING HARVEST CLOSURES	56
APPENDIX D. WASTEWATER UPSET RESPONSE PROCEDURES	60

MANAGEMENT PLAN FOR COMMERCIAL SHELLFISH GROWING AREA M-653-02
JANUARY 2015

APPENDIX E. SHELLFISH HARVESTER'S MONTHLY REPORT OF
RAINFALL AND HARVEST OPERATIONS 64
APPENDIX F. HARVESTING DAY WWTP CONTACT LOG..... 65
APPENDIX G. MARINE BIOTOXIN MONITORING 67
APPENDIX H. STATEMENTS OF AGREEMENT 73
APPENDIX I. RECORD OF CHANGES 76

III. ABBREVIATIONS AND DEFINITIONS

This document contains many acronyms and abbreviations. In general, an abbreviation will be given in parentheses () following the first time a title or term is used, and the abbreviation will be used in almost all cases in place of that term later. The following alphabetical list of abbreviations used in this document is provided to assist the reader:

ABBREVIATION	DESCRIPTION
Cal-OES	California Governor's Office of Emergency Services
CCRWQB	California Central Coast Regional Water Quality Control Board
CDFW	California Department of Fish and Wildlife
CDPH	California Department of Public Health
CDPH/DDWEM	Division of Drinking Water and Environmental Management
CDPH/EHSS	Environmental Health Services Section (within CDPH/EMB)
CDPH/EMB	Environmental Management Branch (within CDPH/DDWEM)
CDPH/FDB	Food and Drug Branch (within CDPH)
CDPH/PSU	California Department of Public Health, Preharvest Shellfish Unit
FDA	U.S. Food and Drug Administration
GIL	Growers' Information Line
H & S §	Section of the California Health and Safety Code
ICSSL	Interstate Certified Shellfish Shippers List
MGD	Million Gallons per Day
mL	Milliliters
MOU	Memorandum of Understanding
MPN	Most Probable Number
NSSP	National Shellfish Sanitation Program
PSP	Paralytic Shellfish Poisoning
RDO	Rainfall Duty Officer (a designated staff person in CDPH/PSU)
SBCEHS	Santa Barbara County Environmental Health Services
SBMC	Santa Barbara Mariculture Company
SWRCB/ELAP	State Water Resources Control Board Environmental Laboratory Accreditation Program
SOP	Standard Operating Procedures
SRS	Systematic Random Sampling
SSP	State Shellfish Program
WDRs	Waste Discharge Requirements (adopted by CCRWQCB)
WWTP	Waste Water Treatment Plant

The following definitions shall apply to this document:

Harvest. The act of removing shellstock from growing areas and its placement on or in a manmade conveyance or other means of transport.

Shall. The term "shall" is used in this plan in its legal or regulatory sense to denote a mandatory requirement.

Shellfish grower or harvester. For the purposes of this plan, the terms "grower" and "harvester" refer to the same persons or firms and may be used interchangeably. Because the plan relates primarily to the management of shellfish harvesting, the term "harvester" will be found most frequently.

Direct marketing. Direct marketing means the sale of shellfish harvested without undergoing purification (relaying or depuration).

IV. INTRODUCTION

Lease M-653-02 is located in the Santa Barbara Channel, approximately 3200 feet from the shore at its nearest point off of Arroyo Burro Beach in Santa Barbara County. The growing area is approximately 72 acres, 2500 feet long by 1250 feet wide, with the length running approximately parallel to the shore (Figure 1). The California Department of Fish and Wildlife (CDFW) has issued an Aquaculture lease for this area to Mr. Bernard Friedman, owner and operator of the Santa Barbara Mariculture Company (SBMC), for the purpose growing and harvesting oysters, clams, mussels, and scallops. Non-point sources of contamination from the watershed for this area have the potential for impacting the growing area, mainly during rainfall related runoff from local drainages. There are also five municipal wastewater treatment plants (WWTPs) in the area that disinfect their effluent prior to discharge into the Santa Barbara Channel. These WWTPs include the City of Santa Barbara's El Estero Wastewater Treatment Plant, and the collection, treatment, and disposal systems of the Montecito Sanitary District, the Carpinteria Sanitary District, the Summerland Sanitary District, and the Goleta Sanitary District. Spills or malfunctions of the disinfection process could impact the growing area.

Because Lease M-653-02 may be subject to intermittent microbiological pollution from various sources, the commercial shellfish growing area is classified as *Conditionally Approved*. The National Shellfish Sanitation Program (NSSP) Model Ordinance (2013), Chapter IV, requires development of a Management Plan for any *Conditionally Approved* growing area. This Management Plan sets forth the standards and criteria necessary to manage the harvesting of bivalve molluscan shellfish intended for human consumption.

This Management Plan establishes the standards and procedures used to regulate commercial shellfish harvesting at the Lease M-653-02 Aquaculture area and has been prepared for adoption in accordance with the procedures set forth in Sanitary Control of Shellfish, (H & S § 112150 Division 104, Part 6, Chapter 5) and will constitute an order of the Director of the California Department of Public Health (CDPH) as described in H & S § 112160(c).

A key part of this Management Plan is the establishment of standards, conditions, and procedures for closure of the growing area at times of predictable elevated pollution following periods of significant rainfall, as well as for emergency closures established for unpredictable events such as sewage spills or oil spills. They have been set forth in this plan such that when the specified events occur, then predetermined actions are implemented. Any temporary closure to shellfish harvesting resulting from these pollution events that may be declared pursuant to this Management Plan shall be deemed to meet the requirements of Section 112160(d) pertaining to notice and opportunity to submit data, views, or arguments. Rainfall closures declared under this Management Plan are not considered "emergency actions" referred to in H & S § 112160(e), but instead are dealt with as part of the Director's order establishing this plan. Compliance by the certified shellfish grower/harvester with the conditions and procedures set forth in this Management Plan is mandatory as a condition of the Shellfish Growing Area Certificate issued for the aquaculture growing area.

It is a violation of state laws and regulations to culture, harvest, or hold shellfish intended for sale for human food except in or from areas that have been specifically identified in a valid Shellfish Growing Area Certificate issued by CDPH/PSU. The holding of shellfish in any other waters prior to on-shore processing, storage, and marketing is a prohibited activity. Any shellfish held in uncertified waters, or in water-filled tanks or containers, which have not been specifically approved by CDPH/PSU for that purpose, are subject to embargo and/or destruction by CDPH/PSU or its authorized agents.

V. ORGANIZATION AND RESPONSIBILITIES

Numerous agencies and individuals are involved parties to the management of the Lease M-653-02 Aquaculture Area. A detailed contact list is provided in Appendix A.

A. CALIFORNIA DEPARTMENT OF PUBLIC HEALTH

California Department of Public Health (CDPH) is the lead agency for the State Shellfish Program (SSP) and is the agency responsible for growing area classification, issuing growing area certificates and for decision making regarding harvest closures and reopening of commercial shellfish growing areas. Within CDPH, the Deputy Director of the Center for Environmental Health has overall responsibility for the California SSP. Two major program segments are housed in the following branches:

1. Environmental Management Branch

The Chief of the Environmental Management Branch (EMB), through the Chief of the Environmental Health Services Section (EHSS), is responsible for the CDPH Preharvest Shellfish Unit (CDPH/PSU). The Chief of the CDPH/PSU heads a staff of several Environmental Scientists and coordinates activities as it relates to the evaluation, classification, and certification of commercial shellfish growing areas as well as routine monitoring for marine biotoxins.

2. Food and Drug Branch

The Chief of the Food and Drug Branch (CDPH/FDB) is responsible for the postharvest shellfish program as it relates to the regulation of shellfish handling, processing, storage, and distribution after harvest, including the labeling and identification of shellfish moving in commerce. FDB provides assistance in the area of patrol, prevention of illegal shellfish harvesting and illness investigations.

B. U.S. FOOD AND DRUG ADMINISTRATION

A primary responsibility of the U.S. Food and Drug Administration (FDA) is to ensure conformity of the SSP with the guidelines and procedures for the classification and management of shellfish growing areas as outlined in the NSSP Model Ordinance (2013). Conformity with the Model Ordinance ensures national uniformity of state programs, and the health and safety of shellfish products in intra- and interstate

commerce. FDA conducts annual reviews and evaluations of the SSP, and provides recommendations, technical assistance, and training designed to improve the effectiveness of those programs.

C. CALIFORNIA DEPARTMENT OF FISH AND WILDLIFE

The California Department of Fish and Wildlife (CDFW) participates in the SSP through the terms of the "Memorandum of Understanding (MOU) between the CDFW and the Department of Public Health regarding the California Shellfish and Paralytic Shellfish Poisoning Prevention Program." Within CDFW, the Conservation, Education, and Enforcement Branch, with its game wardens, provides assistance to CDPH/PSU in the area of patrol and prevention of illegal shellfish harvesting by both sport and commercial harvesters. In addition, CDFW's Marine Resources Division issues and administers State aquaculture leases for the California Fish and Game Commission.

D. CALIFORNIA CENTRAL COAST REGIONAL WATER QUALITY CONTROL BOARD

The CCRWQCB is responsible for regulating dischargers of wastes to any body of water in the region. The CCRWQCB sets standards for waste dischargers, issues permits to them in the form of Waste Discharge Requirements (WDR) and Monitoring and Reporting Programs (MRP), and monitors their performance.

E. SANTA BARBARA COUNTY ENVIRONMENTAL HEALTH SERVICES

The County Health Officer is responsible for all matters pertaining to public health within Santa Barbara County, including the county's incorporated cities. The Director of Santa Barbara County Environmental Health Services (SBCEHS) is responsible for enforcing the laws and regulations pertaining to environmental health, including the proper handling and disposal of sewage from private premises.

F. MONTECITO SANITARY DISTRICT

The Montecito Sanitary District operates a wastewater collection, treatment, and disposal system that provides service to the Montecito area. Montecito is situated at the City of Santa Barbara's eastern border. The outfall from the WWTP is approximately 6.3 miles from the aquaculture area.

G. CARPINTERIA SANITARY DISTRICT

The Carpinteria Sanitary District operates a wastewater collection, treatment, and disposal system that provides service to the City of Carpinteria and portions of Santa Barbara County. The City of Carpinteria is located approximately twelve miles to the east of Santa Barbara. The end of the outfall from the WWTP is approximately 13.1 miles from the aquaculture area.

H. SUMMERLAND SANITARY DISTRICT

The Summerland Sanitary District operates a wastewater collection, treatment, and disposal system that provides service to the unincorporated community of Summerland. Summerland is situated on Montecito's eastern border. The end of the outfall from the WWTP is approximately 9.1 miles from the aquaculture area.

I. GOLETA SANITARY DISTRICT

The Goleta Sanitary District operates a wastewater collection, treatment, and disposal system that provides service to Goleta Sanitary District, Goleta West Sanitary District, University of California at Santa Barbara, Santa Barbara Municipal Airport, and facilities of Santa Barbara County. The City of Goleta is located approximately eight miles to the west of Santa Barbara. The end of the outfall from the WWTP is approximately 4.1 miles from the aquaculture area.

J. CITY OF SANTA BARBARA, EL ESTERO WASTEWATER TREATMENT PLANT

The City of Santa Barbara, El Estero Wastewater Treatment Plant is a wastewater collection, treatment, and disposal system that provides service to the City of Santa Barbara and portions of Santa Barbara County. The end of the outfall from the WWTP is approximately 4.7 miles from the aquaculture area.

K. SANTA BARBARA MARICULTURE COMPANY

Mr. Bernard Friedman, Santa Barbara Mariculture Company, is the commercial shellfish grower for Lease M-653-02 Aquaculture Area and was issued a Shellfish Growing Area Certificate by CDPH for commercial shellfish growing and harvesting of oysters, clams, mussels, and scallops at this location. SBMC is listed as a shellstock shipper (#614) on the FDA Interstate Certified Shellfish Shippers List (ICSSL).

VI. GROWING AREA CLASSIFICATION

A. CONDITIONALLY APPROVED AREA

The Santa Barbara Lease M-653-02 Aquaculture Area is classified as *Conditionally Approved* for commercial shellfish production in accordance with the NSSP Model Ordinance, Chapter IV (2013). A *Conditionally Approved* area is one that meets the NSSP water quality standards for an *Approved* area (an area from which shellfish may be harvested for direct marketing for human consumption), except during relatively short periods of time when the area does not meet the standards and must be closed to harvesting. Direct marketing means the sale of shellfish harvested without having to undergo purification (relaying or depuration). The factors determining closed periods must be known, predictable, and not excessively complex. The purpose of the *Conditionally Approved* classification is to provide a mechanism, through this Management Plan, for the declaration of harvest closures when pollution impacts to the

growing area would cause water and shellfish quality to potentially exceed the standards for an *Approved* growing area.

B. CLASSIFICATION MAINTENANCE

To maintain the *Conditionally Approved* classification, all Certified Commercial Shellfish Growers shall take a minimum of one water sample per month when in an open status at each primary sample site using the systematic random sampling (SRS) protocol as directed in the Sampling Plan for Santa Barbara Mariculture Company. In order to obtain rainfall impact data, additional samples should be collected whenever possible during periods of adverse pollution conditions. (See Section XIII.A for additional information on water quality sampling requirements).

VII. COMPANY CERTIFICATION

A. REQUIREMENTS FOR CERTIFICATION

It is unlawful in California to sell, offer, or hold for sale for human consumption any bivalve shellfish unless the harvest area is properly classified and certified by CDPH. A Shellfish Growing Area Certificate is issued to the commercial shellfish company when an application has been accepted for filing, a complete shoreline survey and sanitary survey have been conducted and support this activity, and the growing area in question has been properly classified as Approved or Conditionally Approved. An area classified as Restricted or Conditionally Restricted must have an associated relay plan or depuration plant approved by CDPH before a certificate will be issued. The Shellfish Growing Area Certificate expires annually on February 15 and must be renewed each year by submitting an application.

B. CERTIFICATE COMPLIANCE

The Shellfish Growing Area Certificate contains conditions that the company must meet, including compliance with this Management Plan. If the company holding a current Shellfish Growing Area Certificate violates one or more conditions of the certificate then CDPH may suspend, revoke, or deny renewal of the certificate.

CDPH will conduct field audits and record reviews as part of the ongoing evaluation of company compliance. In accepting a Shellfish Growing Area Certificate the company agrees to cooperate with all requests by CDPH for these audit activities. Companies will be audited on at least an annual basis to ensure that they are performing all responsibilities adequately. Annual audits will include, but not be limited to, evaluation of proper procedures for water quality and biotoxin sampling; maintaining sanitary conditions for all harvest equipment and vessels; maintaining accurate and complete records for all harvest closures, harvest activities and shellstock handling during harvest closures under an approved Standard Operating Procedure (SOP); compliance with the SRS schedule; and compliance with harvest closures. During the annual field audits CDPH can provide orientation and training to new company employees for water quality

sampling, shellfish sample preparation for biotoxin analyses, or proper use of field test kits for marine toxins.

VIII. PERFORMANCE STANDARDS

A. POTENTIAL NON-POINT SOURCES OF POLLUTION

Non-point sources of pollution are those sources that cannot be attributed to a specific discharge location. Water quality samples obtained for the 1998 sanitary survey of the area immediately to the east of Lease M-653-02 (i.e., closer to shore) confirmed that fecal coliform bacteria from onshore sources of pollution could impact the offshore shellfish growing areas. Limited data was collected during rainfall events, thus the relationship between precipitation and runoff and the resultant degradation of water and shellfish quality has not been fully established. Additional rainfall data was collected during the 2002–2003 and the 2003–2004 rain season to establish a threshold of three (3) inches of rainfall within any 24-hour period. CDPH/PSU also closely monitors the County's beach monitoring data to determine if the growing area should be closed to harvesting of shellfish. A beach closure in the vicinity of the lease area could cause the closure and/or additional sampling of the growing area.

B. POTENTIAL POINT SOURCES OF POLLUTION

Sources of pollution that can be attributed to a specific site or location are known as "point sources". Wastewater Treatment Plants fall into this category. The CCRWQCB issues WDRs to all major discharge facilities in the Santa Barbara area. CDPH/PSU reviews proposed WDRs and makes recommendations when necessary regarding the shellfish growing areas. The CCRWQCB provides copies of the WDRs and annual reports for these dischargers to the CDPH/PSU office in Richmond. These documents are reviewed by CDPH/PSU staff and maintained in the program's files. There are five WWTPs that discharge treated municipal wastewater to the Pacific Ocean in the Santa Barbara Channel that have the potential to adversely impact the shellfish growing water quality of Lease M-653-02 (Figure 1). Section V of the Management Plan lists the five treatment plants and provides the location of each treatment plant's outfall with respect to the growing area. All of these facilities have WDRs that have effluent limitations on constituents and properties for protection of marine life and human health (Tables 1 and 2). The WDRs for all facilities include a requirement to notify CDPH and any commercial shellfish growers in the Santa Barbara Channel in the event of a discharge of inadequately disinfected effluent within 4-hours or by 10 AM the following morning for events after 5 PM and before 6 AM.

C. PROHIBITED AREAS ESTABLISHED

Prohibited areas are those areas where the commercial harvesting of shellfish is not allowed. Water quality in these areas either has not been determined, or does not meet the NSSP standards for shellfish growing waters as determined during the sanitary survey of the area. The size of the *Prohibited* areas for the El Estero ocean outfall and the Santa Barbara Harbor were based on calculations of potential fecal coliform levels

and the amount of dilution required to reduce the fecal coliform to acceptable levels. The Prohibited areas established around the outfalls of the remaining WTPPs are the calculated distance of 2 miles that a plume of inadequately disinfected effluent could travel in the required notification time of 4-hours assuming a current of 0.82 feet per second in any given direction away from the outfall. This method was more conservative than the results of dilution modeling for these plants.

1. Montecito, Carpinteria, Summerland, and Goleta Wastewater Treatment Plants

Prohibited area with a radius of two miles is established around the ocean outfall of the Montecito, Carpinteria, Summerland, and Goleta wastewater treatment plants.

2. City of Santa Barbara's El Estero Wastewater Treatment Plant

Prohibited area with a radius of three miles is established around the ocean outfall of the City of Santa Barbara's El Estero Wastewater Treatment Plant.

3. City of Santa Barbara Harbor

Prohibited area is established inside the City of Santa Barbara harbor and within a one-half mile radius around the mouth of the harbor.

4. Unclassified Areas

All parts of the Santa Barbara coast area not specifically designated as a certified aquaculture lease are unclassified and therefore considered *Prohibited* areas.

5. Violation of State Laws and Regulations

It is a violation of State laws and regulations to culture, harvest, or hold shellfish intended for sale for human food except in or from areas that have been specifically identified in a valid Shellfish Growing Area Certificate issued by CDPH/PSU. The holding of shellfish in any other waters prior to on-shore processing, storage, and marketing is a prohibited activity. Any shellfish held in uncertified waters, or in water-filled tanks or containers that have not been specifically approved by CDPH/PSU for that purpose, are subject to embargo and/or destruction by CDPH/PSU.

IX. HARVEST CLOSURE AND NOTIFICATION PROCEDURES

This section provides the closure criteria and notification procedures to be followed by the certified commercial shellfish harvester, and by appropriate State and local agencies, to ensure prompt notification and subsequent closure of the Santa Barbara Lease M-653-02 Aquaculture Area by CDPH/PSU to shellfish harvesting. These procedures shall be followed whenever any pollution event or condition occurs as described below, that is likely to degrade the water quality in the *Conditionally Approved* shellfish growing area to the degree that it does not meet the NSSP minimum standards for an *Approved* area.

A. RAINFALL CLOSURES

Since rainfall closures are an important management tool for the growing area, the grower should call the Growers' Information line (GIL) prior to harvesting during any period of rainfall. If the grower is still unsure as to the status of the growing area, he should contact the rainfall duty officer (RDO) at (510) 412-4638 to determine if the GIL is in the process of being updated (on weekends and off-hours, leave a message on the GIL). CDPH/PSU staff will make all reasonable efforts to ensure that the GIL is current and accurate. However, the GIL is not updated on a continuous basis, and changes that occur in the growing area status due to overnight rainfall will not be updated on the GIL until business hours the following day. If there has been rainfall in the past 24 hours, the grower shall not harvest unless there is an updated message on the GIL, CDPH/PSU staff states that the growing area is open, or the grower is able to obtain reliable information that the growing area is open. If the grower harvests before obtaining current information on the growing area status, and the growing area is closed, the grower shall be responsible to return all harvested shellfish to the same location it was harvested from.

1. Closure Rules

The M-653-02 shellfish growing area will be closed for harvesting of shellfish for human consumption immediately after a 24-hour cumulative rainfall of 3.0 inches is exceeded as indicated at the National Weather Service rain gauge located at the Santa Barbara Airport (www.crh.noaa.gov/data/obhistory/KSBA.html) or an alternate rain gauge selected by CDPH/PSU if this one is unavailable. CDPH/PSU will notify the commercial shellfish grower whenever the rainfall threshold is exceeded and the growing area is closed. The commercial shellfish grower shall acknowledge receipt of this notification within 24-hours. When determined, an estimated reopening time will be provided. The status of the growing area can be obtained by calling the 24-hour GIL at (510) 412-4644. If the commercial shellfish grower harvests before obtaining current information on the growing area status, and the growing area are closed, the commercial shellfish grower shall be responsible to return all harvested shellfish to the same location it was harvested from. See Section XI for the requirements for reopening.

2. Extreme Environmental Conditions

In the case of unusually heavy or prolonged rainfall, exceeding the conditions documented in the Sanitary Survey upon which this Management Plan is based, the closure rules set forth above no longer apply. At the direction of CDPH/PSU, the grower will collect one water quality sample at the primary station. Fecal coliform results must be equal to or lower than 14 MPN/100mL for the growing area to be considered for reopening. If results for any sampling station are above the acceptable level, the grower will be instructed to resample. The grower is encouraged to collect samples following extreme rainfall events. CDPH will provide guidance on extreme event sampling.

3. Movement of Shellstock

The harvest of shellstock during a closure is prohibited. The NSSP Model Ordinance defines harvesting as the act of removing shellstock from growing waters and placing it on or in a manmade conveyance or other means of transport. There are three conditions outlined in this section when shellfish may be moved during a harvest closure solely for the purposes of sorting and culling prior to being returned to the growing area. Shellstock temporarily removed from the growing area for sorting or culling during a harvest closure may not be placed in wet storage and cannot be transported away from the bay or shoreline. These provisions are intended to assist the industry by allowing shellstock handling activities (e.g., sorting, culling) to be conducted during a closure while ensuring that NSSP patrol requirements can be met to prevent illegal harvesting. Failure to meet the shellstock movement requirements set forth in this Management Plan is a violation of the conditions of the Shellfish Growing Area Certificate issued by CDPH and could result in suspension or revocation of that certificate.

Rainfall closures are necessary for shellstock to depurate to acceptable levels after rainfall events. Closure times are based on pathogen reduction studies performed in the growing area and the time required for adequate depuration of contaminants. Shellstock removed from growing waters during closure periods shall have the number of hours and minutes that the shellstock is out of the water added onto its respective closure time before it can be harvested for market. All shellfish must be in water for the entire length of time that it would otherwise have been had it not been removed from the growing waters before the end of the rainfall closure.

There are three identified conditions in which shellstock may be temporarily removed from the growing waters during a closure. The following paragraphs describe the circumstances of each type of harvest during closure that may be allowed with prior approval:

Condition 1:

Shellstock is removed from the growing water and worked on on-site and then placed back in the growing area. It is NOT removed from the specific commercial shellfish lease/parcel.

Condition 2:

Shellstock is removed from the commercial shellfish grower's lease/parcel during a closure, transported off the lease/parcel to be worked on, and then returned to the original lease/parcel. This shellstock cannot be transported away from the bay or shoreline.

Condition 3:

Shellstock is harvested during a closure from one *Conditionally Approved* commercial shellfish grower's lease/parcel and placed into another *Conditionally Approved* lease/parcel, owned by the same commercial shellfish grower. Both parcels must be under the control and authority of the same commercial shellfish grower (i.e., product cannot be moved onto another commercial shellfish

grower's lease). *The cleansing time on the destination lease is defined by the longest rainfall closure period of either the source or destination lease.*

NOTE: In all cases shellstock shall not be placed in, or come in contact with, uncertified growing waters.

Standard Operating Procedures (SOPs) Required:

A grower who intends to move product during rainfall closures under any of the three conditions described above **must** have a Standard Operating Procedure (SOP) that has been approved by CDPH and is included in the current Management Plan for Shellfish Harvesting in Santa Barbara. The approved SOP serves as CDPH approval of the movement *procedures* proposed by the grower. Removing shellstock from growing waters during a harvest closure without an approved SOP is a violation of the Shellfish Growing Area Certificate and may result in the embargo of the shellstock, suspension or revocation of the certificate, and legal actions may be taken against the company as allowed by law.

The SOP shall describe how shellstock will be identified and tracked to ensure that product has had the required time in the water for proper cleansing. Shellstock moved during a closure must be labeled, or the receiving area labeled and demarcated, such that the shellstock can be distinguished to prevent comingling with other product. The SOP shall have an associated tracking form to document the shellstock movements made during a closure. A SOP template is provided in Appendix C. CDPH will approve SOPs that contain acceptable provisions for identifying, isolating and tracking product that has been moved during closures.

SOPs must contain the following information:

- a. What type of movement(s) is/are planned; Condition 1, 2 and/or 3; and a description of all movements that are planned.
- b. The leases or growing areas from which shellstock will be removed.
- c. The exact landing and sorting locations wherein shellstock may be sorted or culled.
- d. The leases or growing areas that shellstock will be returned to.
- e. Labeling procedures for each bag of shellstock moved, or labeling procedures for areas that will receive moved shellstock and a description of how the destination areas of returned shellstock will be demarcated.
- f. Explanation of record keeping, including an example of a tracking form to be used to document each shellstock movement on site, to track the movement of product, the duration of time to remain on the destination lease prior to harvest, and the actual harvest date and time.
- g. Persons responsible for overseeing and documenting shellstock movements.

Tracking forms associated with the SOP must list the following information for each movement that is planned:

- a. Type of movement made.
- b. Shellstock source location.
- c. Shellfish landing location - where it was worked on.
- d. Shellstock destination location.
- e. Lot number and species of shellstock moved.
- f. Amount of shellstock moved.
- g. Time and date that shellstock was removed from the growing waters.
- h. Time and date that shellstock was returned to growing waters.

Grower adherence to the procedures set forth in the SOP will be verified through growing area patrols and harvest audits. Commercial shellfish growers shall maintain a field log in the work area for documenting the current shellstock movement activities. This record shall be provided to the patrol officer upon request during a site inspection.

During closures due to biotoxins SBMC shall be allowed to move shellstock under condition 1 above without an SOP on file with the CDPH. Under the provisions of Section XIV SBMC will remain closed to harvest during a biotoxin closure pending laboratory results. The laboratory results are demonstrative of the actual toxins accumulated in the shellfish and therefore the shellfish do not require further depuration.

B. EMERGENCY CLOSURES: SEWAGE COLLECTION SYSTEM UPSETS

Accidental sewage releases from wastewater collection systems servicing the Santa Barbara area may adversely affect the water quality in shellfish growing areas. The potential for these sewage "upsets" to adversely impact shellfish growing waters is related to the estimated volume of the discharge, the location of the discharge with respect to the growing areas, the prevailing ocean current, and the timing of the discharge with respect to rainfall closures of the growing areas. Criteria for determining whether an emergency closure will be implemented as a result of a sewage spill and criteria for reopening growing areas are presented in Appendix D.

C. EMERGENCY CLOSURES: WWTP MALFUNCTIONS

The *Conditionally Approved* classification of this area is also dependent upon wastewater treatment plant performance. Harvesting of shellfish for human consumption would be determined in part by the performance of the wastewater treatment plants. Discharges of effluent that do not meet current standards shall cause closure of the commercial harvesting area until the impacts can be evaluated. In the event of a sewage spill, or malfunction of a wastewater treatment facility's disinfection process which results in a potential or actual discharge of inadequately treated effluent into the

Santa Barbara Channel, the responsible agency will notify the CCRWQCB, the Santa Barbara Mariculture Company, and CDPH/PSU. CDPH/PSU will then determine the status of the growing area and will notify the grower when the determination has been made. Harvesting shall not occur until after CDPH/PSU has evaluated the event and determined the required actions. Criteria for determining whether an emergency closure will be implemented as a result of a sewage spill and criteria for reopening growing areas are presented in Appendix D.

D. EMERGENCY CLOSURES: HAZARDOUS SUBSTANCE SPILLS

In the event of a reported hazardous substance spill that could impact a shellfish growing area, the California Emergency Management Agency (Cal-OES) is notified, who in turn will contact the CDPH Duty Officer (on call 24 hours a day). The CDPH Duty Officer will notify the CDPH/PSU supervisor or the next manager in the chain of command. Additional involved agencies will have their own reporting requirements.

Upon notification of a hazardous substance spill CDPH/PSU will determine the status of the growing area and will notify the grower if a closure is warranted. A harvest closure resulting from a hazardous substance spill shall remain in effect while CDPH/PSU evaluates the event and determines the required actions. See Section XI for reopening requirements.

E. OTHER EMERGENCY CLOSURES

Other emergency situations in which the discharge of a hazardous or deleterious substance to shellfish growing waters is presumed to be likely, but during which communications with CDPH/PSU may be compromised, such as after a natural or man-made disaster, will be evaluated by CDPH/PSU for possible closure of the growing areas.

F. NOTIFICATION PROCEDURES

CDPH/PSU will notify the grower whenever the rainfall threshold is exceeded and the growing area is closed. The grower shall acknowledge receipt of this notification within 24 hours. When determined, an estimated reopening time will be provided. The status of the growing area can be obtained by calling the 24-hour GIL at (510) 412-4644. Reopening requirements for rainfall closures are presented in Section XI and for sewage spill-related closures in Appendix D. The following notification procedures apply:

1. California Department of Public Health

a. CDPH is the agency responsible for making decisions regarding harvest closures and reopening of shellfish growing areas.

b. CDPH/PSU will maintain a telephone message recorder (the GIL) at the Richmond office, (510) 412-4644, to provide information about closures to commercial shellfish

harvesters during non-business hours. CDPH/PSU will update the recorded message as needed and will monitor the line at least twice each day for recorded messages from the harvesters.

c. If CDPH/PSU closes a shellfish growing area to commercial shellfish harvesting, CDPH/PSU will notify each affected certified harvester by telephone of that decision. When CDPH/PSU reopens a shellfish growing area to commercial shellfish harvesting, CDPH/PSU will notify each affected certified harvester by telephone of that decision. In the case of rainfall closures there are times when storm activities can interfere with the ability of CDPH/PSU to obtain current rainfall information. Beyond normal business hours and weekends CDPH/PSU may not be able to update the closure or reopening information immediately. If a harvester has any question or uncertainty regarding a closure or a reopening, they shall contact the GIL ((510) 412-4644) for guidance prior to resuming any harvest activities. If additional rainfall has occurred since the last GIL update, or if the grower is unsure about the harvest status of the growing area, they shall consider the area closed to harvest and contact the RDO at (510) 412-4638 for more information (on weekends and off-hours, leave a message on the GIL). The grower should also contact their shellfish growing area specialist during normal business hours for more information. If the grower harvests before obtaining current information on the growing area status, and the growing area is closed, the grower shall be responsible to return all harvested shellfish to the same location it was harvested from.

d. CDPH/PSU will maintain a current contact listing of CDPH/PSU personnel and certified commercial growers and provide this listing to the WWTPs, the CCRWQCB, and other applicable parties.

e. Procedures for rainfall closures.

(1) CDPH/PSU will establish a duty roster of staff specialists designated to monitor rainfall at *Conditionally Approved* growing areas, including Santa Barbara. A staff specialist will be designated to be on call for duty as an RDO for every day of the year, including weekends and holidays.

(2) The RDO will monitor weather forecasts and reports to determine whether significant rainfall is predicted or has occurred at the *Conditionally Approved* growing areas. If so, the RDO will contact designated rain gauge stations as needed to obtain current rainfall measurements to determine when the conditions requiring a rainfall closure are met. The designated rain gauge station for rainfall closures for Santa Barbara's conditionally approved growing areas is located at the Santa Barbara Airport in Goleta and can be accessed at www.crh.noaa.gov/data/obhistory/KSBA.html

(3) When the RDO determines that conditions have occurred that require a shellfish harvest closure, he/she will notify each commercial harvester immediately by telephone that the area is closed to harvesting and will inform them, if known, when it will reopen.

(4) The RDO will maintain records of rainfall measurements and harvest closure notifications.

f. Procedures for emergency closures:

(1) Upon notification of any pollution event that might be cause for an emergency closure of the Santa Barbara growing area, CDPH/PSU will consult with the responsible agency to consider the extent and severity of the pollution. If an emergency closure is needed to protect sport shellfish harvesters, CDPH/PSU will consult with CDFW and the SBCEHS to determine the location and scope of sport shellfish closures. Criteria for determining whether an emergency closure will be implemented as a result of a sewage spill and criteria for reopening growing areas are described in Appendix D.

(2) CDPH/PSU will notify the harvesters by telephone when it declares an emergency closure. When required under H & S § 112160, written confirmation will be sent to the commercial harvesters and copies will be sent to FDB, CDFW, CCRWQCB, the FDA Regional Shellfish Specialist, and any other interested persons. Emergency closure letters shall contain the information required in H & S § 112160(d), so as to afford the recipients reasonable opportunity to submit data, views, or arguments.

(3) As soon as reasonably possible after declaring an emergency closure, CDPH/PSU will initiate an investigation of the effects of the pollution event on water and shellfish meat quality, including such factors as the volume, nature, and location of the discharge, hydrographic factors, and sampling data.

(4) CDPH/PSU will reopen the Lease M-653-02 growing area as soon as it determines that shellfish harvested from the area do not exceed NSSP standards or otherwise pose a public health risk.

(5) CDPH/PSU will notify the commercial harvesters when it decides to reopen the growing area after a closure. When required under H & S § 112160, written confirmation will be mailed to the harvester within five (5) working days after the telephone notification, and copies will be sent to FDB, CDFW, RWCQB, the FDA Regional Shellfish Specialist, and other interested parties.

(6) CDPH/PSU will provide to WWTPs, the CCRWQCB, and to the SBCEHS, a contact list of the certified shellfish growers and CDPH/PSU personnel to be called as required in this document. This listing will be updated as needed.

2. Central Coast Regional Water Quality Control Board

The CCRWQCB or its designee will notify CDPH/PSU as soon as possible of any pollution event that may adversely affect water and shellfish quality in the Santa Barbara Channel. Examples of such events are the following: a sewage spill; collection system bypass; malfunction of a WWTP, WWRF or any discharge of a hazardous chemical, pesticide, or petroleum product. The CCRWQCB will include the following

mandatory notifications in its draft Waste Discharge Requirements issued to the WWTPs listed in Table 1:

The permitted discharger will notify CDPH/PSU, and SBMC immediately; and Santa Barbara County Environmental Health Services (SBCEHS) as soon as possible of any sewage spill, collection system bypass, or malfunction of a WWTP or WWRF which results in a potential or actual discharge of raw or incompletely treated sewage which may adversely affect water and shellfish quality in Santa Barbara Channel; and;

The discharger will develop and maintain written procedures incorporating the notification requirement described above, to post the procedures at the facility, and to provide a copy of the current notification procedures to CCRWQCB, CDPH/PSU, and SBCEHS.

3. Santa Barbara County Environmental Health Services

SBCEHS will notify CDPH/PSU as soon as possible of any discharge of sewage into the Santa Barbara Channel, directly or indirectly, when they become aware that such an event has occurred. SBCEHS monitors the water quality at public beaches for bacterial concentrations as required by H & S § 115880 (AB 411) on a weekly basis and forwards the results to CDPH/PSU. If the water adjacent to a public beach fails to meet established bacterial standards, SBCEHS will post signs alerting the public that the water does not meet health standards. The SBCEHS weekly report includes information on beach postings and closures.

4. City of Santa Barbara's El Estero Wastewater Treatment Plant and Montecito, Carpinteria, Summerland, and Goleta Sanitary Districts

a. In the event of a sewage spill, or malfunction of a wastewater treatment facility's disinfection process which results in a potential or actual discharge of inadequately treated effluent into the Santa Barbara Channel, the responsible agency will notify CCRWQCB, the Santa Barbara Mariculture Company, and CDPH/PSU as soon as possible after becoming aware of the event. All monitoring data related to the event shall be provided to CDPH/PSU. Note: the specific notification procedure has not been formalized at this time with Goleta, Montecito, Summerland and Carpinteria Sanitary Districts. See paragraph IX.G below for the interim procedure.

b. The agencies named above will develop and maintain written procedures incorporating the notification requirement, post the procedures at their facilities, and provide a copy of the current procedures document to CCRWQCB and CDPH/PSU.

c. The MOU between the City of Santa Barbara and CDPH establishes the notification procedure between the El Estero WWTP and the commercial shellfish growers in the area. CDPH does not have a similar agreement with Goleta, Montecito, Summerland, or Carpinteria, nor do their WDR/MRPs meet the notification requirements of this Management Plan. The CCRWQCB has agreed to include a notification procedure in each WDR/MRP. The growers shall contact the treatment plants on each harvest day

as specified in section X.G. During this interim period, CDPH/PSU has requested the General Managers at the four WWTPs to notify CDPH/PSU and each certified commercial shellfish grower in the region as soon as possible of any effluent discharge or any malfunction of the wastewater treatment facility's disinfection process which results in a potential or actual discharge of inadequately treated effluent into the Santa Barbara Channel.

5. Impact Assessment

The responsible party shall provide sufficient information to CDPH/PSU such that the magnitude of the impact to the growing area can be assessed. This information should include, but not be limited to, the location of the discharge, a detailed characterization of the discharge when petrochemicals or other hazardous materials are involved, the rate and volume of the discharge, the point of discharge into the Santa Barbara Channel, and the identification and flow rate of any receiving waters, when appropriate. It is recommended that water samples be collected for the appropriate analysis from the area of impact, as well as from nearby sites outside the zone of impact. Under some circumstances it may also be necessary to analyze shellfish tissue samples to assess the impact to the product in the growing areas.

X. CERTIFIED SHELLFISH HARVESTER RESPONSIBILITIES

This section contains the major responsibilities of the certified shellfish harvester; additional responsibilities are included elsewhere in the Management Plan.

A. SEED

The certified shellfish grower shall obtain approval from CDPH/PSU of all sources of seed shellstock, in accordance with the NSSP.

B. HARVEST CLOSURE

The Santa Barbara Mariculture Company shall cease harvesting operations when notified by CDPH/PSU of a harvest closure or when otherwise required by the closure rules and procedures set forth in this Management Plan. Compliance with this Management Plan is mandatory as a condition of the Shellfish Growing Area Certificate issued by CDPH/PSU. Any violation of a harvest closure declared pursuant to this Management Plan may be cause for suspension or revocation of a certificate or for other disciplinary actions as provided by law. If the harvester has any questions or uncertainties regarding a rainfall closure, he should contact CDPH/PSU for guidance or clarification prior to commencing harvesting or marketing operations. Grower procedures for closures associated with sewage spills are described in greater detail in Appendix D.

1. Business Hours

During normal State business hours, the harvester should call the CDPH/PSU field staff at (510) 412-4638. If a shellfish specialist cannot be reached the harvester should try alternate contacts on the most current CDPH staff call down list (Appendix A).

2. Non-Business Hours

During non-business hours, the harvester should call the CDPH/PSU commercial shellfish GIL. After listening to the recorded message, if more information is needed, the harvester should leave a message identifying the caller and providing the telephone number for a return call.

C. RECEIVING AND ACKNOWLEDGING NOTIFICATIONS

The Santa Barbara Mariculture Company shall maintain a 24-hour telephone line with an answering service or recorder and provide the telephone number to CDPH/PSU. If notified of a closure by CDPH/PSU via the telephone message recorder, the harvester shall acknowledge receipt of that message within 24 hours by return call to the CDPH/PSU shellfish specialist at (510) 412-4638 or the CDPH/PSU shellfish GIL at (510) 412-4644. If a recorder answers these lines, after the recorded message the commercial harvester shall leave a message acknowledging receipt of the closure notification.

D. REPORTS OF SEWAGE OR HAZARDOUS SUBSTANCE SPILLS

If the Santa Barbara Mariculture Company has knowledge of any potential sewage or hazardous substance spill which may adversely affect water and shellfish quality in the Santa Barbara lease area, or of any suspected illness resulting from the consumption of shellfish harvested from any Santa Barbara area, the commercial harvester shall close the growing area to harvesting and shall notify CDPH/PSU immediately by telephone.

1. Business Hours

During normal business hours the commercial grower shall contact CDPH/PSU staff using the call-down list provided in Appendix A.

2. Non-Business Hours

During non-business hours, or if CDPH/PSU staff cannot be reached, the grower shall call the California Emergency Management Agency in Sacramento at (800) 852-7550 or (916) 262-1621. Provide your name, firm, and telephone number, the reason for the call, and ask to be contacted by a staff person from the CDPH/PSU. The grower should also leave a message on the GIL at (510) 412-4644 regarding the details of the reported spill.

E. WASTEWATER TREATMENT PLANT NOTIFICATION

In the event of a malfunction of a wastewater treatment facility's disinfection process that results in a potential or actual discharge of inadequately treated effluent into the Santa Barbara Channel, the responsible agency will notify the harvester as soon as possible. CDPH/PSU will determine the status of the growing area and will notify the grower when the determination has been made. Harvesting shall not occur until after CDPH/PSU has evaluated the event and determined the required actions. If the harvester has been notified by a WWTP, the CCRWQCB, SBCEHS or any other reliable source of a sewage or hazardous substance spill which may adversely affect water and shellfish quality in the Santa Barbara Channel, and if the harvester cannot contact CDPH/PSU immediately, he shall consider the growing area closed and shall suspend harvesting operations immediately, and shall not resume such operations until approval to do so has been received from CDPH/PSU.

F. RECORD KEEPING

The Santa Barbara Mariculture Company shall keep records showing the dates and times of all harvest closures, re-openings, and harvest operations, including product movement during closures as discussed in Section IX.A.3. These records shall be kept on a form similar to that shown in Appendix E. Completed forms shall be maintained in a file at the harvester's place of business for no less than two years. One copy of the completed form shall be submitted to the CDPH/PSU Richmond office upon request. Since rainfall closures are an important management tool for the growing area, the grower should call the GIL (510) 412-4644 prior to harvesting during any rainfall activity. Storm activities can interfere with the Department's ability to obtain current rainfall information. If the grower is still unsure as to the status of the growing area, he should contact the RDO at (510) 412-4638 to determine if the GIL is current, or, during off-hours or on weekends, leave a message on the GIL.

G. AUDITS

The grower shall comply with all field audits and harvest log reviews. The grower will accommodate CDPH in all aspects of the field audits including but not limited to: scheduling the audit, providing safe boat support to the growing area, and collecting samples at primary sites. Failure to comply with the audits could result in suspension or revocation of the shellfish Growing Area Certificate issued by CDPH/PSU.

H. LIVE-ABOARDS

SBMC shall immediately report the presence of any moored boat that is located within the safe distance allowed in Figure 2 to the growing area to the CDPH/PSU shellfish specialist at the Richmond office.

I. WILDLIFE

Fecal contamination from wildlife to a shellfish growing area can be erratic yet significant. If the CDPH/PSU has determined that wildlife are significantly impairing the water quality of shellfish growing waters then the affected commercial shellfish grower must have on file with CDPH/PSU an approved *Wildlife Management Plan* to prevent product contamination detailing methods used to mitigate fecal contamination of the product caused by this wildlife. The plan shall include product descriptions, areas designated for product grow-out, transfer, and harvest, and specific procedures and time frames for purposes of mitigating wildlife impact on marketable product.

It is the grower's responsibility to consult with the appropriate agencies to determine which measures are acceptable and legal in preventing wildlife from contaminating shellfish. All growers who are required by the CDPH/PSU to have a *Wildlife Management Plan* are responsible for obtaining any state or federal permits that may be required to prevent wildlife from contaminating shellfish. The plan must have approval by CDPH/PSU prior to implementation and shall be revised yearly or as procedures change.

This *Wildlife Management Plan* is part of a pilot program intended to mitigate the impact of marine mammals and birds to shellfish and growing waters.

XI. REOPENING PROCEDURES

A. RAINFALL CLOSURES

Prior to reopening following a closure due to rainfall, the grower shall contact the GIL (510 412-4644) to determine if any changes have occurred in the reopening times for each growing area. If there is any uncertainty about the message or if no message is found on the GIL the grower shall contact the RDO at (510) 412-4638. The grower is advised that reopening dates and times are subject to change. The grower shall recheck the GIL message prior to resuming harvest operations, and shall keep in mind that storm activities can interfere with the ability of CDPH/PSU to obtain current rainfall information. If the harvester has any question or uncertainty regarding a closure or a reopening, he should contact CDPH/PSU for guidance prior to resuming any harvest activities. One water sample taken a minimum of 24 hours after the end of the rainfall event (as determined by CDPH/PSU) shall be collected at the primary station and analyzed for fecal coliform. The sample results shall indicate a fecal coliform level of not greater than 14 MPN/100 mL before reopening can occur. (Once sufficient rainfall data has been obtained, CDPH will consider removing the requirement for water quality verification).

B. SEASONAL CLOSURES

There are no seasonal closures presently identified for this growing area.

C. SEWAGE OR HAZARDOUS SUBSTANCE SPILLS

1. Investigation

As soon as reasonably possible after declaring an emergency closure, CDPH/PSU will initiate an investigation of the effects of the pollution event on water and shellfish meat quality, including such factors as the volume, nature, and location of the discharge, hydrographic factors, and sampling data. Criteria for determining whether an emergency closure will be implemented as a result of a sewage spill are described in Appendix D.

2. Harvest Reopening

Criteria for reopening growing areas after a sewage spill are described in Appendix D. Due to the variable and unpredictable nature of hazardous material spills, reopening criteria for these events will be determined on a case by case basis.

3. Notification

CDPH/PSU will notify the grower and CDFW when it decides to reopen the growing area after an emergency closure. When required under H & S § 112160, written confirmation will be mailed to the harvester within five (5) working days after the telephone notification, and copies will be sent to FDB, CDFW, RWCQB, the FDA Regional Shellfish Specialist, and other interested parties.

D. REOPENING WHEN SAMPLING IS REQUIRED

Growing areas may be closed for extended periods of time due to extreme environmental conditions, samples containing elevated fecal coliform concentrations, or sewage spills. Water quality sampling may be required before reopening during these circumstances to demonstrate that water quality has returned to acceptable levels. Growing areas that are closed and require sampling to reopen will be reopened effective the date and time that PSU staff receive and have reviewed acceptable results from the laboratory.

Criteria for reopening growing areas following extreme environmental conditions are presented in Section IX.A.2 of this Management Plan, criteria for reopening following elevated FC concentrations are presented in Section XIII.D and criteria for sewage spill closures are presented in Appendix D.

XII. PREVENTION OF ILLEGAL HARVESTING (PATROL)

A. ILLEGAL HARVESTING OF SHELLFISH

During harvest closures implemented by CDPH, CDPH/PSU staff coordinates regular patrols of shellfish growing areas to prevent illegal harvesting activity on the part of growers or unauthorized individuals. In addition to this Management Plan, three other documents describe the activities of CDPH/PSU (including that part of the program

administered by FDB) and CDFW in preventing illegal harvesting of shellfish, preventing the movement of contaminated and/or toxic shellfish into avenues of commerce, and for ensuring the proper handling and identification of shellfish after harvest. These documents are: (1) the MOU between CDFW and CDPH, signed August 1991; (2) the CDPH "Patrol Policy for Commercial Shellfishing in California"; and (3) the CDPH "Contingency Plan for Marine Biotoxins in California Shellfish".

B. DEPARTMENT OF FISH AND WILDLIFE, WILDLIFE PROTECTION DIVISION

CDFW's Wildlife Protection Division field office for the Santa Barbara area is headquartered at 1933 Cliff Drive, Suite 9, Santa Barbara, CA. CDFW maintains patrol of areas with significant naturally occurring shellfish resources for illegal commercial harvesting. CDFW patrol activities may occur at any time. CDFW officers have a broad range of enforcement duties, shellfish being only one part of their responsibilities.

The provisions of this Management Plan as it applies to the obligations of the commercial shellfish harvester are enforced by CDPH/PSU, not CDFW. CDFW agrees to assist CDPH/PSU, when specifically requested by CDPH/PSU, by redirecting some of its patrol effort to monitor commercial harvesters for compliance with harvest closures. If CDFW patrol personnel find or suspect any commercial shellfish harvesting in violation of a harvest closure established pursuant to this plan, CDFW will report their finding to CDPH/PSU.

C. ILLEGAL MARKETING

CDFW also makes periodic checks for the illegal marketing of uncertified shellfish by means of market and restaurant inspections. This activity also is carried out by local environmental health agencies. Shellfish in the marketplace are inspected for proper identification and records of purchase. The SBCEHS or the State CDPH/FDB can confiscate and destroy any shellfish that lack proper identification or have been subject to improper handling or storage. CDFW can take action on shellfish that lack proper identification.

D. HARVESTER COMPLIANCE WITH CLOSURES

(1) CDPH/PSU (or CDFW patrol personnel, or FDB inspectors, upon request from CDPH/PSU) will field check the harvest area to look for harvesting activity during closure periods.

(2) CDPH/PSU will review harvester records of closure and harvesting dates.

(3) CDPH/PSU will spot check by telephone to ascertain whether harvester is conducting operations during closed periods.

(4) CDPH/PSU will maintain records of all compliance monitoring activities and findings.

XIII. WATER QUALITY MONITORING

The Santa Barbara Mariculture Company is responsible for providing water quality monitoring data from its growing area, as required by the NSSP Model Ordinance, Chapter IV (2013), with coordination and oversight from the CDPH/PSU. The grower submits samples according to a sampling plan approved by CDPH/PSU. Failure to maintain the required sampling schedule is a violation of the NSSP requirements and may result in reclassification of the growing area to *Prohibited* as well as disciplinary actions including, but not limited to, the revocation and or suspension of the growing area certificate as provided for by law. The following is a summary of the requirements associated with routine monitoring of shellfish growing waters.

A. WATER SAMPLING REQUIREMENTS

Water samples are collected at the primary site on the northeast corner of the lease (Figure 1) at least monthly during periods when the growing area is open for harvesting. Sampling shall be accomplished using the systematic random sampling protocol in accordance the current Sampling Plan for Water Quality Monitoring. The grower shall also consider any adverse conditions when determining the proper time of day to collect samples (e.g., ebb tide if this increases the potential of capturing water quality impacts from potential pollution sources). If a sampling date occurs during a rainfall closure, the sampling shall be conducted on the first open day (i.e., the day of reopening). The samples shall be tested at a CDPH/PSU approved laboratory for fecal coliform assay for water and shellfish, and the results sent directly to CDPH/PSU.

If a sampling date occurs during a closure, the sampling shall be conducted on the first open day (i.e., the day of reopening). In order to obtain data on rainfall-related impacts to water quality, additional samples should be collected whenever possible during periods of adverse pollution conditions, such as immediately following rainstorms or on the first days of reopening following a closure.

All compliance sampling is to be conducted by a commercial shellfish grower staff member that has been trained by the CDPH/PSU. If sampling has not been conducted by a CDPH trained staff member then the sampling results will be rejected by the CDPH and the commercial shellfish grower will be required to resample with trained staff. CDPH will evaluate all certified samplers annually and provide training for compliance sample collection upon request from the commercial shellfish grower.

The grower shall notify CDPH/PSU in writing prior to the scheduled sampling date when sampling will not occur on the scheduled date (and the area is in the open status) and shall request an alternative date. A reason for the deviation from the Sampling Plan schedule must be provided. If CDPH/PSU approves the request, a new date will be assigned. If CDPH/PSU does not approve the request, the grower will be required to sample on the original date specified in the schedule. Samples collected on incorrect dates will not be identified as a compliance samples, and will not be used in the calculations for verifying classification of the area.

B. TRANSPORTATION

The grower provides his own boat and all necessary sampling equipment for routine water quality monitoring. Boat trips for CDPH/PSU staff may be scheduled with the grower for additional survey work, special studies, and to audit water sampling technique by the growers. Growers shall be responsible for transporting samples to the certified laboratory and meeting proper holding times and temperature limitations as detailed in the sampling plans.

C. LABORATORY

The San Luis Obispo County Public Health Laboratory in San Luis Obispo a State-certified laboratory in accordance with the State Water Resources Control Board Environmental Laboratory Accreditation Program (SWRCB/ELAP), or any other certified shellfish laboratory, shall analyze samples taken by the grower. Analytical results are to be transmitted directly from the laboratory to CDPH/PSU. The CDPH Microbial Diseases Laboratory in Richmond may analyze supplemental samples submitted under the direction and coordination of CDPH/PSU.

D. WATER SAMPLES EXCEEDING NSSP CRITERIA

Water sample results that exceed NSSP criteria may indicate a public health threat, and must be responded to immediately. A two-tiered response protocol is described in the following paragraphs. *In any case when a sample exceeding NSSP criteria results in a growing area closure, the closure shall be effective at the date and time the sample was collected. Reopening following satisfactory sample results shall be effective at the date and time that sample results are received from the laboratory.*

Any sample collected from an open area that contains fecal coliform concentrations *greater than 43 MPN/100 mL but less than 107 MPN/100 mL¹* must be re-sampled immediately at the certified grower's expense. Re-sampling must be conducted within 24-hours of notification of initial sample results. If re-sampling is not conducted within the specified time frame, the portion of the lease or growing area represented by the sampling station in question shall be closed for harvest until re-sampling is conducted and results demonstrate that fecal coliform concentrations have returned to acceptable levels. The commercial shellfish grower should refrain from harvesting from the area represented by the sampling station until re-sample results are received and are acceptable relative to commercial growing areas standards.

If re-sampling results are greater than 43 MPN/100 mL fecal coliform, the represented portion of the lease or growing area shall immediately be closed to harvest. The area will be considered for reopening when further re-sampling produces a result below 14 MPN/100 mL fecal coliform. In certain cases, CDPH staff may consider reopening based on a re-sample result equal to or below 43 MPN/100 mL *combined with a*

¹ The 99th percentile of a population with a geometric mean of 14 MPN/100 mL and a 90th percentile of 43 MPN/100 mL.

declining trend in fecal coliform levels at the compliance sampling station and surrounding areas. In order to establish fecal coliform trends in surrounding areas it is recommended that re-sampling be conducted both at the primary compliance station(s) and other surrounding water quality stations. CDPH will advise the grower as to which water quality stations should be sampled.

A sample collected from an open area that contains *greater than or equal to 107 MPN/100 mL* fecal coliform shall result in immediate closure of the portion of the growing area represented by the sampling station from which the elevated sample was collected. The area will be considered for reopening when re-sampling produces a result equal to or below 14 MPN/100 mL fecal coliform or a result equal to or below 43 MPN/100 mL *combined with a declining trend in fecal coliform levels at the compliance sampling station and surrounding areas.* Reopening criteria are as described above.

If re-sampling continues to yield elevated fecal coliform levels CDPH/PSU will conduct an investigation, which may include additional sampling, to confirm the elevated indicator levels and determine the source, and will notify all relevant regulatory agencies. If a source is identified, CDPH/PSU will refer the matter to the appropriate regulatory agency for corrective action. The commercial shellfish growing area will remain closed until the pollution problem is identified and remediated, and the commercial shellfish growing area is determined to be free of pathogens and to meet NSSP standards, or until the area is correctly reclassified by CDPH/PSU. CDPH will analyze the most recent water quality data and determine if the current shellfish growing area classification is correct or if the commercial growing area needs to be closed or reclassified.

XIV. MARINE BIOTOXIN MONITORING

A. CONDITIONS AND PROCEDURES

The Santa Barbara Mariculture Company shall comply with the following conditions and procedures for management of marine biotoxins. All samples submitted to the CDPH laboratory should be accompanied by a CDPH sample submission sheet. Biotoxin sampling described below shall be conducted during, and for at least two weeks prior to any harvest activities. If a sample cannot be collected the commercial shellfish grower must notify the CDPH.

Due to the uncertainty involved with domoic acid and PSP toxicity, special management protocols were developed (Tables 3 and 4) that detail response activities for different concentrations of each biotoxin. The protocols detail the specific requirements for maximum time between sampling and harvest. This protocol may be modified as experience with domoic acid and PSP toxicity is gained. The **Biotoxin Hotline phone number is 1-800-553-4133.**

When there is a pattern of positive field tests for domoic acid and when lab resources are readily available, CDPH may permit SBMC to discontinue field testing for this toxin at the company's discretion. Testing shall resume when the event has subsided and

there are two consecutive non-detect domoic results or when the grower is instructed by CDPH.

1. Paralytic Shellfish Poisoning Assays.

SBMC shall submit at least weekly samples of all harvested species to a lab certified by the SWRCB/ELAP for paralytic shellfish poisoning (PSP) assay. A sample of each species shall be collected at the current depth of harvest. Samples shall be collected as closely as possible to time of harvest. If the CDPH laboratory is available, all samples shall arrive at the laboratory by Tuesday or Wednesday morning but no later than Thursday morning. PSP samples may be combined with domoic acid samples if both analyses are to be conducted by CDPH. More frequent sampling may be required by CDPH to adequately track an impending or existing bloom.

2. Phytoplankton Observations.

It is strongly recommended that SBMC collect at least weekly samples of phytoplankton for the early detection of toxic blooms. CDPH will provide training in the sampling and field identification of the toxic species and will also provide quality control by examining samples and comparing observations with the company.

3. Domoic Acid Analysis.

a. SBMC shall submit at least weekly samples of all harvested species to a lab certified by the SWRCB/ELAP for domoic acid analysis. A sample of each species shall be collected at the current depth of harvest. Samples shall be collected as closely as possible to the time of harvest. If the CDPH laboratory is available, all samples shall arrive at the laboratory by Tuesday or Wednesday morning but no later than Thursday morning. More frequent sampling may be required by CDPH to adequately track an impending or existing bloom.

b. SBMC shall collect a sample of each harvest lot and immediately test it for the presence of domoic acid using a commercially-available diagnostic kit. SBMC shall follow the protocol provided by CDPH (Appendix G). Assay results and other required information shall be recorded on page 2 of the sample submission form provided. The test strip shall be labeled as described in the assay protocol (Appendix G). A digital photograph of the developed test strip or a brief report of the assay result shall be emailed to gregg.langlois@cdph.ca.gov and joe.christen@cdph.ca.gov on the day of the test. Test strips shall be shipped to CDPH with the remaining shellfish sample to the address provided on the sample submission form.

When there is a pattern of persistent positive field tests for domoic acid and when lab resources are sufficient to provide the required laboratory support, CDPH may allow the suspension of qualitative field testing while laboratory results continue to be positive for domoic acid. Under these circumstances the field testing is redundant and quantitative analytical results are required for determining the appropriate harvest controls. When the event is over CDPH will instruct the company to resume field testing to ensure early

detection of a subsequent event. This decision will be based on a pattern of low or nondetectable toxin levels, indicating the end of the event and the termination of any harvest controls.

4. Field Sampling Protocol

SBMC shall follow the field sampling protocol for marine biotoxins provided by CDPH for sample collection, preparation, and submission (Appendix G).

5. Additional Sampling

SBMC shall increase the sampling frequency, expand sampling to include any other commercial shellfish species designated in the Shellfish Growing Area Certificate, and/or cease harvesting as directed by CDPH.

B. CLOSURE CRITERIA

When a sample exceeds the biotoxin alert level, the growing area shall be closed immediately, effective on the date and time the sample was collected. FDB will be notified and will be responsible for decisions regarding product recall or destruction.

1. Domoic Acid Alert Level

In compliance with the NSSP Model Ordinance, the alert level for domoic acid is reached when the concentration of the toxin in shellfish meat equals or exceeds 20 micrograms per gram of tissue (i.e., 20 parts per million [ppm]).

2. Paralytic Shellfish Poisoning Alert Level

In compliance with the NSSP Model Ordinance, the alert level for PSP toxin is reached when the concentration of the toxin in shellfish meat equals or exceeds 80 micrograms per 100 grams of tissue.

3. Samples Exceeding the Alert Level

A biotoxin concentration at or above the respective alert level in one or more samples of commercial product in the growing area prior to harvest, or in commercial channels after harvest, will trigger an immediate closure of the growing area until follow-up sampling confirms that the toxin has returned to safe levels as described in Section G below, and in Tables 3 and 4. If notified of a biotoxin-related closure or harvest restriction by CDPH/PSU via telephone message recorder, the harvester shall acknowledge receipt of the message within 24-hours by return call to the CDPH/PSU shellfish specialist at (510) 412-4638, the unit supervisor at (510) 412-4635, or the CDPH/PSU shellfish growers information line (GIL) at (510) 412-4644.

4. Failure to Submit Required Samples

It is the responsibility of SBMC to collect and ship the required samples to a certified laboratory for biotoxin analysis. Failure to submit the required samples or inability of the analytical laboratory to provide results in a timely manner may result in an immediate harvest closure. CDPH will notify FDB, who will determine if a product recall is warranted.

C. RESTRICTED HARVEST CRITERIA

The special management protocols in Tables 3 and 4 outline multiple alert stages for concentrations of biotoxins below the closure alert level. The tables identify restricted harvest criteria and sampling actions for each stage of toxin concentration. When there is an increase in alert stage, the increase will be effective on the date and time that samples are collected. Alert stages below the closure alert level will be decreased effective on the sampling date and time after the sample results are received from the laboratory. To be considered for a decrease in alert stage, successive samples collected at least three (3) days apart (i.e., 72 hours) must meet the toxin level requirements for that stage.

D. SIZE OF CLOSED AREA

The initial harvest closure or implementation of harvest restrictions will include the entirety of the certified areas within the SBMC's lease, unless otherwise determined in a signed biotoxin management agreement. In reopening any commercial area, or any part of that area located within two miles by water of any site where toxin in a shellfish sample was detected above the alert level, the criteria in section G apply.

E. SPECIES RESTRICTIONS

A closure or harvest restriction of a commercial growing area may be limited to the shellfish species determined to have reached the alert level, or it may include all species in the growing area.

F. SAMPLING DURING A MARINE BIOTOXIN CLOSURE OR HARVEST RESTRICTION

Follow-up sampling will be continued throughout a closure or harvest restriction. All commercially harvestable shellfish species in the growing area will be sampled unless otherwise specified by CDPH. CDPH will determine sampling sites and times. Sites will be selected so that no part of any certified growing area is more than two miles by water from a sampling site for the species of shellfish harvested in that growing area.

G. REOPENING CRITERIA

Prior to being considered for reopening from a biotoxin closure, The Santa Barbara Mariculture Company shall collect successive samples at least three (3) days apart (i.e., 72 hours) that are found to be below the federal alert level for the toxin of concern.

Reopening shall be contingent upon these sampling results and downward trends in biotoxin levels in the surrounding area. A reopened area is still subject to the harvest restrictions set forth in Tables 3 and 4. Reopening shall be effective on the date and time that sample results are received from the laboratory.

Harvesting during a growing area closure by a certified commercial grower is a serious violation and may result in suspension or revocation of their growing area certificate.

XV. GROWING AREA REEVALUATION

CDPH/PSU will review and reevaluate water quality and other sanitary survey data at least annually, in accordance with procedures set forth in the Model Ordinance, Chapter IV (2013), to confirm the classification of the growing area and to determine if changes are needed in the closure rules. At least once a year, CDPH/PSU will conduct an on-site audit to determine grower compliance with the water quality sampling plan. The findings will be presented in an annual growing area sanitary survey update report.

When a growing area fails to meet the water quality standards for its classification, the NSSP requires that if the annual reevaluation determined that conditions have changed based on the information and data collected during the annual review and that the growing area classification is incorrect, immediate action shall be initiated to reclassify the area. If determined that an emergency condition or situation exists, then the growing area will be immediately (within 24 hours) placed in the closed status.

XVI. AGREEMENT OF INVOLVED PARTIES

The NSSP Model Ordinance, Chapter IV (2013) section @.03 C.4(a), requires that "The Management Plan shall be developed by the authority, in coordination with: the local shellfish industry, the individuals responsible for the operation of any wastewater treatment plants involved and any local or State agencies." In addition, NSSP Model Ordinance, Chapter IV (2013) section @.03 C.4(b) states "Failure of any one party to agree shall constitute sufficient justification to deny creation of a Conditionally Approved area." This Management Plan is in effect as long as the area remains certified and may be modified when conditions warrant it, with the concurrence of the involved parties. (The Sanitary Survey Report is updated annually; any significant changes in this report will necessitate a revision to the Management Plan).

A. PUBLIC AGENCIES

Authorized persons from the following public agencies are requested to review this Management Plan and to sign and return a statement of agreement provided in Appendix H, which states that "The undersigned has read and understands the purpose of the *Conditionally Approved* classification of the commercial shellfish growing area at the Santa Barbara Lease M-653-02 Area and the conditions of its Management Plan, dated _____, and agrees to comply with the conditions and procedures set forth in the Management Plan.

1. California Department of Fish and Wildlife, Wildlife Protection Division
2. California Regional Water Quality Control Board, Central Coast Region
3. Santa Barbara County Environmental Health Services

B. PERMITTED FACILITIES

Authorized persons in the following agencies are requested to review this plan and to sign and return a statement of agreement provided in Appendix H, which states that "The undersigned has read and understands the purpose of the '*Conditionally Approved*' classification of the commercial shellfish growing area at the Santa Barbara Lease M-653-02 Area and the conditions of its Management Plan, dated _____, and agrees to comply with the conditions and procedures set forth in the Management Plan."

1. City of Santa Barbara Sanitary District (alternate agreement provided due to MOU)
2. Montecito Sanitary District
3. Carpinteria Sanitary District
4. Summerland Sanitary District
5. Goleta Sanitary District

C. COMMERCIAL SHELLFISH GROWER

Compliance with this Management Plan is mandatory for the commercial shellfish grower as a condition of their Shellfish Growing Area Certificate issued by CDPH/PSU. Noncompliance may result in suspension or revocation of the certificate. The Santa Barbara Mariculture Company is requested to review this document and to sign and return the statement provided in Appendix H, which states that "The undersigned has read and understands the purpose of the '*Conditionally Approved*' classification of the commercial shellfish growing area at the Santa Barbara Lease M-653-02 Area and the conditions of its Management Plan, dated _____, and understands that compliance with the conditions and procedures set forth in the Management Plan is mandatory as a condition of Shellfish Growing Area Certificate issued by the California Department of Public Health."

D. FORWARDING OF SIGNED STATEMENTS

Signed statements shall be mailed to: Environmental Management Branch
California Department of Public Health
850 Marina Bay Parkway, #G165
Richmond, CA 94804

XVII. SUMMARY OF AGREEMENTS

A. CALIFORNIA DEPARTMENT OF FISH AND WILDLIFE

Upon request from CDPH/PSU, to field check commercial shellfish growing areas during closed periods to monitor for illegal harvesting activity, and to report compliance monitoring activities and findings to CDPH/PSU.

B. CALIFORNIA REGIONAL WATER QUALITY CONTROL BOARD, CENTRAL COAST REGION

1. Notification

To notify, or to require designated persons or agencies to notify, CDPH/PSU of any pollution events, as soon as they become aware of discharges which may pose a threat or adversely affect water quality in the Santa Barbara coastal area.

2. Performance Standards

To include in the Waste Discharge Requirements or Monitoring and Reporting Program for all wastewater treatment plants whose wastes discharge into the Santa Barbara Channel (including the City of Santa Barbara's El Estero Wastewater Treatment Plant, and the Montecito, Goleta, Summerland, and Carpinteria sanitary districts) performance standards designed to preserve the water quality in the Santa Barbara Channel for the beneficial use of shellfish harvesting.

3. Waste Discharge Requirements

To include the following requirements in the Waste Discharge Requirements or Monitoring and Reporting Program issued to the City of Santa Barbara's El Estero Wastewater Treatment Plant, and the Montecito, Goleta, Summerland, and Carpinteria sanitary districts:

- a. To notify CCRWQCB, CDPH/PSU, and the commercial shellfish growers as soon as possible (within 4 hours during regular business hours; by 10:00am the following morning if event occurs during off-business hours), of any sewage spill or malfunction of a wastewater treatment facility which results in a potential or actual discharge of sewage or inadequately treated effluent into the Santa Barbara coastal area.
- b. To develop and maintain written notification procedures incorporating the notification requirement as described above, to post the procedures at the facility, and to provide a copy of the current notification procedures to CCRWQCB, CDPH/PSU, and SBCEHS.
- c. To provide CDPH/PSU a copy of all Waste Discharge Requirements and updates or amendments, proposed or adopted, for any WWTPs whose wastes discharge to the Santa Barbara Channel.

C. SANTA BARBARA COUNTY ENVIRONMENTAL HEALTH SERVICES

To notify CDPH/PSU of any beach postings or closures due to high coliform levels, any sewage spills or line breaks, and of any other pollution event that they are notified of which could impact the ocean waters.

TABLES

MANAGEMENT PLAN FOR COMMERCIAL SHELLFISH GROWING AREA M-653-02
JANUARY 2015

TABLE 1. WASTEWATER TREATMENT PLANTS PERMITTED TO DISCHARGE TO THE SANTA BARBARA CHANNEL UNDER WASTE DISCHARGE REQUIREMENTS FROM THE CALIFORNIA REGIONAL WATER CONTROL BOARD, CENTRAL COAST REGION.

FACILITY	LOCATION	EFFLUENT (MGD)	WASTE SOURCE	TREATMENT TYPE	DISPOSAL	PERMIT EXPIRATION DATE
Carpinteria Wastewater Treatment Plant	5351 Sixth ST, Carpinteria, CA 93013	Max design: 2.5	City of Carpinteria and portions of Santa Barbara County	Screening, grit removal, primary sedimentation, aerated activated sludge tanks, chlorination/dechlorination	Into the Santa Barbara Channel through a 1000 ft outfall/diffuser, approx 25' deep	March 25, 2016
El Estero Wastewater Treatment Plant	520 East Yanonali St, Santa Barbara, CA 93103	Max design: 18, Ave: 8	City of Santa Barbara and portions of Santa Barbara County	Screening, comminution, aerated grit removal, primary sedimentation, activated sludge, secondary sedimentation, chlorination/dechlorination	Into the Santa Barbara Channel through a 8720 ft outfall/diffuser system, approx 70' deep	May 13, 2015
Goleta Wastewater Treatment Plant	1 Moffett Place, Goleta, CA 93117	Max: 25.4, Ave (dry weather): 9.0	City of Goleta, Univ of California at Santa Barbara, Santa Barbara Municipal Airport, and facilities of Santa Barbara City	Primary sedimentation, biofiltration, solids-contact, secondary clarification, chlorination/dechlorination	Into the Santa Barbara Channel through a 5912 ft outfall/diffuser system, approx 87' deep	September 1, 2015
Montecito Wastewater Treatment Plant	1042 Monte Christo Lane, Montecito, CA 93108	Ave (dry weather): 1.5	Community of Montecito	Comminution, activated sludge, secondary sedimentation, chlorination/dechlorination	Into the Santa Barbara Channel through a 1550 ft outfall/diffuser system, approx 35' deep	January 25, 2018
Summerland Wastewater Treatment Plant	2435 Wallace Ave, Summerland, CA 93067	Max: 0.5 Ave (dry weather): 0.15	Community of Summerland	Primary sedimentation, aeration, secondary sedimentation, filtration, chlorination/dechlorination, aerobic sludge digestion	Into the Santa Barbara Channel through a 740 ft outfall/diffuser, approx 20' deep	February 1, 2019

MANAGEMENT PLAN FOR COMMERCIAL SHELLFISH GROWING AREA M-653-02
JANUARY 2015

TABLE 2. WASTE DISCHARGE REQUIREMENTS AND MONITORING AND REPORTING PROGRAMS FOR WASTEWATER TREATMENT PLANTS IN THE SANTA BARBARA AREA.

FACILITY	TC/FC in Effluent	Max TC/FC at Growing Area	Notification Procedure	Notes
Carpinteria Wastewater Treatment Plant	Median TC shall not exceed 23 MPN/100mL for last 7 days; TC in any one sample shall not exceed 2300 MPN/100mL.	Median TC shall not exceed 70 MPN/100mL, and 90% of the samples shall not exceed 230 MPN/100mL for TC.	Discharger shall notify CCRWQCB, CDPH, and any shellfish grower as soon as possible in the event of a disinfection failure. Determination of whether such an event has occurred is at the sole discretion of the discharger.	1, 2, 4
EI Estero Wastewater Treatment Plant	Median TC shall not exceed 2300 MPN/100mL for last 7 days; TC in any one sample shall not exceed 16,000 MPN/100mL. Median FC shall not exceed 460 MPN/100mL for last 7 days; FC in any one sample shall not exceed 3200 MPN/100mL.	Median TC shall not exceed 70 MPN/100mL, and 90% of the samples shall not exceed a 230 MPN/100mL for TC.	Discharger shall notify CCRWQCB, CDPH, and any shellfish grower as soon as possible when loss of disinfection occurs or if 3 consecutive effluent total coliform bacteria tests exceed 16,000 MPN/100mL. Plus additional plant parameter notification requirements in accordance with the MOU.	1, 3, 4
Goleta Wastewater Treatment Plant	No more than 10% of the final effluent samples in any month (30-day) period shall exceed a TC of 2400 MPN/100 mL and no sample shall exceed 16,000 MPN/100 mL.	Median TC shall not exceed 70 MPN/100mL in any 60-day period. 90% of the samples in any 60-day period shall not exceed a 230 MPN/100mL for TC.	If any one sample exceeds 16,000 MPN/100 mL, the discharger shall notify within 48 hrs CDPH, CCRWQCB, and any certified commercial shellfish growers in the vicinity of the outfall.	1, 4, 5
Montecito Wastewater Treatment Plant	Median TC shall not exceed 23 MPN/100mL for last 7 samples; TC in any one sample shall not exceed 2300 MPN/100mL.	Median TC shall not exceed 70 MPN/100mL, and 90% of the samples shall not exceed 230 MPN/100mL for TC.	Discharger shall notify CCRWQCB, CDPH, and any shellfish grower as soon as possible in the event of a disinfection failure or if 3 consecutive effluent total coliform bacteria tests exceed 2,300 MPN/100mL. Determination of whether such an event has occurred is at the sole discretion of the discharger.	1, 2, 4
Summerland Wastewater Treatment Plant	Median TC shall not exceed 23 MPN/100mL for last 7 samples; TC in any one sample shall not exceed 2300 MPN/100mL.	Median TC shall not exceed 70 MPN/100mL, and 90% of the samples shall not exceed a 230 MPN/100mL for TC.	Discharger shall notify CCRWQCB, CDPH, and any shellfish grower as soon as possible in the event of a disinfection failure. Determination of whether such an event has occurred is at the sole discretion of the discharger.	1, 4

MANAGEMENT PLAN FOR COMMERCIAL SHELLFISH GROWING AREA M-653-02
JANUARY 2015

Table 2. Continued

NOTES:

1. El Estero, Goleta, Summerland, Carpinteria, and Montecito have additional coliform limits: The discharger shall not cause the following bacteriological limits to be exceeded between the shoreline and the 30-foot depth contour/a distance of 1,000 feet from the shoreline; within areas where there are kelp beds; and within areas used for body contact recreation:

<u>Parameter</u>	<u>Total Coliform Organisms (MPN/100mL)</u>	<u>Fecal Coliform Organisms (MPN/100mL)</u>	<u>Enterococcus Organisms (MPN/100mL)</u>
Geometric Mean (30 days, 5 most recent samples)	1,000	200	35
Single Sample Maximum	10,000*	400	104

*Total coliform density shall not exceed 1,000 MPN/100mL when the FC/TC ratio exceeds 0.1

2. For Carpinteria and Montecito: if 3 consecutive effluent TC bacteria tests exceed 2,300 MPN/100 mL, a minimum of five samples shall be collected at shoreline stations and analyzed for TC over a thirty-day period. Sampling will continue until effluent TC levels return to compliance.
3. For El Estero: if 3 consecutive effluent TC bacteria tests exceed 16,000 MPN/100 mL, samples shall be collected at shoreline stations and analyzed for FC and TC once a week for a minimum of 14 days until the effluent concentrations return to compliance.
4. The "Standard Provisions and Reporting Requirements of Waste Discharge Requirements", issued by the California Regional Water Quality Control Board, dated February 2004 (latest available version) contains a general requirement that "Any noncompliance that may endanger health or the environment shall be reported orally within 24 hours from the time the discharger becomes aware of the circumstances..."
5. The transport time from the Goleta outfall to the growing area under worst-case current velocity of 0.82 ft/sec is approximately eight (8) hours. For a current velocity of 0.2 ft/sec, the transport time is approximately 30 hours.

TABLE 3. MANAGEMENT DECISION CRITERIA FOR DOMOIC ACID TOXICITY IN BIVALVE SHELLFISH.

ALERT STAGE	DOMOIC ACID CONCENTRATION ¹	ACTION ^{2,3}
<i>Jellett Result Negative⁴ (optional):</i>		
No Alert	Nondetectable: < 2.5 ppm	- Routine Sampling; - Harvest date must be < 96 hours from sampling date.
1 st Stage	2.5 – 4.9 ppm	- Harvest date must be < 48 hours from sampling date; - Immediate resample ⁵ ; - Additional sampling as directed.
2 nd Stage	5 – 9.9 ppm	- Harvest date must be < 24 hours from sampling date; - Immediate resample; - Immediate harvest closure if harvest lot laboratory results have not been obtained; - Twice-weekly sampling at minimum ⁵ ; - Expand sampling to adjacent growing areas.
<i>Jellett Result Positive⁴ (optional):</i>		
3rd Stage	10 – 19.9 ppm	- Batch release ^{3,5,6} ; - Immediate harvest closure if harvest lot laboratory results have not been obtained; - Immediate resample; - Twice-weekly sampling at minimum ⁵ ; - Expand sampling to adjacent growing areas.
4th Stage	≥ 20 ppm	- Closure of growing area; - Batch release ^{3,5,6} of shellstock from adjacent harvest areas that remain open; - Twice-weekly sampling ⁵ ; - Expand sampling to adjacent growing areas.

¹ As determined by NSSP-approved analytical method. Specified concentrations are subject to change based on acquisition of new data.

² No harvesting can be conducted without quantitative PSP and Domoic Acid results from samples collected within 96 hours prior to harvest.

³ For each alert stage, the alert shall be continued until either (a) a higher stage alert is declared, or (b) two successive samples taken over a minimum period of three days have domoic acid levels consistent with a lower alert stage and downward trends in biotoxin levels in the surrounding area.

⁴ Applies to both the rapid extraction and methanol extraction methods.

⁵ Contingent upon arrangement with certified laboratory.

⁶ Batch release means that the grower must submit samples from each harvested lot of shellfish and shall not release that lot to market until CDPH has verified its safety based on satisfactory analytical results. Product must be held under appropriate temperature control while awaiting analytical results. Growers should consult the CDPH Food and Drug Branch for guidance on proper handling and storage of the batch-harvested shellstock.

TABLE 4. MANAGEMENT DECISION CRITERIA FOR PSP TOXICITY IN BIVALVE SHELLFISH.

ALERT STAGE	PSP TOXIN CONCENTRATION ¹	ACTION ^{2,3}
<i>Jellett Result Negative⁴:</i>		
No Alert	Nondetectable: < ~34 ug/100g	<ul style="list-style-type: none"> - Routine Sampling; - Harvest date must be < 96 hours from sampling date.
<i>Jellett Result Positive⁴:</i>		
1st Stage	Detectable: < 50 ug/100g	<ul style="list-style-type: none"> - Harvest date must be < 48 hours from sampling date; - Immediate resample; - Additional sampling as directed.
2nd Stage	Detectable: < 60 ug/100g	<ul style="list-style-type: none"> - Harvest date must be < 24 hours from sampling date; - Immediate resample; - Immediate harvest closure if harvest lot laboratory results have not been obtained; - Twice-weekly sampling at minimum⁴; - Expand sampling to adjacent growing areas.
3rd Stage	60 - 79 ug/100 g	<ul style="list-style-type: none"> - Batch release^{3,5,6} ; - Immediate harvest closure if harvest lot laboratory results have not been obtained. - Immediate resample; - Twice-weekly sampling at minimum⁴; - Expand sampling to adjacent growing areas.
4th Stage	≥ 80 ug/100 g	<ul style="list-style-type: none"> - Closure of growing area; - Batch release^{3,5,6} of shellstock from adjacent harvest areas that remain open; - Twice-weekly sampling⁴; - Expand sampling to adjacent growing areas.

¹ As determined by NSSP-approved analytical method. Specified concentrations are subject to change based on acquisition of new data.

² No harvesting can be conducted without quantitative PSP and Domoic Acid results from samples collected within 96 hours prior to harvest.

³ For each alert stage, the alert shall be continued until either (a) a higher stage alert is declared, or (b) two successive samples taken over a minimum period of three days have PSP toxin levels consistent with a lower alert stage and downward trends in biotoxin levels in the surrounding area (see note 4, below).

⁴ Jellett results are only to be used to establish increasing alert stages, and not for declining alert stages.

⁵ Contingent upon arrangement with certified laboratory.

⁶ Batch release means that the grower must submit samples from each harvested lot of shellfish and shall not release that lot to market until CDPH has verified its safety based on satisfactory analytical results. Product must be held under appropriate temperature control while awaiting analytical results. Growers should consult the CDPH Food and Drug Branch for guidance on proper handling and storage of the batch-harvested shellstock.

FIGURES

MANAGEMENT PLAN FOR COMMERCIAL SHELLFISH GROWING AREA M-653-02
JANUARY 2015

FIGURE 1. LOCATION OF LEASE M-653-02, WASTEWATER TREATMENT PLANT OCEAN OUTFALLS, AND PROHIBITED AREAS IN THE SANTA BARBARA CHANNEL.

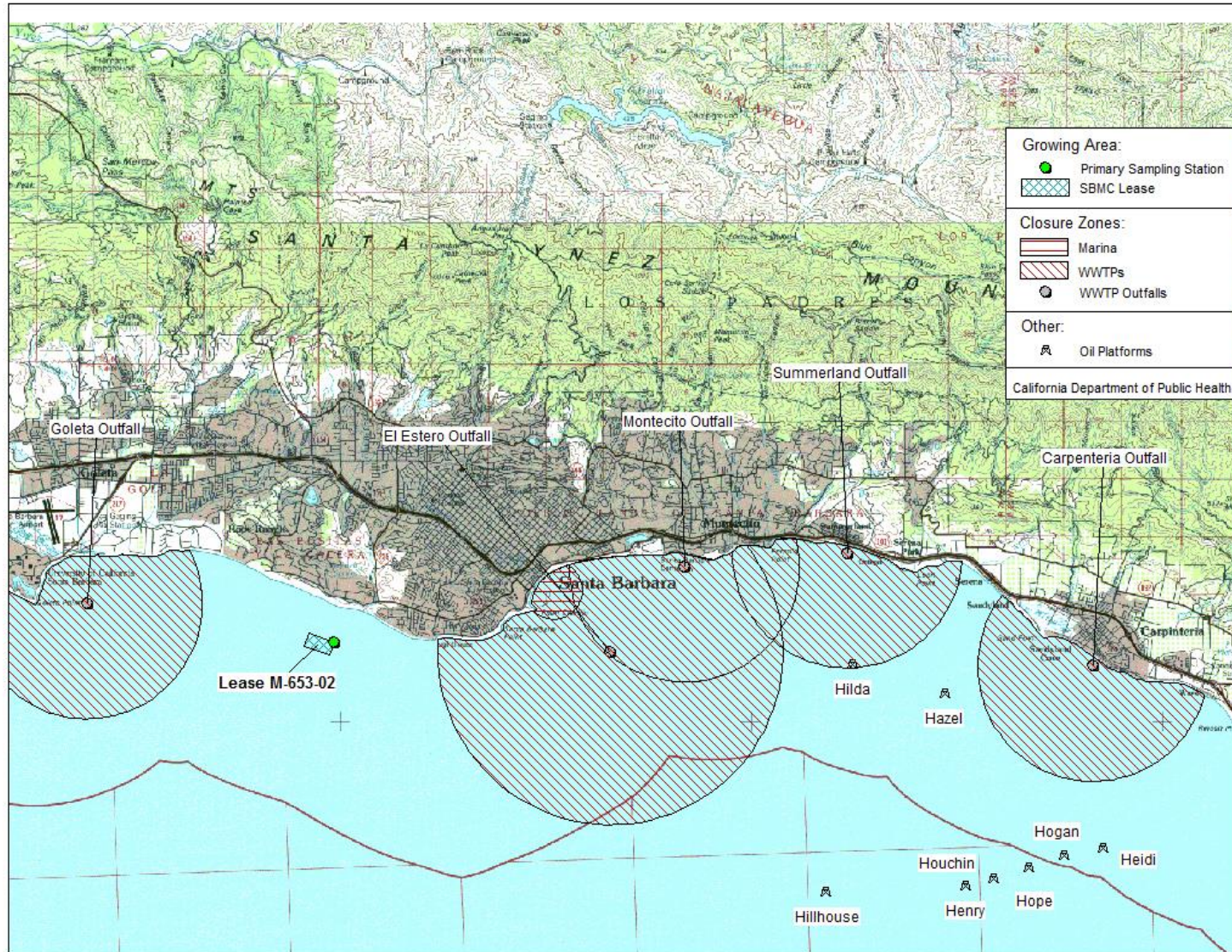
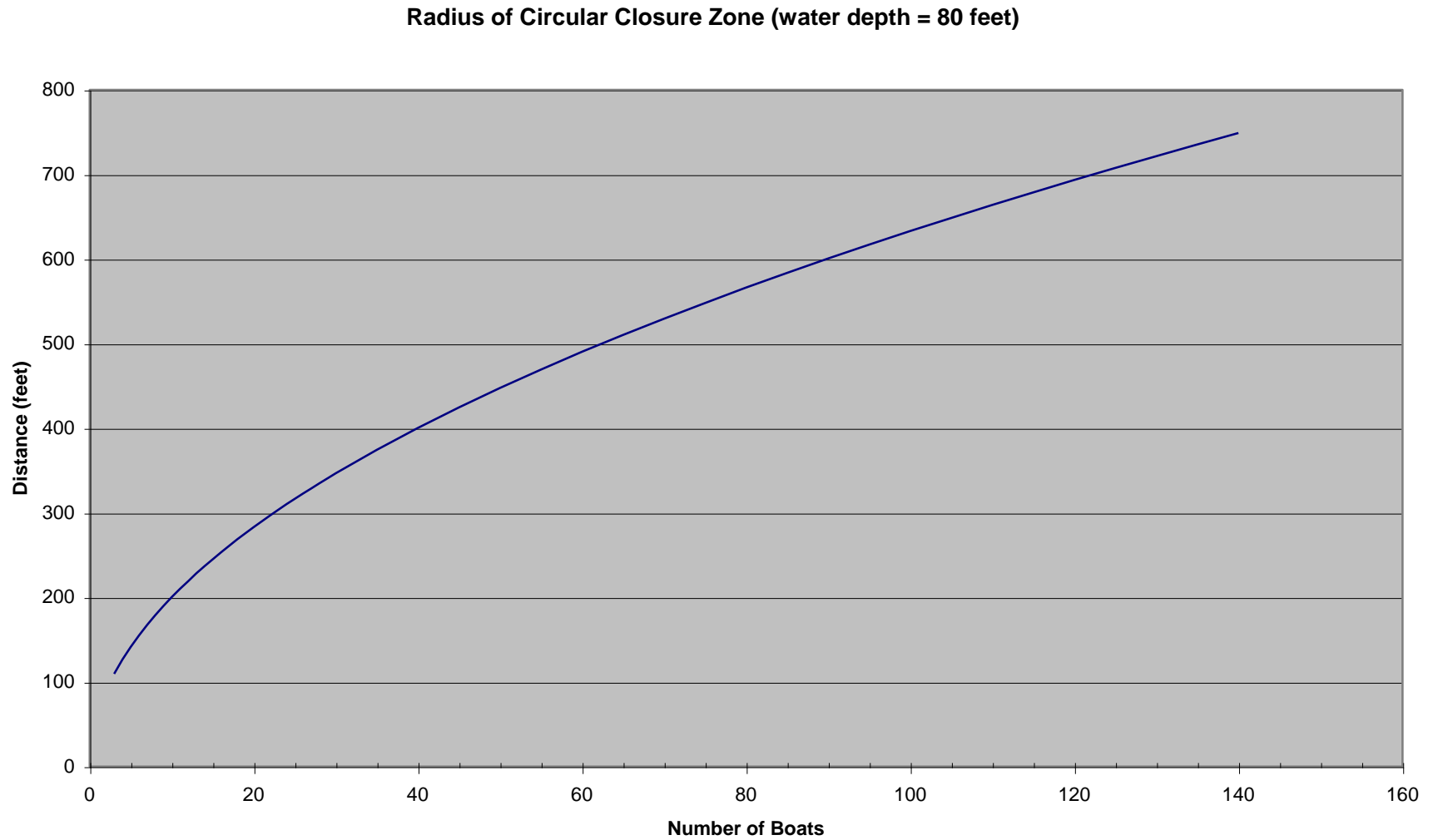


FIGURE 2. CALCULATED SAFE DISTANCES IN SANTA BARBARA CHANNEL BETWEEN MOORED LIVE-ABOARD BOATS AND SHELLFISH GROWING AREAS



APPENDICES

APPENDIX A. CONTACT LIST FOR SANTA BARBARA LEASE M-653-02

CALL-DOWN CONTACT LIST

Joe Christen
Preharvest Shellfish Unit
Environmental Management Branch
California Department of Public Health
510-412-4638
Joe.Christen@cdph.ca.gov

Gregg Langlois, Chief
Preharvest Shellfish Unit
Environmental Management Branch
California Department of Public Health
510-412-4635
Gregg.Langlois@cdph.ca.gov

Vanessa Zubkousky-White
Preharvest Shellfish Unit
Environmental Management Branch
California Department of Public Health
510-412-4631
Vanessa.Zubkousky@cdph.ca.gov

Eric Trevena
State Shellfish Program
Environmental Management Branch
California Department of Public Health
916-449-5695
Eric.Trevena@cdph.ca.gov

Sam Rankin
Preharvest Shellfish Unit
Environmental Management Branch
California Department of Public Health
510-412-4633
Sam.Rankin@cdph.ca.gov

**AFTER HOURS SHELLFISH
NOTIFICATION:**

California Emergency Management Agency
800-852-7550 or 916-262-1621

OTHER CONTACTS

Kelvin Yamada, Chief
Environmental Management Branch
California Department of Public Health
916-449-5661

Mark Jeude, Chief
Environmental Health Services Section
California Department of Public Health
916-449-5693

Bernard Friedman
Santa Barbara Mariculture Company
805-886-1283

Jessie DeLoach
Regional Shellfish Specialist
U.S. Food and Drug Administration
206-553-7001, ext 51

MANAGEMENT PLAN FOR COMMERCIAL SHELLFISH GROWING AREA M-653-02
JANUARY 2015

Kirsten Ramey
Marine Resources Coordinator
California Department of Fish and Wildlife
707-445-5365

Pat Kennelly, Chief
Food Safety Section
California Department of Public Health
916-319-9661

Todd Heldoorn
Wastewater Treatment Superintendent
El Estero Wastewater Treatment Plant
805-568-1003

Nicole Givens
Food and Drug Branch
California Department of Public Health
916-319-9661

Jennifer Bernstein
Director, Environmental Health Services
Santa Barbara County Health Care
Services Department
805-681-4900

Kenneth Harris Jr
Executive Officer
California Central Coast Regional Water
Quality Control Board
805-549-3140

Scott Riedman
Harbormaster
City of Santa Barbara
805-564-5531

Peter VonLangen
California Central Coast Regional Water
Quality Control Board
805-549-3688

Rebecca Bjork
Water Resources Manager
City of Santa Barbara, Public Works Dept.
805-564-5387

Diane Gabriel
General Manager
Montecito Sanitary District
805-969-4200

Kamil S. Azoury
General Manager
Goleta Sanitary District
805-967-4519

Craig Murray
General Manager
Carpinteria Sanitary District
805-684-7214, ext. 12

Mike Sullivan
General Manager
Summerland Sanitary District
805-969-4344

Janet Hashimoto, Chief
Marine Protection
U.S. Environmental Protection Agency
415-947-8021

Randy Lovell
Aquaculture Coordinator
California Department of Fish and Wildlife
916-445-2008

Michael W. Gjerde
Engineering Geologist,
Ocean Standards Unit
California State Water Boards
916-341-5283

APPENDIX B. MEMORANDUM OF UNDERSTANDING

MEMORANDUM OF UNDERSTANDING
BY AND BETWEEN
THE
CALIFORNIA DEPARTMENT OF HEALTH SERVICES
AND
CITY OF SANTA BARBARA

This Memorandum of Understanding (hereinafter MOU), is made and entered into by and between the California Department of Health Services (hereinafter DHS), and the City of Santa Barbara (hereinafter City).

The purpose of this MOU is to facilitate DHS's ability to manage shellfish growers in the Santa Barbara Channel in conformance with the standards and related procedures of the National Shellfish Sanitation Program (hereinafter NSSP).

WHEREAS, the U.S. Food and Drug Administration administers the NSSP; AND

WHEREAS, California statute, contained in the Health and Safety Code, requires DHS to develop and administer a shellfish sanitation and control program which conforms to the standards and related procedures of the NSSP; AND

WHEREAS, the NSSP standards and related procedures are set forth in the NSSP Model Ordinance (1997 Revision); AND

WHEREAS, the NSSP Model Ordinance provides the definitions, criteria, and requirements for classification of shellfish growing areas; AND

WHEREAS, the NSSP Model Ordinance definition, criteria, and requirements for conditional classifications of shellfish growing areas include: 1) the development of management plans based on wastewater treatment plant function and performance standards; and 2) procedures for immediate notification when wastewater treatment plant performance standards and criteria are not met; AND

WHEREAS, the City owns and operates the El Estero Wastewater Treatment Plant (hereinafter EEWWTWP); AND

WHEREAS, the EEWWTWP effluent outfall is located 1½ miles offshore of the Santa Barbara coast; AND

WHEREAS, the California Regional Water Quality Control Board (hereinafter CRWQCB), on September 8, 1999, adopted Waste Discharge Requirements (hereinafter WDR) Order No. 99-40 (National Pollutant Discharge Elimination System Permit No. CA0048143) for EEWWTWP; AND

WHEREAS, the WDR's were adopted in part to protect beneficial uses of the Pacific Ocean, including shellfish harvesting; AND

WHEREAS, the effluent of the EEWWTWP may potentially impact the water quality of nearby shellfish growers if there is a loss of effluent disinfection; AND

WHEREAS, Monitoring and Reporting Program No. 99-40 of the WDR's requires "Discharger shall notify the CRWQCB (telephone: 805 549-3147), DHS (telephone: 510-540-3423), and any Mariculture Grower as soon as possible when there is a loss of disinfection or if three consecutive effluent coliform bacteria tests exceed 16,000 MPN/100ml."; AND

WHEREAS, the City has developed and implemented the "Operator Effluent Monitoring and Early Warning Notification Procedure" at EEWWTWP in accordance with the WDR's and with the concurrence of DHS as a further measure to protect the environment and public health. [A copy of the "Operator Effluent Monitoring and Early Warning Notification Procedure" (dated July 19, 2000), is attached and made a part of this MOU.]; AND

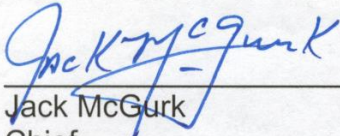
WHEREAS, both the City and DHS have an interest in protecting the environment and public health.

NOW, THEREFORE, it is mutually agreed and understood as follows:

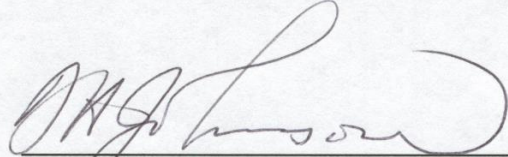
1. The City and DHS have worked together in establishing a routine Monitoring and Early Warning Program for the purpose of providing adequate levels of safety for the shellfish growing waters through the evaluation, acceptance and implementation of the "Operator Effluent Monitoring and Early Warning Notification Procedure."

MANAGEMENT PLAN FOR COMMERCIAL SHELLFISH GROWING AREA M-653-02
JANUARY 2015

2. This MOU and the "Operator Effluent Monitoring and Early Warning Notification Procedure", may be amended as mutually agreed upon by the City and DHS.
3. The effective date of this MOU shall be the last date signed below.
4. This MOU can be terminated unilaterally by the City with 60 days written notice.



Jack McGurk
Chief
Environmental Management Branch
Department of Health Services
State of California

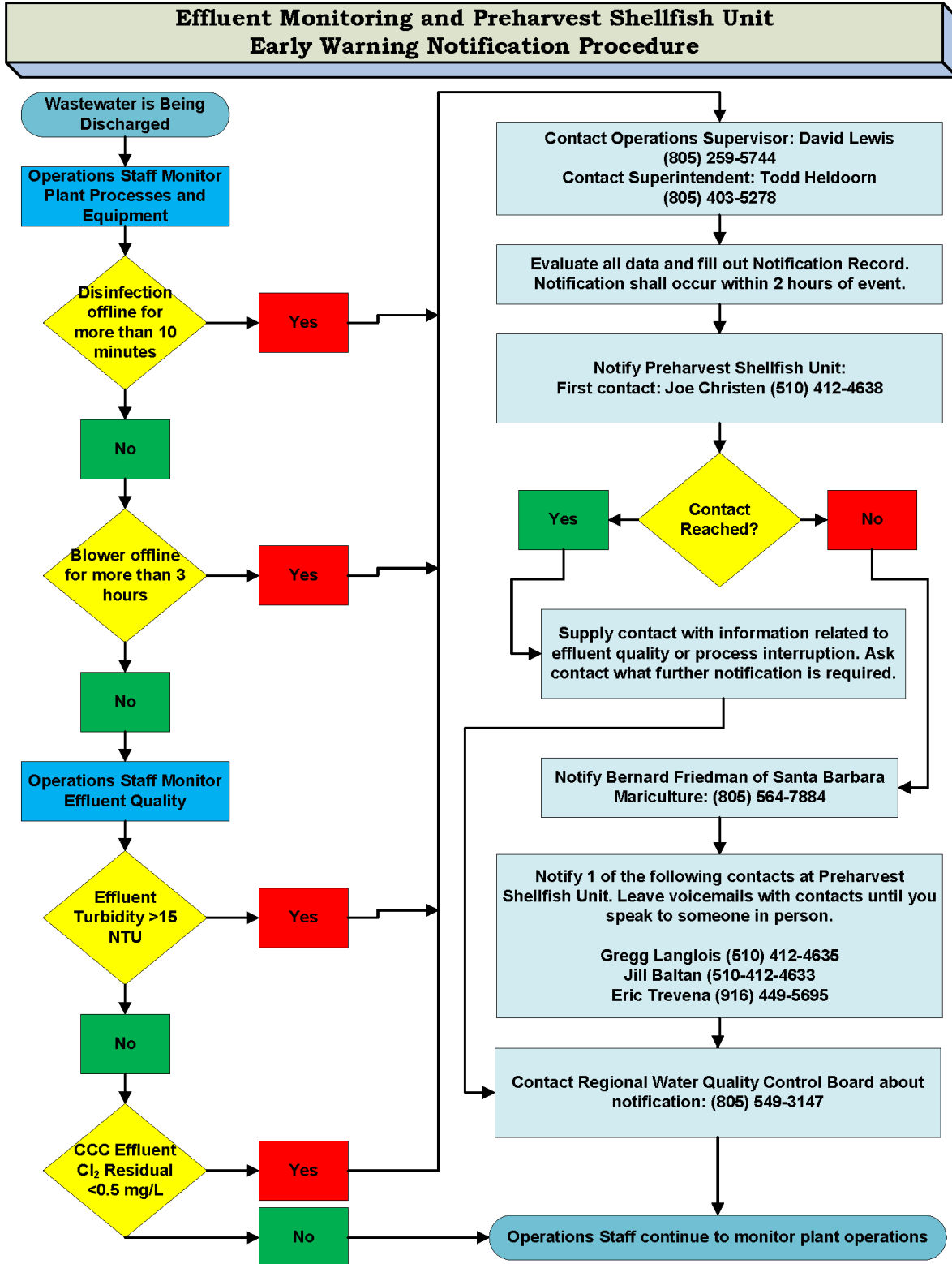


David H. Johnson
Director
Public Works Department
City of Santa Barbara

01-31-01
Date

01-23-01
Date

Figure B-1. El Estero Effluent Monitoring and Notification Procedure



APPENDIX C. STANDARD OPERATING PROCEDURE TEMPLATE FOR MOVEMENT, WORKING, GRADING, AND TRANSPLANTING OF SHELLSTOCK DURING HARVEST CLOSURES

Company Name		
Owner(s)		
Signature of Owner		Date:
Person(s) Responsible for Onsite Forms		
Person(s) Responsible for Company Records		
Date Prepared		
Prepared by		
Signature of Preparer		Date:
Date Approved		
Approved by (CDPH staff)		Date:

A. INTRODUCTION

This Standard Operating Procedure (SOP) is a general reference that lists the required procedures to be followed and the documentation to be completed by company personnel when shellstock is removed from the growing area during a harvest closure. Records shall be maintained on a daily basis as the work progresses. The procedures and records involved must allow easy identification of shellstock lots during CDPH patrol and field audit activities.

For the purposes of this plan, "shellfish" means all species of bivalve molluscan shellfish, including oysters, mussels, clams, and scallops. The National Shellfish Sanitation Program (NSSP) Model Ordinance (2013) defines 'harvest' as the act of removing shellstock from growing waters and placing it on or in a manmade conveyance or other means of transport.

B. PURPOSE

The purpose of this SOP is to document all aspects of the movement and handling of shellstock during a harvest closure. This includes procedures for the clear marking of bags or containers to indicate pertinent dates and times associated with shellstock movement, clear marking of the destination location of each lot of moved shellstock, and detailed records that document these procedures.

This SOP is intended to ensure that the shellstock removed from the water during a harvest closure for the purpose of sorting, culling, or transplanting shall not be harvested before it has had adequate time to cleanse and return to acceptable bacteriological levels. This SOP and associated forms will provide detailed information necessary to allow verification of shellstock movement and compliance with required

holding times prior to harvest. The approved SOP serves as CDPH approval of the proposed movement *procedures*. Field verification or file audits may be conducted by CDPH staff or law enforcement officers acting on behalf of CDPH. The movement of shellstock during rainfall closures is not intended for purposes of wet storage or depuration.

All procedures and holding times associated with shellstock movement during a harvest closure will be adequately documented. These procedures are used by (SPECIFY COMPANY NAME) for working, grading and transplanting shellstock in (SPECIFY LEASE OR GROWING AREA DESIGNATION) in (SPECIFY BODY OF WATER, e.g. TOMALES BAY).

C. PROCEDURES

1. Shellstock Movement Conditions

This SOP provides the required detail for (SPECIFY CONDITIONS 1, 2, AND/OR 3) as defined in the current Management Plan, Section IX.A.4.

2. Shellstock Source Location

During a harvest closure the company may remove shellstock from the following leases or areas for maintenance work: (SPECIFY LEASE OR GROWING AREA DESIGNATION). The exact location of origin (e.g., line number) will be recorded on all tracking forms. The exact time the shellstock was removed from the water, as well as the quantity of each species of shellstock removed, will be recorded on site as follows (SPECIFY HOW THE TIME WILL BE RECORDED ON SITE AND BY WHOM). This information will be formally recorded on the tracking forms by (NAME PERSON(S) RESPONSIBLE FOR RECORD KEEPING) within XX hours.

3. Shellstock Landing Location

The company will temporarily land shellstock at (SPECIFY EXACT LOCATION) for the following activities (SPECIFY ALL ACTIVITIES TO BE CONDUCTED, SUCH AS SORTING AND CULLING):

4. Shellstock Destination Location

The company will return the shellstock that have been temporarily removed from the water for the above-stated activities to the following growing areas (SPECIFY THE EXACT LEASES OR AREAS THAT MAY RECEIVE THE MOVED SHELLSTOCK):

The quantity of each species placed in each area, the exact location it is placed, and the time at which it was placed there, shall be recorded on site as follows (SPECIFY HOW THE TIME WILL BE RECORDED ON SITE AND BY WHOM). This information will be formally recorded on the tracking forms by (NAME PERSON(S) RESPONSIBLE FOR RECORD KEEPING) within XX hours.

- a. *Shellstock Destination Marking* (Not required if containers are marked. COMPANY SHOULD MODIFY ACCORDING TO THEIR SPECIFIC

PRACTICES). Orange buoys will mark the four corners of the area that contains a moved lot of shellstock. The buoys will be marked or tagged with the lot number, 'harvest' date/time, and transplant date/time to allow CDPH or its designated patrol officer to identify the shellstock.

- b. *Shellstock Container Marking.* Shellstock that has been taken out of the water during a closure will be appropriately marked (DESCRIBE METHOD FOR MARKING SHELLSTOCK (E.G. COLOR CODED TAGS WITH LABELING OF DATE AND TIME)). Shellstock that has been moved will be marked with the lot number, 'harvest' date/time, and transplant date/time. This information will also be recorded on the tracking form by (NAME PERSON(S) RESPONSIBLE FOR RECORD KEEPING) within XX hours.

5. Record Keeping

The company will document the current shellstock movement activities in a field log maintained in the work area. This record shall be provided to the patrol officer upon request during a site inspection.

The company shall maintain written records of all shellstock movements on the tracking form (Table C-1). Information that will be documented on the tracking form for each movement made during a closure includes: Source location of shellstock, lot number and species of shellstock moved, type of movement made, date that movement is made, record of start time (time that first shellfish is removed from water), record of end time when shellstock is placed back in certified growing water, location where shellstock is worked on, location where shellstock is returned, person accountable for overseeing movement and maintaining records (recorder).

D. DEFINITIONS

Harvest: the act of removing shellstock from growing areas and its placement on or in a manmade conveyance or other means of transport.

Lot of shellstock: a single type of bulk shellstock or containers of shellstock of no more than one day's harvest from a single defined growing area gathered by one or more harvesters.

Management Plan: document that describes the procedures that shellfish growers must follow in order to be in compliance with their shellfish growing area certificate.

Shellfish: all species of: oysters, clams, or mussels whether: Shucked or in the shell; raw, including post harvest processed; frozen or unfrozen; Whole or in part; and Scallops in any form except when the final product form is the adductor muscle only.

Shellstock: live molluscan shellfish in the shell.

MANAGEMENT PLAN FOR COMMERCIAL SHELLFISH GROWING AREA M-653-02
JANUARY 2015

Table C-1. Shellstock Movement Tracking Form

Date	Lot #/ Species	Movement Type (I, II or III)	Source Location	Harvest Time		Work Location	Destination Location	Quantity	Time added to reopening	Date/ Time of harvest	Recorded By (initials)
				Start	Finish						

List of recorders:
Name:

Initials:

List of abbreviations:
Work locations:

Source locations:

APPENDIX D. WASTEWATER UPSET RESPONSE PROCEDURES

The following procedures shall be followed in the event of a failure in the wastewater collection or treatment system resulting in a “wastewater upset”. A wastewater upset occurs whenever inadequately treated wastewater has exited the confines of the wastewater treatment or collection system and has the potential to enter the Santa Barbara Channel.

In the event of a wastewater upset that results in a potential or actual discharge of inadequately treated effluent into the Channel, the responsible agency will notify CDPH and the grower of the location and estimated volume of wastewater released to the waterbody. Upon notification of a sewage spill SBMC shall consider the growing area closed to harvesting. CDPH/PSU will contact SBMC to confirm that notification of the wastewater upset event has been received, and that the grower has ceased harvest operations after the start of the upset. Harvesting shall not occur until after CDHS/PSU has evaluated the event and determined the required actions. If harvesting has occurred after the start of the spill, the grower should consult CDPH Food and Drug Branch to determine the disposition of harvested shellstock.

Spill Volume Thresholds

CDHS/PSU will establish that the spill has been abated and determine if spill volume and location warrant closure of the growing area. Minimum spill volume thresholds that will result in closure are presented in Table D-1. For spill locations not specified in Table D-1, thresholds will be determined by interpolation or extrapolation from a nearby location in Table D-1. CDPH/PSU may modify the above procedure based on the specific conditions of the reported spill. After the determination has been made, CDPH/PSU will notify the grower of the status of the growing area.

Spill Attenuation

CDPH/CSU will conduct analyses to estimate when fecal coliform concentrations resulting from an upset will be attenuated to acceptable levels (14 MPN/100 mL). Attenuation analysis will be conducted as described in the Sanitary Survey for Commercial Shellfish Growing Area Lease M-653-02. The analysis accounts only for dispersion of the sewage spill by currents, and ignores bacterial die-off. This conservative approach is appropriate because die-off rates of many of the pathogenic viruses associated with sewage, and for which fecal coliforms serve as imperfect indicators, are unknown.

CDPH/PSU will instruct SBMC to begin collecting samples when the attenuation analysis indicates acceptable water quality. The grower should not sample until instructed to do so by CDPH.

Sampling and Opening Criteria

When instructed by CDPH, grower will collect one water quality sample at the primary station. Fecal coliform results from each site must be equal to or lower than 14 MPN/100mL for the growing area to be considered for reopening. In addition, consistent, acceptable levels of fecal coliforms must be obtained from all sites in the surrounding area, and the source of contamination must have been abated. If results for any sampling stations are above the acceptable level, growers will be instructed to resample. Sampling will continue until all sampling stations meet the above target.

Table D-1. Sewage Upset Threshold Volumes

Location	Threshold Volume (Gallons)
Arroyo Burro Creek	9,000
Mission Creek	20,000
Santa Barbara Estero WWTP	20,000
Goleta WWTP	20,000
Goleta Slough	
Montecito WWTP	30,000
Summerland WWTP	50,000

MANAGEMENT PLAN FOR COMMERCIAL SHELLFISH GROWING AREA M-653-02
JANUARY 2015

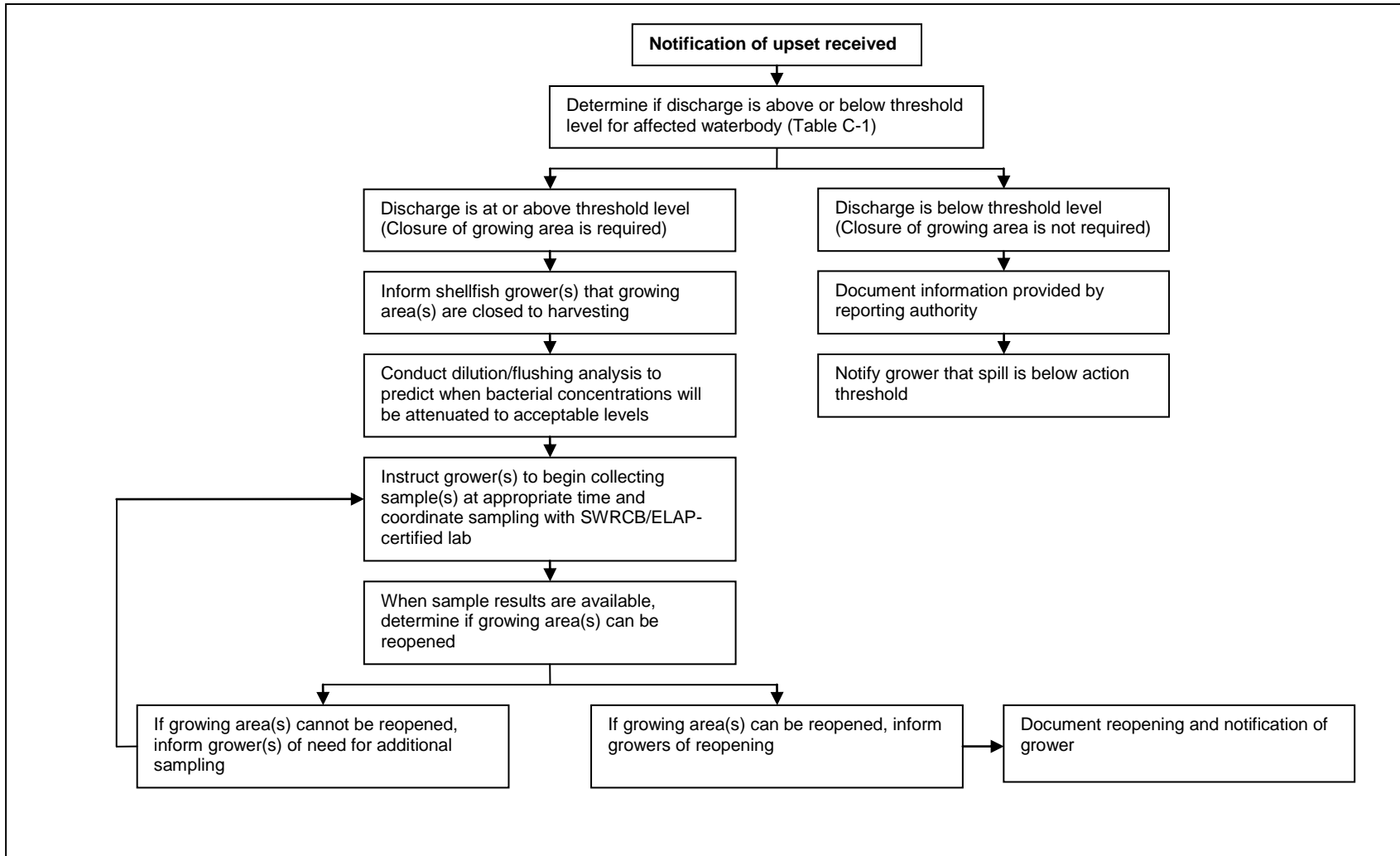


Figure D-1. Wastewater upset decision tree for California Department of Public Health.

MANAGEMENT PLAN FOR COMMERCIAL SHELLFISH GROWING AREA M-653-02
JANUARY 2015

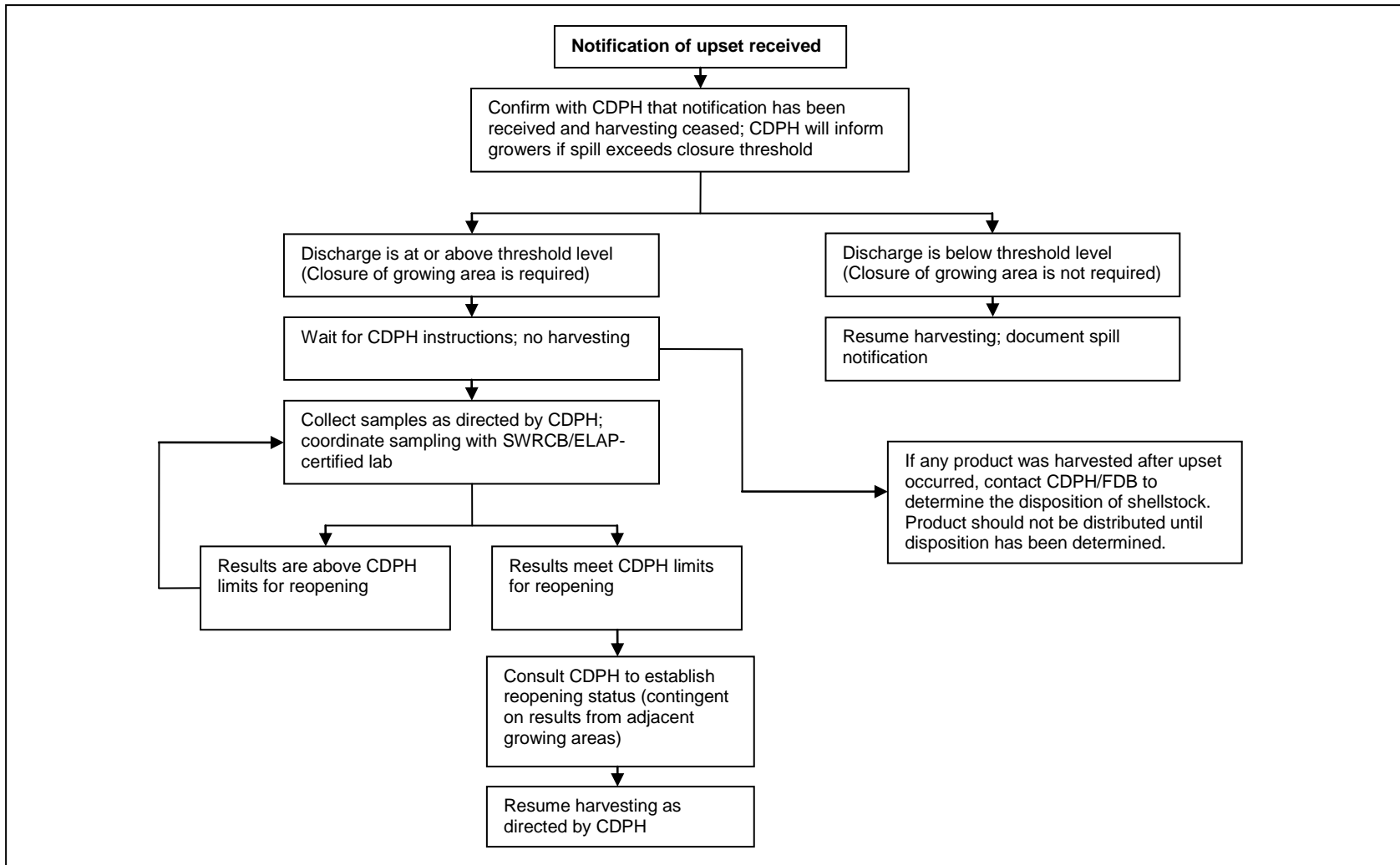


Figure D-2. Wastewater upset decision tree for growers.

MANAGEMENT PLAN FOR COMMERCIAL SHELLFISH GROWING AREA M-653-02
JANUARY 2015

APPENDIX E. SHELLFISH HARVESTER'S MONTHLY REPORT OF RAINFALL AND HARVEST OPERATIONS

HARVESTER _____
GROWING AREA _____

MONTH/YEAR _____
RAIN GAUGE LOCATION _____

This form is for the use of California certified shellfish growers who harvest from conditionally approved areas. Growers are required to complete and file this form in accordance with the Management Plan for the conditionally approved area in which they conduct harvesting operations.

Day	Rainfall in inches	Closure & Reopening Dates and Times	Harvest Times & Amounts
1			
2			
3			
4			
5			
6			
7			
8			
9			
10			
11			
12			
13			
14			
15			
16			
17			
18			
19			
20			
21			
22			
23			
24			
25			
26			
27			
28			
29			
30			
31			

MANAGEMENT PLAN FOR COMMERCIAL SHELLFISH GROWING AREA M-653-02
JANUARY 2015

APPENDIX F. HARVESTING DAY WWTP CONTACT LOG

Month:				Harvester:			
Date		Time	WWTP	Contact	Disinfection Failure within last 24hrs		If Yes, provide details (including name and time of CDPH contact)
					No	Yes	
	Initial Contact:						
	Follow-up Contact:						
	Initial Contact:						
	Follow-up Contact:						
	Initial Contact:						
	Follow-up Contact:						
	Initial Contact:						
	Follow-up Contact:						
	Initial Contact:						
	Follow-up Contact:						
	Initial Contact:						
	Follow-up Contact:						
	Initial Contact:						
	Follow-up Contact:						
	Initial Contact:						
	Follow-up Contact:						
	Initial Contact:						
	Follow-up Contact:						

APPENDIX F – HARVESTING DAY WWTP CONTACT LOG (Continued)

WWTP Contacts:

Carpinteria:	Mark Bennett @ 805-684-7214, ext. 17
Goleta:	Robert Hidalgo @ 805-967-4519
Montecito:	Brett Walker @ 805-969-4200 Cell: 805-284-6889
Santa Barbara	Todd Heldoorn @ 805-568-1003 Or: 805-568-1910 between 7:00 a.m. and 1:00 a.m. 805-963-4286 (emergency answering service) between 1:00 a.m. and 7:00 a.m.
Summerland	Mike Sullivan @ 805-969-4344

APPENDIX G. MARINE BIOTOXIN MONITORING

This appendix contains two protocols for marine biotoxin monitoring. Procedure 1 is to be used for collecting shellfish samples to be submitted to the California Department of Public Health for biotoxin analysis. Procedure 2 should be used when performing field biotoxin analysis using Jellett test strips and when collecting phytoplankton samples. Training in both procedures will be provided to the grower by CDPH.

Procedure 1 was developed by the California Department of Public Health. Procedure 2 was developed by the California Department of Public Health and the University of California Santa Cruz as part of the Cal-PreEMPT Program, with support from the National Oceanographic and Atmospheric Administration's Monitoring and Event Response for Harmful Algal Blooms (MERHAB).

PROCEDURE 1: COLLECTING SHELLFISH SAMPLES TO BE SENT TO CDPH FOR BIOTOXIN ANALYSIS (NOT ANALYZED IN THE FIELD)

Prepared By

California Department of Public Health
Environmental Management Branch
and
Environmental Microbial Diseases Laboratory

INTRODUCTION

The following field sampling protocol will accommodate analysis for both paralytic shellfish poisoning (PSP) toxins and domoic acid (DA). Because a preservative cannot be used at the time of sample collection, it is imperative that the field collectors take care to ensure the integrity of each sample.

1. **SAMPLING:** A sample should consist of a single species of bivalve shellfish (mussels, oysters, clams, etc.) collected randomly from the sampling site. Each sample should include a **minimum of 15 individuals and at least 250 grams of drained shellfish meat**; this provides adequate material for both analyses with a reserve as insurance against a possible lab accident. This is equivalent to a volume of about one (1) cup of shucked meats. It takes up to 40 small sea mussels (about 2 inches shell length) to produce 250 grams of meat. Avoid collecting only a few very large specimens: this may provide misleading information on the presence or absence of toxin.
2. **FIELD PREPARATION OF SAMPLES:**
 - a. Shucked samples.
 - (1) Thoroughly clean the outside of shellfish with water.
 - (2) Open shell by cutting the adductor muscle(s). Do not use heat or anesthetic before opening shell. **Cut carefully to avoid damage to body of mollusk.**
 - (3) Rinse the opened shellfish to remove sand or other foreign materials if needed.
 - (4) For mussels, cut off byssal threads (attachment hairs) with scissors and discard, saving all meat.
 - (5) Open shell and drain off excess liquid. Remove meat from shell without damaging tissue.
 - (6) Drain shucked meat on a #10 mesh sieve without layering for five (5) minutes.
 - (7) Place drained meat into a wide-mouthed, 16-ounce sample bottle. About 1/2 to 2/3 of a sample bottle of shellfish meat provides the desired amount. NOTE: Do not overfill; be sure to leave an air space to accommodate expansion upon freezing.
 - (8) Tighten cap securely. Refrigerate immediately in the field.
 - (9) **Freeze sample** as soon as possible; ensure that sample is frozen prior to shipment.
 - (10) Fill out sample submission slip; be sure to record sample **bottle number** and **type of shellfish** (e.g., Pacific oyster, bay mussel, etc.). A list of representative sample types and their associated codes is presented in Table 1. In addition, please record the **sample location and sampling date**, and **include your name and telephone number** so that we may contact you immediately. The presence of high toxin concentrations may necessitate immediate resampling.
 - b. Unshucked samples: If you have been instructed or authorized to send unshucked shellfish samples, clean the outside of shellfish, wrap in newspaper to cover sharp edges, place in a heavy gauge plastic bag and seal, double bag the sample, and check for leaks. Refrigerate immediately.

MANAGEMENT PLAN FOR COMMERCIAL SHELLFISH GROWING AREA M-653-02
JANUARY 2015

3. **SHIPPING:** Rapid testing of samples for PSP and DA is extremely important. Samples should be shipped as soon as possible by the most rapid means available, while taking care that they arrive at the laboratory in an unspoiled condition.
- a. Place frozen sample(s) in an insulated shipping container with an adequate quantity of frozen ice packs and sandwiched in absorbent materials to soak up any leakage or condensation.
 - b. Place sample submission slip(s) on top of the Styrofoam lid; close and seal the shipping container.
 - c. Containers returned to you from the laboratory will have mailing labels inside a plastic mailing envelope taped onto the lid or side. Remove the label addressed to you and reverse labels so that the box is addressed to the laboratory. Remove or cover any old UPS or other shipping label(s) that could cause confusion.
 - d. Package should be addressed to:

California Department of Public Health
MDL/EMDS
ATTN: Specimen Receiving MS B106
850 Marina Bay Parkway
Richmond, CA 94804
 - e. Send package by Courier Service, In accordance with prior arrangements.
 - (1) Next-day courier service may be provided in some locations by EMB: call (510) 412-4635 for information; or
 - (2) You may use your own courier at your own expense.
 - f. Avoid sending samples at the end of the week or just before holidays. Prolonged transit time causes increased risk of spoilage.
 - g. All questions regarding this protocol should be directed to the EMB office at (510) 412-4635.

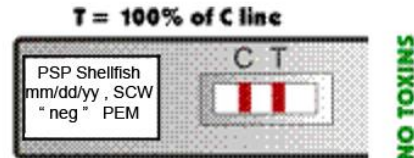
SAMPLE TYPE	CODE
Wild Sea Mussels (<i>Mytilus californianus</i>)	WSMU
Sentinel Sea Mussels	SSMU
Wild Bay Mussels (<i>Mytilus edulis</i>)	WBMU
Sentinel Bay Mussels	SBMU
Cultured Bay Mussels	CBMU
Cultured Pacific Oysters (<i>Crassostrea gigas</i>)	CPOY

Table 1. Common sample types and their respective codes.

PROCEDURE 2: PHYTOPLANKTON SAMPLING AND FIELD BIOTOXIN ANALYSIS

Labeling

Label Jellett test strips and shellfish extract vial with the following information: toxin, sample type (e.g. mussel, oyster or phytoplankton), date, location, test strip results (+/-), and your initials. Use the back of the test strip for more space, if needed. See example:



Phytoplankton Samples

Collecting & Observing Phytoplankton Sample:

1. Use plankton net to obtain 300 mL sample: retrieve net very slowly
2. Record total length of the tow (depth x number of repetitions, e.g. 30 feet x 5 tows = 150 feet)
3. Swirl net sample to resuspend, and fill 125 mL bottle containing formalin just to the shoulder
4. Pour the remaining sample into a clean bottle without formalin
5. Allow live sample to settle for 15 minutes
6. Pipette several drops of the settle material to a microscope slide and place a coverslip on the drops, or use a small flat glass capillary tube to pull up a quantity of the settle material
7. Observe the slide/capillary for the presence of *Pseudo-nitzschia* or *Alexandrium* and record estimate of percent composition or relative abundance (Absent, Rare, Present, Common, Abundant).
8. Note other most common species along with an estimate of percent composition or abundance.
9. Fill out data sheet with observations and percentages
10. Repeat steps 6 through 9 for a total of three separate observations
11. Field sheets should be photocopied before shipping to CDPH

Shellfish Samples

Collecting Shellfish Sample:

1. Collect a minimum of 15 large mussels, more if they are small
2. Rinse outside of shell, remove byssal threads, and shuck mussels placing tissue in #10 sieve and allow to drain for 5 minutes
3. Fill 600 mL beaker to at least 300 mL with shucked meat and thoroughly puree meat using blender
4. Pour approximately 10 mL pureed meat into 50 mL tube and pour remainder into 500 mL sample collection jar and refrigerate immediately

Preparing the Shellfish Extract:

1. Add 10 mL Jellett *Extraction Liquid* to tube containing 10 mL pureed shellfish and

- shake vigorously to ensure complete mixing
2. Place paper paint filter over a 500 mL beaker and pour shellfish mixture into filter. Allow to filter for 5 minutes
 3. Transfer shellfish extract filtrate from beaker into small vial, cap, label with date, location, and initials

★ This extract can be used for BOTH the ASP and PSP tests ★

Testing the Shellfish Extract: Domoic Acid/ASP (also refer to green Jellett instructions):

1. Open sealed envelope containing Domoic Acid test strip: ensure desiccant pouch is blue (discard test strip if desiccant is pink).
2. Add 1 mL of water to the vial provided (white cap).
3. Add 100 μ L of shellfish extract to vial containing 1 mL of water. Cap and shake thoroughly. Discard pipette.
4. Number the two buffer vials (red cap, green cap) "1" and "2" to avoid mixing them up
5. Tap small vials of buffer 3 times on hard surface. Place in rack and remove cap (red) from vial #1.
6. Add 100 μ L of the shellfish extract to the buffer solution using the new pipette provided (fill to black line).
7. Mix shellfish extract and buffer: insert pipette and fill and empty into buffer vial 3 times.
8. Add 100 μ L of the buffer/extract solution to the buffer vial #2 (green cap) using the pipette provided (black line).
9. Mix contents of second vial thoroughly: insert pipette and fill and empty into buffer vial 3 times.
10. Fill pipette to black line (100 μ L) with solution from second buffer vial.
11. Dispense into sample well of test strip (S). Discard pipette.
12. Record start time and wait 45 - 75 minutes before reading results.
13. Label front of diagnostic kit as shown at beginning of this protocol.

Interpreting Test Strip (also refer to Jellett instructions):

1. When time interval has expired, record current time on shellfish field sheet and observe diagnostic kit.
2. Use the Jellett strip control card with sample strips (included in the Jellett test kit package) to interpret the test results. The T-line becomes fainter as the toxin level increases.
3. Test strip **C-line** is **equal to or fainter** than Invalid test on Control Card: your test is **Invalid**.
4. Test strip **T-line** is **darker** than Positive T-line on control card: test is **Negative**.
5. Test strip **T-line** is **equal to or fainter** than Positive T-line on control card: test is **Positive**.
6. Record results and any observations on the field sheet. Record results on front of strip.
7. Take a digital photo of the Jellett test strip.
8. Place diagnostic kit in Ziploc bag, seal, and place in envelope with shellfish field sheet.

Documentation

1. make copies of all field sheets and retain copies; ship originals as described below
2. email a digital photo of all completed test strips to gregg.langlois@cdph.ca.gov

Shipping Samples:

- ◆ Place plankton field sample bottle in a Ziploc bag. Place plankton field sheet and all test strips in another Ziploc bag. Enclose both in a third bag and label "For EMB".
- ◆ Place shellfish field sheet in a Ziploc. Put all bags, the small vial of extract (when requested), and the 500 mL bottle of pureed shellfish in a shipping box with blue ice for shipment to CDPH via Next Business Morning delivery.

APPENDIX H. STATEMENTS OF AGREEMENT

STATEMENT OF AGREEMENT FOR
PUBLIC AGENCIES

The undersigned has read and understands the purpose of the *Conditionally Approved* classification of the commercial shellfish growing area at the Santa Barbara Lease M-653-02 Area and the conditions of its Management Plan, dated January 2015, and agrees to comply with the conditions and procedures set forth in the Management Plan

Signature

Name (print or type)

Agency

Date

Mail completed form to:

Environmental Management Branch
California Department of Public Health
850 Marina Bay Parkway, #G165
Richmond, CA 94804

STATEMENT OF AGREEMENT FOR HARVESTER

The undersigned has read and understands the purpose of the *Conditionally Approved* classification of the commercial shellfish growing area at the Santa Barbara Lease M-653-02 Area and the conditions of its Management Plan, dated January 2015, and understands that compliance with the conditions and procedures set forth in the Management Plan is mandatory as a condition of the Shellfish Growing Area Certification issued by the California Department of Public Health.

Signature

Name (print or type)

Agency

Date

Mail completed form to:

Environmental Management Branch
California Department of Public Health
850 Marina Bay Parkway, #G165
Richmond, CA 94804

MANAGEMENT PLAN FOR COMMERCIAL SHELLFISH GROWING AREA M-653-02
JANUARY 2015

APPENDIX I. RECORD OF CHANGES

TECHNICAL REPORT #	DATE	PAGE	CHANGE
03-01	4/3/2003	4	Added Appendix F: "Log of Changes to Document" to Table of Contents
03-01	4/3/2003	12	Changed location of primary rainfall gauge used to determine rainfall closures
03-01	4/3/2003	16, 17	Deleted requirement for the end-of-harvest call-in if within 2 hours of first call
03-01	4/3/2003	50	Added Appendix F – Record of Changes
04-02	2/1/2004	16	Revised rainfall closure threshold
04-02	2/1/2004	16, 19	Identified new primary rainfall gauge
04-02	2/1/2004	25	Revised reopening criteria
04-02	2/1/2004	24, 39	Added section on Live-Aboards and added Figure 3 – Calculated Safe Distances for Moored Boats
04-02	2/1/2004	24	Added section on harvester's responsibilities for wildlife prevention
04-02	2/1/2004	28, 49	Added section on Marine Biotoxin Monitoring and added Appendix E – Marine Biotoxin Monitoring
04-02	2/1/2004	35	Added Table 3 – Management Decision Criteria for Domoic Acid
04-19	10/26/2004	3, 14, 16, 25	Revised rainfall threshold and sampling requirements due to additional rainfall data evaluation
04-19	10/26/2004	45	Revised call-down contact list due to change in CDPH/PSU personnel
04-19	10/26/2004	28 – 30	Revised marine biotoxin monitoring section to reflect multiple species sampling requirements
06-03	1/6/2006	28	Added sampling requirements when a scheduled sample date is missed
06-03	1/6/2006	55	Added Appendix C - Notification of Shellstock Movement During a Growing Area Closure
07-03	1/10/07	16-17	Added language clarifying conditions and requirements for moving shellstock during rainfall closures
07-03	1/10/07	19	Clarified notification procedures for re-opening after rainfall closures and stressed growers' responsibility to obtain current, accurate information prior to resumption of

MANAGEMENT PLAN FOR COMMERCIAL SHELLFISH GROWING AREA M-653-02
JANUARY 2015

			harvesting.
--	--	--	-------------

APPENDIX I. RECORD OF CHANGES (continued)

TECHNICAL REPORT #	DATE	PAGE	CHANGE
07-03	4/1/07	29-31, 40-41	Modified biotoxin sampling requirements and management criteria to reflect current protocols.
08-03	1/1/08	29	Revised protocol for samples exceeding NSSP standards to reflect current policy
08-03	1/1/08	55-58	Added Appendix D: Wastewater Upset Response Procedures
09-03	1/1/09	27	Minor clarification of protocol for samples exceeding NSSP standards
12-03	1/1/12	22	Clarification of field audit requirement
13-03	1/4/13	16-17	Added Section IX.A.3 requirement of an SOP for movement of shellstock during rainfall closures.
13-03	1/4/13	26	Added Section XI.D.- Reopening when Sampling is Required .
13-03	1/4/13	56-59	Replaced Appendix C - Notification of Shellstock Movement During a Growing Area Closure (form) with template SOP for movement of shellstock during a closure.
14-03	1/30/14	12	Added Section VII – Company Certification
15-03	1/30/15	25-26	Removed Section X.F. -Requirement to contact WWTP's prior to and after harvest.