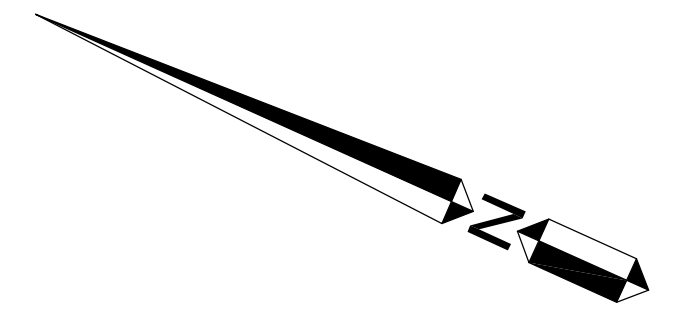


Central Coast Regional Water Quality Control Board  
Prosecution Team Evidence  
in the matter of  
Cease and Desist Order R3-2016-0015  
Exhibit 7



### DESIGN CRITERIA

**SANITARY SEWER SYSTEM FLOW ASSUMPTIONS:**

- MAX. FLOW TO TREATMENT SYSTEM = 4,630 GPD
- AVERAGE FLOW TO TREATMENT SYSTEM = 2,315 GPD
- FLOW TO GREASE INTERCEPTOR = 665 GPD

**PRIMARY TREATMENT (3-5,000 GAL SEPTIC TANKS W/ VBT AERATION)**

- PRIMARY INFLUENT BOD: 1,000 mg/L
- PRIMARY INFLUENT TSS: 400 mg/L
- PRIMARY INFLUENT AMMONIA: 50-80 mg/L

**SECONDARY TREATMENT (3-ORENCO TREATMENT PODS W/ RECIRCULATING TANK)**

- SECONDARY INFLUENT BOD: 250 mg/L
- SECONDARY INFLUENT TSS: 100 mg/L

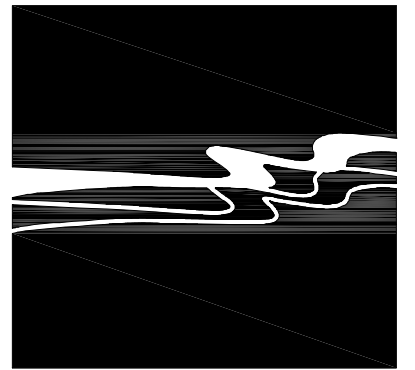
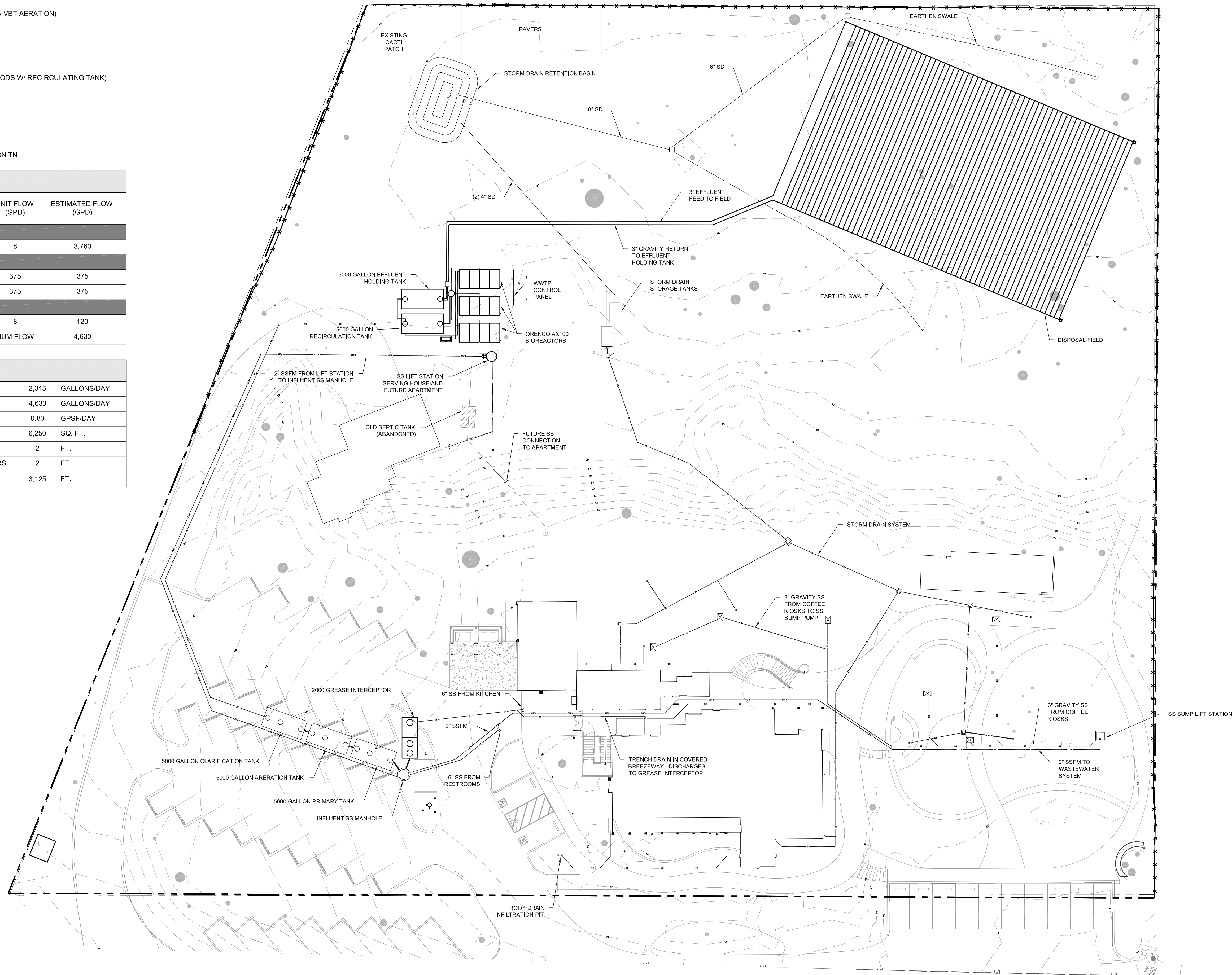
- FINAL EFFLUENT BOD: 30 mg/L
- FINAL EFFLUENT TSS: 30 mg/L
- FINAL EFFLUENT AMMONIA: 50-60% REDUCTION TN

#### WASTEWATER FLOW ESTIMATES

AREA	UNIT NUMBER	UNIT FLOW (GPD)	ESTIMATED FLOW (GPD)
<b>RESTAURANT</b>			
EQUIVALENT MEALS PER DAY	470	8	3,760
<b>RESIDENTIAL UNITS</b>			
3 BEDROOM/2 BATH	1	375	375
2 BEDROOM/1 BATH	1	375	375
<b>GENERAL</b>			
NUMBER OF EMPLOYEES	15	8	120
MAXIMUM FLOW			4,630

#### DISPOSAL FIELD CALCULATIONS

AVG. DAILY WW FLOW TO DISPOSAL FIELD	2,315	GALLONS/DAY
DISPOSAL FIELD CAPACITY	4,630	GALLONS/DAY
HYDRAULIC LOADING RATE TO DISPOSAL FIELD	0.80	GPSF/DAY
TOTAL DISPOSAL FIELD AREA	6,250	SQ. FT.
LINE SPACING BETWEEN WASTEFLOW LINES	2	FT.
EMITTER SPACING BETWEEN WASTEFLOW EMITTERS	2	FT.
TOTAL LINEAR FT. DISPOSAL DRIPLINE	3,125	FT.



**WALLACE GROUP®**

CIVIL AND TRANSPORTATION ENGINEERING  
CONSTRUCTION MANAGEMENT  
LANDSCAPE ARCHITECTURE  
MECHANICAL ENGINEERING  
PLANNING  
PUBLIC WORKS ADMINISTRATION  
SURVEYING / GIS SOLUTIONS  
WATER RESOURCES

612 CLARION COURT  
SAN LUIS OBISPO, CA 93401  
T 805 544-4011 F 805 544-4294  
www.wallacegroup.us

SIGNATURE

DATE SIGNED

These items and specifications, and the ideas and designs incorporated herein, are instruments of service prepared for the construction of work shown hereon and shall not be used in whole or in part for any other project without written authority of Wallace Group, a California Corporation.  
Copyright © 2007 Wallace Group, a California Corporation. All rights reserved. Copies of this drawing shall have this notice.

**CENTRALLY GROWN SITE PLAN**  
**CAMBRIA, CA**  
**WASTEWATER SYSTEM**

JOB #: 1137  
DESIGNERS: SJ  
DRAWN BY: SJ  
DATE: 3-5-15

DRAWING NO.

1

1 OF 1 SHEETS