

**STATE OF CALIFORNIA  
CALIFORNIA REGIONAL WATER QUALITY CONTROL BOARD  
LOS ANGELES REGION**

**MONITORING AND REPORTING PROGRAM NO. CI-10623  
FOR  
FORMER HIBCO FACILITY  
12620 CERISE AVENUE, HAWTHORNE, CALIFORNIA 90250**

**ENROLLMENT UNDER REGIONAL WATER BOARD  
ORDER NO. R4-2014-0187 (SERIES NO. 167)  
FILE NO. 21-051**

**I. MONITORING AND REPORTING REQUIREMENTS**

- A. Hibco Corporation (Discharger) shall implement this Monitoring and Reporting Program (MRP) on the effective date (December 10, 2021) under Los Angeles Regional Water Quality Control Board (Regional Water Board) General Waste Discharge Requirements (WDRs) Order No. R4-2014-0187. The first monitoring report shall be received by the Regional Water Board by **April 30, 2022**. Subsequent monitoring reports shall be received by the Regional Water Board according to the following schedule:

<u>Monitoring Period</u>	<u>Report Due</u>
January – March	April 30
April – June	July 30
July – September	October 30
October – December	January 30

- B. If there is no discharge or injection, during any reporting period, the report shall so state. By March 1 of each year, the Discharger shall submit an annual summary report to the Regional Water Board. The report shall contain both tabular and graphical summaries of the monitoring data obtained during the previous calendar year. In addition, the Discharger shall discuss the compliance record and the corrective actions taken or planned, which may be needed to bring the discharge into full compliance with the WDRs.
- C. The Discharger shall comply with requirements contained in Section G of Regional Water Board General WDRs Order No. R4-2014-0187 “*Monitoring and Reporting Requirements*”.

December 10, 2021

**II. DISCHARGE MONITORING PROGRAM**

The monitoring reports shall contain the following information for the injection activities:

1. Location map showing injection points used for amendment solution containing molasses, emulsified vegetable oil, sodium bicarbonate, and bioaugmentation culture;
2. A written and tabular summary of injection dates, depths of injection points, quantity, and concentration of amendment solution at each injection point, and total amount of molasses, emulsified vegetable oil, sodium bicarbonate, and bioaugmentation culture injected at the site; and
3. Records of visual inspection during the injection at each injection point.

**III. GROUNDWATER MONITORING PROGRAM**

A groundwater monitoring program shall be implemented to evaluate impacts associated with the injection activities. Groundwater samples shall be collected from monitoring wells ISB-1, ISB-2, ISB-3, MW-2, MW-6, MW-8, and MW-11 (Figure 1). The Discharger shall conduct a baseline sampling no longer than three months prior to the proposed injection, followed by the monitoring frequencies and parameters specified below for all seven monitoring wells:

<b>CONSTITUENT</b>	<b>UNITS</b>	<b>TYPE OF SAMPLE</b>	<b>MINIMUM FREQUENCY OF ANALYSIS</b>
Dissolved Oxygen	mg/L	grab	Baseline and quarterly after injection
Oxidation-Reduction Potential	millivolt	grab	Baseline and quarterly after injection
pH	standard unit	grab	Baseline and quarterly after injection
Specific Conductivity	mS/cm	grab	Baseline and quarterly after injection
Temperature	°C	grab	Baseline and quarterly after injection
Turbidity	NTU	grab	Baseline and quarterly after injection

CONSTITUENT	UNITS	TYPE OF SAMPLE	MINIMUM FREQUENCY OF ANALYSIS
Total Organic Carbon	mg/L	grab	Baseline and quarterly after injection
Total Dissolved Solids	mg/L	grab	Baseline and quarterly after injection
Sulfate	mg/L	grab	Baseline and quarterly after injection
Chloride	mg/L	grab	Baseline and quarterly after injection
Boron	mg/L	grab	Baseline and quarterly after injection
Nitrate and Nitrite	mg/L	grab	Baseline and quarterly after injection
Volatile Organic Compounds	µg/L	grab	Baseline and quarterly after injection
1,4-Dioxane	µg/L	grab	Baseline and quarterly after injection
Total Chromium and Hexavalent Chromium	µg/L	grab	Baseline and quarterly after injection
Dissolved Gases (methane, ethane, and ethene)	µg/L	grab	Baseline and quarterly after injection
<i>Dehalococcoides</i> species	cells/mL	grab	Baseline and quarterly after injection

Note: All groundwater monitoring reports shall include, at a minimum, the following:

- a. Well identification, date, and time of sampling;
- b. Sampler identification and laboratory identification; and
- c. Observation of groundwater levels, recorded to 0.01 feet mean sea level, and groundwater flow direction.

**IV. MONITORING FREQUENCIES**

Specifications in this MRP are subject to periodic revisions. Monitoring requirements may be modified or revised by the Executive Officer of the Regional Water Board based on review of the monitoring data submitted pursuant to the Regional Water Board General WDRs Order No. R4-2014-0187. Monitoring frequencies may be adjusted to a less frequent basis or parameters and locations dropped by the Executive Officer if the Discharger makes a request and the request is backed by statistical trends of monitoring data submitted.

**V. CERTIFICATION STATEMENT**

Each report shall contain the following completed declaration:

"I certify under penalty of law that this document, including all attachments and supplemental information, was prepared under my direction or supervision in accordance with a system designed to assure that qualified personnel properly gathered and evaluated the information submitted. Based on my inquiry of the person or persons who manage the system, or those persons directly responsible for gathering the information, the information submitted is, to the best of my knowledge and belief, true, accurate, and complete. I am aware that there are significant penalties for submitting false information, including the possibility of a fine and imprisonment.

Executed on the \_\_\_\_\_ day of \_\_\_\_\_ at \_\_\_\_\_

\_\_\_\_\_(Signature)

\_\_\_\_\_(Title)"

**VI. PUBLIC DOCUMENTS**

All records and reports submitted in compliance with Regional Water Board General WDRs Order No. R4-2014-0187 and MRP No. CI-10623 are public documents and will be made available for inspection during business hours at the office of the Regional Water Board upon request by interested parties. Only proprietary information, and only at the request of the Discharger will be treated as confidential.

Former Hibco Facility  
WDR Order No. R4-2014-0187  
Monitoring and Reporting Program No. CI-10623

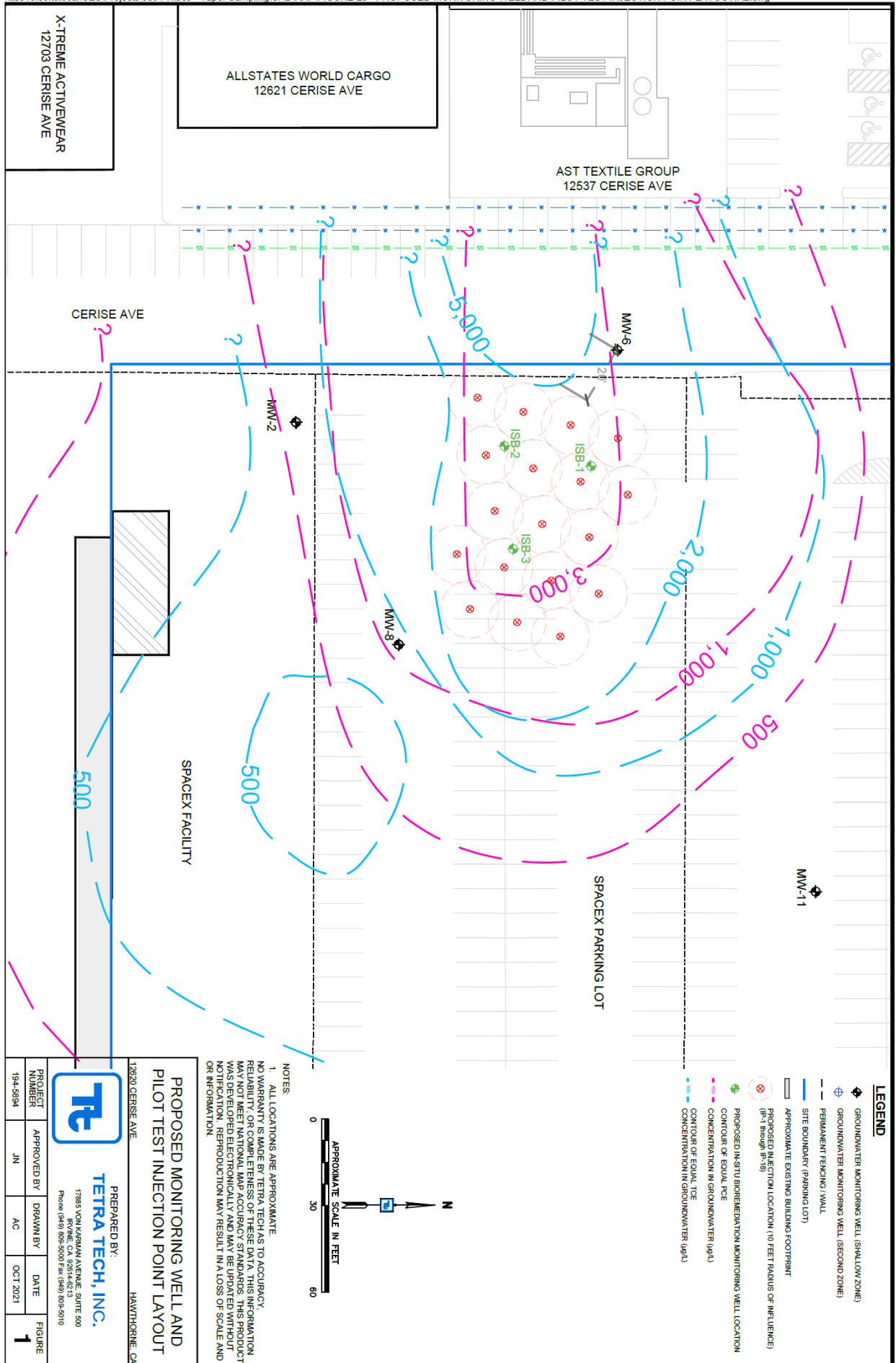
## **VII. ELECTRONIC SUBMITTAL OF INFORMATION**

The Discharger shall comply with the Electronic Submittal of Information (ESI) requirements by submitting all reports required under the MRP, including groundwater monitoring data in Electronic Deliverable Format (EDF), discharge location data, and searchable Portable Document Format (PDF) digital copies of monitoring reports to the State Water Resources Control Board GeoTracker database under Global ID WDR100053893.

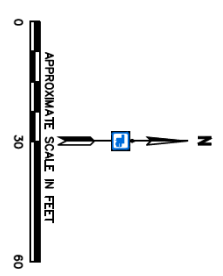
Ordered by:

Renee Purdy  
Executive Officer

Date: December 10, 2021



- LEGEND**
- ◆ GROUNDWATER MONITORING WELL (SHALLOW ZONE)
  - ◆ GROUNDWATER MONITORING WELL (SECOND ZONE)
  - - - PERMANENT FENCING / WALL
  - - - SITE BOUNDARY (PARKING LOT)
  - - - APPROXIMATE EXISTING BUILDING FOOTPRINT
  - ◆ PROPOSED IN-SITU BIOREMEDIATION MONITORING WELL LOCATION (IP-1 through IP-18)
  - CONTOUR OF EQUAL TCE
  - CONTOUR OF EQUAL PCE
  - CONCENTRATION IN GROUNDWATER (µg/L)
  - CONCENTRATION IN GROUNDWATER (µg/L)



**NOTES**

1. ALL LOCATIONS ARE APPROXIMATE.

NO WARRANTY IS MADE BY TETRA TECH AS TO ACCURACY, RELIABILITY, OR COMPLETENESS OF THESE DATA. THIS INFORMATION MAY NOT MEET NATIONAL MAP ACCURACY STANDARDS. THIS PRODUCT WAS DEVELOPED ELECTRONICALLY AND MAY BE UPDATED WITHOUT NOTIFICATION. REPRODUCTION MAY RESULT IN A LOSS OF SCALE AND OR INFORMATION.

**PROPOSED MONITORING WELL AND PILOT TEST INJECTION POINT LAYOUT**

12620 CERISE AVE  
HAWTHORNE, CA

**TETRA TECH, INC.**  
17365 VON KARMAN AVENUE, SUITE 500  
IRVINE, CA 92614-6213  
Phone: (949) 595-5000 Fax: (949) 859-5010

PROJECT NUMBER	APPROVED BY	DRAWN BY	DATE	FIGURE
194-5894	JN	AC	OCT 2021	1

PREPARED BY: **Tf**