

STATE OF CALIFORNIA
CALIFORNIA REGIONAL WATER QUALITY CONTROL BOARD, LOS ANGELES REGION

ORDER NO. 86-59

AMENDING

WASTE DISCHARGE REQUIREMENTS
FOR
AZUSA LAND RECLAMATION COMPANY, INC.
(Azusa Western Landfill)
(File No. 59-102)

The California Regional Water Quality Control Board, Los Angeles Region finds:

1. Azusa Land Reclamation Company, Inc. discharges wastes under waste discharge requirements contained in Resolution No. 60-22, adopted by this Regional Board on February 11, 1960. A Monitoring and Reporting Program for Azusa Western Landfill was issued on July 28, 1972.
2. Azusa Land Reclamation Company, Inc., a subsidiary of Southwestern Portland Cement Company, a corporation, has filed a report of waste discharge and supplementary information with this Board and has applied for revised waste discharge requirements for the continued operation of Azusa Western Landfill located at 1201 West Gladstone Street, Azusa, California.

The application for renewed waste discharge requirements is required by the California Administrative Code, Title 23, Chapter 3, Subchapter 15, which became effective on November 26, 1984.

3. Azusa Western Landfill is situated within a large gravel pit from which sand and gravel has been and continues to be quarried by Transit Mixed Concrete Company.
4. The discharge of Class III wastes (nonhazardous solid wastes) has been taking place along the southern edge of the gravel pit as shown on the attached map. In addition, the portion of the gravel pit extending below elevation 355 feet is, and has been, backfilled with inert wastes. The disposal of wastes at this site was initiated in the 1950's.

July 9, 1986
Revised July 28, 1986

Azusa Land Reclamation Company, Inc.

5. Azusa Western Landfill developed a ground water monitoring program which included construction of new monitoring wells at the southwest, southeast, and northeast corners of the gravel pit property. As a result of the monitoring program, trichloroethylene (TCE) concentrations as high as 1,100 parts per billion (ppb) were found in the vicinity of the landfill. In addition, tetrachloroethylene (PCE), 1,1-dichloroethylene (DCE) 1,1,1-trichloroethane (TCA) were found in concentrations as high as 700, 120 and 210 ppb, respectively. The California Department of Health Services action levels for these constituents in a domestic water supply are: TCE - 5.00 ppb, PCE - 4.00 ppb, DCE - 6.0 ppb and TCA - 200.00 ppb. The ground water monitoring program has been designated as a "Verification Monitoring Program" in accordance with Subchapter 15.

Pending the full implementation at this site of the new requirements of Title 23, Chapter 3, Subchapter 15 of the California Administrative Code, as adopted on November 27, 1984, and applicable to Class III Landfills, the disposal of Class III wastes should be limited to areas already used for these wastes.

6. On July 15, 1985, Clean-up and Abatement Order No. 85-2 was issued by the Executive Officer of this Regional Board to Southwestern Portland Cement Company requiring that Azusa Western Landfill discontinue returning gas condensate to the landfill. By letter dated October 15, 1985, Azusa Land Reclamation Co., Inc. gave notice that it had been successful in ceasing the practice of condensate return to the landfill.

The aqueous phase of the gas condensate is being disposed of at Triple J Pacification Facility, Vernon, (for treatment and ultimate disposal at a legal disposal site), and the hydrocarbon phase goes to a General Portland Cement plant at Lebec for reuse.

7. The Azusa disposal site is within the Main San Gabriel Hydrologic Subarea and is underlain by recent alluvium.
8. The Board adopted a revised Water Quality Control Plan for Los Angeles River Basin on November 27, 1978. The Plan contains water quality objectives for ground water of the Main San Gabriel Hydrologic Subarea. The requirements contained in this Order, as they are met, will be in conformance with the goals of the Water Quality Control Plan.

Azusa Land Reclamation Company, Inc.

9. Ground water within Main San Gabriel Hydrologic Subarea is beneficially used for municipal and domestic supply, agricultural supply, industrial service and process supplies and freshwater replenishment.
10. The project is an "on going project". As such it is exempt from the provisions of the California Environmental Quality Act in accordance with Section 15261 (b), Chapter 3, Title 14, California Administrative Code.

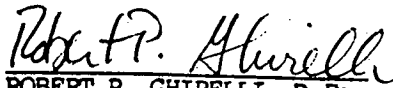
The Board has notified the discharger and interested agencies and persons of its intent to amend waste discharge requirements for this discharge.

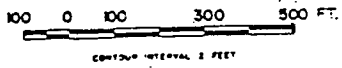
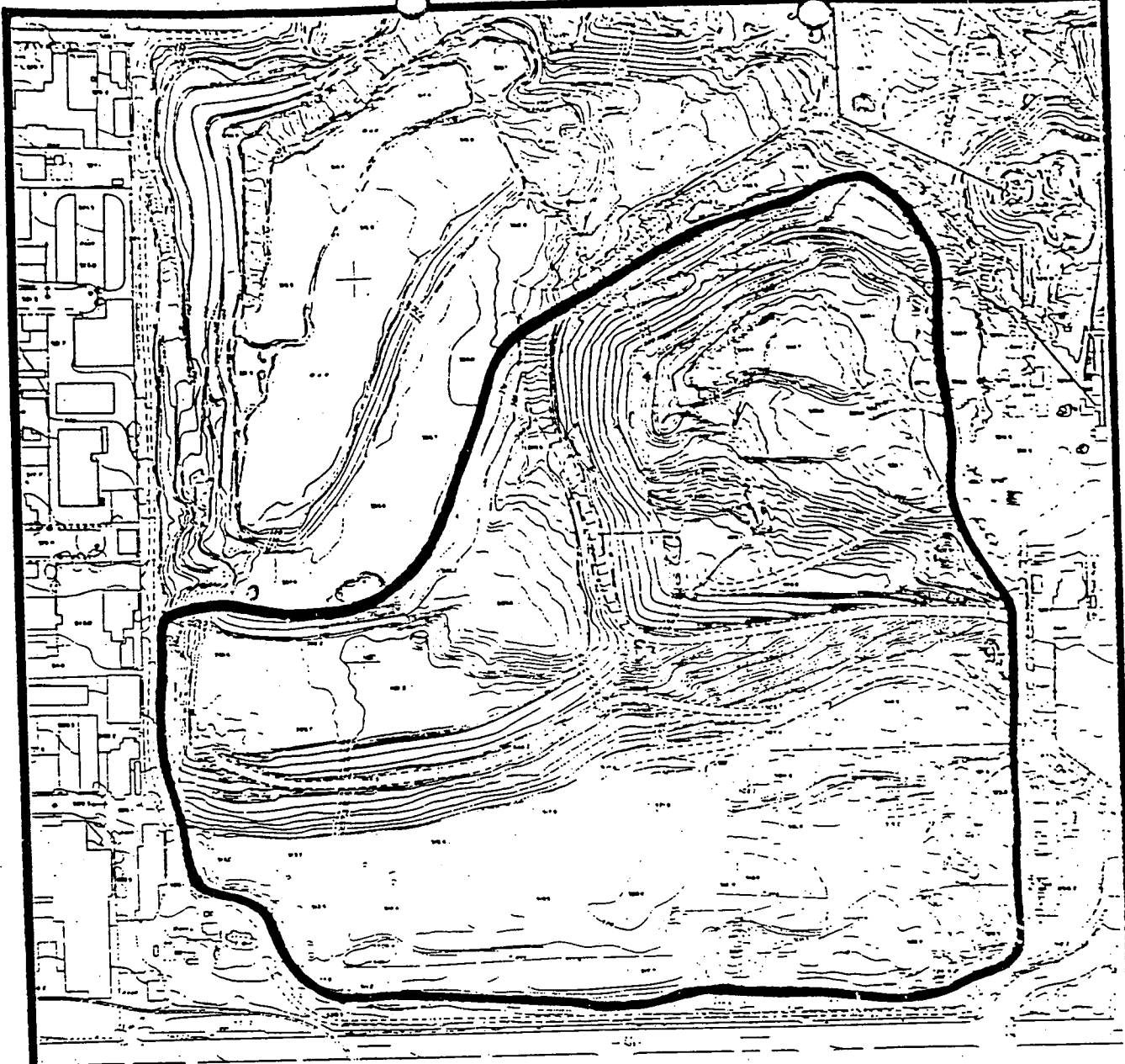
The Board, in a public meeting, heard and considered all comments pertaining to the tentative amended requirements.

IT IS HEREBY ORDERED , that Resolution No. 60-22 is amended to include the following:

1. The disposal of Class III wastes shall be limited to areas where Class III wastes are currently being, or have previously been, placed, as delineated on the attached map, unless and until other areas are first approved by the Board and prepared in accordance with all applicable requirements of California Administrative Code, Title 23, Chapter 3, Subchapter 15, adopted November 27, 1984.
2. The discharge of condensate from the landfill gas recovery system into the landfill is prohibited.
3. All other requirements of Resolution No. 60-22 shall remain in effect.
4. Clean-up and Abatement Order No. 85-2, issued on July 15, 1985, is hereby rescinded.

I, Robert P. Ghirelli, Executive Officer, do hereby certify that the foregoing is a full, true and correct copy of an Order adopted by the California Regional Water Quality Control Board, Los Angeles Region on July 28, 1986.


ROBERT P. GHIRELLI, D. Env.
Executive Officer



AZUSA WESTERN LANDFILL
CURRENT DISPOSAL AREA
(Outlined in black)