
Los Angeles Regional Water Quality Control Board

September 24, 2015

Ms. Gina Dorrington
Wastewater Utility Manager
City of Ventura
Ventura Water Reclamation Plant
P.O. Box 99
Ventura, CA 93002-0099

APPROVAL OF THE RESIDENTIAL AND LIMITED COMMERCIAL RECYCLED WATER FILL STATION PROGRAM, COVERAGE UNDER WATER RECLAMATION REQUIREMENTS FOR THE CITY OF VENTURA, VENTURA WATER RECLAMATION FACILITY (WRR ORDER NO. 87-45, CI NO. 6190, NPDES ORDER R4-2013-0174, CI NO. 1822)

Dear Ms. Dorrington:

The Los Angeles Regional Water Quality Control Board (Regional Water Board) received a letter dated August 19, 2015 and a document titled "Information to Support the Ventura Water Reclamation Facility Fill Station Program" from the City of Ventura (City) requesting approval of the Residential and Commercial Recycled Water Fill Station Program (Water Fill Station Program). On September 17, 2015, the Regional Water Board received the updated document "Information to Support the Ventura Water Reclamation Facility Mobile Reuse Program" which incorporated the comments from the Regional Water Board and the State Water Resources Control Board, Division of Drinking Water (DDW). In light of the current statewide drought emergency, the City requests a "fast-track" approval of the Water Fill Station Program that involves distribution of tertiary-treated recycled water for irrigation and dust control. The irrigation users include local residents and the City's Parks, Recreation and Community Partnerships Department. The proposed users for dust control are AERA Energy LLC and the Ventura County Department of Transportation.

The recycled water that will be used in the Water Fill Station Program will be produced at the Ventura Water Reclamation Facility (Ventura WRF) in Ventura, CA. The production, distribution, and reuse of recycled water from Ventura WRF are currently regulated under Water Reclamation Requirements (WRRs) Order No. 87-45, adopted by this Board on April 27, 1987. This Order permits the City to use recycled water from the Ventura WRF for irrigation of landscaping, parks, school yards, green belt areas, golf courses, agricultural areas, and pastures.

The Water Fill Station Program will be located at the Ventura WRF located at 1400 Spinnaker Drive in Ventura and will be covered under Order No. 87-45. All customers must complete a brief education training program and sign an agreement certifying that they acknowledge and understand the recycled water usage restrictions, prior to handling the Title 22 tertiary-treated recycled water. Once training is complete, residential customers may receive between one and three hundred gallons of recycled water per visit and water trucks from the City or other approved non-residential users may receive up to three thousand gallons per visit.

CHARLES STRINGER, CHAIR | SAMUEL UNGER, EXECUTIVE OFFICER

Within the draft "Information to Support" document included with the August 19th letter, the City submitted for review (1) a program description, (2) draft Recycled Water Use Application, Agreement, and Training Verification Forms, and (3) procedures for operation of the fill station. Pursuant to California Water Code 13523, this package was reviewed by DDW.

To receive permission to use additional treated effluent as recycled water, the City submitted a change petition to the Division of Water Rights requesting a decreased flow rate to the Santa Clara River Estuary. Protection of the estuary ecosystem, which supports endangered species, has been the focus of intense study over the last decade and public review of the proposed new recycled water use was necessary. Near term approval from Division of Water Rights is anticipated.

Order 87-45 does not allow for the delivery of recycled water for non-potable use for dust control. The Regional Water Board staff has considered expansion of the uses under Order 87-45 to include dust control and the expansion of the distribution of recycled water for irrigation to include the Recycled Water Fill Station Program. The Regional Water Board staff has reviewed the information submitted and approves the proposed Recycled Water Fill Station Program, as well as the new use dust control, with the condition that the City also receives approval from DDW.

Given the drought and in the interest of expediting the approval process, the implementation of the Water Fill Station Program and the additional dust control use will not require an immediate amendment to the existing Order before this project can proceed. This program will be reflected in the upcoming revision to the WRRs to include the new users and expansion of the recycled water program.

If you have any questions, please contact Cris Morris at (213) 620-2083 or Elizabeth Erickson at (213) 576-6665.

Sincerely,



Samuel Unger, P. E.
Executive Officer

Enclosure: City of Ventura Letter without Enclosure, Request for Approval of the Residential and Commercial Recycled Water Fill Station Program, Coverage under Reclamation Requirements for the City of Ventura's Wastewater Reclamation Facility (WRF) (Order No. 87-45), dated August 19, 2015.

cc: Environmental Protection Agency, Region 9, Permits Branch (WTR-5)
NOAA, National Marine Fisheries Service
Department of Interior, U.S. Fish and Wildlife Service
Department of Fish and Game, Region 5
State Water Resources Control Board, Office of Chief Counsel
State Water Resources Control Board, Division of Drinking Water- Jeff Densmore
State Water Resources Control Board, Drinking Water Field Operations – Southern
California- Shu-Fang Orr
California Department of Water Resources, Water Recycling Program – Nancy King
California State Parks and Recreation
State Coastal Conservancy
Ventura County, Environmental Services
Ventura County, Department of Public Health
Ventura Regional Sanitation District
The City of Oxnard- Dan Rydberg
Fox Canyon Groundwater Management Agency- Gerhard Huebner
United Water Conservation District- Michael Solomon
Water Replenishment District of Southern California - Ted Johnson,
West Basin Municipal Water District - Uzi Daniel
Main San Gabriel Basin Watermaster – Carol Williams
Wishtoyo/Ventura Coast Keeper-Steve Weiner
Heal the Bay
Environment Now
Los Angeles Waterkeeper
Natural Resources Defense Council
Sierra Club
Southern California Coastal Water Research Project
Kennedy Jenks - Lauren Everett

Trusted life source for generations



August 19, 2015

Cristine Morris
Senior WRC Engineer
Los Angeles Regional Water Quality Control Board
320 West 4th St., Suite 200
Los Angeles, CA 90013

Subject: Request for Approval of the Residential and Commercial Recycled Water Fill Station Program, Coverage under Water Reclamation Requirements for the City of Ventura's Wastewater Reclamation Facility (WRF) (Order No. 87-45)

Dear Ms. Morris:

Due to current and anticipated drought conditions over the coming years, the City of San Buenaventura (Ventura, City) is expecting increased frequency and duration of potable water shortages. As such, the City is proposing to expand the use of recycled water permitted under Order No. 87-45, which allows for the delivery of recycled water for irrigation of golf courses, cemeteries, freeway landscapes, and landscapes in other areas where the public has similar access or exposure. Thus the City would like to implement a truck hauling program (Fill Program) for recycled water where commercial and residential entities can obtain water from the Ventura WRF in Ventura, CA.

In light of the current statewide drought emergency, the City requests a "fast-track" approval of the Fill Program that involves distribution of tertiary-treated recycled water to, and at minimum, recycled water deliver to the City of Ventura Parks, Recreation and Community Partnerships Department (Parks Department), which has requested additional recycled water to irrigate park trees. Without recycled water the irrigation of park trees may result in violation of drought conservation requirements, the loss of park trees, and associated economic impacts.

The production, distribution, and reuse of recycled water from Ventura WRF are currently regulated under Water Reclamation Requirements (WRR) Order No. 87-45, adopted by this Board on April 27, 1987. This Order permits the use of recycled water from the Ventura WRF for irrigation of golf courses, cemeteries, freeway landscapes, and landscapes in other areas where the public has similar access or exposure.

The permit however does not currently allow for the delivery of recycled water via tanker trucks for non-potable uses, including sewer flushing, street cleaning, and dust control, which is the focus of this additional information. The recycled water delivered to users is tertiary treated recycled water, as described in California Code of Regulations, Title 22. A change petition was submitted in February 2015 requesting expanded use to include dust control and trucking of recycled water and has had to undergo a lengthy CEQA process. This additional use will

1400 Spinnaker Drive, PO Box 99
Ventura, CA 93002-0099

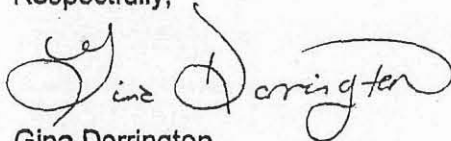
increase the maximum reclaimed water use identified in the wastewater change petition (VW0083) by 1%, or from 1.97MGD to 1.99 MGD. Conversely, this additional use will reduce the maximum reclaimed water discharge to the Santa Clara River Estuary by .03 MGD, from 5.83 MGD to 5.80 MGD.

The Fill Program will be located at the Ventura WRF facility, located at Spinnaker Drive in Ventura and will be covered under Order No. 87-45. All customers must complete a training program on the safe use of recycled water prior to handling Title 22 tertiary-treated recycled water, and once training is complete, customers may receive an approved amount of recycled water per visit.

No increase in the delivery capacity of the existing WRF is necessary. Ventura Water plans to add a commercial and residential managed recycled water distribution program by tanker truck as part of the currently operating WRF and will work with local Regional Water Quality Control Board staff to implement the full residential and commercial program as described in the attached document, Information to Support the Ventura WRF Fill Program.

The Fill Program is an acceptable improvement to the existing recycled water distribution program permitted under Order No. 87-45. In the interest of expediting the approval process, the implementation of the Fill Program will not require an immediate amendment to the existing Order before this project can proceed because it only constitutes new users that have now been approved, and not a new use; however, this program will be reflected in an upcoming revision to the WRRs to include the new users and expansion of the recycled water program.

Respectfully,



Gina Dorrington
Wastewater Utility Manager
Ventura Water

Enclosure(s)

cc: Shana Epstein, General Manager, Ventura Water
Samuel Unger, P.E., Executive Officer, Los Angeles Regional Water Quality Control Board
Jeff Densmore, P.E., State Water Resources Control Board (SWRCB), Division of Drinking Water
Elizabeth Erickson, Engineering Geologist, Los Angeles Regional Water Quality Control Board
Mitchell Moody, Mitchell Moody, P.E., SWRCB, Division of Water Rights
Matthew McCarthey, SWRCB, Division of Water Rights
Melinda Talent, Ventura County Department of Environmental Health, Drinking Water
Lauren Everett, Water Resources Project Manager, Kennedy/Jenks Consultants

Kennedy/Jenks Consultants

2775 North Ventura Road, Suite 100
Oxnard, California 93036
805-973-5700
FAX: 805-973-1440

Information to Support the Ventura Water Reclamation Facility Mobile Reuse Program

September 2015

Prepared for
Ventura Water
P.O. Box 99
Ventura, CA 93001
Office: 805-677-4127

K/J Project No. 1444238.01

Table of Contents

Section 1:	Project Overview	1-1
1.1	Rules and Regulations	1-2
1.1.1	California Code of Regulations, Title 22.....	1-2
1.1.2	Los Angeles Regional Water Quality Control Board Order 87-045	1-3
1.1.3	Los Angeles Regional Water Quality Control Board Order R4-2013-0174 (NPDES No. CA0053651)	1-3
Section 2:	Wastewater Treatment	2-1
2.1	Raw Wastewater	2-1
2.2	Treatment Processes	2-2
2.3	Treatment Plant Effluent Quality	2-4
2.4	Plant Reliability Features	2-5
2.5	Supplemental Water Supply.....	2-5
2.6	Monitoring, Sampling, and Reporting	2-6
2.6.1	Monitoring	2-6
Section 3:	Recycled Water Use	3-1
Section 4:	Recycled Water Fill Program.....	4-1
4.1	General Requirements	4-1
4.2	Location.....	4-1
	Figure 3 – Schematic of Ventura WRF Mobile Fill Station	4-2
	Figure 4 – Designated Truck Route	4-3
4.3	Use Areas	4-4
4.3.1	Allowable Uses.....	4-4
4.3.2	Non Allowable Uses	4-4
4.4	Regulatory Compliance	4-5
4.4.1	Producer.....	4-5
4.4.2	Distributor.....	4-5
4.4.3	User.....	4-6
4.5	User Guidelines and Orientation/Training	4-6
4.5.1	Distributor.....	4-6
4.5.2	Users.....	4-7
4.5.3	Controlling Access/Monitoring Use	4-8
4.6	Contingency Plan	4-8
4.6.1	Notifications.....	4-8
4.7	Recycled Water Handling and Use Requirements/Precautions for Truck Handling.....	4-8
4.7.1	Recycled Water User Training	4-8
4.7.2	Procedures to Obtain Recycled Water	4-9

Table of Contents (cont'd)

4.7.3 Specific Provisions 4-9

References..... 4-12

 Current Recycled Water Users 1

 Proposed New Recycled Water Users..... 2

List of Appendices

- A – Recycled Water User Location and Maps
- B – Recycled Water Use Permit (Order 87-045)
- C – Water Reuse Permit for Mobile Users

Section 1: Project Overview

Due to current and anticipated drought conditions over the coming years, the City of San Buenaventura (Ventura, City) is expecting increased frequency and duration of potable water shortages. As such, the City is proposing to expand the use of recycled water permitted under Recycled Water Use Permit (Order 87-045), which allows for the delivery of recycled water for irrigation of golf courses, cemeteries, freeway landscapes, and landscapes in other areas where the public has similar access or exposure. The City has received multiple requests to obtain recycled water from their existing WRF by entities such as AERA Energy LLC, and the Ventura County Transportation Department, as well as residents within the community of Ventura. All entities have requested the use of recycled water, as opposed to potable water, for their dust control and irrigation needs. One customer of the City for example, the City of Ventura Parks, Recreation and Community Partnerships Department (Parks Department), has requested additional recycled water to irrigate park trees. Without recycled water the irrigation of park trees may result in violation of drought conservation requirements and/or the loss of park trees. The majority of these proposed additional uses would be via additional truck trips to load the trucks with the recycled water and deliver to these uses within the City limits. The City has also received multiple requests from residential homeowners requesting to use the recycled water to irrigate their private residences, as opposed to irrigating with potable water. Thus the City would like to implement a truck hauling program for recycled water where commercial and residential entities can obtain water from the Ventura WRF.

Appendix A provides a listing of the new users and provides for their location.

The City would be in charge of overseeing recycled water distribution as part of the currently operating WRF, and no expansion of the WRF is required for the intended uses of this program. To do so, the City must request a wastewater change petition from the State Water Resources Quality Control Board reflecting the additional uses, as well as consulting with the Division of Drinking Water and Los Angeles Regional Water Quality Control Board to approve the new uses will be handled in a manner that protects public health and safety.

As part of the project, Ventura Water is proposing to expand their Recycled Water Program (RWP), permitted under Recycled Water Use Permit (Order 87-045), which allows for the delivery of recycled water for irrigation of golf courses, cemeteries, freeway landscapes, and landscapes in other areas where the public has similar access or exposure. The permit however does not currently allow for the delivery of recycled water via tanker trucks for non-potable uses and dust control, which is the focus of this additional information. The recycled water delivered to users is tertiary treated recycled water, as described in California Code of Regulations, Title 22. The RWP intends to offset unnecessary depletion of potable water supplies with allowable non-potable uses.

No increase in the delivery capacity of the existing WRF is necessary. Ventura Water plans to add a commercial and residential managed recycled water distribution program for mobile users as part of the currently operating WRF.

The purpose of this report is to provide information on the Ventura Water WRF and planned mobile filling station to demonstrate the ability to reliably serve tertiary treated recycled water, as described in Title 22 that is in compliance with the WRF permit requirements.

Specifically, this report describes:

- water quality and planned uses of recycled water,
- monitoring and reporting programs to ensure that Ventura Water stays in compliance with the regulations of the WRF,
- elements of the expanded use program that pertain to safe and compliant distribution of recycled water from the WRF to users, and
- activities associated with employee training and permitting and inspection of users.

1.1 Rules and Regulations

1.1.1 California Code of Regulations, Title 22

Recycled water in California is regulated by the State Water Resources Control Board (SWRCB) Division of Drinking Water (DDW)¹ and individual Regional Water Quality Control Boards (RWQCBs). Requirements are contained in the California Code of Regulations, Title 22, Division 4, Chapter 3 Water Recycling Criteria (DDW, 2014). Recycled water produced at the Ventura WRF meets Title 22 requirements for tertiary treated recycled water, defined as:

"Disinfected tertiary recycled water" means a filtered and subsequently disinfected wastewater that meets the following criteria: (a) The filtered wastewater has been disinfected by either: (1) A chlorine disinfection process following filtration that provides a CT (the product of total chlorine residual and modal contact time measured at the same point) value of not less than 450 milligram-minutes per liter at all times with a modal contact time of at least 90 minutes, based on peak dry weather design flow; or (2) A disinfection process that, when combined with the filtration process, has been demonstrated to inactivate and/or remove 99.999 percent of the plaque forming units of F-specific bacteriophage MS2, or polio virus in the wastewater. A virus that is at least as resistant to disinfection as polio virus may be used for purposes of the demonstration. (b) The median concentration of total coliform bacteria measured in the disinfected effluent does not exceed an MPN of 2.2 per 100 milliliters utilizing the bacteriological results of the last seven days for which analyses have been completed and the number of total coliform bacteria does not exceed an MPN of 23 per 100 milliliters in more than one sample in any 30 day period. No sample shall exceed an MPN of 240 total coliform bacteria per 100 milliliters."

¹ The Drinking Water Program for the California Department of Public Health (CDPH) moved to the SWRCB and was renamed the Division of Drinking Water as of July 1, 2014.

1.1.2 Los Angeles Regional Water Quality Control Board Order 87-045

Los Angeles RWQCB Order 87-045 (Recycled Water Use Permit [Order 87-045]), provided as Appendix B, regulates the conditions under which the City is allowed to distribute recycled water to users. *Recycled Water Use Permit (Order 87-045)* indicates that recycled water may be used for the irrigation of golf courses, cemeteries, freeway landscapes, and landscapes in other areas where the public has similar access or exposure. Order 87-045 also includes recycled water quality monitoring and reporting requirements. Allowed recycled water use areas and provisions under which users are permitted and inspected are described by the Order.

Under Recycled Water Use Permit Order 87-045, the City is the party responsible for ensuring recycled water is of sufficient quality and for notifying the LARWQCB of any violations. It is the City's responsibility to document effluent quality and file reports on effluent quality and water usage by permitted users in reports to the Regional Board. The City is also responsible for inspecting and documenting that recycled water users are in compliance with order requirements.

1.1.3 Los Angeles Regional Water Quality Control Board Order R4- 2013-0174 (NPDES No. CA0053651)

The Ventura WRF has been granted a National Pollutant Discharge Elimination System (NPDES) permit to discharge tertiary treated wastewater to the Estuary from the LARWQCB. The Ventura WRF currently discharges to the SCR Estuary under existing NPDES permit (CA0053651) which was adopted by the LARWQCB on March 6, 2008, and updated in November of 2013. The next update of the permit is due in 2019.

Section 2: Wastewater Treatment

2.1 Raw Wastewater

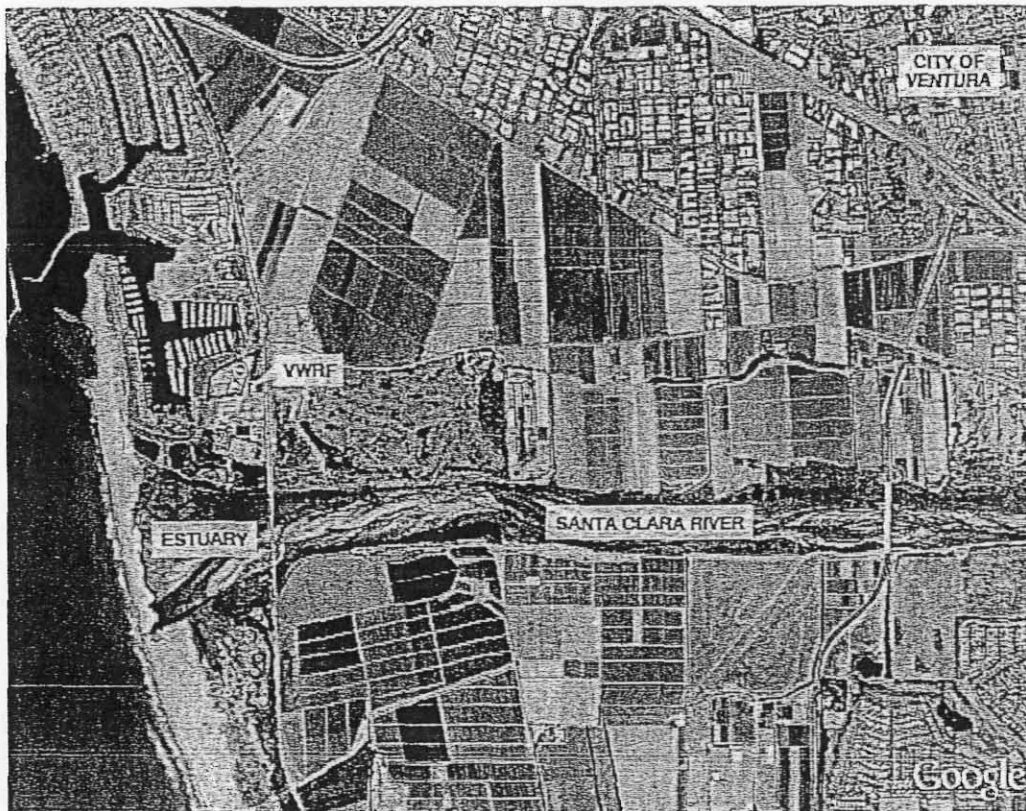
The City owns and operates the Ventura WRF, which discharges tertiary treated municipal wastewater to the Santa Clara River Estuary (Estuary) just south of the City near the mouth of the Santa Clara River (Figure 1). The design capacity of the WRF is 14 mgd but discharge is limited to 9 mgd². Discharge to the Estuary is permitted under NPDES Order No. R4-2008-0012, CA0053651.

The Ventura WRF also currently produces Title 22 tertiary treated water that is used for local landscape irrigation that is regulated by separate Waste Discharge Requirements and Recycled Water Permit (Order 87-045). Recycled water from the Ventura WRF is used for general irrigation of golf courses, parks and similar landscape areas. Existing recycled water customers include: golf courses - Olivas Links Golf Course and Buenaventura Golf Course; parks - Marina Park; and landscape irrigation near Olivas Drive and in the Harbor area. If regulatory limits are met, Ventura WRF recycled water is approved for unrestricted irrigation of golf courses, parks, playgrounds, school yards, and other landscaped areas with similar public access (unrestricted reuse).

The remaining treated wastewater is conveyed via the effluent transfer station (ETS) to a 20-acre system of wildlife ponds and flows from west to east through "Bone," "Snoopy" and "Lucy" (see Figure 2) prior to being discharged through the outfall junction structure to the Santa Clara River Estuary via an effluent channel. There are losses due to evaporation and percolation in the wildlife ponds prior to final discharge of effluent to the Estuary. The average annual effluent flow (as measured at the ETS) from 2007 to 2014 was 8.5 mgd (Ventura Water Annual Reports, 2007-2014). From the wildlife ponds the flow discharges into the Santa Clara River Tidal Prism and treated effluent is used for landscape irrigation.

² The design flow of 14 mgd is limited to 9 mgd discharge to the Santa Clara River Estuary, the 2000-2008 annual average flow, at which time the Regional Water Board mandated studies to determine if the estuary water quality and beneficial uses were enhanced by the effluent.

Figure 1 Ventura Water WRF Location



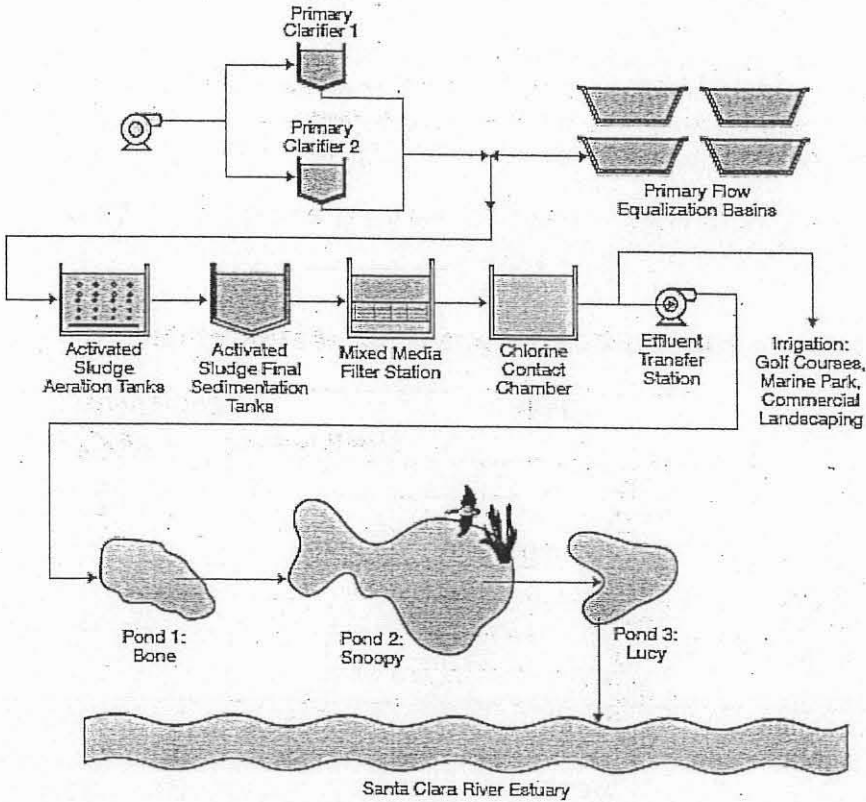
2.2 Treatment Processes

Figure 2 provides a process flow schematic of the Ventura Water WRF. Additional information is also available in the Ventura Water NPDES Order No. R4-2008-0012, CA0053651.

Treatment processes employed at the Ventura WRF include: influent screening, grit removal, primary sedimentation, primary flow equalization, activated sludge secondary biological treatment, including biological nitrification, de-nitrification, tertiary effluent filtration chlorination and de-chlorination.

Process solids are treated by anaerobic digestion to class B standards, dewatered and sent to Toland Road Landfill in Santa Paula, California and processed further to class A standards. Solids are both heat treated and landfill applied. Screenings and grit removed during the treatment process are disposed of at the Toland Road Landfill.

Figure 2 Ventura Water Process Flow Diagram



Source: Corollo, 2014

2.3 Treatment Plant Effluent Quality

The treatment plant effluent quality reliably complies with the Ventura Water NPDES Order No. R4-2008-0012, CA0053651, which details the Agency's wastewater treatment and reporting requirements (see Table 1). The measured concentration parameters in Ventura Water WRF's effluent have been consistently below the NPDES permit limits.

Table 2 provides the recycled water quality limitations for certain constituents as identified in the Recycled Water Use Permit (Order 87-045).

Table 1 Current 2008 NPDES Permit Effluent Limitations

Parameter	Units	Effluent limitations		
		Monthly Ave	Weekly Ave	Daily Max
5-day BOD	mg/L	20	30	45
TSS	mg/L	15	40	45
pH	standard units	---	---	---
Oil and Grease	mg/L	10	---	15
Settleable Solids	mg/L	0.1	---	0.3
Total Residual Chlorine	mg/L	0.1	---	---
MBAS	mg/L	0.5	---	---
Summer Ammonia Nitrogen (May – October)	mg/L	0.045	---	0.30
Winter Ammonia Nitrogen (November – April)	mg/L	0.079	---	0.53
Nitrate + Nitrite as Nitrogen	mg/L	10	---	62
Nitrite as Nitrogen	mg/L	1	---	---
Nitrate as Nitrogen	mg/L	10	---	---
Selenium	ug/L	2.9	---	8.2
Copper	ug/L	4.2	---	8.8
Mercury	ug/L	0.051	---	0.10
Lead	ug/L	7.0	---	14
Silver	ug/L	0.71	---	2.2
Zinc	ug/L	45	---	107

Source: Los Angeles RWQCB NPDES Permit No. CA0053651 for Ventura WRF

Table 2 Recycled Water Quality Requirements per Recycled Water Use Permit (Order 87-045)

Constituent	Unit	Tertiary Treated Recycled Water
Total Dissolved Solids	mg/L	3,000
Chloride	mg/L	500
Sulfate	mg/L	1,000
Boron	mg/L	--

Source: Los Angeles RWQCB Recycled Water Use Permit (Order 87-045)

2.4 Plant Reliability Features

Each treatment process is comprised of multiple unit processes and equipment to provide redundancy so that plant effluent reliably complies with its NPDES permit effluent limits even when unit processes or equipment are out of service. For over 10 years, the level of conventional pollutants in the plant effluent is well below the tertiary treatment limits. All of the conventional treatment processes lead to the well-controlled reliable production of secondary treated effluent that is then further treated and monitored as part of the WRF. This section summarizes the existing plant reliability features, which are an integral part of consistent recycled water production.

The chlorination system has redundant equipment and instrumentation so that the plant effluent and recycled water production are reliably chlorinated in compliance with the permit limits. Specifically, these systems include multiple chlorine feed pumps and analyzers, process flow meters and level and pressure instruments, and a variety of devices and inputs that are transmitted to the supervisory control and data acquisition (SCADA) system. The SCADA system is used to control and monitor the process and equipment and also transmits alarms to warn the operations staff if equipment is not functioning properly.

Alarm information is received at 15 SCADA monitoring stations distributed throughout the treatment plant. Ventura Water has 14 state certified wastewater treatment plant operators which are authorized to receive and mitigate process alarms. Maintenance staff consists of three California Water Environment Association certified electrical and instrumentation technicians and six California Water Environment Association certified mechanical technicians. The Ventura WRF is staffed 24/7 by operations staff members and either a mechanic or electrician is on-stand-by duty during non-regular business hours.

2.5 Supplemental Water Supply

The project will not include a supplemental water supply. In the event that recycled water was not available; customers will revert to using potable water.

2.6 Monitoring, Sampling, and Reporting

2.6.1 Monitoring

Ventura Water completes a wide variety of sampling and analysis of the wastewater treatment processes to comply with its NPDES requirements. The Ventura Water staff collects all samples needed at the City of San Buenaventura Wastewater Laboratory. All analyses for purposes of the NPDES permit and the Safe Drinking Water Act (SDWA) reporting or for industrial waste monitoring conforms to the current requirements of 40 CFR Part 136, "Guidelines Establishing Test Procedures for the Analysis of Pollutants" or of 40 CFR Part 141, "National Interim Primary Drinking Water Regulations."

There are four monitoring locations for taking sample data at the WRF as described in NPDES Order No. R4-2008-0012, CA0053651.

Location 1 – Influent Pump Station (IPS): This location receives all raw wastewater flow to the treatment plant unless failure of pumping systems occurs. If such failure occurs, or should storm flows exceed the capacity of this primary station, all or part of the influent flow will be diverted to a standby facility, which has no provision for sampling or flow measurement. Such events are infrequent and a duplicate influent sampling programs is not warranted. IPS coordinates are 34° 14'21.45" N /119° 115' 25.53" W.

The samplers used here are the ISCO 6712R which is programmed flow proportion. The sampler is located in the main stream of the influent channel prior to the headwork adjacent to Harbor Boulevard.

Sampling is performed here for compliance monitoring and for process control. IPS is analyzed daily for pH, 5-day BOD, COD, suspended solids; weekly for ammonia; monthly for TKN; quarterly grab for metals and semi-annual priority pollutants.

Location 2 – Flow Equalization Basin – Primary Effluent (EPE); All effluent from the Primary Clarifier passes through this location. This sample station can be bypassed and raw sewage delivered directly to the Activated Sludge System for routine maintenance or emergency. EPE coordinates are 34° 14'29.83" N /119° 15'27.88" W. ISCO Model 6712R sampler programmed to collect samples at uniform time intervals proportional to the flow to the secondary treatment process was used for sample collection.

Sampling is performed at this location is for process control. Analyses performed daily at this location are 5-day BOD, COD, pH, suspended solids; weekly for ammonia; monthly for TKN and MBAS.

Location 3 – Activated Sludge Process Effluent: This site is at the end of the 36 inch line from the Activated Sludge Final Sedimentation (FS) Tanks and before the Mixed Media Filter Station Pump Wet Well. FS coordinates are 34° 14'22.89" N /119° 15'27.45" W. ISCO Model 6712R programmed to collect samples at uniform time intervals proportional to the flow to the Activated Sludge System was used for sample collection. Sampling at this site is for process control.

Analyses performed are: daily 5-day BOD, COD, suspended solids; weekly for ammonia, nitrate, nitrite and monthly for TKN and MBAS. The stream from the Activated Sludge System is monitored continuously by a process turbidimeter.

Location 4 – Effluent Transfer Station (ETS): This location follows the plant's filtration and disinfection. From here all treated effluent is pumped to the Wildlife Ponds. ETS coordinates are 34° 14'21.45" N /119° 15' 31.26" W.

ISCO Model 6712FR programmed to collect samples at uniform time intervals proportional to the flow leaving the Mixed Media Filter Station was used for sample collection. Sampling is conducted here for compliance monitoring and for process control. ETS is analyzed daily for pH, 5-day BOD, COD, turbidity, chlorine residual, temperature, settleable solids, suspended solids and total dissolved solids. Weekly analyses include ammonia, nitrate and nitrite, chloride, sulfate, grease and oil, and ammonia.

Monthly analyses are phosphate, TKN, total phosphorous, MBAS, boron, fluoride, sodium, calcium, magnesium, potassium, chlorophyll A, chronic bioassay, and metals. Analyses conducted semi-annually are phenols, pesticides, 17 dioxin congeners and the remaining priority pollutants. The flow from the Filtration and Disinfection processes is also continuously monitored here by a process turbidimeter.

Grab samples for bacteriological examination, pH, total chlorine residual and temperature are collected daily at 11:00 AM from the Chlorine Contact Chamber and Effluent Transfer Station. Five receiving sample stations, designated R1 through R4 and R5 (formerly L5) within the Santa Clara Tidal Prism are specified by the RWQCB in the NPDES Permit CA0053651. Location coordinates are:

R1 – 34° 13'55.58"N/119° 15'27.59" W.

R2 – 34° 13'47.37"N/119° 15'43.15" W.

R3 – Variable at the mouth of the river.

R4 – 34° 14'04.15"N/119° 15'54.19" W.

R5 – 34° 14'01.63"N/119° 15'23.79" W.

Water quality observations and field analyses performed at these sites are water color, odor, visible sludge, foam, oil or grease, pH, temperature (air and water), salinity, chlorine residual and dissolved oxygen.

Weekly grab samples are analyzed for total coliform, fecal coliform and total hardness. Monthly analyses performed are total phosphorous, nitrogen compounds, metals, and chlorophyll A.

Ventura Water will conduct additional sampling and monitoring as required in its role as the recycled water producer under Recycled Water Use Permit (Order 87-045). The Ventura Water staff will collect and analyze the recycled water monitoring samples at the required sampling frequency to comply with Recycled Water Use Permit (Order 87-045).

Section 3: Recycled Water Use

Recycled water from the Ventura WRF is used for general irrigation of golf courses, parks and similar landscape areas. Existing recycled water customers are listed in below.

- Buena Ventura Golf Course
- Olivas Links Golf Course
- MBL Golf Course LLC
- Harbortown Point
- Ventura Port District (2 sites)
- Marina Park
- MBL Properties Stormwater Detention Basin
- MBL Olivas at Bunsen
- MBL Olivas at Seaborg
- Olivas Adobe
- Four Points Sheraton Hotel
- San Buenaventura Outside Irrigation Contracts
- Holiday Inn Express

The recycled water demand varies seasonally with minimum demands in the winter and maximum demands in the summer. Monthly demands range from approximately 0.07 mgd to 1 mgd, with an average demand of 0.5 mgd. The demands vary significantly across the recycled water customers. Two golf course customers, Olivas Links Golf Course and the Buenaventura Golf Course, account for between 78 percent and 91 percent of the total recycled water demand.

Due to current and anticipated drought conditions over the coming years, the City is expecting increased frequency and duration of potable water shortages. As such, the City is proposing to expand the use of recycled water permitted under Recycled Water Use Permit (Order No. 87-045), which allows for the delivery of recycled water for irrigation of golf courses, cemeteries, freeway landscapes, and landscapes in other areas where the public has similar access or exposure.

The City has received multiple requests to obtain recycled water from WRF to serve commercial and industrial entities, as well as residents within the community. All entities have requested the use of recycled water, as opposed to potable water, for their dust control and irrigation needs.

These additional uses will increase recycled water use from the existing 0.5 mgd to about 1.25 mgd, well within the ability of the facility to provide the additional volumes.

Refer to Appendix A for identification of the users and the specific location for their use of the recycled water.

Section 4: Recycled Water Fill Program

4.1 General Requirements

The mobile filling station is the only component necessary to deliver recycled water off the Ventura Water WRF plant site. No other transmission methods are planned at this time. Off-site cross-connection controls and related contingency plans are not necessary.

The mobile filling station will be supplied by a four inch flow meter and recycled water line as shown in Figure 3.

The Ventura WRF filling station location is identified as map ID location number 15 on Figure B in Appendix A).

4.2 Location

Only one tanker truck filling station is planned for distribution of recycled water from the Ventura Water WRF on Spinnaker Drive. This filling station will be located within Ventura Water WRF plant premises, on the main plant road east of the chlorine contact tanks, as shown in Figure 4. To access the filling station, trucks will enter and exit the plant from Spinnaker Drive. The designated truck route through the plant to the filling station is also shown on Figure 4.

Figure 3 – Schematic of Ventura WRF Mobile Fill Station

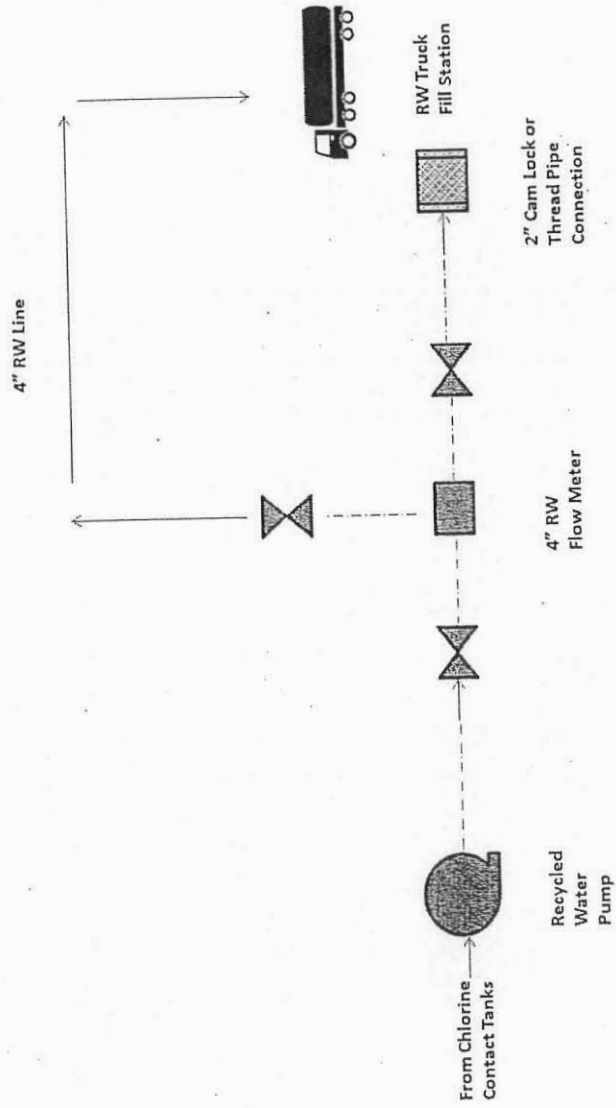
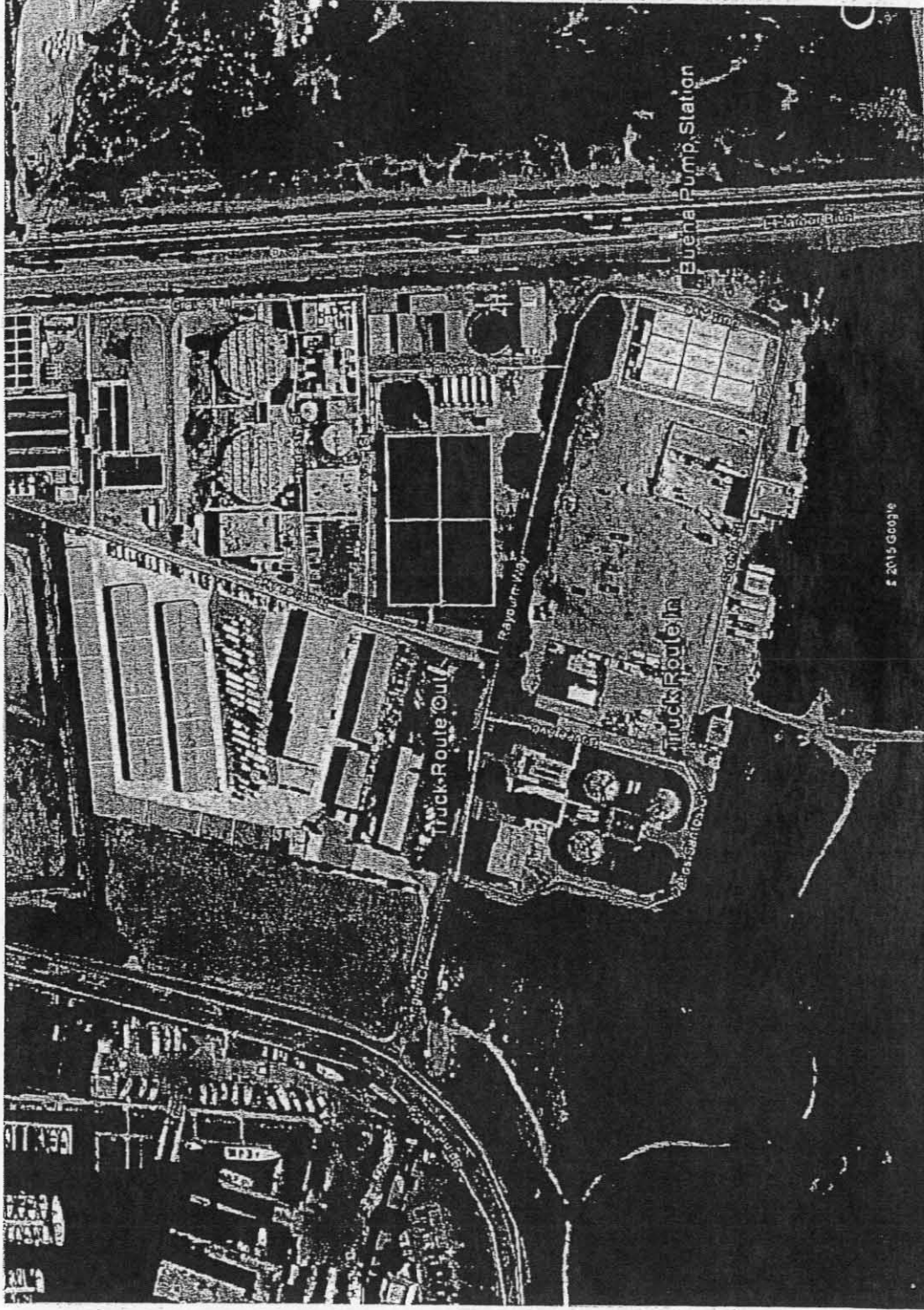


Figure 4 – Designated Truck Route



4.3 Use Areas

4.3.1 Allowable Uses

In compliance with California Title 22 Disinfected-23 Recycled Water regulations and Recycled Water Use Permit (Order 87-045), uses for recycled water in the WRF will be limited to:

Irrigation of golf courses, cemeteries, freeway landscapes, and landscapes in other areas where the public has similar access or exposure. Tertiary treated water is safe for human contact and can be used on food crops.

Potential geographic area of recycled water applications will be limited to the current service area for Ventura Water WRF.

The general requirements for the WRF are described in Appendix B – Recycled Water Use Permit (Order 87-045) and summarized below:

Customers interested in getting recycled water must apply to Ventura Water for a "Water Reuse Permit for Mobile Users" (included in Appendix C).

The Use Permit will require that the recycled water be used/delivered only in the Ventura Water service area.

Before trucks can be filled for the first time, all truck owners and/or drivers shall be required to attend a brief on-site orientation/training in order to learn about using the truck filling station and how to properly handle and use of recycled water. Users shall be required to repeat this training annually.

Trucks will sign in at the front desk of the Ventura Water WRF and show their Recycled Water Use Permit prior to filling.

The following sections describe how Ventura Water will meet the WRF regulatory requirements for permitting, training, preventing cross-contamination, and protecting workers, the public and the environment.

4.3.2 Non Allowable Uses

Tertiary treated recycled water is not allowable for:

- Drinking
- Cooking
- Bathing or showering
- Filling swimming pools or spas
- Children's water toys
- Plumbing it to household water system
- Discharging to gutters & storm drains

To minimize public contact with recycled water and to inform the public where recycled water is in use, as required by Recycled Water Use Permit (Order 87-045), conspicuous warning signs shall be posted at intervals around the use area unless public access is otherwise restricted.

Recycled water signage is currently posted at all recycled water distribution points within the Ventura Water WRF facility where tertiary treated water is used. Example signage is shown below. Areas of use outside the Ventura Water WRF facility will abide by the signage requirements of the Division of Drinking Water.

Examples of Recycled Water Signage



4.4 Regulatory Compliance

4.4.1 Producer

Ventura Water will establish procedures to track actual water deliveries from the plant to each permitted user. Ventura Water will be responsible for providing proper training to all employees involved in the WRF regarding in the handling and distribution of recycled water according to requirements in Recycled Water Use Permit (Order 87-045), Ventura Water WRF's guidelines and other relevant program requirements. Ventura Water will provide recycled water quality monitoring results and recycled water usage records for each user for regulatory reporting requirements.

4.4.2 Distributor

Ventura Water, as the distributor, will be responsible for following and implementing stipulations contained in Sections B, C and D of Recycled Water Use Permit (Order 87-045); see Appendix B.

4.4.3 User

A user will be responsible for following and implementing stipulations contained in Sections B, C and D of the Recycled Water Use Permit (Order 87-045), in addition to the requirements in the "Water Reuse Permit for Mobile Users" (see Appendix C).

4.5 User Guidelines and Orientation/Training

4.5.1 Distributor

Ventura Water will provide annual user training in proper compliance in accordance with their existing WRF procedures. Before user trucks can fill for the first time, all truck owner and/or drivers are required to attend an on-site orientation/training in order to learn about using the filling station and the proper handling and use of recycled water.

Ventura Water's User Guidelines for the WRF are as follows:

1. Workers should be informed that although recycled water has been treated to lower health risks, bacterial and viral contamination is still present and may potentially cause illness or infection. Contact with recycled water by ingestion, inhalation of mist, or on cuts or abrasions should be avoided and the precautionary measures listed below should be carefully reviewed and followed.
2. Do not drink recycled water or use it for food preparation. Additionally, the tanker truck driver must notify workers and/or the public when recycled water is used at a site and tell them that they are not to drink recycled water or use it for food preparation. Avoid irrigating when the public is present to minimize contact.
3. Workers should not be subjected to recycled water sprays, mists or aerosols.
4. Precautionary measures should be taken to minimize worker contact with constituents of recycled water.
5. Workers should wear protective clothing, when more than casual contact with the recycled water is anticipated.
6. Safe drinking water should be supplied for workers. Where bottled water is provided, the water should be in contamination proof containers and protected from recycled water and dust.
7. Workers should not apply recycled water by hand held nozzles or other hand held devices that can produce sprays, mists or aerosols.
8. Recycled water users should apply hand sanitizer or wash their hands with soap and potable water after working with recycled water and especially before eating or smoking.
9. Tanker truck drivers should be equipped with an adequate first aid kit. Cuts or abrasions should be promptly washed, disinfected, and bandaged.

10. Recycled water shall not be allowed to spray onto external drinking water fountains.
11. Recycled water shall not be applied where it could contact or enter passing vehicles, building areas where food is handled or eaten, or storm drains.
12. Recycled water users shall take adequate measures to prevent overspray, ponding or runoff of recycled water from the authorized recycled water use area. Ponding and runoff are not allowed and must be minimized at all times.
13. There shall be no irrigation or impoundment of recycled water within a minimum of 50 feet of any domestic (drinking water) well.
14. Vehicles used for transportation and distribution of recycled water must have watertight valves and fittings, must not leak, and tanks must be cleaned of contaminants prior to use. A truck or tank that has contained material from a septic tank or cesspool shall not be used to convey recycled water.
15. Recycled water must not be introduced into any permanent piping system and no connection shall be made between the tank truck and any part of a potable water system. Offsite storage of recycled water is not allowed.
16. Tanker trucks used to transport recycled water should not be used to carry potable water.
17. Tanker trucks shall be constructed for the purpose of conveying water without leaking or spilling.
18. Truck operators shall take care to inspect fill and discharge hoses regularly to ensure they do not leak and that recycled water is not discharged when hoses are disconnected. Hose bibs are not allowed.

4.5.2 Users

Users shall be required to comply with the stipulations in the Recycled Water Use Permit (Order 87-045) and complete Ventura Water's "Water Reuse Permit for Mobile Users" (Appendix C). Prior to receiving and distributing recycled water, all users must attend training sessions by Ventura Water on the safe handling of recycled water. The appropriate recycled water signage shall be displayed on tanker trucks, as provided by Ventura Water.

In the event that a user fails a site inspection, Ventura Water shall identify the reason(s) for the failure and withdraw the Recycled Water Use permit until such time as the user is able to complete the annual training again. In the event of a second failure the user shall be prohibited from using recycled water for a period of thirty days and required to complete the annual training again. Upon the third inspection resulting in failure to use recycled water according to the permit the user shall not be permitted to use recycled water. Ventura Water has the authority to revoke the recycled water user privilege at any time where violations warrant it.

4.5.3 Controlling Access/Monitoring Use

No user will be provided with recycled water unless the truck driver presents the authorized User Permit issued by Ventura Water. Copies of the Water Reuse Permit for Mobile Users and Recycled Water Use Permit (Order 87-045) shall be provided to the user by Ventura Water and the user must have these available for inspection at all times.

Ventura Water will meter recycled water usage by each user.

Random, periodic inspections of permitted recycled water Users are required while recycled water use is in progress to ensure compliance with use prohibitions as described in Recycled Water Use Permit (Order 87-045). It is the responsibility of Ventura Water to perform these inspections. The user inspection checklist already in use for current operations of the WRF, which will also be applied to users of recycled water from Ventura Water, is included in the submitted materials for Recycled Water Use Permit Order 87-045).

4.6 Contingency Plan

In instances when Ventura Water's WRF recycled water quality does not comply with the criteria of Recycled Water Use Permit (Order 87-045), the truck fill program will cease until such time as recycled water becomes compliant. Delivery of recycled water to users will be suspended and notification signs that water is non-compliant will be placed at the truck fill station. Delivery of recycled water will not be resumed until the recycled water quality again becomes compliant.

4.6.1 Notifications

If recycled water that does not meet the coliform standards is served the customers will immediately be contacted by telephone. If the water has not been used customers shall return the water to the Ventura Water WRF. If the water has been used, the Agency will obtain a description of the use and assess if the water use was consistent with its quality. In the event that water use is inconsistent with the recycled water quality delivered as described in Title 22, the Agency will report such use by email to the RWQCB and Division of Drinking Water as soon as possible, as well as in the monthly reports.

4.7 Recycled Water Handling and Use Requirements/Precautions for Truck Handling

4.7.1 Recycled Water User Training

Prior to obtaining recycled water from the Ventura WRF, haulers will need to undergo appropriate training on the use and transport of such water. Below is a summary of the training that will be offered as well as specific direction on the operation of the recycled water fill station.

Haulers will be required to, at a minimum, fill out a recycled water application form and complete the Water Reuse Permit for Mobile Users Form. Users must obtain Ventura Water approval. Collection and storage containers shall have Ventura Water's Recycled Water Notice stickers placed on them to ensure everyone is aware recycled water is stored in the container and the water is not suitable for human consumption. It is illegal to connect recycled water containers

and equipment to buried irrigation systems or to onsite drinking water supply. If an illegal connection does occur there is the potential for the drinking the recycled water. Violators are subject to fines up to \$1,000 and loss of pickup privileges.

Recycled water shall not be discharged to the street gutter or storm drain system. After working with recycled water, remember to apply hand sanitizer or wash hands with soap and domestic drinking water, especially before eating or smoking. DO NOT DRINK recycled water, place in swimming pools, or use it for food preparation. Take precautions to avoid contact with food while using recycled water. Wash vegetables with domestic water prior to eating or cooking (the majority of the vegetables in the grocery stores are irrigated with recycled water). No one shall play with or drink recycled water. Ventura Water may conduct site visits to ensure your proper use of recycled water and to ensure the health and safety of your family and the public.

4.7.2 Procedures to Obtain Recycled Water

Recycled water users must complete the use agreement and bring it to the Ventura WRF fill station during designated hours for new customer sign-ups (see Appendix C). Hours will be posted online and at the WRF site. The on-duty attendant will provide required training in the proper use of recycled water and procedures for collection, issue you a wallet card, and answer any questions you may have. During training users will be provided with Recycled Water Notice stickers that need to be placed on all containers used to transport and store recycled water. After training is complete and stickers have been installed on the containers, users will be able to pick up recycled water during the designated residential fill station "open" hours, posted on the City's website and at the WRF. Users will be required to show the attendant the wallet card you received at the time of training. This wallet card cannot be shared with others. All users must receive training to ensure they are informed of the use requirements. During each pickup, the attendant will scan the bar code that is on back of the wallet card and will enter the amount of recycled water you are collecting.

4.7.3 Specific Provisions

1. These truck hauling requirements are for the use of Title 22 recycled water produced by the Ventura WRF and are for the use of landscape irrigation and dust control pending final approval of the State Water Resources Quality Control Board Division of Drinking Water and the Los Angeles Regional Water Quality Control Board. All other non-irrigation uses, including but not limited to street sweeping, pressure washing, soil compaction, and sewer flushing, must be submitted to the Ventura WRF prior to use for determination of SWRCB Division of Drinking Water and Regional Water Quality Control Board permit applicability and approval.
2. The requirements for truck hauling listed below are the minimum requirements that must be met. Ventura Water may add any other requirements or criteria specific to its own program needs. Ventura Water WRF staff may, from time to time, conduct inspection visits of the truck end use facilities to ensure compliance with these requirements.
3. Ventura Water shall keep track of each and every individual user or entity applying for truck hauling use.

4. Ventura Water shall keep daily records for each truck load dispensed, including: a) volume of recycled water delivered to each individual reuse site, b) location of reuse site, and c) type of reuse (e.g., irrigation, dust control, etc.). This information must be summarized on a monthly basis for each individual reuse site within 30 days of the end of each calendar month.
5. Ventura Water shall adequately control the point of distribution to prevent unauthorized access. Offsite storage of recycled water is not allowed.
6. Before trucks can be filled with recycled water for the first time, all truck owners and/or drivers are required to attend a brief on-site ("tail-gate") orientation/training, conducted by Ventura Water staff, in order to learn about using the filling station and the proper handling and use of recycled water. Offsite filling stations are not allowed.
7. Each truck that hauls recycled water must have either purple stickers or magnetic placards on the sides and back of the vehicle that identify it as carrying recycled water, containing the words and symbol for "Do Not Drink".
8. Truck drivers or others in contact with the vehicles shall not drink recycled water or use it for food preparation. Truck drivers shall notify workers and/or the public when recycled water is used at a site and tell them that they are not to drink recycled water or use it for food preparation.
9. Recycled water users should apply hand sanitizer or wash their hands with soap and potable water after working with recycled water and especially before eating or smoking.
10. Precautions should be taken to avoid food coming into contact with recycled water while the reuse site is still wet.
11. Truck drivers should be equipped with an adequate first aid kit. Cuts or abrasions should be promptly washed with potable water, disinfected, and bandaged.
12. Recycled water shall not be allowed to spray onto potable water drinking water fountains or faucets.
13. Recycled water shall not be applied where it could contact or enter passing vehicles, buildings, areas where food is handled or eaten, storm drains, or surface water.
14. Adequate measures must be taken to prevent recycled water overspray, ponding, or run off from the authorized reuse area. Ponding and runoff are not allowed and must be minimized at all times.
15. It is strongly recommended that all water trucks carry a push broom on the vehicle to spread out ponded or puddled recycled water to facilitate evaporation.
16. There shall be no irrigation or impoundment of recycled water within a minimum of 50 feet of any domestic (drinking water) well.

17. Recycled water users must comply with all requirements and restrictions specified by the Regional Board and the Water Recycling Criteria in Title 22 of the California Code of Regulations.
18. Vehicles used for transportation and distribution of recycled water must have water-tight valves and fittings, and must not leak.
19. Spills of recycled water must be immediately reported to Ventura WRF along with the circumstances involved with the incident.
20. Vehicle storage tanks must be cleaned of contaminants prior to filling with recycled water to prevent contamination of the recycled water. A truck or tank that has contained material from a septic tank, cesspool, or hazardous waste (within the meaning of federal or State of California definitions of hazardous or toxic materials, wastes or substances or poison) cannot be used to convey recycled water. The use of vehicle storage tanks for the storage and transport of recycled water must comply with all applicable federal, State of California, and local requirements.
21. Recycled water shall not be introduced into any permanent piping system and no connection shall be made between the filled tank truck and any part of a potable water system. Offsite storage of recycled water is not allowed.
22. Tank trucks used to transport recycled water should not be used to carry potable water for potable water purposes (i.e., drinking or washing). Once a recycled water hauling vessel, it cannot be converted back to hauling for potable hauling purposes.
23. If these tank trucks are to be filled with potable water for irrigation, they must be filled through an air-gap prior to filling the truck. No direct connection to the potable system will be allowed for recycled water use, even with the use of a backflow prevention device. Use a separate fill hose for recycled water that is clearly marked with either purple paint or labeling. Do not switch back and forth between potable water and recycled water using the same hose. Hose bibs are not allowed.

References

California Regional Water Quality Control Board, Los Angeles Region, National Pollution Discharge Elimination System Permit No. CA0053651.

California Regional Water Quality Control Board, Los Angeles Region, Water Reclamation Requirements for City of San Buenaventura Water Reclamation Facility, Recycled Water Use Permit (Order 87-045).

Division of Drinking Water (DDW). 2014. California Division of Drinking Water Regulations Related to Recycled Water. June 2014

Division of Drinking Water (DDW). 2001. Guidelines for the Preparation of an Engineering Report for the Production, Distribution and Use of Recycled Water. March 2001

Appendix A – Recycled Water User Location and Maps

Current Recycled Water Users

Recycled water from the Ventura WRF is used for general irrigation of golf courses, parks and similar landscape areas. Existing recycled water customers (and their locations) are listed in Table 1 and on Figure A.

Table 1 - Current Recycled Water Users

Map ID No. ⁽¹⁾	Recycled Water User	Location (Lat/Long)	Section, Township, Range
1	Buena Ventura Golf Course	34.237827°, -119.208869°	S20, T2N, R22W
2	Olivas Links Golf Course	34.241005°, -119.253587°	S23, T2N, R22W
3	MBL Golf Course LLC	34.242424°, -119.207441°	S17, T2N, R22W
4	Harbortown Point	34.251905°, -119.266464°	S14, T2N, R23W
5	Ventura Port District (2 sites)	a) 34.249185°, -119.258440°	S14, T2N, R23W
		b) 34.245041°, -119.257187°	S14, T2N, R23W
6	Marina Park	34.253536°, -119.267317°	S15, T2N, R23W
7	MBL Properties Stormwater Detention Basin	34.241908°, -119.207405°	S17, T2N, R22W
8	MBL Olivas at Bunsen	34.243037°, -119.210090°	S17, T2N, R22W
9	MBL Olivas at Seaborg	34.243318°, -119.211213°	S17, T2N, R22W
10	Olivas Adobe	34.244004°, -119.242033°	S13, T2N, R23W
11	Four Points Sheraton Hotel	34.226334°, -119.257675°	S26, T2N, R23W
12	San Buenaventura Outside Irrigation Contracts	34.240611°, -119.261065°	S23, T2N, R23W
13	Holiday Inn Express	34.248885°, -119.258425°	S14, T2N, R23W

Source: www.earthpoint.us

Note (1) Map identification numbers correspond to Figure A.

Proposed New Recycled Water Users

Proposed new recycled water users include the following (summarized on Figure B):

AERA Energy, LLC

AERA Energy, LLC (AERA); an oil and gas production facility with multiple locations within California, including an onshore facility that covers approximately 4,300 acres in Ventura County (see Figure C). AERA is requesting recycled water for dust control purposes on some of its oilfield operations to minimize their use of potable water for the same purpose.

AERA's Ventura lease property is map ID location number 14 on Table 2 and Figure B.

Contact information:

Kim L. Drews
Aera Energy LLC | Ventura Field
Office: (805) 648-8547 | Cell: (805) 701-3613
9/80B Schedule

Ventura County Department of Transportation

The Ventura County Department of Transportation (Department) is responsible for planning, designing, funding, building, operating and maintaining approximately 544 miles of roadway, bridges, drainage and related transportation facilities in Ventura County. The Department is requesting to utilize recycled water for dust control and maintenance of unimproved, earth, shoulder areas that are used as staging areas for construction projects and for emergency equipment and personnel. They are proposing to designate 2 water trucks that hold 3,000 gallons each for the recycled water application. The locations of the proposed construction areas are located on multiple medians and shoulders, located throughout Ventura and provided in Table 2, and on Figure B.

Contact information:

Raul Gallo, P. E.
Division Manager – Transportation Department
(805) 672-2132
Raul.Gallo@ventura.org

Table 2 - Ventura Department of Transportation Proposed Recycled Water Locations

Map ID No.	Recycled Water Location	Location (Lat/Long)	Section, Township, Range
14	AERA Energy, LLC	34.315273°, -119.289925°	S17, 18, 19, 20, 29, 30, T3N, R22W 13,14,15,16,17,18,19,20,21,22,23,24,25,26,27,28,29,30, T3N, R23W
15	Ventura WRF Filling Station	34.239692, -119.258869	S21, T2N, R23W
16	Harbor Blvd.	34.264304, -119.269869	S10, T2N, R23W
17	Gonzales Road	34.219255, -119.236437	S25, T2N, R23W
18	Doris Avenue	34.208689, -119.229735	S31, T2N, R22W
19	5 th Street	34.197549, -119.220956	S31, T2N, R22W
20	Arnold Road	34.134447, -119.153555	S26, T1N, R22W
21	Casper Road	34.136232, -119.144588	S26, T1N, R22W
22	Hueneme Road	34.147045, -119.121771	S19, T1N, R21W
23	Olds Road	34.160004, -119.148808	S14, T1N, R22W
24	Nauman Road	34.158282, -119.122493	S19, T1N, R21W
25	Etting Road	34.161637, -119.122519	S18, T1N, R21W
26	Hailes Road	34.166686, -119.124883	S13, T1N, R22W
27	Wood Road	34.170405, -119.096376	S17, T1N, R21W
28	Foothill Road	34.286641, -119.209889	S32, T3N, R22W
29	Telegraph Road	34.279602, -119.203944	S5, T2N, R22W
30	Cummings Road	34.331689, -119.119684	S19, T3N, R21W
31	Olive Road	34.317203, -119.138612	S24, T3N, R22W
32	Briggs Road	34.323764, -119.102324	S20, T3N, R21W
33	Aliso Canyon Road	34.320415, -119.148020	S23, T3N, R22W
34	Wheeler Canyon Road	34.343711, -119.144288	S14, T3N, R22W
35	Rose Avenue	34.193122, -119.159857	S3, T1N, R22W
36	Central Avenue	34.245548, -119.135025	S13, T2N, R22W
37	Santa Clara Avenue	34.231047, -119.133853	S24, T2N, R22W
38	Beardsley Road	34.239915, -119.101564	S20, T2N, R21W
39	Wright Road	34.231693, -119.163123	S22, T2N, R22W
40	San Buenaventura State Parks	34.268667, -119.277028	S15 T2N R22W

Source: www.earthpoint.us

Note (1) Map identification numbers correspond to Figure B.

City of Ventura City Parks Department

The City of Ventura City Parks Department is requesting to increase the amount of reclaimed water they currently use by a maximum of .02 MGD for tree irrigation. The continued conservation requirements are forcing the City to either pay penalty fees for continued irrigation or suffer costs in losing the trees. The trees contribute to the beautification of the city, enhance the green areas and overall wellbeing of the community. A list of the proposed use locations is provided in Table 3, and shown on Figure C.

Contact information:

Raul Gallo, P. E.
 Division Manager – Transportation Department
 (805) 672-2132
Raul.Gallo@ventura.org

Nancy O'Connor - Parks Division Manager
 Ventura Parks, Recreation, and Community Partnerships
 City of Ventura
 (805) 652-4552
noconnor@cityofventura.net

Table 3 City of Ventura Parks Department Proposed Recycled Water Locations

ID	Name	Lat	Long	Township and Range
A	HILL ST	34°16'18.37"N	119°12'27.21"W	S T2N R22W
B	TELEPHONE	34°16'4.49"N	119°11'39.62"W	S T2N R22W
C	LOMA VISTA	34°16'40.76"N	119°14'58.27"W	S T2N R22W
D	SEAWARD	34°16'8.17"N	119°16'4.41"W	S T2N R22W
E	THOMPSON	34°16'33.60"N	119°16'42.49"W	S T2N R22W
F	CHESNUT	34°16'55.61"N	119°17'29.56"W	S T4N R23W
G	SANTA CLARA	34°16'46.19"N	119°18'10.64"W	S T4N R23W
H	VENTURA AVE	34°17'26.67"N	119°17'52.52"W	S T4N R23W
I	CAMINO REAL PARK	34°16'2.14"N	119°14'8.58"W	S T2N R22W
J	AV PARK	34°17'57.81"N	119°17'32.12"W	S T4N R23W
K	CHUMASH	34°16'33.86"N	119°10'32.11"W	S T2N R22W
L	SERRA PARK	34°15'57.70"N	119°10'21.65"W	S T2N R22W
M	WEBSTER	34°16'16.76"N	119°12'38.77"W	S T2N R22W
N	JOHNSON	34°15'26.64"N	119°11'53.63"W	S T2N R22W
O	SHERWIN	34°14'57.24"N	119°11'54.93"W	S T2N R22W
P	CRESCENT	34°15'0.32"N	119°11'55.01"W	S T2N R22W
Q	BV LINEAR	34°16'52.28"N	119° 9'22.25"W	S T2N R22W
R	DAKOTA	34°18'33.61"N	119°17'20.85"W	S T4N R23W
S	FRITZ	34°16'53.54"N	119° 9'27.36"W	S T2N R22W

<i>ID</i>	<i>Name</i>	<i>Lat</i>	<i>Long</i>	<i>Township and Range</i>
<i>T</i>	VICTORIA	34°13'9.75"N	119°13'15.92"W	S T1N R22W
<i>U</i>	375 THOMPSON	34°16'42.15"N	119°17'41.74"W	S T4N R23W

Source: www.earthpoint.us

Note (1) Map identification numbers correspond to Figure C

Figure A – Current Recycled Water Users

Current Recycled Water Users

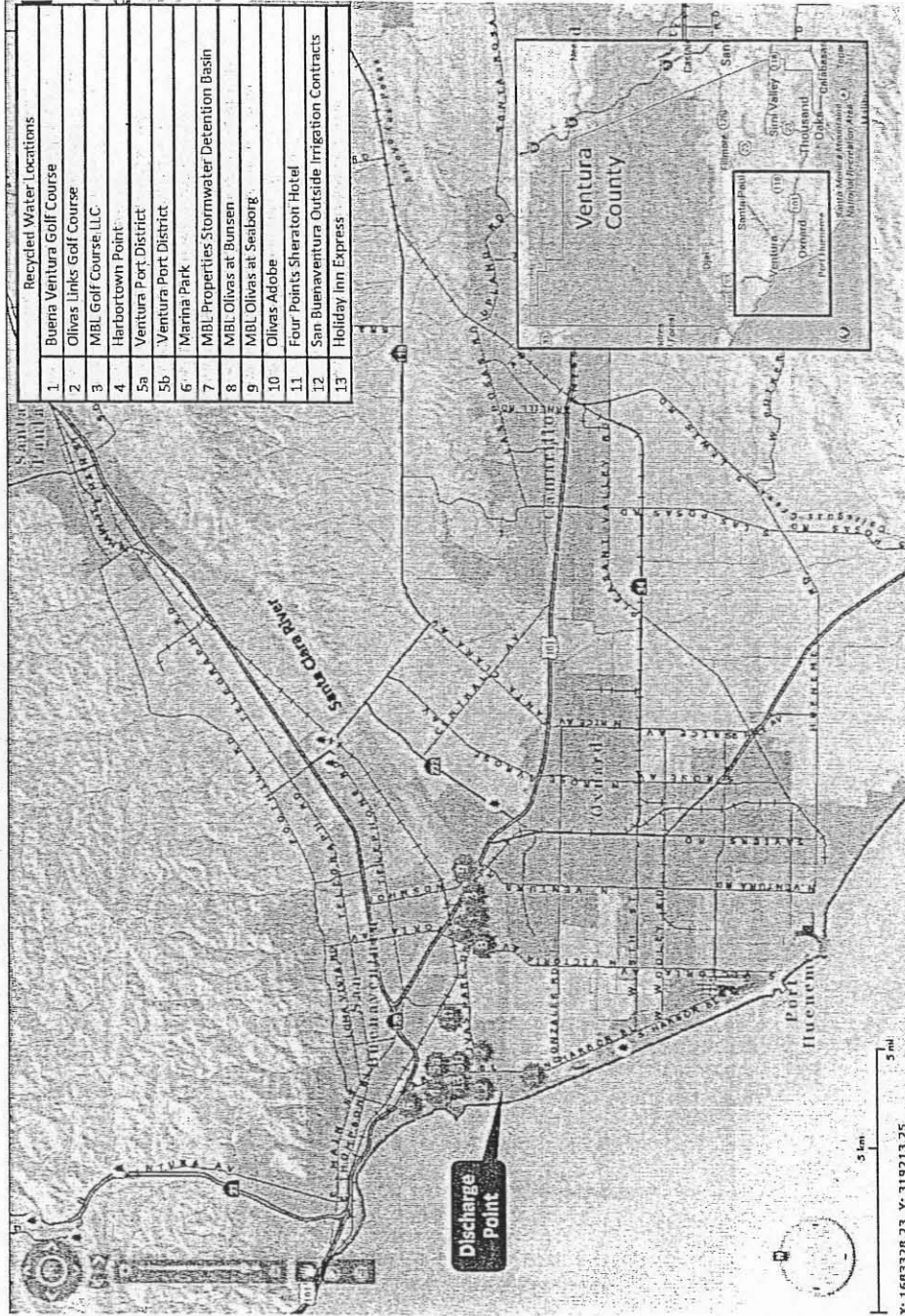


Figure B – Planned Recycled Water Users

Planned Recycled Water Users

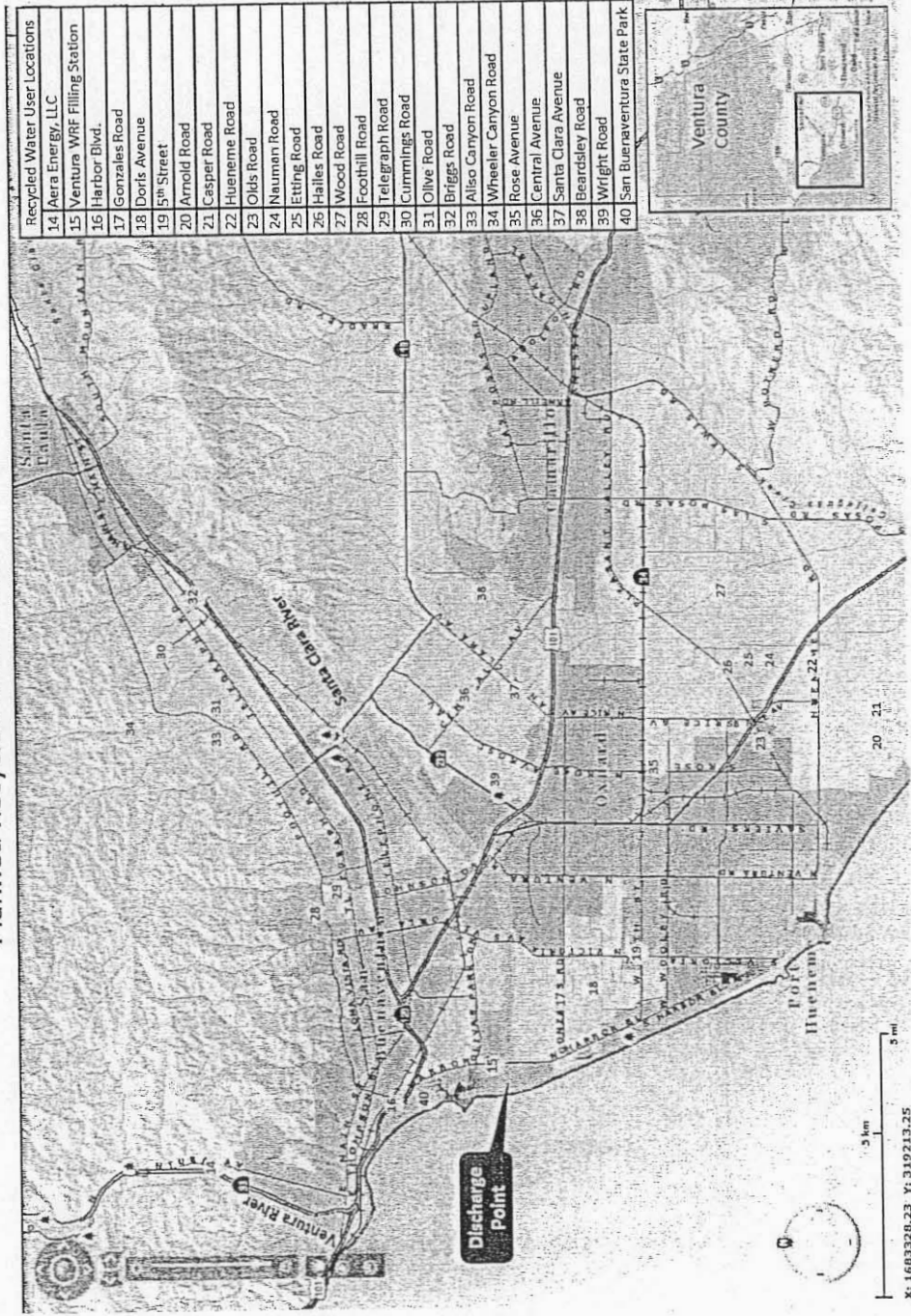


Figure C City of Ventura Parks Department Recycled Water Use Locations



Appendix B – Recycled Water Use Permit (Order 87-045)

State of California
CALIFORNIA REGIONAL WATER QUALITY CONTROL BOARD, LOS ANGELES REGION

ORDER NO. 87-45

WATER RECLAMATION REQUIREMENTS
FOR

CITY OF SAN BUENAVENTURA
(Ventura Water Renovation Facility) 6/90
(File No. 57-68)

The California Regional Water Quality Control Board, Los Angeles Region, finds:

1. City of San Buenaventura (hereinafter referred to as "Reclaimer") operates the Ventura Water Renovation Facility, located at 1400 Spinnaker Drive, Ventura, California, with a design flow capacity of 14 million gallons per day (mgd). The plant discharges all or part of its treated effluent to Olivas Park and Buenaventura Municipal golf courses to be used for recreational impoundment and turf irrigation, and to the Ventura Port District for landscape irrigation under requirements contained in Order 80-34, adopted by this Board on July 28, 1980. The Average flow for 1986 was 8.64 mgd to the Santa Clara Tidal Prism and 0.67 mgd for irrigation purpose.
2. Surface water discharge to the Santa Clara Tidal Prism is in accordance with a National Pollution Discharge Elimination System permit (NPDES Permit No. CA0053651) adopted by this Board.
3. The water reclamation treatment consists of primary sedimentation, activated sludge, biofiltration, secondary sedimentation, filtration, chlorination, dechlorination, and ponding for storage.
4. A review of the current requirements has been conducted by Board staff in accordance with California Administration Code, Title 23, Chapter 3, Subchapter 9, Article 2, Section 2232.2.
5. The areas of irrigation and impoundment reuse overlie ground water in the Oxnard Hydrologic Subarea. Ground waters in the Oxnard Hydrologic Subarea are beneficially used for municipal and domestic supply, agricultural supply, and industrial service and process supply. However, the ground waters of the shallow semiperched zone are of very poor

City of San Buenaventura

quality and are not beneficially used in any significant amounts.

6. The Board adopted a Revised Water Quality Control Plan for Santa Clara River Basin on March 27, 1978. The Plan contains water quality objectives for ground water in the Oxnard Hydrologic Subarea. The requirements contained in this Order, as they are met, will be in conformance with the goals of the Water Quality Control Plan.
7. Section 13523 of the California Water Code provides that a Regional Board, after consulting with and receiving the recommendations of the State Department of Health Services and after any necessary hearing, shall, if it determines such action to be necessary to protect the public health, safety, or welfare, prescribe water reclamation requirements for water which is used or proposed to be used as reclaimed water. Section 13523 further provides that such requirements shall include, or be in conformance with, the statewide reclamation criteria.
8. The use of reclaimed water for impoundments or for irrigation could affect the public health, safety, or welfare; requirements for such use are therefore necessary in accordance with Section 13523 of the Water Code.
9. This project involves an existing facility and as such is exempt from the provisions of the California Environmental Quality Act in accordance with California Administrative Code, Title 14, Chapter 3, Section 15301.

The Board has notified the Reclaimer and interested agencies and persons of its intent to prescribe water reclamation requirements for this facility and has provided them with an opportunity to submit their written views and recommendations.

The Board in a public meeting heard and considered all comments pertaining to the direct beneficial use and to the tentative water reclamation requirements.

IT IS HEREBY ORDERED, that City of San Buenaventura, shall comply with the following:

A. Reclaimed Water Limitations

1. Reclaimed water shall be limited to treated domestic wastewater only, as proposed.

City of San Buenaventura

2. Reclaimed water shall not contain constituents in excess of the following limits:

<u>Constituent</u>	<u>Unit</u>	<u>Maximum Limitations</u>
Total dissolved solid	mg/l	3,000
Chloride	mg/l	500
Sulfate	mg/l	1,000
Boron	mg/l	--

3. The pH of reclaimed water shall at all times be within the range 6.0 to 9.0.
4. Reclaimed water shall not contain trace constituents or other substances in concentrations exceeding the limits contained in the current edition of the California Department of Health Services Drinking Water Standards or in excess of action levels established by the State Department of Health Services.
5. Radioactivity shall not exceed the limits specified in Title 22, Chapter 15, Article 5, Sections 64441 and 64443, California Administrative Code, or subsequent revisions.
6. Reclaimed water shall not cause the nitrogen content in the receiving ground water to exceed the objectives in the Water Quality Control Plan.
7. Reclaimed water shall not contain concentrations of chemical constituents in amounts that adversely affect such beneficial use as agricultural supply.
8. Total identifiable chlorinated hydrocarbon pesticides shall not be present at concentrations detectable within the accuracy of analytical methods prescribed in "Standard Methods for the Examination of Water and Wastewater", latest edition, or other equivalent methods approved by the Executive Officer.

B. Specifications for Use of Reclaimed Water

1. Reclaimed water used for the irrigation of golf courses, cemeteries, freeway landscapes, and landscapes in other areas where the public has similar access or exposure shall be at all times an adequately disinfected, oxidized wastewater.

City of San Buenaventura

The wastewater shall be considered adequately disinfected if the median number of coliform organisms in the effluent does not exceed 23 per 100 milliliters, as determined from the bacteriological results of the last 7 days for which analyses have been completed, and the number of coliform organisms does not exceed 240 per 100 milliliters in any two consecutive samples.

Oxidized wastewater means wastewater in which the organic matter has been stabilized, is nonputrescible, and contains dissolved oxygen.

Disinfected wastewater means wastewater in which the pathogenic organisms have been destroyed by chemical, physical or biological means.

2. Reclaimed water used for the irrigation of parks, playgrounds, schoolyard, and other areas where the public has similar access or exposure shall be at all times an adequately disinfected, oxidized, coagulated, clarified, filtered wastewater or a wastewater treated by a sequence of unit processes that will assure an equivalent degree of treatment and reliability.

The wastewater shall be considered adequately disinfected if the median number of coliform organisms in the effluent does not exceed 2.2 per 100 milliliters, as determined from the bacteriological results of the last 7 days for which analyses have been completed, and the number of coliform organisms does not exceed 23 per 100 milliliters in any sample.

A coagulated wastewater means an oxidized wastewater in which colloidal and finely divided suspended matter have been destabilized and agglomerated by the addition of suitable floc-forming chemicals or by an equally effective method.

A filtered wastewater means an oxidized, coagulated, clarified wastewater which has been passed through natural undisturbed soils or filter media, such as sand or diatomaceous earth, so that the turbidity as determined by an approved laboratory method does not exceed an average operating turbidity of 2 turbidity units and does not exceed 5 turbidity units more than 5 percent of the time during any 24-hour period.

3. Reclaimed water used as a source of supply in a nonrestricted recreational impoundment shall be at all

City of San Buenaventura

times an adequately disinfected, oxidized, coagulated, clarified, filtered wastewater.

The wastewater shall be considered adequately disinfected if at some location in the treatment process the median number of coliform organisms does not exceed 2.2 per 100 milliliters and the number of coliform organisms does not exceed 23 per 100 milliliters in more than one sample within any 30-day period. The median value shall be determined from the bacteriological results of the last 7 days for which analyses have been completed.

4. Reclaimed water used as a source of supply in a restricted recreational impoundment shall be at all times an adequately disinfected, oxidized wastewater.

The wastewater shall be considered adequately disinfected if at some location in the treatment process the median number of coliform organisms does not exceed 2.2 per 100 milliliters, as determined from the bacteriological results of the last 7 days for which analyses have been completed.

5. Reclaimed water used as a source of supply in a landscape impoundment shall be at all times an adequately disinfected, oxidized wastewater.

The wastewater shall be considered adequately disinfected if at some location in the treatment process the median number of coliform organisms does not exceed 23 per 100 milliliters, as determined from the bacteriological results of the last 7 days for which analyses have been completed.

6. Reclaimed water shall not be directly used for uses other than those enumerated above until requirements for these uses have been established by this Board in accordance with Section 13523 of the California Water Code, unless the Board waives such requirements or finds that the above cited standards are applicable to these uses.

7. Reclaimed water uses shall meet the requirements specified in the "Guidelines for Use of Reclaimed Water" issued by the State Department of Health Services.

City of San Buenaventura

8. Reclaimed water used for irrigation shall be retained on the areas of use and shall not be allowed to escape as surface flow except as provided for in a National Pollutant Discharge Elimination System Permit.

For the purpose of this requirement, however, minor amounts of irrigation return water from peripheral areas shall not be considered a violation of this Order provided the discharge meets the requirements contained in a National Pollutant Discharge Elimination System Permit issued to the City of San Buenaventura (Ventura Water Renovation Facility).

9. Reclaimed water shall be applied at such a rate and volume as not to exceed vegetative demand and soil moisture conditions. Special precautions must be taken to prevent clogging of spray nozzles, to prevent overwatering and to exclude the production of runoff. Pipelines shall be maintained so as to prevent leaks.
10. Reclaimed water used for irrigation shall not be allowed to run off into recreational lakes unless it meets the criteria for such lakes.

C. General Requirements

1. The discharge or use of raw or inadequately treated sewage at any time is prohibited.
2. Reclaimed water shall not be used for irrigation during periods of rainfall and/or runoff.
3. Standby or emergency power facilities and/or sufficient capacity shall be provided for reclaimed water storage during rainfall or in the event of plant upsets or outages, and at times when spray irrigation cannot be practiced.
4. Reclaimed water use or disposal shall not result in earth movement in geologically unstable areas.
5. Adequate facilities shall be provided to protect the sewage treatment and reclamation facilities from damage by storm flows and runoff.
6. Adequate freeboard shall be maintained in reclaimed water storage pond to ensure that direct rainfall will not cause overtopping.

City of San Buenaventura

7. Neither treatment of waste nor any reclaimed water use or disposal shall cause pollution or nuisance.
8. Water reclamation and reuse or disposal shall not result in problems due to breeding of mosquitoes, gnats, midges, or other pests.
9. Reclaimed water use or disposal shall not impart tastes, odors, color, foaming, or other objectionable characteristics to receiving ground waters.
10. Reclaimed water use or disposal which could affect receiving ground waters shall not contain any substance in concentrations toxic to human, animal, or plant life.
11. Odors of sewage origin shall not cause a nuisance.

D. Provisions

1. A copy of these requirements shall be maintained at the reclamation facility so as to be available at all times to operating personnel.
2. In the event of any change in name, ownership, or control of these waste treatment and reclamation facilities, the Reclaimer shall notify this Board of such change and shall notify the succeeding owner or operator of the existence of this Order by letter, copy of which shall be forwarded to the Board.
3. In accordance with Section 13522.5 of the Water Code and Section 60323 of the Wastewater Reclamation Criteria, the Reclaimer shall file an engineering report, prepared by a properly qualified engineer registered in California, of any material change or proposed change in character, location or volume of the reclaimed water or its uses to the Board and State Department of Health Services.
4. The Reclaimer shall file with the Board technical reports on self monitoring work performed according to the detailed specifications contained in the Monitoring and Reporting Programs, as directed by the Executive Officer.
5. The Reclaimer shall notify this Board by telephone within 24 hours of any violations of reclaimed water use conditions or any adverse conditions as a result of

City of San Buenaventura

the use of reclaimed water from this facility; written confirmation shall follow within one week.

6. The Reclaimer shall notify Board staff by telephone immediately of any confirmed coliform counts that could cause a violation of the 7-day median limit, including the date(s) thereof. This information shall be confirmed in the next monitoring report; in addition, for any actual coliform limit violations that occurred, the report shall also include the reasons for the high coliform results, the steps being taken to correct the problem (including dates thereof), and the steps being taken to prevent a recurrence.
7. These requirements do not exempt the Reclaimer from compliance with any other laws, regulations, or ordinances which may be applicable; they do not legalize this reclamation facility, and they leave unaffected any further restraint on the use of reclaimed water at this site which may be contained on other statutes or required by other agencies.
8. The Reclaimer shall be responsible to insure that all users of reclaimed water comply with the specifications and requirements for such use.
9. This Order does not alleviate the responsibility of the Reclaimer to obtain other necessary local, state, and federal permits to construct facilities necessary for compliance with this Order; nor does this Order prevent imposition of additional standards, requirements, or conditions by any other regulatory agency. Expansion of this facility from its current capacity shall be contingent upon issuance of all necessary permits, including a conditional use permit.
10. In accordance with Section 13260 of the Water Code, the Reclaimer shall file a report of any material change or proposed change in character, location or volume of the discharge.
11. Supervisors and operators of this publicly owned wastewater treatment plant shall possess a certificate of appropriate grade as specified in California Administrative Code, Title 23, Chapter 3, Subchapter 14, Section 2455 and 2460.
12. The Reclaimer shall provide to each user of reclaimed water from Ventura Water Renovation Facility a copy of

these requirements, to be maintained at the user's facility as to be available at all times to operating personnel.

13. For any extension of the reclaimed water system, the Reclaimer shall submit a report detailing the extension for the approval of the Executive Officer. Following construction, as built drawings shall be submitted to the Executive Officer for approval prior to use of reclaimed water.
14. The Reclaimer shall submit to the Board within 60 days of the adoption of this Order, a fail-safe procedure for approval by the Executive Officer.
15. Order No. 80-34 adopted by this Board on July 28, 1980, is hereby rescinded.

I, Robert P. Ghirelli, Executive Officer, do hereby certify that the foregoing is a full, true, and correct copy of an Order adopted by the California Regional Water Quality Control Board, Los Angeles Region, on April 27, 1987.

Robert P. Ghirelli

ROBERT P. GHIRELLI, D.Env.
Executive Officer

GK/

State of California
CALIFORNIA REGIONAL WATER QUALITY CONTROL BOARD, LOS ANGELES REGION

MONITORING AND REPORTING PROGRAM NO. 6190
FOR

CITY OF SAN BUENAVENTURA
(Ventura Water Renovation Facility)
(File No. 57-68)

The Reclaimer shall implement this monitoring program on the effective date of this Order.

Monitoring reports shall be submitted by the dates in the following schedule:

<u>Reporting period</u>	<u>Report Due</u>
January - March	April 15
April - June	July 15
July - September	October 15
October - December	January 15

The first monitoring report under this program shall be submitted by July 15, 1987.

By January 30 of each year, the Reclaimer shall submit an annual report to the board. The report shall contain both tabular and graphical summaries of the monitoring data obtained during the previous year. In addition, the Reclaimer shall discuss the compliance record and the corrective actions taken or planned which may be needed to bring the discharge into full compliance with the Requirements.

Values obtained for the NPDES monitoring report during periods of discharge to surface waters may be reported here in lieu of duplicate testing, if representative. However, non-NPDES self-monitoring reports shall be submitted separately from the NPDES monitoring reports.

Reclaimed Water Monitoring

A sampling station shall be established where representative samples of reclaimed water can be obtained. Reclaimed water samples may be obtained at a single station provided that station is representative of the quality at all discharge points. Each sampling station shall be identified. The following shall constitute the reclaimed water monitoring program:

<u>Constituent</u>	<u>Units</u>	<u>Type of Sample</u>	<u>Minimum Frequency of Analysis</u>
Turbidity ¹	NTU	continuous	-----
Total flow ²	gallon	continuous	-----
Coliform group ³	MPN/100ml	grab	daily
pH	pH units	grab	daily
Total dissolved solids	mg/l	24-hr composite	monthly
Chloride	mg/l	24-hr composite	monthly
Boron	mg/l	24-hr composite	monthly
Sulfate	mg/l	24-hr composite	monthly
Arsenic	mg/l	24-hr composite	quarterly
Barium	mg/l	24-hr composite	quarterly
Cadmium	mg/l	24-hr composite	quarterly
Chromium	mg/l	24-hr composite	quarterly
Lead	mg/l	24-hr composite	quarterly
Mercury	mg/l	24-hr composite	quarterly
Selenium	mg/l	24-hr composite	quarterly
Silver	mg/l	24-hr composite	quarterly
Cyanide	mg/l	24-hr composite	quarterly
Nitrate	mg/l	24-hr composite	quarterly
Fluoride	mg/l	24-hr composite	quarterly
Radioactivity	pCi/l	24-hr composite	quarterly

¹Required only for applications having a turbidity limit. The average value recorded each day and amount of time that 5 NTU was exceeded each day shall be reported. Turbidity samples may be obtained anywhere in the treatment process subsequent to the filtration procedure.

²Shall report the daily volume of reclaimed water used at each site of use.

³Samples shall be obtained at some point in the treatment process at a time when wastewater flow and characteristics are most demanding on the treatment facility and disinfection procedures. The location(s) of the sampling point(s) and any changes thereto must be approved by the Executive Officer, and proposed changes shall not be made until such approval has been granted. If reclaimed water is used for irrigation of golf courses, cemeteries, freeway landscapes, parks, playgrounds, schoolyards, or other areas where the public has similar access or exposure, samples shall be obtained subsequent to the chlorination procedure. Coliform values obtained must meet the strictest requirement specified for all uses during periods of multiple use, unless separate coliform analyses are obtained at each particular point of use.

Total identifiable

chlorinated

hydrocarbon

mg/l

grab

quarterly

General Provisions for Sampling and Analysis

All sampling, sample preservation, and analyses shall be performed in accordance with the latest edition of "Guidelines Establishing Test Procedures for Analysis of Pollutants", promulgated by the United States Environmental Protection Agency.

All chemical, bacteriological, and bioassay analyses shall be conducted at a laboratory certified for such analyses by the State Water Resources Control Board or approved by the Executive Officer.

General Provisions for Reporting

For every item where the requirements are not met, the Reclaimer shall submit a statement of the actions undertaken or proposed which will bring the discharge into full compliance with requirements at the earliest time and submit a timetable for correction.

The Reclaimer shall maintain all sampling and analytical results, including strip charts; date, exact place, and time of sampling; dates analyses were performed; analyst's name; analytical techniques used; and results of all analyses. Such records shall be retained for a minimum of three years. This period of retention shall be extended during the course of any unresolved litigation regarding this discharge or when requested by the Board.

In reporting the monitoring data, the Reclaimer shall arrange the data in tabular form so that the date, the constituents, and the concentrations are readily discernible. The data shall be summarized to demonstrate compliance with Water Reclamation Requirements and, where applicable, shall include results of receiving water observations.

The Reclaimer shall file a report with this Board describing the purposes for which reclaimed water from this facility is used, estimating quantities used for each type of use, depicting on a map or drawing the area(s) of use, and stating the name and address of each user of reclaimed water if other than the Reclaimer. This report shall be updated at least annually, and shall be included with the annual report due January 30th each year.

Each quarterly report shall include a statement that all reclaimed water was used only as specified in the requirements during the quarter.

If no water was delivered for reuse during the quarter, the report

shall so state.

Monitoring reports shall be signed by:

- a. In the case of corporations, by a principal executive officer at least of the level of vice-president or his duly authorized representative, if such representative is responsible for the overall operation of the facility from which discharge originates;
- b. In the case of a partnership, by a general partner;
- c. In the case of a sole proprietorship, by the proprietor;
- d. In the case of municipal, state or other public facility, by either a principal executive officer, ranking elected official, or other duly authorized employee.

Each report shall contain the following completed declaration:

"I declare under penalty of perjury that the foregoing is true and correct.

Executed on the _____ day of _____ at _____.

(Signature)

(Title)"

Ordered by Robert P. Ghirelli
Executive Officer

April 27, 1987
Date

GK/

Appendix C - Water Reuse Permit for Mobile Users



WATER REUSE PERMIT FOR MOBILE USERS – Definitions and Frequent Questions

Effective Date of Permit and Expiration Date

Leave blank. To be filled out by VWRP personnel.

Name of Company

This is the name of the person(s), company or entity that owns or has contracted with the hauler(s) to transport recycled water. It is the name and address of the company that will be paying the bill.

Recycled Water Use Hauler (*Company and hauler may be the same entity*)

This is the name of any representative(s) designated by the Company to handle water pick-up and delivery to the use site.

Volume of Recycled Water

This is the largest amount in gallons that will be taken per day by the company/hauler.

Method of Receiving Recycled Water – “Fill Station”

Ventura Wastewater Reclamation Facility” (VWRP) has recently completed our “Mobile Fill Station for Recycle Water haulers. Your receiving vessel should provide: a) Six (6) inch or larger hatch at the top that can be secured, or b) Two inch “cam lock” fitting with shutoff valve. Please coordinate with Wastewater Plant Supervisor John Willis at 805-797-1514 for first-time water pick-up. Location: VWRP’s Wastewater Treatment Plant, 1400 Spinnaker Drive, Ventura. See FIGURE 1 MAP on page seven.

Recycled Water Pick-Up Location:

See Figure 1 – Map on page seven (7) of this Permit.

Application Method and Use of Water

Check all that apply.

Signature of Producer/Distributor

Leave Blank. To be filled out by VWRP employee.

Water Reuse Release Form

Haulers are to enter the amount of recycled water received during each pickup at VWRP’s Mobile Fill Station.

Recycled Water Use Areas Form

Provide “User Area” contact name, address, and city/county in which the recycled water will be used. Include the expected date you plan to start using the recycled water and estimated quantity per day.

If applying recycled water to landscaping at residential and commercial properties, provide end user’s contact name, address, phone number, email, delivery start date and estimated quantity to be applied per day.

End User

Is the receiver of recycled water from the Company/Hauler. They are subject to the requirements of recycled water use and must obtain Recycle Water Training and a **MOBILE USER Wallet ID Card** from VWRP prior to commencement of first delivery.

VENTURA WATER RECLAMATION FACILITY – VWRP
 RECYCLED WATER MOBILE REUSE PROGRAM



This Use Permit must be available for inspection at all times. The recycled water Hauler must carry a copy in the tanker truck at all times and present it to the VWRP for water pickups. Permit is subject to RWQCB Order 87-045 and Order R4-2013-0174 NPDES No. CA0053651

WATER REUSE PERMIT PRODUCER/DISTRIBUTOR
 VWRP - Wastewater Treatment Plant
 1400 Spinnaker Drive Ventura, CA 93001
 805-797-1514

EFFECTIVE DATE OF PERMIT: _____ EXPIRATION DATE: _____

COMPANY INFORMATION

NAME OF COMPANY _____ CONTACT: _____
 PHONE: _____ EMAIL: _____
 ADDRESS _____ CITY: _____ ZIP: _____

RECYCLED WATER HAULERS INFORMATION

1.	Name Of Hauler: _____ Cell: _____	Phone: _____ Address: _____	Email: _____ City _____	VEH License _____ Zip: _____
2.	Name Of Hauler: _____ Cell: _____	Phone: _____ Address: _____	Email: _____ City _____	VEH License: _____ Zip: _____
3.	Name Of Hauler: _____ Cell: _____	Phone: _____ Address: _____	Email: _____ City _____	VEH License _____ Zip: _____

A **Water Reuse Release Form** must be filled out for each water pickup at the VWRP, and retained at the site and on the hauler's vehicle. If demand for the VWRP Fill Station justifies, an additional Fill Station may be established. The hauler shall adhere to the attached Guidelines for "Best Management Practices" (BMP) and Worker/Public Protection.

RECYCLED WATER USE INFORMATION

ESTIMATED VOLUME OF RECYCLED WATER HAULED: _____ GALLONS PER DAY MAX GALLONS ALLOWED PER DAY: _____
 LOCATION OF FILL STATION: FILL STATION AT VWRP TREATMENT PLANT RECYCLED WATER HYDRANT (Not Available)
 TRUCK TYPE: TANK TRUCK WATER TRUCK WATER BUFFALO TRAILER OTHER: _____
 USE OF RECYCLED WATER: IRRIGATION COMPACTION DUST CONTROL
 APPLY TO RESIDENTIAL/COMMERICAL LANDSCAPING OTHER: _____
 SIGNAGE REQUIRED: On TRUCK PROJECT SITE COMMENTS: _____

CERTIFICATION

I HEREBY CERTIFY UNDER PENALTY OF PERJURY THAT THE INFORMATION PROVIDED IN THIS APPLICATION AND IN ANY ATTACHMENT IS TRUE AND ACCURATE TO THE BEST OF MY KNOWLEDGE. I ALSO CERTIFY THAT I HAVE READ AND AGREE TO ABIDE BY ALL APPLICABLE RULES AND REGULATIONS OF THE RWQCB NO. Order R4-2013-0174 / WRRs 87-45, CI number 6190. VWRP RULES AND REGULATIONS PROHIBIT MAKING UNAUTHORIZED CONNECTIONS. FAILURE TO BE IN CONFORMANCE TO THIS PERMIT AND APPLICABLE RECYCLE WATER REGULATIONS WILL RESULT IN PENALTIES AS PROVIDED IN:

§ The City of Ventura Municipal Code, Division 22, Article 6. Administrative Enforcement Remedies (revised 2010-03-02):
 VIOLATIONS MAYBE BE ASSESSED TO A MAXIMUM OF \$1000 PER INCIDENT PER DAY AND SUSPEND YOUR ABILITY TO RENEW THE PERMIT.

_____ Producer/Distributor:	_____ Signature	_____ Print Name	_____ Title	_____ Date
_____ Company Representative:	_____ Signature	_____ Print Name	_____ Title	_____ Date
_____ Recycle Water Hauler	_____ Signature	_____ Print Name	_____ Title	_____ Date



TERMS AND CONDITIONS FOR COMMERCIAL RECYCLED WATER USERS
(State of California Department of Health Services Guidelines for Tertiary Treated Recycled Water)

A. PROHIBITIONS OF MOBILE RECYCLE WATER USE:

1. The use of recycled water pursuant to this General Mobile Recycled Water Permit is prohibited unless the User has submitted a completed "Mobile Recycled Water Application", with application fee and has received confirmation of enrollment.
2. In conformance with Title 22 Requirements, recycled water shall not be used for direct human consumption or for the processing of food or drink intended for human consumption.
3. No cross connections shall be made between drinking water systems and recycled water systems/equipment.
4. Recycled water shall be used only for California Code of Regulations Title 22 approved uses for disinfected tertiary-treated recycled water, which includes landscape irrigation, dust control, and soil compaction.
5. Hauler's vehicles used for transportation and distribution of recycled water must have water tight valves and fittings, must not leak, and tanks must be cleaned of contaminants prior to use. A vessel which has previously contained material from a septic tank or cesspool shall not be used to convey recycled water.
6. Recycled water shall not enter a dwelling or food handling facility, and shall not contact any drinking water fountains.
7. It is prohibited to transport and deliver recycled water to an end user's onsite storage or a piped system. The recycled water must be applied directly to an approved surface by a trained hauler.
8. Recycled water shall not be used as a domestic or animal water supply.
9. Use or installation of hose bibs in any recycle water Mobile vehicle or equipment is prohibited.
10. The use of recycled water for landscape irrigation shall not cause or threaten to cause pollution or nuisance as defined in Water Code section 13050.
11. Irrigation or impoundment of recycled water within a minimum of 50 feet of any water well is prohibited.
12. Recycled water shall not be allowed to escape from designated use area(s) as surface flow. It shall not be discharged to the street gutter, storm drain system, pond or enter waters of the state (streams or lakes). If you have leftover recycled water and want to dispose of it, either discharge it to a preapproved landscaped area or sanitary sewer via an onsite cleanout.
13. Recycled water shall not be applied to irrigation areas during periods when soils are saturated.
14. Recycled water shall only be hauled to pre-approved locations listed on the "Users Logbook Form" in this permit.
15. Residential Haulers can only deliver to residential use areas.

B. USER'S RESPONSIBILITIES

1. The Recycled Water Use Supervisor ensures that all recycled water vehicles and equipment are maintained, operated and repaired at all times in a manner that does not cause illness or injury to any person and in a manner that does not cause damage or injury to the real or personal property of any person or entity.
2. Enforce and implement all prohibitions listed above.
3. If a cross connection is discovered, contact VWRWF @ 805-797-1514 immediately and remove the potable lines from service. If potable lines are exposed to RW, contact the Ventura County Health Dept. for acceptable re-certification for drinking water use.
4. Use of recycled water will be discontinued if the prohibitions and requirements of this permit are not met. Use of recycled water may resume once all of the conditions which caused the violations have been corrected.
5. Company and/or Hauler is responsible for all associated costs incurred by VWRWF to ensure conformance of these requirements and protection of public health.
7. User is responsible for purchasing and installing recycled water signs and magnets on transport vehicles and at entrance to the use site. Signs shall remain in place during transport and use of recycled water and until the tank is emptied of all recycled water. Signs are available for purchase at the VWRWF office.
8. Restrict delivery of recycled water only to pre-approved end users within VWRWF's service areas and VWRWF Partner's service areas.
9. Submit a list, on a monthly basis, of current end users receiving recycled water through your service. The list should include name, address, city, zip code, phone number, email address, and quantity applied to their site during the period.
10. Verify end users have obtained a VWRWF Recycled Water ID Card prior to applying recycled water onto their landscaping.



C. The VWRF Retains Rights of Recycle Water Use:

1. Have the right and responsibility to suspend or terminate recycled water service in the event that the above prohibitive conditions are not being adhered to.
2. Have the right to enter hauler's end user's property to perform periodic inspections to ensure compliance with recycled water user requirements.
3. Have the right to notify the potable drinking water supplier of recycled water deliveries within their service area. VWRF may share the hauler's list of end users with the Ventura County Health Department and local drinking water supplier. The drinking water supplier may inspect haulers' property to ensure recycle water management does not impair the potable water supply or public health.

D. Health and Safety Guidelines For Workers and the Public.

1. To the extent practical, public contact with recycled water shall be avoided.
2. Workers, residents, and the public are made aware of the potential health risks associated with contact or ingestion of recycled water, and are educated about proper hygienic practices to protect themselves and their families.
3. In all areas where recycled water is used that are accessible to the public, warning signs shall be installed at the entrances and other potential contact areas as identified by the VWRF.
4. Recycled water shall not be applied where it could contact drinking water facilities, storm drains, or food handling facilities.
5. Adequate measures shall be taken to prevent ponding, and to prevent runoff of recycled water from the authorized recycled water use area.
6. Workers are provided with the appropriate safety equipment and clothing during prolonged contact with recycled water.
7. Potable drinking water is provided for workers.
8. A first aid kit is available on site, to prevent the contact of cuts and other injuries with recycled water.
9. Hauler's vehicles that convey recycled water shall be clearly labeled in a prominent location with language stating in English "Recycled Water Do Not Drink". See Figure 2 Page 8.
10. After contact with recycled water, wash hands with soap and potable water prior to eating or smoking.
11. A. Workers, residents, and the public are made aware of the potential health risks associated with contact or ingestion of recycled water, and are educated about proper hygienic practices to protect themselves and their families.
12. Workers are provided with the appropriate safety equipment and clothing during prolonged use with recycled water.
13. Toilet and washing facilities are provided.
14. Precautions are taken to avoid recycled water contacting food. Foodstuff is not allowed into areas that are still wet with recycled water.

E. EFFICIENT IRRIGATION

1. Irrigation with recycled water only occurs during periods of minimal public use of the Use Area with consideration given to allow an adequate dry-out time before the Use Area will be used by the public.
2. Minimize RW spray pressure. Install pressure reducers to decrease overspray leaving the Use Area.
3. Education of residents, customers and employees regarding the importance of efficient water use.

I HAVE READ AND UNDERSTOOD THESE GUIDELINES.

Company Responsible Person:

Recycled Water Hauler:



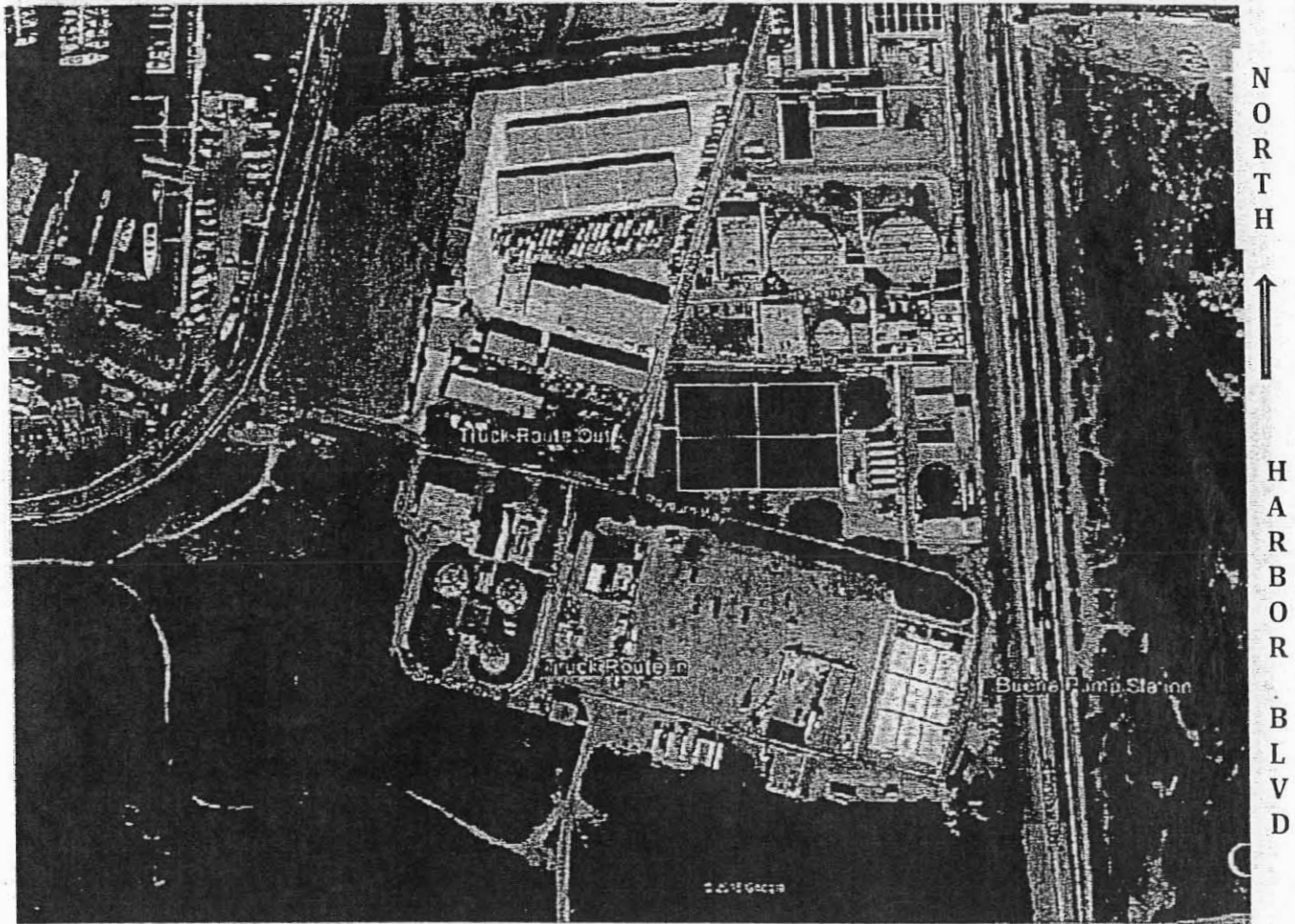
RECYCLE WATER USERS SITE LOGBOOK FORM:

Site 1 Contact Name:		
Address (No/Street/City/ZIP):		Location of Irrigation Area:
Phone	Email	Delivery Start Date / Quantity Applied per day
Approved Signature:		
Site 2 Contact Name:		
Address (No/Street/City/ZIP):		Location of Irrigation Area:
Phone	Email	Delivery Start Date / Quantity Applied per day
Approved Signature:		
Site 3 Contact Name:		
Address (No/Street/City/ZIP):		Location of Irrigation Area:
Phone	Email	Delivery Start Date / Quantity Applied per day
Approved Signature:		
Site 4 Contact Name:		
Address (No/Street/City/ZIP):		Location of Irrigation Area:
Phone	Email	Delivery Start Date / Quantity Applied per day
Approved Signature:		
Site 5 Contact Name:		
Address (No/Street/City/ZIP):		Location of Irrigation Area:
Phone	Email	Delivery Start Date / Quantity Applied per day
Approved Signature:		

FIGURE 1 MAP: - VWRP MOBILE USERS OF RECYCLED WATER

VEHICLE TANK FILLING STATION ROUTE

1400 SPINNAKER DRIVE, VENTURA 93001



VWRP Wastewater Treatment Plant, 805-797-1514

FIGURE 2 “RECYCLED WATER – DO NOT DRINK”

