



California Regional Water Quality Control Board

Los Angeles Region



Linda S. Adams
Cal/EPA Secretary

320 W. 4th Street, Suite 200, Los Angeles, California 90013
Phone (213) 576-6600 FAX (213) 576-6640 - Internet Address: <http://www.waterboards.ca.gov/losangeles>

Arnold Schwarzenegger
Governor

May 28, 2009

Ms. Mary Bergen
11584 Creek Road
Ojai, CA 93023

**GENERAL WASTE DISCHARGE REQUIREMENTS FOR SPECIFIED DISCHARGES TO
GROUNDWATER IN SANTA CLARA AND LOS ANGELES RIVER BASINS – LION CREEK
BRIDGE, OJAI, CALIFORNIA
(FILE NO. 08-043, ORDER NO. 93-010, SERIES NO. 031, CI-9401)**

Dear Ms. Bergen:

We have completed our review of your application for discharge of groundwater that is anticipated during construction of concrete supporting piles for the new bridge onto an old stranded secondary creek channel with a natural berm around the edges.

The goal of the project is to replace an existing bridge that is a barrier to steelhead with a railroad car bridge that is above the 100 year flood plain. Because the soils report showed groundwater at approximately four feet, Ms. Mary Bergen (hereinafter Discharger) expects to have to pump groundwater from the site during construction of the concrete supporting piles.

The project site is on Rancho Dos Rios in Ventura County, California, approximately 3.5 miles from the junction of Creek Road and Highway 33 (Figure 1). The bridge spans Lion Creek, approximately 850 feet upstream of the confluence with San Antonio Creek. Figure 2 is an overview showing the bridge site, the closest public road (Creek Road) and the temporary access road. The access road is necessary because the weight limit for the ranch bridge is 20 tons and the new bridge, the crane to install the bridge and concrete trucks exceed this limit.

The property boundary and the two streams (Lion and San Antonio Creeks) as well as the drainage patterns around the bridge site are shown in Figure 3. The proposed discharge site is shown in Figure 4.

Pumping groundwater will only be necessary during construction of the pilings for the bridge. This will include the drilling of the holes for the pilings (2 days) and the setting of rebar and pouring of concrete (4 days). The Discharger is proposing to discharge the groundwater onto the concrete behind the barns. The flow will proceed along the concrete to an upland area behind the barns (Figure 4).

The upland area is an old stranded secondary creek channel with a natural berm around the edges. The area of the proposed disposal site is approximately 15,900 ft² (0.366 acre). The area of the disposal site is expected to be sufficient to contain the ground water discharge. In the worst case scenario, groundwater would be discharged for 10 hours at a rate of 10 gallons per minute (gpm) on two consecutive days, producing 12,000 gallons of water. Twelve

California Environmental Protection Agency



Our mission is to preserve and enhance the quality of California's water resources for the benefit of present and future generations.

thousand gallons would cover 11% of the area to a depth of one foot. The total expected discharge of 36,000 gallons would cover 33% of the area to a depth of one foot.

If, for any reason, the flow approaches the limits of the disposal site, sand bag barriers will be built to contain the flow. If barriers are not sufficient to contain the flow, the discharge of groundwater will be stopped until it is possible to contain the flow. No groundwater will be allowed to flow outside of the boundaries of the disposal site.

Lion Creek is a sub-watershed (13 m²) of the Ventura watershed (226 m²). Lion Creek originates in the Upper Ojai Valley and drains through Lion Canyon to San Antonio Creek. The watershed in upper Ojai is a broad valley edged by steep mountains, with the Topa Mountains to the north and Sulphur Mountain to the south. The Upper Ojai is mostly rural, with hay fields, cattle grazing and some horse farms. Lion Canyon is narrow and rugged with steep hillsides rising to Sulphur Mountain on the south and Black Mountain on the north.

The project site is located within the West of Sulphur Mountain Road sub-basin of the Upper Ojai Valley Basin. Analyses of a grab water sample from the stream at bridge site in April 2008 indicate Total Dissolved Solids (TDS) at 1,430 mg/L, sulfate at 650 mg/L, and chloride at 93 mg/L. The levels for TDS and sulfate exceed the *Water Quality Control Plan for Coastal Watersheds of Los Angeles and Ventura Counties* (Basin Plan) water quality objectives (1,000 mg/L and 30 mg/L, respectively), but appear to be native to the local alluvial aquifer system. According to the Basin Plan, the Lion Canyon sub-watershed within the Santa Clara River Watershed is considered to support beneficial uses, including groundwater recharge, water contact recreation, non-contact water recreation, warm freshwater habitat, cold freshwater habitat, wildlife habitat, migration of aquatic organisms, spawning, reproduction, and/or early development, and wetland habitat.

Waste Discharge Requirements (E.6.) of Board Order No 93-010 states: "Wastewater discharged to groundwater shall maintain the existing water quality, even if that existing water quality exceeds established objectives. A determination shall be made by the Executive Officer as to the applicability of water quality standards with regard to the "Statement of Policy with Respect to Maintaining High Quality of Water in California", with each discharge, on a site-specific basis". The proposal is for groundwater to be discharged in the area from which it was extracted from the same aquifer. It will not be a threat to water quality nor will it threaten beneficial uses of the local groundwater. Subsequently, the Executive Officer has determined that the objectives for TDS and sulfate per Attachments "A" and "B" of Order No. 93-010 are not applicable to this proposed discharge.

Regional Board staff have reviewed the information provided and determined that the proposed discharge qualifies for enrollment under Order No. 93-010, "General Waste Discharge Requirements for Specified Discharges to Groundwater in Santa Clara River and Los Angeles River Basins" adopted by this Board on January 25, 1993.

Enclosed are your Waste Discharge Requirements consisting of Regional Board Order No. 93-010, Monitoring and Reporting Program No. CI-9401 and Standard Provisions Applicable to Waste Discharge Requirements. The Monitoring and Reporting Program requires you to implement the monitoring program on the date you receive this Order. All monitoring reports

California Environmental Protection Agency



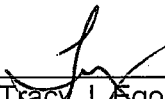
should be sent to the Regional Board, ATTN: Information Technology Unit. When submitting monitoring and technical reports to the Regional Board per these requirements, please include a reference to "Compliance File No. CI-9401", which will assure that the reports are directed to the appropriate file and staff. Also, please do not combine other reports with your monitoring reports. Submit each type of report as a separate document.

In order to avoid future annual fees, please notify this Regional Board when the project has been completed and the permit is no longer needed.

We are sending a copy of Board Order No. 93-010 only to the applicant. A copy of the Order is available at our website: <http://www.waterboards.ca.gov/losangeles>.

If you have any additional questions, please contact Project Manager, Mr. David Koo at (213) 620-6155 or Unit Chief, Dr. Rebecca Chou at (213) 620-6156.

Sincerely,



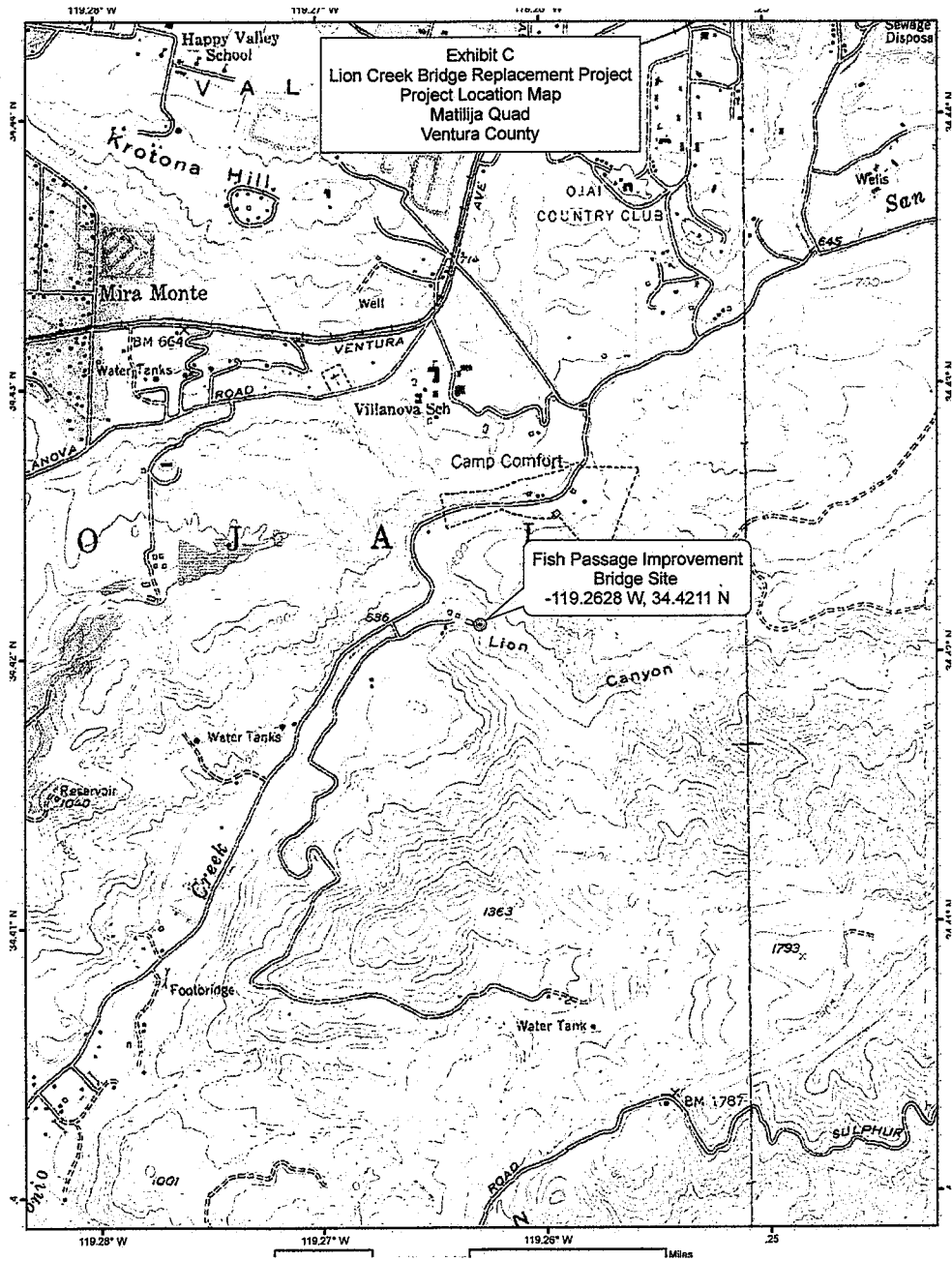
Tracy J. Egoscue
Executive Officer

Enclosures

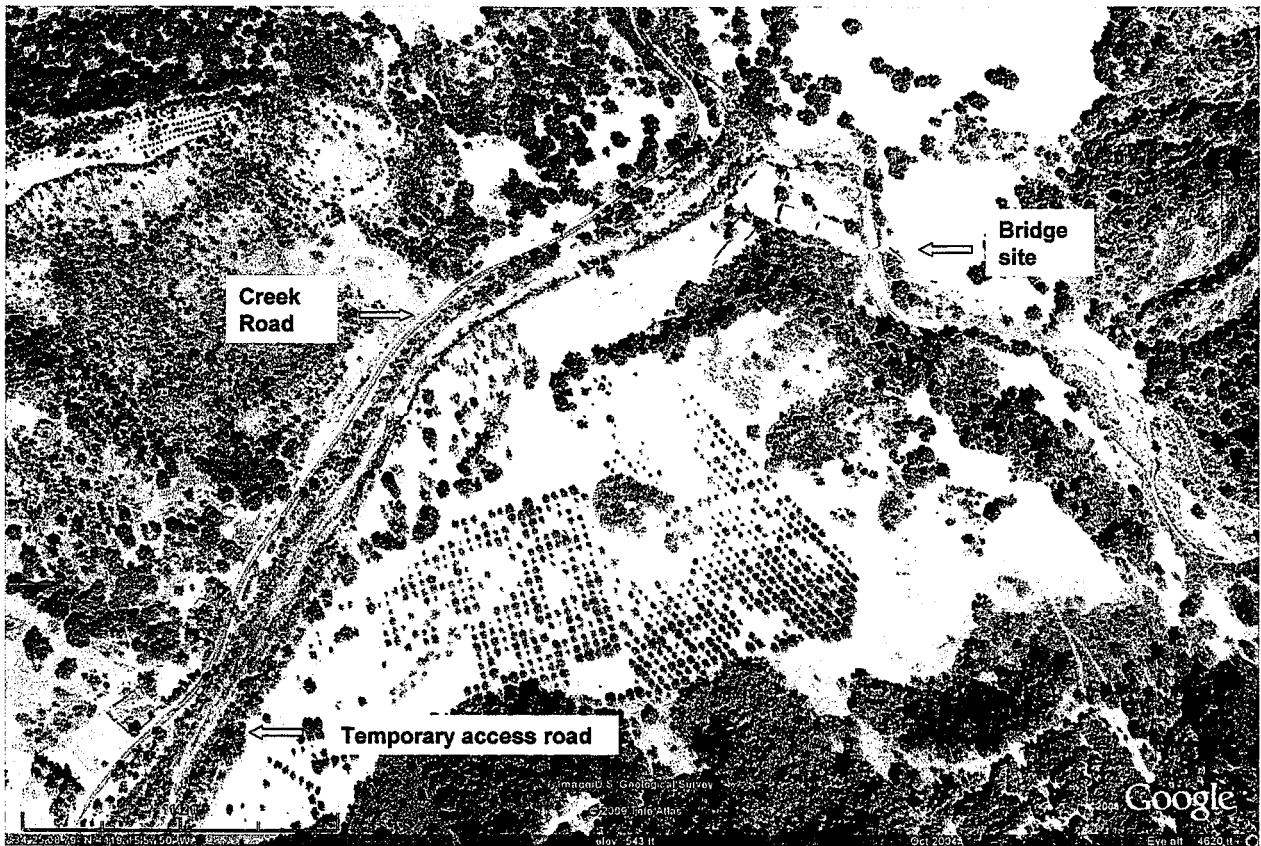
- 1) General Waste Discharge Requirements Order No. 93-010
- 2) Standard Provisions
- 3) Monitoring and Reporting Program CI-9401

cc: Mr. William Stratton, Ventura County, Environmental Health Division

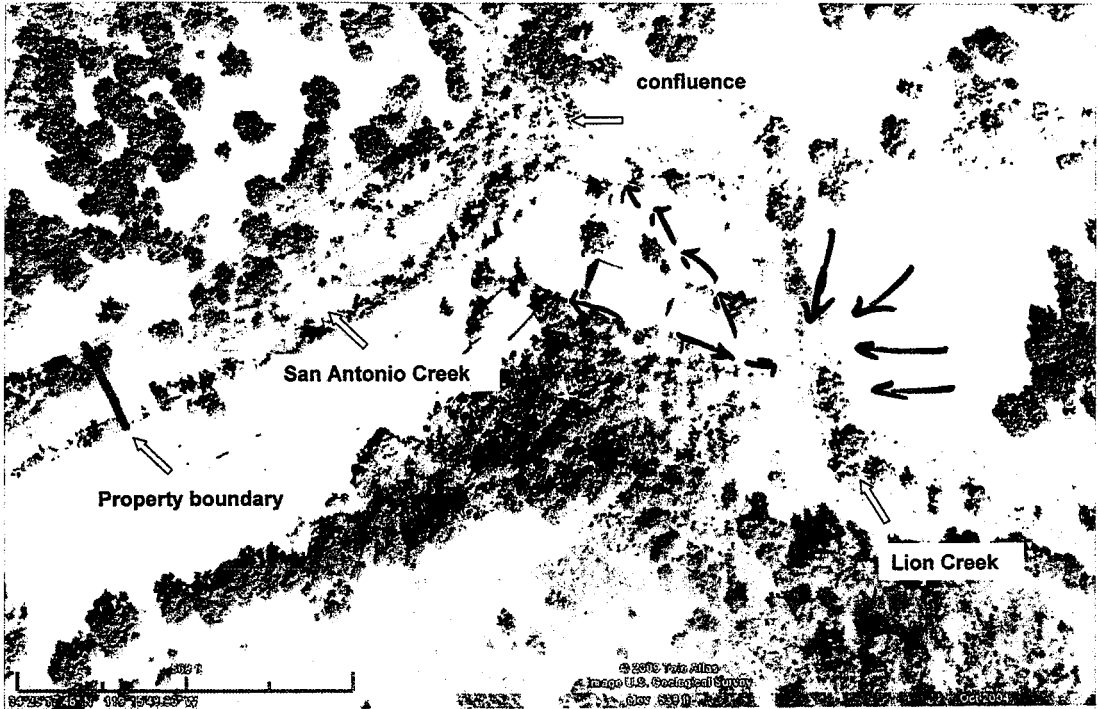
1. USGS Map showing location of Lion Creek bridge replacement project



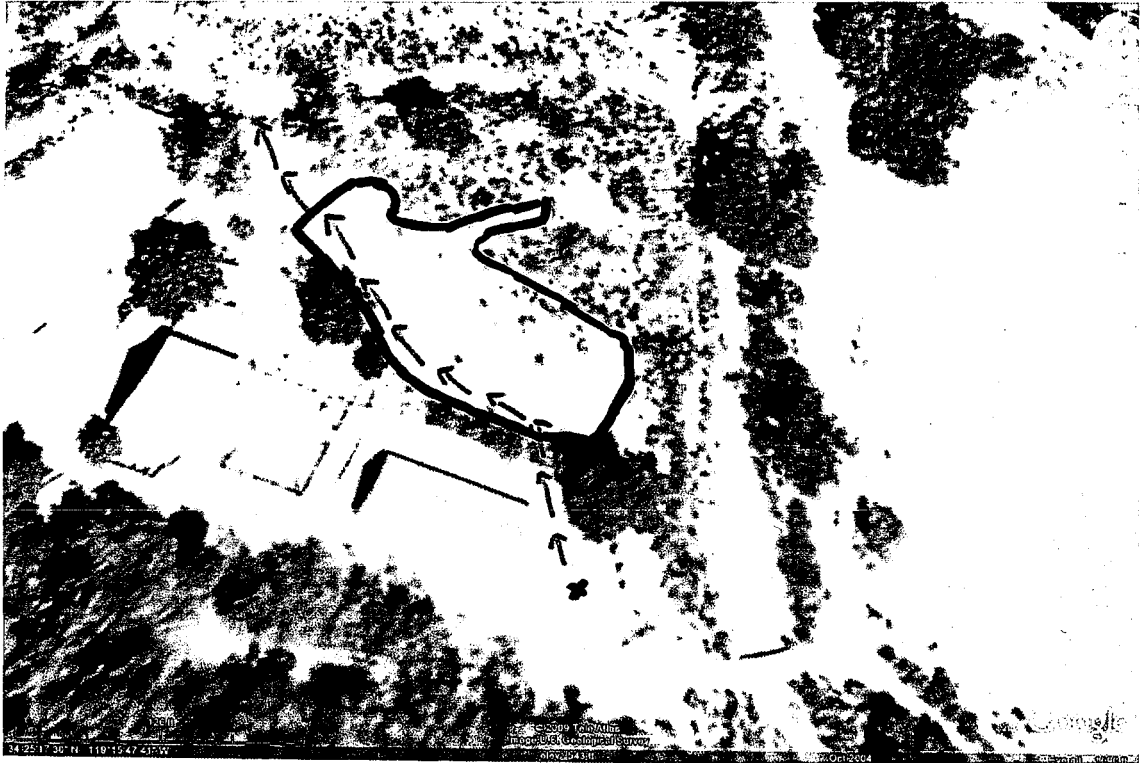
2. Overview showing location of bridge site and temporary access road.



3. Drainage at bridge site. Blue arrows show flow of Lion and San Antonio Creeks. Black arrows show surface flow.



4. Location of groundwater discharge. The red line shows the flow path. The black line shows the boundary of the disposal area.



**State of California
CALIFORNIA REGIONAL WATER QUALITY CONTROL BOARD
LOS ANGELES REGION**

ORDER NO. 93-010

**GENERAL WASTE DISCHARGE REQUIREMENTS
FOR SPECIFIED DISCHARGES TO GROUNDWATER
IN
SANTA CLARA RIVER AND LOS ANGELES RIVER BASINS
File No. 92-60**

The California Regional Water Quality Control Board, Los Angeles Region (hereinafter Regional Board), finds:

1. The California Water Code, Section 13260 of Chapter 4, Article 4, requires that any person discharging wastes, or proposing to discharge wastes, which could affect the quality of the waters of the State, shall file a Report of Waste Discharge with the Regional Board. The Regional Board will then prescribe requirements as to the nature of the proposed or existing discharge.
2. A number of activities carried on within the Region result in the discharge of water that, because of its characteristics, results in little or no pollution when discharged to groundwater. Examples of these activities include:
 - a) hydrostatic testing of tanks, pipes, and storage vessels;
 - b) construction dewatering;
 - c) dust control application;
 - d) water irrigation storage systems;
 - e) subterranean seepage dewatering;
 - f) well development and test pumping;
 - g) aquifer testing; and
 - h) monitoring well construction.

The following discharges are specifically excluded from this list: water produced from seawater extraction or wastewater treatment, reclaimed water, and water to be injected directly into an aquifer.

3. The water discharged from these activities results in discharges of relatively "clean" wastewater, containing few pollutants. For the purposes of this Order, "wastewater" is defined as high quality wastewater, produced as a result of the above-listed specified activities, and other similar activities. It is of a quality acceptable for use under State Department of Health Services standards and the Regional Board's Water Quality Control Plan.
4. These discharges occur in a manner where they will likely, through recharge or percolation, enter the groundwater and may therefore, be considered a waste discharge which could affect the quality of the waters of the State, and for which a Report of Waste Discharge must be filed under Water Code Section 13260.

January 6, 1993

5. Each month, this Regional Board receives a large number of requests to discharge water from the activities listed in Finding 2 above, and for other similar activities. For each such request, staff must determine the absence or presence of significant pollutants in the discharge, the regulatory limits for the pollutants, and the potential impact of the discharge on the waters of the State, and then prepare individual Waste Discharge Requirements.
6. It is anticipated that the large number of such requests will continue to be filed, and far exceed the capacity of staff to review applications and prepare individual Waste Discharge Requirements to bring to the Board for consideration, in a timely manner. These circumstances create the need for an expedited system for processing the numerous requests for discharge to groundwater.
7. The adoption of General Waste Discharge Requirements will:
 - a) simplify the application process for the Discharger,
 - b) expedite the issuance of Waste Discharge Requirements and decrease the regulatory burden on the regulated community,
 - c) free up Board staff for higher priority work, and
 - d) reduce the Board's time involved by enabling the Executive Officer to notify the Discharger, in appropriate cases, of the applicability of these general requirements adopted by the Regional Board.

These General Waste Discharge Requirements would benefit the public, the Board, and Board staff by accelerating the review process without loss of regulatory jurisdiction or oversight.

8. The beneficial uses of groundwater in the Los Angeles River and Santa Clara River Basins may include municipal and domestic supply, agricultural supply, industrial service and process supply, and freshwater replenishment.
9. The Board adopted revised Water Quality Control Plans for the Santa Clara River Basin and Los Angeles River Basin on October 22, 1990, and June 3, 1991, respectively. These Water Quality Control Plans contain water quality objectives for groundwater within the Basins. The requirements contained in this Order, as they are met, will be in conformance with the goals of these Water Quality Control Plans.
10. The State Water Resources Control Board adopted Resolution 68-16, "Statement of Policy With Respect to Maintaining High Quality of Waters in California", on October 28, 1968. This Policy states that wherever the existing quality of water is better than the quality established as objectives or adopted policies, such existing quality shall be maintained.

**General Waste Discharge Requirements
Discharge to Groundwater
Order No. 93-010**

File No. 92-60

11. The issuance of General Waste Discharge Requirements for the discharges subject to these general requirements is exempt from the provisions of Chapter 3 (commencing with Section 21100) of Division 13 of the Public Resources Code pursuant to one or more of the following:
- a) The lead agency has prepared an Environmental Impact Report or a negative declaration based on findings pursuant to California Code of Regulations (CCR), Title 14, Chapter 3, Section 15070, which show that there will be no significant impact on water quality.
 - b) The replacement or reconstruction of existing structures will have substantially the same purpose and capacity as the structure replaced as defined in CCR, Title 14, Section 15302.
 - c) The construction of new structures or the conversion of existing small structures will have only minor modifications in the exterior of the structure as defined in CCR, Title 14, Section 15303.
 - d) The activity will cause only minor alterations to land as defined in CCR, Title 14, Section 15304.
 - e) Minor alterations in land use will not result in any changes in land use or density as defined in CCR, Title 14, Section 15305.
12. These General Waste Discharge Requirements are not intended to alter or supersede existing restrictions or conditions imposed by other government agencies.

The Board has notified interested agencies and concerned persons of its intent to adopt General Waste Discharge Requirements for specified discharges to groundwater, and has provided them with an opportunity to submit their written views and recommendations.

The Board, in a public meeting, heard and considered all comments pertaining to the tentative requirements.

IT IS HEREBY ORDERED that the Dischargers authorized under this order shall comply with the following:

A. ELIGIBILITY

1. The General Waste Discharge Requirements, contained in this Order, will regulate discharges to groundwater from: hydrostatic testing of tanks, pipes and storage vessels; construction dewatering; dust control application; water irrigation storage systems; subterranean seepage dewatering; well development and test pumping; aquifer testing; monitoring well construction; and other similar discharges, in accordance with the California Code of Regulations.

To qualify for coverage under this Order, the Discharger may be required to:

- a) submit specific hydrogeological site studies summarizing the following: regional and local hydrogeology, a site plan designating structures and operations, descriptions and details of representative water supply and monitoring wells, and water conveyance systems, soil engineering analyses of representative earth materials including site lithology, permeability, infiltration data, and any potential adverse impacts on groundwater.
 - b) demonstrate that the discharge meets the criteria set forth herein, and that specified discharges to groundwater will not adversely impact the overall quality of the regional and local groundwater basin(s), and is in accordance with the appropriate Basin Plan Water Quality Objectives, State Department of Health Services (DHS) Primary and Secondary Drinking Water Standards, and all water quality standards associated with Priority Pollutants.
 - c) demonstrate that disinfectants, if used, will not adversely impact water quality in the groundwater basin(s).
2. The discharge must not adversely impact the overall quality of the regional and local groundwater basins, must not adversely affect beneficial uses, and must have water quality characteristics in accordance with Basin Plan Water Quality Objectives, State Department of Health Services' (DHS) Primary and Secondary Drinking Water Standards, and all water quality standards associated with Priority Pollutants.

B. APPLICABILITY

1. This Order will serve as General Waste Discharge Requirements for specified discharges to groundwater.
2. Upon receipt of the Report of Waste Discharge describing such discharge, the Executive Officer shall determine, as applicable, if such discharge,

- a) involves wastewater at limits lower than, or equal to, the acceptable levels of the Basin Plan Water Quality Objectives, the State DHS Primary and Secondary Drinking Water Standards, and all water quality standards associated with Priority Pollutants,
 - b) will be completed within a time frame stated by the Discharger and approved by the Executive Officer,
 - c) has been adequately characterized by hydrogeologic assessment,
 - d) is not a threat to water quality,
 - e) does not cause the degradation of groundwater, and
 - f) does not threaten or impair any designated beneficial uses of such waters.
3. In the event the Executive Officer so finds, he shall notify the Discharger, in writing, that the proposed wastewater discharge to groundwater is subject to this Order. Appropriate cases may also be brought to the Board for adoption of individual requirements when the Executive Officer deems it desirable or necessary.
 4. Should individual Waste Discharge Requirements with more specific requirements be issued to a Discharger, the applicability of these general requirements to the individual will be automatically terminated on the effective date of the individual Waste Discharge Requirements.

C. REPORT OF WASTE DISCHARGE

1. Deadline for Submission

All Dischargers shall file a Report of Waste Discharge at least 120 days before start of the discharge. The Executive Officer will determine the applicability of General Waste Discharge Requirements.

2. Failure to Submit a Report of Waste Discharge

Dischargers who fail to file a Report of Waste Discharge under Section 13260 of the California Water Code are guilty of a misdemeanor and may be liable civilly in accordance with Section 13261(b) of the California Water Code.

D. PROHIBITION

1. Discharge of wastewater is prohibited, except as specified in the Report of Waste Discharge.

E. WASTE DISCHARGE REQUIREMENTS

IT IS HEREBY ORDERED that the Discharger shall comply with the following:

1. Only those types of discharges specifically listed in the Report of Waste Discharge are authorized to be discharged by the General Waste Discharge Requirements.
2. Wastewater shall be analyzed, prior to discharge, to determine if it contains constituents in excess of the appropriate Basin Plan Water Quality Objectives, as listed in Tables 1 and 2 of Attachment "A".

Hydrologic and groundwater basin boundaries are included in Figures 1 and 2 of Attachment "A".

3. Wastewater shall be analyzed, prior to discharge, to determine that it does not contain constituents in excess of the Maximum Contaminant Levels (MCL) as listed in the State DHS Primary and Secondary Drinking Water Standards in Attachment "B".
4. Wastewater shall be analyzed, prior to discharge, to determine the concentrations of the chemical constituents listed in the Priority Pollutants exhibited in Attachment "B".
5. Wastewater which contains any constituent in excess of the MCL's, the Drinking Water Standards, or the Priority Pollutant standards, listed herein, shall not be discharged to groundwater.
6. Wastewater discharged to groundwater shall maintain the existing water quality, even if that existing water quality exceeds established objectives. A determination shall be made by the Executive Officer as to the applicability of water quality standards with regard to the "Statement of Policy With Respect to Maintaining High Quality of Waters in California", with each discharge, on a site-specific basis.
7. Neither the treatment nor discharge of wastewater shall cause a condition of pollution or nuisance.

8. The pH of wastewater discharged to groundwater, under this Order, shall at all times be within the range of 6.0 and 9.0 pH units.
9. Wastewater to be discharged to groundwater, under this Order, shall be retained on the areas of use, and shall not be allowed to escape as surface flow, except as provided in a National Pollutant Discharge Elimination System (NPDES) permit uniquely applicable to the specified discharge. For the purpose of this requirement, however, minor amounts of irrigation return water from peripheral areas shall not be considered a violation of this Order.
10. Wastewater discharged to groundwater shall be discharged at the site in accordance with these requirements, and only on property owned or controlled by the Discharger.
11. Wastewater which does not meet each of the foregoing requirements shall be held in impervious containers, and if transferred elsewhere, the final discharge shall be at a legal point of disposal, and in accordance with the provisions of Division 7.5 of the California Water Code. For the purpose of these requirements, a legal point of disposal is defined as one for which Waste Discharge Requirements have been established by a California Regional Water Quality Control Board, and which is in full compliance therewith.
12. Wastewater discharged to groundwater shall not contain any substance in concentrations toxic to human, animal, plant, or aquatic life.
13. Wastewater discharged to groundwater shall not impart tastes, odors, color, foaming, or other objectionable characteristics to the receiving groundwater.
14. Neither disposal nor handling of wastes shall cause a condition of pollution or nuisance or problems due to breeding of mosquitos, gnats, midges, flies or other pests.
15. The temperature of discharged wastewater shall not exceed 100°F.

F. PROVISIONS

1. A copy of this Order shall be maintained at the discharge facility and shall be available at all times to operating personnel.

2. In the event the Discharger is unable to comply with any of the conditions of this Order due to:
 - (a) Breakdown of equipment,
 - (b) Accidents caused by human error or negligence,
 - (c) Other causes such as acts of nature,
 - (d) Facility operations,the Discharger must notify this Board, by telephone, within 24 hours of the incident, and confirm it in writing within one week of the telephone notification.
3. In accordance with Section 13260(c) of the California Water Code, the Discharger shall file a report with this Regional Board of any material change or proposed change in the character, location and/or volume of the discharge.
4. In accordance with Section 13267(b) of the California Water Code, the Discharger shall furnish, under penalty of perjury, technical monitoring program reports; such reports shall be submitted in accordance with specifications prepared by the Executive Officer.
5. The Regional Board and other authorized representatives shall be allowed:
 - (a) Entry upon premises where a regulated facility or activity is located or conducted, or where records are kept under the conditions of this Order;
 - (b) Access to copy any records that are kept under the conditions of this Order;
 - (c) To inspect any facility, equipment (including monitoring and control equipment), practices, or operations regulated or required under this Order; and
 - (d) To photograph, sample, and monitor for the purpose of assuring compliance with this Order, or as otherwise authorized by the California Water Code.
6. In accordance with Section 13263(e) of the California Water Code, these Waste Discharge Requirements are subject to periodic review and revision by this Regional Board.
7. These requirements, prescribed herein, do not authorize the commission of any act, by the Discharger, which causes injury to the property of another, do not protect the Discharger from his/her liabilities under Federal, State, or local laws, and do not guarantee the Discharger a capacity right in the receiving groundwater.

8. If hazardous or toxic materials or hydrocarbons are stored at the facility and the facility is not monitored at all times, a 24-hour emergency response telephone number shall be prominently posted where it can be easily discerned.

G. MONITORING REQUIREMENTS

1. The Executive Officer may prescribe a Monitoring and Reporting Program for each authorized Discharger; applicable parameters limited in the discharge shall be monitored as specified by the Executive Officer in the Monitoring and Reporting Program.
2. The Discharger shall retain records of all monitoring information and data used to complete the Report of Waste Discharge for at least three years from the date of sampling, measurement, report, or application. The retention period shall be extended during the course of any unresolved litigation regarding the discharge, or when requested by the Regional Board.
3. The Discharger shall maintain all sampling, measurement and analytical results, including: the date, exact place, and time of sampling or measurement; the individual(s) who performed the sampling or measurement; the date(s) analyses were performed; analysts' names; and analytical techniques or methods used.
4. Representative samples of the discharge shall be taken prior to discharging to the groundwater.
5. All chemical and bacteriological analyses shall be conducted at a laboratory certified for such analyses by the State of California Department of Health Services. The laboratory performing the analyses must follow all applicable QA/QC protocols.
6. The Discharger shall calibrate and perform maintenance procedures on all monitoring instruments and equipment to insure accuracy of measurements, or shall insure that both activities will be conducted.

H. REPORTING REQUIREMENTS

1. The Discharger shall file with the Regional Board (Attention: Technical Support Unit) technical reports on self-monitoring work performed according to the Monitoring and Reporting Program specified by the Executive Officer, and submit other reports as requested by the Regional Board.

2. In reporting the monitoring data, the Discharger shall arrange the data in tabular forms such that the date, constituents, and concentrations are readily discernable. The data shall be summarized to demonstrate compliance with Waste Discharge Requirements.
3. All records and reports submitted to the Regional Board are public documents and will be made available for inspection by the public during normal business hours at the Regional Board office located at 101 Centre Plaza Drive in Monterey Park.
4. For every item where the requirements are not met, the Discharger shall submit a statement of the actions undertaken, or proposed, which will bring the discharge into full compliance with requirements at the earliest time, and submit a timetable for correction.
5. Each monitoring report must affirm in writing that:
"All analyses were conducted at a laboratory certified for such analyses by the State of California Department of Health Services, and in accordance with current EPA guideline procedures or as specified in this Monitoring Program."
6. Each report shall contain the following completed declaration:
"I declare under penalty of law that I have personally examined, and am familiar with, the information submitted in this document and all attachments, and that, based on my inquiry of those individuals immediately responsible for obtaining the information, I believe that the information is true, accurate, and complete. I am aware that there are significant penalties for submitting false information, including the possibility of fine and imprisonment. [CWC Sections 13263, 13267, and 13268]"
7. In the event that wastes, associated with the discharge under this Order, are transported to a different disposal site, the following shall be reported in the monitoring report: type and quantity of wastes; name and address of hauler (or method of transport if other than by hauling); and, location of the final point(s) of disposal.
8. In the event of any changes of subject land ownership or subject waste discharge facility currently owned or controlled by the Discharger, the Discharger shall notify the succeeding owner or operator of the existence of this Order in writing. A copy of the document shall be signed by the new owner accepting responsibility for this Order and shall be forwarded to this Regional Board.

General Waste Discharge Requirements
Discharge to Groundwater
Order No. 93-010

File No. 92-60

9. The Discharger shall notify this Regional Board, within 24 hours, by telephone, of any adverse condition resulting from this discharge, and such notification shall be affirmed in writing within seven calendar days.

I. EXPIRATION DATE AND CONTINUATION OF EXPIRED GENERAL WASTE DISCHARGE REQUIREMENTS

It is the Board's intent to review this Order within five (5) years of its adoption.

I, Robert P. Ghirelli, Executive Officer, do hereby certify that the foregoing is a full, true and correct copy of an Order adopted by the California Regional Water Quality Control Board, Los Angeles Region, on January 25, 1993.



ROBERT P. GHIRELLI, D.Env.
Executive Officer

Attachment "A"

**Groundwater Water Quality Objectives
Santa Clara River (4A)
Los Angeles River (4B)**

**Hydrologic Boundaries, CRWQCB-LA
Fig 1, Principal Surface Waters
Fig 2, Principal Ground Waters**

Water Quality Objectives for Ground Waters				
Santa Clara River Basin (4A)				
Area	Objective in mg/L			
	TDS	Sulfate	Chloride	Boron
Rincon Creek Hydrologic Unit ^a	None Specified (n/s)			
Ventura River Hydrologic Unit	None Specified (n/s)			
Ojai Hydrologic Area (HA)	None Specified (n/s)			
Upper Ojai Hydrologic Subarea (HSA)	None Specified (n/s)			
West of Sulphur Mtn Rd	1,000	300	200	1.0
East of Sulphur Mtn Rd	700	50	100	1.0
Ojai HSA ^b	None Specified (n/s)			
West of San Antonio-Senior Cyn Creek	1,000	300	200	0.5
East of San Antonio-Senior Cyn Creek	700	200	50	0.5
Upper Ventura River HA	None Specified (n/s)			
San Antonio Creek Area	1,000	300	100	1.0
Remainder of ground water basin	800	300	100	0.5
Lower Ventura River HA ^c	None Specified (n/s)			
Santa Clara-Calleguas Hydrologic Unit	None Specified (n/s)			
Upper Santa Clara HA	None Specified (n/s)			
Acton HSA	600	150	100	1.0
Eastern HSA	None Specified (n/s)			
Above Bouquet Cyn ^d	800	150	150	1.0
Above Castaic Creek to Bouquet Cyn ^e	900	300	150	1.0
South Fork of Santa Clara River Area	1,300	800	100	0.5
Placerita Cyn Area	700	150	100	0.5
Castaic Creek to Blue Cut ^f	1,500	700	150	1.0
Bouquet HSA	400	50	30	0.5
Mint Cyn HSA	700	150	100	0.5
Sierra Pelona HSA	600	100	100	0.5
Piru HA	None Specified (n/s)			
Santa Felicia HSA (Piru Subarea)	None Specified (n/s)			
East of Piru Creek ^g	2,500	1,200	200	1.5
West of Piru Creek ^h	1,200	600	100	1.5
Upper Piru HSA	1,100	400	200	2.0
Hungry Valley HSA	500	150	50	1.0
Stauffer HSA	1,000	300	20	2.0
Sespe HA	None Specified (n/s)			
Fillmore HSA	None Specified (n/s)			
Pole Creek Fan underlying	2,000	800	100	1.0
City of Fillmore	None Specified (n/s)			
South Side of Santa Clara River	1,500	800	100	1.1
Remainder of ground water basin	1,000	400	50	0.7
Topa Topa HSA (Sespe Subarea)	900	350	30	2.0
Santa Paula HA	None Specified (n/s)			
Santa Paula HSA	None Specified (n/s)			
East of Peck Rd	1,200	600	100	1.0
West of Peck Rd	2,000	800	110	1.0
Sisar HSA	700	250	100	0.5
Oxnard Plain HA	None Specified (n/s)			
Oxnard HSA	None Specified (n/s)			
Oxnard Forebay	1,200	600	150	1.5
Deep aquifers underlying	1,200	600	150	1.5
pressure area	None Specified (n/s)			
Semiperched aquifer ⁱ	3,000	1,000	500	n/s

<u>Water Quality Objectives for Ground Waters</u>				
<u>Santa Clara River Basin (4A)</u>				
<u>Area</u>	<u>Objective in mg/L</u>			
	<u>TDS</u>	<u>Sulfate</u>	<u>Chloride</u>	<u>Boron</u>
Oxnard Plain HA (continued from previous page)				
Pleasant Valley HSA				
Fox Cyn Aquifer	1,200	600	150	1.0
Grimes Cyn Aquifer	1,200	600	150	1.0
Upper Aquifer ^l	None Specified			
Calleguas-Conejo HA				
West Las Posas HSA	900	350	150	1.0
East Las Posas HSA ^k				
NW of Grimes Cyn Rd, L.A. Avenue and Somis Rd	700	300	100	0.5
East of Grimes Cyn Rd and Hitch Blvd	2,500	1,200	400	3.0
South of L.A. Ave between Somis Rd and Hitch Blvd	1,500	700	250	1.0
Isolated basin near Grimes Cyn Rd and Broadway Rd	250	30	30	0.2
Arroyo Santa Rosa HSA	900	300	150	1.0
Conejo Valley HSA	800	250	150	1.0
Tierra Rejada Valley HSA	700	250	100	0.5
Gillibrand HSA	900	350	50	1.0
Simi Valley HSA				
Deep aquifers	1,200	600	150	1.0
Shallow aquifer ^l	None Specified			
Thousand Oaks HSA	1,400	700	150	1.0

.....Endnotes

- a. Upper aquifers are of very poor quality and not used for domestic, agricultural, or industrial water supply in any significant quantity. Water quality in shallow aquifers shall be maintained at existing levels in accordance with "Resolution 68-16". This is to be accomplished on case-by-case basis as part of the requirements imposed upon dischargers to the shallow aquifers.
- b. Excludes aquifer in Souquet Canyon and tributaries.
- c. Shallow alluvial aquifer is of very poor quality and not used. Water quality in shallow aquifer shall be maintained at existing levels in accordance with "Resolution 68-16". This is to be accomplished on a case-by-case basis as part of the requirements imposed upon dischargers to the shallow aquifer.
- d. See endnote b.
- e. Includes aquifer in Souquet Canyon and tributaries but excludes aquifer in Castaic Creek and the South Fork of Santa Clara River and tributaries.
- f. Includes aquifer in Castaic Creek and tributaries.
- g. Includes aquifer in Piru Creek and tributaries.
- h. Excludes aquifer in Piru Creek and tributaries.
- i. Semiperched aquifer is generally of poor quality, but locally may be used for agricultural and domestic purposes in northwestern parts of the Oxnard Plain. Where shallow well or drainage ditch waters clearly exceed these objectives, requirements should be set on a case-by-case basis according to "Resolution 68-16".
- j. See endnote a.
- k. Some isolated wells along Los Angeles Avenue in the Arroyo Las Posas flood plain have higher mineral levels. Requirements for these areas should be set on a case-by-case basis according to "Resolution 68-16".
- l. See endnote a.

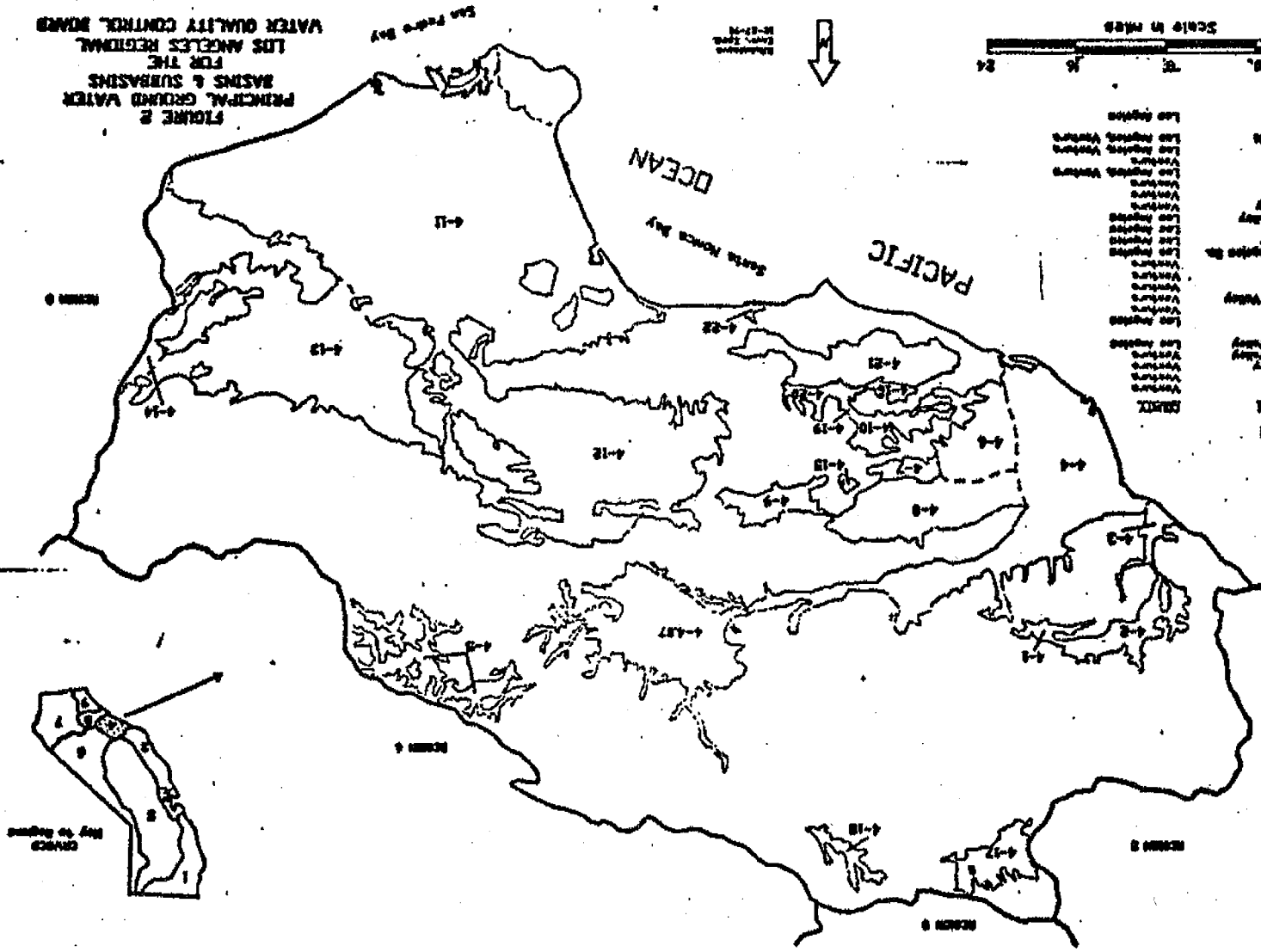
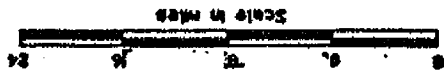
Water Quality Objectives for Ground Waters Los Angeles River Basin (4B)				
Area	Objective in mg/L			
	TDS	Sulfate	Chloride	Boron
<u>Malibu Hydrologic Unit</u>				
Topanga Hydrologic Area (HA)	2,000	500	500	2.0
Malibu Creek Hydrologic Subarea (HSA)	2,000	500	500	2.0
Las Virgenes HSA	2,000	500	500	2.0
Lindero Canyon HSA	2,000	500	500	2.0
Triunfo Canyon HSA	2,000	500	500	2.0
Russell Valley HSA	1,500	500	250	1.0
Sherwood HSA	1,000	250	250	1.0
Point Dume HA	1,000	250	250	1.0
Camarillo HA	1,000	250	250	1.0
<u>Los Angeles-San Gabriel River Hydrologic Unit</u>				
<u>Coastal Plain HA</u>				
West Coast Basin	800	250	250	1.5
Santa Monica Basin	1,000	250	250	0.5
Hollywood Basin	750	100	100	1.0
Central Basin	700	250	250	1.0
<u>San Fernando HA</u>				
Sylmar Basin	600	150	100	0.5
Eagle Rock Basin	800	150	100	0.5
Verdugo Basin	600	150	100	0.5
San Fernando Basin-Overall	800	300	100	1.5
Narrows Area ^a	900	300	150	1.5
Foothill Wells Area ^b	400	100	50	1.0
Headworks Area ^c	700	300	100	1.5
North Hollywood-Burbank Area ^d	600	250	100	1.5
<u>Raymond HA</u>				
Monk Hill HSA	450	100	100	0.5
Pasadena HSA	450	100	100	0.5
Santa Anita HSA	450	100	100	0.5
<u>San Gabriel Valley HA</u>				
Puente Basin ^e	1,000	300	150	1.0
Main San Gabriel Basin-Overall	550	150	100	1.0
Westerly Portion ^f	450	100	100	0.5
Easterly Portion ^g	600	100	100	0.5
<u>Spadra Hydro HA</u>				
Spadra HSA	550	200	120	1.0
Pomona HSA	300	100	50	0.5
Live Oak HSA	450	150	100	0.5
Anaheim HA	1,000	250	250	1.0
<u>San Pedro Channel Island Hydrologic Unit</u>				
Santa Catalina HA	1,000	250	250	1.0
San Clemente Island HA	no significant sources			
Santa Barbara Island HA	no significant sources			
<u>Santa Ana River Hydrologic Unit</u>				
Middle Santa Ana River HA	220	50	50	0.5

.....Endnotes

- a. Narrows Area is defined as that area of the San Fernando Basin adjacent to the Los Angeles River lying south of Verdugo Wash.
- b. Foothill Wells is the main extraction area in the Sundland-Tujunga Area.
- c. Headworks Area is that area lying adjacent to the Los Angeles River upstream of the confluence with Verdugo Wash encompassing in general the City of Los Angeles' Headworks, Crystal Springs, and Verdugo wells and the City of Glendale's wells among others.
- d. The North Hollywood-Burbank Area refers to the principal extraction area which includes the City of Burbank's wells, and the City of Los Angeles, North Hollywood, Erwin, and Whitnall wells among others.
- e. The Puente Basin lies adjacent to San Jose Creek upstream of the Puente Narrows. The Puente Basin and the Puente Narrows are described in the Judgment of the Upper San Gabriel Valley Municipal Water District versus City of Alhambra et al No.924128.
- f. The westerly portion of the Main San Gabriel Basin which lies west of Walnut Creek, Big Dalton Wash, and Little Dalton Wash.
- g. The easterly portion of the Main San Gabriel Basin which lies east of Walnut Creek, Big Dalton Wash, and Little Dalton Wash but does not include the Puente Basin.

FIGURE 2
 PRINCIPAL GROUND WATER
 BASINS & SUBBASINS
 FOR THE
 LOS ANGELES REGIONAL
 WATER QUALITY CONTROL BOARD

Revised
 April, 1968
 M-27-68



LEGEND

- 4-1 Bear River Valley
- 4-2 San Gabriel Valley
- 4-3 San Gabriel Valley
- 4-4 San Gabriel Valley
- 4-5 San Gabriel Valley
- 4-6 San Gabriel Valley
- 4-7 San Gabriel Valley
- 4-8 San Gabriel Valley
- 4-9 San Gabriel Valley
- 4-10 San Gabriel Valley
- 4-11 San Gabriel Valley
- 4-12 San Gabriel Valley
- 4-13 San Gabriel Valley
- 4-14 San Gabriel Valley
- 4-15 San Gabriel Valley
- 4-16 San Gabriel Valley
- 4-17 San Gabriel Valley
- 4-18 San Gabriel Valley
- 4-19 San Gabriel Valley
- 4-20 San Gabriel Valley
- 4-21 San Gabriel Valley
- 4-22 San Gabriel Valley
- 4-23 San Gabriel Valley
- 4-24 San Gabriel Valley
- 4-25 San Gabriel Valley
- 4-26 San Gabriel Valley
- 4-27 San Gabriel Valley
- 4-28 San Gabriel Valley
- 4-29 San Gabriel Valley
- 4-30 San Gabriel Valley
- 4-31 San Gabriel Valley
- 4-32 San Gabriel Valley
- 4-33 San Gabriel Valley
- 4-34 San Gabriel Valley
- 4-35 San Gabriel Valley
- 4-36 San Gabriel Valley
- 4-37 San Gabriel Valley
- 4-38 San Gabriel Valley
- 4-39 San Gabriel Valley
- 4-40 San Gabriel Valley
- 4-41 San Gabriel Valley
- 4-42 San Gabriel Valley
- 4-43 San Gabriel Valley
- 4-44 San Gabriel Valley
- 4-45 San Gabriel Valley
- 4-46 San Gabriel Valley
- 4-47 San Gabriel Valley
- 4-48 San Gabriel Valley
- 4-49 San Gabriel Valley
- 4-50 San Gabriel Valley
- 4-51 San Gabriel Valley
- 4-52 San Gabriel Valley
- 4-53 San Gabriel Valley
- 4-54 San Gabriel Valley
- 4-55 San Gabriel Valley
- 4-56 San Gabriel Valley
- 4-57 San Gabriel Valley
- 4-58 San Gabriel Valley
- 4-59 San Gabriel Valley
- 4-60 San Gabriel Valley
- 4-61 San Gabriel Valley
- 4-62 San Gabriel Valley
- 4-63 San Gabriel Valley
- 4-64 San Gabriel Valley
- 4-65 San Gabriel Valley
- 4-66 San Gabriel Valley
- 4-67 San Gabriel Valley
- 4-68 San Gabriel Valley
- 4-69 San Gabriel Valley
- 4-70 San Gabriel Valley
- 4-71 San Gabriel Valley
- 4-72 San Gabriel Valley
- 4-73 San Gabriel Valley
- 4-74 San Gabriel Valley
- 4-75 San Gabriel Valley
- 4-76 San Gabriel Valley
- 4-77 San Gabriel Valley
- 4-78 San Gabriel Valley
- 4-79 San Gabriel Valley
- 4-80 San Gabriel Valley
- 4-81 San Gabriel Valley
- 4-82 San Gabriel Valley
- 4-83 San Gabriel Valley
- 4-84 San Gabriel Valley
- 4-85 San Gabriel Valley
- 4-86 San Gabriel Valley
- 4-87 San Gabriel Valley
- 4-88 San Gabriel Valley
- 4-89 San Gabriel Valley
- 4-90 San Gabriel Valley
- 4-91 San Gabriel Valley
- 4-92 San Gabriel Valley
- 4-93 San Gabriel Valley
- 4-94 San Gabriel Valley
- 4-95 San Gabriel Valley
- 4-96 San Gabriel Valley
- 4-97 San Gabriel Valley
- 4-98 San Gabriel Valley
- 4-99 San Gabriel Valley
- 4-100 San Gabriel Valley

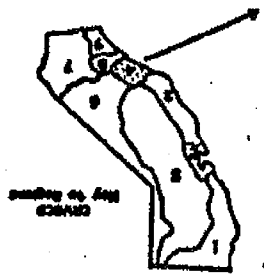
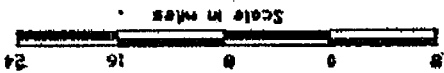
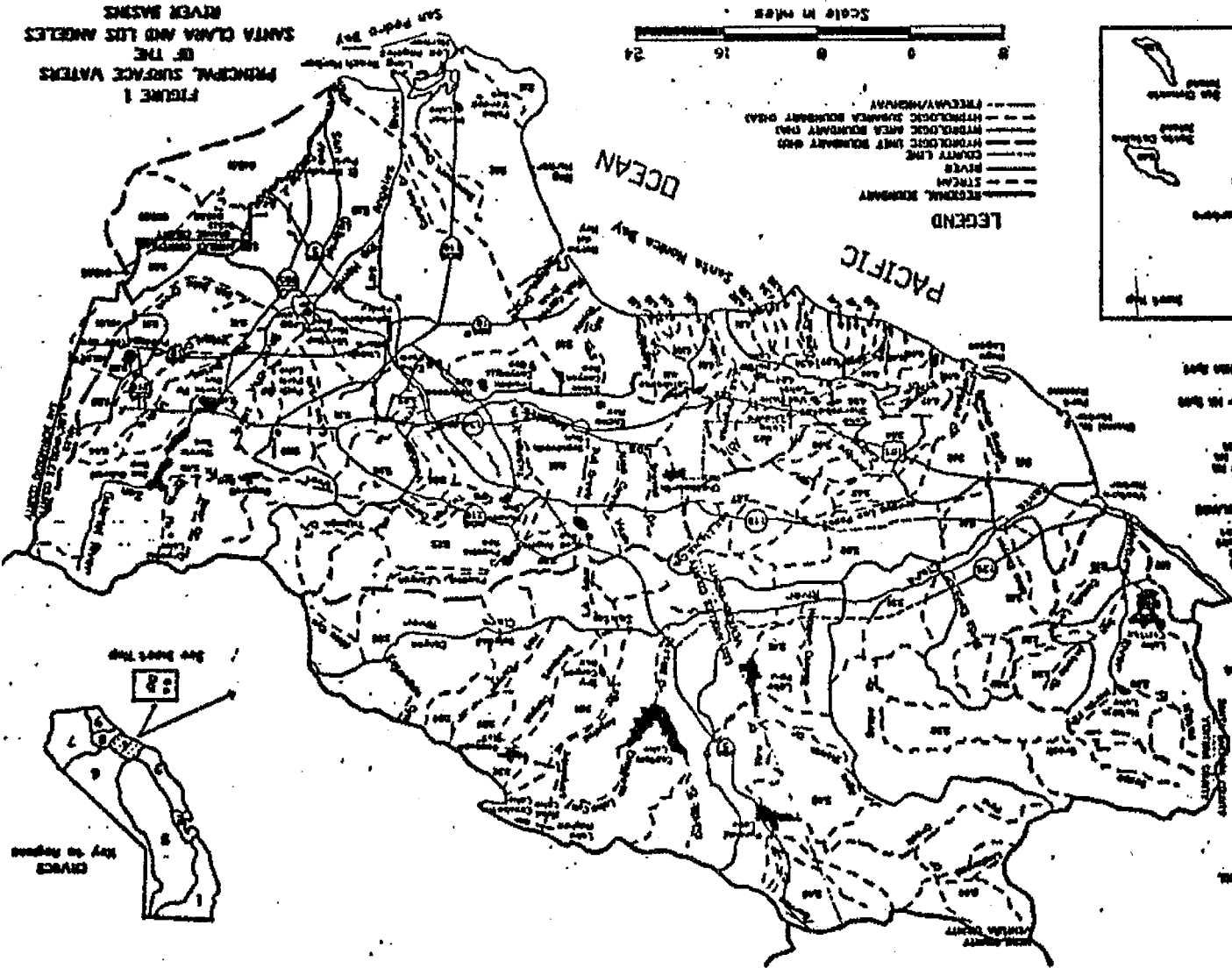
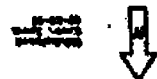
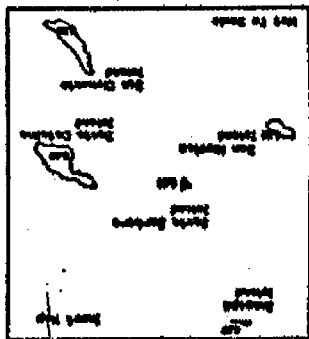


FIGURE 1
PRINCIPAL SURFACE WATERS
OF THE
SANTA CLARA AND LOS ANGELES
RIVER BASINS



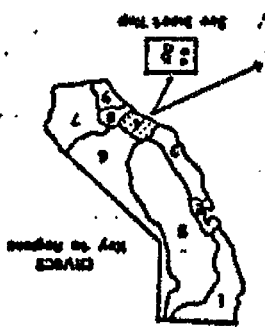
LEGEND

- REGIONAL BOUNDARY
- COUNTY LINE
- HYDROLOGIC UNIT BOUNDARY (100)
- HYDROLOGIC AREA BOUNDARY (500)
- FRESHWATER/SEAWATER
- STEAM
- RIVER
- STREAM



0000	LOS ANGELES RIVER BASIN
0001	LOS ANGELES RIVER BASIN
0002	LOS ANGELES RIVER BASIN
0003	LOS ANGELES RIVER BASIN
0004	LOS ANGELES RIVER BASIN
0005	LOS ANGELES RIVER BASIN
0006	LOS ANGELES RIVER BASIN
0007	LOS ANGELES RIVER BASIN
0008	LOS ANGELES RIVER BASIN
0009	LOS ANGELES RIVER BASIN
0010	LOS ANGELES RIVER BASIN
0011	LOS ANGELES RIVER BASIN
0012	LOS ANGELES RIVER BASIN
0013	LOS ANGELES RIVER BASIN
0014	LOS ANGELES RIVER BASIN
0015	LOS ANGELES RIVER BASIN
0016	LOS ANGELES RIVER BASIN
0017	LOS ANGELES RIVER BASIN
0018	LOS ANGELES RIVER BASIN
0019	LOS ANGELES RIVER BASIN
0020	LOS ANGELES RIVER BASIN
0021	LOS ANGELES RIVER BASIN
0022	LOS ANGELES RIVER BASIN
0023	LOS ANGELES RIVER BASIN
0024	LOS ANGELES RIVER BASIN
0025	LOS ANGELES RIVER BASIN
0026	LOS ANGELES RIVER BASIN
0027	LOS ANGELES RIVER BASIN
0028	LOS ANGELES RIVER BASIN
0029	LOS ANGELES RIVER BASIN
0030	LOS ANGELES RIVER BASIN
0031	LOS ANGELES RIVER BASIN
0032	LOS ANGELES RIVER BASIN
0033	LOS ANGELES RIVER BASIN
0034	LOS ANGELES RIVER BASIN
0035	LOS ANGELES RIVER BASIN
0036	LOS ANGELES RIVER BASIN
0037	LOS ANGELES RIVER BASIN
0038	LOS ANGELES RIVER BASIN
0039	LOS ANGELES RIVER BASIN
0040	LOS ANGELES RIVER BASIN
0041	LOS ANGELES RIVER BASIN
0042	LOS ANGELES RIVER BASIN
0043	LOS ANGELES RIVER BASIN
0044	LOS ANGELES RIVER BASIN
0045	LOS ANGELES RIVER BASIN
0046	LOS ANGELES RIVER BASIN
0047	LOS ANGELES RIVER BASIN
0048	LOS ANGELES RIVER BASIN
0049	LOS ANGELES RIVER BASIN
0050	LOS ANGELES RIVER BASIN
0051	LOS ANGELES RIVER BASIN
0052	LOS ANGELES RIVER BASIN
0053	LOS ANGELES RIVER BASIN
0054	LOS ANGELES RIVER BASIN
0055	LOS ANGELES RIVER BASIN
0056	LOS ANGELES RIVER BASIN
0057	LOS ANGELES RIVER BASIN
0058	LOS ANGELES RIVER BASIN
0059	LOS ANGELES RIVER BASIN
0060	LOS ANGELES RIVER BASIN
0061	LOS ANGELES RIVER BASIN
0062	LOS ANGELES RIVER BASIN
0063	LOS ANGELES RIVER BASIN
0064	LOS ANGELES RIVER BASIN
0065	LOS ANGELES RIVER BASIN
0066	LOS ANGELES RIVER BASIN
0067	LOS ANGELES RIVER BASIN
0068	LOS ANGELES RIVER BASIN
0069	LOS ANGELES RIVER BASIN
0070	LOS ANGELES RIVER BASIN
0071	LOS ANGELES RIVER BASIN
0072	LOS ANGELES RIVER BASIN
0073	LOS ANGELES RIVER BASIN
0074	LOS ANGELES RIVER BASIN
0075	LOS ANGELES RIVER BASIN
0076	LOS ANGELES RIVER BASIN
0077	LOS ANGELES RIVER BASIN
0078	LOS ANGELES RIVER BASIN
0079	LOS ANGELES RIVER BASIN
0080	LOS ANGELES RIVER BASIN
0081	LOS ANGELES RIVER BASIN
0082	LOS ANGELES RIVER BASIN
0083	LOS ANGELES RIVER BASIN
0084	LOS ANGELES RIVER BASIN
0085	LOS ANGELES RIVER BASIN
0086	LOS ANGELES RIVER BASIN
0087	LOS ANGELES RIVER BASIN
0088	LOS ANGELES RIVER BASIN
0089	LOS ANGELES RIVER BASIN
0090	LOS ANGELES RIVER BASIN
0091	LOS ANGELES RIVER BASIN
0092	LOS ANGELES RIVER BASIN
0093	LOS ANGELES RIVER BASIN
0094	LOS ANGELES RIVER BASIN
0095	LOS ANGELES RIVER BASIN
0096	LOS ANGELES RIVER BASIN
0097	LOS ANGELES RIVER BASIN
0098	LOS ANGELES RIVER BASIN
0099	LOS ANGELES RIVER BASIN
0100	LOS ANGELES RIVER BASIN

REGION 4 INDEX



Attachment "B"

**State Department of Health Services
Primary Drinking Water Standards
Secondary Drinking Water Standards**

Priority Pollutants

Attachment "B": Drinking Water Standards and Priority Pollutants

State DHS Primary Drinking Water Standards, Maximum Contaminant Level (MCL)		MCL	
constituent	MCL	constituent	MCL
Organic compounds, MCL units of milligrams per liter (mg/L)			
1,1-Dichloroethane (1,1-DCA)	0.005	1,1,1-Trichloroethane (1,1,1-TCA)	0.200
1,1,2-Trichloroethane (1,1,2-TCA)	0.032	1,1,2-Trichloroethane (1,1,2-TCA)	0.005
1,2-Dichloroethane (1,2-DCA)	0.005	1,3-Dichloropropane	*a
1,3-Dichloropropane	*a	1,4-Dichlorobenzene (p-DCB)	0.005
2,4-D	0.1	2,4,5-TP (Silvex)	0.05
Atrazine (Aatrex)	0.003	Benazon (Basagran)	0.018
Benzene	0.001	Bromodichloromethane	*a
Carbon tetrachloride	0.0005	Carbofuran (Furadan)	0.018
Chlorobenzene (Monochlorobenzene)	0.030	Chlordane	0.0001
cis-1,2-Dichloroethylene	0.006	Chloroform	*a
Dibromochloromethane	*a	Di(2-ethylhexyl)phthalate (DEHP)	0.004
Endrin	0.0002	Dibromochloropropane (DBCP)	0.0002
Ethylene dibromide (EDB)	0.00002	Ethylbenzene (Phenylethane)	0.680
Heptachlor epoxide	0.00001	Glyphosate	0.7
Lindane (gamma-BHC)	0.004	Heptachlor	0.00001
Molinate (Ordram)	0.02	Methoxychlor	0.1
Tetrachloroethene (PCE)	0.005	Simazine (Princep)	0.01
Toxaphene	0.005	Thiobencarb (Bolero)	0.07
Trichloroethene (TCE)	0.005	trans-1,2-Dichloroethylene	0.01
Vinyl chloride (VC)	0.0005	Trichlorofluoromethane (Freon 11)	0.15
		Xylenes	1.75

State DHS Primary Drinking Water Standards, Maximum Contaminant Level (MCL)			
MCL	Constituent	MCL	Constituent
Inorganic/Physical Constituents, MCL units of milligrams/liter (mg/L)			
1.0	Aluminum (Al)	0.05	Arsenic (As)
1.0	Barium (Ba)	0.01	Cadmium (Cd)
0.05	Chromium, total (Cr)	2.4	Fluoride (F) temp < 53.7 °F
2.2	Fluoride (F) temp 53.8-58.3 °F	2.0	Fluoride (F) temp 58.4-63.8 °F
1.8	Fluoride (F) temp 63.9-70.6 °F	1.6	Fluoride (F) temp 70.7-79.2 °F
1.4	Fluoride (F) temp 79.3-90.5 °F	0.05	Lead (Pb)
0.002	Mercury (Hg)	45.0	Nitrate (NO ₃)
0.01	Selenium (Se)	0.05	Silver (Ag)
Radio Chemistry, MCL units of pico Curies per liter (pCi/L)			
15 (pCi/L)	Gross Alpha (α)	50 (pCi/L)	Gross Beta (β)
5 (pCi/L)	Combined Radium 226+228 (Ra ^{226,228})	8 (pCi/L)	Strontium-90 (Sr ⁹⁰)

State DHS Secondary Drinking Water Standards			
MCL (units)	Constituent	MCL (units)	Constituent
250 mg/L	Chloride (Cl)	15 units	Color
900 μmhos	Conductivity	1.0 mg/L	Copper (Cu)
0.5 units	Foaming agent (MBAS)	0.3 mg/L	Iron (Fe)
0.05 mg/L	Manganese (Mn)	250 mg/L	Sulfate (SO ₄)
500 mg/L	Total dissolved solids (TDS)	5 units	Turbidity
5.0 mg/L	Zinc (Zn)		

Priority Pollutants: Acid Extractables	
2,4-Trichlorophenol	P-Chloro-N-Cresol
2,4-Dichlorophenol	2,4-Dimethylphenol
4-Nitrophenol	2,4-Dinitrophenol
Pentachlorophenol	Phenol

Priority Pollutants: Base/Neutral Extractables	
Acenaphthene	Benzidine
Hexachlorobenzene	Hexachloroethane
2-Chloronaphthalene	1,2-Dichlorobenzene
1,4-Dichlorobenzene	3,3'-Dichlorobenzidine
2,6-Dinitrotoluene	1,2-Diphenylhydrazine
4-Chlorophenyl phenyl ether	4-Bromophenyl phenyl ether
Bis (2-Chloroethoxy) methane	Hexachlorobutadiene
Isophorone	Naphthalene
N-Nitrosodimethylamine	N-Nitrosodi-n-propylamine
Bis (2-Ethylhexyl) phthalate	Butyl benzyl phthalate
Di-N-octyl phthalate	Diethyl phthalate
Benzo (A) Anthracene	Benzo (A) Pyrene
Benzo (K) Fluoranthene	Chrysene
Anthracene	1,12-Benzoperylene
Phenanthrene	1,2,5,6-Dibenzanthracene
Pyrene	TCDD

Attachment "B": Drinking Water Standards and Priority Pollutants

Priority Pollutants: Pesticides		
Aldrin	Chlordane	Dieldrin
4,4'-DDE	4,4'-DDE	4,4'-DDD
Alpha endosulfan	Beta endosulfan	Endosulfan sulfate
Endrin	Endrin aldehyde	Heptachlor
Heptachlor epoxide	Alpha BHC	Beta BHC
Gamma BHC	Delta BHC	Toxaphene
PCB 1016	PCB 1221	PCB 1232
PCB 1242	PCB 1248	PCB 1254
PCB 1260		

Priority Pollutants: Volatile Organics		
Acrolein	Acrylonitrile	Benzene
Carbon tetrachloride	Chlorobenzene	1,2-Dichloroethane
1,1,1-Trichloroethane	1,1-Dichloroethane	1,1,2-Trichloroethane
1,1,2,2-Tetrachloroethane	Chloroethane	Chloroform
1,1-Dichloroethylene	1,2-Transdichloroethylene	1,2-Dichloropropane
1,2-Dichloropropylene	Ethylbenzene	Methylene chloride
Methyl chloride	Methyl bromide	Bromoform
Bromodichloromethane	Dibromochloromethane	Tetrachloroethylene
Toluene	Trichloroethylene	Vinyl chloride
2-Chloroethyl vinyl ether		

Attachment "B": Drinking Water Standards and Priority Pollutants

Priority Pollutants: Metals & Miscellaneous	
Antimony (Sb)	Arsenic (As)
Cadmium (Cd)	Chromium (Cr)
Lead (Pb)	Mercury (Hg)
Selenium (Se)	Silver (Ag)
Zinc (Zn)	Cyanide (CN ⁻)
	Beryllium (Be)
	Copper (Cu)
	Nickel (Ni)
	Thallium (Tl)
	Asbestos (H ₂ Mg ₃ Si ₂ O ₉)

.....Endnote

1. * (DHS note) Unregulated: monitoring required for all community and non-transient, non-community water systems

STANDARD PROVISIONS
APPLICABLE TO WASTE DISCHARGE REQUIREMENTS

1. DUTY TO COMPLY

The discharger must comply with all conditions of these waste discharge requirements. A responsible party has been designated in the Order for this project, and is legally bound to maintain the monitoring program and permit. Violations may result in enforcement actions, including Regional Board orders or court orders requiring corrective action or imposing civil monetary liability, or in modification or revocation of these waste discharge requirements by the Regional Board. [CWC Section 13261, 13263, 13265, 13268, 13300, 13301, 13304, 13340, 13350]

2. GENERAL PROHIBITION

Neither the treatment nor the discharge of waste shall create a pollution, contamination or nuisance, as defined by Section 13050 of the California Water Code (CWC). [H&SC Section 5411, CWC Section 13263]

3. AVAILABILITY

A copy of these waste discharge requirements shall be maintained at the discharge facility and be available at all times to operating personnel. [CWC Section 13263]

4. CHANGE IN OWNERSHIP

The discharger must notify the Executive Officer, in writing at least 30 days in advance of any proposed transfer of this Order's responsibility and coverage to a new discharger containing a specific date for the transfer of this Order's responsibility and coverage between the current discharger and the new discharger. This agreement shall include an acknowledgement that the existing discharger is liable for violations up to the transfer date and that the new discharger is liable from the transfer date on. [CWC Sections 13267 and 13263]

5. CHANGE IN DISCHARGE

In the event of a material change in the character, location, or volume of a discharge, the discharger shall file with this Regional Board a new Report of Waste Discharge. [CWC Section 13260(c)]. A material change includes, but is not limited to, the following:

- (a) Addition of a major industrial waste discharge to a discharge of essentially domestic sewage, or the addition of a new process or product by an industrial facility resulting in a change in the character of the Waste.

November 7, 1990
WDR

Standard Provisions Applicable to
Waste Discharge Requirements

- (b) Significant change in disposal method, e.g., change from a land disposal to a direct discharge to water, or change in the method of treatment which would significantly alter the characteristics of the waste.
- (c) Significant change in the disposal area, e.g., moving the discharge to another drainage area, to a different water body, or to a disposal area significantly removed from the original area potentially causing different water quality or nuisance problems.
- (d) Increase in flow beyond that specified in the waste discharge requirements.
- (e) Increase in the area or depth to be used for solid waste disposal beyond that specified in the waste discharge requirements. [CCR Title 23 Section 2210]

6. REVISION

These waste discharge requirements are subject to review and revision by the Regional Board. [CCR Section 13263]

7. TERMINATION

Where the discharger becomes aware that it failed to submit any relevant facts in a Report of Waste Discharge or submitted incorrect information in a Report of Waste Discharge or in any report to the Regional Board, it shall promptly submit such facts or information. [CWC Sections 13260 and 13267]

8. VESTED RIGHTS

This Order does not convey any property rights of any sort or any exclusive privileges. The requirements prescribed herein do not authorize the commission of any act causing injury to persons or property, do not protect the discharger from his liability under Federal, State or local laws, nor do they create a vested right for the discharger to continue the waste discharge. [CWC Section 13263(g)]

9. SEVERABILITY

Provisions of these waste discharge requirements are severable. If any provision of these requirements are found invalid, the remainder of the requirements shall not be affected. [CWC Section 921]

Standard Provisions Applicable to
Waste Discharge Requirements

10. OPERATION AND MAINTENANCE

The discharger shall, at all times, properly operate and maintain all facilities and systems of treatment and control (and related appurtenances) which are installed or used by the discharger to achieve compliance with conditions of this Order. Proper operation and maintenance includes effective performance, adequate funding, adequate operator staffing and training, and adequate laboratory and process controls including appropriate quality assurance procedures. This provision requires the operation of backup or auxiliary facilities or similar systems only when necessary to achieve compliance with the conditions of this Order. [CWC Section 13263(f)]

11. HAZARDOUS RELEASES

Except for a discharge which is in compliance with these waste discharge requirements, any person who, without regard to intent or negligence, causes or permits any hazardous substance or sewage to be discharged in or on any waters of the State, or discharged or deposited where it is, or probably will be, discharged in or on any waters of the State, shall, as soon as (a) that person has knowledge of the discharge, (b) notification is possible, and (c) notification can be provided without substantially impeding cleanup or other emergency measures, immediately notify the Office of Emergency Services of the discharge in accordance with the spill reporting provision of the State toxic disaster contingency plan adopted pursuant to Article 3.7 (commencing with Section 8574.7) of Chapter 7 of Division 1 of Title 2 of the Government Code, and immediately notify the State Board or the appropriate Regional Board of the discharge. This provision does not require reporting of any discharge of less than a reportable quantity as provided for under subdivisions (f) and (g) of Section 13271 of the Water Code unless the discharger is in violation of a prohibition in the applicable Water Quality Control plan. [CWC Section 1327(a)]

12. PETROLEUM RELEASES

Except for a discharge which is in compliance with these waste discharge requirements, any person who without regard to intent or negligence, causes or permits any oil or petroleum product to be discharged in or on any waters of the State, or discharged or deposited where it is, or probably will be, discharged in or on any waters of the State, shall, as soon as (a) such person has knowledge of the discharge, (b) notification is possible, and (c) notification can be provided without substantially impeding cleanup or other emergency measures, immediately notify the Office of Emergency Services of the discharge in accordance with the spill reporting provision of the State oil spill contingency plan adopted pursuant to Article 3.5 (commencing with Section 8574.1) of Chapter 7 of Division 1 of Title 2 of the Government Code. This provision does not require reporting of any discharge of less than 42 gallons unless the discharge is also required to be reported pursuant to Section 311 of the Clean Water Act or the discharge is in violation of a prohibition in the applicable Water Quality Control Plan. [CWC Section 13272]

Standard Provisions Applicable to
Waste Discharge Requirements

13. ENTRY AND INSPECTION

The discharger shall allow the Regional Board, or an authorized representative upon the presentation of credentials and other documents as may be required by law, to:

- (a) Enter upon the discharger's premises where a regulated facility or activity is located or conducted, or where records must be kept under the conditions of this Order;
- (b) Have access to and copy, at reasonable times, any records that must be kept under the conditions of this Order;
- (c) Inspect at reasonable times any facilities, equipment (including monitoring and control equipment), practices, or operations regulated or required under this Order; and
- (d) Sample or monitor at reasonable times, for the purposes of assuring compliance with this Order, or as otherwise authorized by the California Water Code, any substances or parameters at any location. [CWC Section 13267]

14. MONITORING PROGRAM AND DEVICES

The discharger shall furnish, under penalty of perjury, technical monitoring program reports; such reports shall be submitted in accordance with specifications prepared by the Executive Officer, which specifications are subject to periodic revisions as may be warranted. [CWC Section 13267]

All monitoring instruments and devices used by the discharger to fulfill the prescribed monitoring program shall be properly maintained and calibrated as necessary to ensure their continued accuracy. All flow measurement devices shall be calibrated at least once per year, or more frequently, to ensure continued accuracy of the devices. Annually, the discharger shall submit to the Executive Office a written statement, signed by a registered professional engineer, certifying that all flow measurement devices have been calibrated and will reliably achieve the accuracy required.

Unless otherwise permitted by the Regional Board Executive officer, all analyses shall be conducted at a laboratory certified for such analyses by the State Department of Health Services. The Regional Board Executive Officer may allow use of an uncertified laboratory under exceptional circumstances, such as when the closest laboratory to the monitoring location is outside the State boundaries and therefore not subject to certification. All analyses shall be required to be conducted in accordance with the latest edition of "Guidelines Establishing Test Procedures for Analysis of Pollutants" [40CFR Part 136] promulgated by the U.S. Environmental Protection Agency. [CCR Title 23, Section 2230]

Standard Provisions Applicable to
Waste Discharge Requirements

15. TREATMENT FAILURE

In an enforcement action, it shall not be a defense for the discharger that it would have been necessary to halt or to reduce the permitted activity in order to maintain compliance with this Order. Upon reduction, loss, or failure of the treatment facility, the discharger shall, to the extent necessary to maintain compliance with this Order, control production or all discharges, or both, until the facility is restored or an alternative method of treatment is provided. This provision applies, for example, when the primary source of power of the treatment facility fails, is reduced, or is lost. [CWC Section 13263(f)]

16. DISCHARGE TO NAVIGABLE WATERS

Any person discharging or proposing to discharge to navigable waters from a point source (except for discharge of dredged or fill material subject to Section 404 of the Clean Water Act and discharge subject to a general NPDES permit) must file an NPDES permit application with the Regional Board. [CCR Title 2 Section 22357]

17. ENDANGERMENT TO HEALTH AND ENVIRONMENT

The discharger shall report any noncompliance which may endanger health or the environment. Any such information shall be provided verbally to the Executive Officer within 24 hours from the time the discharger becomes aware of the circumstances. A written submission shall also be provided within five days of the time the discharger becomes aware of the circumstances. The written submission shall contain a description of the noncompliance and its cause; the period of noncompliance, including exact dates and times, and if the noncompliance has not been corrected; the anticipated time it is expected to continue and steps taken or planned to reduce, eliminate, and prevent recurrence of the noncompliance. The Executive officer, or an authorized representative, may waive the written report on a case-by-case basis if the oral report has been received within 24 hours. The following occurrence(s) must be reported to the Executive Office within 24 hours:

- (a) Any bypass from any portion of the treatment facility.
- (b) Any discharge of treated or untreated wastewater resulting from sewer line breaks, obstruction, surcharge or any other circumstances.
- (c) Any treatment plan upset which causes the effluent limitation of this Order to be exceeded. [CWC Sections 13263 and 13267]

18. MAINTENANCE OF RECORDS

The discharger shall retain records of all monitoring information including all calibration and maintenance records, all original strip chart recordings for continuous monitoring instrumentation, copies of all reports required by this Order, and record of all data used

Standard Provisions Applicable to
Waste Discharge Requirements

to complete the application for this Order. Records shall be maintained for a minimum of three years from the date of the sample, measurement, report, or application. This period may be extended during the course of any unresolved litigation regarding this discharge or when requested by the Regional Board Executive Officer.

Records of monitoring information shall include:

- (a) The date, exact place, and time of sampling or measurement;
 - (b) The individual(s) who performed the sampling or measurement;
 - (c) The date(s) analyses were performed;
 - (d) The individual(s) who performed the analyses;
 - (e) The analytical techniques or method used; and
 - (f) The results of such analyses.
19. (a) All application reports or information to be submitted to the Executive Office shall be signed and certified as follows:
- (1) For a corporation – by a principal executive officer or at least the level of vice president.
 - (2) For a partnership or sole proprietorship – by a general partner or the proprietor, respectively.
 - (3) For a municipality, state, federal, or other public agency – by either a principal executive officer or ranking elected official.
- (b) A duly authorized representative of a person designated in paragraph (a) of this provision may sign documents if:
- (1) The authorization is made in writing by a person described in paragraph (a) of this provision.
 - (2) The authorization specifies either an individual or position having responsibility for the overall operation of the regulated facility or activity; and
 - (3) The written authorization is submitted to the Executive Officer.

Any person signing a document under this Section shall make the following certification:

Standard Provisions Applicable to
Waste Discharge Requirements

"I certify under penalty of law that I have personally examined and am familiar with the information submitted in this document and all attachments and that, based on my inquiry of those individuals immediately responsible for obtaining the information, I believe that the information is true, accurate, and complete. I am aware that there are significant penalties for submitting false information, including the possibility of fine and imprisonment. [CWC Sections 13263, 13267, and 13268]"

20. OPERATOR CERTIFICATION

Supervisors and operators of municipal wastewater treatment plants and privately owned facilities regulated by the PUC, used in the treatment or reclamation of sewage and industrial waste shall possess a certificate of appropriate grade in accordance with Title 23, California Code of Regulations Section 3680. State Boards may accept experience in lieu of qualification training. In lieu of a properly certified wastewater treatment plant operator, the State Board may approve use of a water treatment plant operator of appropriate grade certified by the State Department of Health Services where reclamation is involved.

Each plan shall be operated and maintained in accordance with the operation and maintenance manual prepared by the municipality through the Clean Water Grant Program [CWC Title 23, Section 2233(d)]

ADDITIONAL PROVISIONS APPLICABLE TO
PUBLICLY OWNED TREATMENT WORKS' ADEQUATE CAPACITY

21. Whenever a publicly owned wastewater treatment plant will reach capacity within four years the discharger shall notify the Regional Board. A copy of such notification shall be sent to appropriate local elected officials, local permitting agencies and the press. The discharger must demonstrate that adequate steps are being taken to address the capacity problem. The discharger shall submit a technical report to the Regional Board showing flow volumes will be prevented from exceeding capacity, or how capacity will be increased, within 120 days after providing notification to the Regional Board, or within 120 days after receipt of notification from the Regional Board, of a finding that the treatment plant will reach capacity within four years. The time for filing the required technical report may be extended by the Regional Board. An extension of 30 days may be granted by the Executive Officer, and longer extensions may be granted by the Regional Board itself. [CCR Title 23, Section 2232]

**STATE OF CALIFORNIA
CALIFORNIA REGIONAL WATER QUALITY CONTROL BOARD
LOS ANGELES REGION**

**MONITORING AND REPORTING PROGRAM NO. CI-9401
FOR
VENTURA COUNTY WATERSHED PROTECTION DISTRICT**

**ENROLLMENT UNDER REGIONAL BOARD
ORDER NO. 93-010 (SERIES NO. 031)
FILE NO. 08-043**

I. REPORTING REQUIREMENTS

- A. Mary Bergen (hereinafter Discharger) shall implement this Monitoring and Reporting Program on the effective date of this enrollment (May 28, 2009) under Regional Board order No. 93-010. The first monitoring report under this program, for April – June 2009, shall be received at the Regional Board by August 15, 2009. Subsequent monitoring reports shall be received at the Regional Board according to the following schedule:

<u>Reporting Period</u>	<u>Report Due</u>
January – March	May 15
April – June	August 15
July – September	November 15
October – December	February 15

- B. If there is no discharge during any reporting period, the report shall so state. Monitoring reports must be addressed to the Regional Board, Attention: Information Technology Unit.
- C. By January 30th of each year, beginning January 30, 2004, the Discharger shall submit an annual summary report to the Regional Board. The report shall contain both tabular and graphical summaries of the monitoring data obtained during the previous calendar year. In addition, the Discharger shall discuss the compliance record and the corrective actions taken, or planned, which may be needed to bring the discharge into full compliance with the waste discharge requirements.
- D. Laboratory analyses – all chemical, bacteriological, and toxicity analyses shall be conducted at a laboratory certified for such analyses by the California Department of Health Services Environmental Laboratory Accreditation Program (ELAP). A copy of the laboratory certification shall be provided each time a new and/or renewal is obtained from ELAP.

May 28, 2009

- E. The method limits (MLs) employed for effluent analyses shall be lower than the permit limits established for a given parameter, unless the Discharger can demonstrate that a particular ML is not attainable and obtains approval for a higher ML from the Executive Officer. The Discharger shall submit a list of the analytical methods employed for each test and the associated laboratory quality assurance/quality control (QA/QC) procedures upon request by the Regional Board.
- F. Water/wastewater samples must be analyzed within allowable holding time limits as specified in 40 CFR Part 136.3. All QA/QC samples must be run on the same dates when samples were actually analyzed. The Discharger shall make available for inspection and/or submit the QA/QC documentation upon request by Regional Board staff.
- G. Each monitoring report must affirm in writing that "All analyses were conducted at a laboratory certified for such analyses by the California Department of Health Services, and in accordance with current United States Environmental Protection Agency (USEPA) guideline procedures or as specified in this Monitoring Program." Proper chain of custody procedures must be followed and a copy of the completed chain of custody form shall be submitted with the report.
- H. Each monitoring report shall contain a separate section titled "Summary of Non-Compliance" which discusses the compliance record and the corrective actions taken or planned that may be needed to bring the discharge into full compliance with waste discharge requirements. This section shall be located at the front of the report and shall clearly list all non-compliance with discharge requirements, as well as all excursions of effluent limitations.
- I. The Discharger shall maintain all sampling and analytical results: date, exact place, and time of sampling; dates analyses were performed; analyst's name; analytical techniques used; and results of all analyses. Such records shall be retained for a minimum of three years. This period of retention shall be extended during the course of any unresolved litigation regarding this discharge, or when requested by the Regional Board.
- J. In reporting the monitoring data, the Discharger shall arrange the data in tabular form so that the date, the constituents, and the concentrations are readily discernible. The data shall be summarized to demonstrate compliance with the requirements and, where applicable, shall include results of receiving water observations.
- K. Any mitigation/remedial activity including any pre-discharge treatment conducted at the site must be reported in the quarterly monitoring report.

II. WATER QUALITY MONITORING REQUIREMENTS

A. Maintenance reporting: The Discharger shall submit a quarterly operation and maintenance report of the disposal area of the water. The information to be contained in the report shall include, at a minimum, the following:

1. The name and address of the person or company responsible for the operation and maintenance of the area;
2. Type of maintenance (preventive or corrective action performed);
3. Frequency of maintenance, if preventive;
4. Description of any changes in the discharge approach, if any; and
5. Verification that there is no runoff from the disposal area to surface waters.

B. A sampling station shall be located where representative samples of that effluent can be obtained. The following shall constitute the effluent monitoring program:

<u>Constituent</u>	<u>Unit</u>	<u>Type of Sample</u>	<u>Minimum Frequency of Analysis</u>
Total flow	gal/day	N/A	Daily
pH	pH Units	grab	Beginning & End of Discharge
Total dissolved solids	mg/L	grab	Beginning & End of Discharge
Sulfate	mg/L	grab	Beginning & End of Discharge
Chloride	mg/l	grab	Beginning & End of Discharge
Boron	mg/L	grab	Beginning & End of Discharge

III. MONITORING FREQUENCY

Specifications in this monitoring program are subject to periodic revisions. Monitoring requirements may be modified or revised by the Executive Officer based on review of monitoring data submitted pursuant to this Order. Monitoring frequencies may be adjusted to a less frequent basis or parameters and locations dropped by the Executive Officer if the Discharger makes a request and the request is backed by statistical trends of monitoring data submitted.

IV. CERTIFICATION STATEMENT

Each report shall contain the following completed declaration:

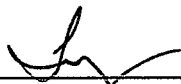
"I certify under penalty of law that this document, including all attachments and supplemental information, was prepared under my direction or supervision in accordance with a system designed to assure that qualified personnel properly gathered and evaluated the information submitted. Based on my inquiry of the person or persons who manage the system, or those persons directly responsible for gathering the information, the information submitted is, to the best of my knowledge and belief, true, accurate, and complete. I am aware that there are significant penalties for submitting false information, including the possibility of a fine and imprisonment.

Executed on the _____ day of _____ at _____.

(Signature)

(Title)"

These records and reports are public documents and shall be made available for inspection during normal business hours at the office of the California Regional Water Quality Control Board, Los Angeles Region.

Ordered by: 

Tracy J. Egoscue
Executive Officer

Date: May 28, 2009