



Central Valley Regional Water Quality Control Board

13 November 2024

Jason B. Miller
California Department of Transportation
1975 East Shield Street
Stockton, CA 95205
Jason.B.Miller@dot.ca.gov

NOTICE OF APPLICABILITY FOR COVERAGE UNDER ORDER NO. 2004-0004-DWQ, STATEWIDE GENERAL WASTE DISCHARGE REQUIREMENTS FOR DREDGED OR FILL DISCHARGES TO WATERS DEEMED BY THE U.S. ARMY CORPS OF ENGINEERS TO BE OUTSIDE OF FEDERAL JURISDICTION, CALIFORNIA DEPARTMENT OF TRANSPORTATION, CALTRANS EA:10-1L490 AMA-SR88, CULVERT REPLACEMENT PROJECT (WDID#5B03CR00102), AMADOR COUNTY

On 5 September 2024, Caltrans submitted a Notice of Intent (NOI) to enroll under and comply with State Water Resources Control Board (State Water Board) Order No. 2004-0004-DWQ, Statewide General Waste Discharge Requirements for Dredged or Fill Discharges to Waters Deemed by the United States. Army Corps of Engineers to be Outside of Federal Jurisdiction.

The Central Valley Water Quality Control Board (Central Valley Water Board) has reviewed your enrollment materials and finds the Caltrans EA:10-1L490 AMA-SR88, Culvert Replacement Project (Project) meets the requirements of, and is hereby enrolled under, Order No. 2004-0004-DWQ. You may proceed with your Project in accordance with the Order.

A copy of [Order 2004-0004-DWQ](https://www.waterboards.ca.gov/board_decisions/adopted_orders/water_quality/2004/wqo/wqo2004-0004.pdf) (https://www.waterboards.ca.gov/board_decisions/adopted_orders/water_quality/2004/wqo/wqo2004-0004.pdf) can be found on the State Water Resources Control Board's Adopted Orders webpage and is enclosed.

Please familiarize yourself with the requirements of Order No. 2004-0004-DWQ. You are responsible for complying with all applicable Order requirements. Failure to comply with Order No. 2004-0004-DWQ constitutes a violation of the California Water Code and may result in enforcement action or termination of enrollment under the Order.

PROJECT DESCRIPTION:

At Location 1, the existing 18-inch corrugated steel pipe (CSP) culvert will be replaced with a 24-inch reinforced concrete pipe (RCP) culvert with rubber gasket joints (RGJ). At

the culvert inlet, the existing grate metal pipe (GMP) will be replaced in kind with 2-foot side openings. At the culvert outlet, a 24-inch concrete flared end section (FES) will be installed along with rock slope protection (RSP). Standard culvert backfill will be placed at both the inlet and outlet. Grading will occur immediately upstream and downstream of the culvert.

At Location 2, the existing 18-inch CSP culvert will be replaced with a 24-inch RCP RGJ culvert. RSP will be installed at the culvert outlet. A 24-inch Concrete FES will be installed at both the culvert inlet and outlet. Grading will occur immediately upstream and downstream of the culvert. The Project will temporarily impact 0.014 acre/42 linear feet and permanently impact 0.004 acre/31 linear feet of stream channel. Temporarily impacted areas will be restored to pre-Project condition.

PROJECT LOCATION:

The Project is located at 2 locations on State Route (SR) 88 in Amador County (AMA). Location 1 is at Post Mile (PM) 54.03 and Location 2 is at PM R56.61. The beginning of the Project is located at latitude 38.58124° and longitude -120.25385° and the end location of the Project is located at latitude 38.60000° and longitude -120.22258°.

APPLICATION FEE RECEIVED:

\$2,985.00 was received on 1 November 2024. The fee amount was determined as required by California Code of Regulations, title 23, sections 3833(b)(3) and 2200(a)(3) and was calculated as category E - Low Impact Discharges (fee code 87) with the dredge and fill fee calculator.

MITIGATION AND MINIMIZATION MEASURES:

- Using filter bags and screens with 5mm or smaller mesh on all potential dewatering pumps/pipes/hoses to protect water quality and other biological resources;
- Utilizing non-photo degradable geosynthetic materials for gravel bags in the potential water diversion facility;
- Storing all equipment and chemicals outside of all waterways/drainages; any equipment required to be inside a waterway/drainage for the potential water diversion facility will be placed on plastic and bermed to contain leaks/spills;
- All equipment maintenance and fueling will be completed at least 100 ft away from all waterways/drainages above bermed plastic or spill trays;
- Inspecting equipment daily for leakage;
- Restoring all areas to pre-existing conditions and stabilizing all slopes;
- Preventing any erosion/sedimentation using silt fencing, fiber rolls, siltation fabric, straw bales, etc.;
- Performing water quality monitoring, sampling, and reporting;
- Keeping a spill kit and extra water diversion system BMP materials onsite at all times;
- Restricting vegetation trimming and tree removal the minimal amount necessary;
- Revegetate areas utilizing a native hydroseed mix;

- Performing pre-construction surveys for migratory birds (including raptors) no more than 14 days prior to the start of construction if construction activities occur between February 1 and September 30. If active nests are found, protective buffers will be implemented according to the California Department of Fish and Wildlife guidelines until it has been determined that the young have fledged.

TERMINATION OF COVERAGE:

Upon completion of the Project, you shall submit a complete Notice of Termination (NOT) requesting to be un-enrolled under Order No. 2004-0004-DWQ. Attachment 2 to the Order contains the NOT form.

If you have questions concerning this matter, please contact Olivia Ilsley by phone at (916) 464-4673 or by email at Olivia.Ilsley@waterboards.ca.gov.

Original Signed by Anne Walters for:
Patrick Pulupa
Executive Officer

Enclosure: State Water Resources Control Board Water Quality Order No.
2004-0004-DWQ

Attachments: Figures 1 and 2

cc: Distribution List [via email only]:

Christopher Link
United States Army Corps of Engineers
Sacramento District Office
Regulatory Division
SPKRegulatoryMailbox@usace.army.mil

Mary Xiong
Department of Fish and Wildlife,
Region 2
mary.xiong@wildlife.ca.gov

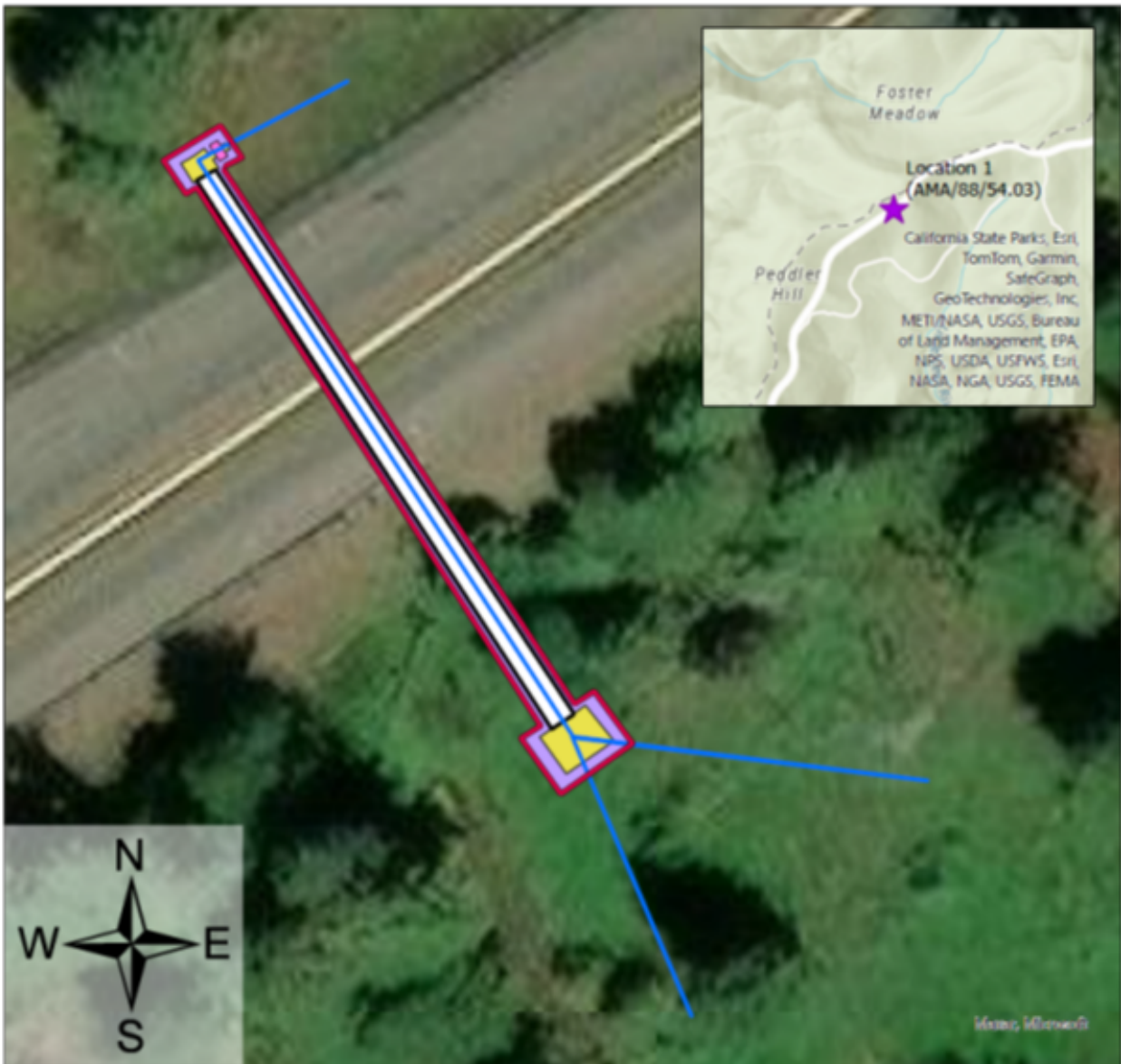
United States Environmental Protection
Agency
R9CWA401@epa.gov

CWA Section 401 WQC Program
State Water Resources Control Board
Stateboard401@waterboards.ca.gov

Bethany Woo
California Department of
Transportation, D10
Bethany.Woo@dot.ca.gov

Elizabeth Hummel
California Department of
Transportation, D10
Elizabeth.Hummel@dot.ca.gov

Figure 1: Impact Map Location 1



1L490 Culvert Replacement Project

Location 1:

Amador County, Route 88, Post Mile 54.03

Coordinates: (38.581250, -120.253836)

Total Permanent Impacts to WOTS & CDFW Riverine = 0.002 acres

Total Temporary Impacts to WOTS & CDFW Riverine = 0.0034 acres

Total Temporary Impacts to CDFW Riparian = 0.0034 acres

*Impact acreage is not to scale on the diagram.

Created July 25, 2024

Caltrans Biologist Bethany Woo

0 10 20 40 60 Feet









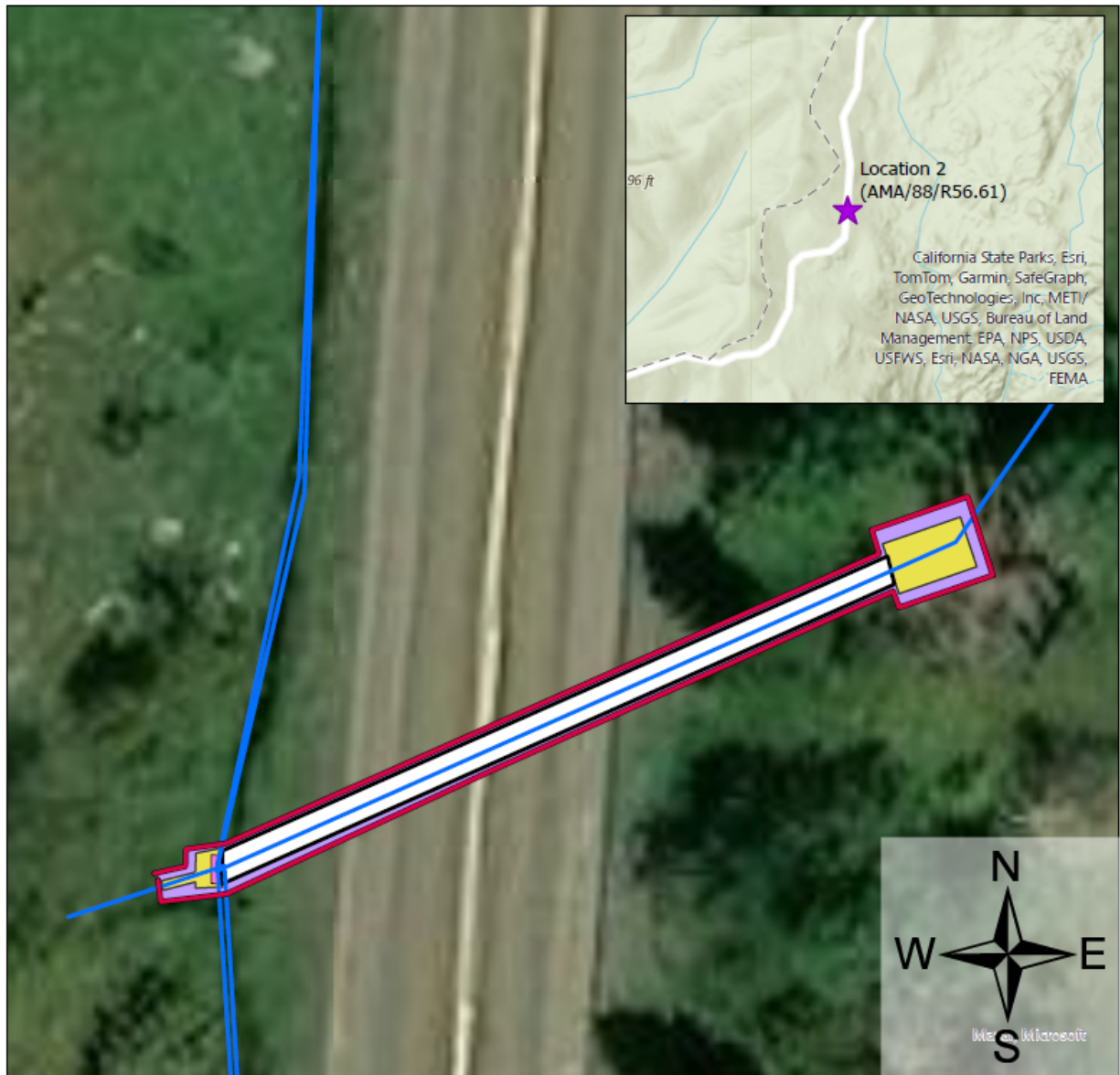
-  Project Limits
-  Water Flowline
-  Permanent Impacts (WOTS & CDFW)
-  Culvert
-  Temporary Impacts (WOTS & CDFW)
-  Temporary Impacts (CDFW)

Figure 2: Impact Map Location 2

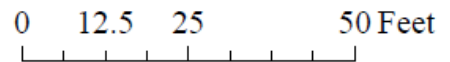



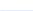




1L490 Culvert Replacement Project

Location 2:
Amador County, Route 88, Post Mile R56.61
Coordinates: (38.599999, -120.222694)

Total Permanent Impacts to WOTS & CDFW Riverine = 0.0023 acres
Total Temporary Impacts to WOTS & CDFW Riverine = 0.0034 acres
Total Permanent Impacts to CDFW Riparian = 0.0002 acres
Total Temporary Impacts to CDFW Riparian = 0.0055 acres
*Impact acreage is not to scale on the diagram.

Created July 25, 2024
Caltrans Biologist Bethany Woo



-  Project Limits
-  Water Flowline
-  Permanent Impacts (WOTS & CDFW)
-  Culvert
-  Temporary Impacts (WOTS & CDFW)
-  Temporary Impacts (CDFW)