

CALIFORNIA REGIONAL WATER QUALITY CONTROL BOARD
SANTA ANA REGION

3737 Main Street, Suite 500
Riverside, CA 92501-3348
(951) 782-4130

[Santa Ana Water Board Website](https://www.waterboards.ca.gov/santaana) (<https://www.waterboards.ca.gov/santaana>)

**WASTE DISCHARGE REQUIREMENTS ORDER R8- 2025-
0011**

ORDER INFORMATION--

Status: ADOPTED
Program: Dredged or Fill Material Program
Discharger(s): Adkan Engineers
Project: Green Tree Project
County: Riverside County
CIWQS WDID: 332024-14
Prior Order(s): (none)

CERTIFICATION

I, JAYNE JOY, Executive Officer, hereby certify that the following is a full, true, and correct copy of the order adopted by the California Regional Water Quality Control Board, Santa Ana Region, on February 14, 2025.

JAYNE JOY
Executive Officer

TABLE OF CONTENTS

Findings **1**

 Project Description and Discharge Characteristics 2

 Regulatory Considerations..... 5

 CEQA and Public Participation 6

Requirements **7**

 A. Discharge Specifications 7

 B. Discharge Prohibitions..... 8

 C. Mitigation Requirements 9

 D. Provisions 10

Attachment A—MAPS **14**

Attachment B—REPORTS and NOTIFICATIONS **18**

Attachment C—SIGNATORY REQUIREMENTS **26**

CALIFORNIA REGIONAL WATER QUALITY CONTROL BOARD
SANTA ANA BASIN REGION

ORDER R8-2025-0011

WASTE DISCHARGE REQUIREMENTS
FOR
DISCHARGES OF DREDGED OR FILL MATERIALS TO WATERS OF THE STATE
GREEN TREE PROJECT
RIVERSIDE COUNTY

FINDINGS

The Santa Ana Regional Water Quality Control Board (Santa Ana Water Board) hereby finds as follows:

1. This Order prescribes Waste Discharge Requirements (WDRs) for the Green Tree Project (Project) of Adkan Engineers (Discharger).
2. Receiving waters and groundwater potentially impacted by this Project are protected in accordance with the operative Water Quality Control Plan for the Santa Ana River Basin (Basin Plan) and all other pertinent plans and policies. The Basin Plan includes water quality standards, which consist of existing and potential beneficial uses of waters of the State, water quality objectives to protect those uses, and the state and federal antidegradation policies.
3. The Santa Ana Water Board has the authority to regulate the discharge of dredged and fill materials by prescribing WDRs pursuant to California Water Code section 13263. The Santa Ana Water Board has determined that WDRs are necessary to adequately address the Project's potential impacts on the beneficial uses of waters of the State.
4. This Order regulates the discharge of fill material to waters of the State.
5. This Order is issued in compliance with the State Water Resources Control Board's (State Water Board) *State Policy for Water Quality Control: State Wetland Definition and Procedures for Discharges of Dredged or Fill Material to Waters of the State* (Dredge and Fill Procedures), as revised on April 6, 2021.
6. On July 11, 2024, on behalf of the Discharger, Glenn Lukos Associates, Inc. submitted an *Application for Discharges of Dredged or Fill Material to Waters of the State* (Application) for the Project, which was assigned Santa Ana Water Board WDID No. 332024-14.
7. The Application was deemed complete on August 13, 2024.

8. On October 16, 2024, the U.S. Army Corps of Engineers issued an Approved Jurisdictional Determination, which determined that waters of the United States were not present within the Project boundaries.

Project Description and Discharge Characteristics

9. The Project's purpose is to construct a residential community of 163 single-family homes and associated infrastructure on an approximately 95-acre Project site in unincorporated Riverside County. The Project also includes the construction of two offsite road crossings to provide access to the residential community and an emergency ingress/egress access road.
10. Additionally, the Project amenities will include a 2.14-acre park site and approximately 0.83-mile of public trails.
11. The Project also includes three stormwater detention basins. These basins will treat onsite stormwater runoff by suspending solids for 24 hours and anticipated pollutants, such as pesticides and fertilizers, while stormwater flows filtrate through a sand media type filter before discharging to the pre-existing drainage courses along the Project perimeter.
12. The first of the two proposed offsite road crossings will connect the offsite Street A, which is the Project's main point of connection to El Sobrante Road (north-to-south direction). At this crossing, Street A will be 44 feet wide from curb face to curb face, with a total right-of-way of 66 feet, resulting in a total width of 110 feet.
13. The crossing for Street A will result in impacts to an unnamed drainage located within the southwestern portion of the Project site ("Drainage B"). The offsite Street A crossing will include a headwall at the upstream end collecting surface flows from the east side of the drainage course into a 72-inch reinforced concrete pipe culvert. This pipe culvert will be approximately 198 linear feet long and will discharge surface flows downstream through a headwall to a rip-rap pad designed to dissipate velocity at the downstream end of the drainage course on the west side of the road. This culvert crossing has been sized to handle an anticipated flow of approximately 633 cubic feet per second (cfs) during a typical 100-year storm event.
14. The second offsite road crossing will be located on the north side of the Project site, providing emergency ingress and egress to the existing Travertine Avenue. This crossing will result in impacts to the unnamed drainage ("Drainage A"). The crossing at "Drainage A" will allow for emergency access from the proposed Project to Travertine Drive at the north end of the Project site, as required by the Riverside County Fire Department.

15. During a 100-year storm event, this culvert crossing is expected to receive approximately 303 cfs from the upstream east side of the culvert. Surface flows from the road will be collected through an inlet headwall and into a 72-inch reinforced concrete pipe culvert, which will extend for approximately 158 linear feet. The pipe culvert will outlet downstream of "Drainage A," on the west side of the culvert over an energy-dissipating rip-rap pad. The emergency access road includes 24 feet of pavement and a multipurpose access trail.
16. The Project has been designed to partially avoid and minimize impacts to the drainage courses along the northern, eastern, and western boundaries, as well as a portion of the southern Project boundary.
17. This Project is located in unincorporated Riverside County and encompasses a total of 98.59 acres (Latitude 33.866089° N, Longitude -117.429064° W). APN's 270-070-005, 270-070-006, 270-070-007, 270-160-005; Offsite: 270-160-020, 270-160-021, 270-160-018. Maps showing the Project location are found in Attachment A of this Order.
18. A total of 0.56 acres of ephemeral waters of the State are present on the Project site and offsite areas identified as "Drainage A," "Tributary A-1," "Tributary A-2," and "Drainage B." These watercourses are described in further detail below.
19. "Drainage A" originates as an ephemeral drainage in the eastern portion of the Project site and extends northwesterly. Downstream where the drainage course becomes vertically incised, there is a perennial seep. Its upper and middle reaches are dry with sections of the feature incised down to bedrock. The upper reaches are disturbed with patches of tree tobacco, Mexican fan palm, desert brittlebush, castor bean, Peruvian pepper, four-wing saltbush, blue elderberry, California buckwheat, black mustard, and various bromes. In the mid and downstream reaches support black willow, arroyo willow, stinging nettle, mulefat, yerba mansa, Canary palm, and perennial pepperweed.
20. "Tributary A-1" and "Tributary A-2" only contain surface flows in direct response to precipitation. Both features extend northerly/northwesterly direction and are tributaries to "Drainage A." "Tributary A-1" meanders in a northward along the western Project boundary, with approximately 254 linear feet occurring within the Project site; the tributary is highly disturbed with tree tobacco, California sagebrush, desert brittlebush, castor bean, Russian thistle, four-wing saltbush, California buckwheat, black mustard, and various bromes.
21. "Drainage B" conveys intermittent flows from the neighboring citrus operations in the southeast. It is interspersed by perennial seeps that occur where the drainage course becomes vertically incised to a depth where groundwater is perched. It runs along the southwestern and southern boundaries of the Project site, extending in a general west/northwest direction and eventually merging with

- “Drainage A.” The watercourse supports areas of vegetated riparian habitat adjacent to the channel banks. The downstream reaches are moderately disturbed with stands of tree tobacco, California juniper, Mexican fan palm, desert brittlebush, castor bean, Peruvian pepper, four-wing saltbush, California buckwheat, and black mustard. Associated riparian species include mulefat, blue elderberry, black willow and arroyo willow. Additional species include stinging nettle, yerba mansa, Mexican fan palm, and Canary palm.
22. Project construction will result in the permanent physical loss of 0.285 acre of ephemeral streambed of waters of the State within “Drainage A,” “Drainage B,” and “Tributary A-2.” The permanent impacts are a result of mass grading to construct residential development, road crossings, stormwater basins, and associated infrastructure.
 23. Additionally, the Project will result in temporary impacts of 0.006 impacts of waters of the State due to the filling of slopes to safely key into the toe of the slope and backfill which is necessary for slope stability for road in “Drainage A,” “Drainage B,” and “Tributary A-2.” These areas will be restored to their original topography.
 24. The Project will impact three unnamed drainages tributaries to Gage Canal which is a distributary to the Santa Ana River. Gage Canal has the following designated beneficial uses (existing or potential): Agriculture, Groundwater Recharge, Water Contact Recreation, Non-contact Water Recreation, Warm Freshwater Habitat, Wildlife Habitat, Rare, Threatened, or Endangered Species, Spawning, Reproduction, and Development.
 25. The Discharger proposes to provide compensatory mitigation for permanent impacts to waters of the State through permittee-responsible compensatory mitigation consisting of 2.43 acres (8.5:1 mitigation-to-impact ratio) of establishment, enhancement, and rehabilitation of “Drainage A,” “Drainage B,” and “Tributary A-2.”
 26. Additionally, the compensatory mitigation will include the on-site establishment of 1.30 acres of mulefat scrub in “Drainage A” and “Drainage B,” reestablishment of 0.41 acres of Goodding’s willow riparian woodland in “Drainage B,” and enhancement of 0.76 acres of Goodding’s willow riparian woodland in “Drainage A” and 0.07 acre of mulefat scrub in “Drainage B.”

Regulatory Considerations

1. This Order is adopted pursuant to Water Code section 13263, subdivision (a), which provides that the Santa Ana Water Board may, after any necessary hearing, prescribe requirements (WDRs) as to the nature of any proposed discharge with relation to the conditions existing in the disposal area or receiving waters upon, or into which, the discharge is made or proposed. The WDRs are required to implement any relevant water quality control plans that have been adopted and take into consideration the beneficial uses to be protected, the water quality objectives reasonably required for that purpose, other waste discharges, the need to prevent nuisance, and the provisions of Water Code section 13241.
2. This Order is also adopted pursuant to Water Code section 13267, subdivision (b)(1) which authorizes the Santa Ana Water Board to require technical and monitoring program reports, submitted under penalty of perjury, from persons discharging or proposing to discharge waste within the Santa Ana Region, in connection with the issuance of WDRs. This Order incorporates requirements for water quality monitoring and Project reporting, which are necessary to ensure that the discharge of dredged and fill material complies with WDRs and is protective of the water quality. In accordance with Water Code section 13267, the burden, including costs, of generating these reports bears a reasonable relationship to the need for the report and the benefits to be obtained from them.
3. The Santa Ana Water Board has considered the federal and state antidegradation policies (State Water Board Resolution 68-16 and 40 C.F.R § 131.12) and finds that the discharge permitted under this Order is consistent with those policies. Filling wetlands, riparian areas, headwaters, and other waters causes partial or complete loss of the beneficial uses provided by those waters. This Order requires that impacts to waters of the state be mitigated through avoidance and minimization to the maximum extent practicable and that unavoidable loss of beneficial uses is offset with compensatory mitigation, including the restoration (reestablishment or rehabilitation), establishment (creation), enhancement, and/or preservation of other waters of the state. The mitigation requirements in this Order comply with the State Water Board's Dredge and Fill Procedures.
4. This Order is subject to modification or revocation upon administrative or judicial review, including review and amendment pursuant to Water Code section 13330 and California Code of Regulations, title 23, section 2050 et seq. Additionally, the Santa Ana Water Board reserves the right to suspend, cancel, or modify and reissue this Order, after providing notice to the Discharger, if the Santa Ana Water Board determines that the Project fails to comply with any of the conditions of this Order; or when necessary to implement any new or revised water quality

standards and implementation plans adopted or approved pursuant to the Porter-Cologne Water Quality Control Act (Wat. Code, § 13000 et seq.).

5. The provisions of this Order are severable and, if any provision of this Order or the application of any provisions of this Order to any circumstance is held invalid, the application of such provision to other circumstances and the remainder of this Order shall not be affected thereby.
6. A request for modification, revocation and re-issuance, or termination of this Order or a notification of planned changes or anticipated noncompliance does not stay any requirements of this Order.
7. The requirements prescribed herein do not authorize the commission of any act causing injury to the property of another, nor protect the Discharger from liabilities under federal, state, or local laws, nor guarantee the Discharger a capacity right in the receiving waters.
8. This Order does not convey any property rights of any sort, or any exclusive privilege. The ability to discharge waste is a privilege, not a right; nothing in this Order shall create a vested right to continue any discharges authorized herein, which are subject to rescission or modification. (Wat. Code, § 13263, subd. (g).)

CEQA and Public Participation

9. On February 07, 2023, the County of Riverside Planning Department, as the lead agency under the California Environmental Protection Act (CEQA; Public Resources Code, § 21000 et seq.) conducted an Initial Study and adopted a Mitigated Negative Declaration (MND) for the Project (State Clearinghouse 2024090718). The lead agency filed a Notice of Determination with the County of Riverside County Clerk on December 4, 2024.
10. The Santa Ana Water Board is a responsible agency under CEQA for the purposes of issuing this Order. As a responsible agency, the Santa Ana Water Board is “responsible for considering only the effects of those activities involved in a project which it is required by law to carry out or approve.” (Public Resources Code, § 21002.1, subd. (d).) In approving this Order, the Santa Ana Water Board has considered the MND adopted by County of Riverside Planning Department and subsequent information provided by the Discharger. More specifically, the Santa Ana Water Board considered those sections of the MND pertaining to impacts to water quality. The Santa Ana Water Board finds that compliance with the mitigation measures of the MND and conditions in this Order will reduce potentially adverse impacts to water quality to a less than significant level and protect beneficial uses of receiving waters.
11. The Santa Ana Water Board has notified the Discharger and other interested agencies and persons of its intent to prescribe WDRs for the discharge and has

provided them with an opportunity for public hearing to submit comments. There are no known tribal and/or disadvantaged communities in the vicinity of the Project site.

12. The Santa Ana Water Board, in a public meeting, heard and considered all comments pertaining to the WDRs for the discharge.

REQUIREMENTS

IT IS HEREBY ORDERED, pursuant to Water Code sections 13263 and 13267, that the Discharger shall comply with the following:

A. Discharge Specifications

1. No activities associated with the Project shall cause or threaten to cause a condition of nuisance, contamination or pollution as defined in Water Code section 13050.
2. The groundwater in the vicinity of the Project shall not be degraded resulting from Project activities or placement of fill materials for the Project.
3. The Discharger shall, as applicable, obtain coverage under and comply with the State Water Board's NPDES *General Permit for Storm Water Discharges Associated with Construction and Land Disturbance Activities* (Order 2022-0057-DWQ, NPDES No. CAS000002) and any subsequent amendments (Construction General Permit). If the Project construction activities do not require coverage under the Construction General Permit, the Discharger shall develop and implement a runoff management plan or equivalent construction best management practices (BMP) plan, to prevent the discharge of sediment and other pollutants during construction activities.
4. The Discharger shall prepare a Stormwater Pollution Prevention Plan (SWPPP) and specify the best management practices (BMPs) to minimize pollutants in storm water runoff, as well as non-storm water discharges during construction activities.
5. The Water Quality Management Plan (WQMP) identifies permanent and operational source control BMPs, as well as Project design features and BMPs for post-development Project operation.
6. The Discharger shall comply with the local regulations associated with the Santa Ana Water Board's Municipal Stormwater Permit issued Riverside County and co-permittees under NPDES No. CAS618033 and WDRs Order R8-2010-0033, and subsequent iterations thereof.

7. If construction dewatering discharges, including temporary stream diversions, are necessary to carry out the Project, the Discharger shall enroll and comply with the Santa Ana Water Board Order R8-2020-0006, General Waste Discharge Requirements for Discharges to Surface Waters that Pose an Insignificant (De Minimis) Threat to Water Quality.
8. Discharges of fill materials shall be limited to the placement of native fill and "inert waste", as defined in California Code of Regulations, title 27, section 20230.
9. Construction and post-construction best management practices (BMPs) shall be implemented.

B. Discharge Prohibitions

1. Permanent impacts to waters of the state from the Project shall not exceed quantities identified in Finding 22.
2. Except as expressly authorized in another WDRs order, waste shall not be discharged in a manner or location other than as described in the Application referenced in Finding 17 and elsewhere in the findings.
3. Except for authorized fill material discharges to waters of the state, the direct discharge of wastes, including rubbish, refuse, bark, sawdust, or any other solid or liquid wastes, into water channels, surface waters, or any place where they would contact or be eventually transported to surface waters, including flood plains, is prohibited.
4. The discharge of oil or other floating materials from any activity in quantities sufficient to cause deleterious bottom deposits, turbidity, or discoloration in surface waters is prohibited.
5. The discharge of silt, sand, clay, or other earthen materials from any activity in quantities sufficient to cause deleterious bottom deposits, turbidity, or discoloration in surface waters is prohibited.
6. Discharges to surface waters of wastes or pollutants that are not authorized by this Order or regulated by a separate permit are prohibited.
7. During the grading and filling operation, there shall be no onsite fueling, lubrication, changing of oil or other equipment fluids and their filters, or any other maintenance or storage of construction equipment within or next to drainage areas or other surface runoff conveyances.

C. Mitigation Requirements

1. The Discharger shall provide compensatory mitigation at a ratio of 8.5:1 for the authorized permanent impacts to 0.286 acres of waters of the State through a combination of establishment, enhancement, and rehabilitation associated with "Drainage A," "Tributary A-2" and "Drainage B."
2. The compensatory mitigation shall include"
 - a. Onsite establishment of 1.30 acres of mulefat scrub in "Drainage A" and "Drainage B";
 - b. Reestablishment of 0.41 acres of Goodding's willow riparian woodland in "Drainage B"; and
 - c. Enhancement of 0.76 acres of Goodding's willow riparian woodland in "Drainage A" and 0.07 acre of mulefat scrub in "Drainage B."
3. The Discharger has submitted a draft compensatory mitigation plan as part of the Application. The Discharger shall provide a final compensatory mitigation plan for review and approval by the Santa Ana Water Board. The final compensatory mitigation plan shall include all plan elements as outlined in the Dredge and Fill Procedures, Subpart J – Compensatory Mitigation for Losses of Aquatic Resources. Impacts to waters of the state are not authorized and shall not occur until a compensatory mitigation plan has been approved. Upon approval by the Santa Ana Water Board, the Discharger shall implement the approved plan.
4. The Discharger shall provide a final compensatory mitigation plan for review and approval by the Santa Ana Water Board. The final compensatory mitigation plan shall include all plan elements as outlined in the Dredge and Fill Procedures, Subpart J – Compensatory Mitigation for Losses of Aquatic Resources. The impacts to waters of the state are not authorized and shall not occur until a compensatory mitigation plan has been approved. Upon approval by the Santa Ana Water Board, the Discharger shall implement the approved compensatory mitigation plan.
5. The Permittee-Responsible compensatory mitigation shall be implemented concurrent with the grading activities activity causing the authorized impacts to waters of the State.
6. The Discharger is responsible for the permittee-responsible compensatory mitigation in perpetuity. However, the Discharger may transfer the compensatory mitigation requirements associated with long-term management when the following conditions have been met:

- a. Performance standards are met.
- b. A transfer agreement to a third party has been approved by the Santa Ana Water Board.
 - i. A transfer agreement shall be submitted from an authorized representative of the third party (transferee) for acceptance by the Santa Ana Water Board. This agreement shall demonstrate acceptance and understanding of the responsibility to comply with and fully satisfy the required compensatory mitigation and long-term management conditions. Failure to comply with the mitigation conditions and associated requirements may subject the transferee to enforcement by the Santa Ana Water Board under Water Code section 13385, subdivision (a).
 - ii. Notification of transfer of responsibilities meeting the above condition must be provided to the Santa Ana Water Board. A draft transfer agreement is due to the Santa Ana Water Board no less than 30 days prior to the transfer of the mitigation responsibility. A final transfer agreement is due to the Santa Ana Water Board within 30 days of the completion of the transfer.
- c. An endowment fund has been provided by the Discharger to the third party for management in perpetuity of the mitigation site.
- d. A conservation easement, deed restriction, or other appropriate restrictive covenant for the mitigation site has been recorded and approved by the Santa Ana Water Board.

D. Provisions

1. The Discharger shall maintain a copy of this Order at the Project site so that it is always available to site operating personnel. Key operating personnel shall be familiar with the Order's content.
2. The Discharger shall take all reasonable steps to minimize or prevent any discharge that has a reasonable likelihood of adversely affecting human health and the environment.
3. This Order is not transferable to any person without written approval by the Santa Ana Water Board's Executive Officer. Prior to any change in ownership, the Discharger shall notify the Executive Officer in writing at least 30 days in advance. The notice shall include a written transfer agreement between the existing owner and the new owner. At a minimum, the transfer agreement shall contain a specific date for transfer of responsibility for compliance with this Order and an acknowledgment that the new owner or

- operator is liable for compliance with this Order from the date of transfer. The Santa Ana Water Board may require modification or revocation and reissuance of this Order to change the name of the Discharger and incorporate other requirements as may be necessary under the Water Code.
4. The reporting period is from January 1st to December 31st. The Discharger shall submit an annual report each year no later than January 31st for the previous reporting period if the Order's effective date is at least 90 days within the reporting period. Annual reporting shall continue until a *Notice of Project Complete Letter* is issued to the Permittee. The contents of the annual report shall include a construction summary, Project status and schedule (including ground disturbance, site clearing and grubbing, and site construction), and the implementation status of BMPs during the active discharge period. If the Project has not started, the Discharger shall provide an estimated start date and reasons for any expected delays.
 5. The Discharger shall submit a *Commencement of Construction Report* at least seven days prior to start of initial ground-breaking activities.
 6. The Discharger shall submit a *Request for Notice of Completion of Discharges Letter* following completion of active Project construction activities, including any required restoration and Discharger-responsible mitigation. This request shall be submitted to Santa Ana Water Board staff within 30 days following the completion of all Project construction activities. Upon acceptance of the request, Santa Ana Water Board staff will issue to the Discharger a *Notice of Completion of Discharges Letter*, which will end the active discharge period and, if appropriate, associated annual fees.
 7. The Discharger shall submit a *Request for Notice of Project Complete Letter* when construction and any required post-construction monitoring is complete and no further Project activities will occur. This request shall be submitted to Santa Ana Water Board staff within 30 days following the completion of all Project activities. Upon approval of the request, Santa Ana Water Board staff will issue to the Discharger a *Notice of Project Complete Letter* and prepare a draft order terminating this Order for approval by the Santa Ana Water Board. The *Notice of Project Complete Letter* will end the post-discharge monitoring period, and either the expiration or Board approval of the termination of this Order will end the associated annual fees.
 8. The Discharger shall retain records of all monitoring information, including all calibration and maintenance records, copies of all reports required by this Order, and records of all data used to complete the application for this Order. Records shall be maintained for a minimum of five years from the date of the sample, measurement, report, or application. Records may be maintained electronically. This period may be extended during for any unresolved

- enforcement action or litigation regarding this discharge or when requested by the Santa Ana Water Board.
9. The Discharger shall report any noncompliance that may endanger human health or the environment. Information shall be provided orally to the Santa Ana Water Board office and the Office of Emergency Services within twenty-four (24) hours of when the Discharger becomes aware of the incident. If noncompliance occurs outside of business hours, the Discharger shall leave a message on the Santa Ana Water Board's office voicemail. A written report shall also be provided within five business days of the time when the Discharger becomes aware of the incident. The written report shall contain a description of the noncompliance and its cause, the period of noncompliance, the anticipated time to achieve full compliance, and the steps taken or planned to reduce, eliminate, and prevent recurrence of the noncompliance. All other forms of noncompliance shall be reported with the Discharger's next scheduled Monitoring Report, or earlier if requested by the Executive Officer.
 10. Before initiating a new discharge or making a material change in the character, location, or volume of an existing discharge, the Discharger shall report all pertinent information in writing to the Santa Ana Water Board, and if required by the Santa Ana Water Board, obtain revised requirements before any modifications are implemented.
 11. The Discharger shall allow the Santa Ana Water Board, or an authorized representative, upon presentation of credentials and other documents as may be required by law to:
 - a. Enter premises where a regulated facility or activity is located or conducted, or where records are kept under the requirements of this Order;
 - b. Access and copy any records that are kept under the requirements of this Order;
 - c. Inspect any facility, equipment (including monitoring and control equipment), practices, or operations regulated or required under this Order; and
 - d. Photograph, sample, or monitor for the purpose of assuring compliance with this Order or as otherwise authorized by the Water Code.
 12. This Order becomes effective on the date of adoption by the Santa Ana Water Board.
 13. This Order will remain valid for five years from the date of its adoption. The Discharger shall file a new dredge and fill application in accordance

with California Code of Regulations, title 23, division 3, chapter 9 no later than 180 days in advance of this expiration date. The application, with filing fee, will be discussed between the Discharger and Santa Ana Water Board staff regarding any need for additional information and changes in fees prior to the issuance of new WDRs.

LIST OF ATTACHMENTS

Attachment A—MAPS
Attachment B—REPORTS and NOTIFICATIONS
Attachment C—SIGNATORY REQUIREMENTS

ENFORCEMENT

The Santa Ana Water Board reserves the right to take any enforcement action authorized by law. Accordingly, failure to timely comply with any provisions of this Order may subject the Discharger to enforcement action. Such actions include, but are not limited to, the assessment of administrative civil liability pursuant to Water Code sections 13323, 13268, and 13350, a Time Schedule Order (TSO) issued pursuant to Water Code sections 13300 and 13308, or referral to the California Attorney General for recovery of judicial civil liability.

ADMINISTRATIVE REVIEW

Any person aggrieved by this Santa Ana Water Board action may petition the State Water Board for review in accordance with Water Code section 13320 and California Code of Regulations, title 23, section 2050 et seq. To be timely, the petition must be received by the State Water Board by 5:00 pm on the 30th day after the date of this Order; if the 30th day falls on a Saturday, Sunday or state holiday, the petition must be received by the State Water Board by 5:00 pm on the next business day. The law and regulations applicable to filing petitions are available on the [State Water Board website](http://www.waterboards.ca.gov/public_notices/petitions/water_quality) (http://www.waterboards.ca.gov/public_notices/petitions/water_quality). Copies will also be provided upon request.

ATTACHMENT A—MAPS

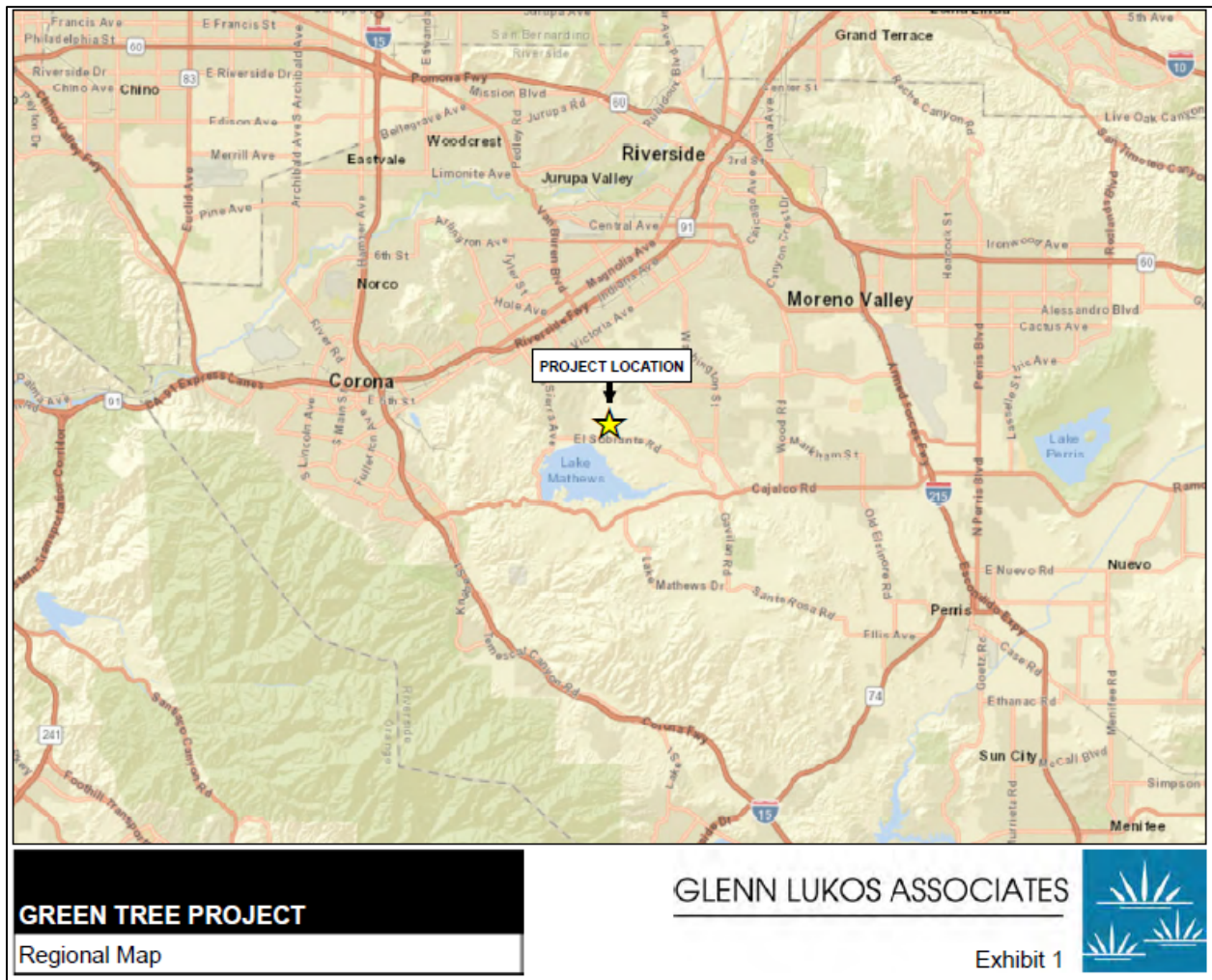


Figure 1: Regional Map

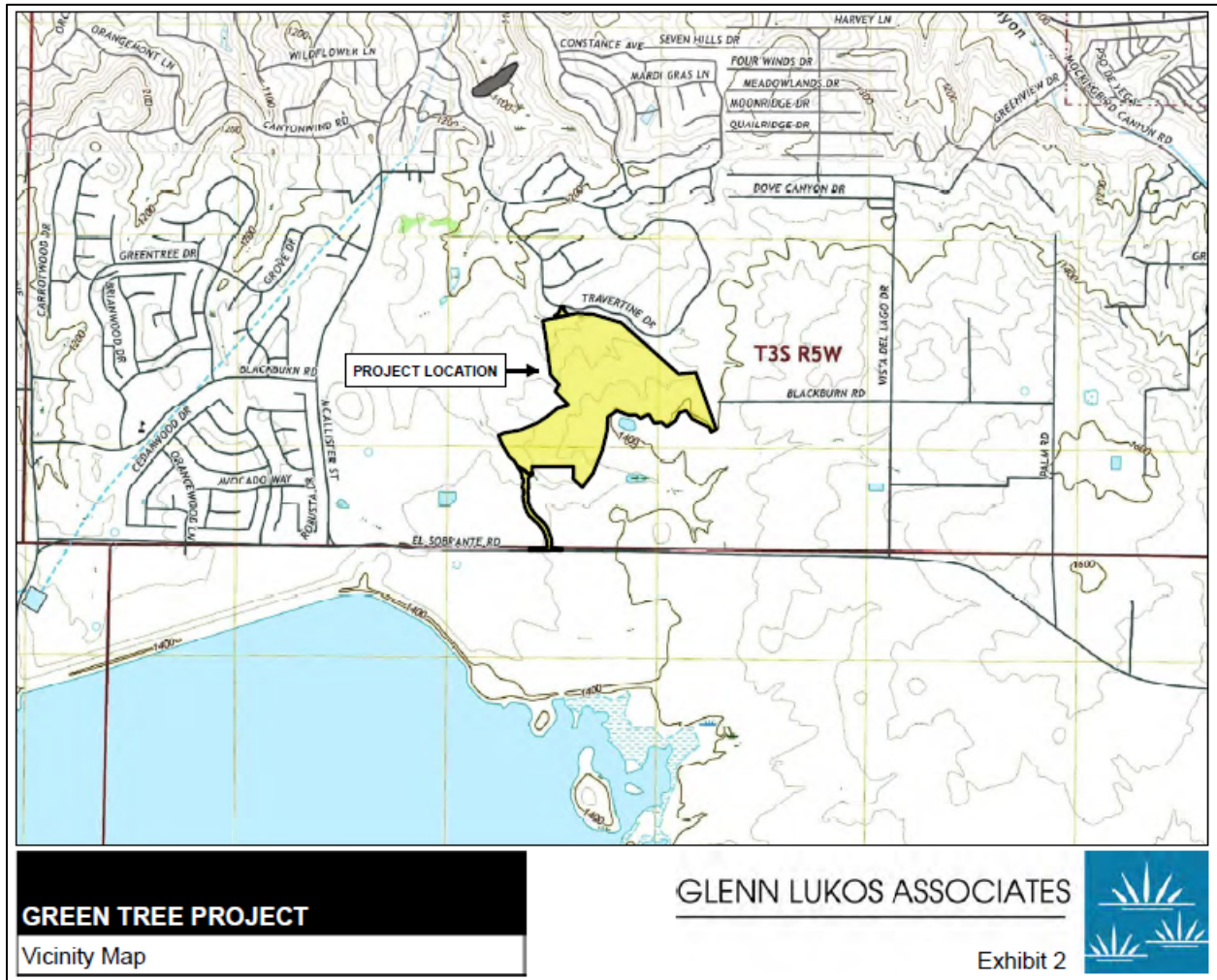


Figure 2: Vicinity Map

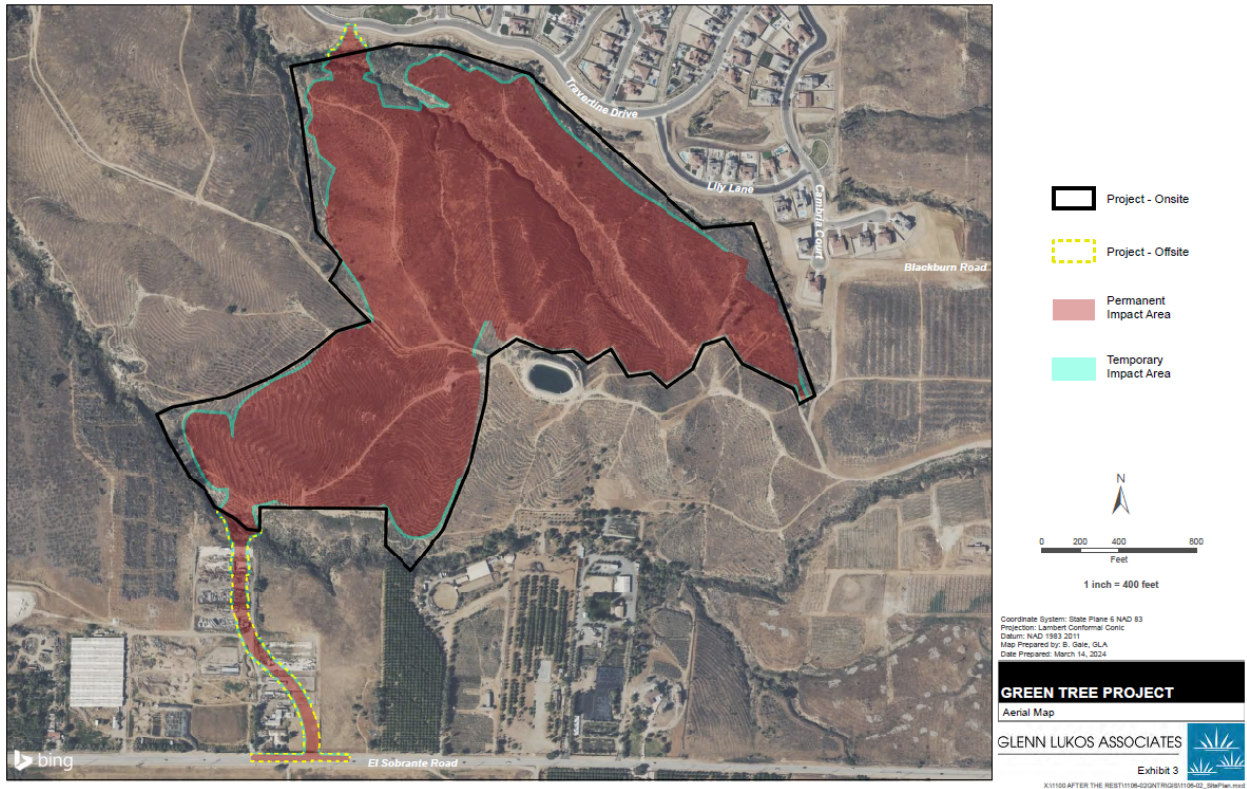


Figure 3: Aerial Map

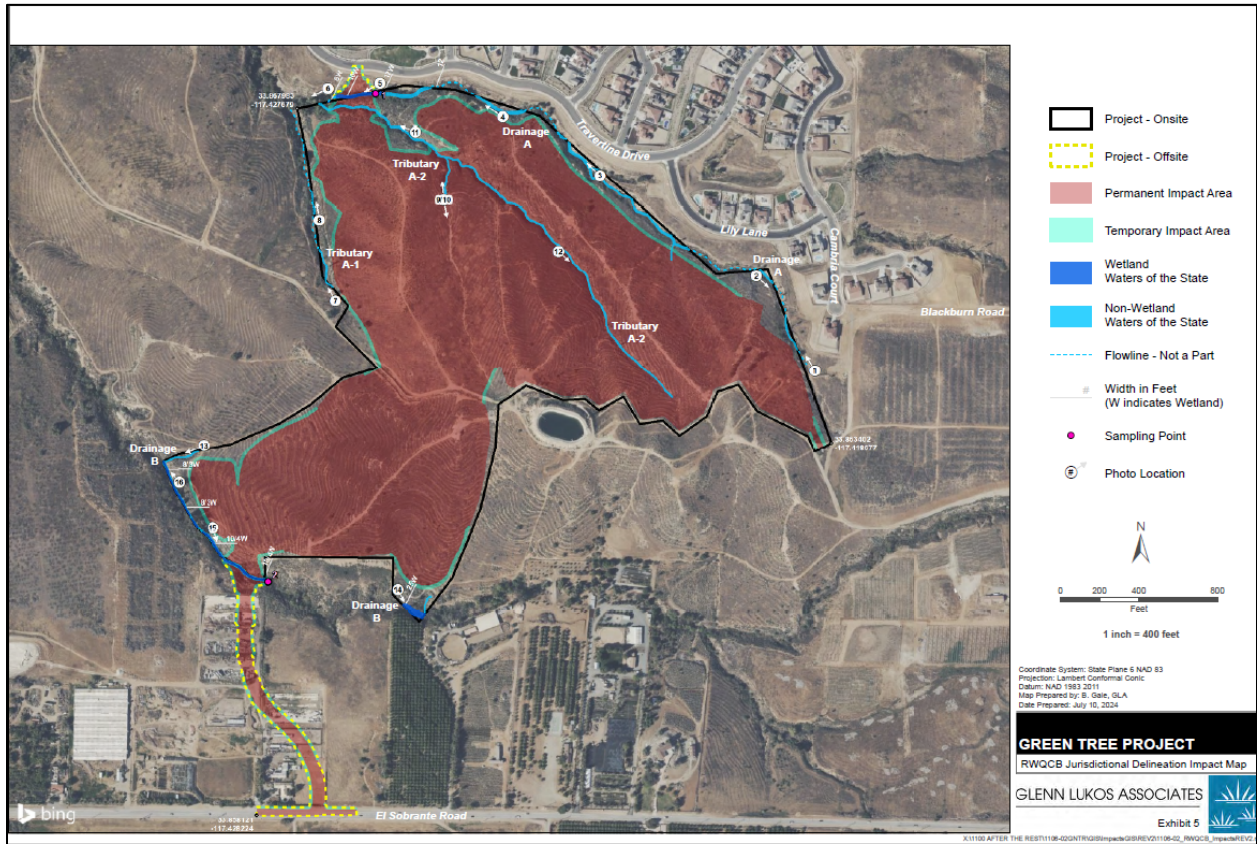


Figure 4: Jurisdictional Delineation Impact Map

ATTACHMENT B—REPORTS AND NOTIFICATIONS

Copies of this Form

To identify your Project, it is necessary to include a copy of the Project-specific Report and Notification Cover Sheet below with your report (see below). Please retain a copy for your records.

Report Submittal Instructions

- 1) Check the box on the *Report and Notification Cover Sheet* next to the report or notification you are submitting.
 - a) Part A (Annual Report): Submitted annually from the anniversary of the Project effective date until a *Notice of Project Complete Letter* is issued.
 - b) Part B (Project Status Notifications): Used to notify the Santa Ana Water Board of the status of the Project schedule that may affect Project billing.
- 2) Sign the *Report and Notification Cover Sheet* and attach all information requested for the Report Type.
- 3) Electronic Report Submittal Instructions:
 - a) Submit signed *Report and Notification Cover Sheet* and required information via email to: RB8-401Reporting@waterboards.ca.gov
 - b) Include in the subject line of the email: Order R8-2025-0011 and Report Type Name
 - c) Additionally, electronically submit Annual Reports using the State Water Board's California Integrated Water Quality System (CIWQS) Program website [California Integrated Water Quality System Project \(CIWQS\) | California State Water Resources Control Board](#). The CIWQS website will provide additional information for report submittal in the event there will be a planned service interruption for electronic submittal.

ATTACHMENT B—REPORTS AND NOTIFICATIONS

Definition of Reporting Terms

- 1) **Active Discharge Period:** The active discharge period begins with the effective date of this Order and ends on the date that the Discharger receives a *Notice of Completion of Discharges Letter* or, if no post-construction monitoring is required, a *Notice of Project Complete Letter*. The Active Discharge Period includes all elements of the Project, including site construction and restoration, and any Discharger-responsible compensatory mitigation construction.
- 2) **Request for Notice of Completion of Discharges Letter:** This request by the Discharger to the Santa Ana Water Board staff pertains to projects that have post construction monitoring requirements (e.g., if site restoration were required to be monitored for five (5) years following construction). Santa Ana Water Board staff will review the request and send a *Completion of Discharges Letter* to the Discharger upon approval. This letter will initiate the post-discharge monitoring period and a change in fees from the annual active discharge fee to the annual post-discharge monitoring fee.
- 3) **Request for Notice of Project Complete Letter:** This request by the Discharger to the Santa Ana Water Board staff pertains to projects that either have completed post-construction monitoring and achieved performance standards, or have no post-construction monitoring requirements and no further Project activities are planned. Santa Ana Water Board staff will review the request and send a *Project Complete Letter* to the Discharger upon approval. Termination of annual invoicing of fees will correspond with the expiration or termination by Board action of this Order.

Map/Photo Documentation Information

When submitting maps or photos, please use the following formats.

1. Map Format Information:

Preferred map formats of at least 1:24000 (1" = 2000') detail (listed in order of preference):

- **GIS shapefiles:** The shapefiles shall depict the boundaries of all Project areas and extent of aquatic resources impacted. Each shape should be attributed with the extent/type of aquatic resources impacted. Features and boundaries should be accurate to within 33 feet (10 meters). Identify datum/projection used and, if possible, provide map with a North American Datum of 1983 (NAD83) in the California Teale Albers projection in feet.
- **Google KML files** saved from Google Maps: My Maps or Google Earth Pro. Maps shall show the boundaries of all Project areas and extent/type of aquatic resources impacted. Include URL(s) of maps. If this format is used, include a

ATTACHMENT B—REPORTS AND NOTIFICATIONS

Map/Photo Documentation Information

spreadsheet with the object ID and attributed with the extent/type of aquatic resources impacted.

- **Other electronic format** (CAD or illustration format) that provides a context for location (inclusion of landmarks, known structures, geographic coordinates, or USGS DRG or DOQQ). Maps shall show the boundaries of all Project areas and extent/type of aquatic resources impacted. If this format is used, include a spreadsheet with the object ID and attributed with the extent/type of aquatic resources impacted.
- Aquatic resource maps marked on paper **USGS 7.5-minute topographic maps** or **Digital Orthophoto Quarter Quads (DOQQ)** printouts. Maps shall show the boundaries of all Project areas and extent/type of aquatic resources impacted. If this format is used, include a spreadsheet with the object ID and attributed with the extent/type of aquatic resources impacted.

2. **Photo-Documentation:** Include a unique identifier, date stamp, written description of photo details, and latitude/longitude (in decimal degrees) or map indicating location of photo. Successive photos should be taken from the same vantage point to compare pre/post-construction conditions.

ATTACHMENT B—REPORTS AND NOTIFICATIONS

Report and Notification Cover Sheet
Project: Green Tree Project
Discharger: Adkan Engineers
Order No.: R8-2025-0011
Order Effective Date: February 14, 2025

Report Type Submitted
<input type="checkbox"/> Report Type 1: Annual Report
<input type="checkbox"/> Report Type 2: Commencement of Construction Report
<input type="checkbox"/> Report Type 3: Request for Notice of Completion Discharges Letter
<input type="checkbox"/> Report Type 4: Request for Notice of Project Complete Letter
<input type="checkbox"/> Report Type 5: Transfer of Property Ownership Report

“I certify under penalty of law that I have personally examined and am familiar with the information submitted in this document and all attachments and that, based on my inquiry of those individuals immediately responsible for obtaining the information, I believe that the information is true, accurate, and complete. I am aware that there are significant penalties for submitting false information, including the possibility of fine and imprisonment.”

STATEMENT OF AUTHORIZATION (include if authorization has changed since application was submitted)

I hereby authorize _____ to act in my behalf as my representative in the submittal of this report, and to furnish upon request supplemental information in support of this submittal.

ATTACHMENT B—REPORTS AND NOTIFICATIONS

Report Type 1	Annual Report
Purpose:	Notify the Santa Ana Water Board staff of Project status during both the active discharge and post-discharge monitoring periods.
When to Submit:	The reporting period is from January 1 st to December 31 st . The Discharger shall submit an annual report each year no later than January 31 st for the previous reporting period if the Order's effective date is at least 90 days within the reporting period. Annual reporting shall continue until a Notice of Project Complete Letter is issued to the Permittee.
Report Contents:	<p>Part A:</p> <ol style="list-style-type: none"> 1. Project progress and schedule, including initial ground disturbance, site clearing and grubbing, road construction, site construction, and the implementation status of construction storm water BMPs. If construction has not started, provide estimated start date and reasons for delay. <p>Part B:</p> <ol style="list-style-type: none"> 1. Planned date of initiation of compensatory mitigation site installation. 2. If installation is in progress, a map of what has been completed to date. 3. If the compensatory mitigation site has been installed, provide a final map and information concerning attainment of performance standards contained in the compensatory mitigation plan. 4. For Mitigation Bank or In-Lieu Fee (ILF) mitigation, status or proof of purchase of credit types and quantities. 5. Include the name of bank/ILF Program and contact information.

ATTACHMENT B—REPORTS AND NOTIFICATIONS

Report Type 2	Commencement of Construction
Purpose:	Notify the Santa Ana Water Board staff prior to the start of construction.
When to Submit:	Must be received at least seven (7) days to start of initial ground disturbance activities.
Report Contents:	<ol style="list-style-type: none">1. Date of commencement of construction.2. Anticipated date when discharges to waters of the state will occur.3. Project schedule milestones, including a schedule for onsite compensatory mitigation, if applicable.

Report Type 3	Request for Notice of Completion of Discharge Letter
Purpose:	Notify Santa Ana Water Board staff that post-construction monitoring is required and that active Project construction, including any mitigation and Discharger-responsible compensatory mitigation, is complete.
When to Submit:	Must be received by Santa Ana Water Board staff within thirty (30) days following completion of all Project activities.
Report Contents:	<ol style="list-style-type: none">1. Status of storm water Notice of Termination(s), if applicable.2. Status of post-construction storm water BMP installation.3. Pre- and post-photo documentation of all Project activity sites where the discharge of dredge and/or fill/excavation was authorized.4. Summary of deviation discharge quantities compared to initial authorized impacts to waters of the state, if applicable.5. An updated monitoring schedule for mitigation for temporary impacts to waters of the state and Discharger-responsible compensatory mitigation during the post-discharge monitoring period, if applicable.

ATTACHMENT B—REPORTS AND NOTIFICATIONS

Report Type 4	Request for Notice of Project Complete Letter
Purpose:	Notify Santa Ana Water Board staff that construction and/or any post-construction monitoring is complete, or is not required, and no further Project activity is planned.
When to Submit:	Must be received by Santa Ana Water Board staff within thirty (30) days following completion of all Project activities.
Report Contents:	<p>Part A: Mitigation for Temporary Impacts (if applicable)</p> <ol style="list-style-type: none"> 1. A report establishing that the performance standards outlined in the restoration plan have been met for Project site upland areas of temporary disturbance that could result in a discharge to waters of the state. 2. A report establishing that the performance standards outlined in the restoration plan have been met for restored areas of temporary impacts to waters of the state. Pre- and post-photo documentation of all restoration sites. <p>Part B: Discharger-Responsible Compensatory Mitigation (if applicable)</p> <ol style="list-style-type: none"> 1. A report establishing that the performance standards outlined in the compensatory mitigation plan have been met. 2. Status on the implementation of the long-term maintenance and management plan and funding of endowment. 3. Pre- and post-photo documentation of all compensatory mitigation sites. 4. Final maps of all compensatory mitigation areas (including buffers).

ATTACHMENT B—REPORTS AND NOTIFICATIONS

Report Type 5	Transfer of Property Ownership
Purpose:	Notify Santa Ana Water staff of change in ownership of the Project or Discharger-responsible mitigation area.
When to Submit:	At least 30 working days prior to the transfer of ownership.
Report Contents:	<ol style="list-style-type: none">1. A statement that the Discharger has provided the purchaser with a copy of this Order and that the purchaser understands and accepts:<ul style="list-style-type: none">• the Order’s requirements and the obligation to implement them or be subject to administrative and/or civil liability for failure to do so; and• responsibility for compliance with any long-term BMP maintenance plan requirements in this Order.2. A statement that the Discharger has informed the purchaser to submit a written request to the Santa Ana Water Board to be named as the Discharger in a revised order.

ATTACHMENT C—SIGNATORY REQUIREMENTS

All Documents Submitted in Compliance With this Order Shall Meet the Following Signatory Requirements

1. All applications, reports, or information submitted to the Santa Ana Water Board shall be signed and certified as follows:
 - a. For a corporation, by a responsible corporate officer of at least the level of vice-president.
 - b. For a partnership or sole proprietorship, by a general partner or proprietor, respectively.
 - c. For a municipality, or a State, federal, or other public agency, by either a principal executive officer or ranking elected official.
2. A duly authorized representative of a person designated in items 1.a through 1.c above may sign documents if:
 - a. The authorization is made in writing by a person described in items 1.a through 1.c above.
 - b. The authorization specifies either an individual or position having responsibility for the overall operation of the regulated activity.
 - c. The written authorization is submitted to the Santa Ana Water Board staff contact prior to submitting any documents listed in item 1 above.
3. Any person signing a document under this section shall make the following certification:

“I certify under penalty of law that I have personally examined and am familiar with the information submitted in this document and all attachments and that with the information submitted in this document and all attachments and that, based on my inquiry of those individuals immediately responsible for obtaining the information, I believe that the information is true, accurate, and complete. I am aware that there are significant penalties for submitting false information, including the possibility of fine and imprisonment.”