

W orkshop
San D iego Bay Contam inated
M arine Sedim ents

M ichael M artin , Ph.D .
California Departm ent of Fish & Gam e
June 18 , 2002

Introduction

v **California Department of
Fish and Game Perspective
& Involvement**

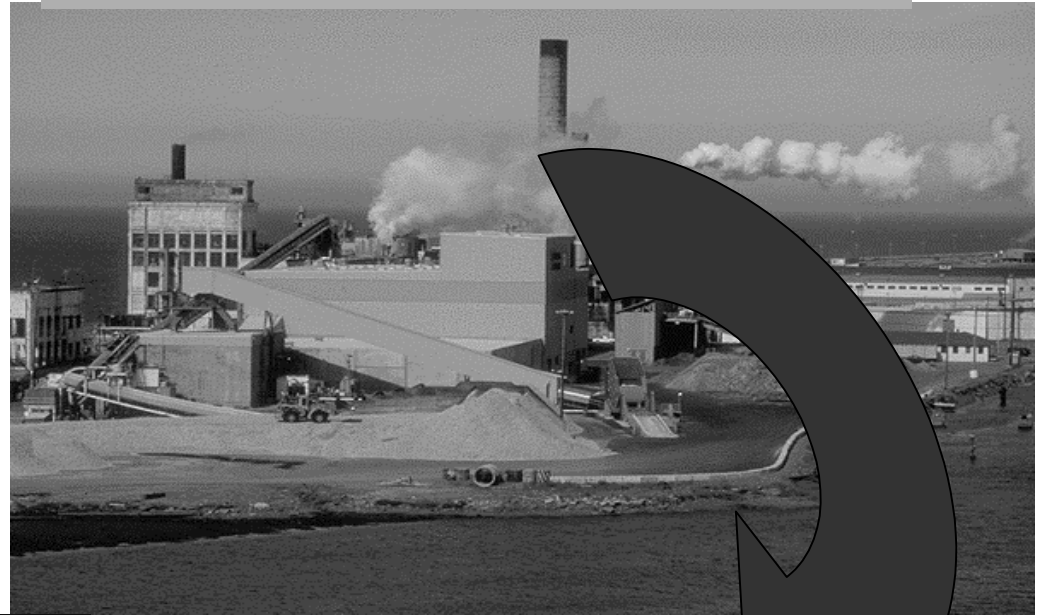


v **Risk Assessment &
Restoration Specialists**



RISK ASSESSMENT PROCESS

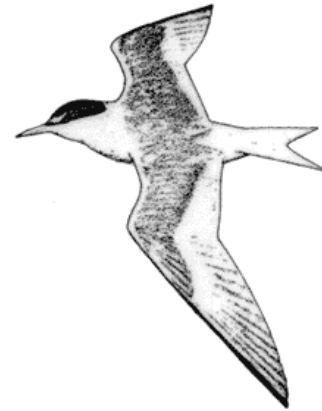
ASSESS RISK



**MANAGE RISK
BY REMEDIATION**

Natural Resource Trustees

- v Who are we?
- v What are the trust natural resources?
- v Trustees responsibilities?



Natural Resource Trustees

- v Federal Agencies – e.g. NOAA & USFWS
- v Designated State Agencies – e.g. DFG & SWRCB
- v Coordination & Consultation
 - v Adequacy of Ecological Studies/Receptors at Risk
 - v Technical Assistance with Chemistry and Toxicology
 - v Identify Remedial Actions that Protect and Restore Natural Resources



Sediment Remediation Process

Trustees Goal: Selection of Remedial Action which protect and restore Resources

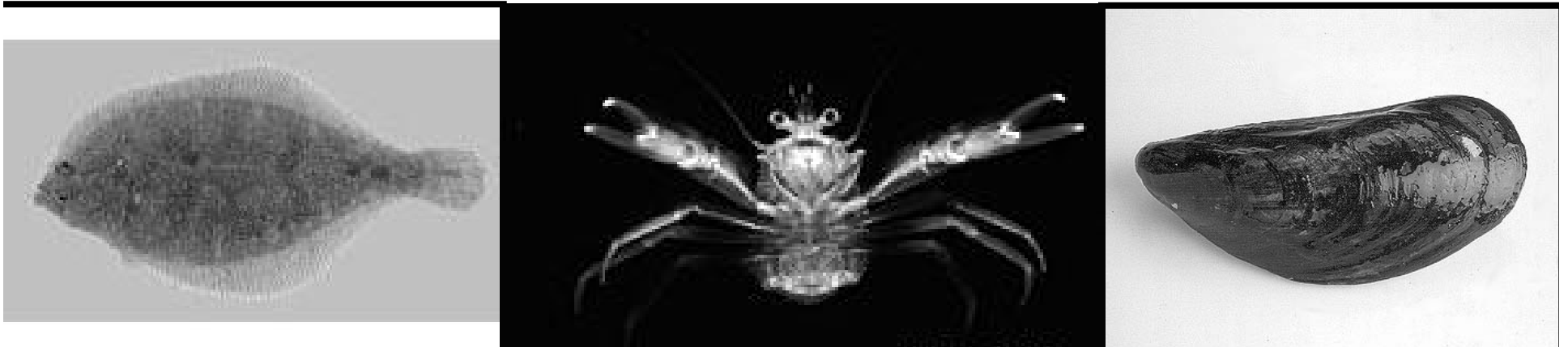
- v **Notify and Coordinate** on Affected Resources
- v **Consult** on Ecological Assessment
- v **Consult** on Recommendations for Cleanup Feasibility
- v **Comply** with Regulations and Laws, administered by Trustee agencies (Compliance with ARARs)

Staff Evaluation Approach

Aquatic Life Use

"Triad" or "Multiple Lines of Evidence" Approach

- v Chemical Analysis and Screening
- v Toxicity Testing
- v Benthic Community Condition



Staff Evaluation Approach

Wildlife Use

Modeling - Biota Sediment Bioaccumulation
(BSAF)

Comparison to Toxicity Reference Values



Shipyard Sediment Cleanup

- v Consultation on Risk Evaluation
- v Review of Current Studies & Literature
- v Consensus Based Approach with Natural Resource Trustees



Coordination and Consultation

- v **Process Is Working**
- v **Resolution** by
Consensus & Issue
Specific
- v Process Is **Consistent**
on a State-wide Basis
- v Excellent **Progress**



Summary of Position

- v RW QCB **Staff Addressing** Natural Resource Issues
- v "Resolution of Issue" **Process** Working
- v **More Evaluation** & Analyses of Data Needed
- v Confident that Staff is "Going the **Right Way**"

Future Events & Course

- v Staff **Continue Evaluation** and Consultation Process for Ecological Assessment
- v Trustee Agencies are **Encouraged** with Information and Data Collected
- v Believe that Ecological Assessment is Scientifically and Technically **Well Founded**
- v Agencies **Will Continue** to Provide Consultation and Review

