

**CALIFORNIA REGIONAL WATER QUALITY CONTROL BOARD
SAN FRANCISCO BAY REGION**

TENTATIVE ORDER

**RESCISSION OF WASTE DISCHARGE REQUIREMENTS ORDER NO. 95-190
FOR:**

**UNITED TECHNOLOGIES CORPORATION
PRATT & WHITNEY ROCKETDYNE SAN JOSE**

for the property located at
**600 METCALF ROAD
SANTA CLARA COUNTY**

The California Regional Water Quality Control Board, San Francisco Bay Region (hereinafter the Water Board) finds that:

1. United Technologies Corporation, Pratt & Whitney Rocketdyne San Jose (UTC), hereinafter also referred to as the discharger, operated a solid rocket motor research and manufacturing facility at the subject site south of San Jose. The 5,113-acre facility operated from 1959 until manufacturing was discontinued in 2003. The facility is being closed under a decommissioning, decontamination, and demolition (“D3”) program. Environmental conditions at the site are also being restored through extensive soil and groundwater remediation efforts.
2. On September 14, 1995, the Water Board adopted Waste Discharge Requirements (WDR) Order No. 95-190. This WDR Order regulated waste discharges from:
 - a) the Waste Water Treatment Facility (WWTP), also known as Station 2100;
 - b) septic leach fields at Stations 0080, 0460, 0530, 0560 and 0570;
 - c) sewage tanks at Stations 1319 and 1372;
 - d) a potable water treatment plant (Station 2215) into Pond 2215;
 - e) treated effluent from onsite groundwater treatment plants; and
 - f) thermal treatment of solid rocket motor propellant and energetic materials at the former Open Burning Facility.

The location of these stations is shown on Figure 1.

Closure of the Waste Water Treatment Plant

3. The WWTP was a secondary treatment plant located in Shingle Valley. When the UTC site was fully operational, the WWTP received sanitary sewage from onsite buildings and industrial discharges from boiler blowdown, cooling towers, compressor condensate, and heating/air conditioning condensate.
4. On March 12, 2008, UTC submitted a plan to permanently close the WWTP and its auxiliary components, including Ponds P1 through P4. On March 17, 2008, Water Board staff approved the WWTP closure plan.

5. On December 12, 2008, UTC notified Water Board staff that all toilets, showers, sinks, and industrial sources had been isolated from the sewers, the sewers flushed out, and the sewer lines physically disconnected from the WWTP. The WWTP, including its clarifier, digesters, and various sumps, has been completely decommissioned and demolished. There will be no further waste discharges to or from the WWTP.
6. The former WWTP location (Station 2100) has been graded to form a depression which, along with Ponds P1 through P4, will provide seasonal ponds to support threatened and endangered species (California Red-Legged Frogs and California Tiger Salamanders).
7. Water Board staff approved closure of the WWTP on January 21, 2010.

Closure of Septic Leach Fields

8. The septic leach fields near Stations 0080, 0460, 0530, 0560 and 0570 received domestic sewage from their respective buildings. These stations were demolished and formally closed in 2008 – 2009. No further wastes will be discharged to the leach fields associated with these stations.
9. The septic tanks at Stations 0080 and 0530 were pumped out, removed, and disposed offsite. The excavation pits were backfilled with clean soil. Both tank closures were performed under the regulatory oversight of the Santa Clara County Planning Office. The septic tank at Station 0460 has been pumped out and will be decommissioned when the Station 0460 slab is demolished. Septic tanks reported to have been present near Stations 0560 and 0570 were not found despite efforts to locate the tanks during demolition and closure of these stations.

Closure of Sewage Tanks

10. Sewage tanks at Stations 1319 and 1372 received domestic and industrial wastewater. Both stations and their respective sewage tanks were demolished in 2008. These tanks were formally closed under the regulatory oversight of the Santa Clara County Planning Office. There will be no further waste discharge to these tanks.

Closure of Waste Water Treatment Pond 2215

11. Pond 2215 was a shallow earthen pond that received zeolite backwash water from the onsite potable water treatment plant (Station 2215). On January 20, 2008, UTC sent a letter to the Water Board summarizing closure of the pond. Samples collected from pond sediments indicated the presence of various chemicals at low concentrations. Arsenic was the only chemical present at concentrations that exceeded the Water Board's Environmental Screening Levels (ESLs) for shallow soils under a residential re-use scenario. However, the arsenic concentrations in pond sediments and in soils beneath the former pond were in the same range as natural background levels.

12. Water Board staff approved closure of Pond 2215 on February 14, 2008. There will be no further waste discharge to the pond.

Discharges of Treated Groundwater

13. Groundwater under various portions of the site is contaminated with elevated concentrations of volatile organic compounds and perchlorate. Site groundwater is extracted, treated to remove the contaminants, discharged to specified ponds, and reused onsite for irrigation and dust control.
14. Discharge of treated groundwater was addressed in WDR Order No. 95-190; however, discharges from the groundwater treatment plants are now covered under the Water Reclamation Specifications contained within Site Cleanup Requirements (SCR) Order No. R2-2004-0032, which was adopted by the Water Board on May 19, 2004. Therefore, there is no longer a need to regulate treated groundwater discharges under WDR Order No. 95-190.

Discharges of Thermal Treatment Wastes

15. The Open Burning Facility (OBF) was formerly used for thermal destruction of waste solid rocket propellant and other energetic materials. The OBF has not been used since 1996. Final closure of the OBF by the Department of Toxic Substances Control is pending.
16. There has been no discharge of wastes at the OBF since 1996 and no further wastes will be discharged. Therefore, there is no longer a need to regulate discharges at the OBF under WDR Order No. 95-190.

Summary

17. Waste discharges at the WWTP, septic leach fields, sewage tanks, Pond 2215, and the OBF, which were formerly regulated under WDR Order No. 95-190, have permanently ceased and the majority of these facilities no longer exist. Discharge of treated effluent from the groundwater treatment plants is ongoing, but has been regulated since 2004 under SCR Order No. R2-2004-0032.
18. Thus, WDR Order No. 95-190 is no longer necessary and should be rescinded.

CEQA, NOTIFICATION, AND PUBLIC HEARING

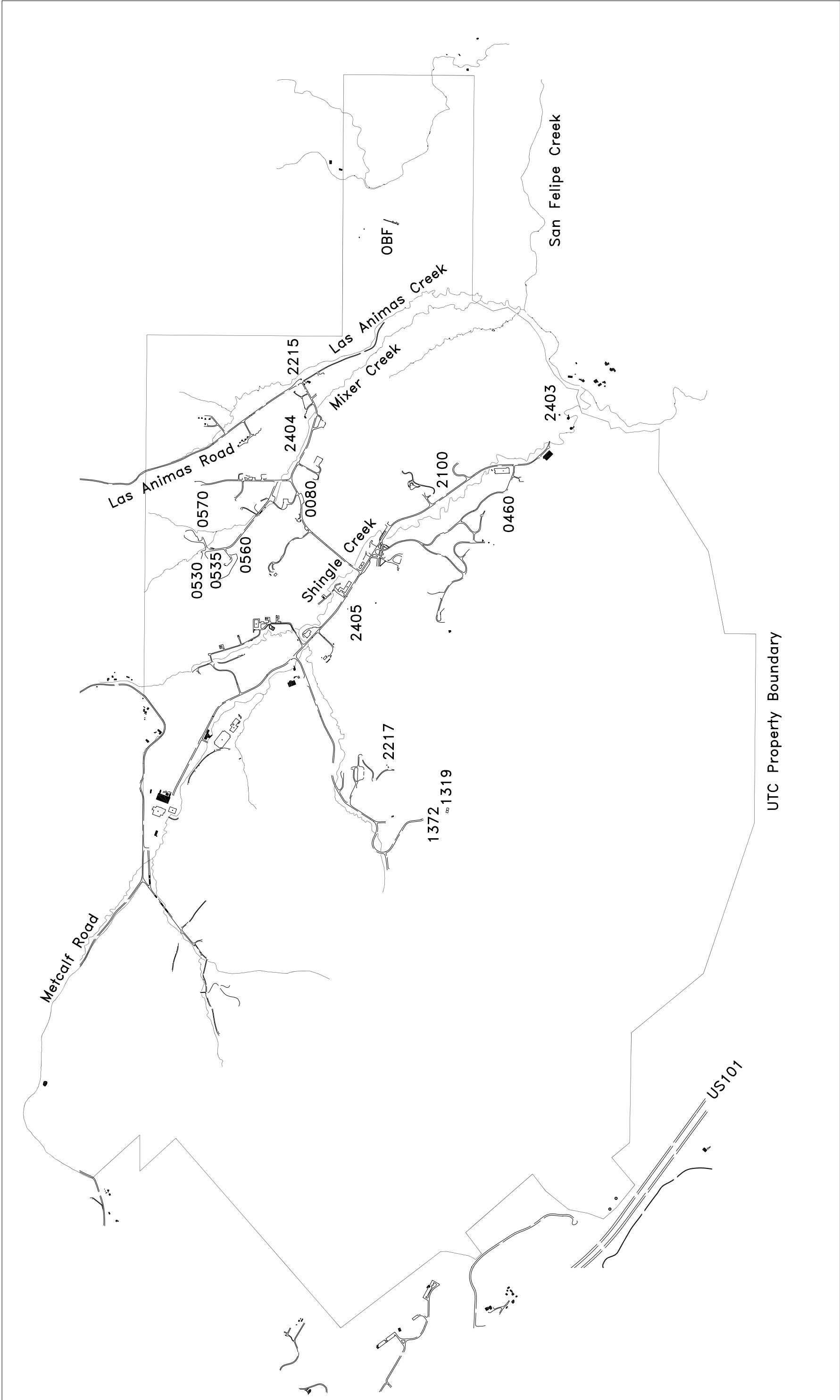
19. The rescission of waste discharge requirements is exempt from the provisions of Chapter 3 (commencing with Section 2100 of Division 13) of the Public Resources Code California Environmental Quality Act (CEQA) pursuant to 14 CCR 15263 and Section 13389 of the California Water Code.
20. The Water Board has notified the discharger, interested agencies, and persons of its intent to rescind waste discharge requirements in WDR Order No. 95-190, and has provided them with an opportunity for a public hearing and an opportunity to submit their written views and recommendations.

21. The Water Board, in a public meeting, heard and considered all comments pertaining to the rescission of waste discharge requirements for the above discharges.

IT IS HEREBY ORDERED that WDR Order No. 95-190 is rescinded.

I, Bruce H. Wolfe, Executive Officer, do hereby certify the foregoing is a full, true and correct copy of an Order adopted by the California Regional Water Quality Control Board, San Francisco Region on _____, 2010.

Bruce H. Wolfe
Executive Officer



Map of PWR-San Jose Facility
WDR 95-190 Facilities

Waste Water Treatment Plant 2100; Leachfields 0080, 0460, 0530, 0560 and 0570; Sewage Tanks 1319 and 1372;
Water Treatment Plant 2215 and Pond 2215; Groundwater Treatment Systems 0535, 2403, 2404 and 2405; OBF

