

CALIFORNIA REGIONAL WATER QUALITY CONTROL BOARD  
SANTA ANA REGION

3737 Main Street, Suite 500  
Riverside, CA 92501-3348  
(951) 782-4130

[Regional Board Website](https://www.waterboards.ca.gov/santaana) (<https://www.waterboards.ca.gov/santaana>)

---

**WASTE DISCHARGE REQUIREMENTS ORDER**  
**R8-2024-0064**

---

**ORDER INFORMATION**

**Status:** Adopted  
**Program:** Dredged or Fill Material Program  
**Discharger(s):** San Bernardino County Department of  
Public Works  
**Project:** Maple Lane Drainage Maintenance  
Project  
**County:** San Bernardino County  
**CIWQS WDID:** 362024-19  
**Prior Order(s):** (none)

**CERTIFICATION**

I, JAYNE JOY, Executive Officer, hereby certify that the following is a full, true, and correct copy of the order adopted by the California Regional Water Quality Control Board, Santa Ana Region, on October 25, 2024.

---

JAYNE JOY  
Executive Officer

**TABLE OF CONTENTS**

**Findings ..... 1**

    Introduction ..... 1

    Project Description and Discharge Characteristics ..... 2

    Regulatory Considerations..... 3

    CEQA and Public Participation ..... 4

**Requirements ..... 5**

    A. Discharge Specifications ..... 5

    B. Discharge Prohibitions..... 6

    C. Mitigation Requirements..... 7

    D. Provisions ..... 7

**Attachment A—MAPS ..... 11**

**Attachment B—REPORTS and NOTIFICATIONS ..... 14**

**Attachment C—SIGNATORY REQUIREMENTS ..... 21**

CALIFORNIA REGIONAL WATER QUALITY CONTROL BOARD  
SANTA ANA BASIN REGION

**ORDER R8-2024-0064**

WASTE DISCHARGE REQUIREMENTS  
FOR  
DISCHARGES OF DREDGED OR FILL MATERIALS TO WATERS OF THE STATE  
MAPLE LANE DRAINAGE MAINTENANCE PROJECT  
SAN BERNARDINO COUNTY

**FINDINGS**

The Santa Ana Regional Water Quality Control Board (Santa Ana Water Board) hereby finds as follows:

**Introduction**

1. This Order prescribes Waste Discharge Requirements (WDRs) for the Maple Lane Drainage Maintenance Project (Project) of the San Bernardino County Department of Public Works (Discharger).
2. Receiving waters and groundwater potentially impacted by this Project are protected in accordance with the operative Water Quality Control Plan for the Santa Ana River Basin (Basin Plan) and other plans and policies. The Basin Plan includes water quality standards, which consist of existing and potential beneficial uses of waters of the state, water quality objectives to protect those uses, and the state and federal antidegradation policies.
3. The Santa Ana Water Board has the authority to regulate the discharge of dredged and fill materials through the issuance of WDRs pursuant to Water Code section 13263. The Santa Ana Water Board has determined that WDRs are necessary to adequately address the Project's potential impacts on the beneficial uses of waters of the state.
4. This Order regulates the discharge of fill material to waters of the state.
5. This Order is issued in compliance with the State Water Resources Control Board's (State Water Board) *State Policy for Water Quality Control: State Wetland Definition and Procedures for Discharges of Dredged or Fill Material to Waters of the State* (Dredge and Fill Procedures), which was revised April 6, 2021.
6. On June 13, 2024, the Discharger submitted an Application for Discharges of Dredged or Fill Material to Waters of the State (Application) for the Project, which was assigned Santa Ana Water Board WDID No. 362024-19.

SAN BERNARDINO COUNTY DEPARTMENT OF PUBLIC WORKS  
MAPLE LANE DRAINAGE MAINTENANCE PROJECT

7. A fee of \$2,985.00 was received on June 11, 2024. The fee amount was determined as per California Code of Regulations, title 23 (Title 23), sections 3833(b)(3) and 2200(a)(3) and was calculated as A - Fill and Excavation Discharge (fee code 84) with the dredge and fill fee calculator. An additional fee of \$4,997.00 based on total Project impacts was received on August 16, 2024.
8. The Application was considered complete on July 11, 2024.

**Project Description and Discharge Characteristics**

9. The Project involves the routine maintenance of the Maple Lane Drainage to maintain capacity, reduce erosion potential, and protect nearby roadways. The maintenance activities will occur as needed for approximately 2-3 consecutive weeks, twice a year. The sediment removal or redistribution of sediment along Maple Lane Drainage will occur as necessary to maintain surface flow capacity. Additional maintenance events may be needed during storm season or after a single storm event.
10. The activities include as-needed maintenance and repair of basin and channel slopes, rock bottom control structures, other grouted and un-grouted rock features, cleaning of culvert inlets and outlets, sediment removal from the drainage and channel bottom, sediment redistribution, vegetation management, and ingress-egress grading and repairs. The total maintenance area includes the width of the channel ranging from approximately 15-20 feet in area and adjacent slopes, and the total maintained area length is approximately 1,600 linear feet.
11. Maintenance hand tool equipment will potentially include powered and non-powered saws, shovels, rakes, hoes, sickles, scythes, brush hooks, lopping shears, pruners, and sprayers. Maintenance mechanical tools will potentially include pick-up trucks, front-end loaders, dump trucks, water trucks, excavators, skid steers, bulldozers, motor graders, graders, speed loaders, and backhoes. The equipment will enter the channel through an existing rock splash pad at the northernmost limit of the Project site.
12. The Project is located within unincorporated Big Bear Lake in San Bernardino County and encompasses approximately 1.12 acres (Assessor Parcel Number 0312-421-43; Lat: 34°15'40.4", N, Long:-116°49'32.5"W). The Project site is bordered by a residential development to the north, east, and south, with Big Bear High School to the southwest and vacant land to the west. Maps showing the Project location are found in Attachment A of this Order.
13. A total of 1.12 acres of ephemeral waters of the state are present on the Project site. The Project maintenance activities will take place within the Maple Lane Drainage. The Maple Lane Drainage is an earthen bottom roadside drainage with existing portions of grouted and un-grouted rip-rap along the drainage bottom.

SAN BERNARDINO COUNTY DEPARTMENT OF PUBLIC WORKS  
MAPLE LANE DRAINAGE MAINTENANCE PROJECT

On-site vegetation consists of a mixture of mountain sage, Jeffrey pine forest and woodland, riparian, and ruderal vegetation. Maple Lane Drainage is mostly dry throughout the year with flows occurring during rain events and winter storms.

14. The implementation of the Project will result in the temporary impacts of 0.3 acre of ephemeral streambed. The temporary impacts to waters of the state are a result of various maintenance activities, repairs, and access. The routine maintenance will redistribute sediment, remove ruderal vegetation, and deploy equipment into the channel which will affect the overall water quality of the channel.
15. The Project will impact an ephemeral drainage tributary to Baldwin Lake. Baldwin Lake has the following designated beneficial uses (intermittent): Water Contact Recreation, Non-contact Water Recreation, Warm Freshwater Habitat, Cold Freshwater Habitat, Preservation of Biological Habitats of Special Significance, Wildlife Habitat, and Rare, Threatened, or Endangered Species.
16. No compensatory mitigation is required as all impacts are temporary in nature. The temporary impacts are associated with maintaining channel flow capacity, hydrology, and debris as well as stabilizing channel bottom and slopes.

### **Regulatory Considerations**

17. This Order is adopted pursuant to Water Code section 13263, subdivision (a), which provides that the Santa Ana Water Board may, after any necessary hearing, prescribe requirements (WDRs) as to the nature of any proposed discharge with relation to the conditions existing in the disposal area or receiving waters upon, or into which, the discharge is made or proposed. The WDRs must implement any relevant water quality control plans that have been adopted and take into consideration the beneficial uses to be protected, the water quality objectives reasonably required for that purpose, other waste discharges, the need to prevent nuisance, and the provisions of Water Code section 13241.
18. This Order is also adopted pursuant to Water Code section 13267, subdivision (b)(1) which authorizes the Santa Ana Water Board to require technical and monitoring program reports, submitted under penalty of perjury, from persons discharging or proposing to discharge waste within the Santa Ana Region, in connection with the issuance of WDRs. This Order incorporates requirements for water quality monitoring and Project reporting, which are necessary to ensure that the discharge of dredged and fill material complies with WDRs and is protective of the environment. In accordance with Water Code section 13267, the burden, including costs, of generating these reports bears a reasonable relationship to the need for the report and the benefits to be obtained from them.

SAN BERNARDINO COUNTY DEPARTMENT OF PUBLIC WORKS  
MAPLE LANE DRAINAGE MAINTENANCE PROJECT

19. The Santa Ana Water Board has considered the federal and state antidegradation policies (State Water Board Resolution No. 68-16 and 40 C.F.R § 131.12) and finds that the discharge permitted under this Order is consistent with those policies. Filling wetlands, riparian areas, headwaters, and other waters causes partial or complete loss of the beneficial uses provided by those waters. This Order requires that impacts to waters of the state be mitigated through avoidance and minimization to the maximum extent practicable and that unavoidable loss of beneficial uses is offset with compensatory mitigation, including the restoration (reestablishment or rehabilitation), establishment (creation), enhancement, and/or preservation of other waters of the state. The mitigation requirements in this Order comply with the State Water Board's Dredge and Fill Procedures.
20. The provisions of this Order are severable and, if any provision of this Order or the application of any provisions of this Order to any circumstance is held invalid, the application of such provision to other circumstances and the remainder of this Order shall not be affected thereby.
21. The filing of a request by the Discharger for modification, revocation and re-issuance, or termination of this Order or a notification of planned changes or anticipated noncompliance does not stay any requirements of this Order.
22. The requirements prescribed herein do not authorize the commission of any act causing injury to the property of another, nor protect the Discharger from liabilities under federal, state, or local laws, nor guarantee the Discharger a capacity right in the receiving waters.
23. This Order does not convey any property rights of any sort, or any exclusive privilege. The ability to discharge waste is a privilege, not a right; nothing in this Order shall create a vested right to continue any discharges authorized herein, which are subject to rescission or modification. (Wat. Code, § 13263, subd. (g).)

**CEQA and Public Participation**

24. On November 6, 2012, the County of San Bernardino, as the lead agency under the California Environmental Protection Act (CEQA; Public Resources Code, § 21000 et seq.) conducted an Initial Study and adopted a Mitigated Negative Declaration (MND) for the Maple Lane Drainage and Sidewalk Improvements Project. The Maple Lane Drainage and Sidewalk Improvements Project remediated erosion and alleviated nuisance flooding. The lead agency filed a Notice of Determination with the County of San Bernardino Clerk of the Board of Supervisors on November 7, 2012.

SAN BERNARDINO COUNTY DEPARTMENT OF PUBLIC WORKS  
MAPLE LANE DRAINAGE MAINTENANCE PROJECT

25. In April 2024, the San Bernardino County Department of Public works adopted an Addendum to the IS/MND prepared to incorporate routine maintenance activities for the Project.
26. The Santa Ana Water Board is a responsible agency under CEQA for the purposes of issuing this Order. As a responsible agency, the Santa Ana Water Board is “responsible for considering only the effects of those activities involved in a project which it is required by law to carry out or approve.” (Public Resources Code, § 21002.1, subd. (d).) In approving this Order, the Santa Ana Water Board has considered MND adopted by the County of San Bernardino and subsequent information provided by the Discharger. More specifically, the Santa Ana Water Board considered those sections of the MND pertaining to impacts to water quality. The Santa Ana Water Board finds that compliance with the mitigation measures of the MND and conditions in this Order will reduce potentially adverse impacts to water quality to a less than significant level and protect beneficial uses of receiving waters.
27. There are no known tribal and/or disadvantaged communities in the vicinity of the Project site.
28. The Santa Ana Water Board, in a public meeting, heard and considered all comments pertaining to the WDRs for the discharge.

## **REQUIREMENTS**

**IT IS HEREBY ORDERED**, pursuant to Water Code sections 13263 and 13267, that the Discharger shall comply with the following:

### **A. Discharge Specifications**

1. No activities associated with the Project shall cause or threaten to cause a condition of nuisance, contamination or pollution as defined in Water Code section 13050.
2. The groundwater in the vicinity of the Project shall not be degraded as a result of the Project activities or placement of fill material for the Project.
3. The Discharger shall comply with the local regulations associated with the Santa Ana Water Board's Municipal Stormwater Permit issued to San Bernardino County and co-permittees under NPDES No. CAS618036 and WDRs Order R8-2010-0036, and subsequent iterations thereof.
4. If construction dewatering discharges, including temporary stream diversions, are necessary to carry out the Project, the Discharger shall enroll and comply with Santa Ana Water Board Order R8-2020-0006,

SAN BERNARDINO COUNTY DEPARTMENT OF PUBLIC WORKS  
MAPLE LANE DRAINAGE MAINTENANCE PROJECT

*General Waste Discharge Requirements for Discharges to Surface Waters that Pose an Insignificant (De Minimis) Threat to Water Quality.*

5. The discharge of fill materials shall be limited to the placement of native fill and “inert waste”, as defined in California Code of Regulations, title 27, section 20230. The discharge of fill material other than native soil is prohibited.
6. The Project maintenance and repair activities shall be limited to in-kind repair or replacement. The Project shall not result in permanent impacts to channel and water resources.
7. Construction and post-construction BMPs including avoidance of channel work during the rainy season, avoidance of spills and leaks, removal of invasive plant species, appropriate equipment maintenance and staging shall be implemented.

**B. Discharge Prohibitions**

1. Permanent impacts to waters of the state from the Project shall not exceed quantities identified in Finding 14 of this Order.
2. The discharge of waste, in a manner or location other than as described in the Application or findings of this Order, or for which valid WDRs are not in force, is prohibited.
3. Except for authorized fill discharges to waters of the state, the direct discharge of wastes, including rubbish, refuse, bark, sawdust, or other solid or liquid wastes, into channels, surface waters, or any place where they would contact or be eventually transported to surface waters, including flood plains, is prohibited.
4. The discharge of oil or other floating materials from any activity in quantities sufficient to cause deleterious bottom deposits, turbidity, or discoloration in surface waters is prohibited.
5. The discharge of silt, sand, clay, or other earthen materials from any activity in quantities sufficient to cause deleterious bottom deposits, turbidity, or discoloration in surface waters is prohibited.
6. Discharges to surface waters of wastes or pollutants that are not authorized by this Order or regulated by a separate permit are prohibited.
7. During the grading and filling operation, there shall be no onsite fueling, lubrication, changing of oil or other equipment fluids and their filters, or



SAN BERNARDINO COUNTY DEPARTMENT OF PUBLIC WORKS  
MAPLE LANE DRAINAGE MAINTENANCE PROJECT

any other maintenance or storage of construction equipment within or next to drainage areas or other surface runoff conveyances.

**C. Mitigation Requirements**

1. The Discharger shall maintain areas of temporary disturbance to improve the overall water quality of the channel through maintaining channel flow capacity, hydrology, and debris as well as stabilizing channel bottom and slopes.

**D. Provisions**

1. The Discharger shall maintain a copy of this Order at the Project site so that it is always available to site operating personnel. Key operating personnel shall be familiar with the Order's content.
2. The Discharger shall take all reasonable steps to minimize or prevent any discharge that has a reasonable likelihood of adversely affecting human health or the environment.
3. This Order is not transferable to any person without written approval by the Santa Ana Water Board's Executive Officer. Prior to any change in ownership, the Discharger shall notify the Santa Ana Water Board's Executive Officer in writing at least 30 days in advance. The notice must include a written transfer agreement between the existing owner and the new owner. At a minimum, the transfer agreement must contain a specific date for transfer of responsibility for compliance with this Order and an acknowledgment that the new owner or operator is liable for compliance with this Order from the date of transfer. The Santa Ana Water Board may require modification or revocation and reissuance of this Order to change the name of the Discharger and incorporate other requirements as may be necessary under the Water Code.
4. The Discharger shall implement construction and post-construction BMPs as stated in the Discharger's *Proposed BMPs for the Maple Lane Drainage Routine Maintenance Project* document.
5. The Discharger shall submit a maintenance activity report prior to commencement of routine maintenance. The contents of the activity report shall include demonstration of need for maintenance, how the needed maintenance will be conducted.
6. The Discharger shall submit a post-maintenance activity report after conclusion of a routine maintenance event. The contents of the post-

SAN BERNARDINO COUNTY DEPARTMENT OF PUBLIC WORKS  
MAPLE LANE DRAINAGE MAINTENANCE PROJECT

maintenance activity report shall include the result of the maintenance activities.

7. The Discharger shall submit an annual report each year on the anniversary of this Order. Annual reporting shall continue until a *Notice of Project Complete Letter* is issued to the Discharger. The contents of the annual report shall include a construction summary, Project status and schedule (including ground disturbance, site clearing and grubbing, and site construction), and the implementation status of Best Management Practices during the active discharge period. If the Project has not started, the Discharger shall provide an estimated start date and reasons for delay.
8. The Discharger shall submit a *Commencement of Construction Report* at least seven days prior to start of initial ground disturbance activities.
9. The Discharger shall submit a *Request for Notice of Completion of Discharges Letter* following completion of active Project construction activities, including any required restoration and Discharger-responsible mitigation. This request shall be submitted to Santa Ana Water Board staff within 30 days following completion of all Project construction activities. Upon acceptance of the request, Santa Ana Water Board staff will issue to the Discharger a *Notice of Completion of Discharges Letter*, which will end the active discharge period and, if appropriate, associated annual fees.
10. The Discharger shall submit a *Request for Notice of Project Complete Letter* when construction and any required post-construction monitoring is complete and no further Project activities will occur. This request shall be submitted to Santa Ana Water Board staff within 30 days following completion of all Project activities. Upon approval of the request, Santa Ana Water Board staff will issue to the Discharger a *Notice of Project Complete Letter* and prepare a draft order terminating this Order for approval by the Santa Ana Water Board. The *Notice of Project Complete Letter* will end the post-discharge monitoring period, and either the expiration or Board approval of the termination of this Order will end the associated annual fees.
11. The Discharger shall retain records of all monitoring information, including all calibration and maintenance records, copies of all reports required by this Order, and records of all data used to complete the application for this Order. Records shall be maintained for a minimum of five years from the date of the sample, measurement, report, or application. Records may be maintained electronically. This period may be extended during the course of any unresolved enforcement action or litigation regarding this discharge or when requested by the Santa Ana Water Board.

SAN BERNARDINO COUNTY DEPARTMENT OF PUBLIC WORKS  
MAPLE LANE DRAINAGE MAINTENANCE PROJECT

12. The Discharger shall report any noncompliance that may endanger human health or the environment. Information shall be provided orally to the Santa Ana Water Board office and the Office of Emergency Services within twenty-four (24) hours of when the Discharger becomes aware of the incident. If noncompliance occurs outside of business hours, the Discharger shall leave a message on the Santa Ana Water Board's office voicemail. A written report shall also be provided within five business days of the time the Discharger becomes aware of the incident. The written report shall contain a description of the noncompliance and its cause, the period of noncompliance, the anticipated time to achieve full compliance, and the steps taken or planned to reduce, eliminate, and prevent recurrence of the noncompliance. All other forms of noncompliance shall be reported with the Discharger's next scheduled Monitoring Report, or earlier if requested by the Executive Officer.
13. Before initiating a new discharge or making a material change in the character, location, or volume of an existing discharge, the Discharger shall report all pertinent information in writing to the Santa Ana Water Board, and if required by the Santa Ana Water Board, obtain revised requirements before any modifications are implemented.
14. The Discharger shall allow the Santa Ana Water Board, or an authorized representative, upon presentation of credentials and other documents as may be required by law to:
  - a. Enter premises where a regulated facility or activity is located or conducted, or where records are kept under the requirements of this Order;
  - b. Access and copy any records that are kept under the requirements of this Order;
  - c. Inspect any facility, equipment (including monitoring and control equipment), practices, or operations regulated or required under this Order; and
  - d. Photograph, sample, or monitor for the purpose of assuring compliance with this Order or as otherwise authorized by the Water Code.
15. This Order becomes effective on the date of adoption by the Santa Ana Water Board.
16. This Order will remain valid for five years from the date of its adoption. The Discharger must file a new dredge and fill application in accordance

SAN BERNARDINO COUNTY DEPARTMENT OF PUBLIC WORKS  
MAPLE LANE DRAINAGE MAINTENANCE PROJECT

with California Code of Regulations, title 23, division 3, chapter 9 no later than 180 days in advance of this expiration date. The application, with filing fee, will be discussed between the Discharger and Santa Ana Water Board staff regarding any need for additional information and changes in fees prior to the issuance of new WDRs.

### **LIST OF ATTACHMENTS**

Attachment A—MAPS

Attachment B—REPORTS and NOTIFICATIONS

Attachment C—SIGNATORY REQUIREMENTS

### **ENFORCEMENT**

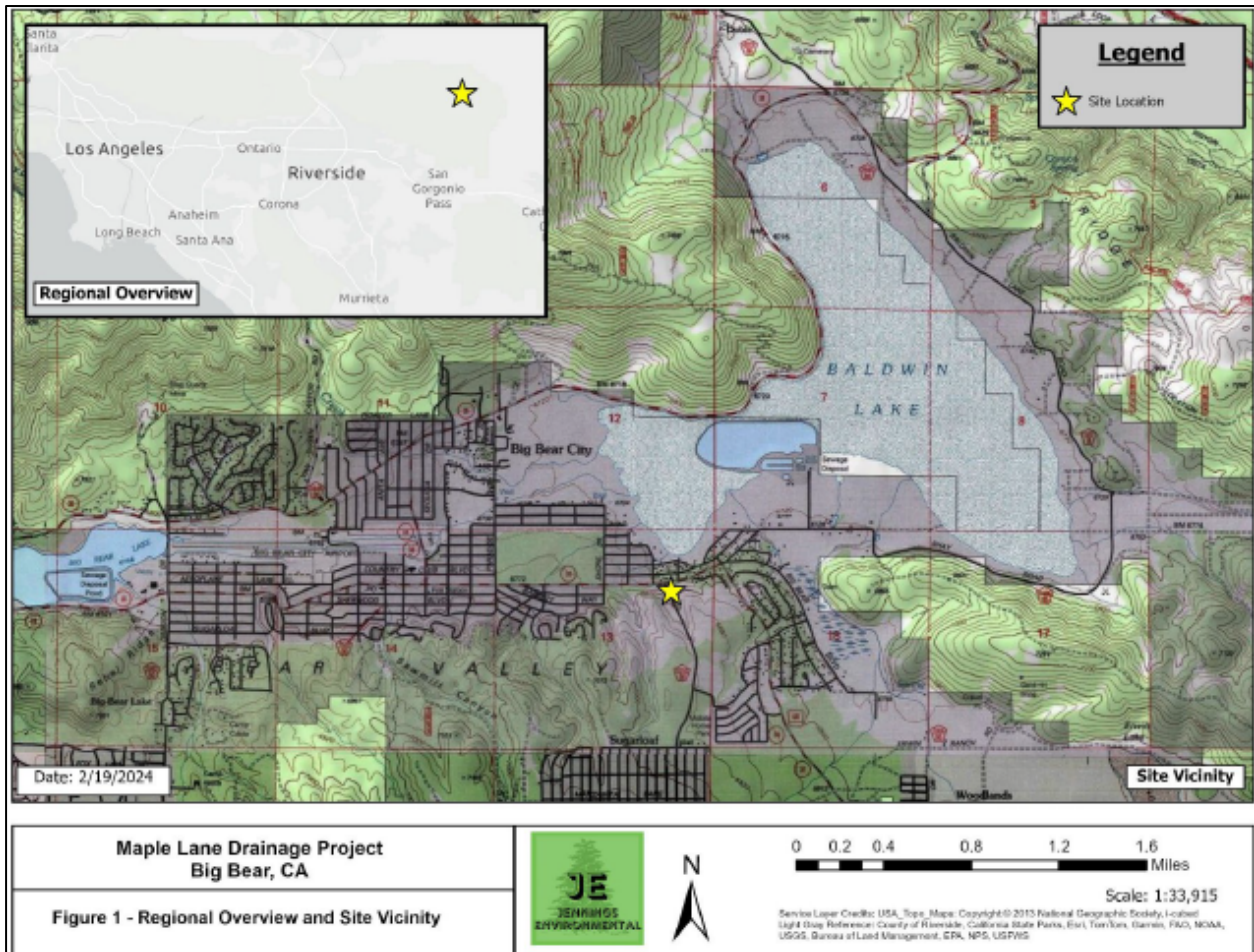
The Santa Ana Water Board reserves the right to take any enforcement action authorized by law. Accordingly, failure to timely comply with any provisions of this Order may subject the Discharger to enforcement action. Such actions include, but are not limited to, the assessment of administrative civil liability pursuant to Water Code sections 13323, 13268, and 13350, a Time Schedule Order (TSO) issued pursuant to Water Code sections 13300 and 13308, or referral to the California Attorney General for recovery of judicial civil liability.

### **ADMINISTRATIVE REVIEW**

Any person aggrieved by this Santa Ana Water Board action may petition the State Water Board for review in accordance with Water Code section 13320 and California Code of Regulations, title 23, section 2050 et seq. To be timely, the petition must be received by the State Water Board by 5:00 pm on the 30th day after the date of this Order; if the 30th day falls on a Saturday, Sunday or state holiday, the petition must be received by the State Water Board by 5:00 pm on the next business day. The law and regulations applicable to filing petitions are available on the [State Water Board website \(http://www.waterboards.ca.gov/public\\_notices/petitions/water\\_quality\)](http://www.waterboards.ca.gov/public_notices/petitions/water_quality). Copies will also be provided upon request.

SAN BERNARDINO COUNTY DEPARTMENT OF PUBLIC WORKS  
MAPLE LANE DRAINAGE MAINTENANCE PROJECT

**ATTACHMENT A—MAPS**



**Figure 1. Regional Overview and Site Vicinity**



SAN BERNARDINO COUNTY DEPARTMENT OF PUBLIC WORKS  
MAPLE LANE DRAINAGE MAINTENANCE PROJECT  
ATTACHMENT A—MAPS

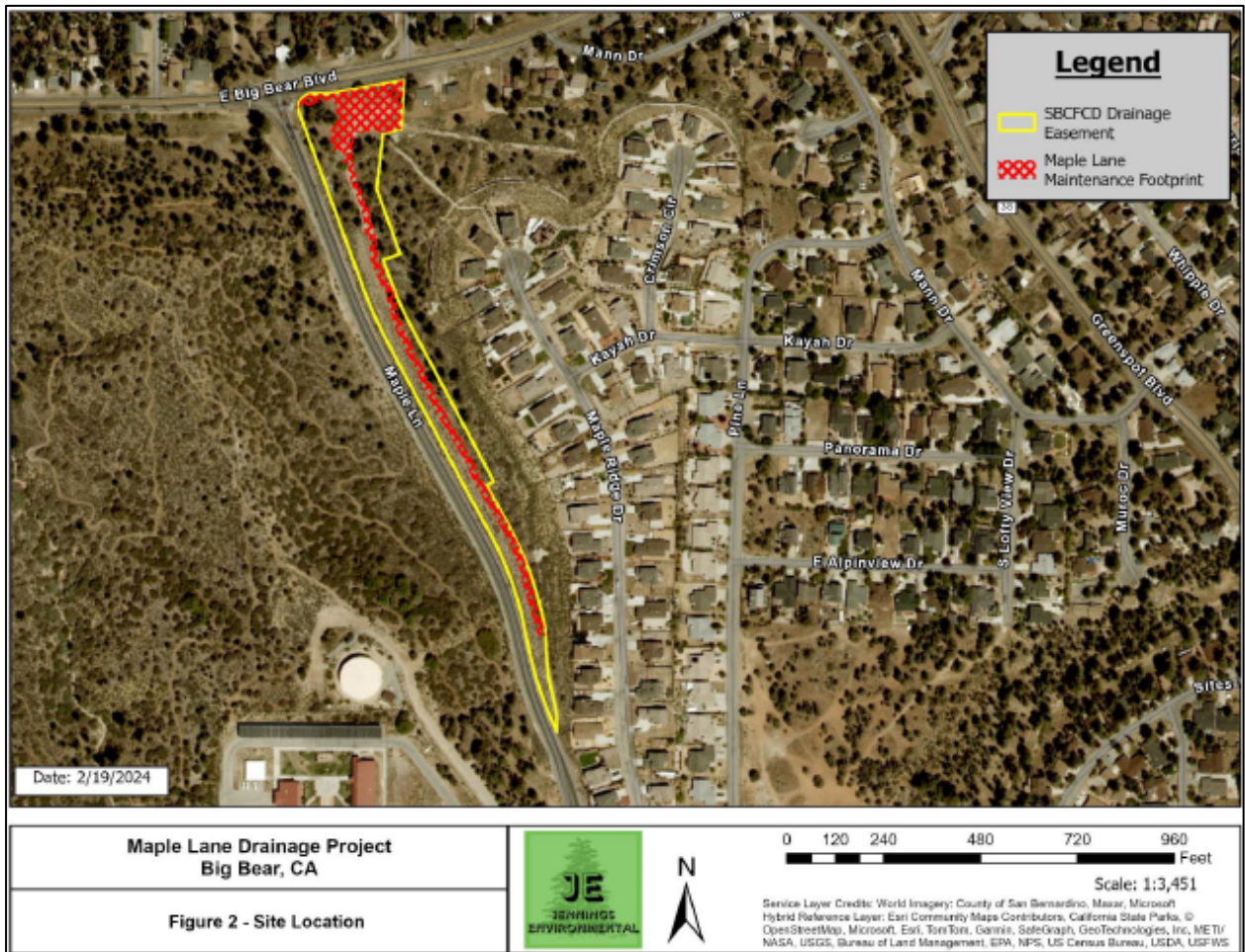


Figure 2. Site Location

SAN BERNARDINO COUNTY DEPARTMENT OF PUBLIC WORKS  
MAPLE LANE DRAINAGE MAINTENANCE PROJECT  
ATTACHMENT A—MAPS

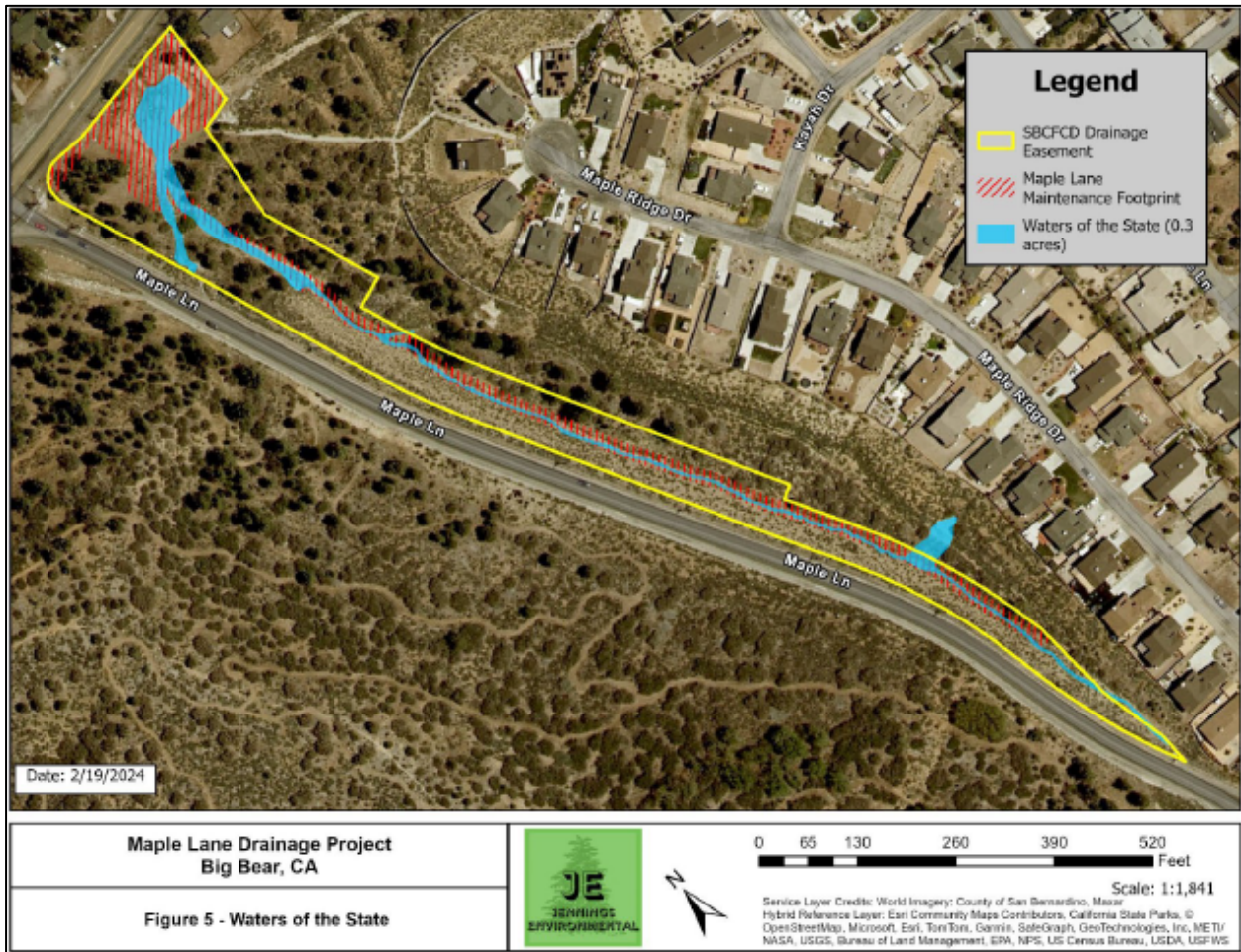


Figure 3. Waters of the State



## ATTACHMENT B—REPORTS AND NOTIFICATIONS

### Copies of this Form

In order to identify your Project, it is necessary to include a copy of the Project-specific Report and Notification Cover Sheet below with your report (see below). Please retain a copy for your records.

### Report Submittal Instructions

- 1) Check the box on the *Report and Notification Cover Sheet* next to the report or notification you are submitting.
  - a) Part A (Annual Report): Submitted annually from the anniversary of the Project effective date until a *Notice of Project Complete Letter* is issued.
  - b) Part B (Project Status Notifications): Used to notify the Santa Ana Water Board of the status of the Project schedule that may affect Project billing.
- 2) Sign the *Report and Notification Cover Sheet* and attach all information requested for the Report Type.
- 3) Electronic Report Submittal Instructions:
  - a) Submit signed *Report and Notification Cover Sheet* and required information via email to: [RB8-401Reporting@waterboards.ca.gov](mailto:RB8-401Reporting@waterboards.ca.gov)
  - b) Include in the subject line of the email: Order R8-2024-0064 and Report Type Name
  - c) Additionally, electronically submit Annual Reports using the State Water Board's California Integrated Water Quality System (CIWQS) Program website [California Integrated Water Quality System Project \(CIWQS\) | California State Water Resources Control Board](#). The CIWQS website will provide additional information for report submittal in the event there will be a planned service interruption for electronic submittal.

### Definition of Reporting Terms

- 1) **Active Discharge Period:** The active discharge period begins with the effective date of this Order and ends on the date that the Discharger receives a *Notice of Completion of Discharges Letter* or, if no post-construction monitoring is required, a *Notice of Project Complete Letter*. The Active Discharge Period includes all elements of the Project, including site construction and restoration, and any Discharger-responsible compensatory mitigation construction.
- 2) **Request for Notice of Completion of Discharges Letter:** This request by the Discharger to the Santa Ana Water Board staff pertains to projects that have post



SAN BERNARDINO COUNTY DEPARTMENT OF PUBLIC WORKS  
MAPLE LANE DRAINAGE MAINTENANCE PROJECT  
**ATTACHMENT B—REPORTS AND NOTIFICATIONS**

**Definition of Reporting Terms**

construction monitoring requirements (e.g., if site restoration were required to be monitored for five (5) years following construction). Santa Ana Water Board staff will review the request and send a *Completion of Discharges Letter* to the Discharger upon approval. This letter will initiate the post-discharge monitoring period and a change in fees from the annual active discharge fee to the annual post-discharge monitoring fee.

- 3) **Request for Notice of Project Complete Letter:** This request by the Discharger to the Santa Ana Water Board staff pertains to projects that either have completed post-construction monitoring and achieved performance standards, or have no post-construction monitoring requirements and no further Project activities are planned. Santa Ana Water Board staff will review the request and send a *Project Complete Letter* to the Discharger upon approval. Termination of annual invoicing of fees will correspond with the expiration or termination by Board action of this Order.

SAN BERNARDINO COUNTY DEPARTMENT OF PUBLIC WORKS  
MAPLE LANE DRAINAGE MAINTENANCE PROJECT  
**ATTACHMENT B—REPORTS AND NOTIFICATIONS**

**Map/Photo Documentation Information**

When submitting maps or photos, please use the following formats.

**1. Map Format Information:**

Preferred map formats of at least 1:24000 (1" = 2000') detail (listed in order of preference):

- **GIS shapefiles:** The shapefiles shall depict the boundaries of all Project areas and extent of aquatic resources impacted. Each shape should be attributed with the extent/type of aquatic resources impacted. Features and boundaries should be accurate to within 33 feet (10 meters). Identify datum/projection used and, if possible, provide map with a North American Datum of 1983 (NAD83) in the California Teale Albers projection in feet.
- **Google KML files** saved from Google Maps: My Maps or Google Earth Pro. Maps shall show the boundaries of all Project areas and extent/type of aquatic resources impacted. Include URL(s) of maps. If this format is used, include a spreadsheet with the object ID and attributed with the extent/type of aquatic resources impacted.
- **Other electronic format** (CAD or illustration format) that provides a context for location (inclusion of landmarks, known structures, geographic coordinates, or USGS DRG or DOQQ). Maps shall show the boundaries of all Project areas and extent/type of aquatic resources impacted. If this format is used, include a spreadsheet with the object ID and attributed with the extent/type of aquatic resources impacted.
- Aquatic resource maps marked on paper **USGS 7.5-minute topographic maps** or **Digital Orthophoto Quarter Quads (DOQQ)** printouts. Maps shall show the boundaries of all Project areas and extent/type of aquatic resources impacted. If this format is used, include a spreadsheet with the object ID and attributed with the extent/type of aquatic resources impacted.

- 2. Photo-Documentation:** Include a unique identifier, date stamp, written description of photo details, and latitude/longitude (in decimal degrees) or map indicating location of photo. Successive photos should be taken from the same vantage point to compare pre/post-construction conditions.

SAN BERNARDINO COUNTY DEPARTMENT OF PUBLIC WORKS  
 MAPLE LANE DRAINAGE MAINTENANCE PROJECT  
**ATTACHMENT B—REPORTS AND NOTIFICATIONS**

<b>Report and Notification Cover Sheet</b>
<b>Project:</b> Maple Lane Drainage Maintenance Project
<b>Discharger:</b> San Bernardino County Department of Public Works
<b>Order No.:</b> R8-2024-0064
<b>Order Effective Date:</b> October 25, 2024

<b>Report Type Submitted</b>
<input type="checkbox"/> Report Type 1: Annual Report
<input type="checkbox"/> Report Type 2: Commencement of Construction Report
<input type="checkbox"/> Report Type 3: Request for Notice of Completion Discharges Letter
<input type="checkbox"/> Report Type 4: Request for Notice of Project Complete Letter
<input type="checkbox"/> Report Type 5: Transfer of Property Ownership Report

“I certify under penalty of law that I have personally examined and am familiar with the information submitted in this document and all attachments and that, based on my inquiry of those individuals immediately responsible for obtaining the information, I believe that the information is true, accurate, and complete. I am aware that there are significant penalties for submitting false information, including the possibility of fine and imprisonment.”

---

STATEMENT OF AUTHORIZATION (include if authorization has changed since application was submitted)

I hereby authorize \_\_\_\_\_ to act in my behalf as my representative in the submittal of this report, and to furnish upon request supplemental information in support of this submittal.

---

SAN BERNARDINO COUNTY DEPARTMENT OF PUBLIC WORKS  
 MAPLE LANE DRAINAGE MAINTENANCE PROJECT  
**ATTACHMENT B—REPORTS AND NOTIFICATIONS**

<b>Report Type 1</b>	<b>Annual Report</b>
<b>Purpose:</b>	Notify the Santa Ana Water Board staff of Project status during both the active discharge and post-discharge monitoring periods.
<b>When to Submit:</b>	Annual reports shall be submitted each year by the effective date. Annual reports shall continue until a <i>Notice of Project Complete Letter</i> is issued to the Discharger.
<b>Report Contents:</b>	<p><b>Part A:</b></p> <ol style="list-style-type: none"> <li>1. Project progress and schedule, including initial ground disturbance, site clearing and grubbing, road construction, site construction, and the implementation status of construction storm water BMPs. If construction has not started, provide estimated start date and reasons for delay.</li> </ol> <p><b>Part B:</b></p> <ol style="list-style-type: none"> <li>1. Planned date of initiation of compensatory mitigation site installation.</li> <li>2. If installation is in progress, a map of what has been completed to date.</li> <li>3. If the compensatory mitigation site has been installed, provide a final map and information concerning attainment of performance standards contained in the compensatory mitigation plan.</li> <li>4. For Mitigation Bank or In-Lieu Fee (ILF) mitigation, status or proof of purchase of credit types and quantities.</li> <li>5. Include the name of bank/ILF Program and contact information.</li> </ol>

<b>Report Type 2</b>	<b>Commencement of Construction</b>
<b>Purpose:</b>	Notify the Santa Ana Water Board staff prior to the start of construction.
<b>When to Submit:</b>	Must be received at least seven (7) days to start of initial ground disturbance activities.
<b>Report Contents:</b>	<ol style="list-style-type: none"> <li>1. Date of commencement of construction.</li> <li>2. Anticipated date when discharges to waters of the state will occur.</li> <li>3. Project schedule milestones, including a schedule for onsite compensatory mitigation, if applicable.</li> </ol>

SAN BERNARDINO COUNTY DEPARTMENT OF PUBLIC WORKS  
 MAPLE LANE DRAINAGE MAINTENANCE PROJECT  
**ATTACHMENT B—REPORTS AND NOTIFICATIONS**

<b>Report Type 3</b>	<b>Request for Notice of Completion of Discharge Letter</b>
<b>Purpose:</b>	Notify Santa Ana Water Board staff that post-construction monitoring is required and that active Project construction, including any mitigation and Discharger-responsible compensatory mitigation, is complete.
<b>When to Submit:</b>	Must be received by Santa Ana Water Board staff within thirty (30) days following completion of all Project activities.
<b>Report Contents:</b>	<ol style="list-style-type: none"> <li>1. Status of storm water Notice of Termination(s), if applicable.</li> <li>2. Status of post-construction storm water BMP installation.</li> <li>3. Pre- and post-photo documentation of all Project activity sites where the discharge of dredge and/or fill/excavation was authorized.</li> <li>4. Summary of deviation discharge quantities compared to initial authorized impacts to waters of the state, if applicable.</li> <li>5. An updated monitoring schedule for mitigation for temporary impacts to waters of the state and Discharger-responsible compensatory mitigation during the post-discharge monitoring period, if applicable.</li> </ol>

<b>Report Type 4</b>	<b>Request for Notice of Project Complete Letter</b>
<b>Purpose:</b>	Notify Santa Ana Water Board staff that construction and/or any post-construction monitoring is complete, or is not required, and no further Project activity is planned.
<b>When to Submit:</b>	Must be received by Santa Ana Water Board staff within thirty (30) days following completion of all Project activities.
<b>Report Contents:</b>	<p><b>Part A: Mitigation for Temporary Impacts</b> (if applicable)</p> <ol style="list-style-type: none"> <li>1. A report establishing that the performance standards outlined in the restoration plan have been met for Project site upland areas of temporary disturbance that could result in a discharge to waters of the state.</li> <li>2. A report establishing that the performance standards outlined in the restoration plan have been met for restored areas of temporary impacts to waters of the state. Pre- and post-photo documentation of all restoration sites.</li> </ol>

SAN BERNARDINO COUNTY DEPARTMENT OF PUBLIC WORKS  
 MAPLE LANE DRAINAGE MAINTENANCE PROJECT  
**ATTACHMENT B—REPORTS AND NOTIFICATIONS**

<b>Report Type 4</b>	<b>Request for Notice of Project Complete Letter</b>
	<p><b>Part B: Discharger-Responsible Compensatory Mitigation</b> (if applicable)</p> <ol style="list-style-type: none"> <li>1. A report establishing that the performance standards outlined in the compensatory mitigation plan have been met.</li> <li>2. Status on the implementation of the long-term maintenance and management plan and funding of endowment.</li> <li>3. Pre- and post-photo documentation of all compensatory mitigation sites.</li> <li>4. Final maps of all compensatory mitigation areas (including buffers).</li> </ol>

<b>Report Type 5</b>	<b>Transfer of Property Ownership</b>
<b>Purpose:</b>	Notify Santa Ana Water staff of change in ownership of the Project or Discharger-responsible mitigation area.
<b>When to Submit:</b>	At least 30 working days prior to the transfer of ownership.
<b>Report Contents:</b>	<ol style="list-style-type: none"> <li>1. A statement that the Discharger has provided the purchaser with a copy of this Order and that the purchaser understands and accepts:             <ul style="list-style-type: none"> <li>• the Order’s requirements and the obligation to implement them or be subject to administrative and/or civil liability for failure to do so; and</li> <li>• responsibility for compliance with any long-term BMP maintenance plan requirements in this Order.</li> </ul> </li> <li>2. A statement that the Discharger has informed the purchaser to submit a written request to the Santa Ana Water Board to be named as the Discharger in a revised order.</li> </ol>

### **ATTACHMENT C—SIGNATORY REQUIREMENTS**

*All Documents Submitted in Compliance With this Order Shall Meet the Following Signatory Requirements*

1. All applications, reports, or information submitted to the Santa Ana Water Board shall be signed and certified as follows:
  - a. For a corporation, by a responsible corporate officer of at least the level of vice-president.
  - b. For a partnership or sole proprietorship, by a general partner or proprietor, respectively.
  - c. For a municipality, or a State, federal, or other public agency, by either a principal executive officer or ranking elected official.
2. A duly authorized representative of a person designated in items 1.a through 1.c above may sign documents if:
  - a. The authorization is made in writing by a person described in items 1.a through 1.c above.
  - b. The authorization specifies either an individual or position having responsibility for the overall operation of the regulated activity.
  - c. The written authorization is submitted to the Santa Ana Water Board staff contact prior to submitting any documents listed in item 1 above.
3. Any person signing a document under this section shall make the following certification:

“I certify under penalty of law that I have personally examined and am familiar with the information submitted in this document and all attachments and that with the information submitted in this document and all attachments and that, based on my inquiry of those individuals immediately responsible for obtaining the information, I believe that the information is true, accurate, and complete. I am aware that there are significant penalties for submitting false information, including the possibility of fine and imprisonment.”