

Sustainable Groundwater Management Act

Public Workshop For Proposed
Designation of Kaweah Subbasin
as a Probationary Basin

June 24, 2024



State Water Resources Control Board

Participation Poll

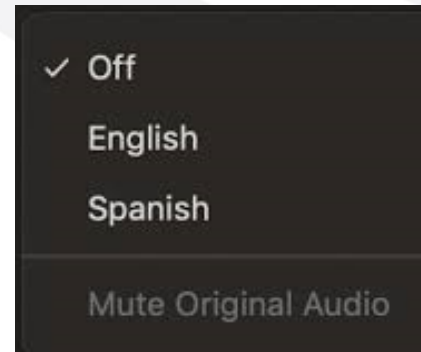
Please take a moment to follow the prompts on the poll by following the link in the chat.



Opción de Interpretación en Zoom

Seleccione el icono de interpretación desde los controles de la pantalla

- Haga clic en “Interpretation” en el menú
- Seleccione español (*Spanish*)
- Seleccione la opción para poner el audio original en silencio (*Mute Original Audio*)



Language Interpretation through Zoom

Click the Interpretation icon in your meeting controls

- Navigate to Language Channels
- Select Spanish OR English
- Mute Original Audio

Preguntas sobre Zoom? Envíe un mensaje a Jackson vía el chat.

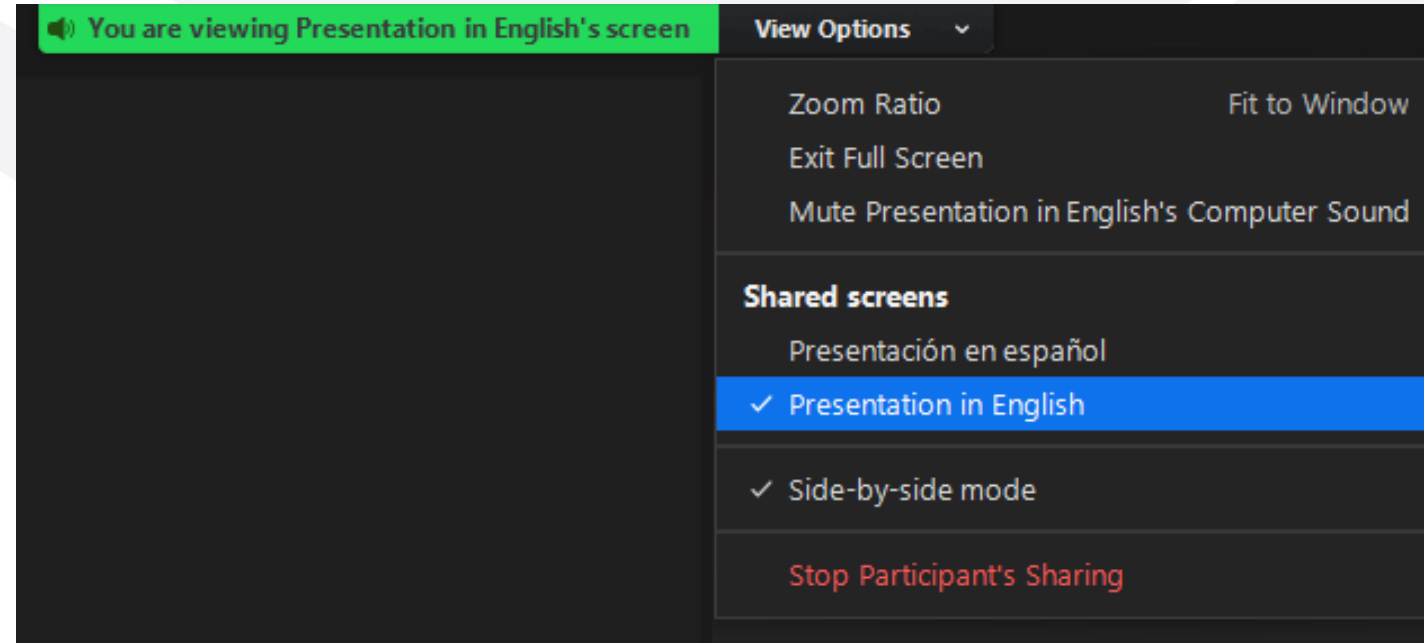
Zoom Questions? Send a message to Jackson in the Chat.

Opciones de Pantalla en Zoom

Haga clic en “View Options” en la parte superior de su pantalla y seleccione “Presentación en español” O “Presentation in English”

Preguntas sobre Zoom?

Envíe un mensaje a Jackson vía el chat.



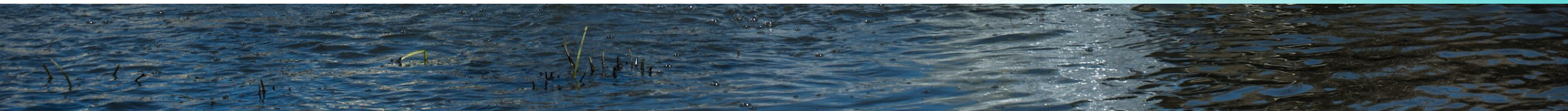
View Options on Zoom

Click on View Options at the top of your screen and select "Presentación en español" or "Presentation in English."

Zoom Questions? Send a message to Jackson in the Chat.



Community Guidelines

- 1. Please rename yourself and provide affiliation if it applies**
 - 2. Engage respectfully and avoid personal attacks – verbally or in the chat**
 - 3. Use chat to communicate comments and/or questions to speakers**
 - 4. Please use "Raise Hand" function and wait until the facilitator calls on you to speak**
 - 5. Please remain muted when not speaking**
 - 6. During the comment portion, we will go in order of hands raised and may provide a time limit if there are many people who would like to comment**
- 

Zoom Meeting Controls

How to Use 

To Raise Hand
Press Reactions,
select "Raise Hand"

Black menu bar at top or bottom of screen:



Mute/Unmute Yourself
Please remain muted when not speaking

Turn on/off your video

View all participants
and see where you are in comment line

Send a message
Select chat window to send comments/questions to speakers

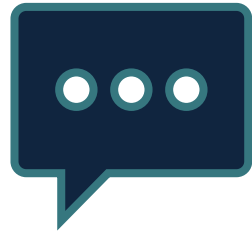


Mute/Unmute Yourself on Phone
Select *6



Zoom Comments/Questions? Send message to Jackson using chat

How to Participate



Written Comments

Submit Questions and
Comments During the
Meeting by
Utilizing Chat

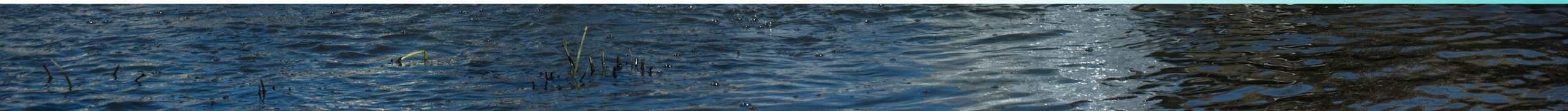


Verbal Comments

Raise Hand
Video On or Off
"Unmute" when
Called On by Facilitator

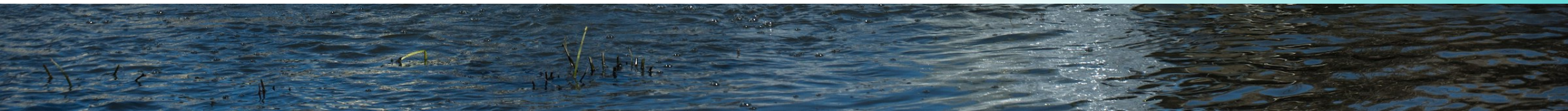


Objectives

- 1. Provide an opportunity for the public to learn about the draft staff report, which describes the recommendations of the State Water Resources Control Board staff regarding the proposed designation of the Kaweah Subbasin as a probationary basin.**
 - 2. Provide an opportunity for the public to interact with State Water Resources Control Board staff and raise their questions and concerns.**
 - 3. Provide an opportunity for the public to provide verbal and written comments on the draft recommendations.**
- 

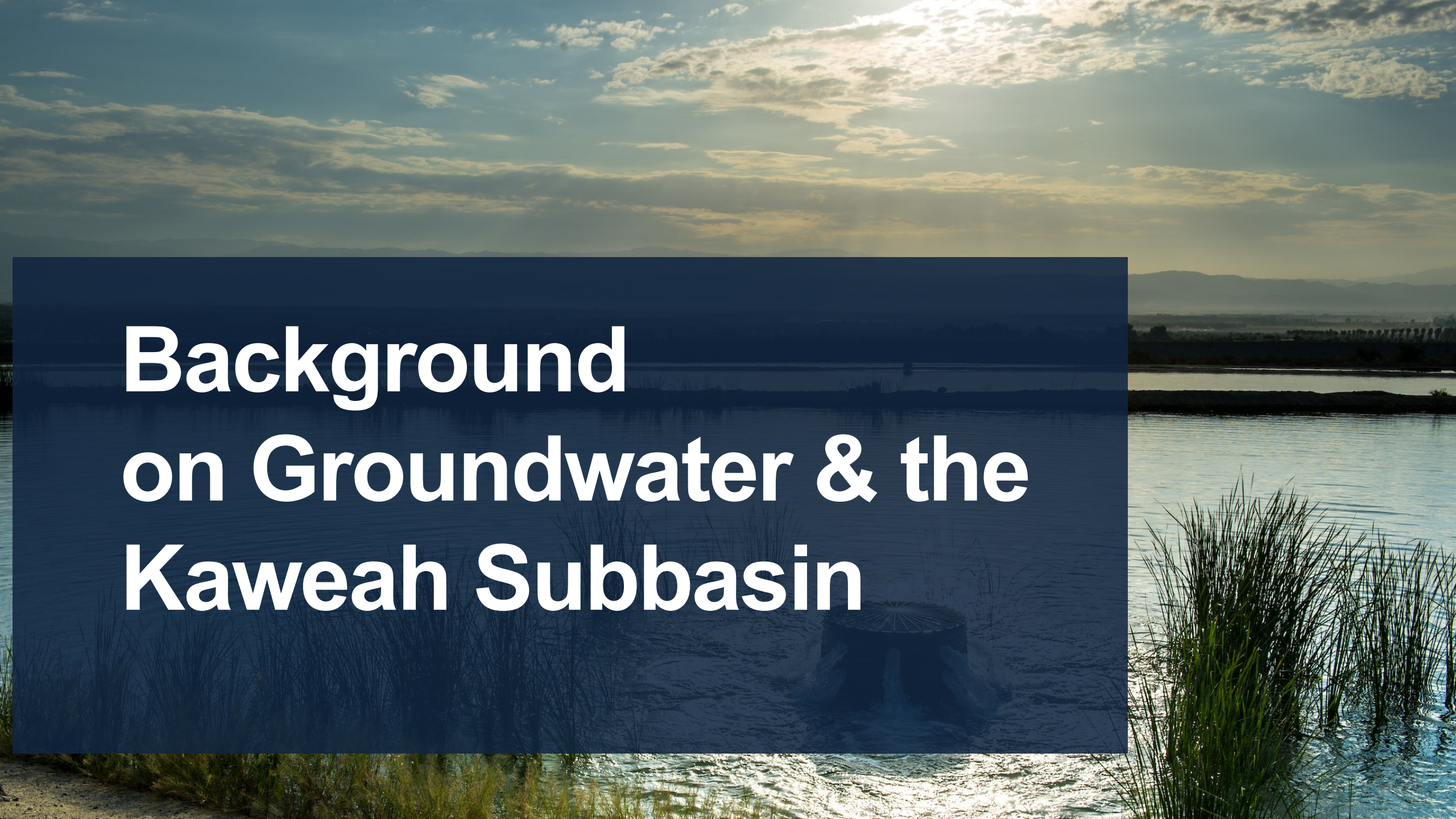


Public Workshop Agenda

1. Opening Remarks
 2. Groundwater & Kaweah Subbasin Background
 3. Overview of State Intervention Under SGMA
 4. Plan Issues Described in Staff Report
 5. Proposed Requirements for Groundwater Extractors
 6. Public Q&A on Probationary Hearing Process
 7. Presentation from the Kaweah Groundwater Sustainability Agencies
 8. Next Steps
 9. Public Comment (Starts at 12:30 pm)
- 



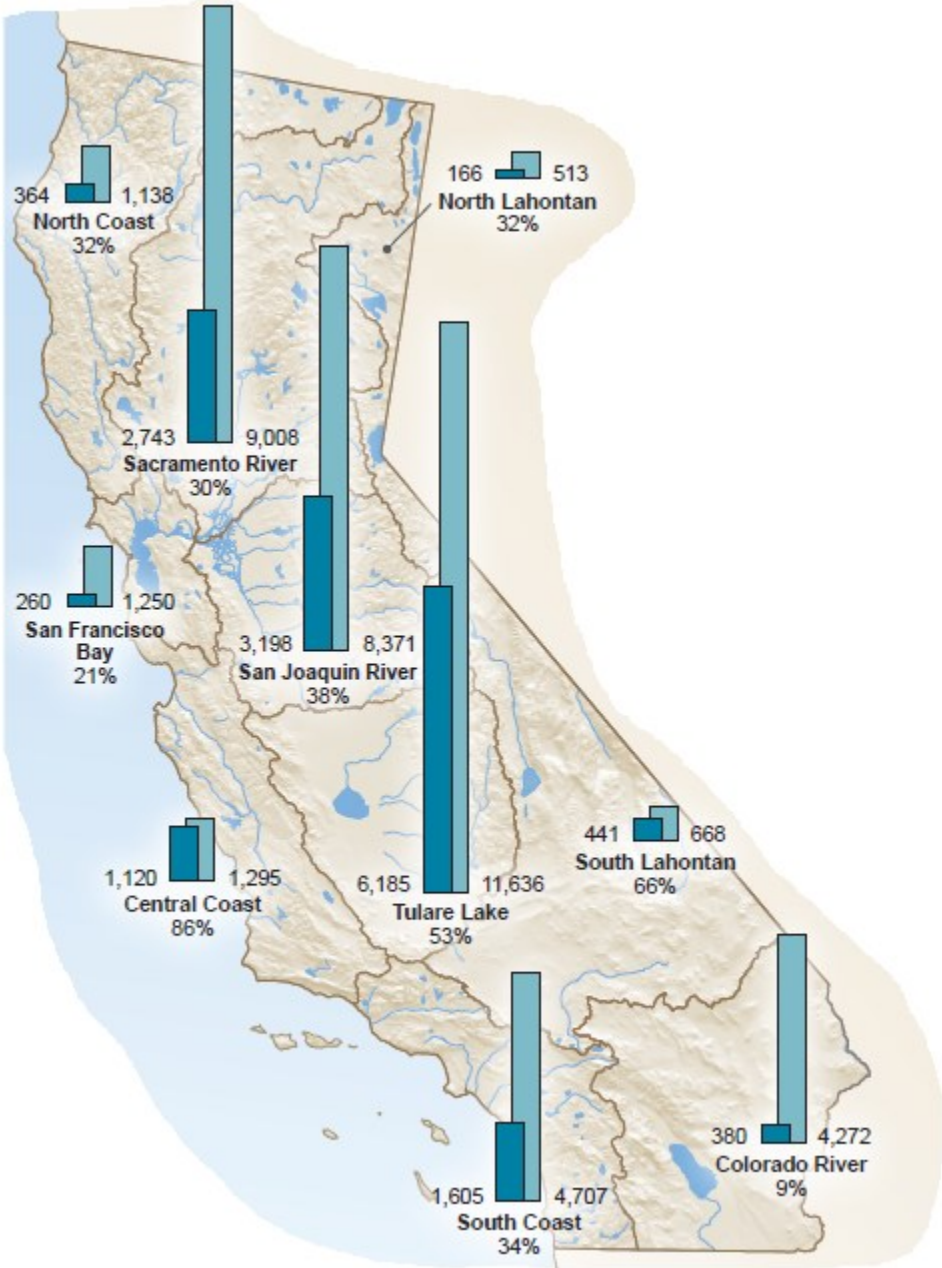
Opening Remarks



Background on Groundwater & the Kaweah Subbasin

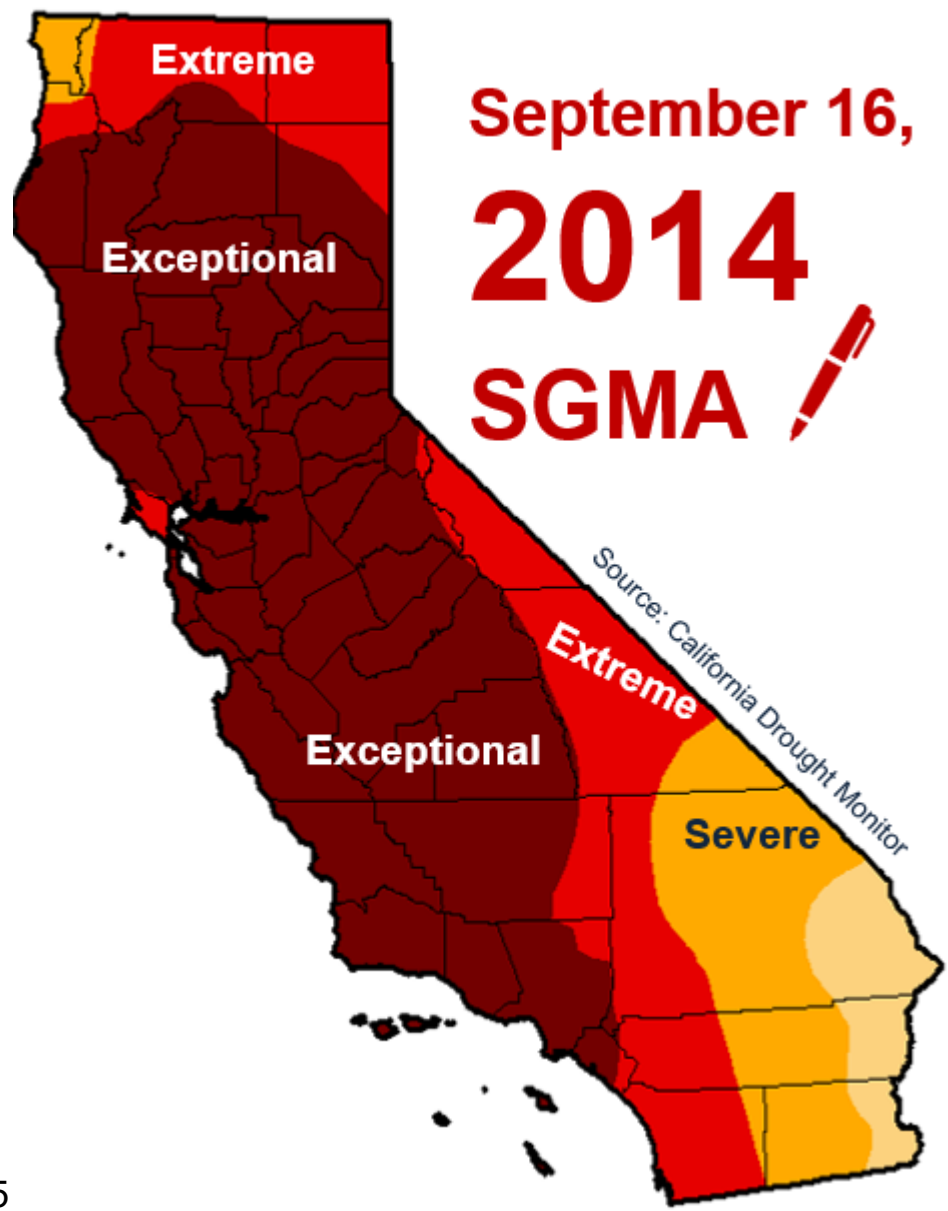
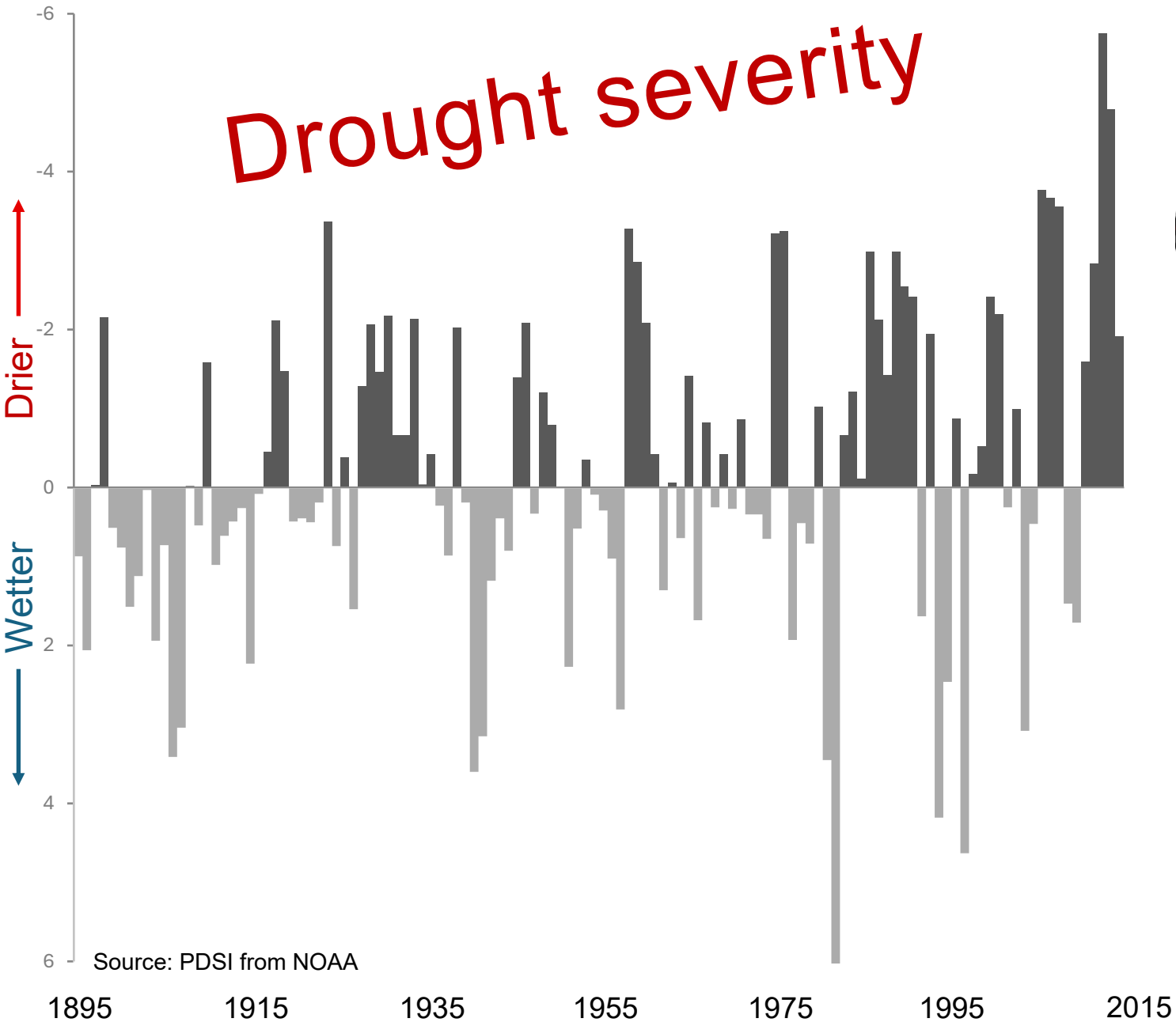
80%

of Californians rely on
GROUNDWATER
for part of their water
supply

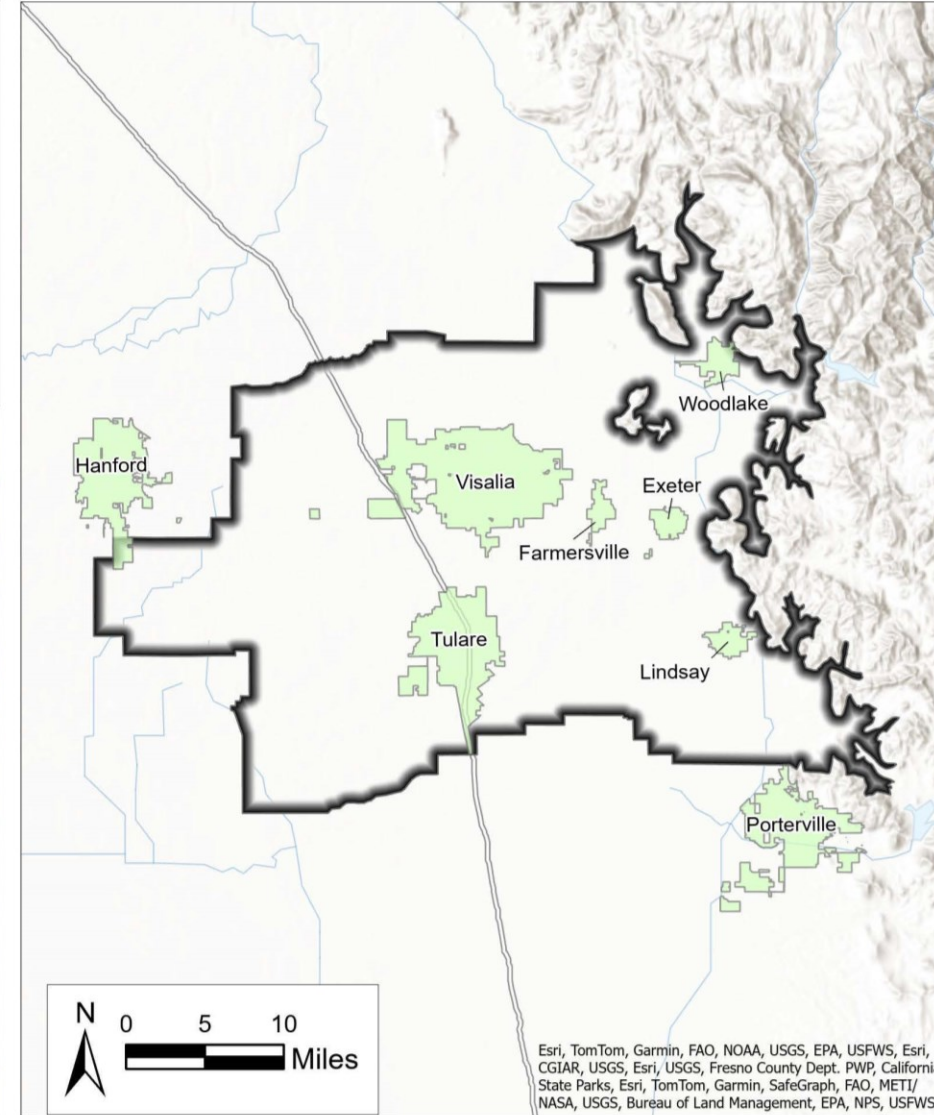


■ Total Water
■ Use Met

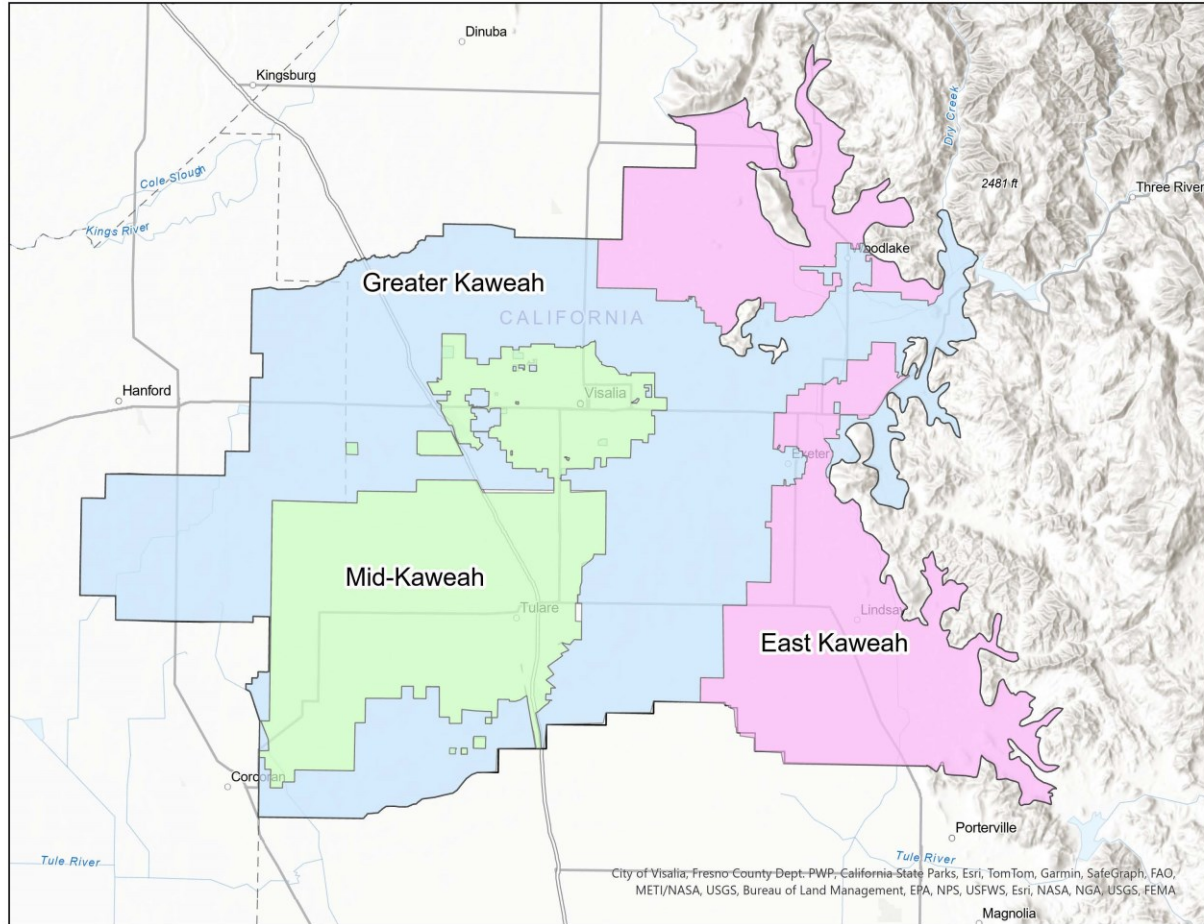
Drought severity



Kaweah Subbasin



Kaweah Subbasin



Three Groundwater Sustainability Agencies (GSAs)

- East Kaweah GSA
- Greater Kaweah GSA
- Mid-Kaweah GSA

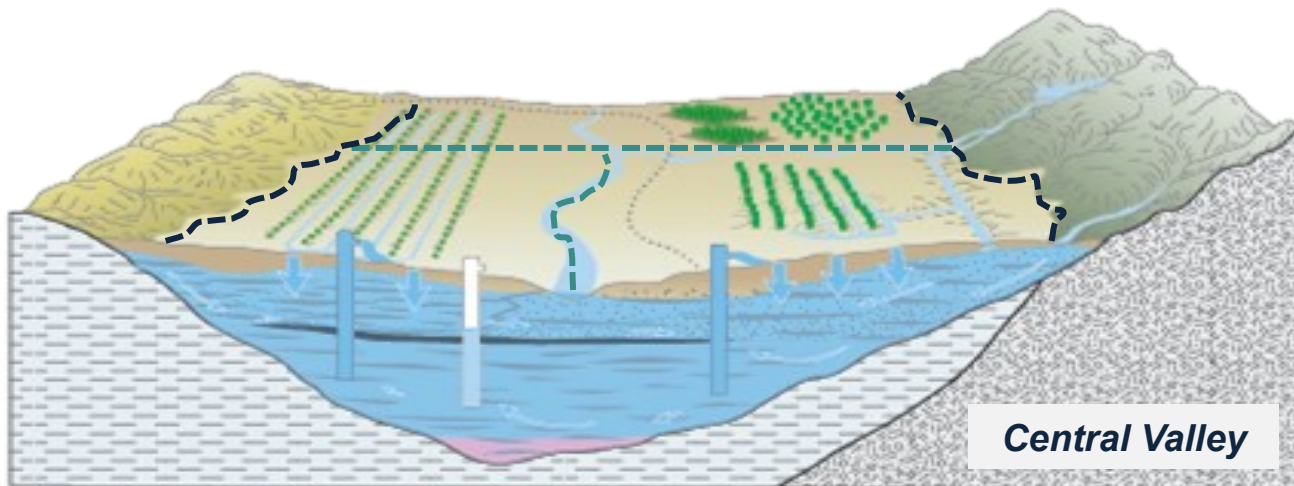
Three Groundwater Sustainability Plans (GSPs)

- East Kaweah GSP
- Greater Kaweah GSP
- Mid-Kaweah GSP

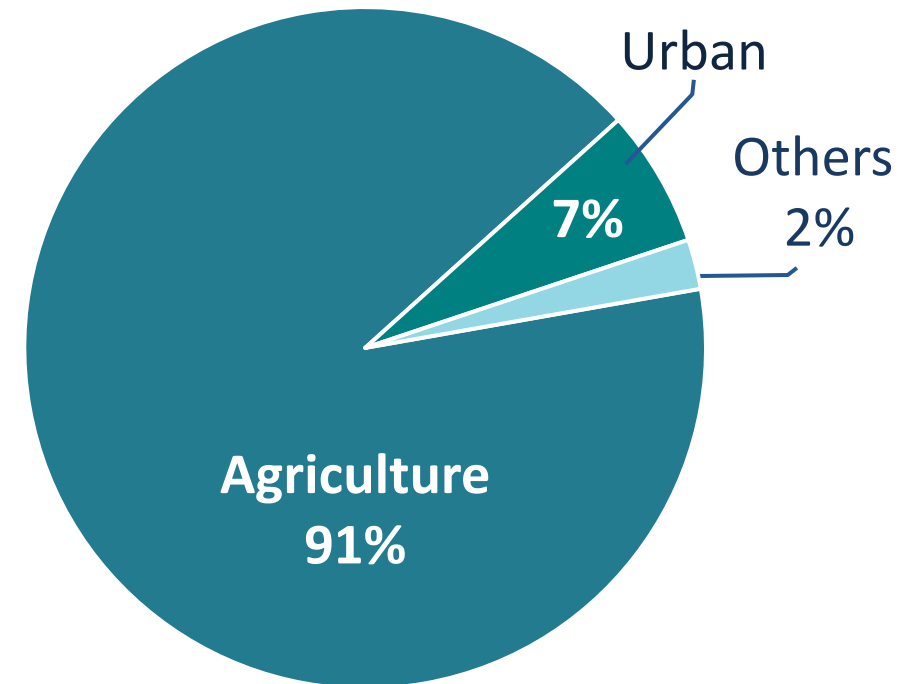
Kaweah Subbasin

Groundwater Uses

- Municipal and domestic supply
- Drinking Water
- Agricultural supply
- Industrial and service supply

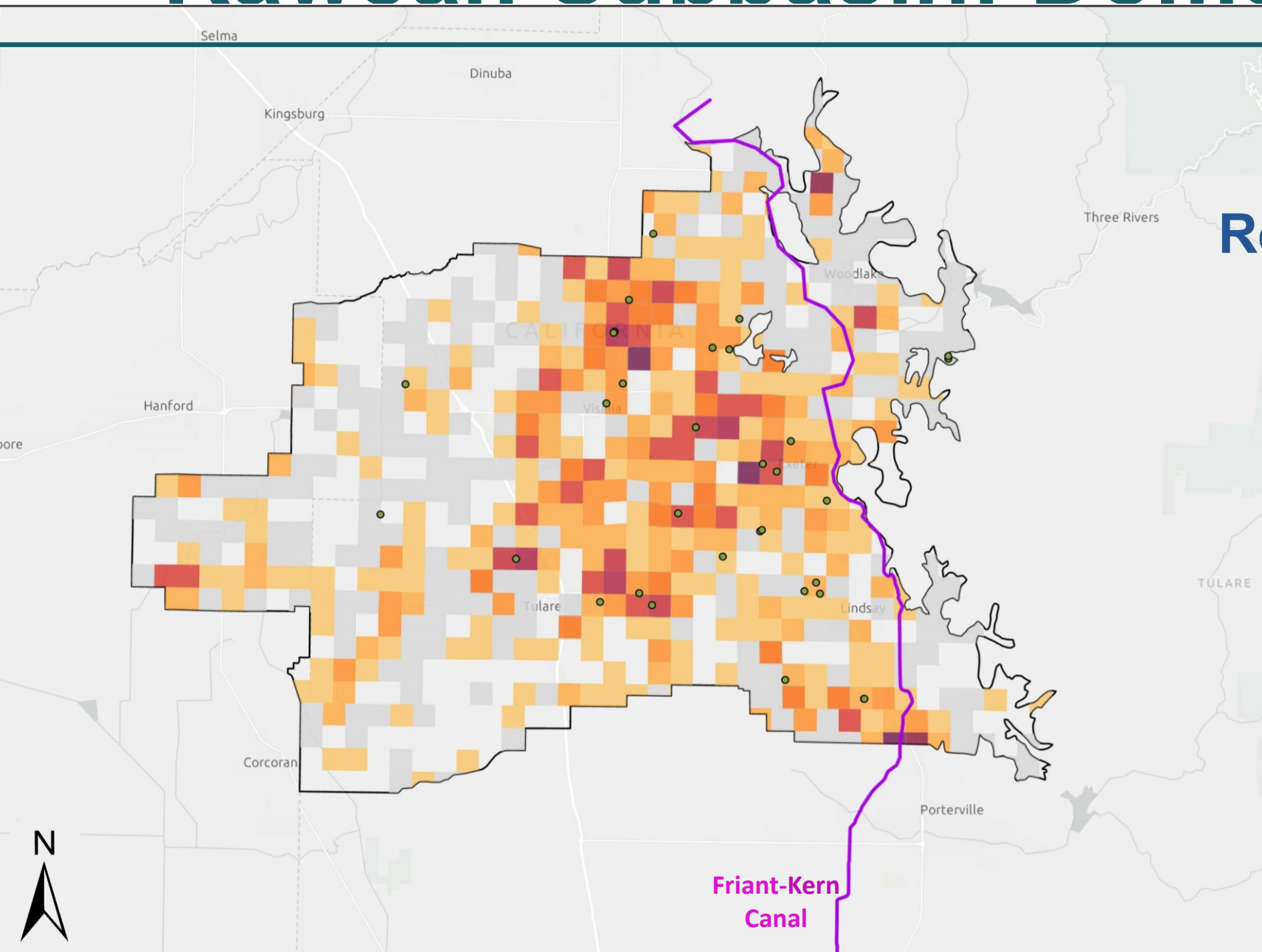


Groundwater Extractions October 2021 – September 2022

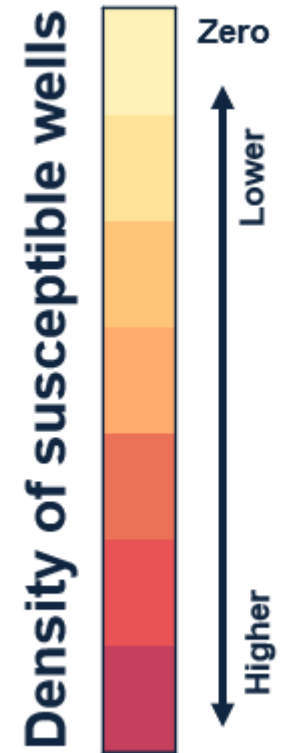


Data Source: WY 2022 Kaweah Subbasin Annual Report

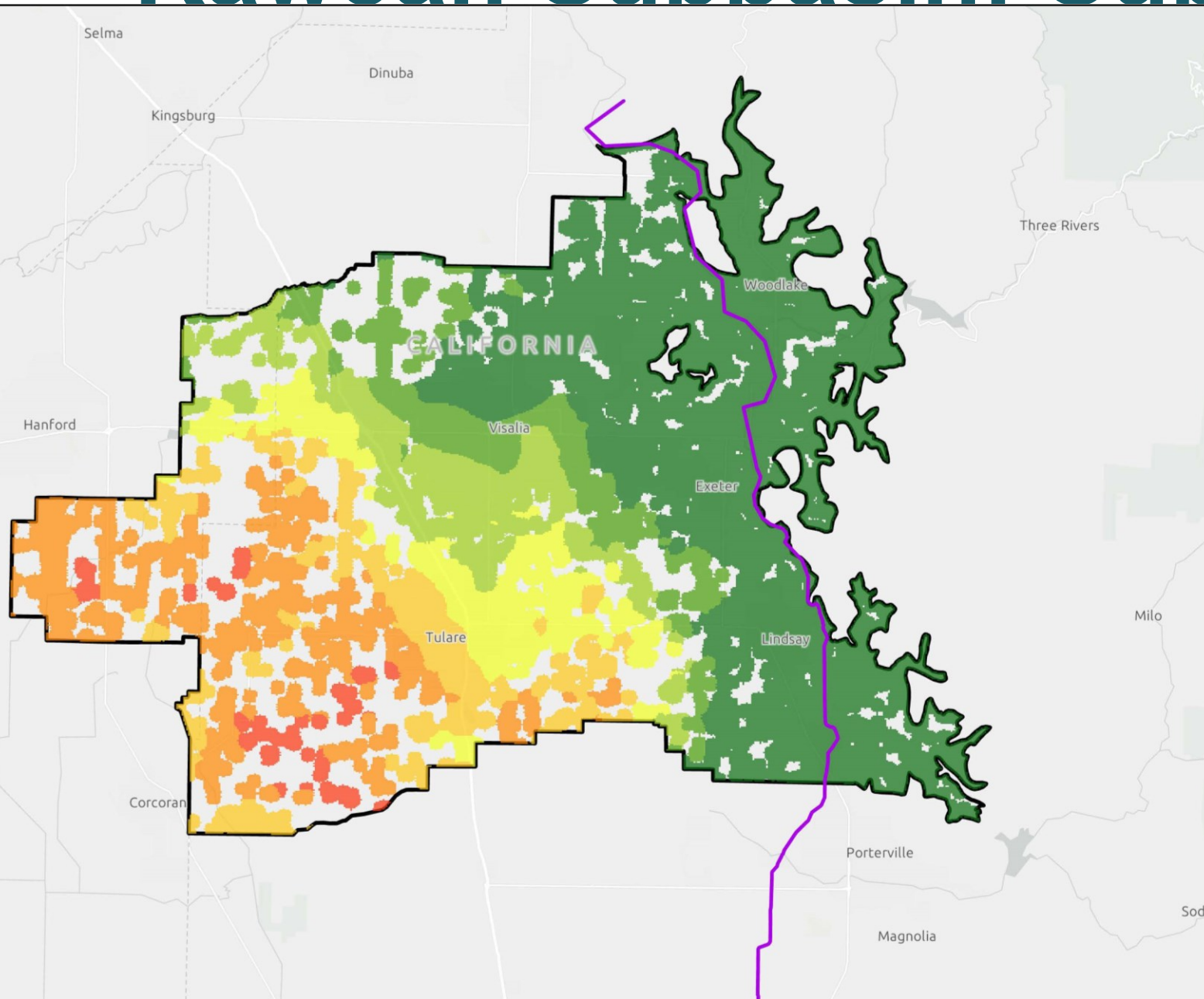
Kaweah Subbasin: Domestic Wells



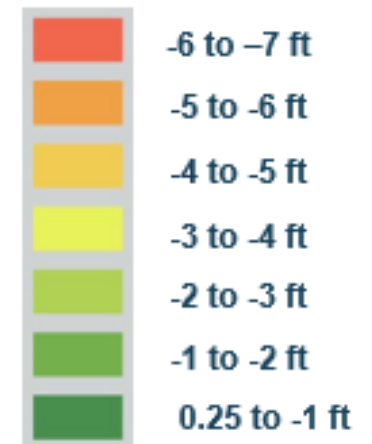
Susceptible: 872
Reported dry in 2023: 34



Kaweah Subbasin: Subsidence



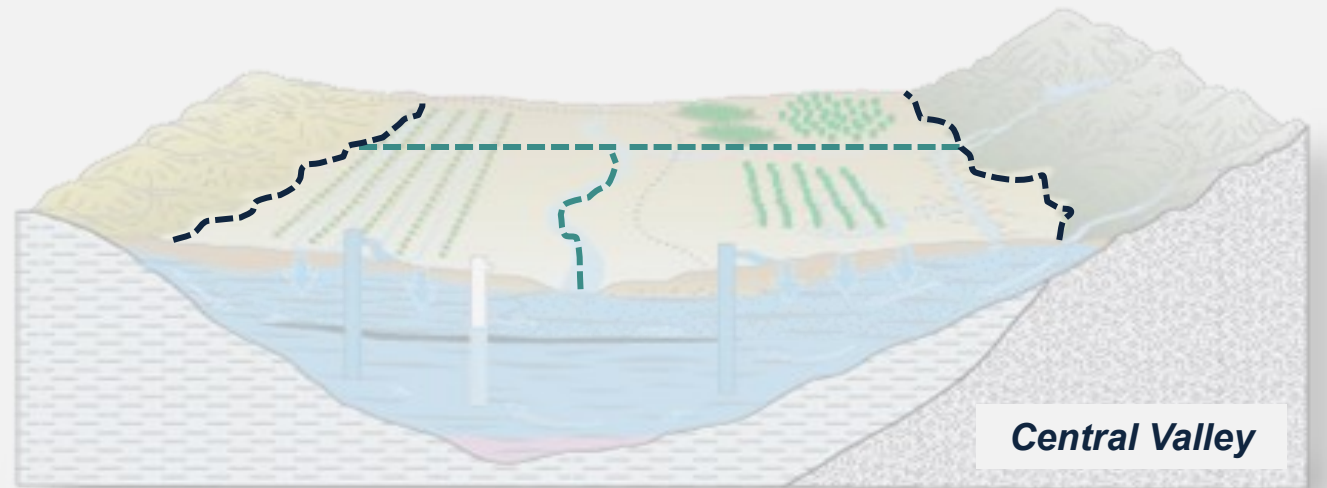
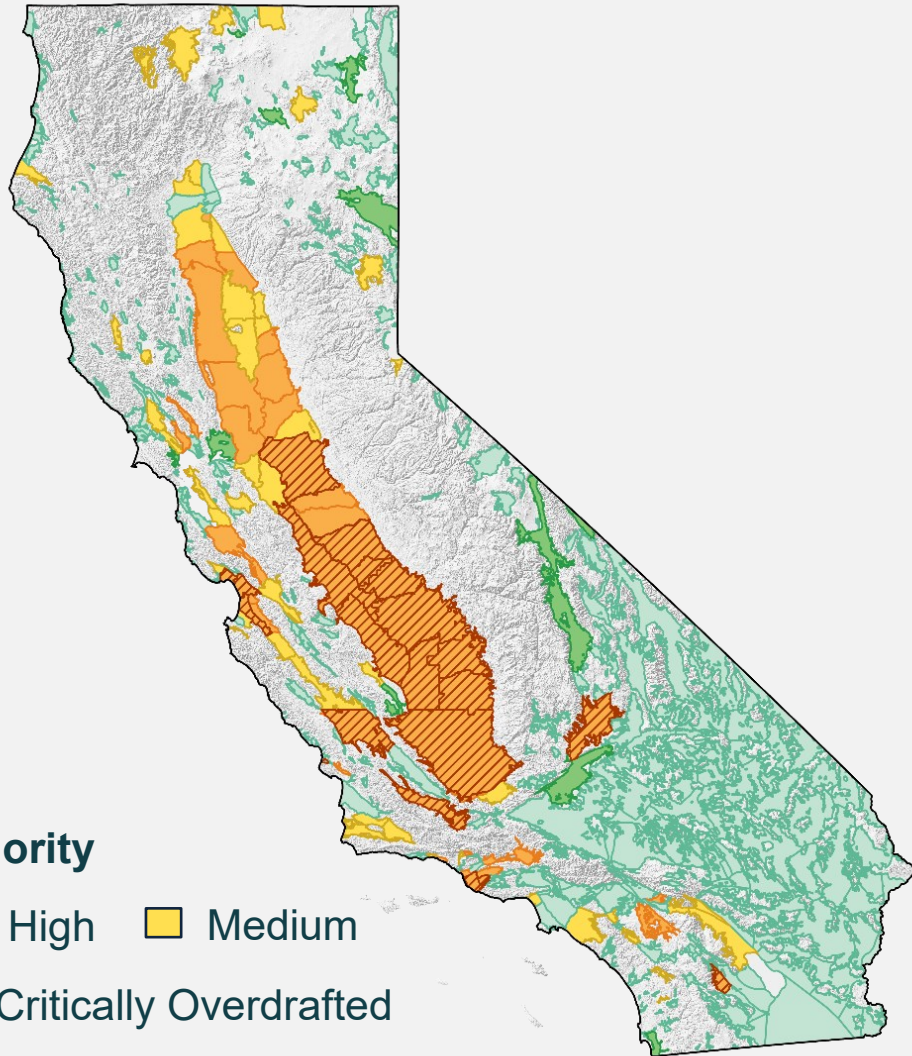
Subsidence from InSAR:
June 2015 to January 2024



A scenic landscape featuring a large body of water, reeds, and a sunset sky with mountains in the distance. The sun is low on the horizon, casting a warm glow over the scene. The water is calm, reflecting the sky and the surrounding vegetation. In the foreground, there are tall reeds and grasses. In the background, there are mountains and a city skyline. A dark blue semi-transparent box is overlaid on the left side of the image, containing the text.

State Intervention Under SGMA

SGMA AT THE BASIN SCALE



Basins & Subbasins

SGMA Authorities

**Groundwater
Sustainability Agencies
(GSAs)**

**CA Department of Water
Resources (DWR)**



**State Water Resources
Control Board**

What is Sustainability?

Basin operated within its sustainable yield and not experiencing undesirable results:



Lowering
GW Levels



Storage
Reduction



Seawater
Intrusion



Degraded
Quality



Land
Subsidence



Surface
Depletion

Significant and unreasonable...

...caused by groundwater conditions occurring throughout the basin.

“

Where a local groundwater sustainability agency is not managing its groundwater sustainably,

the state needs to protect the resource

until... a local groundwater sustainability agency can sustainably manage the groundwater basin.

”

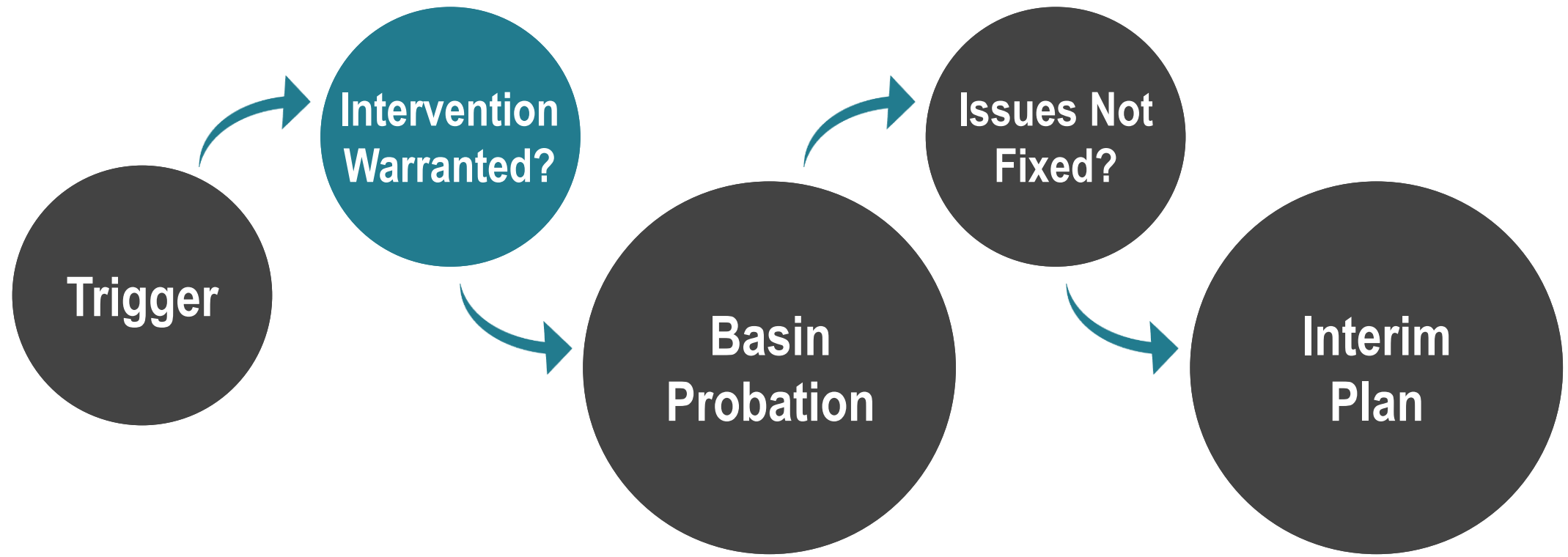
California Legislature

Board Backstop Basics

- 1 Board only steps in when local efforts fail.
- 2 Temporarily protects the basin until locals come up-to-speed.
- 3 Backstop is triggered by deadlines and deficiencies.



State Water Resources Control Board Intervention



Probationary groundwater BASIN



Board identifies deficiencies



GSAs have time to address issues
& continue to implement their plans



Extractors begin reporting



Board may require meters



Board recovers costs via fees



Extraction **REPORTS**

Reports are submitted annually.

Reports require...

- well location & capacity
- monthly extraction volumes
- place & purpose of use

Reports must be filed electronically.

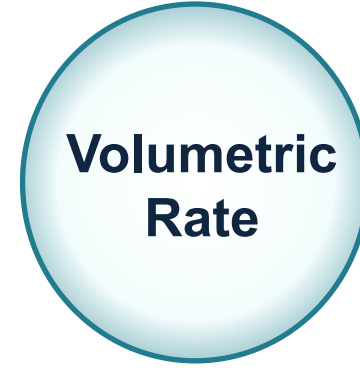
Information on extraction reports is available at https://www.waterboards.ca.gov/sgma/reporting_and_fees.html.

Probationary Extraction Reporting Fees

If the Board places the basin on probation



+



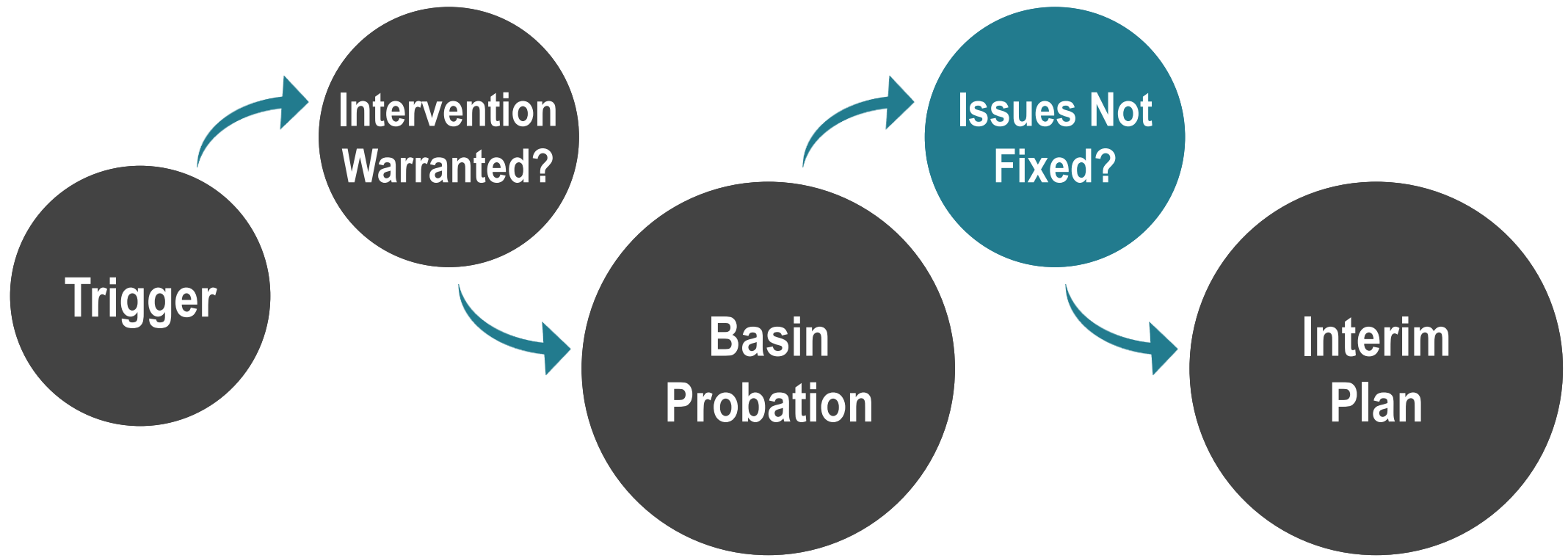
**\$300 per well
per year**

**\$20 per acre-
foot extracted**

Late reporting fee: 25% per month late

*Fee waivers available for DACs, public schools, and those with low income

State Water Resources Control Board Intervention





A scenic view of a lake at sunset. The sky is filled with soft, golden clouds, and the sun is low on the horizon, casting a warm glow. The water is calm, reflecting the sky. In the foreground, there are tall, green reeds. A dark blue horizontal band is overlaid across the middle of the image, containing white text.

Groundwater Sustainability Plans' Issues Described in Draft Staff Report



Staff Recommendations

- **Work with GSAs and meet regularly to walk through revised GSPs.**
- **The 2022 plans will allow substantial impacts to**
 - **People who rely on domestic wells**
 - **Critical infrastructure**
 - **Groundwater quality**
 - **The aquifer itself**
- **GSAs released revised GSPs for public comment on **June 13**.**
- **Board staff are currently reviewing the revised GSPs**
- **Improved plans are necessary to achieve sustainability in the basin by 2040.**

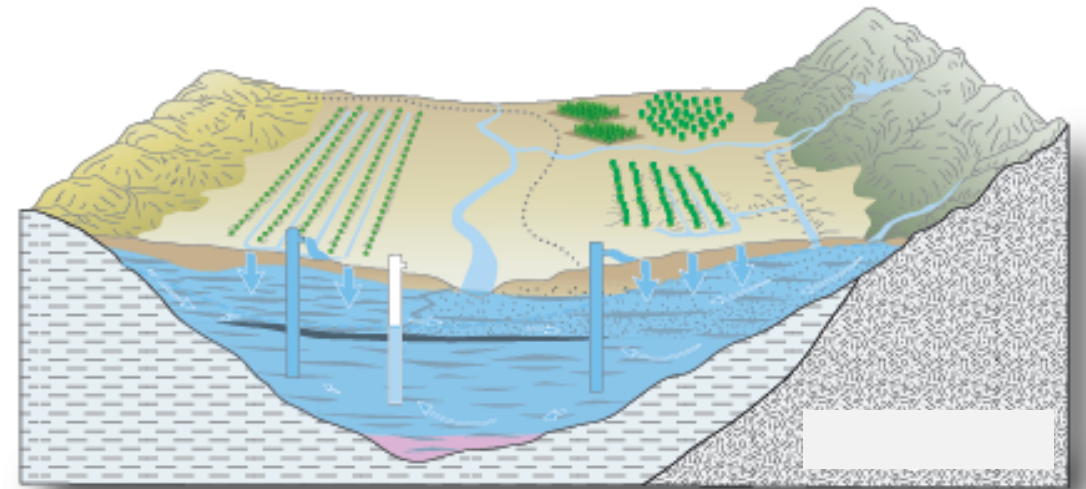
GSP Elements

Groundwater Conditions

Sustainability Criteria

Monitoring

Projects & Actions



Plan Deficiencies

Issues with:



Declining Groundwater Levels



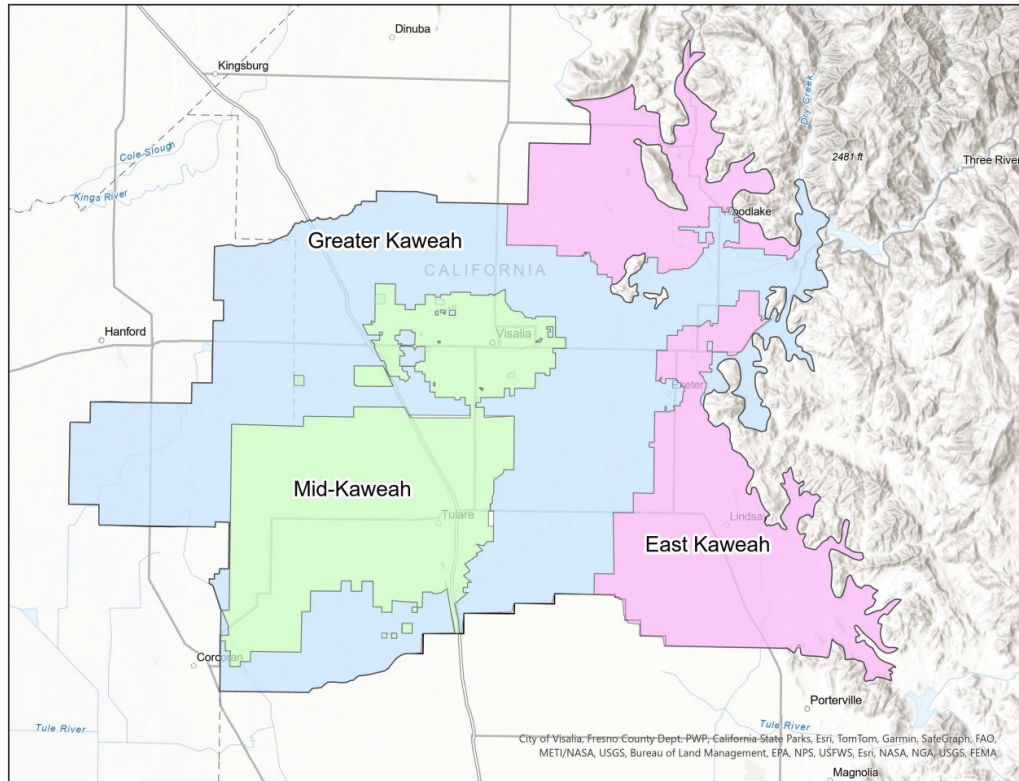
Land Subsidence (Sinking)



Water Quality Degradation



Interconnected Surface Water



Potential Consequences: Declining Groundwater Levels

- **Threatens drinking water sources by causing wells to go dry or reducing their productivity**
- **Increases costs to deepen or drill new wells**
- **Increases energy costs of pumping**
- **Increases cost of water for everyone**
- **Causes subsidence, degrades groundwater quality, and depletes interconnected surface water**

Plan Deficiencies: Declining Groundwater Levels

Problems with:

- **Description of what the GSPs are trying to avoid (“undesirable result”)**
 - **Example: how many wells go dry, how low water levels in the aquifers can go**
- **Potential impacts to groundwater users**
 - **Under current GSPs, 1545 of 4004 domestic wells (39%) and 53 of 422 (13%) public supply wells would go dry at groundwater level minimum thresholds**
- **Potential impacts to subsidence, groundwater quality, etc.**
- **Role and scope of well mitigation program**

Potential Consequences: Land Subsidence

- **Reduces carrying capacity of gravity-driven water conveyance**
 - **Reduces surface water deliveries and increases flooding risks**
 - **Example: Friant-Kern Canal has sunk several inches. Continued subsidence could impair surface water deliveries and be expensive to repair. The GSAs have noted that the Friant-Kern canal will lose 10% carrying capacity if there is 10 inches or more of subsidence along the canal within the subbasin.**
- **Damages deeper wells**
- **Damages infrastructure like roads, utilities, and pipelines**
- **Causes irreversible damage to groundwater aquifers and lasting damage to aquatic ecosystems**

Plan Deficiencies: Land Subsidence

Problems with:

- **Description of what the GSAs are trying to avoid**
 - **Example: amount of damage to canals (for example, the Friant-Kern canal), levees, or wells, loss of storage in aquifers**
- **Subsidence impacts caused by declining groundwater levels**
- **Significant impacts to conveyance infrastructure without mitigation**

Potential Consequences: Degraded Groundwater Quality

- **Can cause chronic diseases that could result in death**
- **Can cause foul taste and odor**
- **Can result in irrigation water that is not suitable for crops**
- **Treatment may be difficult and very expensive**
- **May require alternative water source**

Plan Deficiencies: Degraded Groundwater Quality

Problems with:

- **Description of the groundwater quality conditions to avoid undesirable results**
- **Delayed identification of areas with degraded groundwater quality**
- **Allowing some drinking water to degrade below drinking water standards**
- **Monitoring of domestic drinking water wells**

Potential Consequences:

Depletion of Interconnected Surface Water

- **Substantially transforms/harms habitat and wildlife**
- **Threatens recreation including fishing & hunting**
- **Reduces available surface water available for human use**

Plan Deficiencies:

Depletion of Interconnected Surface Water

Problems with:

- **Potential impacts to groundwater users**
- **Allowing 50% of surface water depletions in select waterways due to groundwater extractions**
- **Assessing depletion of interconnected surface water**
- **Lack of monitoring of the depletion of interconnected surface water**



Recommended Requirements For Groundwater Extractors

Staff Recommendations

- **Exclude household domestic well users from reporting and fees**
- **Require other pumpers to report by December of each year**
- **Require meters for those pumping more than 200 acre-feet a year**
- **Require meters for those pumping from the Friant-Kern Canal band (except for household domestic well users)**
- **Do not exclude any portion of the basin from probationary status**

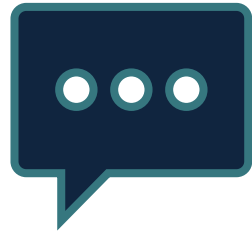
Public Q & A

A scenic view of a lake at sunset. The sun is low on the horizon, creating a bright reflection on the water. In the foreground, there are several clumps of tall, green reeds. In the middle ground, a circular structure, possibly a well or a small island, is partially submerged in the water, with water splashing around it. The background shows a distant city skyline and mountains under a sky with scattered clouds.

Public Comment



How to Participate



Written Comments

Submit Questions and
Comments During the
Meeting by
Utilizing Chat



Verbal Comments

Raise Hand
Video On or Off
"Unmute" when
Called On by Facilitator

Kaweah Schedule

2024

May 6, 2024



Release draft deficiencies

Notice to cities and counties

May 7, 2024



Notice to all known pumpers

June 24 & 27, 2024



Public Workshop

May 6 – July 8, 2024



Public comment period

December 2024*



Release final deficiencies

Issue draft resolution

January 7, 2025*



Hearing

Potential probationary designation

*subject to change or cancellation

Written Comments

Electronic:

Email in PDF format to
SGMA-Kaweah@waterboards.ca.gov

Fax to (916) 341-5620

Mail or Hand Delivery:

Address to:

Courtney Tyler, Clerk to the Board
State Water Resources Control
Board

Mail: P.O. Box 100, Sacramento,
CA 95812

Hand Delivery: 1001 I Street, 24th
Floor, Sacramento, CA 95814

Comments must be received by July 8, 2024, at 12:00 noon.

Thank you and Adjourn

[SGMA Kaweah Subbasin website](#)



Plan Deficiencies:

Declining Groundwater Levels and Land Subsidence

- **The Kaweah GSA representatives will discuss groundwater level and land subsidence deficiencies as identified by the Department of Water Resources and State Water Board staff and how the 2024 revised GSPs will address the deficiencies.**
- **Board staff are committed to meeting regularly with the Kaweah GSAs to support addressing all deficiencies including additional deficiencies identified by Board staff related to degradation of groundwater quality and depletion of interconnected surface water.**
- **Board staff are in the process of doing a red flag review and have not completed a thorough review of the revised draft GSPs that were released for public comment on **June 13.****
- **Board staff will require a minimum of five months to complete a thorough review of the revised adopted GSPs.**