

# Sustainable Groundwater Management Act: Kaweah Subbasin

Proposed Resolution 2025-XXX

December 2, 2025

Item No. 6



Office of Sustainable Groundwater Management

# Language Interpretation In Person

## Interpretación en persona

ਵਿਅਕਤੀਗਤ ਤੌਰ 'ਤੇ ਪੰਜਾਬੀ ਭਾਸ਼ਾ ਵਿੱਚ ਵਿਆਖਿਆ

Please visit the table outside this room for a headset or if you have technical difficulties.

---

Diríjase a la mesa fuera de esta sala para solicitar un auricular o si tiene dificultades técnicas.

---

ਇਸ ਕਮਰੇ ਦੇ ਬਾਹਰ ਮੇਜ਼ 'ਤੇ ਜਾਓ ਜੇਕਰ ਤੁਹਾਨੂੰ ਹੈੱਡਸੈੱਟ ਦੀ ਲੋੜ ਹੈ ਜਾਂ ਤੁਹਾਨੂੰ ਕੋਈ ਤਕਨੀਕੀ ਮੁਸ਼ਕਲ ਪੇਸ਼ ਆ ਰਹੀ ਹੈ।



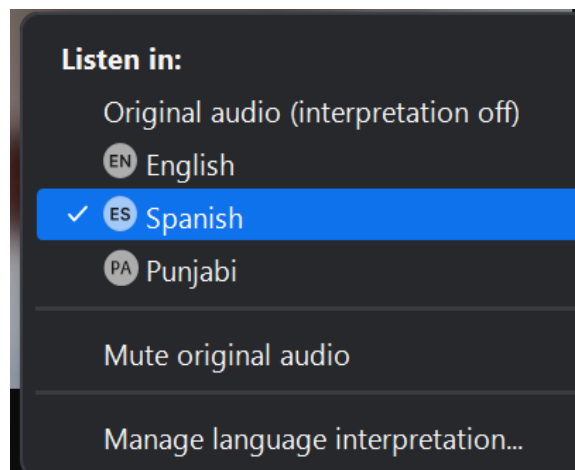
## Opción de Interpretación en Zoom

- Seleccione el icono de interpretación desde los controles de la pantalla
- Seleccione español (*Spanish*)
- Seleccione la opción para poner el audio original en silencio (*Mute Original Audio*)



## Language Interpretation through Zoom

- Click the Interpretation icon in your meeting controls
- Select Spanish OR English OR Punjabi
- Mute Original Audio



## ਜੂਮ ਰਾਹੀਂ ਭਾਸ਼ਾ ਅਨੁਵਾਦ

- ਆਪਣੇ ਮੀਟਿੰਗ ਕੰਟਰੋਲਾਂ ਵਿੱਚ ਅਨੁਵਾਦ ("Interpretation") ਆਈਕਨ ਤੇ ਕਲਿੱਕ ਕਰੋ
- ਸਪੈਨਿਸ਼ ਜਾਂ ਅੰਗਰੇਜ਼ੀ ਜਾਂ ਪੰਜਾਬੀ ਚੁਣੋ
- ਮੂਲ ਆਡੀਓ ਨੂੰ ਮਿਊਟ (ਆਵਾਜ਼ ਬੰਦ) ਕਰੋ

PI Presentation in English's screen

PE Presentacion Espanol's screen

PI Presentation in Punjabi's screen

To view slides in your preferred language, click on "Presentation in English," "Presentación en español," or "Presentation in Punjabi" at the top of the screen.

Para ver las diapositivas en su idioma preferido, haga clic en "Presentation in English", "Presentación en español", o "Presentation in Punjabi" en la parte superior de la pantalla.

ਸਲਾਈਡਾਂ ਨੂੰ ਆਪਣੀ ਪਸੰਦੀਦਾ ਭਾਸ਼ਾ ਵਿੱਚ ਦੇਖਣ ਲਈ, ਸਕ੍ਰੀਨ ਦੇ ਉੱਪਰ "Presentation in English," "Presentación en español," or "Presentation in Punjabi" 'ਤੇ ਕਲਿੱਕ ਕਰੋ।

For technical assistance, email

**[Board.Clerk@waterboards.ca.gov](mailto:Board.Clerk@waterboards.ca.gov)**

---

Si necesita ayuda técnica, envíe un mensaje electrónico a

**[Board.Clerk@waterboards.ca.gov](mailto:Board.Clerk@waterboards.ca.gov)**

---

ਤਕਨੀਕੀ ਸਹਾਇਤਾ ਲਈ, ਇਸ ਵੈੱਬਸਾਈਟ 'ਤੇ ਈਮੇਲ ਕਰੋ

**[Board.Clerk@waterboards.ca.gov](mailto:Board.Clerk@waterboards.ca.gov)**



# Sustainable Groundwater Management Act: Kaweah Subbasin

Item to consider returning the  
Subbasin to DWR



Office of Sustainable Groundwater Management





# **Staff Presentation**

- 1. Kaweah Subbasin Background**
- 2. SGMA Process in the Kaweah Subbasin**
- 3. GSP Revisions of Deficiencies**
- 4. Staff Recommendations to the Board**

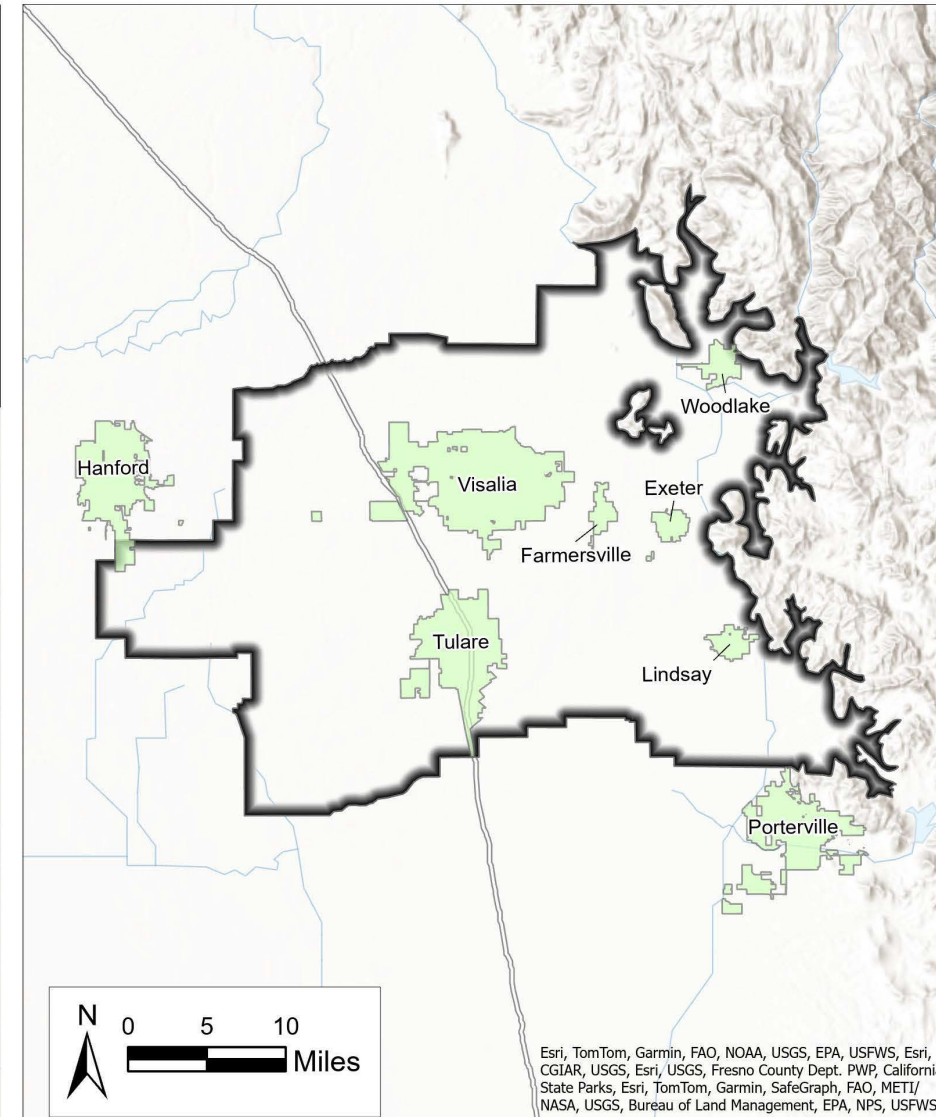


# Kaweah Subbasin Background

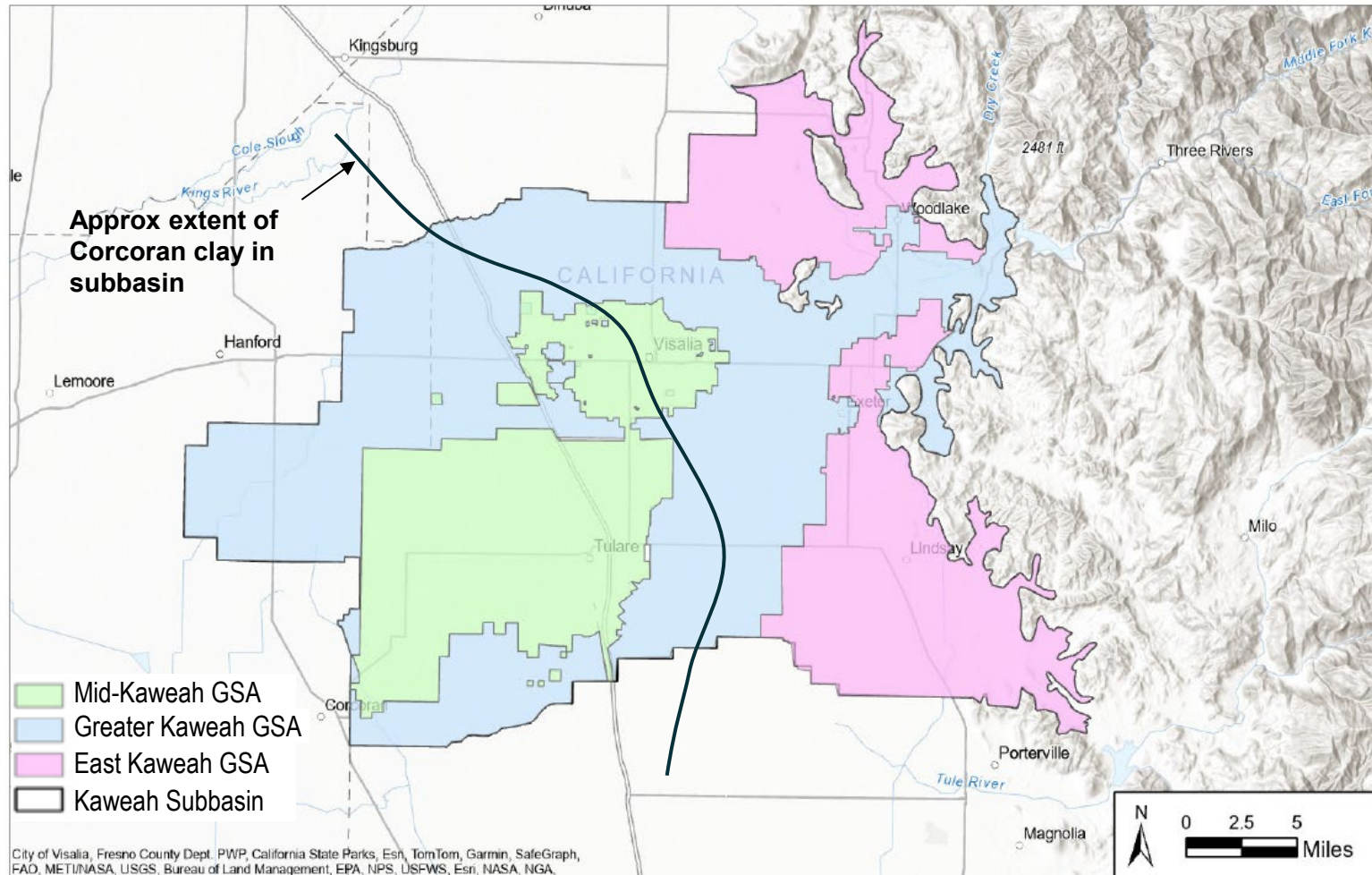




# Kaweah Subbasin Physical Setting



# Groundwater Sustainability Agencies



Data Source: DWR SGMA Portal (Accessed December 2023)

## ▶ 3 GSAs

### ▶ East Kaweah GSA

### ▶ Mid-Kaweah GSA

### ▶ Greater Kaweah GSA

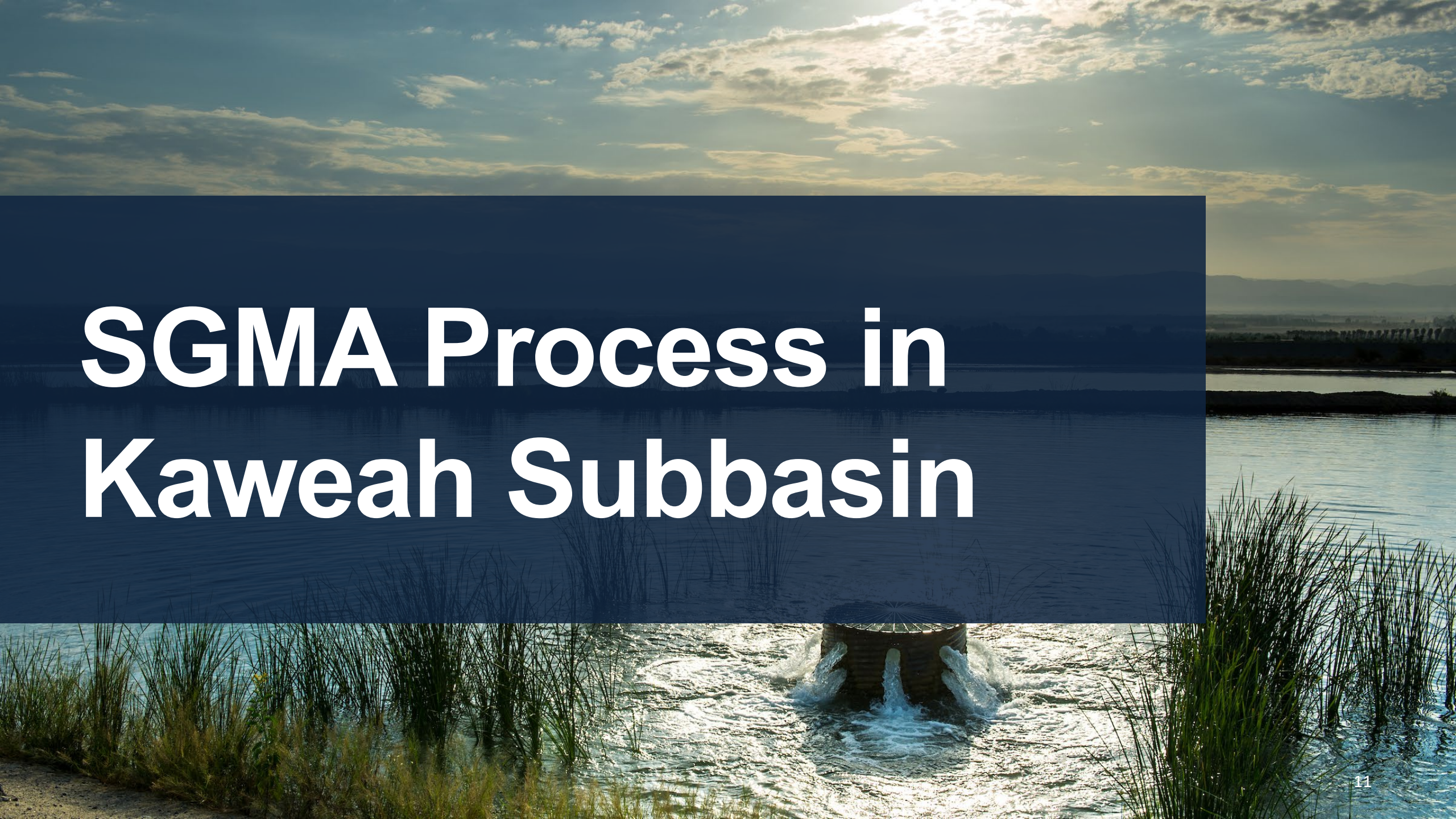
## ▶ Aquifers:

### ▶ Single Aquifer: Located in the eastern portion of the subbasin

### ▶ Upper and Lower Aquifer: Located in the central and western portion of the subbasin



# SGMA Process in Kaweah Subbasin





# The Kaweah GSAs continued to be responsive since being referred to the Board





# Board staff coordinated with GSAs



June 2024 Public Workshops

19 Technical Meetings with GSAs

Board staff review of June and October 2024 Draft GSPs

Board staff review of November 2024 Final GSPs and Coordination Agreement



# GSP Revisions of Deficiencies





# 2024 Kaweah Subbasin Amended GSPs

State Water Board 2024 Draft Staff Report Deficiencies	Status
Groundwater Level (GL)-1: Undesirable Result Definition	Resolved
GL-2: Minimum Thresholds	Resolved
GL-3: Sustainable Management Criteria Relationships	Substantially Resolved
GL-4: Mitigation	Resolved
Land Subsidence (LS)-1: Undesirable Result Definition	Resolved
LS-2: Sustainable Management Criteria Relationships	Resolved
LS-3: Undesirable Results and Risk of Impacts	Resolved
Groundwater Quality (GWQ)-1: Undesirable Result Definition	Resolved
GWQ-2: Sustainable Management Criteria	Resolved
GWQ-3: Monitoring	Substantially Resolved
GWQ-4: Mitigation and Management Actions	Substantially Resolved
Interconnected Surface Water (ISW)-1: Impacts on Beneficial Uses and Users	Resolved
ISW-2: Minimum Thresholds	Partially Resolved
ISW-3: Monitoring	Resolved*

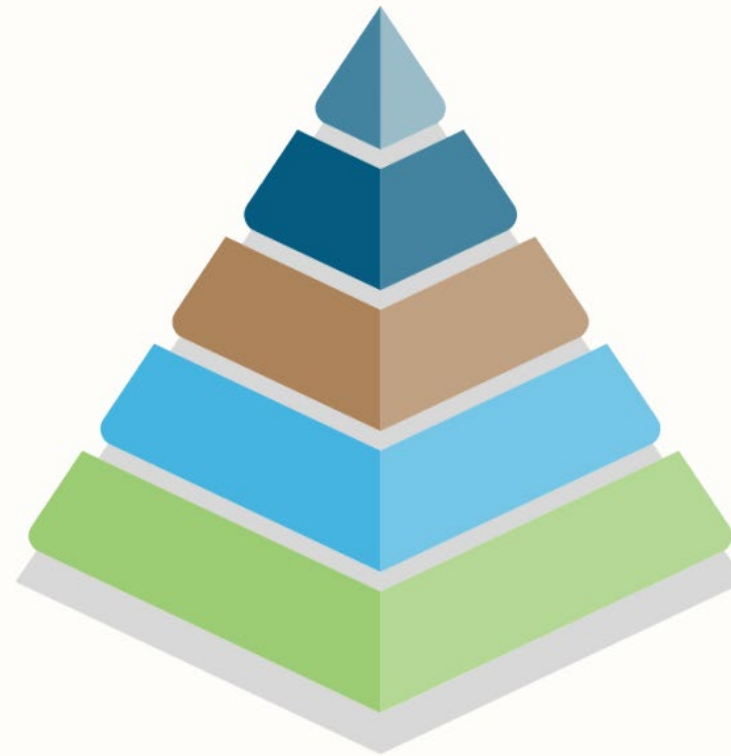
\*Resolved for the level of information currently available to the GSAs



# The GSAs amended their groundwater level sections to minimize impacts to drinking water users

- Revised undesirable result definition and minimum thresholds
- Dry well susceptibility analysis
- Operational flexibility
- Robust mitigation program

## Sustainable Management Criteria Priorities



- 01** Consistent with DWR/SWRCB Recommendations
- 02** Use of best available data and analytical tools
- 03** Consideration for all beneficial users, uses, and property interests
- 04** Stakeholder Support
- 05** Subbasin-wide Consistency





- 
- Kaweah Subbasin GSAs**
- Disadvantaged Communities**
- 2020-2040 Maximum Allowable Subsidence, in feet**
- |   |   |
|---|---|
| 1 | 2 |
| 3 | 4 |
| 5 | 6 |
| 7 | 8 |
- Subsidence Monitoring Network**
- Lower Aquifer GWL RMS
- City of Visalia, Fresno County Dept. PWP, California State Parks, Earth Tonton, Gardin, Safeway, MET/NASA, USGS, Bureau of Land Management, EPA, NPS, USDA, US Forest Service, NGAD/USGS, Porterville



# The GSAs included steps to stop active subsidence and mitigate for impacts

- Developed new sustainable management criteria (SMC) for the Friant-Kern Canal
- Updated subsidence model and groundwater level SMC to avoid subsidence in lower aquifer
- Added mitigation funding and support for critical infrastructure

**KAWEAH SUBBASIN  
MITIGATION PROGRAM VERSION 1.0  
TECHNICAL ASSISTANCE TRACK**

Available June 2024 for EKGSA      Available June 2025 for MKGSA & GKGSA

**WHO CAN SUBMIT A CLAIM?**

agricultural well owners      critical infrastructure owners      non-potable industrial well owners      other non-drinking water well owners

2024 Coordination Agreement, Appendix 6-2. Kaweah Subbasin Mitigation Program Version 1.0





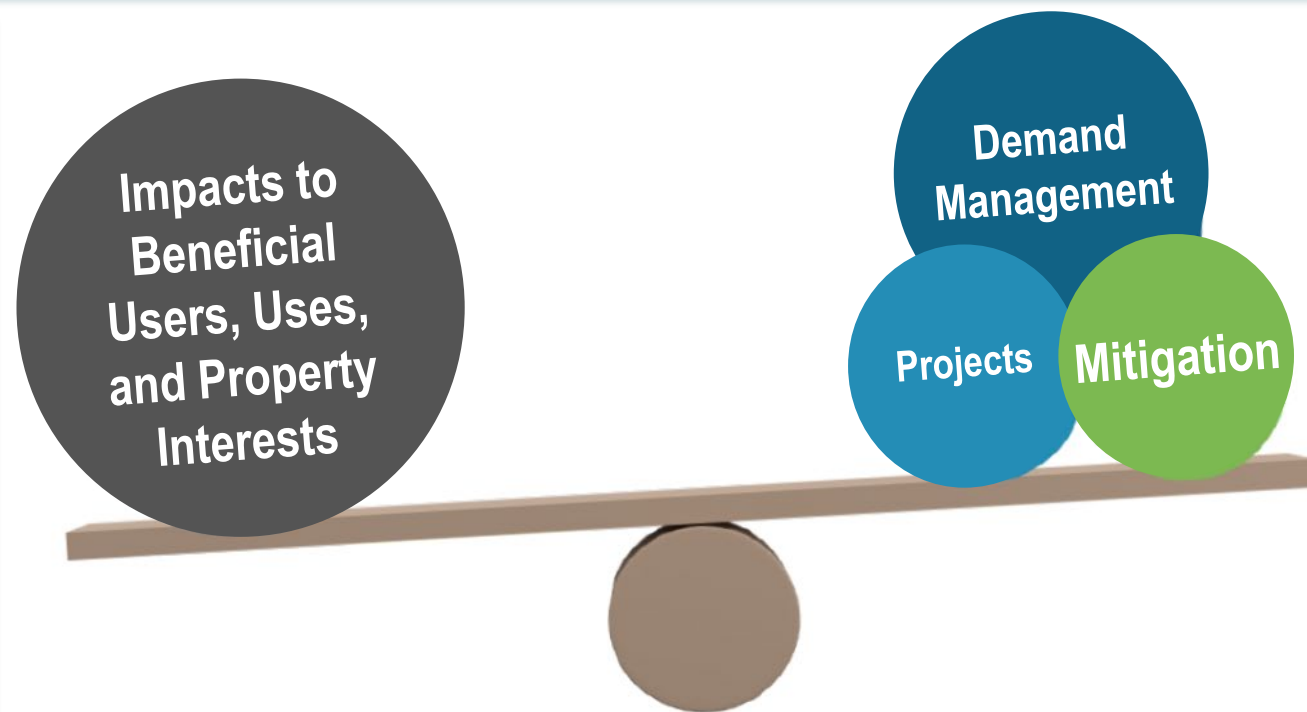
# The GSAs revised groundwater quality undesirable result definitions and sustainable management criteria

## Undesirable Result:

- (1) 10 separate RMS wells with exceedances due to groundwater management after January 1, 2015, OR
- (2) GSAs cannot meet mitigation demand for domestic wells

## Sustainable Management Criteria:

- Expanded list of constituents of concern
- Set minimum thresholds at drinking water standards (except for sodium and boron)



Modified after 2024 Coordination Agreement, Appendix 6-4: Degraded Water Quality SMC Technical Memorandum



# The GSPs still need revisions for groundwater quality monitoring and mitigation

## Improvements included:

- Developed Minimum Threshold Exceedance Policy and Well Registration Program
- Added mitigation for groundwater quality impacts

## Revisions needed:

- Fill monitoring data gaps

**KAWEAH SUBBASIN**

**MITIGATION PROGRAM** VERSION 1.0

Available  
June 2024

**DRINKING WATER WELL MITIGATION TRACK**

**WHO CAN SUBMIT A CLAIM?**

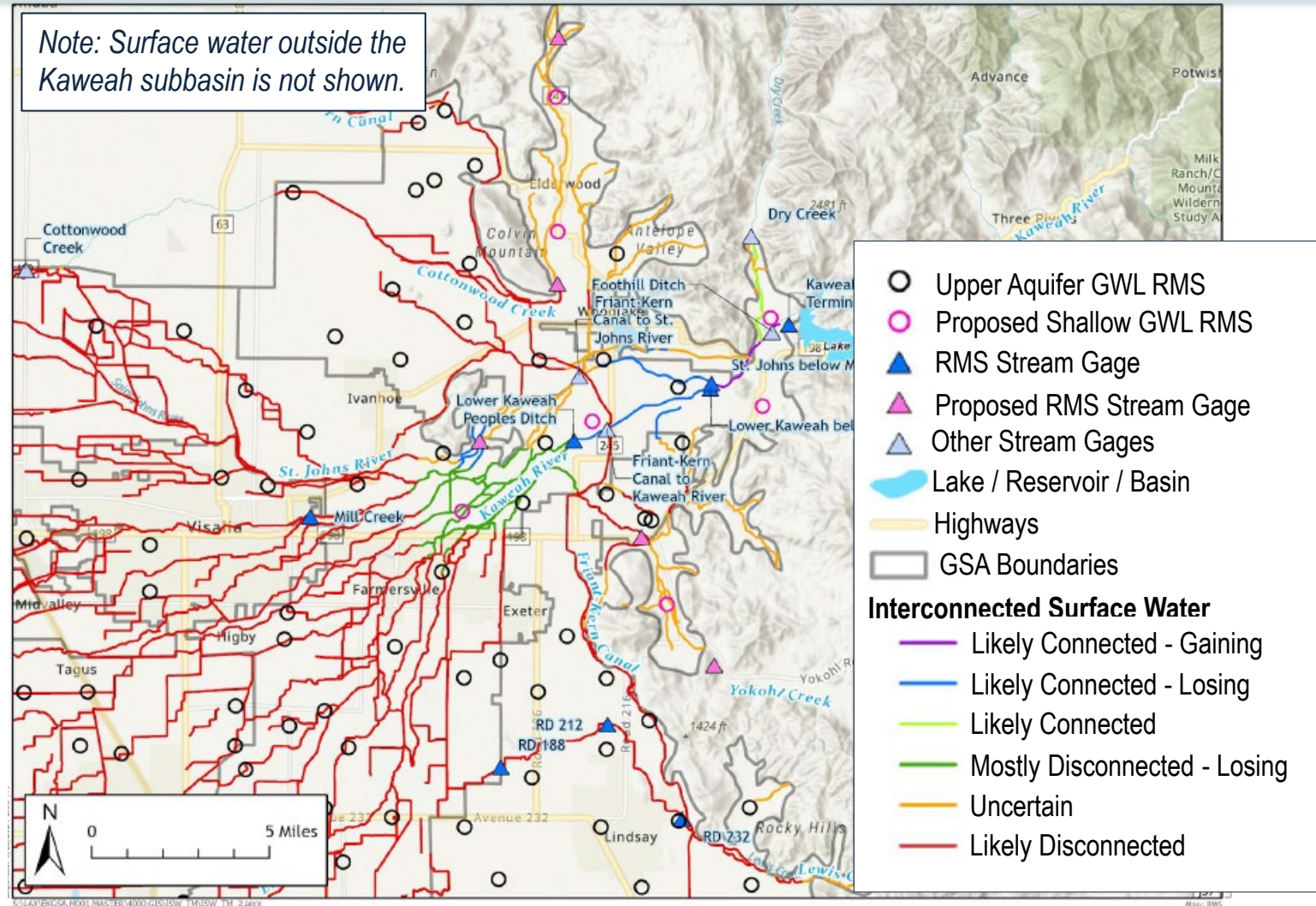


Modified after 2024 Coordination Agreement, Appendix 6-2. Kaweah Subbasin Mitigation Program Version 1.0



# The GSAs used monitoring data to refine pumping effects on interconnected surface water

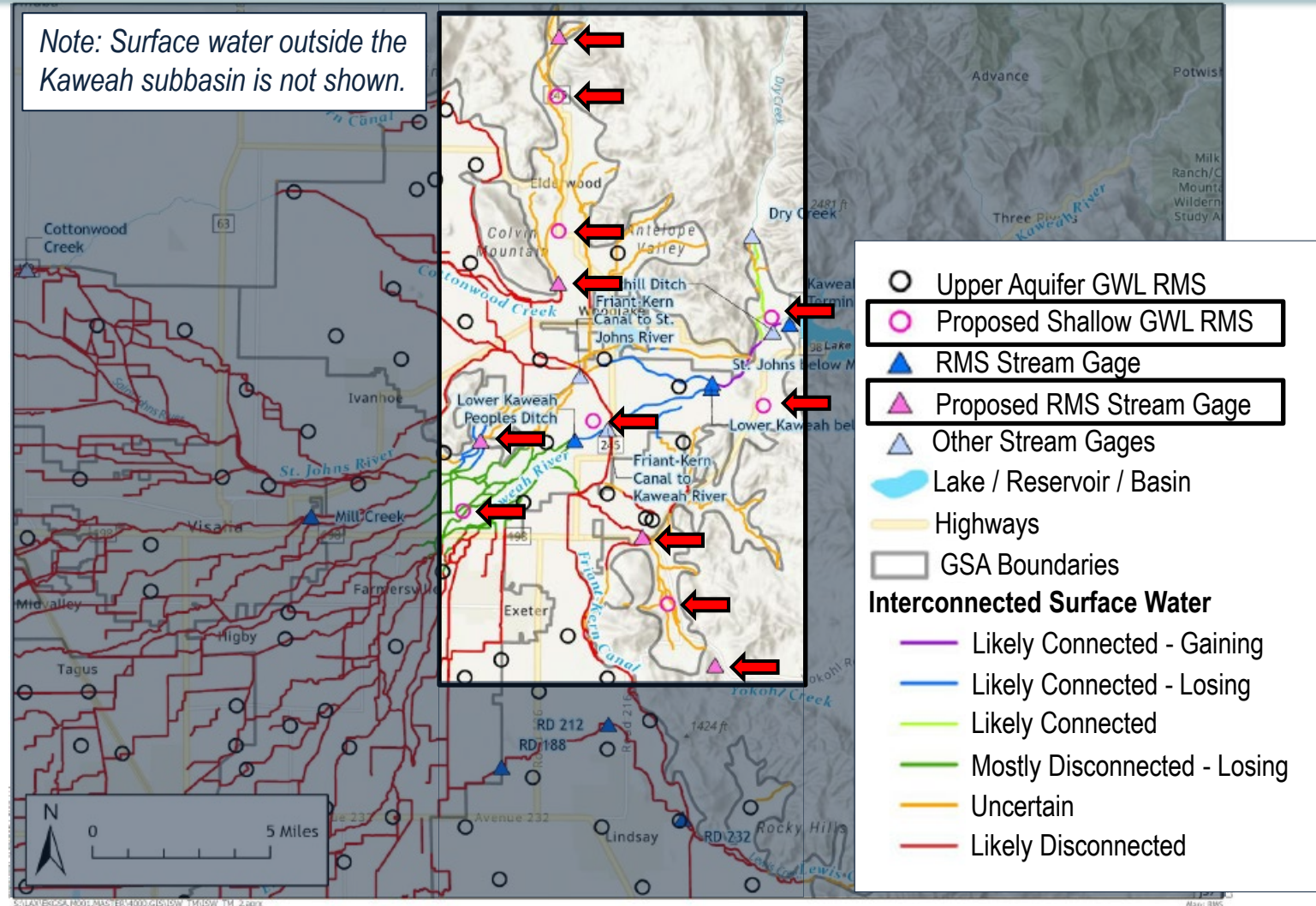
- Refined understanding of beneficial uses and users of interconnected surface water
- Established monitoring network and frequency
- Developed ISW Data Gap Work Plan that identified future monitoring site locations



# The GSPs should be revised as GSAs fill interconnected surface water data gaps

The GSAs set preliminary minimum thresholds that considered impacts to beneficial uses/users.

- Further development of model to estimate depletions
- Implementation of Data Gap Work Plan and future DWR guidance





# Spotlight: Mitigation



Image source: <https://ekgsa.org/2024-state-of-the-kaweah-subbasin/>



# Staff Recommendations for the Kaweah Subbasin







The Staff Assessment was released for public comment on October 13<sup>th</sup>.

Public comments were due on November 12<sup>th</sup>.



**Further define  
sustainability indicator  
relationships**



**Clarify land subsidence  
technical and funding  
assistance**



**Update groundwater quality  
monitoring network**

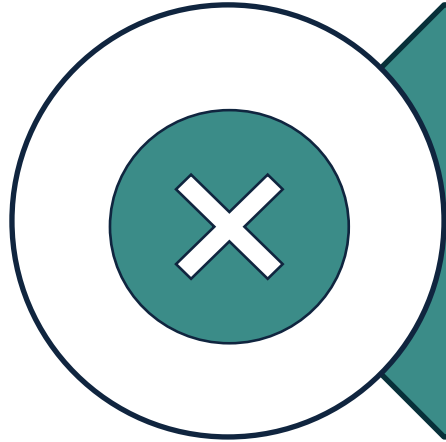


**Revise interconnected  
surfaced water minimum  
thresholds**





# Staff Recommendations for Board Action



Probationary  
designation not  
warranted



Return Kaweah  
Subbasin to DWR's  
jurisdiction

# Office of Sustainable Groundwater Management

[SGMA@waterboards.ca.gov](mailto:SGMA@waterboards.ca.gov)

[www.waterboards.ca.gov/sgma](http://www.waterboards.ca.gov/sgma)

