

Minimal Impact Exclusion: Tule Subbasin

Proposed Resolution

April 7, 2026

Item No. 4



Office of Sustainable Groundwater Management

Presentation Overview



Brief background on the Tule Subbasin



Development of the Minimal Impact Exclusion



Comments received



Staff Recommendation to the Board

Tule Subbasin

Notable Dates

September 2024 - Designated Probationary

May 2026 – Reporting Due

Governance



13 Groundwater
Sustainability Agencies



9 Groundwater
Sustainability Plans (2026)



Groundwater Use

Sustainable Yield of the GSP – 408,000 Acre-Feet per Year (AFY, 2040-2070)

Groundwater Extractions – ~719,300 AFY (WY 2022)

Overdraft - ~311,300 AFY (WY 2022)

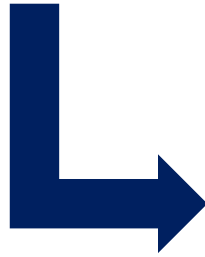
Source: 2024 GSPs; Tule Subbasin Annual Reports Water Year 2022

Staff heard requests for relief for smaller-volume pumpers during public engagement



Challenges facing small farms

- Limited broadband access
- Linguistic isolation
- Probationary fees



Consultation with Subject Matter Experts

Board staff engaged with NGOs and other experts to better understand challenges faced by small-scale extractors



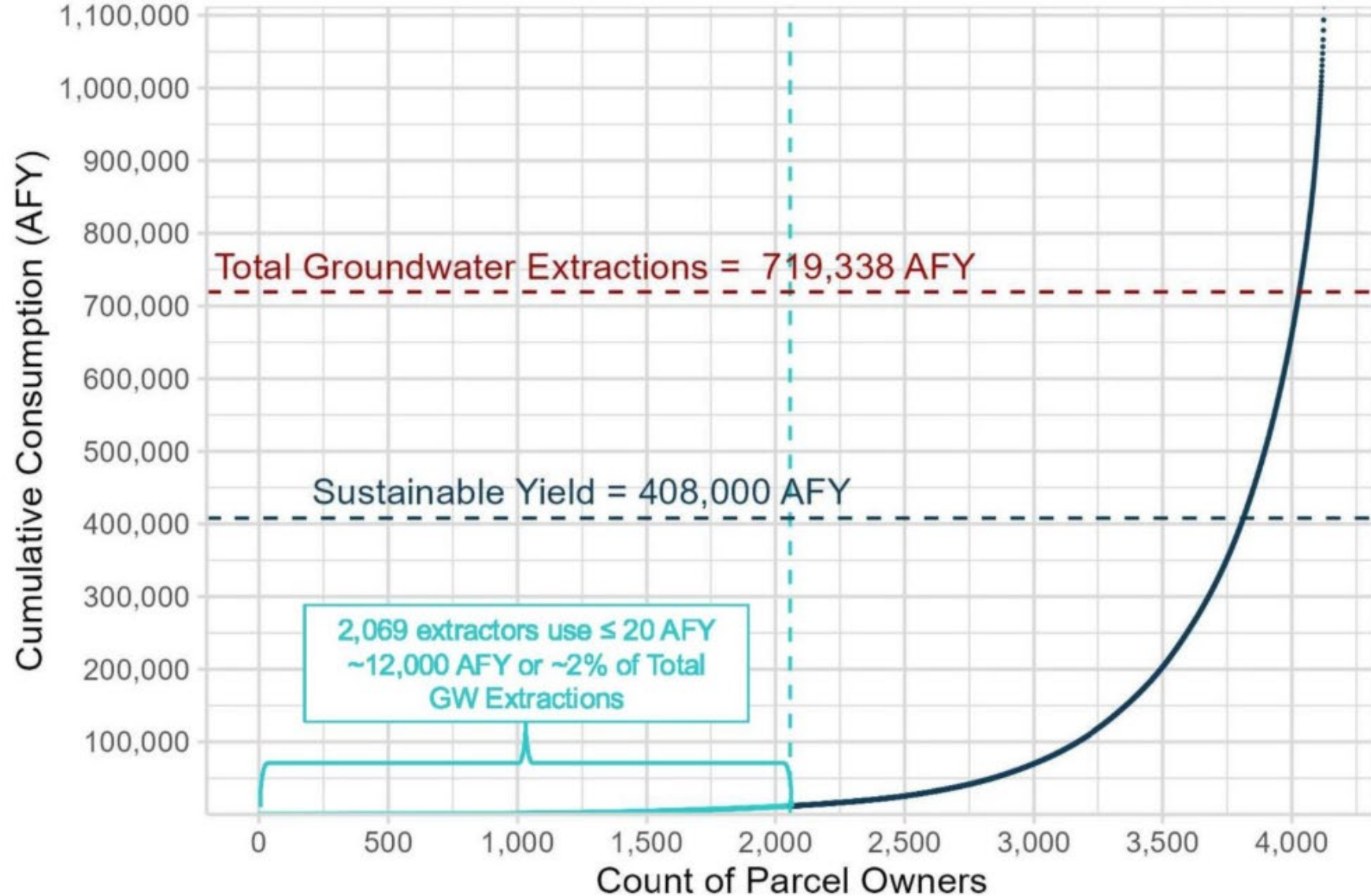
Board Staff Assessment

Assessed scope and potential impact of excluding certain extractors from reporting and fees

Approximately 2,000 pumpers use less than 2% of the total groundwater extracted.

Those within 2 miles of the Friant-Kern Canal are not included.

Cumulative Water Consumption (AFY) by Parcel Owner Ordered by Lowest to Greatest Water Consumption



Pumpers Who May Be Excluded (Estimate)

Lower Tule

94 pumpers, 0.3% of area,
0.2% of water use

Pixley

231 pumpers, 1.1% of
area, 0.6% of water use

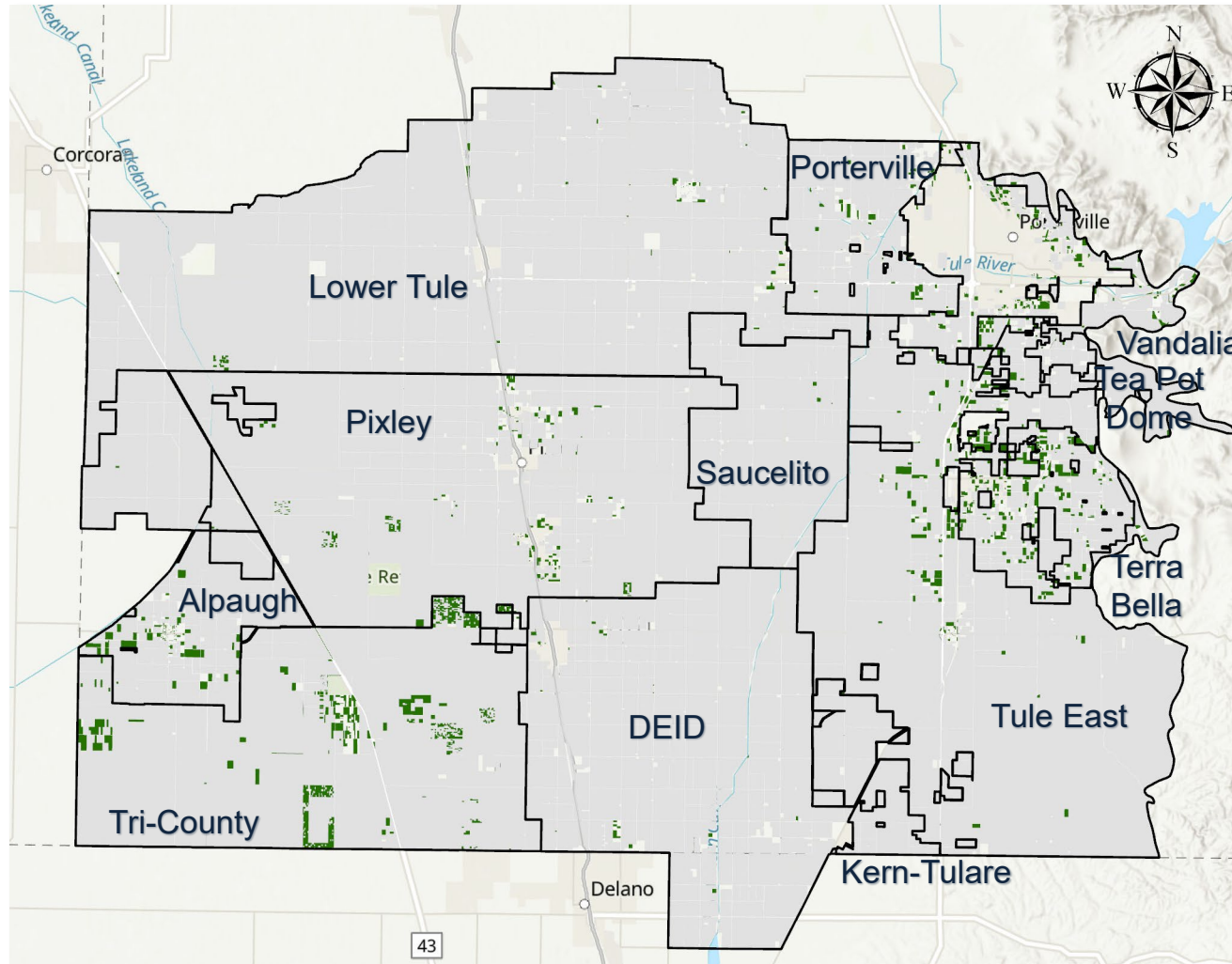
Alpaugh

162 pumpers, 5.5% of
area, 3.0% of water use

Tri-County

809 pumpers, 4.0% of
area, 1.9% of water use

Green parcels = parcel
owner uses less than 20
acre-feet per year (total
across all parcels) as
measured by remote-
sensed evapotranspiration



Porterville

56 pumpers, 2.1% of area,
1.4% of water use

Tea Pot Dome

45 pumpers, 4.6% of area,
3.7% of water use

Vandalia

10 pumpers, 1.5% of area,
1.3% of water use

Saucelito

6 pumpers, 0.1% of area,
0.1% of water use

Terra Bella

267 pumpers, 14% of area,
10% of water use

Tule East

499 pumpers, 3% of area,
2.3% of water use

Extractors who pump 20 AFY or less have a minimal impact on subbasin groundwater withdrawals, unless located within 2 miles of the Friant-Kern Canal

In the Tule Subbasin, 98% of groundwater pumping would be reported.

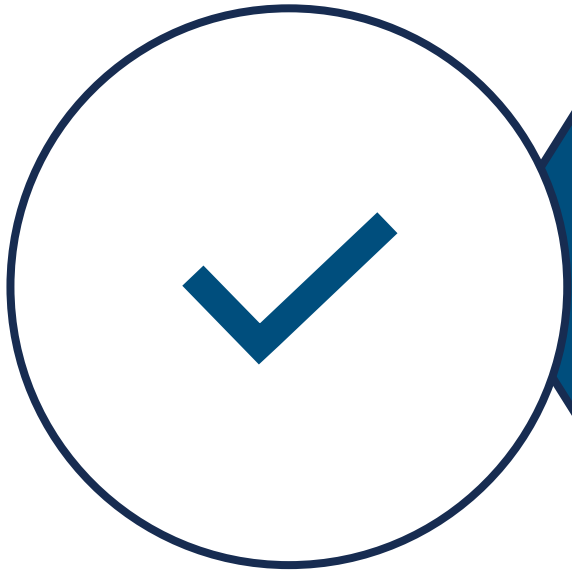


The Resolution was released for public comment on February 27th.

Public comments were due on March 30th.



Staff Recommendation to the Board



Adopt the Minimal Impact Exclusion

- Exclude extractors who pump 20 AFY or less in the Tule subbasin unless within 2 miles of the Friant-Kern Canal.
 - Over 2,000 expected reporters are eligible
 - 98% of extractions still required to report

Office of Sustainable Groundwater Management

SGMA@waterboards.ca.gov

www.waterboards.ca.gov/sgma

