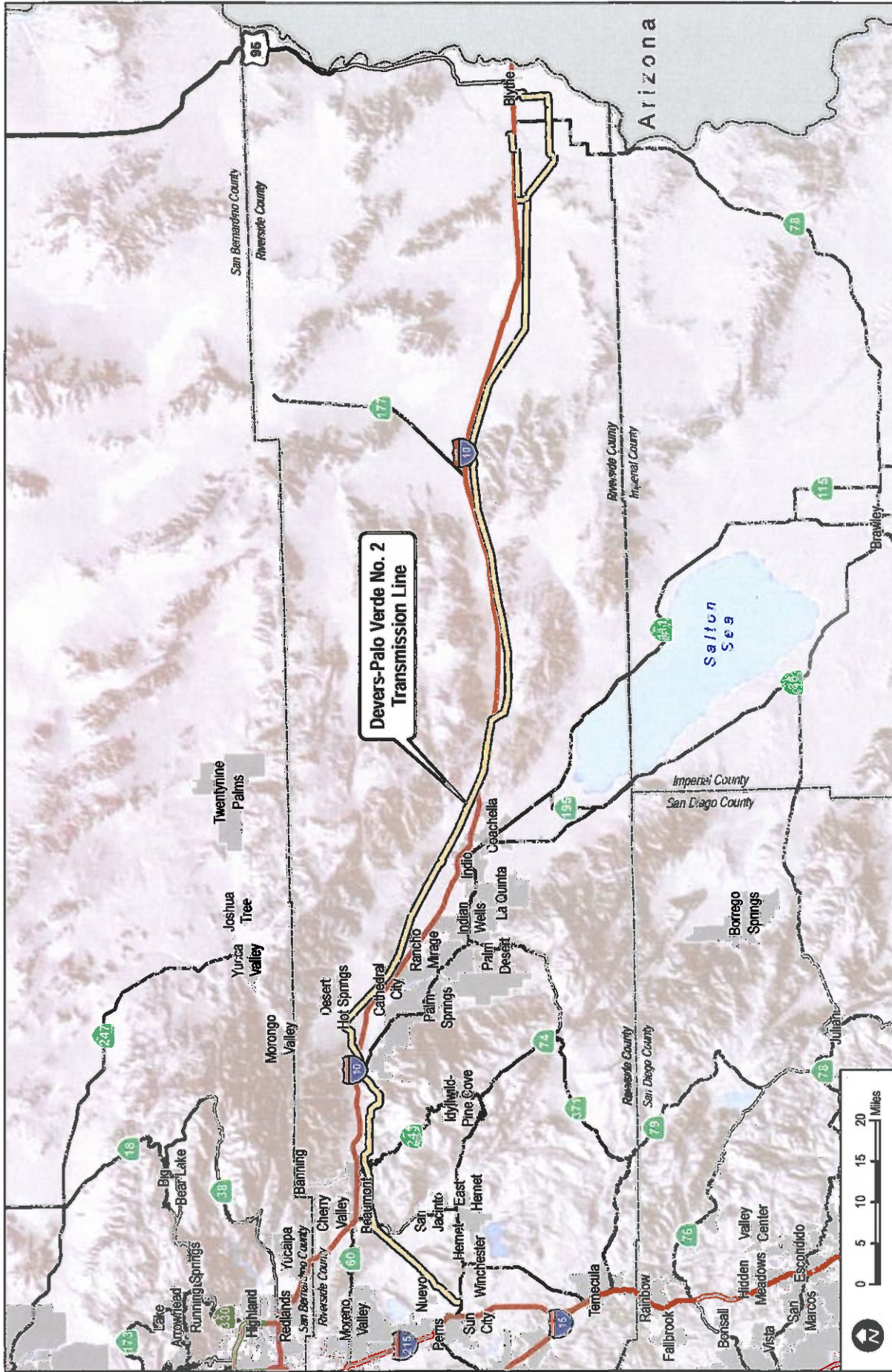


Attachment D

MAPS

(Provided by Southern California Edison and Dudek)

- **Regional maps of Devers Palo Verde No. 2**
- **Some representative maps showing project impacts to waters under the jurisdiction of the State and Regional Water Boards, the U.S. Army Corps of Engineers, and the California Department of Fish and Game**



**Devers-Palo Verde No. 2
Transmission Line**



FIGURE 1
Regional Map

AGENCY DRAFT

Devers Palo Verde No. 2 - Attachment D

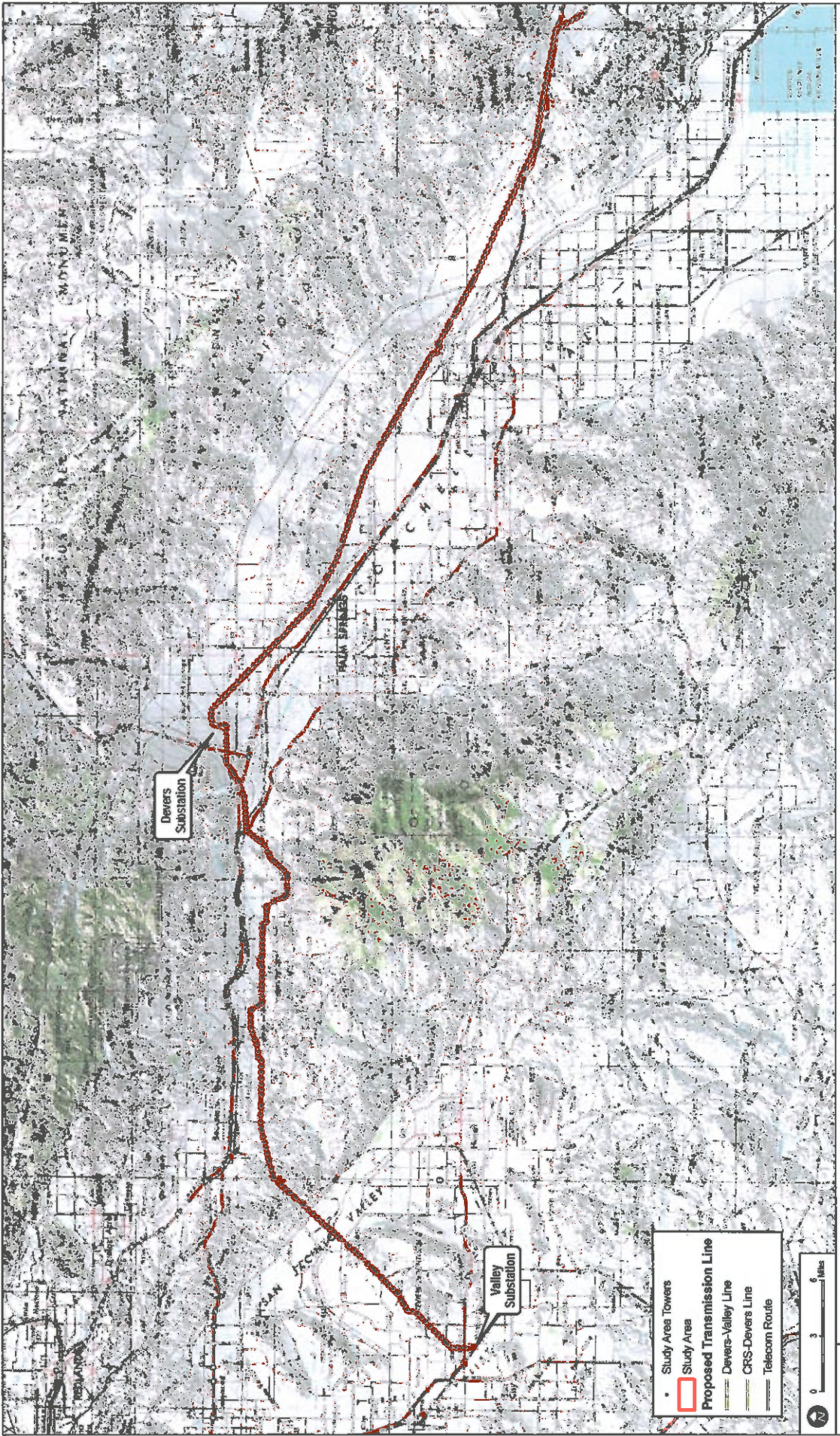


FIGURE 2a

Jurisdictional Determination Study Area

AGC 2017.01.17

Devers Palo Verde No. 2 - Attachment D

SOURCE: ERM, AECOM, Topo, 10/20/16

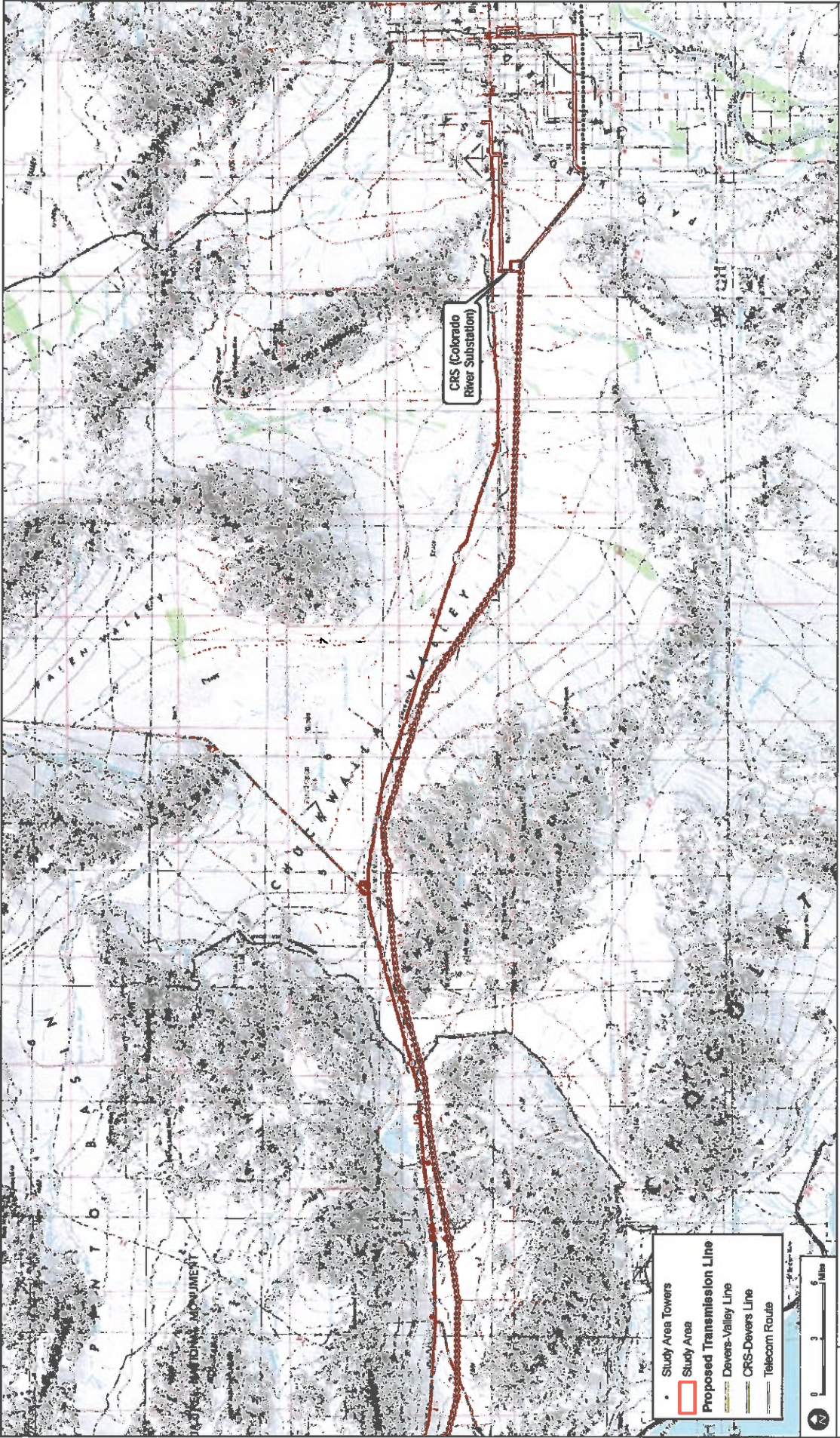


FIGURE 2b

Jurisdictional Determination Study Area

AGENCY DRAWING

Devers Palo Verde No. 2 - Attachment D

SOURCE: ERI FACSIS Online Topographic Map Service

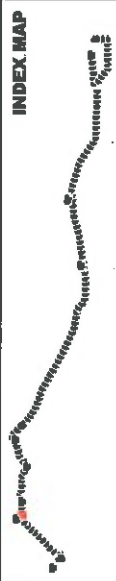
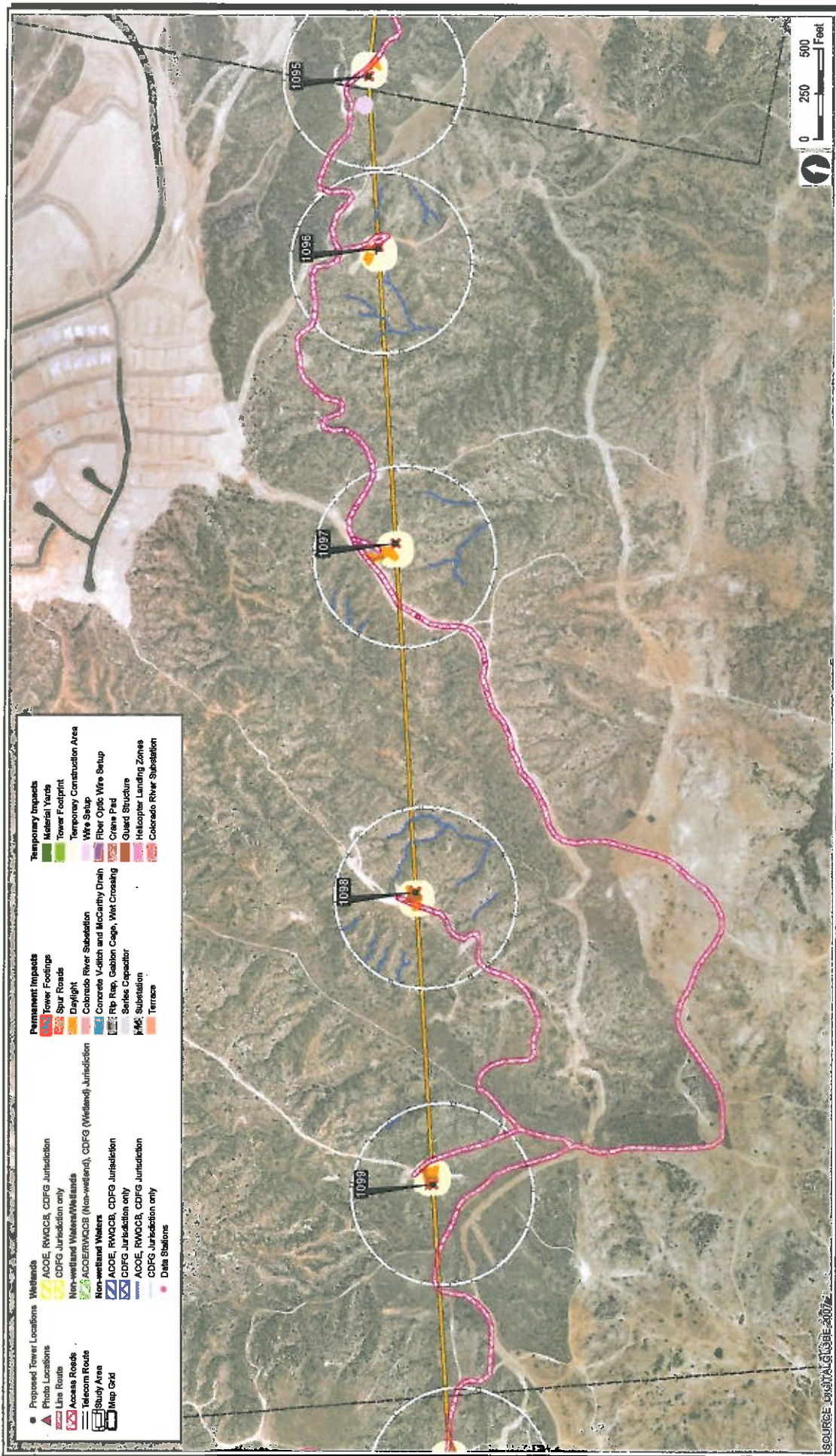
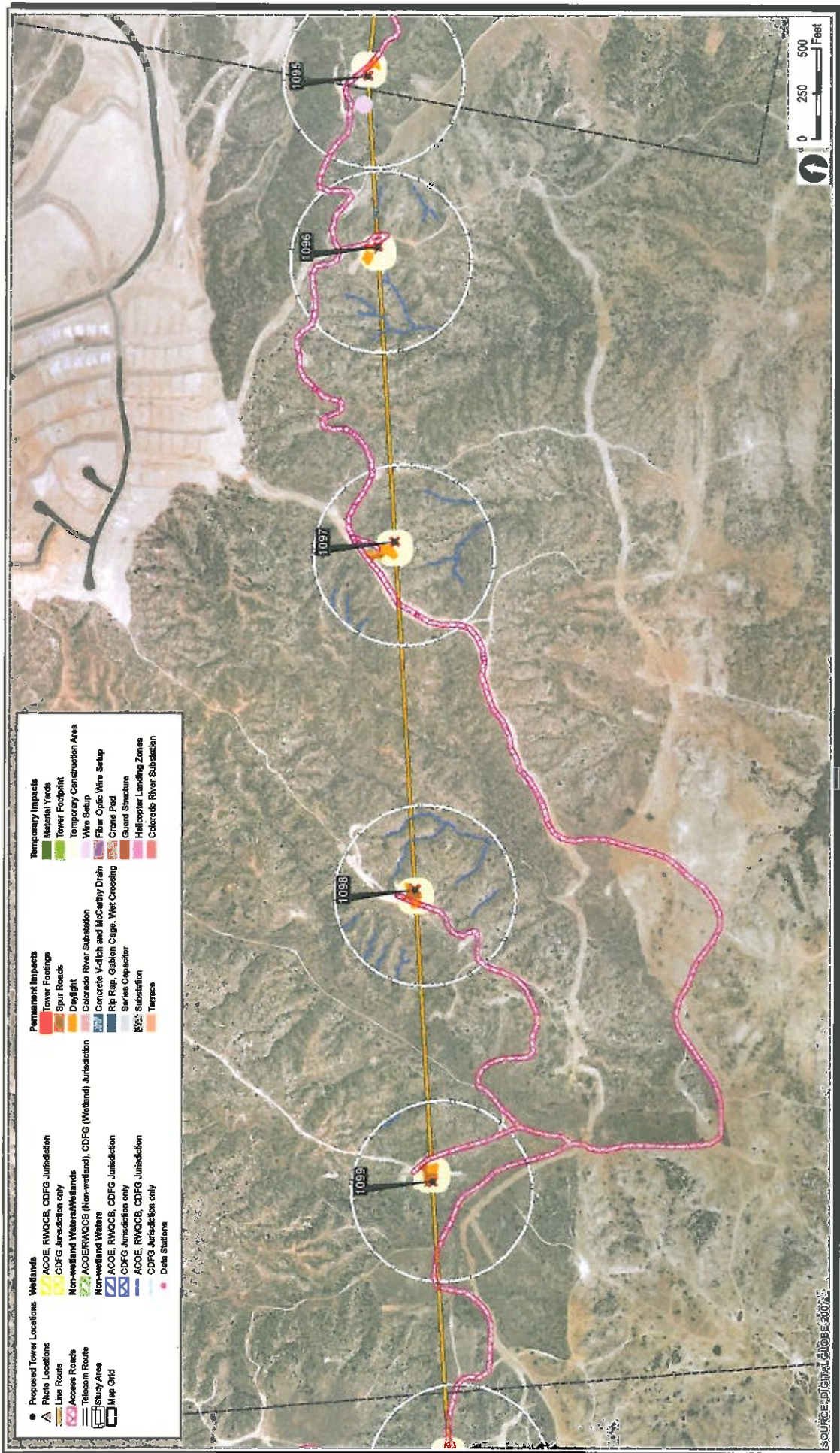


FIGURE 3

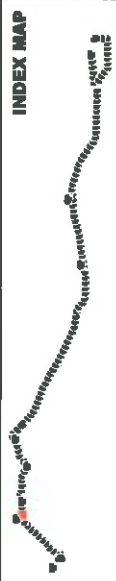
**Devers to Palo Verde II Line
Representative Map of Impacts to Waters under the Water Board, ACOE, and CDFG Jurisdictions
Attachment D**



- | Proposed Tower Locations | | Wetlands | | Permanent Impacts | | Temporary Impacts | |
|--------------------------|--------------------------|---|-----------------------------|-------------------------------------|-------------------------------------|-----------------------------|-----------------------------|
| ● | Proposed Tower Locations | ACOE, RWQCB, CDFG Jurisdiction | Wetland | Tower Footings | Tower Footings | Material Yards | Material Yards |
| ▲ | Photo Locations | CDFG Jurisdiction only | Non-wetland Waters/Wetlands | Spur Roads | Spur Roads | Temporary Footprint | Temporary Footprint |
| — | Line Routes | ACOE/RWQCB (Non-wetland), CDFG (Wetland) Jurisdiction | Non-wetland Wetlands | Daylight | Daylight | Temporary Construction Area | Temporary Construction Area |
| — | Access Roads | ACOE, RWQCB, CDFG Jurisdiction | Wetland Wetlands | Concrete V-ditch and McCauley Drain | Concrete V-ditch and McCauley Drain | Wire Spun | Wire Spun |
| — | Telecom Routes | CDFG Jurisdiction only | Wetland Wetlands | Rip Rip, Gabion Cage, Wet Crossing | Rip Rip, Gabion Cage, Wet Crossing | Fiber Optic Wire Setup | Fiber Optic Wire Setup |
| — | Study Area | ACOE, RWQCB, CDFG Jurisdiction | Wetland Wetlands | Series Capacitor | Series Capacitor | Crane Pad | Crane Pad |
| — | Map Grid | ACOE, RWQCB, CDFG Jurisdiction | Wetland Wetlands | Substation | Substation | Guard Structure | Guard Structure |
| | | CDFG Jurisdiction only | Wetland Wetlands | Terrace | Terrace | Helicopter Landing Zones | Helicopter Landing Zones |
| | | | Wetland Wetlands | | | Colorado River Substation | Colorado River Substation |
| | | | Wetland Wetlands | | | | |

FIGURE 4

**Devers to Palo Verde II Line
Representative Map of Impacts to Waters under the Water Board, ACOE, and CDFG Jurisdictions
Attachment D**



Source: Volterra Global, 2017

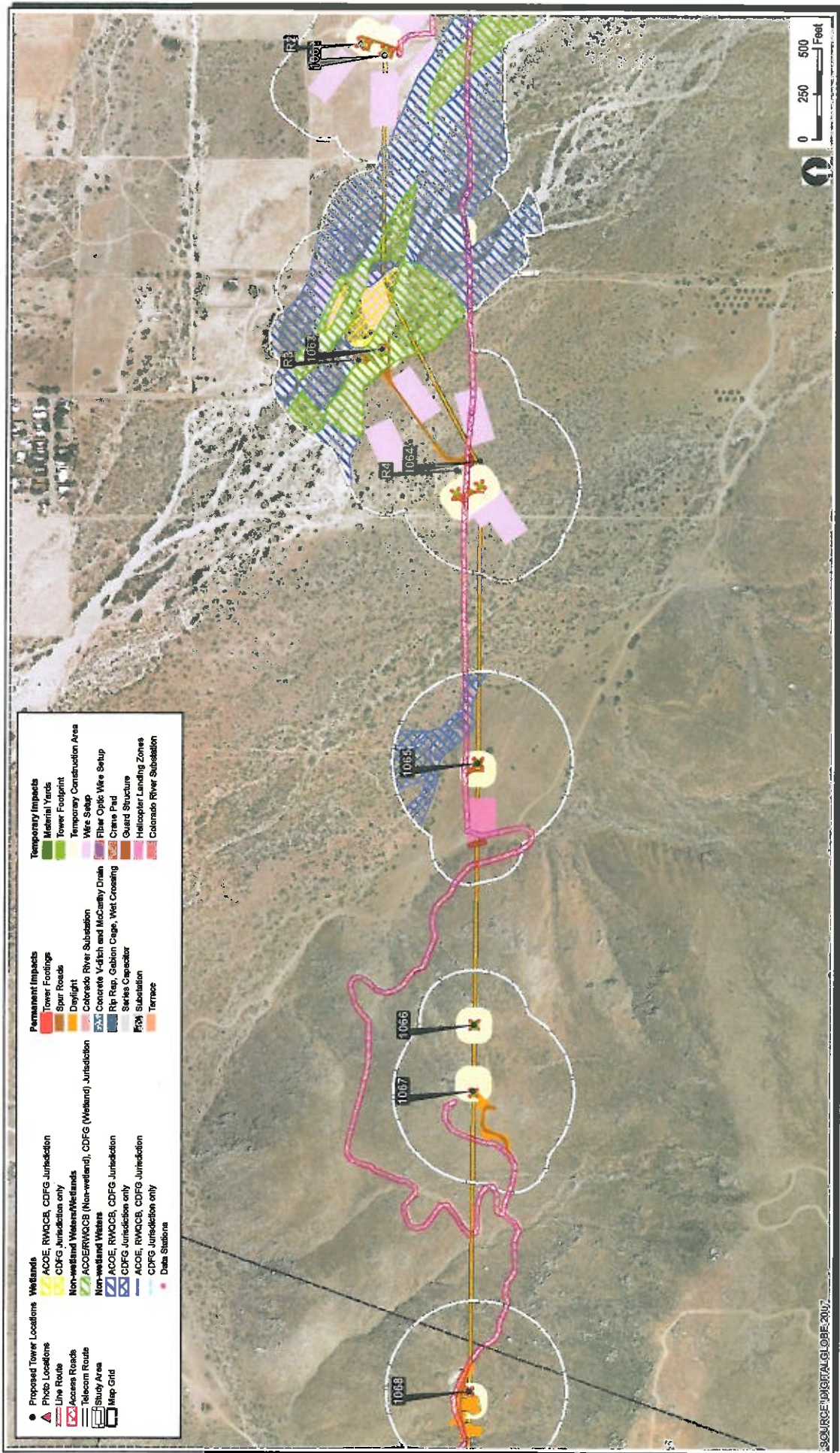
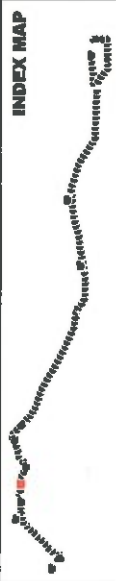


FIGURE 5

Devers to Palo Verde II Line
 Representative Map of Impacts to Waters under the Water Board, ACOE, and CDFG Jurisdictions
 Attachment D

- | | | | |
|---|--|---|--|
| <ul style="list-style-type: none"> ● Proposed Tower Locations ▲ Photo Locations — Live Route — Access Roads — Telecom Routes — Study Area — Map Grid | <ul style="list-style-type: none"> Wetlands ACOE, RWQCB, CDFG Jurisdiction CDFG Jurisdiction only Non-wetland Waters/Wetlands ACOE/RWQCB (Non-wetland), CDFG (Wetland) Jurisdiction Non-wetland Waters ACOE, RWQCB, CDFG Jurisdiction ACOE, RWQCB, CDFG Jurisdiction only CDFG Jurisdiction only Data Stations | <ul style="list-style-type: none"> Permanent Impacts Tower Footings Spor Roads Daylight Concrete Y-itch and McCoolly Drain Rip Rap, Gabion Cage, Wet Crossing Series Capacitor Flow Substation Terrace | <ul style="list-style-type: none"> Temporary Impacts Material Yards Tower Footprint Temporary Construction Area Wire Strip Fiber Optic Wire Setup Crane Pad Guard Structure Helicopter Landing Zones Colorado River Substation |
|---|--|---|--|

SOURCE: DIGITAL GLOBE, 2017



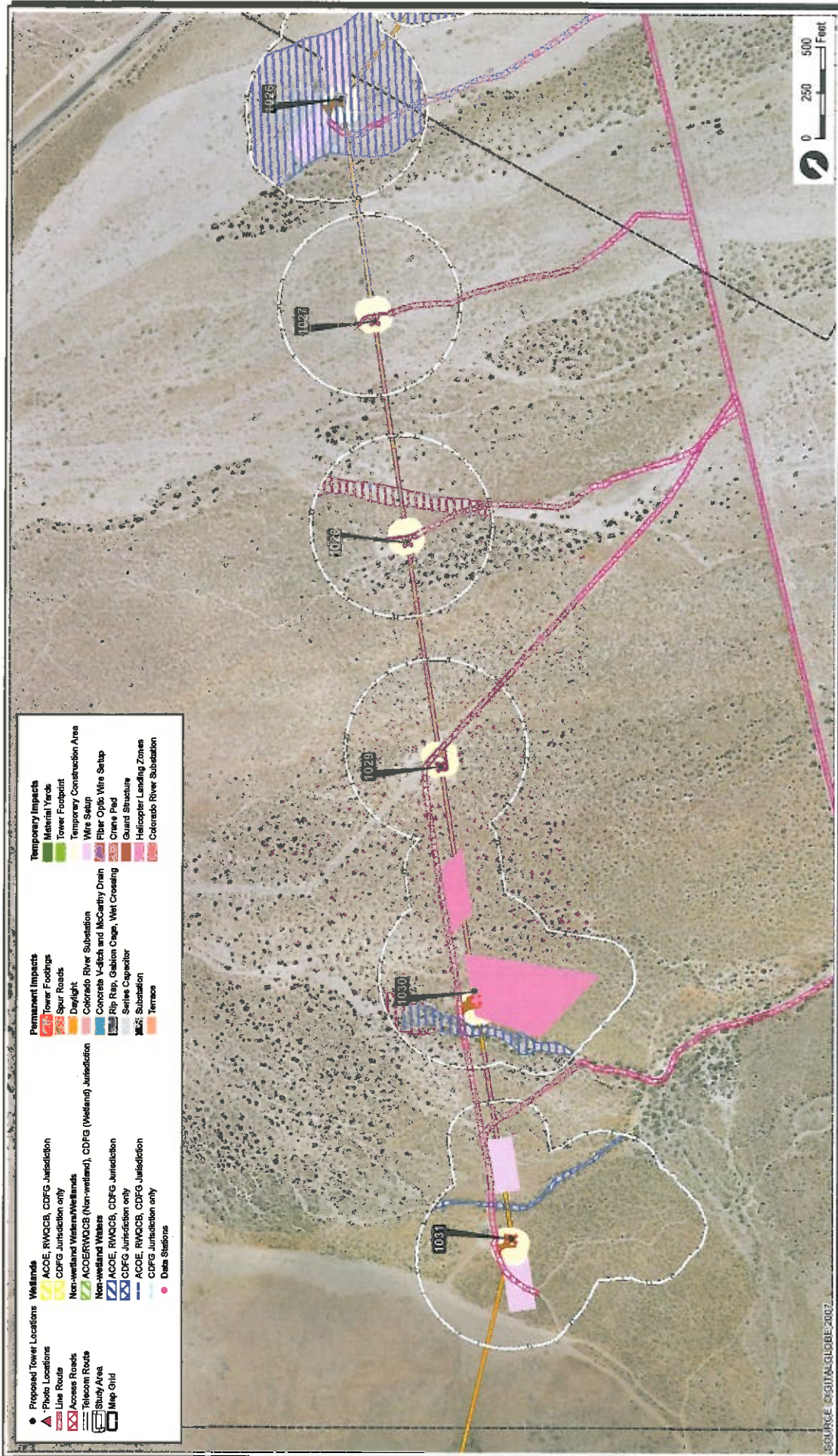


FIGURE 6

Devers to Palo Verde II Line
 Representative Map of Impacts to Waters under the Water Board, ACOE, and CDFG Jurisdictions
 Attachment D



- Proposed Tower Locations
- ▲ Photo Locations
- Line Routes
- Access Roads
- Telecom Routes
- Study Area
- Map Grid
- Wellfields
 - ACOE, RWQCB, CDFG Jurisdiction
 - CDFG Jurisdiction only
 - Non-wetland Wetlands
 - ACQER/WQCB (Non-wetland), CDFG (Wetland) Jurisdiction
 - Non-wetland Wetlands
 - ACOE, RWQCB, CDFG Jurisdiction
 - CDFG Jurisdiction only
 - ACOE, RWQCB, CDFG Jurisdiction
 - CDFG Jurisdiction only
- Tower Locations
 - 1031
 - 1030
 - 1029
 - 1028
 - 1027
 - 1026
- Permanent Impacts
 - Lower Floodings
 - Spur Roads
 - Daylight
 - Colorado River Substation
 - Concrete Y-itch and McCarty Drain
 - Rip Rip, Gabion Cage, Wet Crossing
 - Series Capacitor
 - Substation
 - Terrace
- Temporary Impacts
 - Material Yards
 - Tower Footprint
 - Temporary Construction Area
 - Wire Setup
 - Pillar Optic-Wire Setup
 - Crane Pad
 - Guard Structure
 - Helicopter Landing Zones
 - Colorado River Substation

SOURCE: DIGITALGLOBE 2017

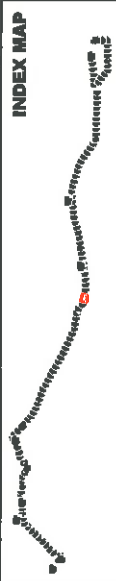
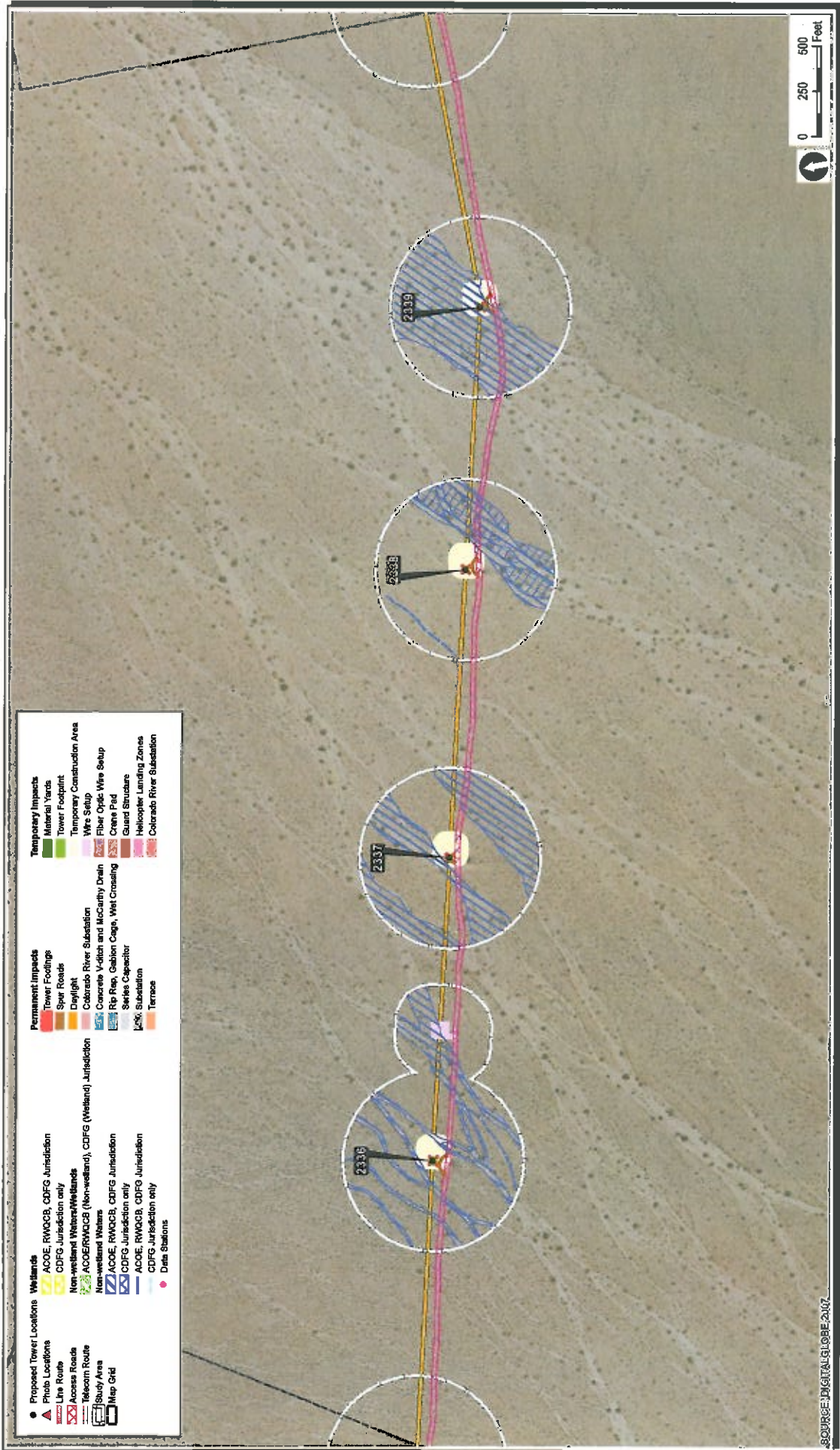
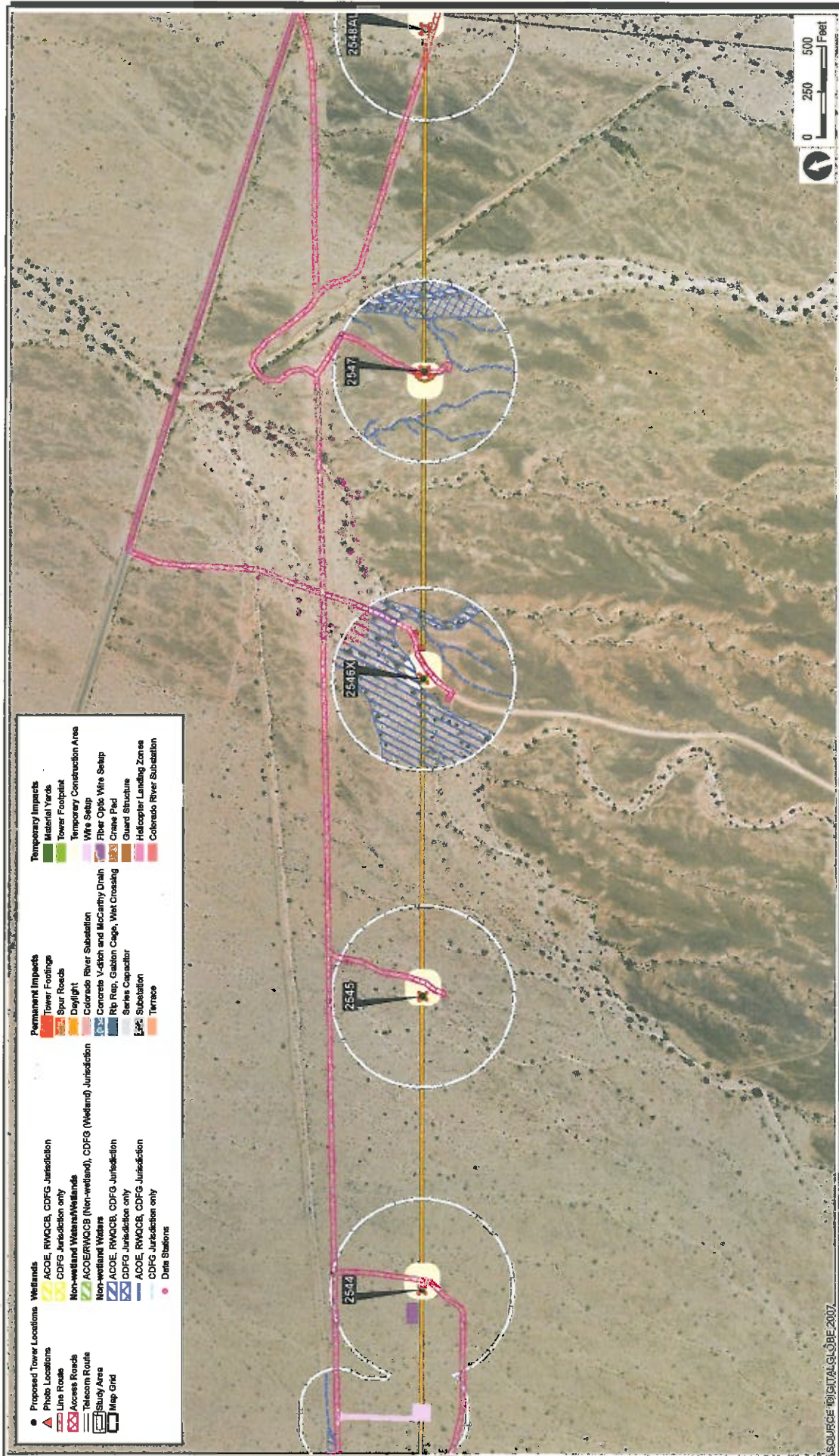


FIGURE 7

**Devers to Palo Verde II Line
Representative Map of Impacts to Waters under the Water Board, ACOE, and CDFG Jurisdictions
Attachment D**



- | | | | |
|--|---|--|--|
| <ul style="list-style-type: none"> Proposed Tower Locations Photo Locations Line Route Access Roads Telecom Route Study Area Map Grid | <ul style="list-style-type: none"> Wetlands ACOE, RMQCB, CDFG Jurisdiction CDFG Jurisdiction only Non-wetland Waters/Wetlands ACOE/RMQCB (Non-wetland), CDFG (Wetland) Jurisdiction Non-wetland Waters ACOE, RMQCB, CDFG Jurisdiction CDFG Jurisdiction only ACOE, RMQCB, CDFG Jurisdiction CDFG Jurisdiction only Data Stations | <ul style="list-style-type: none"> Permanent Impacts Tower Footings Shore Roads Daylight Colorado River Substation Concrete V-batch and Locality Drain Rip Rap, Gabion Clogs, Wet Crossing Series Capacitor Substation Terrace | <ul style="list-style-type: none"> Temporary Impacts Material Yards Tower Footprint Temporary Construction Area Wire Setup Fliter Optic Wires Setup Crane Pad Guard Structure Helicopter Landing Zones Colorado River Substation |
|--|---|--|--|

FIGURE 8

Devers to Palo Verde II Line
 Representative Map of Impacts to Waters under the Water Board, ACOE, and CDFG Jurisdictions
 Attachment D



SOURCE: DIGITAL GLOBE 2007.