

Attachment D

Maps

(Provided by Southern California Edison and Dudek)

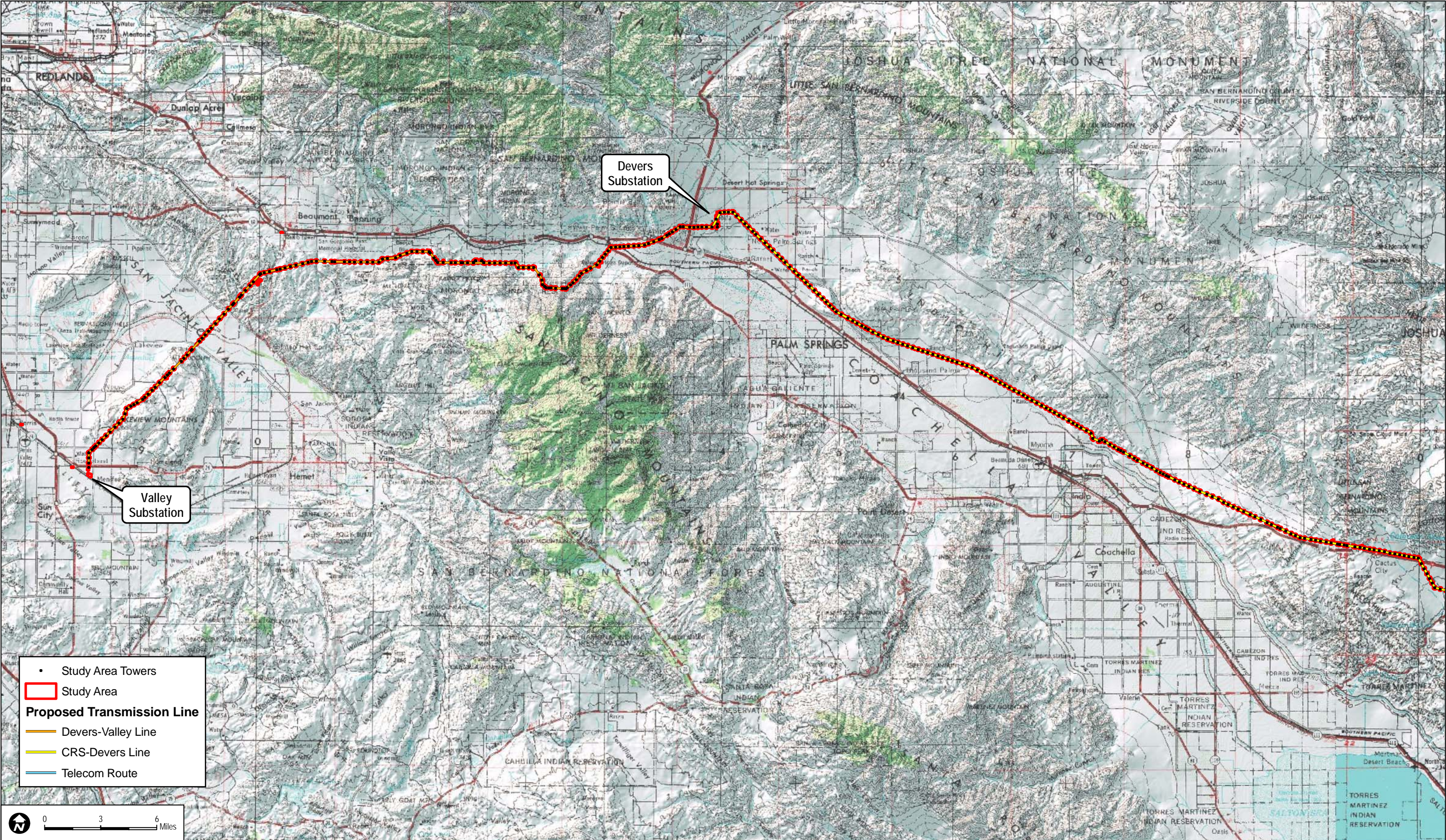
- Regional maps of Devers Palo Verde No. 2
- Some representative maps showing project impacts to waters under the jurisdiction of the State and Regional Water Boards, the U.S. Army Corps of Engineers, and the California Department of Fish and Wildlife



Devers Palo Verde No. 2 - Attachment D

**FIGURE 1
Regional Map**

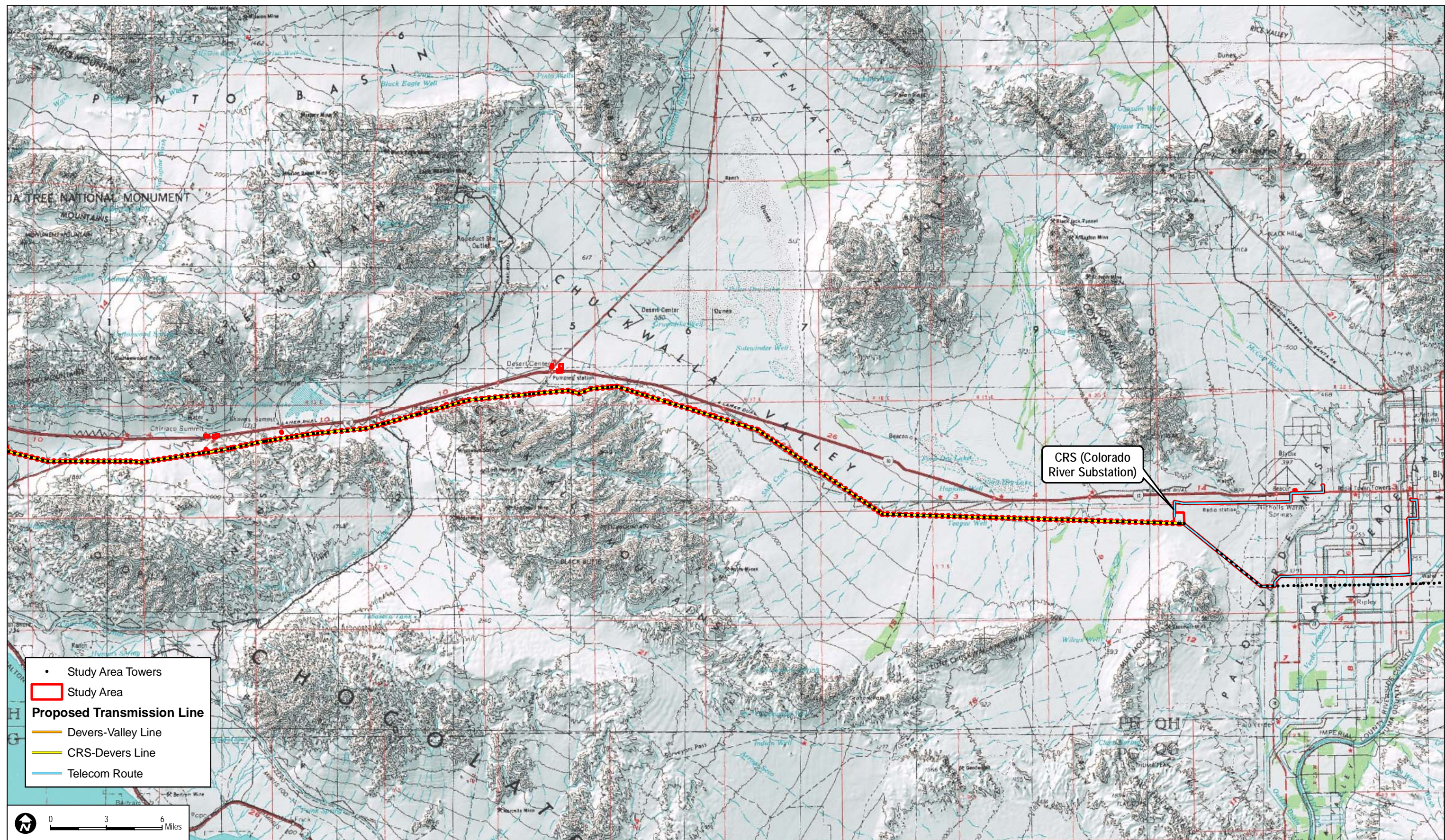
AGENCY DRAFT



SOURCE: ESRI ArcGIS Online Topographic Map Service

Devers Palo Verde No. 2 - Attachment D

FIGURE 2a
Jurisdictional Determination Study Area

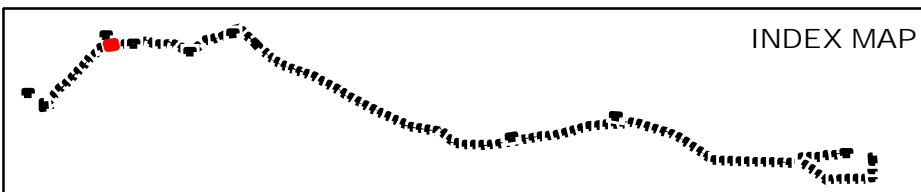
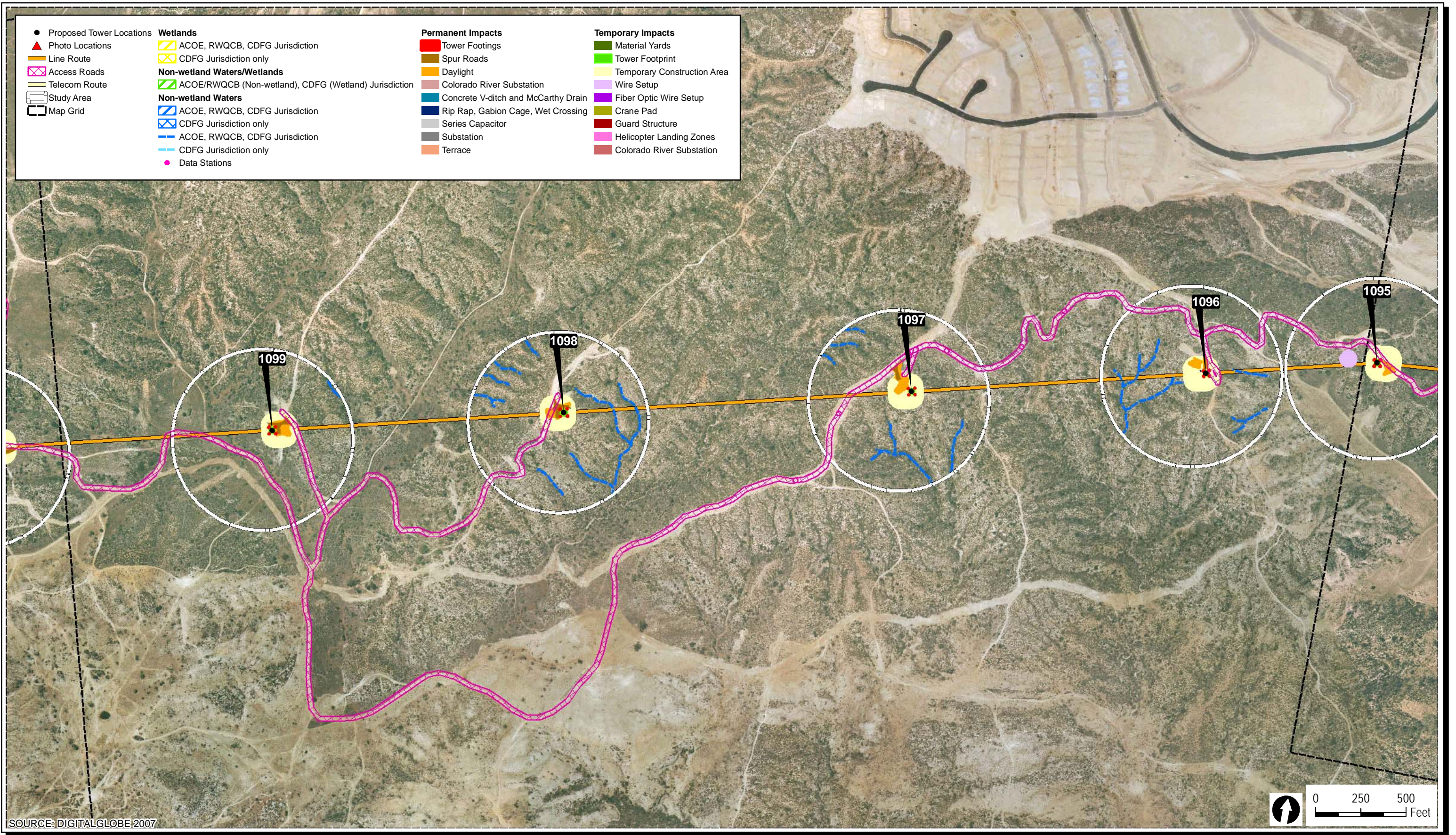


SOURCE: ESRI ArcGIS Online Topographic Map Service

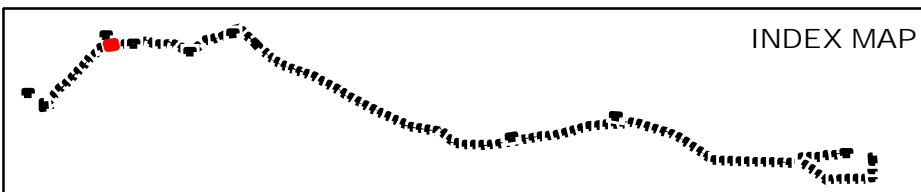
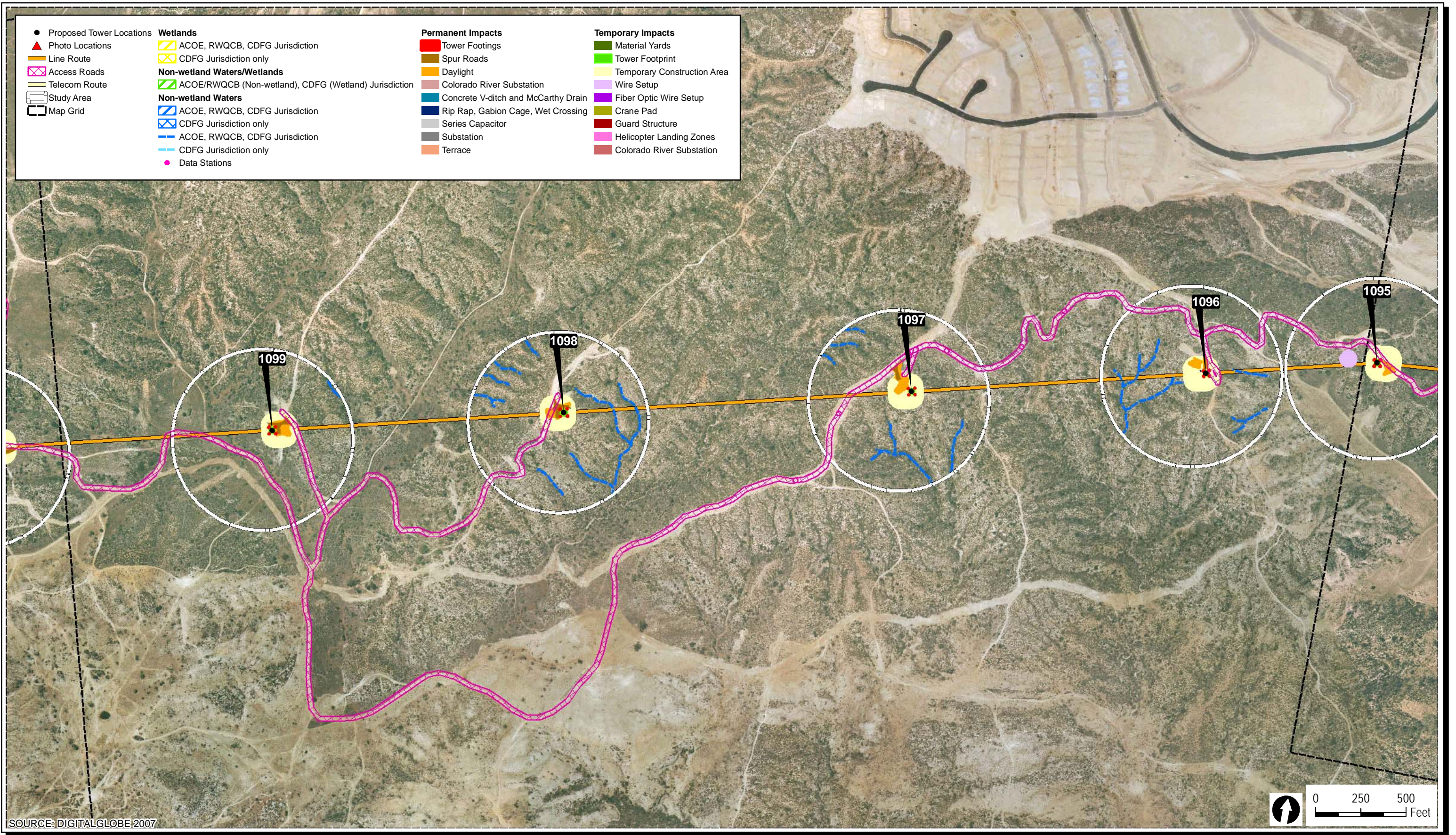
Devers Palo Verde No. 2 - Attachment D

FIGURE 2b
Jurisdictional Determination Study Area

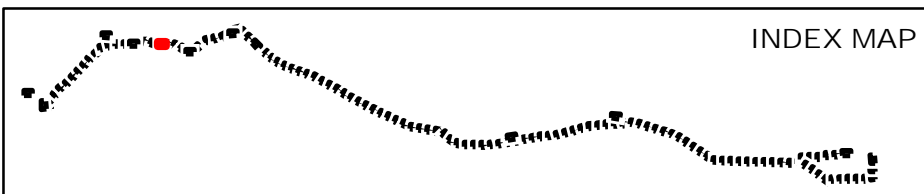
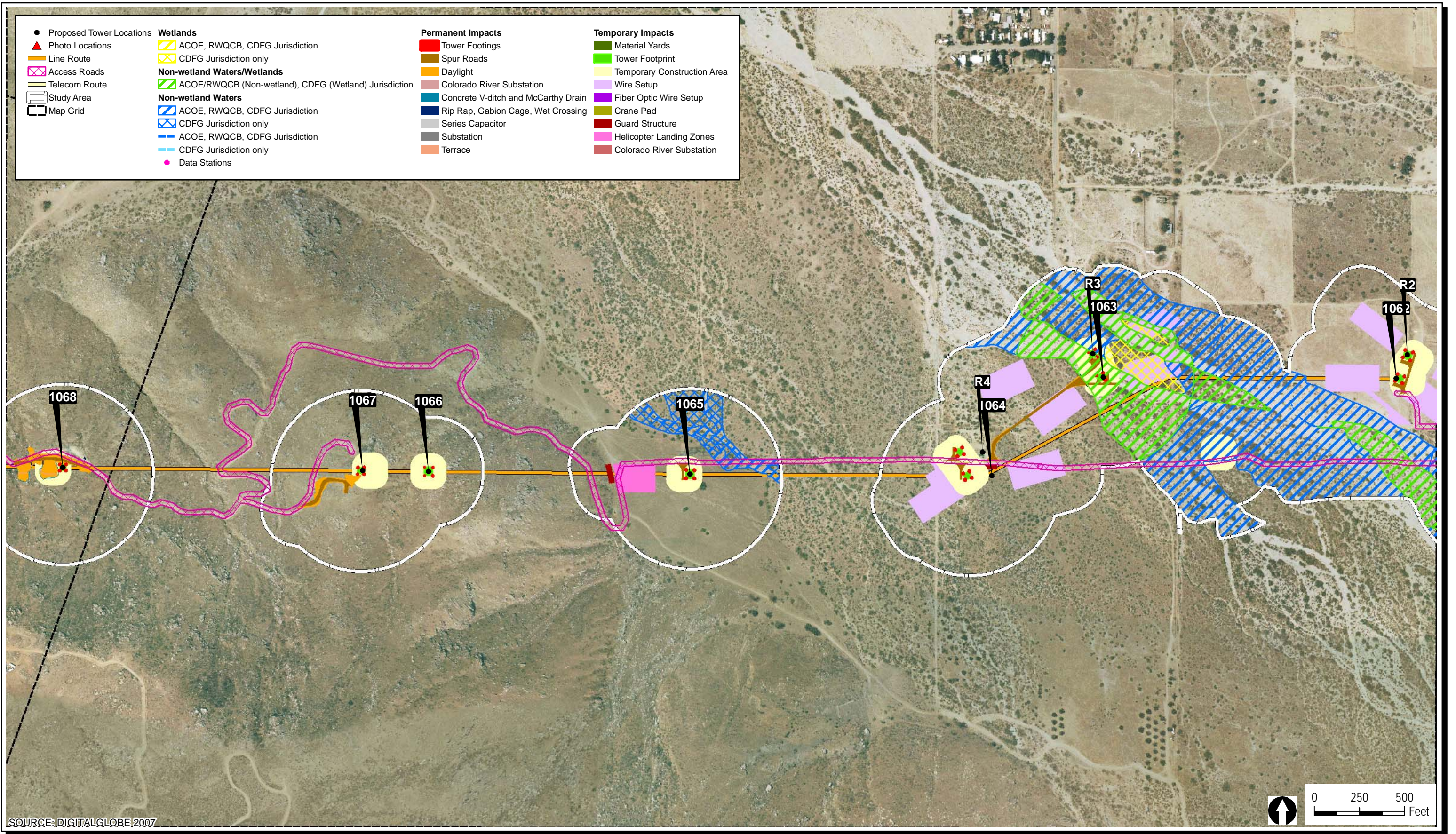
AGENCY DRAFT



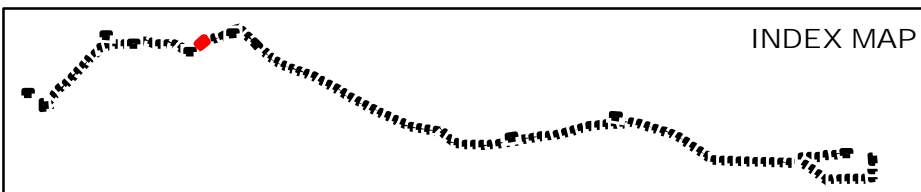
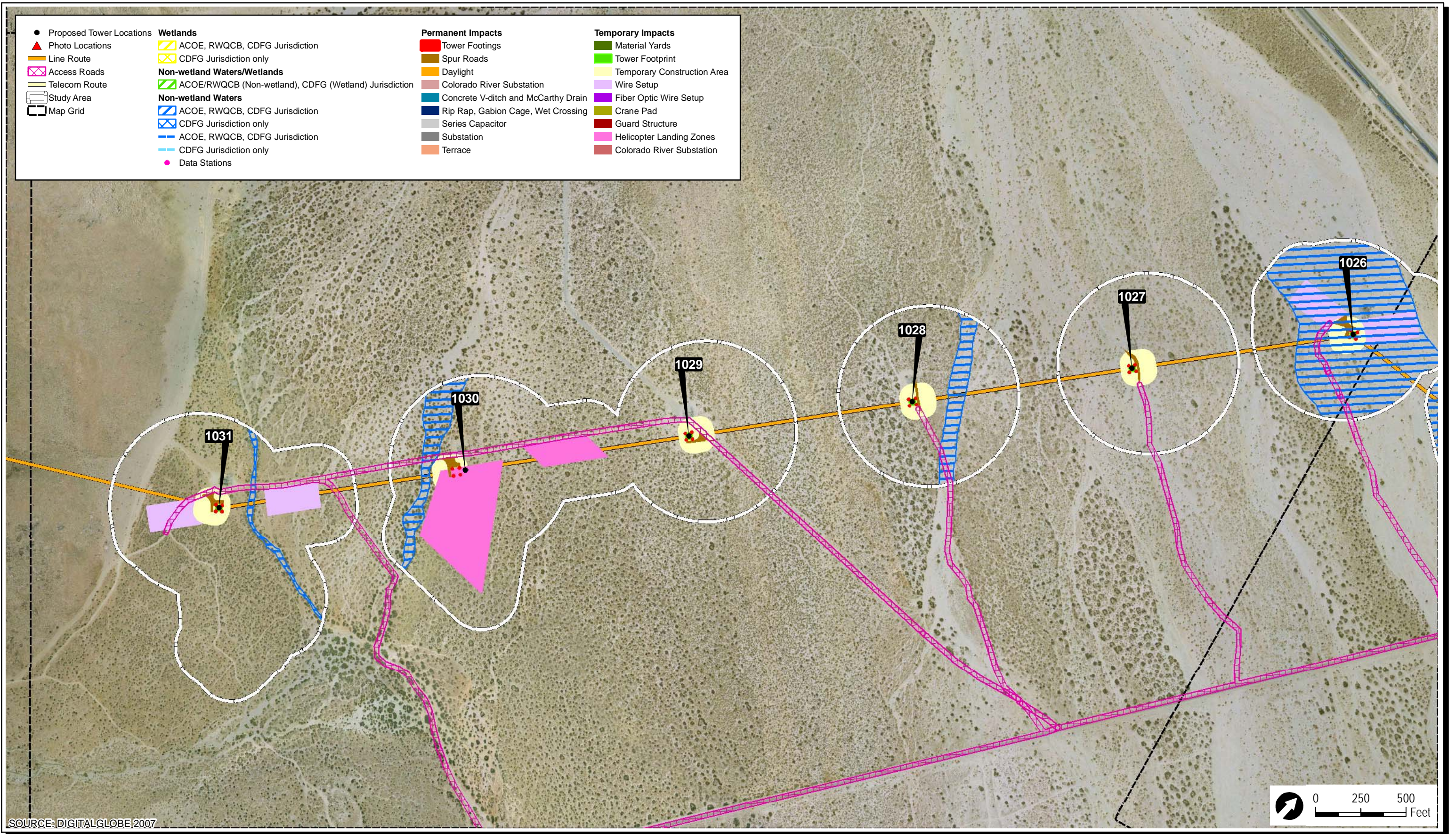
Devers to Palo Verde II Line
 Representative Map of Impacts to Waters under the Water Board, ACOE, and CDFG Jurisdictions
 Attachment D



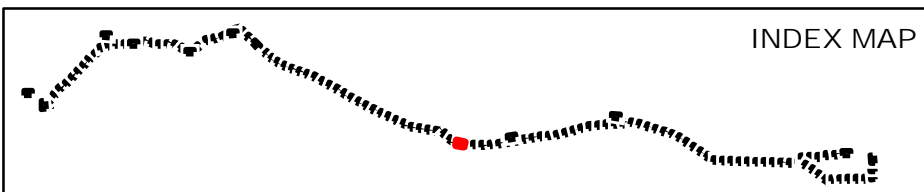
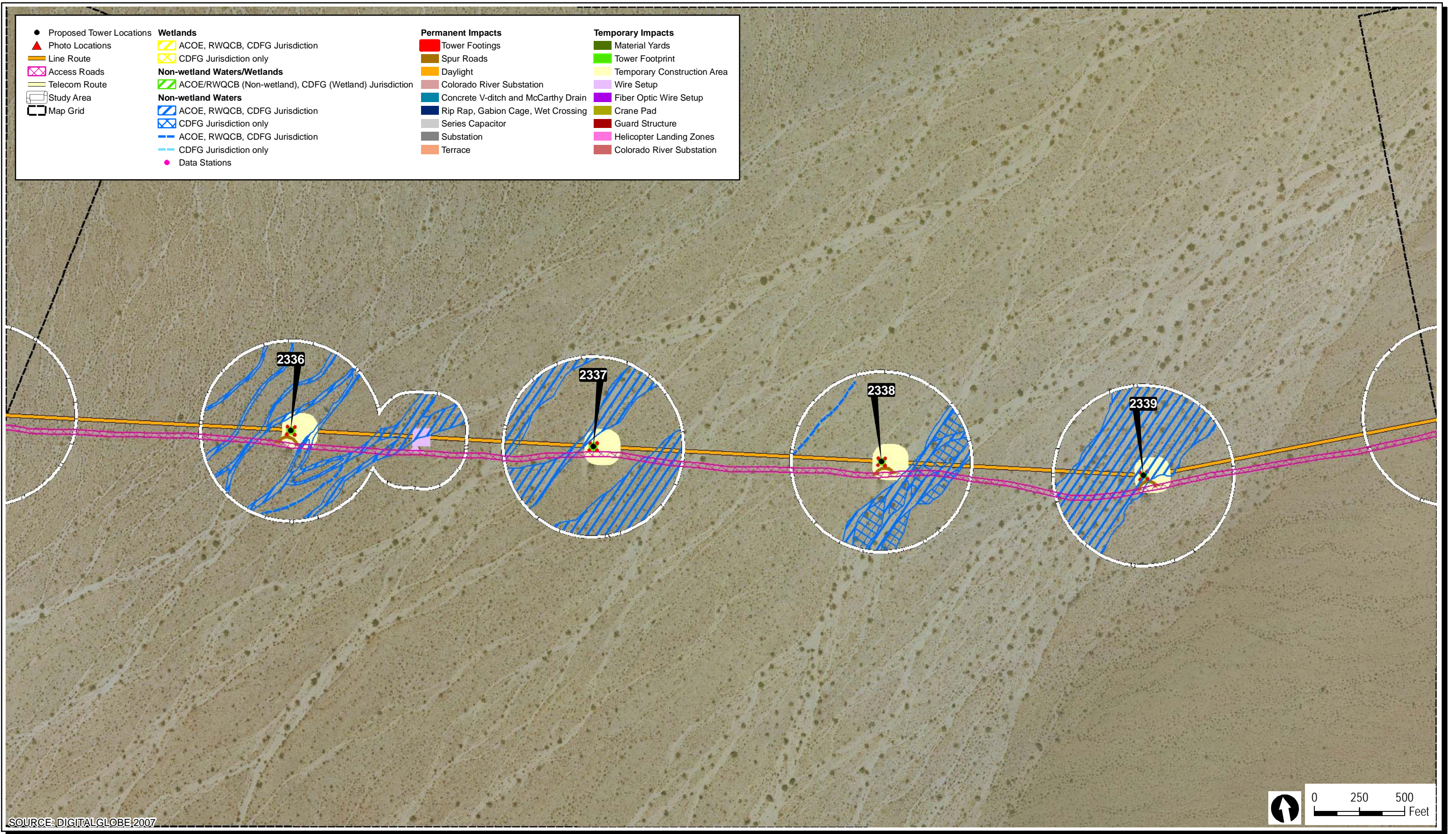
Devers to Palo Verde II Line
 Representative Map of Impacts to Waters under the Water Board, ACOE, and CDFG Jurisdictions
 Attachment D



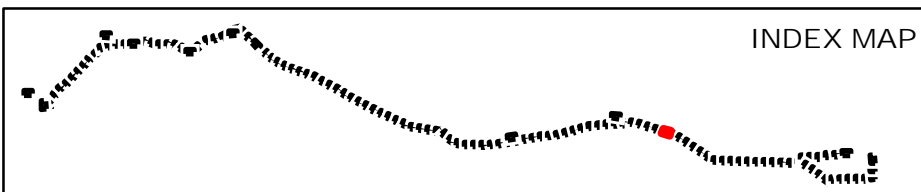
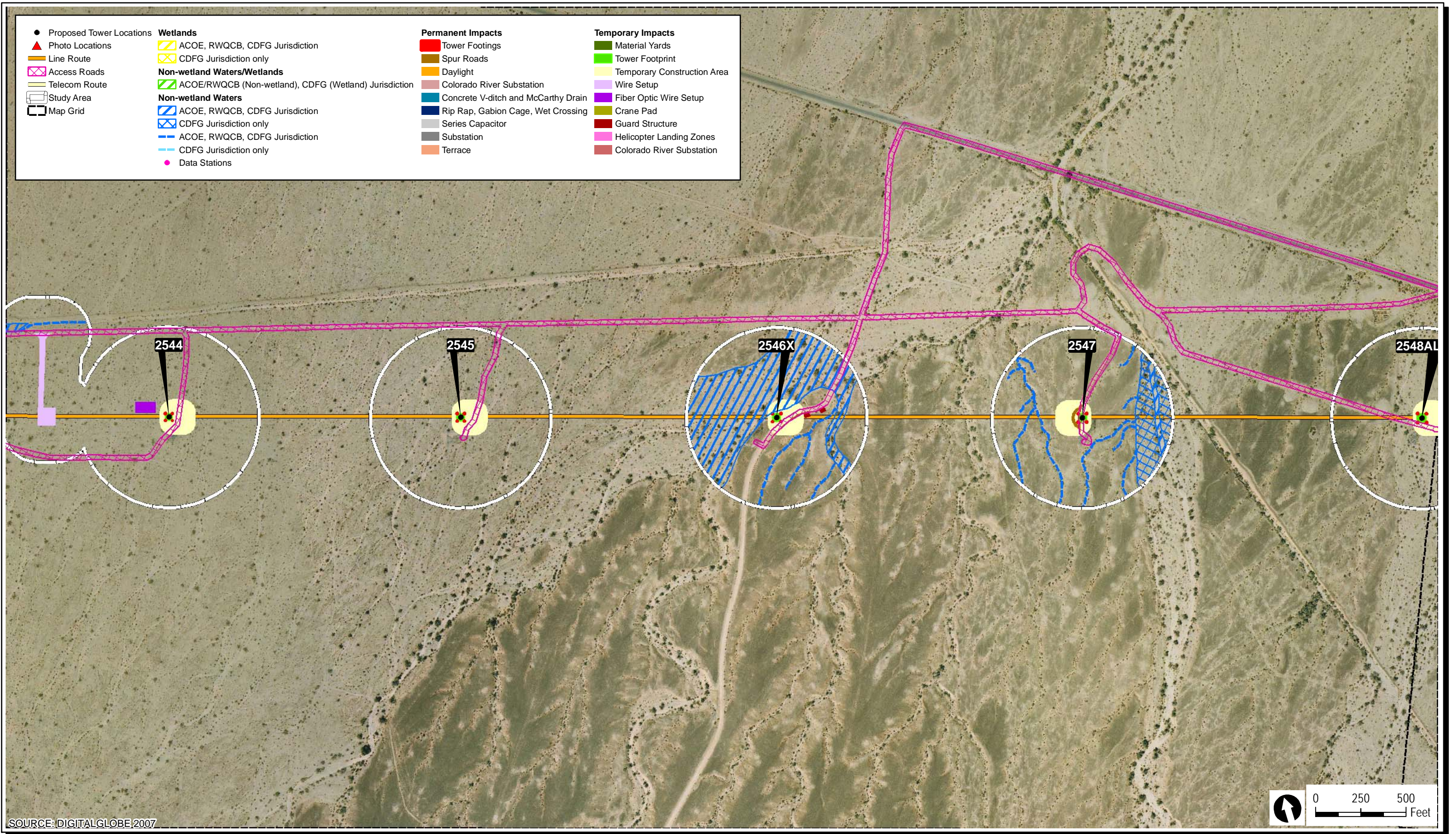
Devers to Palo Verde II Line
Representative Map of Impacts to Waters under the Water Board, ACOE, and CDFG Jurisdictions
Attachment D



Devers to Palo Verde II Line
Representative Map of Impacts to Waters under the Water Board, ACOE, and CDFG Jurisdictions
 Attachment D



Devers to Palo Verde II Line
Representative Map of Impacts to Waters under the Water Board, ACOE, and CDFG Jurisdictions
Attachment D



Devers to Palo Verde II Line
Representative Map of Impacts to Waters under the Water Board, ACOE, and CDFG Jurisdictions
Attachment D