

(This page intentionally left blank)

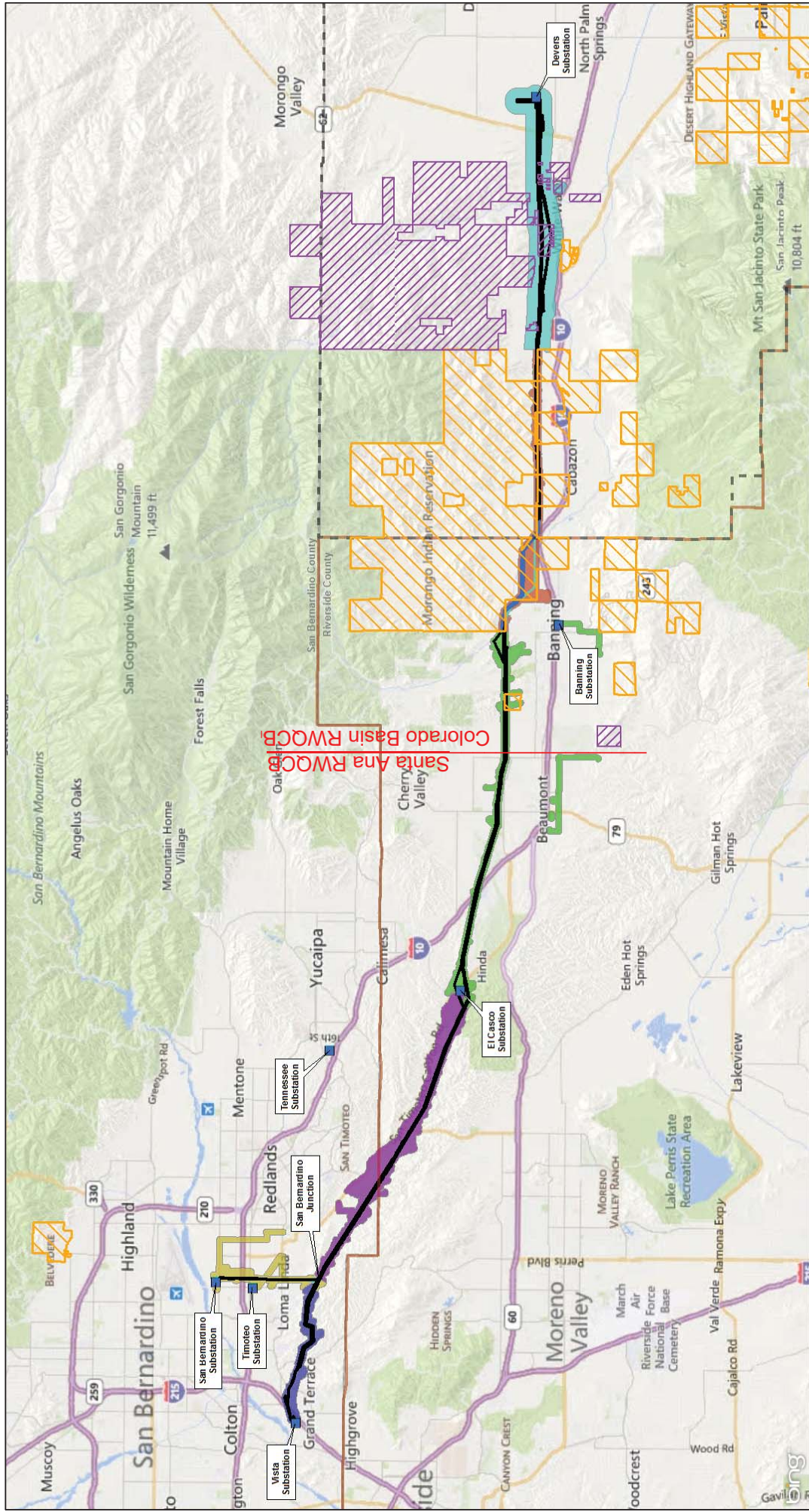
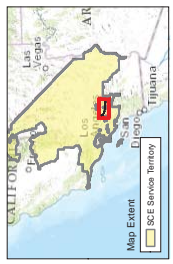


FIGURE 1
Page 2 of 4



Southern California Edison
West of Devers Upgrade Project
Project Overview and Study Area
CH2MHILL

- Segment 1
- Segment 2
- Segment 3
- Segment 4
- Segment 5
- Segment 6

- U.S. Bureau of Land Management
- Morongo Reservation
- Western Riverside County MSHCP
- Coachella Valley MSHCP

- Existing Transmission Line Right of Way
- Existing Transmission Line Right of Way to be Removed
- Substation

LEGEND

Source: SCE, ESRI, Bing Maps
C:\Users\GANDA\2014\Documents\ArcGIS\ISIPackages\WOD_Template_OVERVIEW_Sub_2015-01-15_86BB80CC-1FB4-46A8-8268-3A7F461CD250\101WOD_Template_Overview_2015-01-15.mxd (1/14/2015)

RWQCB boundary shown is approximate.



Figure 3

LEGEND

- Study Area
- Artificial Path
- Canal/Ditch
- Stream/River
- Major Water Body
- RWQCB Boundary
- USGS Hydrologic Unit (HUC 8) - USGS Hydrologic Unit (HUC 10)**
 - San Jacinto - Middle San Jacinto River
 - Santa Ana - San Timoteo Wash
 - Whitewater River - Headwaters Whitewater River
 - Whitewater River - San Gorgonio River

Source: SCE, Bing Maps



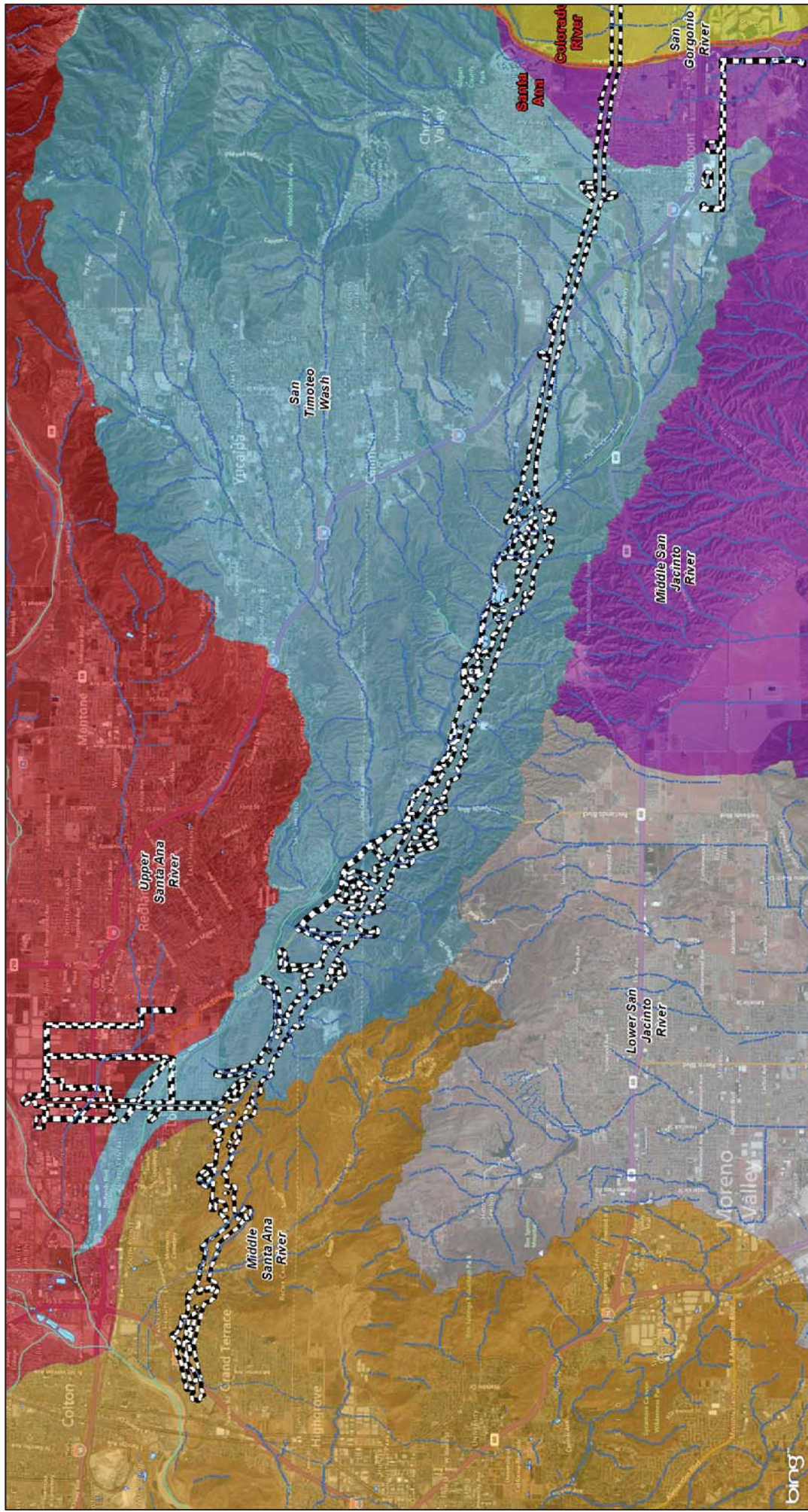


Figure 4



USGS Hydrologic Unit (HUC 8) - USGS Hydrologic Unit (HUC 10)

- San Jacinto - Lower San Jacinto River
- San Jacinto - Middle San Jacinto River
- Santa Ana - Middle Santa Ana River
- Santa Ana - San Timoteo Wash
- Santa Ana - Upper Santa Ana River
- Whitewater River - San Gorgonio River

LEGEND

- Study Area
- Artificial Path
- Canal/Ditch
- Stream River
- Major Water Body
- RWQCB Boundary

Source: SCE, Bing Maps