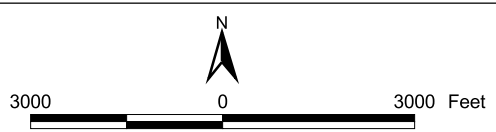
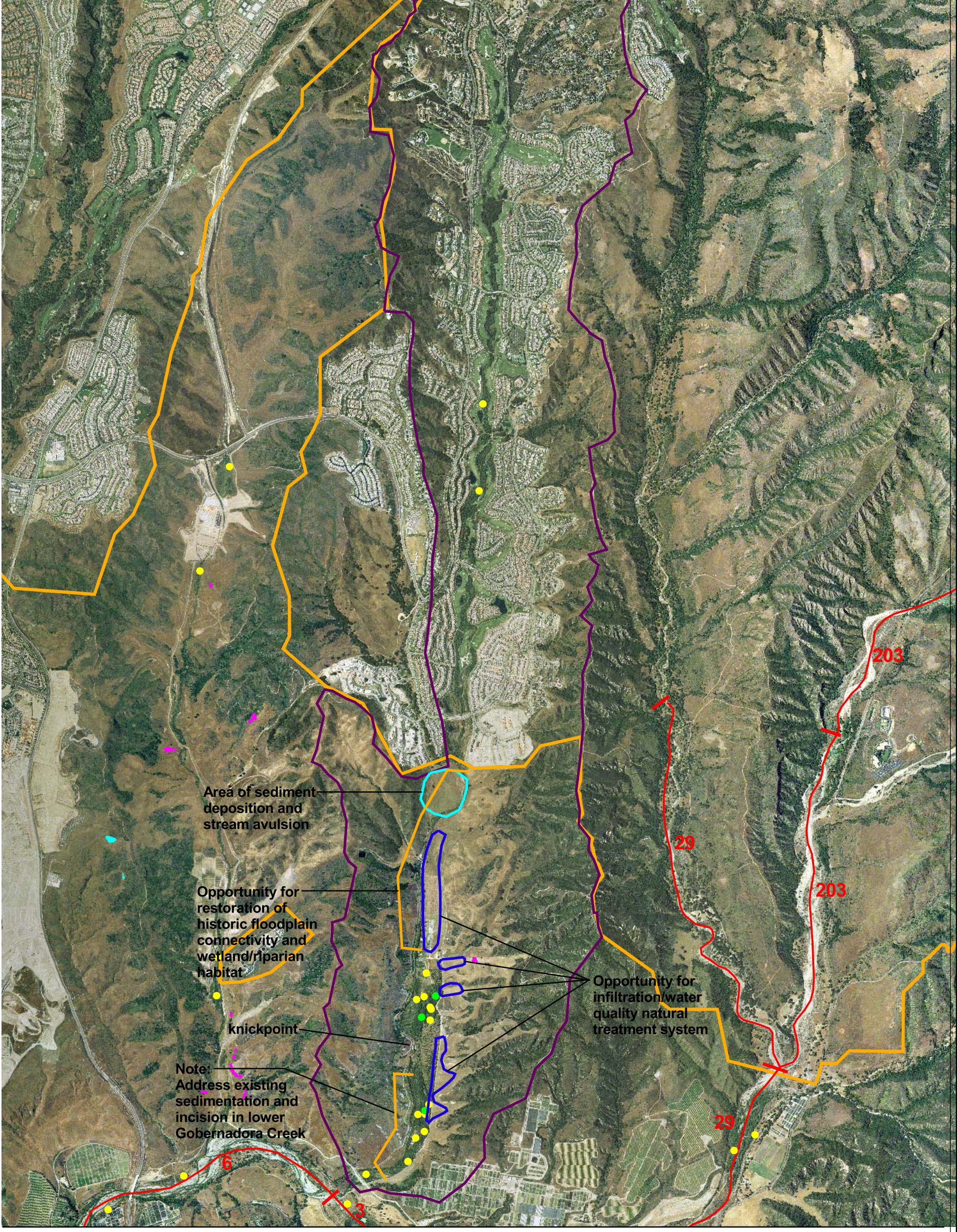


- + Arroyo Toad
(# = approx # of observations in 1998 & 2001)
 - Least Bell's Vireo
 - Southwestern Willow Flycatcher
 - Vernal Pool
 - Slope Wetlands
 - Sub-basin Boundary
 - Rancho Mission Viejo Boundary
- Avulsion= Changes in channel direction and form associated with the sudden movement of soil/sediment as a result of a flood.



Source: Eagle Aerial Imaging 2001 and PCR 2002.

Figure 25
 Sub-basin Geomorphic/Hydrologic Features Canada Gobernadora
 Opportunities for Restoration/Stabilization and
 Water Quality Natural Treatment Systems