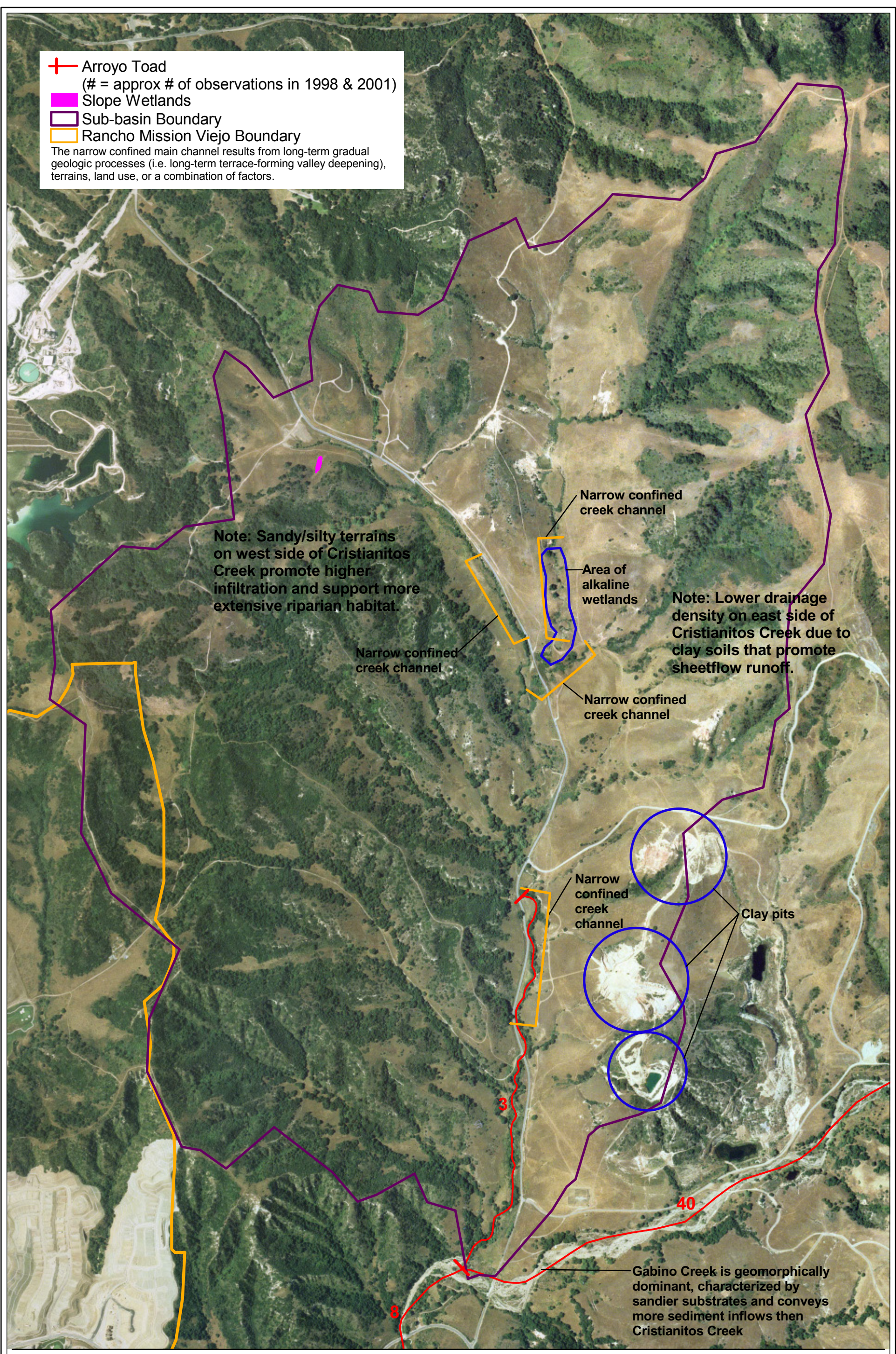


+ Arroyo Toad  
 (# = approx # of observations in 1998 & 2001)  
 Slope Wetlands  
 Sub-basin Boundary  
 Rancho Mission Viejo Boundary  
 The narrow confined main channel results from long-term gradual geologic processes (i.e. long-term terrace-forming valley deepening), terrains, land use, or a combination of factors.



Note: Sandy/silty terrains on west side of Cristianitos Creek promote higher infiltration and support more extensive riparian habitat.

Note: Lower drainage density on east side of Cristianitos Creek due to clay soils that promote sheetflow runoff.

Gabino Creek is geomorphically dominant, characterized by sandier substrates and conveys more sediment inflows than Cristianitos Creek



Figure 55  
**Sub-basin Geomorphic/Hydrologic Features  
 Cristianitos Canyon  
 Opportunities for Restoration/Stabilization**