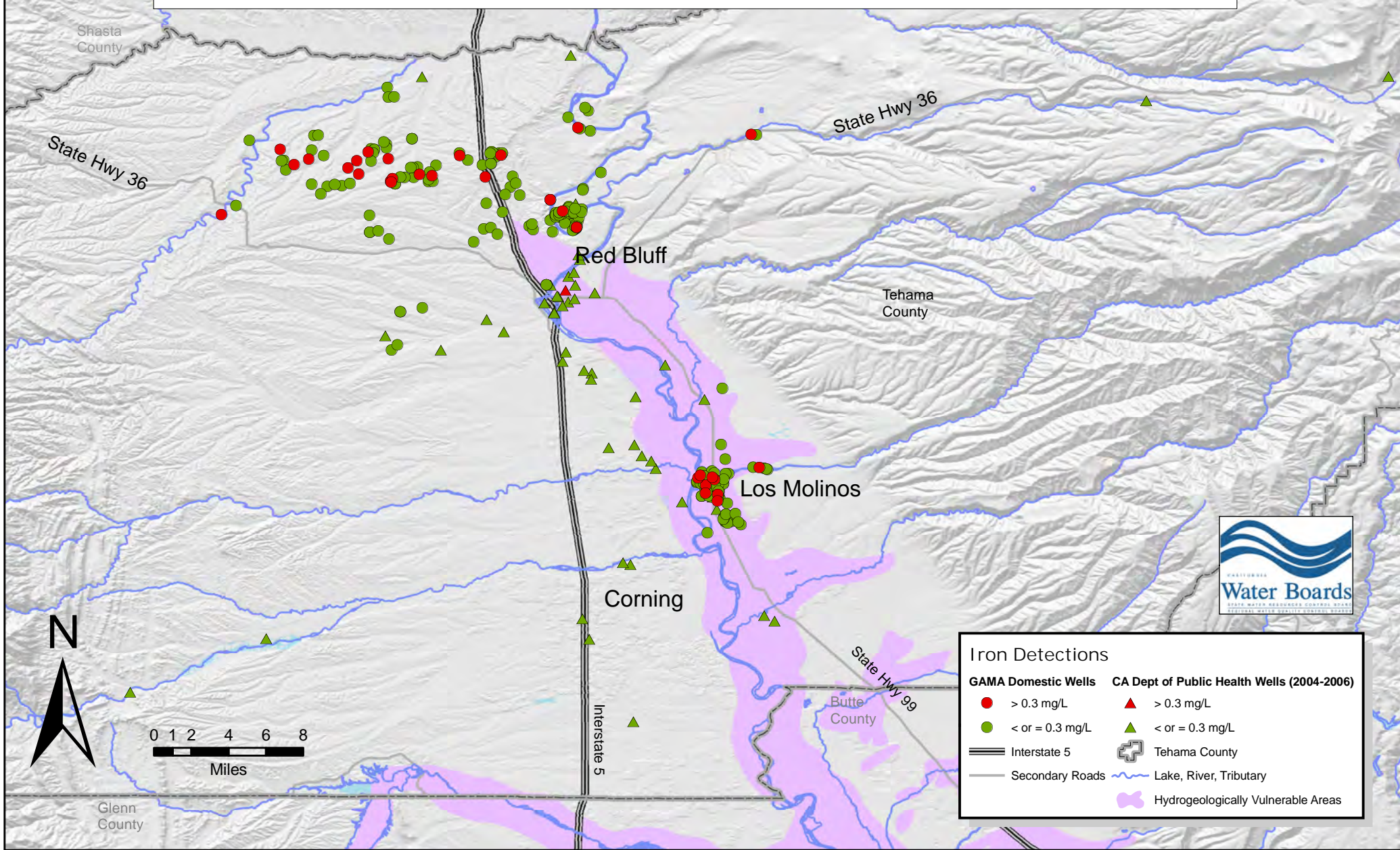


Groundwater Ambient Monitoring and Assessment (GAMA) Domestic Well Project Tehama County Focus Area, 2005 Iron in Domestic and Public Wells



Iron Detections

GAMA Domestic Wells	CA Dept of Public Health Wells (2004-2006)
● > 0.3 mg/L	▲ > 0.3 mg/L
● ≤ 0.3 mg/L	▲ ≤ 0.3 mg/L
≡ Interstate 5	⊕ Tehama County
— Secondary Roads	~ Lake, River, Tributary
	⊕ Hydrogeologically Vulnerable Areas