

1. **Annual Report**

a. Executive Summary

The Burney Basin Mosquito Abatement District (District) complied with the applicable components of the General NPDES Permit for Biological and Residual Pesticide Discharges from Vector Control Applications (General Permit). The District is a member of the MVCAC NPDES Permit Coalition and the Coalition conducted all required chemical and physical monitoring. The results of the Coalition's monitoring will be included in the Coalition Annual Report that will be sent separately to the SWRCB and Regional Boards.

The District made 37 applications to waters of the U.S. during the 2012 calendar year. The log of these applications can be found in Attachment B. The District performed Visual Monitoring of >10% of individual application sites identified as "Waters of the US" until July 2012. The visual monitoring completed by the District in the first half of the year found that there is no observable change in water quality between the background, event, and post event time periods-see monitoring log sheets. The SWRCB notified the permit holders in a letter to MVCAC dated July 13, 2012 that because the visual monitoring requirements were "interfering with the need for maximal efficient application to adequately protect human health from vector-borne diseases like West Nile Virus," that the visual monitoring was no longer required by individual Districts. The District continued to follow the guidelines of its Pesticide Application Plan (PAP).

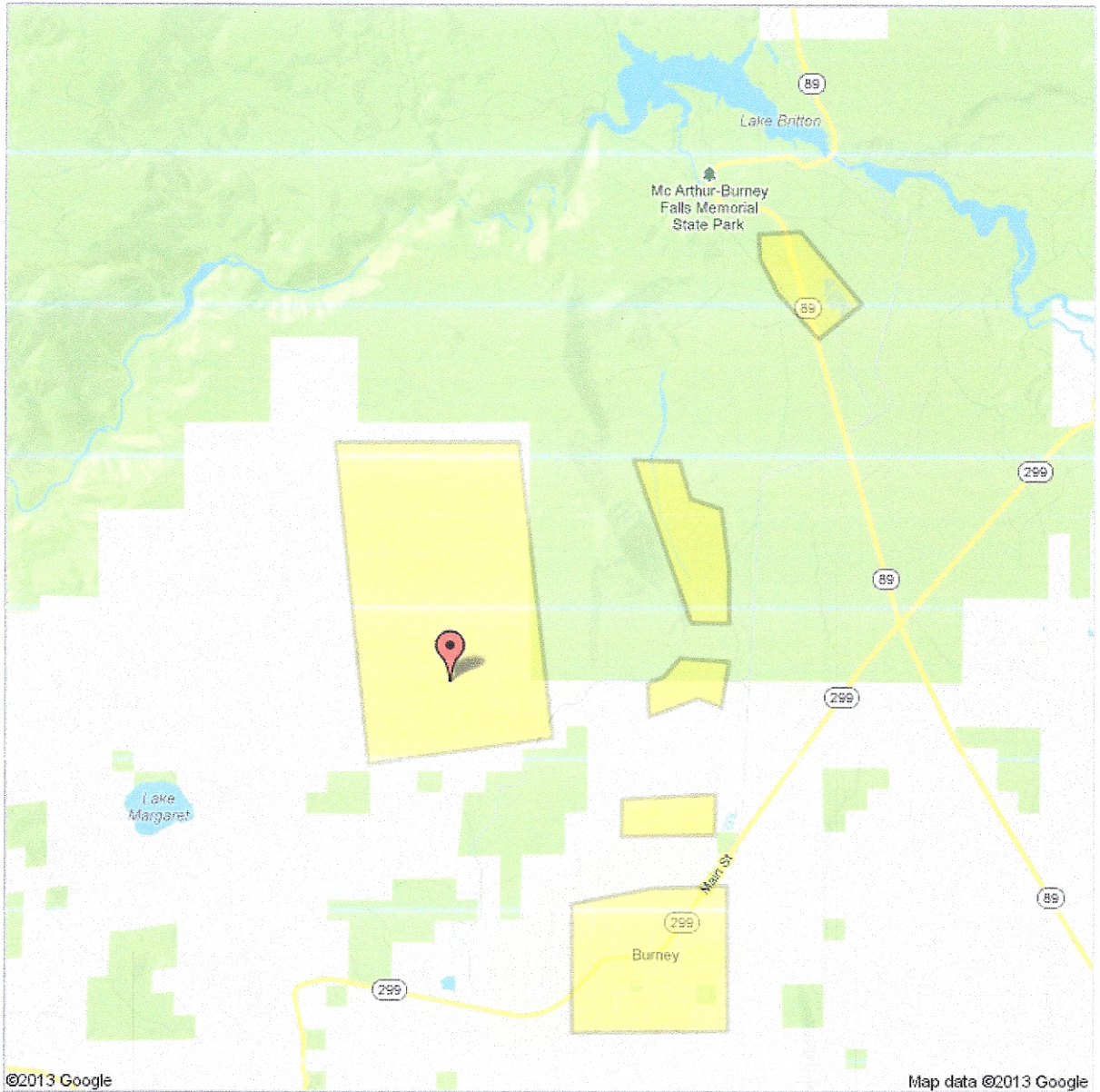
b. Summary of Monitoring Data

The District began the year by complying with the visual monitoring requirements of the permit. See Footnote 1 of Tables C-1 and C-2 in Amended Water Quality Control Order No. 2011-0002-DWQ, General Permit No. CAG990004. These requirements required a tremendous amount of time to monitor including a number of revisits to specific sites to gather the necessary information. Most critically, time spent revisiting old sites caused delay in getting to new sites. Given the short lifecycle of the mosquito, this greatly exacerbated the task of looking for and treating mosquito breeding sites early in their lifecycle when treatment is more concentrated and effective. Recognizing the need of mosquito control districts to quickly find and treat mosquito breeding sites to prevent the spread of disease, such as West Nile virus, the SWRCB issued a letter to MVCAC dated July 13, 2012 that indicated the visual monitoring requirement would no longer be required of individual Districts.

Per the instructions in the letter, the Coalition will provide information on the incidence of West Nile Virus and other similar public health threats in the Coalition's annual report.






For the reasons stated above, the District will no longer be collecting visual monitoring data.

- c. BMP Identification  
BMP's utilized by the District are outlined in the District's PAP. These include; emphasis on reducing mosquito breeding habitat through non-chemical means, training employees to prevent spills and applying appropriate amount of chemical in each treatment area, calibrate application equipment and use a biology based assessment for determining treatment thresholds.
  - d. Violation Discussion  
No violations of the General Permit by the District were observed.
  - e. Map of Applications  
See Attachment A
  - f. Log of Applications made to Waters of the U.S.  
Attachment B includes monthly reports of all application data on the covered application areas.
  - g. General Information on Applications  
Attachment B includes information on dosage, concentration and quantity of each pesticide used which are derived from the individual pesticide labels.
  - h. Visual Monitoring Data  
Visual Monitoring Data has been submitted to the State Water Board in the provided Monitoring Database Form -Attachment C.
  - i. BMP, PAP, Monitoring Program Recommendations  
No recommendations are being proposed to improve the current BMP's, PAP, or monitoring plan. Any changes to the Coalition Monitoring Plan will be highlighted in the Coalition Monitoring Annual Report.
  - j. Pesticide Application Log made to Waters of the U.S.  
A representation of the pesticide application log is contained in Attachment B
2. **Updated PAP Components**  
N/A
  3. **Self Monitoring Reports**  
N/A
  4. **Monitoring Reports**  
The Coalition Monitoring Annual Report will summarize all physical measurements and chemical monitoring done for 2011 and 2012.

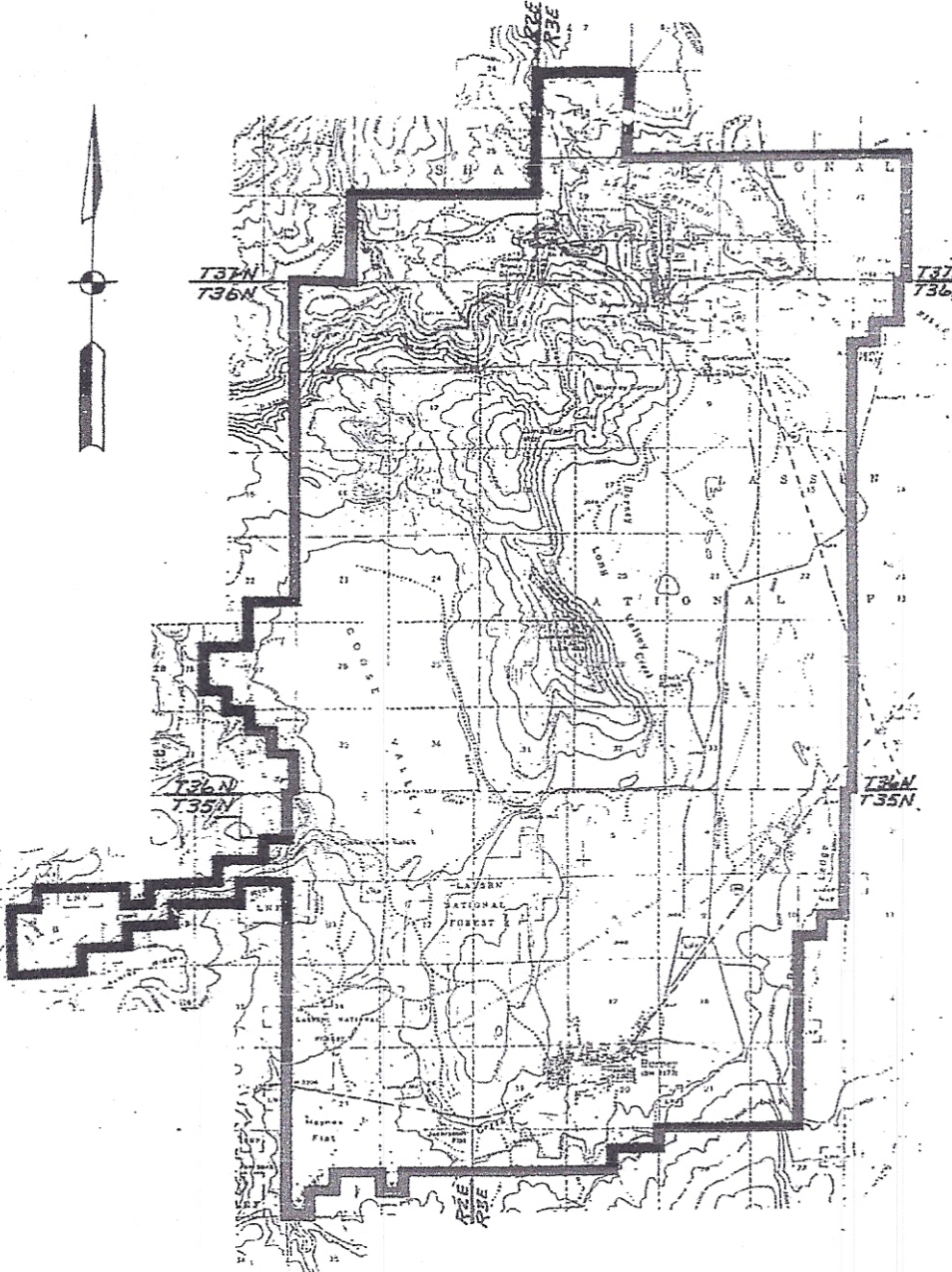


**BBMAD**

Unlisted · 0 views  
Created on Feb 20 · By · Updated < 1 minute ago

-  Larviciding
-  Adulticiding
-  Adulticiding
-  Adulticiding
-  Adulticiding
-  Adulticiding
-  Adulticiding





<b>Emp</b>	<b>Date</b>	<b>TimeStart</b>	<b>TimeEnd</b>	<b>Location</b>	<b>Area in Acres</b>	<b>Material in Gal or LBS</b>	<b>Material</b>	<b>latitude ; longitude</b>	<b>Adjacent Water Bodies</b>
Churney	6/13/2012	21:02	21:18	Hathaway	192	0.5400	Pyrocide 7396	N40.9067 ; W121.6532	Burney Creek
Churney	6/21/2012	21:29	21:49	Clark Creek	376	0.2350	Permanone 31-66	N41.043288, W121.673477	Clark Creek
Churney	6/28/2012	20:42	20:52	Hathaway	122	0.3200	Pyrocide 7396	N40.9067 ; W121.6532	Burney Creek
Churney	7/3/2012	21:32	21:48	Old 4 Corners	326	0.1300	Permanone 31-66	N41.0066 ; W121.6371	Burney Creek
Churney	7/5/2012	21:30	22:01	Estes Sub	258	0.1025	Permanone 31-66	N40.9273 ; W121.6503	Burney Creek
Churney	7/5/2012	22:07	23:08	Burney	1,174	0.4675	Permanone 31-66	N40.8761 ; W121.6711	Burney Creek
Churney	7/16/2012	20:45	20:53	Hathaway	118	0.2800	Pyrocide 7396	N40.9067 ; W121.6532	Burney Creek
Churney	7/17/2012	20:43	20:52	Hathaway	140	0.3400	Pyrocide 7396	N40.9067 ; W121.6532	Burney Creek
Churney	7/17/2012	21:03	21:30	Black Ranch	616	1.4800	Pyrocide 7396	N40.9407 ; W121.6513	Burney Creek
Churney	7/23/2012	19:59	21:26	GVR	2,358	5.5900	Pyrocide 7396	N40.9223 ; W121.7228	Goose Creek
Churney	7/25/2012	20:27	20:59	Black Ranch	616	1.4200	Pyrocide 7396	N40.9407 ; W121.6513	Burney Creek
Churney	7/26/2012	21:13	21:30	Old 4 Corners	332	0.1325	Permanone 31-66	N41.0066 ; W121.6371	Burney Creek
Churney	7/26/2012	21:46	21:55	Estes Sub	196	0.0675	Permanone 31-66	N40.9273 ; W121.6503	Burney Creek
Churney	7/31/2012	20:02	21:18	GVR	2,096	5.0300	Pyrocide 7396	N40.9223 ; W121.7228	Goose Creek
Churney	8/1/2012	20:23	20:52	Black Ranch	572	1.3700	Pyrocide 7396	N40.9407 ; W121.6513	Burney Creek
Churney	8/1/2012	21:17	21:35	Clark Creek	340	0.1400	Permanone 31-66	N41.043288, W121.673477	Clark Creek
Churney	8/2/2012	21:03	21:19	Estes Sub	270	0.1100	Permanone 31-66	N40.9273 ; W121.6503	Burney Creek
Churney	8/8/2012	19:50	21:07	GVR	2,270	5.4300	Pyrocide 7396	N40.9223 ; W121.7228	Goose Creek
Churney	8/9/2012	20:06	20:43	Black Ranch	716	1.7200	Pyrocide 7396	N40.9407 ; W121.6513	Burney Creek
Churney	8/15/2012	19:59	21:13	GVR	2,100	5.0300	Pyrocide 7396	N40.9223 ; W121.7228	Goose Creek
Churney	8/16/2012	20:05	20:31	Black Ranch	596	1.4300	Pyrocide 7396	N40.9407 ; W121.6513	Burney Creek
Churney	8/16/2012	20:47	21:03	Old 4 Corners	346	0.1400	Permanone 31-66	N41.0066 ; W121.6371	Burney Creek
Churney	8/16/2012	21:20	21:41	Estes Sub	286	0.1150	Permanone 31-66	N40.9273 ; W121.6503	Burney Creek
Churney	8/22/2012	19:38	20:49	GVR	2,096	5.0100	Pyrocide 7396	N40.9223 ; W121.7228	Goose Creek
Churney	8/23/2012	20:40	21:02	Estes Sub	288	0.1175	Permanone 31-66	N40.9273 ; W121.6503	Burney Creek
Churney	8/23/2012	20:00	20:29	Black Ranch	602	1.4500	Pyrocide 7396	N40.9407 ; W121.6513	Burney Creek
Churney	8/29/2012	19:16	20:26	GVR	1,980	4.7400	Pyrocide 7067	N40.9223 ; W121.7228	Goose Creek
Churney	8/30/2012	20:24	20:37	Old 4 Corners	294	0.1175	Permanone 31-66	N41.0066 ; W121.6371	Burney Creek
Churney	8/30/2012	19:38	20:07	Black Ranch	662	1.5900	Pyrocide 7396	N40.9407 ; W121.6513	Burney Creek
Churney	8/30/2012	20:53	21:19	Estes Sub	130	0.1050	Permanone 31-66	N40.9273 ; W121.6503	Burney Creek
Churney	9/20/2012	19:50	20:03	Estes Sub	151	0.1225	Permanone 31-66	N40.9273 ; W121.6503	Burney Creek

Date of Application	Applicator	Location	Name of Water Body	Type of Water Body	Description	Type of pesticide	Product Name	Time of monitoring
06/13/2012	Churney	N40.9067 ; W121.6532	Greer Ditch	Channel		Adulticide	PYROCIDE 7396	Background
06/13/2012	Churney	N40.9067 ; W121.6532	Greer Ditch	Channel		Adulticide	PYROCIDE 7396	Event
06/13/2012	Churney	N40.9067 ; W121.6532	Greer Ditch	Channel		Adulticide	PYROCIDE 7396	Post-Event
06/20/2012	Metcalf	N40.9285 ; W121.7081	Goose Creek	Channel		Larvicide	Vectobac 12AS	Background
06/20/2012	Metcalf	N40.9285 ; W121.7081	Goose Creek	Channel		Larvicide	Vectobac 12AS	Event
06/20/2012	Metcalf	N40.9285 ; W121.7081	Goose Creek	Channel		Larvicide	Vectobac 12AS	Post-Event
06/21/2012	Churney	N41.043288, W121.673477	Clark Creek	Channel		Adulticide	PERMANONE 31-66	Background
06/21/2012	Churney	N41.043288, W121.673477	Clark Creek	Channel		Adulticide	PERMANONE 31-66	Event
06/21/2012	Churney	N41.043288, W121.673477	Clark Creek	Channel		Adulticide	PERMANONE 31-66	Post-Event
06/22/2012	Churney	N40.9067 ; W121.6532	Greer Ditch	Channel		Adulticide	PYROCIDE 7396	Background
06/22/2012	Churney	N40.9067 ; W121.6532	Greer Ditch	Channel		Adulticide	PYROCIDE 7396	Event
06/22/2012	Churney	N40.9067 ; W121.6532	Greer Ditch	Channel		Adulticide	PYROCIDE 7396	Post-Event
06/28/2012	Churney	N40.9067 ; W121.6532	Greer Ditch	Channel		Adulticide	Pyrocide 7396	Background
06/28/2012	Churney	N40.9067 ; W121.6532	Greer Ditch	Channel		Adulticide	Pyrocide 7396	Event
06/28/2012	Churney	N40.9067 ; W121.6532	Greer Ditch	Channel		Adulticide	Pyrocide 7396	Post-Event
06/29/2012	Metcalf	N40.9285 ; W121.7081	Goose Creek	Channel		Larvicide	Vectobac 12AS	Background
06/29/2012	Metcalf	N40.9285 ; W121.7081	Goose Creek	Channel		Larvicide	Vectobac 12AS	Event
06/29/2012	Metcalf	N40.9285 ; W121.7081	Goose Creek	Channel		Larvicide	Vectobac 12AS	Post-Event
07/02/2012	Churney	N40.9222 ; W121.7227	Goose Creek	Channel		Adulticide	Pyrocide 7396	Background
07/02/2012	Churney	N40.9222 ; W121.7227	Goose Creek	Channel		Adulticide	Pyrocide 7396	Event
07/02/2012	Churney	N40.9222 ; W121.7227	Goose Creek	Channel		Adulticide	Pyrocide 7396	Post-Event
07/03/2012	Churney	N41.0066 ; W121.6371	Burney Creek	Channel		Adulticide	Permanone 31-66	Background
07/03/2012	Churney	N41.0066 ; W121.6371	Burney Creek	Channel		Adulticide	Permanone 31-66	Event
07/03/2012	Churney	N41.0066 ; W121.6371	Burney Creek	Channel		Adulticide	Permanone 31-66	Post-Event
07/05/2012	Churney	N40.9407 ; W121.6513	Burney Creek	Channel		Adulticide	Pyrocide 7396	Background
07/05/2012	Churney	N40.9407 ; W121.6513	Burney Creek	Channel		Adulticide	Pyrocide 7396	Event
07/05/2012	Churney	N40.9407 ; W121.6513	Burney Creek	Channel		Adulticide	Pyrocide 7396	Post-Event
07/05/2012	Churney	N40.9273 ; W121.6503	Burney Creek	Channel		Adulticide	Permanone 31-66	Background
07/05/2012	Churney	N40.9273 ; W121.6503	Burney Creek	Channel		Adulticide	Permanone 31-66	Event
07/05/2012	Churney	N40.9273 ; W121.6503	Burney Creek	Channel		Adulticide	Permanone 31-66	Post-Event
07/05/2012	Churney	N40.8761 ; W121.6711	Burney Creek	Channel		Adulticide	Permanone 31-66	Background
07/05/2012	Churney	N40.8761 ; W121.6711	Burney Creek	Channel		Adulticide	Permanone 31-66	Event
07/05/2012	Churney	N40.8761 ; W121.6711	Burney Creek	Channel		Adulticide	Permanone 31-66	Post-Event
07/09/2012	Churney	N40.9223 ; W121.7228	Goose Creek	Channel		Adulticide	Pyrocide 7396	Background

07/09/2012	Churney	N40.9223 ; W121.7228	Goose Creek	Channel	Adulticide	Pyrocide 7396	Event
07/09/2012	Churney	N40.9223 ; W121.7228	Goose Creek	Channel	Adulticide	Pyrocide 7396	Post-Event

Monitoring Date	Time	Name(s) of personnel	Overhead Conditions	Precipitation	Wind	Air Temperature	Water Color	Water Clarity	Floating/Suspended Matter
06/13/2012	8:40 P.M.	M CHURNEY	Clear/sunny	None	Calm	Warm/mild	Colorless	Clear	Not Observed
06/14/2012	10:18 A.M.	M CHURNEY	Clear/sunny	None	Calm	Warm/mild	Colorless	Clear	Not Observed
06/20/2012	6:30 a.m.	Metcalf	Clear/sunny	None	Calm	Cool	Green	Cloudy	Not Observed
06/20/2012	12:30 p.m.	Metcalf	Clear/sunny	None	Light breeze	Cool	Green	Cloudy	Not Observed
06/25/2012	7:00 a.m.	Metcalf	Clear/sunny	None	Calm	Cool	Green	Cloudy	Not Observed
6/21/2012	8:25 PM	CHURNEY	Overcast	None	Calm	Cool	Colorless	Clear	Not Observed
6/21/2012	9:15 AM	CHURNEY	Overcast	None	Light breeze	Cool	Colorless	Clear	Not Observed
6/22/2012	9:00 PM	CHURNEY	Overcast	None	Light breeze	Cool	Colorless	Clear	Not Observed
6/22/2012	10:00 AM	CHURNEY	Partly cloudy	None	Light breeze	Cool	Colorless	Clear	Not Observed
6/28/2012	8:25 p.m.	Churney	Clear/sunny	None	Calm	Warm/mild	Colorless	Clear	Not Observed
6/28/2012	8:55 p.m.	Churney	Clear/sunny	None	Calm	Cool	Colorless	Clear	Not Observed
06/29/2012	6:35 a.m.	Metcalf	Clear/sunny	None	Calm	Cool	Green	Cloudy	Not Observed
06/29/2012	1:00 p.m.	Metcalf	Clear/sunny	None	Light breeze	Cool	Green	Cloudy	Not Observed
07/02/2012	6:30 a.m.	Metcalf	Clear/sunny	None	Calm	Cool	Green	Cloudy	Not Observed
07/02/2012	7:45 p.m.	Churney	Clear/sunny	None	Calm	Warm/mild	Colorless	Clear	Not Observed
07/03/2012	10:00 a.m.	Churney	Clear/sunny	None	Calm	Warm/mild	Colorless	Clear	Not Observed
07/03/2012	3:30 p.m.	Churney	Clear/sunny	None	Light breeze	Hot	Dry	Clear	Not Observed
07/03/2012	10:00 p.m.	Churney	Clear/sunny	None	Calm	Warm/mild	Dry	Clear	Not Observed
07/05/2012	8:45 p.m.	Churney	Clear/sunny	None	Light breeze	Warm/mild	Green	Cloudy	Not Observed
07/06/2012	10:00 a.m.	Churney	Clear/sunny	None	Calm	Hot	Green	Cloudy	Not Observed
07/05/2012	8:35 p.m.	Churney	Clear/sunny	None	Light breeze	Warm/mild	Green	Cloudy	Not Observed
07/06/2012	9:45 a.m.	Churney	Clear/sunny	None	Calm	Hot	Green	Cloudy	Not Observed
07/05/2012	3:30 p.m.	Churney	Clear/sunny	None	Light breeze	Hot	Colorless	Clear	Not Observed
07/06/2012	10:30 a.m.	Churney	Clear/sunny	None	Calm	Hot	Colorless	Clear	Not Observed
07/09/2012	7:45 p.m.	Churney	Clear/sunny	None	Calm	Warm/mild	Colorless	Clear	Not Observed



07/10/2012	8:00 a.m.	Churney	Clear/sunny	None	Calm	Hot	Colorless	Clear	Not Observed	Not Observed
------------	-----------	---------	-------------	------	------	-----	-----------	-------	--------------	--------------



Not Observed Not Observed None  
Not Observed Not Observed None

Not Observed None  
Not Observed None